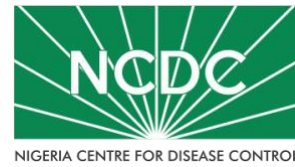


# COVID-19 SITUATION REPORT

## SITUATION REPORT 111

Thursday, 18th June 2020



NIGERIA CENTRE FOR DISEASE CONTROL

DATA AS REPORTED AND ACCURATE BY NCDC AS AT MIDNIGHT 18<sup>th</sup> JUNE 2020

### HIGHLIGHTS

- Seven hundred and forty-five (**745**) confirmed cases were reported in the last 24 hours from Twenty one (**21**) states – Lagos (280), Oyo (103), Ebonyi (72), FCT (60), Imo (46), Edo (34), Delta (33), Rivers (25), Kaduna (23), Ondo (16), Katsina (12), Kano (10), Bauchi (8), Borno (7), Kwara (5), Gombe (4), Enugu (2), Sokoto (2), Nasarawa (1), Osun (1) and Yobe (1).
- No new state recorded a confirmed COVID-19 case in the last 24 hours. The total number of states including FCT that have reported at least one confirmed case in Nigeria is still **36** (35 states + FCT).
- Three hundred and forty (**340**) cases were discharged in the last 24 hours in nineteen (**19**) states – Lagos (59), Ogun (41), Oyo (39), Bauchi (34), Akwa Ibom (23), Gombe (20), Anambra (19), Borno (17), Rivers (15), Sokoto (12), Ebonyi (11), FCT (11), Kano (10), Delta (9), Edo (6), Ekiti (6), Osun (4), Niger (2) and Kwara (2).
- Six (**6**) deaths were recorded in the last 24 hours in six (**6**) states – Gombe (1), Kwara (1), Lagos (1), Niger (1), Ogun (1) and Ondo (1).

### SITUATION UPDATES

Total (New in the last 24 hours)

SAMPLES TESTED

**108548 (2542)**

CONFIRMED CASES

**18480 (745)**

AFFECTED STATES INCLUDING FCT

**36 (0)**

DISCHARGED CASES

**6307 (340)**

CONFIRMED FATALITIES

**475 (6) – 2.6% CFR**

DEMOGRAPHICS

MALE – 12126 (**66%**)

FEMALE – 6354 (**34%**)

MOST AFFECTED AGE GROUP

31 - 40 (**24%**)

PERSONS OF INTEREST

**10377 (Total)**

**10164 (97.9% - Exceeded Follow Up)**

PROVENANCE

TRAVEL HISTORY – **401 (2%)**

CONTACTS – **3720 (20%)**

UNKNOWN EXPOSURE – **14359 (78%)**

GLOBAL UPDATES

TOTAL NUMBER OF CASES

**8,242,999 (445,535 deaths)**

COUNTRIES & TERRITORIES AFFECTED<sup>2</sup>

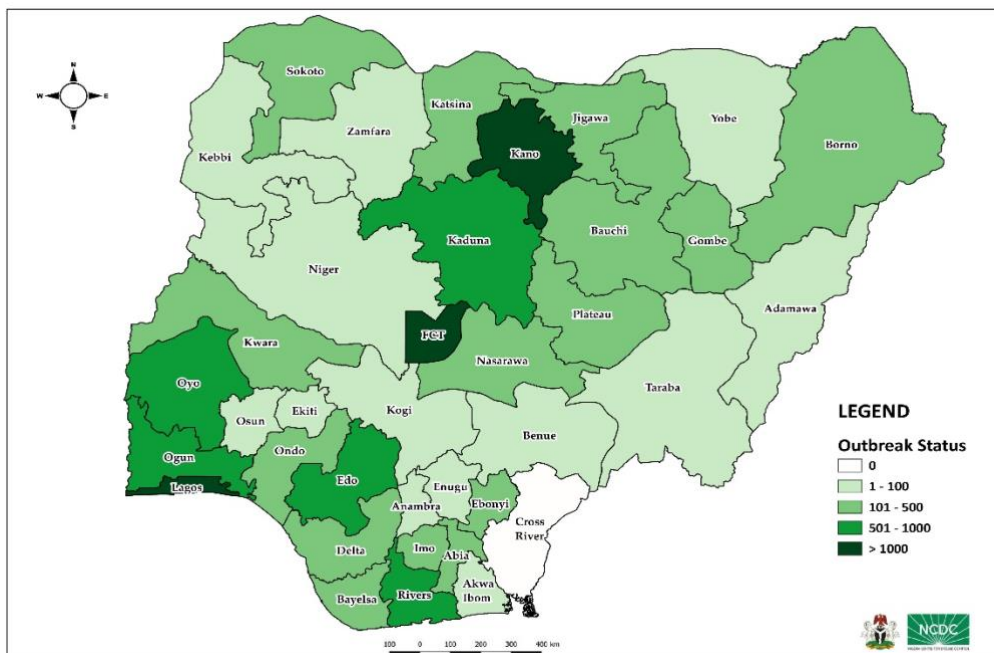
**213**

<sup>1</sup>Data linelist update from State

\*Excluding the 2 International Conveyances

### STATE OF THE NATION

Figure 1: Map of Nigeria showing 35 states and FCT affected by COVID-19



## GENERAL FACT SHEET – DATA AS AT 18<sup>TH</sup> JUNE 2020

Table 1: States with reported laboratory-confirmed COVID-19 cases, recoveries, deaths and days since last reported case

STATES	CONFIRMED CASES		DISCHARGED CASES		DEATHS		TOTAL ACTIVE CASES	DAYS SINCE LAST REPORTED CASE
	CUMULATIVE	NEW	CUMULATIVE	NEW	CUMULATIVE	NEW		
Lagos	7896	280	1382	59	108	1	6406	0
FCT	1451	60	402	11	28	0	1021	0
Kano	1170	10	706	10	50	0	414	0
Oyo	764	103	281	39	9	0	474	0
Edo	729	34	160	6	31	0	538	0
Rivers	721	25	288	15	26	0	407	0
Ogun	586	0	356	41	15	1	215	1
Kaduna	513	23	286	0	10	0	217	0
Borno	464	7	333	17	30	0	101	0
Gombe	447	4	191	20	13	1	243	0
Bauchi	438	8	322	34	11	0	105	0
Katsina	426	12	233	0	22	0	171	0
Delta	400	33	104	9	17	0	279	0
Jigawa	317	0	190	0	6	0	121	5
Ebonyi	234	72	137	11	0	0	97	0
Imo	205	46	21	0	3	0	181	0
Plateau	186	0	114	0	5	0	67	1
Nasarawa	178	1	74	0	6	0	98	0
Kwara	177	5	100	2	6	1	71	0
Abia	173	0	20	0	0	0	153	3
Sokoto	135	2	115	12	14	0	6	0
Bayelsa	111	0	28	0	3	0	80	1
Ondo	105	16	42	0	15	1	48	0
Enugu	95	2	28	0	5	0	62	0
Zamfara	76	0	71	0	5	0	0	31
Kebbi	67	0	34	0	6	0	27	1
Anambra	66	0	44	19	9	0	13	3
Niger	66	0	33	2	2	1	31	3
Yobe	56	1	45	0	8	0	3	0
Osun	51	1	45	4	4	0	2	0
Akwa Ibom	48	0	40	23	2	0	6	5
Adamawa	42	0	37	0	4	0	1	17
Benue	36	0	11	0	0	0	25	2
Ekiti	30	0	24	6	2	0	4	9
Taraba	18	0	10	0	0	0	8	29
Kogi	3	0	0	0	0	0	3	15
<b>TOTAL</b>	<b>18480</b>	<b>745</b>	<b>6307</b>	<b>340</b>	<b>475</b>	<b>6</b>	<b>11698</b>	

States including FCT are arranged in descending order by number of total confirmed cases

## SELECTED CHARTS

Figure 2: Daily Epidemic Curve of Confirmed Cases (WK9 – WK25)

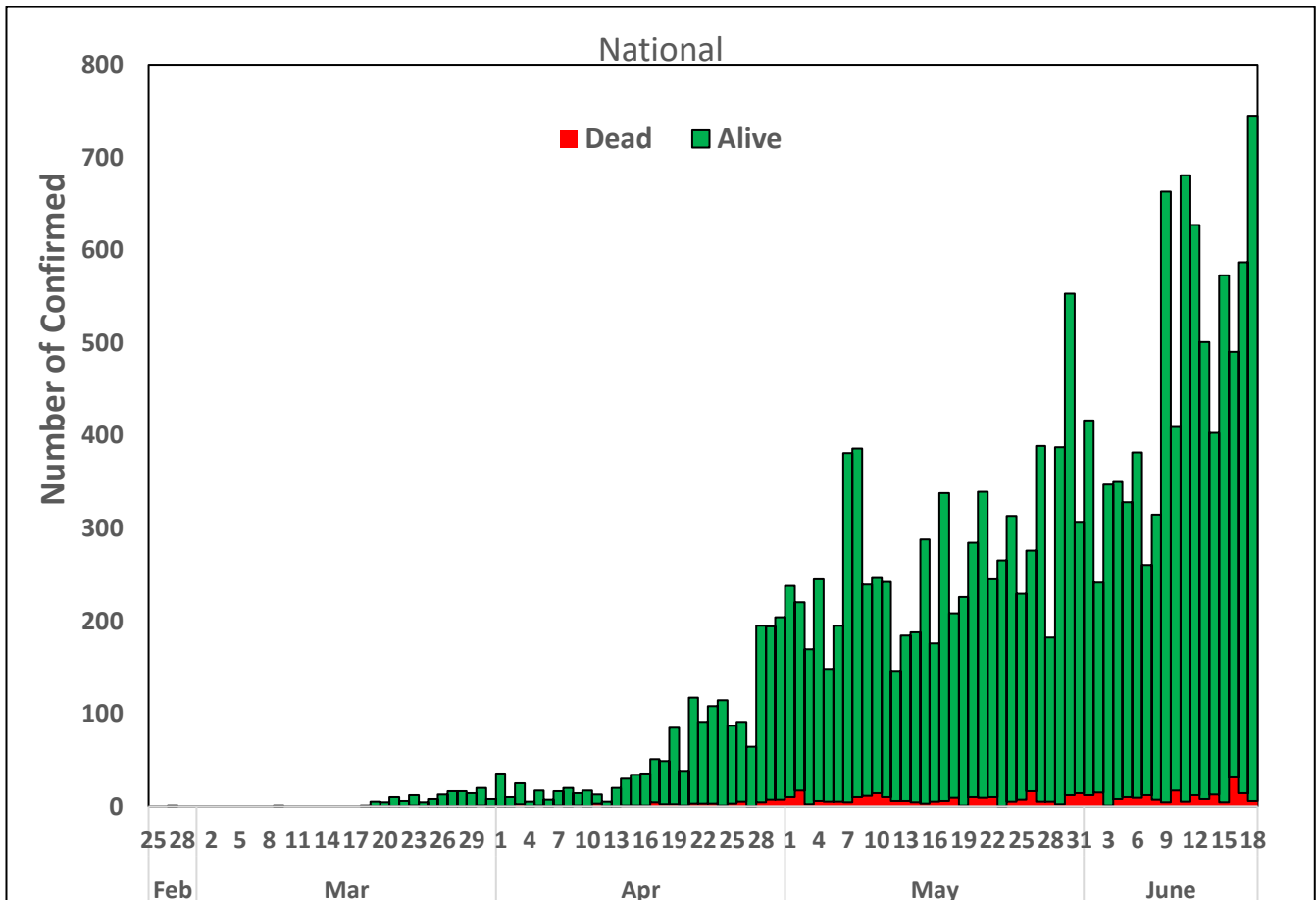
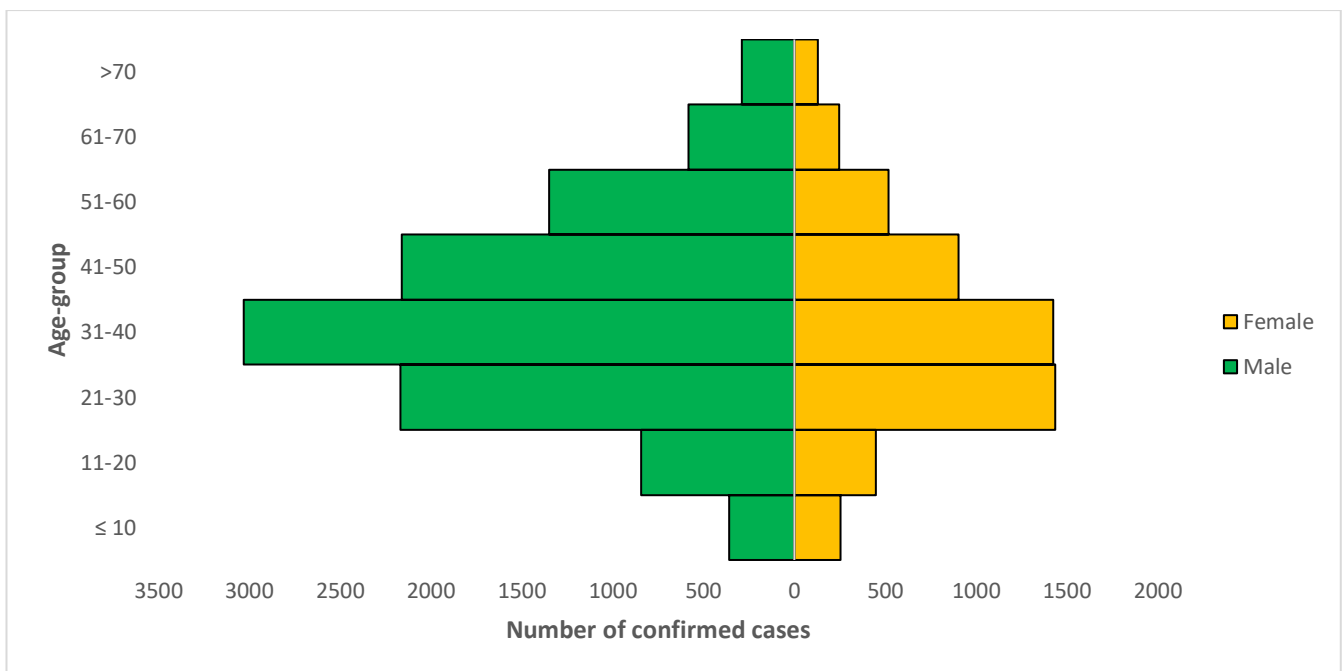


Figure 3: Age-Sex Distribution of Confirmed Cases (WK9 – WK25)



## PREPAREDNESS

Since the confirmation of the first case on 27<sup>th</sup> February 2020, the NCDC has released advisories and statements to help Nigerians and affected groups in particular to respond to the pandemic

- NCDC has released [guidelines on the re-opening of places for worship](#).
- The Nigeria Police Force has released COVID-19 operational guidelines for the [Police and other Law Enforcement Agencies](#) in Nigeria
- NCDC and the Department of Hospital Services (Federal Ministry of Health) have updated the [case management guidelines](#) (version 3) with reviewed changes such as the discharge criteria and medication being used for the treatment of cases
- Guidelines have been issued for the [safe transportation of remains of persons suspected or confirmed to have died of COVID-19](#)
- Information on diagnostics of the COVID-19 virus can be found in our [detailed FAQ document](#).
- To increase our testing capacity, NCDC has issued guidelines for the [integration of private labs](#).
- Guidelines for [businesses and employers](#) have been updated.
- NCDC has updated its [case definition](#) , [community case definition](#) and [case management guide](#).
- NCDC releases periodic [public health advisories](#) to Nigerians on the COVID-19 disease.
- To adhere to post-lockdown measures, NCDC has released an [advisory on the use of face masks](#), as well as information on the [Use of Cloth face masks](#) and [how to make your cloth face masks](#).
- NCDC has released guidelines for the [management of pregnant women and nursing mothers](#) during the pandemic.
- To address burials of loved ones who die from COVID-19, guidelines have been issued to advise on the [management of dead bodies](#).
- For health centres managing cases, the following documents have been released- a guideline for the [Rational Use of Personal Protective Equipment in the care of COVID-19 cases](#).
- As part of plans to increase the testing capacity of the country, the NCDC published a [National Strategy to Scale Up Access to Coronavirus Disease Testing in Nigeria](#) document.
- The Presidential Task Force has published policies and announcements on COVID-19 [available on the website of the Presidency](#) – including presidential addresses, task force updates and information on livelihood and economic support.

## RESPONSE

On 28<sup>th</sup> February 2020, a multi-sectoral Emergency Operations Centre (EOC) was activated at Level 3 – the highest emergency level in Nigeria –led by NCDC in close coordination with the State Public Health EOCs (PHEOC).

- **Deployment of an additional Rapid Response Team (RRT) to Gombe State**
- **Lab optimisation ongoing in Ondo**
- **Development of draft guidance for states on reporting loss of follow up cases**
- **Ongoing daily review of Surveillance Outbreak Response Management and Analysis System (SORMAS) data quality**
- **Conducted a teleconference with State Clinicians and stakeholders on management of COVID-19 patients**
- **Completed training for 540 Healthcare Workers (HCWs) in public and private health facilities in Osun State in collaboration with State and partners**
- **Training of private school owners on IPC practices for resumption post COVID-19 lockdown in Osun State**
- **Distributed IPC job aids to all health facilities in Osun State**
- **Engagement with states on contact tracing and case finding challenges**
- **Development of Influenza Like Illnesses (ILI) and Severe Acute Respiratory Infection (SARI) protocols for states**
- **Development of implementation plans for activities in surveillance work plan**

- Out of 356 Persons of Interest (POIs) that arrived in FCT, Abuja 310 were tested with 5 positive results reported (2% positivity rate)
- Selection of IPC focal persons for 10 functional private health facilities in Enugu
- Ongoing orientation meeting with Federal Ministries of Agriculture, Women Affairs, Youth and Sports on risk communication and community engagement
- Development of Micro plan for intensification of risk communication and community engagement in 21 high burden Local Government Areas (LGAs)
- All education materials can be found via [www.covid19.ncdc.gov.ng](http://www.covid19.ncdc.gov.ng)