

# SITUATION REPORT

## Nigeria Centre For Disease Control (NCDC)

[www.ncdc.gov.ng](http://www.ncdc.gov.ng)

PLOT 800 EBITU UKIWE STREET, JABI ABUJA, NIGERIA. TOLL FREE CALL: 0800-970000-10. E: [info@ncdc.gov.ng](mailto:info@ncdc.gov.ng)



@NCDCgov

<b>TITLE:</b>	<b>NIGERIA MONKEYPOX MONTHLY SITUATION REPORT</b>
<b>SERIAL NUMBER:</b>	<b>028</b>
<b>DATE:</b>	<b>November 14 - December 13, 2018</b>

### OUTBREAK INDICATORS FOR 2018

KEY INDICATORS	NUMBERS
New suspected cases in reporting month	15
New confirmed cases in reporting month	6
Total number of cases reported in 2018	114
Total confirmed cases in 2018	45
Total deaths in 2018	1
Confirmed Health worker infection	2

### EPIDEMIOLOGICAL SUMMARY

- Nigeria continues to report sporadic cases of monkeypox since the beginning of 2018.
- In the reporting month, fifteen (15) new suspected monkeypox cases were reported out of which six confirmed cases were recorded in five states (Rivers -1, Bayelsa -2, Delta -1, Cross Rivers -1, Edo -1)
- A total of 114 suspected, 45 confirmed, one probable cases and one death have been reported in 2018. The 45 cases confirmed were recorded in 13 states (Rivers, Bayelsa, Delta, Oyo, Cross River, Edo, Enugu, Imo, Lagos, Plateau, Abia, Anambra and Nasarawa)
- Since the beginning of the outbreak in September 2017, 311 suspected cases have been reported in 26 states. Of this, 132 confirmed cases in 17 states (Rivers, Bayelsa, Cross River, Imo, Akwa Ibom, Lagos, Delta, Edo, FCT, Abia, Oyo, Enugu, Ekiti, Nasarawa, Benue, Plateau, Anambra) and 7 deaths were recorded.
- Genetic sequencing suggests multiple sources of introduction of monkeypox virus into the human population with evidence of human to human transmission.
- Males are more affected with 73.3 % of confirmed cases in 2018
- Persons within the age group, 21-40 years are more affected.

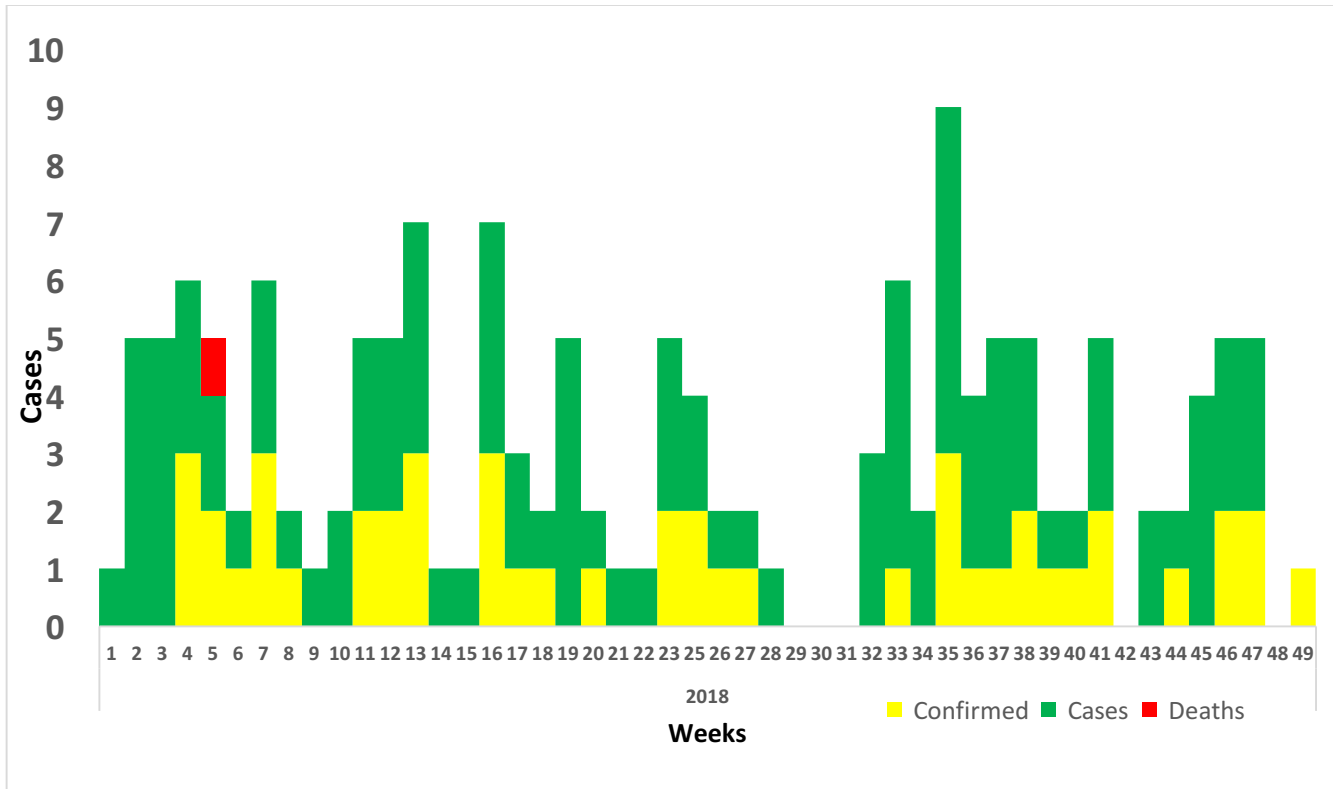


Figure 1: Weekly trend of Nigeria monkeypox cases as at 13 December, 2018

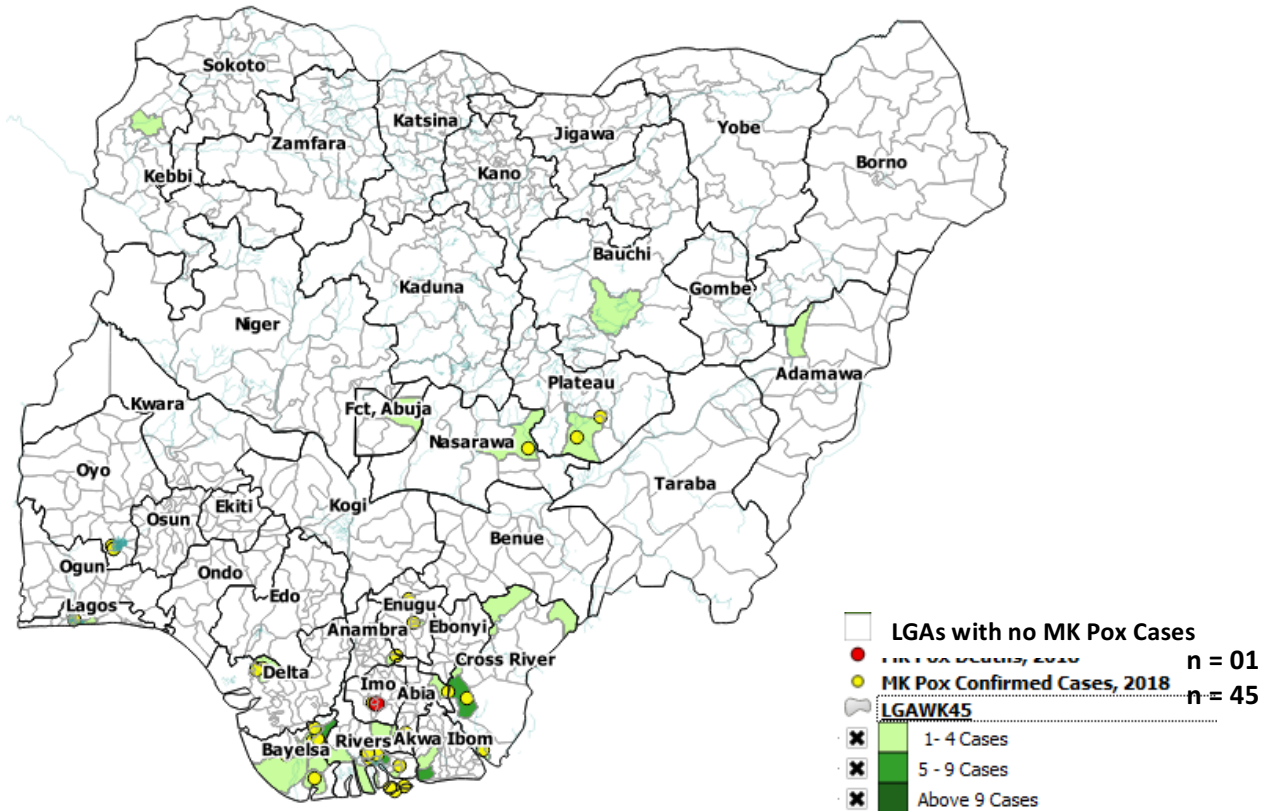


Figure 2: Map of Nigeria showing distribution of monkeypox cases by Local Government Area as at 13 December, 2018

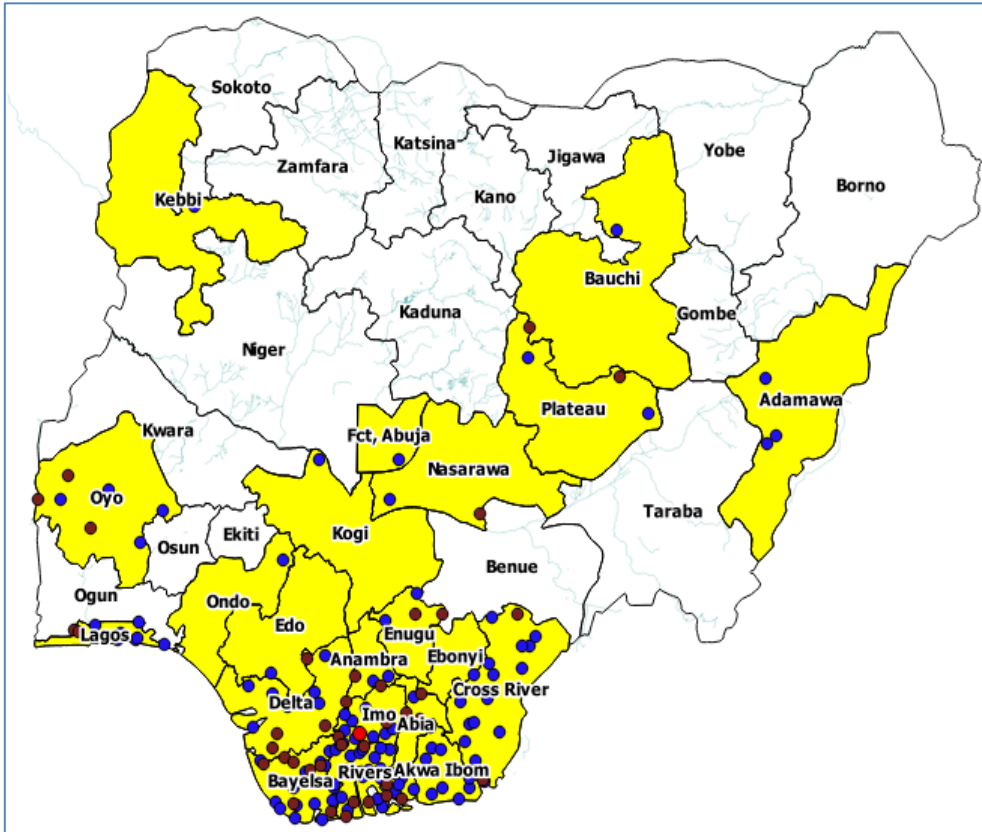


Figure 3: Map of Nigeria showing distribution of monkeypox cases by state as at 13 December, 2018

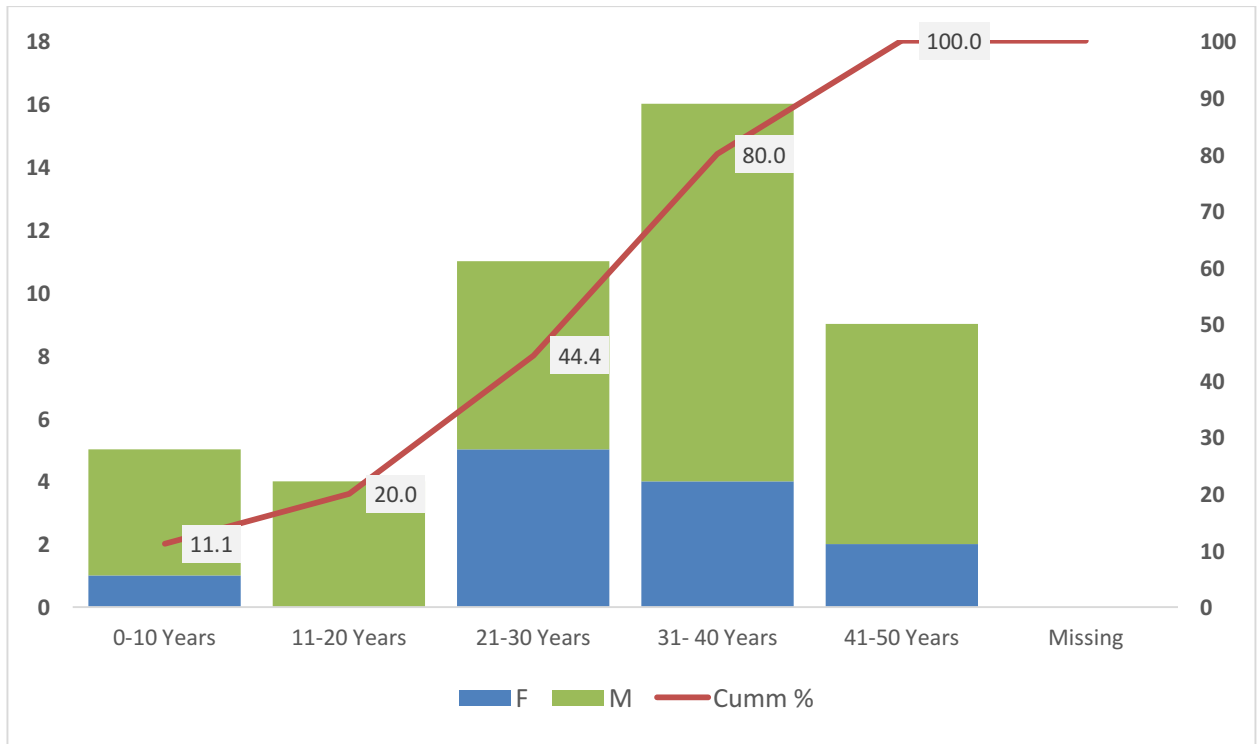


Figure 4: Distribution of Nigeria confirmed monkeypox cases by age and sex as at 13 December, 2018