



COVID-19 SITUATION REPORT

WEEKLY EPIDEMIOLOGICAL REPORT 2

Epi Week 43: 19th – 25th October 2020

DATA AS REPORTED AND ACCURATE BY NCDC AS AT MIDNIGHT 25TH OCTOBER 2020

STATE OF THE NATION

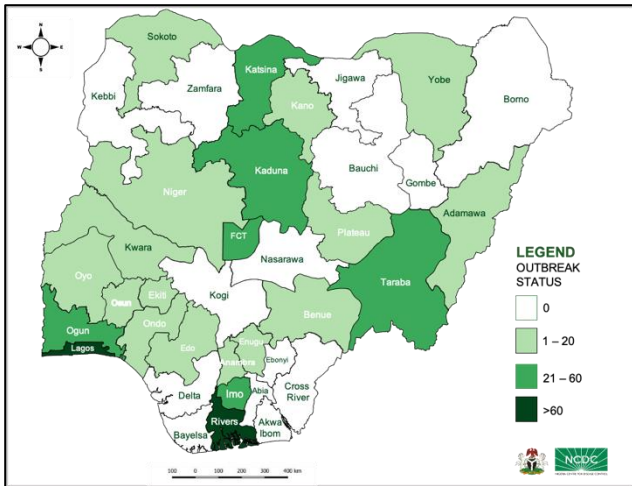


Fig 1. Distribution of cases (EpiWeek 43)

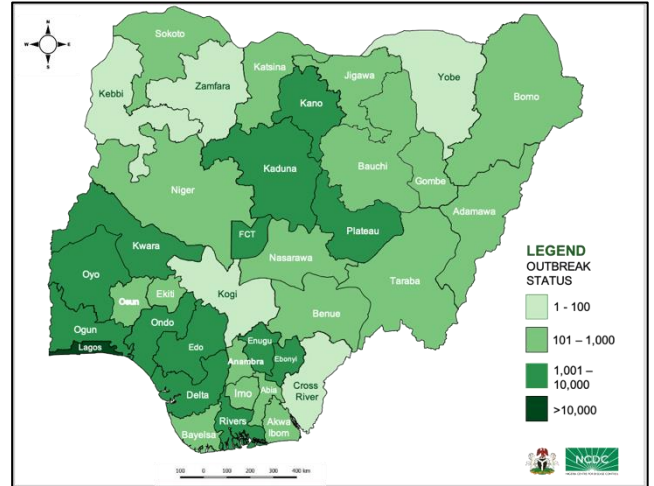


Fig 2. Distribution of cumulative cases

HIGHLIGHTS

- In Week 43, the number of new confirmed cases decreased to **552** from **1,174** in week 42. These were reported in **23** states (Tables 1 & 2)
- The decline in confirmed cases is partly related to the challenges and associated movement restrictions across several states, that affected turnout at sample collection sites
- In Week 43, the number of discharged cases decreased to **854** from **4,876** in week 42. These were reported in **17** states (Tables 1 & 3)
- Cumulatively, since the outbreak began in Week **9**, there have been **1,130** deaths reported with a case fatality rate (CFR) of **1.8%** (Tables 1 & 4)
- The number of states, and the FCT, that have reported a death in the last one week are **5**
- In Week 43, the number of in-bound international travellers at our airports decreased to **2,538** from **3,241** in week 42. This is from **2** international airports (Lagos-MMIA and FCT-NAIA)
- In Week 43, the number of international travellers with a positive result after the 7th day of arrival increased to **4** from **3** in week 42.
- In Africa, the count for confirmed COVID-19 cases is **1,716,864** with **41,262** resulting in a case fatality rate of **2.4%**
- Globally, the count for confirmed COVID-19 cases is **42,512,186** with **1,147,301** deaths resulting in a case fatality rate of **2.7%**

GENERAL FACT SHEET – DATA AS AT 25TH OCTOBER 2020

Table 1: States with reported laboratory-confirmed COVID-19 cases, recoveries, deaths, samples tested and days since last reported case

STATES	CONFIRMED		RECOVERIES		DEATHS		TESTING			ACTIVE CASES
	Total	Last Week	Total	Last Week	Total	Last Week	Total	Last Week	Test Positivity rate (One Week)*	
Abia	898	0	872	0	8	0	8,645	133	0.0	18
Adamawa	257	9	229	0	19	0	2,568	170	5.3	9
Akwa Ibom	295	0	284	0	8	0	3,298	0	0.0	3
Anambra	277	2	248	19	19	0	2,359	203	1.0	10
Bauchi	710	0	696	6	14	0	8,839	11	0.0	0
Bayelsa	403	0	381	2	21	0	2,524	180	0.0	1
Benue	486	2	435	22	11	1	3,893	43	4.7	40
Borno	745	0	705	0	36	0	12,760	377	0.0	4
Cross River	87	0	74	0	9	0	1,558	93	0.0	4
Delta	1,812	0	1,737	0	49	0	12,838	66	0.0	26
Ebonyi	1,049	0	1,011	0	30	0	6,160	67	0.0	8
Edo	2,648	5	2,522	0	108	1	17,770	219	2.3	18
Ekiti	332	3	316	1	6	0	6,874	58	5.2	10
Enugu	1,314	1	1,269	0	21	0	8286	420	0.2	24
FCT	5,967	49	5,336	46	79	0	74,943	3,147	1.6	552
Gombe	883	0	747	0	25	0	24,286	1,367	0.0	111
Imo	614	25	580	16	12	0	7,026	828	3.0	22
Jigawa	325	0	308	0	11	0	2,974	3	0.0	6
Kaduna	2,617	59	2,504	42	42	0	25,498	1,430	4.1	71
Kano	1,742	1	1,682	1	54	0	51,743	3,751	0.0	6
Katsina	952	48	879	0	24	0	23,919	674	7.1	49
Kebbi	93	0	84	0	8	0	922	17	0.0	1
Kogi	5	0	3	0	2	0	268	4	0.0	0
Kwara	1,067	17	1,019	37	26	1	6,394	183	9.3	22
Lagos	20,807	162	19,800	371	207	0	140,082	531	30.5	800
Nasarawa	478	0	325	0	13	0	6,909	163	0.0	140
Niger	274	1	249	0	12	0	5,815	176	0.6	13

STATES	CONFIRMED		RECOVERIES		DEATHS		TESTING			ACTIVE CASES
	Total	Last Week	Total	Last Week	Total	Last Week	Total	Last Week	Test Positivity rate (One Week)*	
Ogun	2,010	30	1,839	87	29	0	15,636	1,419	2.1	142
Ondo	1,666	9	1,585	0	37	1	8,885	440	2.0	44
Osun	923	15	883	55	20	0	5,389	97	15.5	20
Oyo	3,423	8	2,561	5	42	1	23,807	396	2.0	820
Plateau	3,594	13	3,280	105	33	0	33,998	122	10.7	281
Rivers	2,773	64	2,633	37	59	0	44,614	2,900	2.2	81
Sokoto	165	3	145	0	17	0	6,003	1,025	0.3	3
Taraba	140	23	103	0	6	0	2,529	785	2.9	31
Yobe	82	3	68	2	8	0	1,019	21	14.3	6
Zamfara	79	0	73	0	5	0	1,123	0	0.0	1
Total	61,992	552	57,465	854	1,130	5	612,154	21,519	2.6	3,397

RETURNING PASSENGERS TESTS

Over the last week, the following laboratories carried out COVID-19 tests for returning passengers:

54Gene (Lagos):	3
54Gene (FCT):	4
MEDICAID (FCT):	68
CEDARCREST (FCT):	57
DNA Labs (FCT):	47
EHA Clinics:	126
TOTAL TESTS:	305

BACKLOG TESTS

EHA (FCT):	1,996
SOBI (Kwara):	183
TOTAL TESTS:	2,179

DAILY EPICURVE

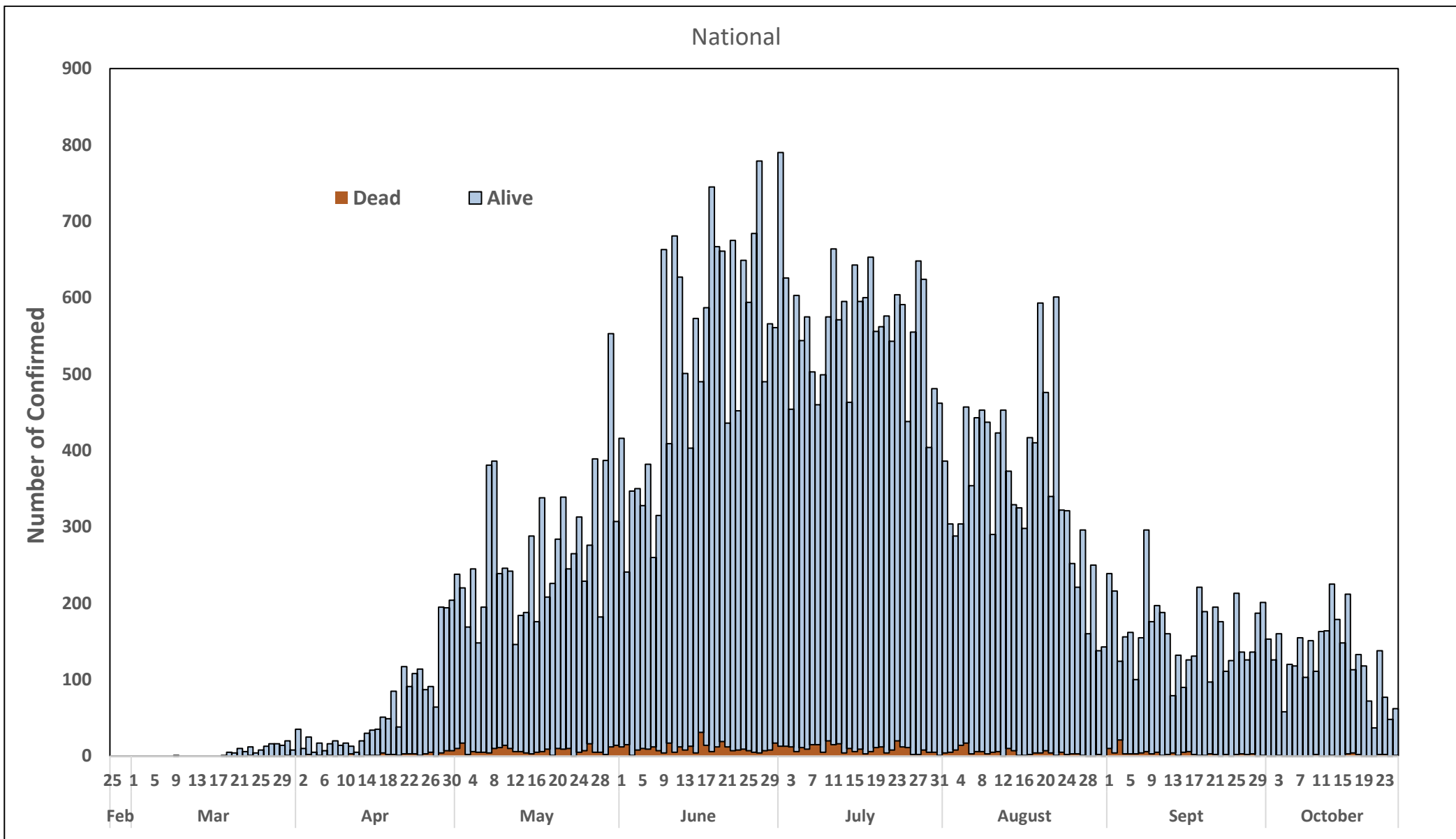


Figure 3: Daily Epidemic Curve of Confirmed Cases (WK9 – WK42) as reported per day

SELECTED CHARTS: AGE-GENDER BREAKDOWN

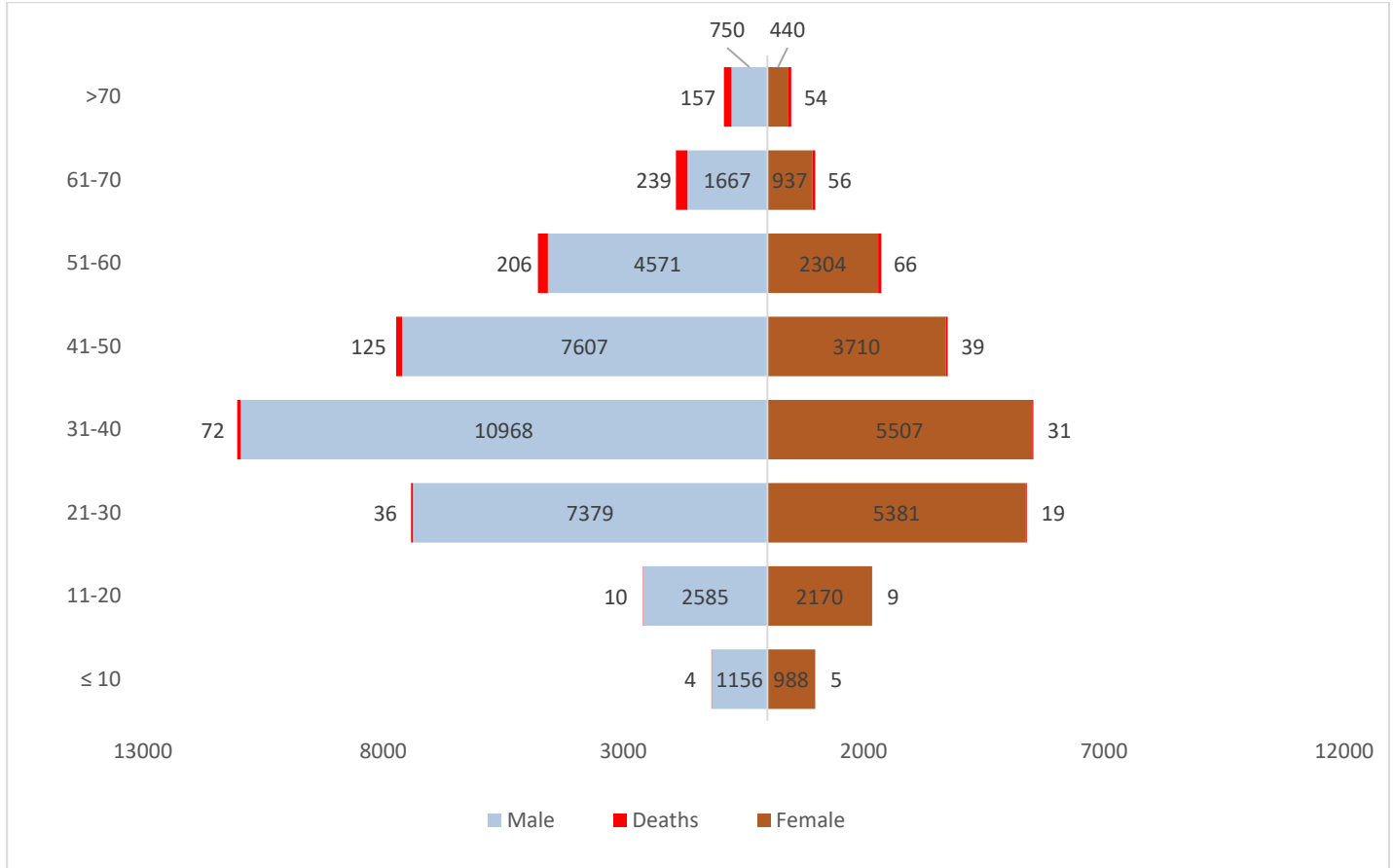


Figure 4: Chart with Age and Gender breakdown of cases and deaths

PROVENANCE

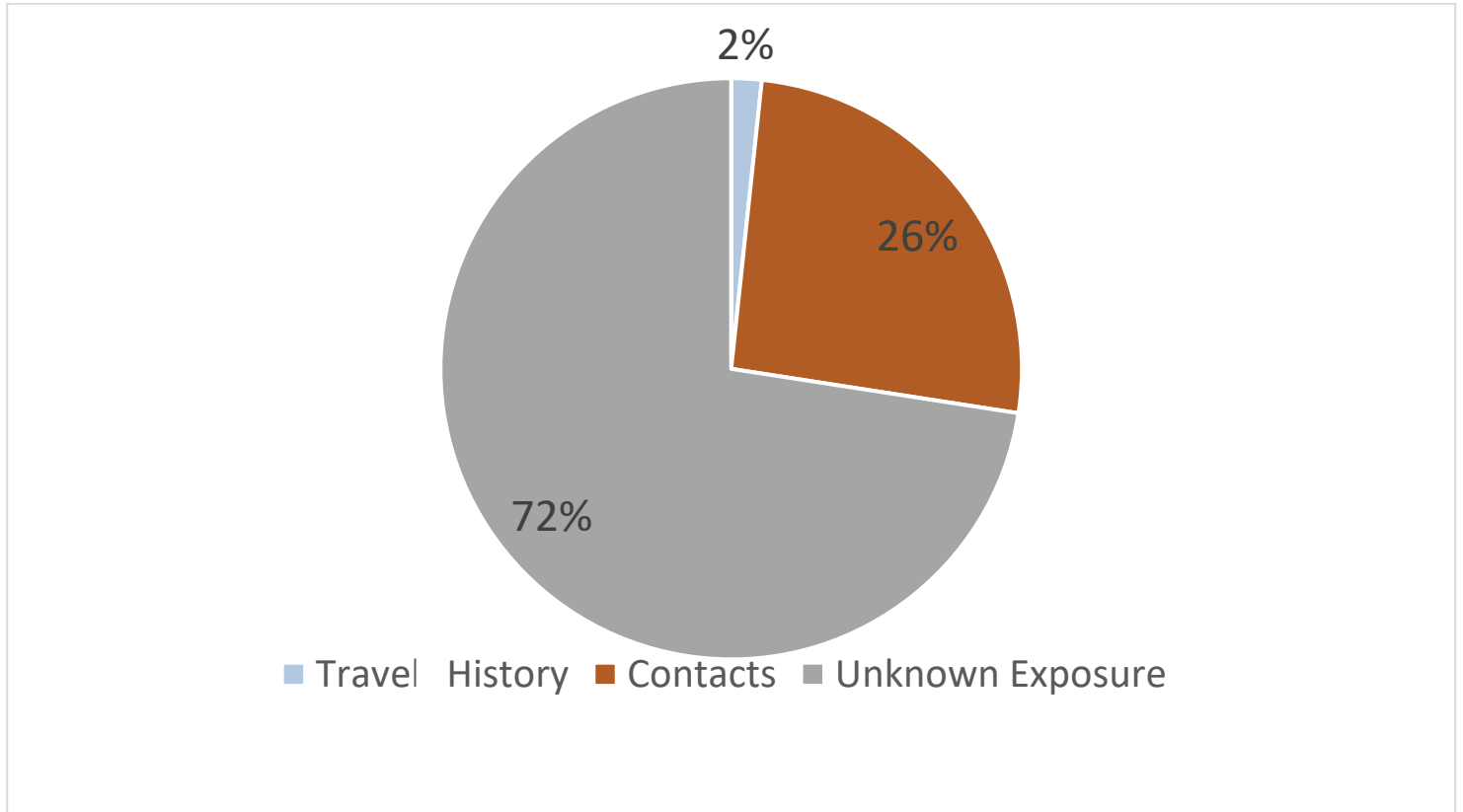


Figure 5: Provenance for confirmed COVID-19 cases (WK9 – WK43)

IN FOCUS: SAFE REOPENING OF NYSC CAMPS

The National Youth Service Corps (NYSC) is one of many schemes that have been disrupted because of the COVID-19 pandemic. As part of efforts to build back better, we are working to support NYSC staff and organisers to ensure a safe re-opening of their orientation camps nationwide.

As a major priority, NCDC, States and partners will work closely with NYSC authorities to ensure the prompt identification of COVID-19 cases for treatment,

In addition, NCDC has been working with the Ministry of Youth and Sports, through the NYSC, to put in place and strengthen Infection Prevention and Control (IPC) capacity in NYSC camps. This will be championed by an 'IPC Vanguard', in each camp, whose role will be to help monitor compliance with COVID-19 preventive measures to significantly lower the risk of infection.

Last week, we concluded the pilot risk assessment in the Abuja orientation camp, which helped us refine our risk assessment tools which will be rolled-out across the country this week. These tools will be used by the state NYSC and surveillance teams to evaluate potential risks and promptly mitigate them.

We will continue working collaboratively with NYSC to ensure the safety of Nigerian youths and the camp community as they resume activities across the country. As corps members resume, we implore citizens to remain aware of the risks of COVID-19, and work with public health authorities to ensure the continued safety of the country.

RESPONSE

On 28th February 2020, a multi-sectoral Emergency Operations Centre (EOC) was activated at Level 3 – the highest emergency level in Nigeria –led by NCDC in close coordination with the State Public Health EOCs (PHEOC) and through the deployment of **43** RRTs to states.

- **Conducted strategic engagement with State Epidemiologists (SEs) and thematic COVID-19 response team leads to identify state specific challenges and improve on the ongoing response**
- **Ongoing training of healthcare workers in Taraba state**
- **Developed advisory on use of Rapid Diagnostics Tests (RDT) Kits for States**
- **Finalised planning on testing at National Youth Service Corps (NYSC) orientation camps**
- **Engaging with State Infection Prevention and Control (IPC) Focal Persons on nationwide NYSC orientation camp assessment**
- **Trained community health workers from across all wards/LGAs of Kaduna State on IPC supported by partners**
- **Ongoing distribution of reagents and commodities to laboratories in the network for October 2020**
- **Planning for communication activities for NYSC and Law School re-opening**
- **Conducted media appearance on Human Right radio, WAZOBIA, Kano Radio and FM Enugu on with discussion on safe school resumption**
- **Ongoing airing of new jingles by Federal Ministry of Information**
- **Ongoing Strengthening Laboratory Management Toward Accreditation (SLMTA) baseline audit for Polymerase Chain Reaction testing laboratories in Lafia, Nasarawa State and ISTH Irrua, Edo State**
- **Bi-weekly messaging priorities and key messages developed for dissemination to stakeholders and states**

PREPAREDNESS

Since the confirmation of the first case on 27th February 2020, the NCDC has released advisories and statements to help Nigerians and affected groups in particular to respond to the pandemic

- NCDC published guidance on safe school re-opening: [Public Health guidance for Safe School re-opening in Nigeria](#)
- NCDC published second interim guidance – Infection Prevention and Control: [Recommendations during health care provision for suspected and confirmed cases of COVID-19](#)
- NCDC recently published the first edition of a quick reference guide on setting up sample collection centre - [A step by step guide on setting up a sample collection centre](#)
- NCDC has launched an online course on [Infection, Prevention and Control \(IPC\) for COVID-19](#) NCDC eLearning platform
- Ahead of forthcoming elections in the country, NCDC has issued [Guidelines for Conducting Elections During the COVID-19 Outbreak in Nigeria](#).
- To protect our elders, and those with pre-existing medical conditions, NCDC has issued an [Advisory for Vulnerable Groups](#).
- NCDC has released [guidelines on the re-opening of places for worship](#).
- NCDC has released [Strategies to Improve Surveillance for COVID-19 Guidance for States](#)
- The Nigeria Police Force has released COVID-19 operational guidelines for the [Police and other Law Enforcement Agencies](#) in Nigeria
- Guidelines have been issued for the [safe transportation of remains of persons suspected or confirmed to have died of COVID-19](#)
- Information on diagnostics of the COVID-19 virus can be found in our [detailed FAQ document](#).
- To increase our testing capacity, NCDC has issued guidelines for the [integration of private labs](#).
- Guidelines for [businesses and employers](#) have been updated.
- NCDC has updated its [case definition](#) , [community case definition](#) and [case management guide](#).
- NCDC releases periodic [public health advisories](#) to Nigerians on the COVID-19 disease.
- To adhere to post-lockdown measures, NCDC has released an [advisory on the use of face masks](#), as well as information on the [Use of Cloth face masks](#) and [how to make your cloth face masks](#).
- NCDC has released guidelines for the [management of pregnant women and nursing mothers](#) during the pandemic.
- To address burials of loved ones who die from COVID-19, guidelines have been issued to advise on the [management of dead bodies](#).
- For health centres managing cases, the following documents have been released- a guideline for the [Rational Use of Personal Protective Equipment in the care of COVID-19 cases](#).
- As part of plans to increase the testing capacity of the country, the NCDC published a [National Strategy to Scale Up Access to Coronavirus Disease Testing in Nigeria](#) document.
- The Presidential Task Force has published policies and announcements on COVID-19 [available on the website of the Presidency](#) – including presidential addresses, task force updates and information on livelihood and economic support.

INFORMATION RESOURCES

- Nigeria Centre for Disease Control: www.covid19.ncdc.gov.ng | www.ncdc.gov.ng
- Nigerian Presidency Website on COVID-19: www.statehouse.gov.ng/COVID19
- Africa CDC: www.africa.cdc.org | <https://africacdc.org/covid-19/> (source for Africa updates)
- WHO Coronavirus Disease (COVID-19) Dashboard (source for global updates) <https://covid19.who.int/>