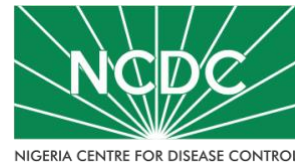


COVID-19 SITUATION REPORT

SITUATION REPORT 168

Friday, 14th August 2020



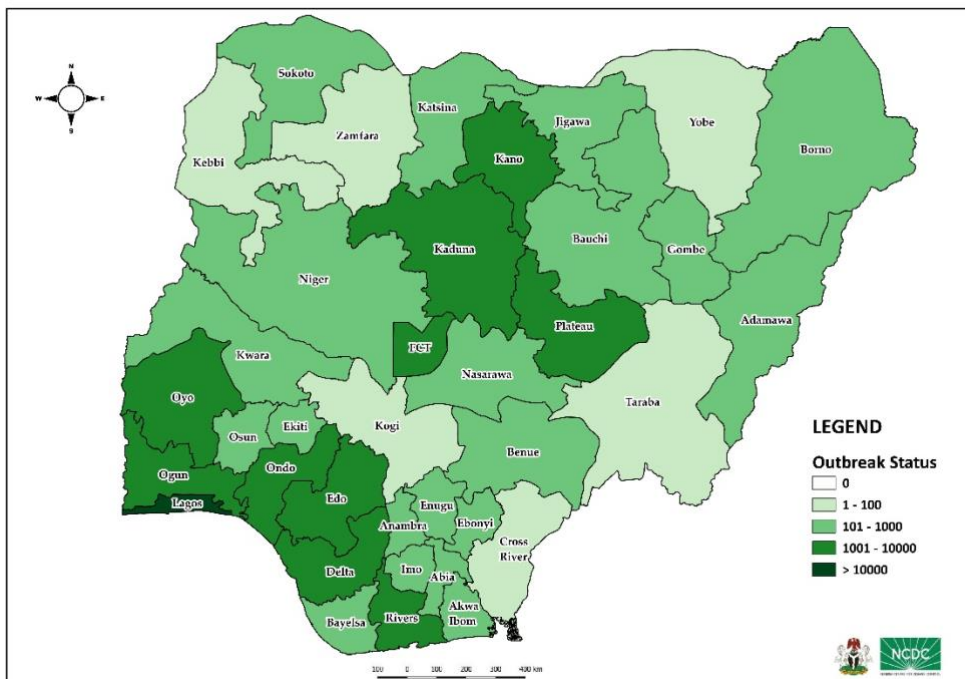
DATA AS REPORTED AND ACCURATE BY NCDC AS AT MIDNIGHT 14TH AUGUST 2020

HIGHLIGHTS

- Three hundred and twenty-nine (**329**) confirmed cases were reported in the last 24 hours from **21** states – Lagos (113), Kaduna (49), FCT (33), Plateau (24), Kano (16), Edo (15), Ogun (14), Delta (13), Osun (10), Oyo (8), Bayelsa (6), Ekiti (6), Akwa Ibom (5), Borno (4), Enugu (4), Ebonyi (3), Rivers (2), Bauchi (1), Gombe (1), Nasarawa (1) and Niger (1).
- One thousand, six hundred and eighty-nine (**1,689**) discharges have been reported in the last 24 hours in **19** states – Lagos (1,325), Enugu (70), Plateau (64), Nasarawa (49), Kaduna (43), Osun (27), Oyo (26), FCT (17), Kano (14), Delta (10), Edo (10), Rivers (10), Ogun (7), Bayelsa (5), Bauchi (4), Ekiti (4), Kwara (2), Borno (1) and Gombe (1).
- Seven (**7**) deaths were reported in the last 24 hours in **four** states – Nasarawa (4), Ebonyi (1), Osun (1) and Oyo (1).
- All **36** states in Nigeria, and the FCT, have reported a confirmed case.

STATE OF THE NATION

Figure 1: Map of Nigeria showing 36 states and FCT affected by COVID-19



SITUATION UPDATES

Total (New in the last 24 hours)

SAMPLES TESTED

347,545 (3,148)

CONFIRMED CASES

48,445 (329)

AFFECTED STATES INCLUDING FCT

37

DISCHARGED CASES

35,998 (1,689)

CONFIRMED FATALITIES

973 (7) – 2.0% CFR

DEMOGRAPHICS

MALE – 31,063 (64%)

FEMALE – 17,382 (36%)

MOST AFFECTED AGE GROUP

31 - 40 (25%)

PERSONS OF INTEREST

11,328 (Total)

11,191 (98.8% - Exceeded Follow Up)

PROVENANCE

TRAVEL HISTORY – 848 (2%)

CONTACTS – 11,803 (24%)

UNKNOWN EXPOSURE – 35,794 (74%)

GLOBAL UPDATES

TOTAL NUMBER OF CASES

20,730,456 (751,154 deaths)

COUNTRIES & TERRITORIES AFFECTED*

216

*Excluding the 2 International Conveyance

GENERAL FACT SHEET – DATA AS AT 14th AUGUST 2020

Table 1: States with reported laboratory-confirmed COVID-19 cases, recoveries, deaths and days since last reported case

STATES	CONFIRMED CASES		DISCHARGED CASES		DEATHS		TOTAL ACTIVE CASES	DAYS SINCE LAST REPORTED CASE
	TOTAL	NEW	TOTAL	NEW	TOTAL	NEW		
Lagos	16,369	113	14,457	1,325 ^a	201	0	1,711	0
FCT	4,665	33	1,342	17	46	0	3,277	0
Oyo	2,943	8	1,530	26	32	1	1,381	0
Edo	2,414	15	2,131	10	100	0	183	0
Rivers	1,993	2	1,785	10	56	0	152	0
Kaduna	1,755	49	1,536	43	12	0	207	0
Plateau	1,689	24	800	64	24	0	865	0
Kano	1,677	16	1,334	14	54	0	289	0
Delta	1,639	13	1,440	10	44	0	155	0
Ogun	1,535	14	1,295	7	24	0	216	0
Ondo	1,373	0	770	0	28	0	575	1
Enugu	980	4	720	70	19	0	241	0
Ebonyi	911	3	852	0	27	1	32	0
Kwara	888	0	593	2	23	0	272	1
Katsina	746	0	457	0	24	0	265	11
Osun	729	10	368	27	14	1	347	0
Borno	702	4	577	1	36	0	89	0
Abia	677	0	546	0	5	0	126	1
Gombe	648	1	577	1	23	0	48	0
Bauchi	581	1	537	4	14	0	30	0
Imo	494	0	168	0	10	0	316	1
Benue	430	0	139	0	9	0	282	3
Nasarawa	373	1	272	49	12	4	89	0
Bayelsa	352	6	321	5	21	0	10	0
Jigawa	322	0	308	0	11	0	3	29
Akwa Ibom	246	5	207	0	8	0	31	0
Niger	229	1	168	0	12	0	49	0
Ekiti	200	6	85	4	3	0	112	0
Adamawa	185	0	104	0	12	0	69	7
Anambra	156	0	131	0	18	0	7	3
Sokoto	154	0	138	0	16	0	0	20
Kebbi	90	0	82	0	8	0	0	24
Taraba	78	0	55	0	4	0	19	3
Zamfara	77	0	71	0	5	0	1	27
Cross River	73	0	42	0	8	0	23	4
Yobe	67	0	57	0	8	0	2	15
Kogi	5	0	3	0	2	0	0	42
Total	48,445	329	35,998	1,689	973	7	11,474	

States, including FCT, are arranged in descending order by number of total confirmed cases and then alphabetical order

note

^a All discharges reported in Lagos are community recoveries over the last two weeks reported in line with new case management guidelines

SELECTED CHARTS

Figure 2: Daily Epidemic Curve of Confirmed Cases (WK9 – WK33)

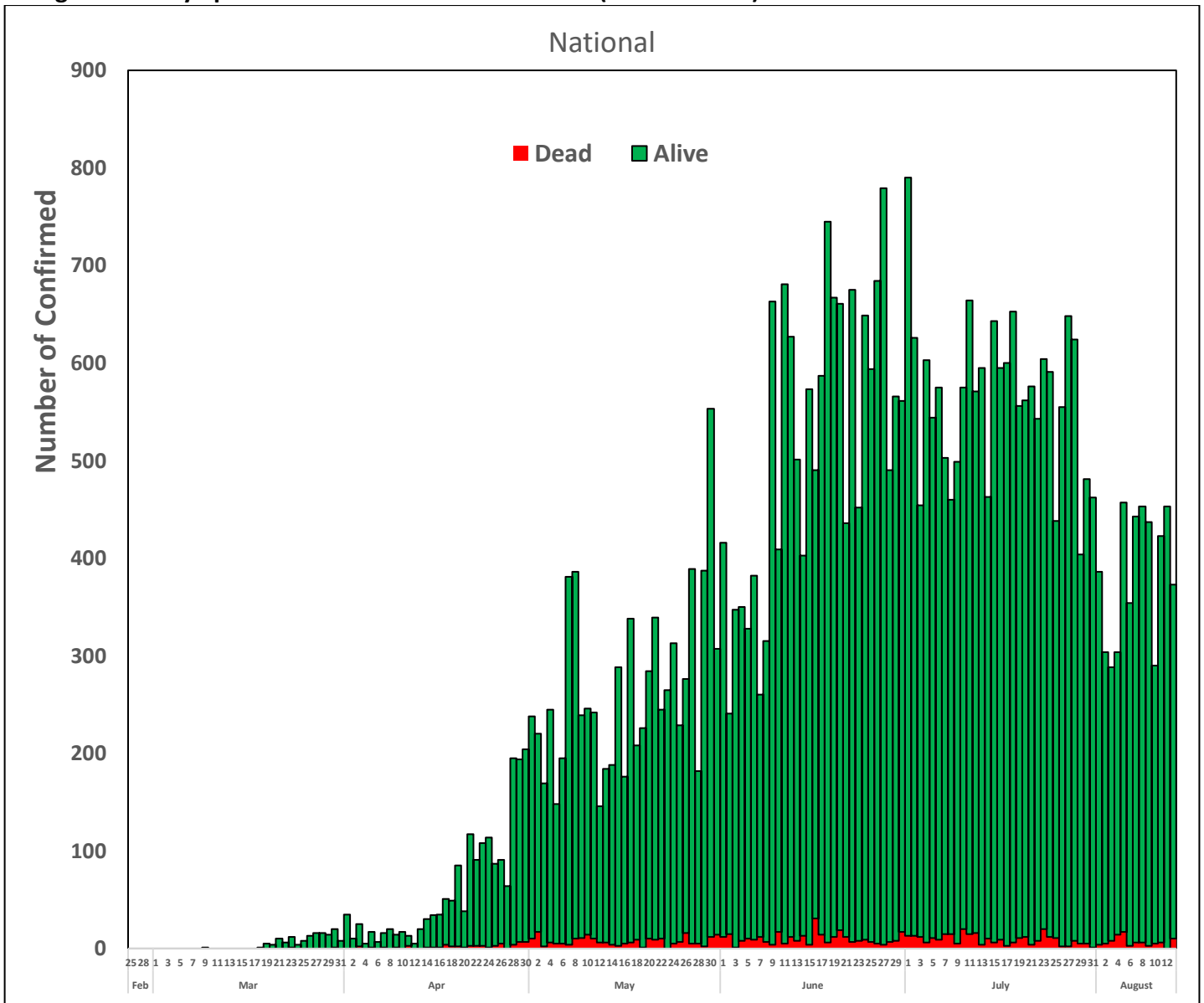
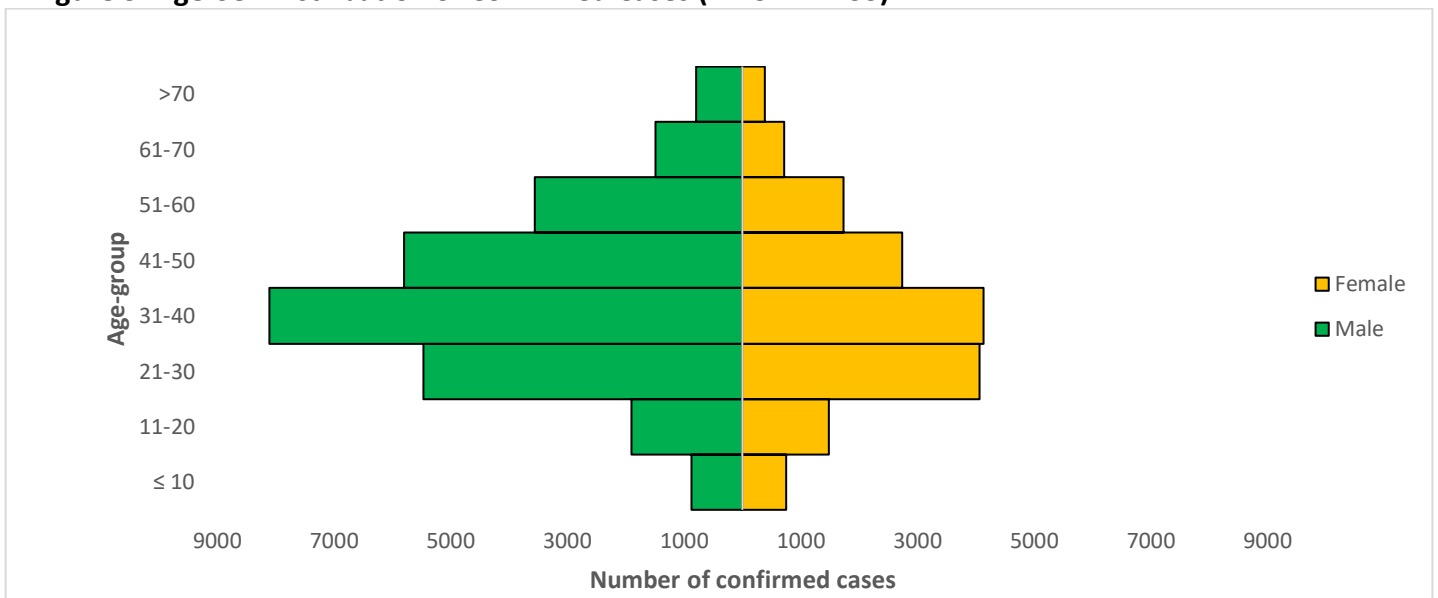


Figure 3: Age-Sex Distribution of Confirmed Cases (WK9 – WK33)



PREPAREDNESS

Since the confirmation of the first case on 27th February 2020, the NCDC has released advisories and statements to help Nigerians and affected groups in particular to respond to the pandemic

- NCDC has launched an online course on [Infection, Prevention and Control \(IPC\) for COVID-19](#) NCDC eLearning platform
- Ahead of forthcoming elections in the country, NCDC has issued [Guidelines for Conducting Elections During the COVID-19 Outbreak in Nigeria](#).
- To protect our elders, and those with pre-existing medical conditions, NCDC has issued an [Advisory for Vulnerable Groups](#).
- NCDC has released [guidelines on the re-opening of places for worship](#).
- NCDC has released [Strategies to Improve Surveillance for COVID-19 Guidance for States](#)
- The Nigeria Police Force has released COVID-19 operational guidelines for the [Police and other Law Enforcement Agencies](#) in Nigeria
- Guidelines have been issued for the [safe transportation of remains of persons suspected or confirmed to have died of COVID-19](#)
- Information on diagnostics of the COVID-19 virus can be found in our [detailed FAQ document](#).
- To increase our testing capacity, NCDC has issued guidelines for the [integration of private labs](#).
- Guidelines for [businesses and employers](#) have been updated.
- NCDC has updated its [case definition](#) , [community case definition](#) and [case management guide](#).
- NCDC releases periodic [public health advisories](#) to Nigerians on the COVID-19 disease.
- To adhere to post-lockdown measures, NCDC has released an [advisory on the use of face masks](#), as well as information on the [Use of Cloth face masks](#) and [how to make your cloth face masks](#).
- NCDC has released guidelines for the [management of pregnant women and nursing mothers](#) during the pandemic.
- To address burials of loved ones who die from COVID-19, guidelines have been issued to advise on the [management of dead bodies](#).
- For health centres managing cases, the following documents have been released- a guideline for the [Rational Use of Personal Protective Equipment in the care of COVID-19 cases](#).
- As part of plans to increase the testing capacity of the country, the NCDC published a [National Strategy to Scale Up Access to Coronavirus Disease Testing in Nigeria](#) document.
- The Presidential Task Force has published policies and announcements on COVID-19 [available on the website of the Presidency](#) – including presidential addresses, task force updates and information on livelihood and economic support.

RESPONSE

On 28th February 2020, a multi-sectoral Emergency Operations Centre (EOC) was activated at Level 3 – the highest emergency level in Nigeria –led by NCDC in close coordination with the State Public Health EOCs (PHEOC).

- **Held a high level virtual strategic meeting with State Epidemiologists to address key issues towards improving response across states**
- **Set up four (4) sample collection sites in hotspot Local Government Areas (LGAs) in Lagos State**
- **Conducted a 2-day virtual Biosafety and Biosecurity training for 15 laboratorians from eight (8) laboratories in the network**
- **Ongoing decontamination and fumigation of all private and public schools in Abia State**
- **Supported the development of guidelines for Standard Organisation of Nigeria to improve stakeholders engagement**
- Developed a concise advisory for case finding and sample collection
- Activated a new GeneXpert laboratory in Onitsha, Anambra State
- Conducted IPC training for teachers across the three senatorial zones in preparation for school reopening in Abia State

- Engaged with Adamawa, Edo and Jigawa States on improving compliance to preventive measures and resolving community resistance
- All education materials can be found via www.covid19.ncdc.gov.ng