

# COVID-19 SITUATION REPORT

## SITUATION REPORT 226

Sunday, 11<sup>th</sup> October 2020



DATA AS REPORTED AND ACCURATE BY NCDC AS AT MIDNIGHT 11<sup>TH</sup> OCTOBER 2020

### HIGHLIGHTS

- One hundred and sixty-three (**163**) confirmed cases were reported in the last 24 hours from **12** states – Lagos (113), Kaduna (21), Osun (8), Ondo (5), Oyo (5), Ogun (3), Bayelsa (2), Taraba (2), Edo (1), FCT (1), Katsina (1) and Plateau (1).
- Twenty-four (**24**) discharges have been reported in the last 24 hours in **five** states – Rivers (15), Kaduna (5), FCT (2), Katsina (1) and Osun (1).
- **No** death was reported in the last 24 hours.
- All **36** states in Nigeria, and the FCT, have reported a confirmed case.

### SITUATION UPDATES

Total (New in the last 24 hours)

SAMPLES TESTED

**554,006 (969)<sup>1</sup>**

CONFIRMED CASES

**60,266 (163)**

AFFECTED STATES INCLUDING FCT

**37**

DISCHARGED CASES

**51,735 (24)**

CONFIRMED FATALITIES

**1,115 (0) – 1.9% CFR**

DEMOGRAPHICS

MALE – 38,327 (64%)

FEMALE – 21,939 (36%)

MOST AFFECTED AGE GROUP

31 - 40 (27%)

PERSONS OF INTEREST

**33,424 (Total)**

**30,388 (90.9% - Exceeded Follow Up)**

PROVENANCE

TRAVEL HISTORY – 1,013 (2%)

CONTACTS – 15,661 (26%)

UNKNOWN EXPOSURE – 43,592 (72%)

GLOBAL UPDATES

TOTAL NUMBER OF CASES

**37,109,851 (1,070,355 deaths)**

COUNTRIES & TERRITORIES AFFECTED

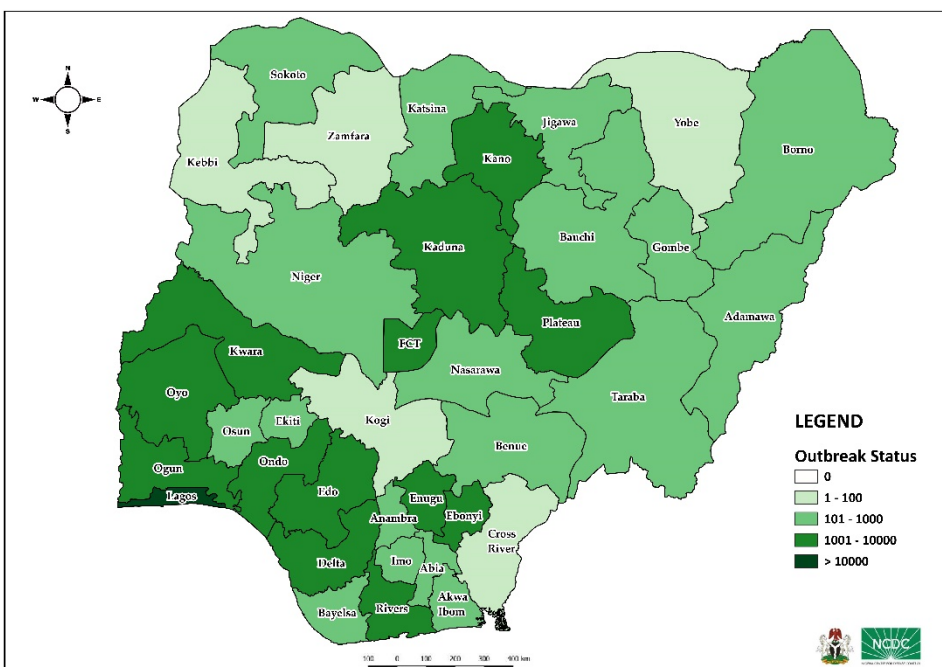
**216\***

<sup>1</sup>Includes 106 travel tests from FCT and 54 Gene lab Lagos travel data

\*Excluding the 2 International Conveyance

### STATE OF THE NATION

Figure 1: Map of Nigeria showing 36 states and FCT affected by COVID-19



# GENERAL FACT SHEET – DATA AS AT 11<sup>TH</sup> OCTOBER 2020

Table 1: States with reported laboratory-confirmed COVID-19 cases, recoveries, deaths and days since last reported case

STATES	CONFIRMED CASES		DISCHARGED CASES		DEATHS		TOTAL ACTIVE CASES	DAYS SINCE LAST REPORTED CASE
	TOTAL	NEW	TOTAL	NEW	TOTAL	NEW		
Lagos	20,022	113	15,250	0	204	0	4,568	0
FCT	5,806	1	5,227	2	79	0	500	0
Plateau	3,537	1	2,998	0	33	0	506	0
Oyo	3,304	5	2,553	0	40	0	711	0
Rivers	2,661	0	2,496	15	59	0	106	1
Edo	2,636	1	2,503	0	107	0	26	0
Kaduna	2,508	21	2,392	5	41	0	75	0
Ogun	1,939	3	1,741	0	28	0	170	0
Delta	1,803	0	1,737	0	49	0	17	6
Kano	1,740	0	1,675	0	54	0	11	3
Ondo	1,643	5	1,545	0	36	0	62	0
Enugu	1,289	0	1,166	0	21	0	102	16
Kwara	1,050	0	982	0	25	0	43	4
Ebonyi	1,042	0	1,008	0	30	0	4	10
Osun	903	8	816	1	18	0	69	0
Abia	898	0	872	0	8	0	18	8
Katsina	895	1	869	1	24	0	2	0
Gombe	883	0	747	0	25	0	111	12
Borno	745	0	705	0	36	0	4	12
Bauchi	710	0	687	0	14	0	9	1
Imo	583	0	551	0	12	0	20	1
Benue	482	0	413	0	10	0	59	3
Nasarawa	469	0	325	0	13	0	131	3
Bayelsa	403	2	376	0	21	0	6	0
Jigawa	325	0	308	0	11	0	6	16
Ekiti	323	0	312	0	6	0	5	2
Akwa Ibom	295	0	278	0	8	0	9	2
Niger	261	0	242	0	12	0	7	5
Anambra	250	0	219	0	19	0	12	5
Adamawa	248	0	208	0	17	0	23	11
Sokoto	162	0	145	0	17	0	0	16
Taraba	108	2	89	0	6	0	13	0
Kebbi	93	0	84	0	8	0	1	44
Cross River	87	0	74	0	9	0	4	17
Zamfara	79	0	73	0	5	0	1	9
Yobe	79	0	66	0	8	0	5	1
Kogi	5	0	3	0	2	0	0	100
<b>Total</b>	<b>60,266</b>	<b>163</b>	<b>51,735</b>	<b>24</b>	<b>1,115</b>	<b>0</b>	<b>7,416</b>	

States, including FCT, are arranged in descending order by number of total confirmed cases and then alphabetical order

# SELECTED CHARTS

Figure 2: Daily Epidemic Curve of Confirmed Cases (WK9 – WK41)

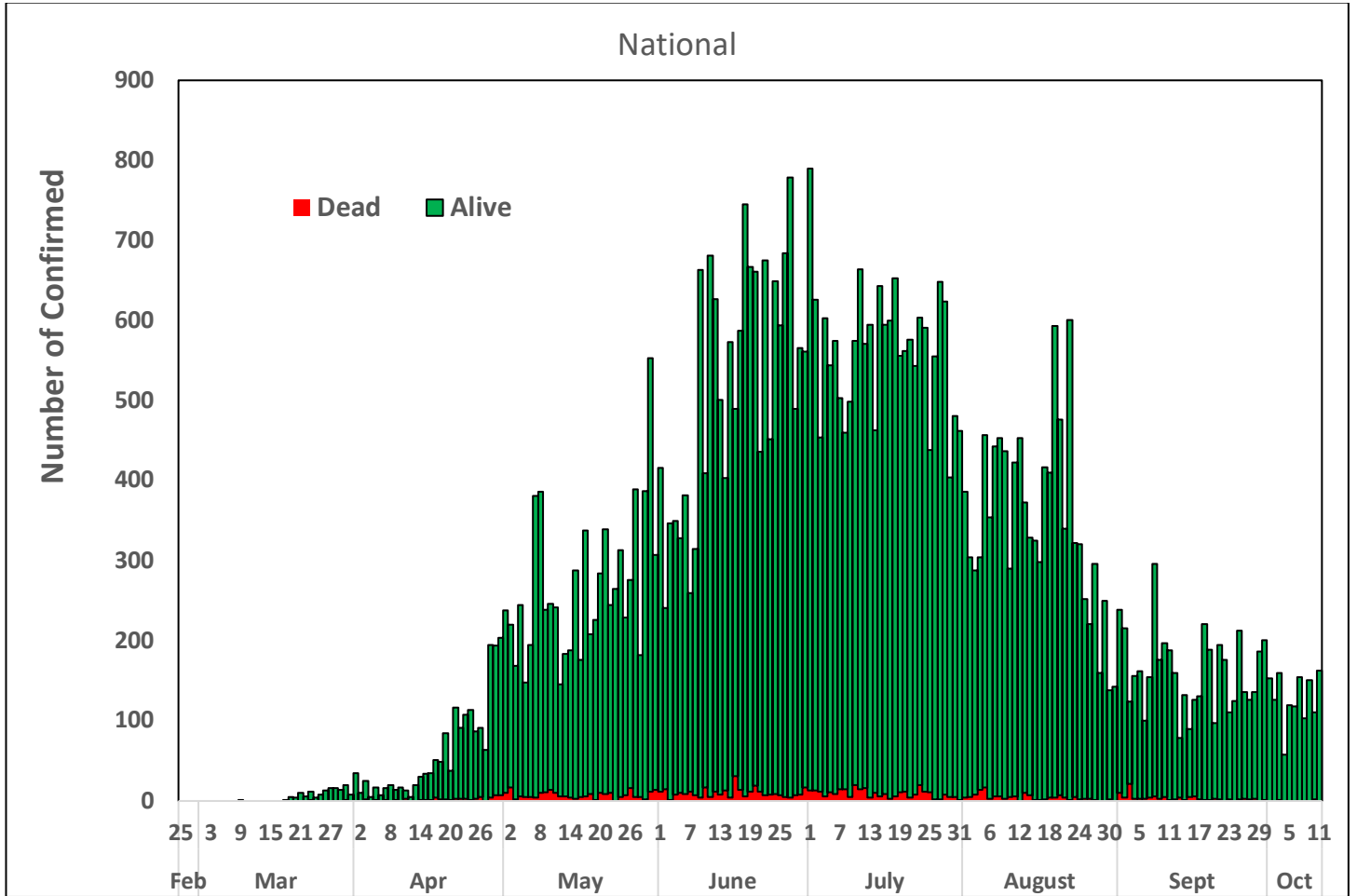
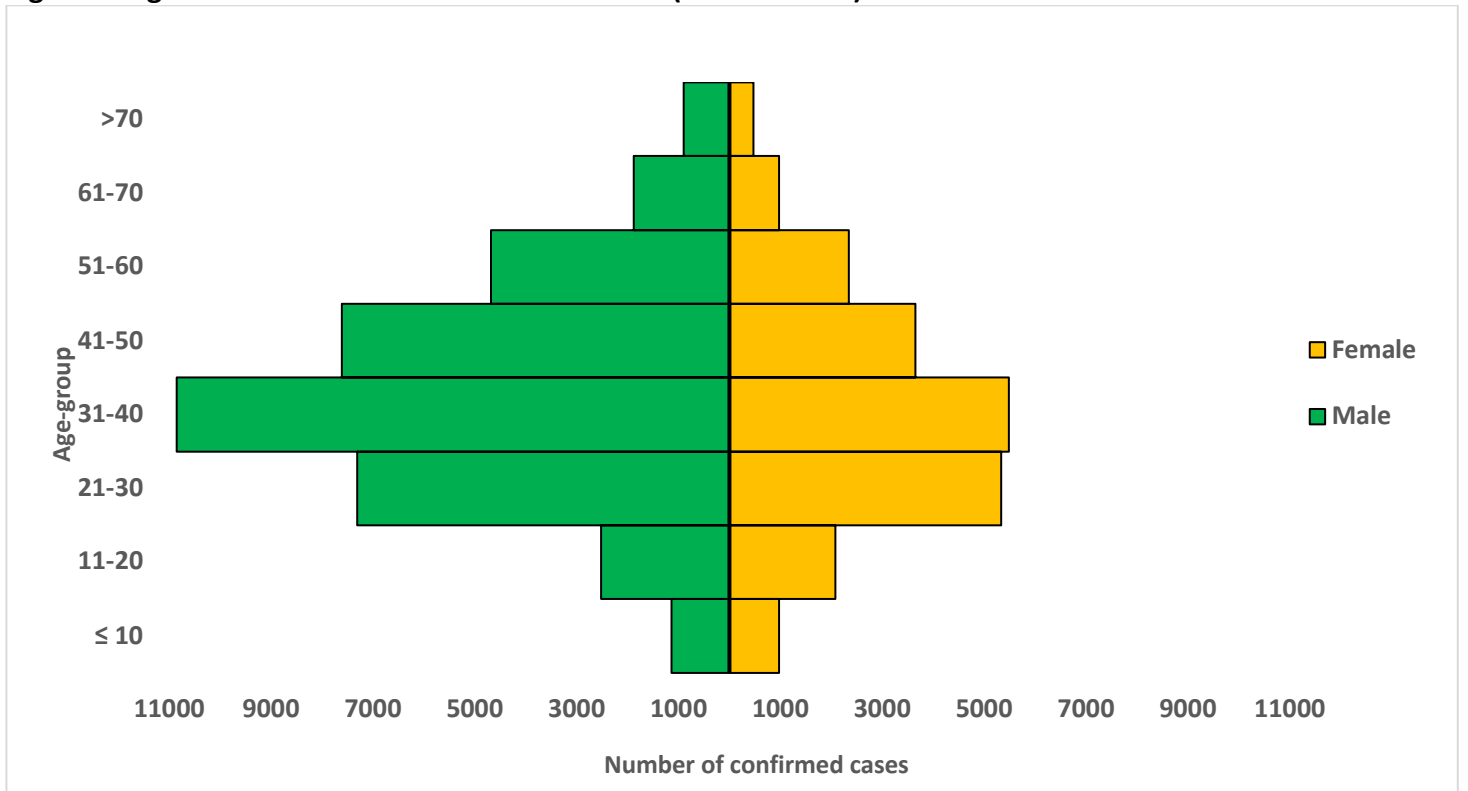


Figure 3: Age-Sex Distribution of Confirmed Cases (WK9 – WK41)



## PREPAREDNESS

Since the confirmation of the first case on 27<sup>th</sup> February 2020, the NCDC has released advisories and statements to help Nigerians and affected groups in particular to respond to the pandemic

- NCDC published second interim guidance – Infection Prevention and Control: [Recommendations during health care provision for suspected and confirmed cases of COVID-19](#)
- NCDC recently published the first edition of a quick reference guide on setting up sample collection centre - [A step by step guide on setting up a sample collection centre](#)
- NCDC has launched an online course on [Infection, Prevention and Control \(IPC\) for COVID-19](#) NCDC eLearning platform
- Ahead of forthcoming elections in the country, NCDC has issued [Guidelines for Conducting Elections During the COVID-19 Outbreak in Nigeria](#).
- To protect our elders, and those with pre-existing medical conditions, NCDC has issued an [Advisory for Vulnerable Groups](#).
- NCDC has released [guidelines on the re-opening of places for worship](#).
- NCDC has released [Strategies to Improve Surveillance for COVID-19 Guidance for States](#)
- The Nigeria Police Force has released COVID-19 operational guidelines for the [Police and other Law Enforcement Agencies in Nigeria](#)
- Guidelines have been issued for the [safe transportation of remains of persons suspected or confirmed to have died of COVID-19](#)
- Information on diagnostics of the COVID-19 virus can be found in our [detailed FAQ document](#).
- To increase our testing capacity, NCDC has issued guidelines for the [integration of private labs](#).
- Guidelines for [businesses and employers](#) have been updated.
- NCDC has updated its [case definition](#) , [community case definition](#) and [case management guide](#).
- NCDC releases periodic [public health advisories](#) to Nigerians on the COVID-19 disease.
- To adhere to post-lockdown measures, NCDC has released an [advisory on the use of face masks](#), as well as information on the [Use of Cloth face masks](#) and [how to make your cloth face masks](#).
- NCDC has released guidelines for the [management of pregnant women and nursing mothers](#) during the pandemic.
- To address burials of loved ones who die from COVID-19, guidelines have been issued to advise on the [management of dead bodies](#).
- For health centres managing cases, the following documents have been released- a guideline for the [Rational Use of Personal Protective Equipment in the care of COVID-19 cases](#).
- As part of plans to increase the testing capacity of the country, the NCDC published a [National Strategy to Scale Up Access to Coronavirus Disease Testing in Nigeria](#) document.
- The Presidential Task Force has published policies and announcements on COVID-19 [available on the website of the Presidency](#) – including presidential addresses, task force updates and information on livelihood and economic support.

## RESPONSE

On 28<sup>th</sup> February 2020, a multi-sectoral Emergency Operations Centre (EOC) was activated at Level 3 – the highest emergency level in Nigeria –led by NCDC in close coordination with the State Public Health EOCs (PHEOC).

- **Supported the accreditation of three (3) new private laboratories for testing COVID-19 in the FCT – Everight, Wuse II; Clina Lancet, Maitama; and E Clinic, Wuse II**
- **Trained Community Health workers on Infection Prevention and Control (IPC) in Niger State**
- **Commenced airing of new jingles in collaboration with Federal Ministry Information**
- Ongoing training of uniformed services personnel focal persons on Infection Prevention and Control (IPC) in the South Eastern Zone
- All education materials can be found via [www.covid19.ncdc.gov.ng](http://www.covid19.ncdc.gov.ng)