

# COVID-19 SITUATION REPORT

## SITUATION REPORT 106

Saturday, 13<sup>th</sup> June 2020



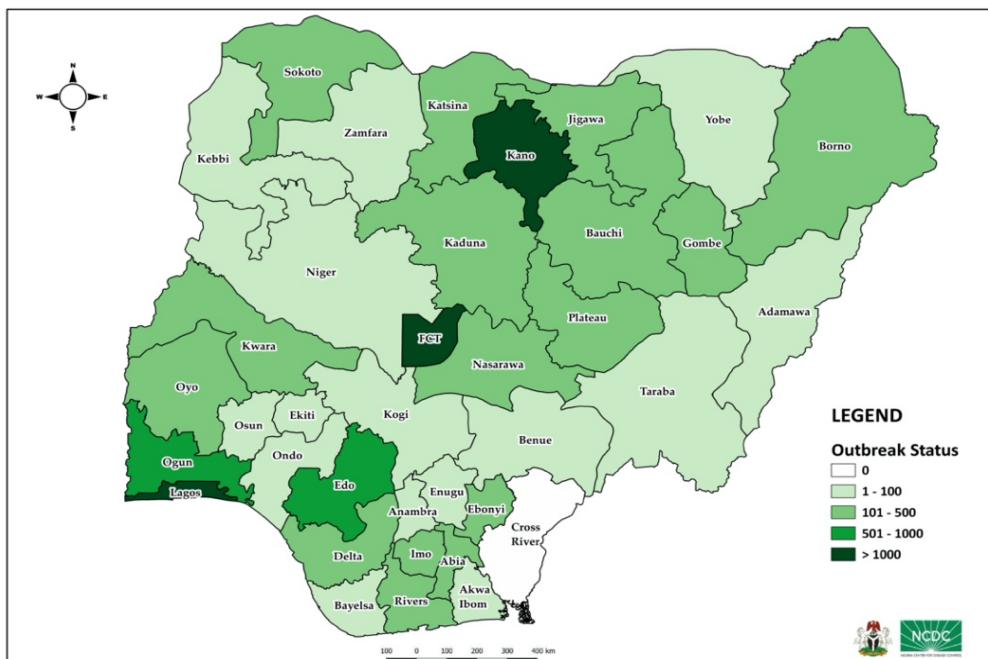
DATA AS REPORTED AND ACCURATE BY NCDC AS AT MIDNIGHT 13<sup>th</sup> JUNE 2020

### HIGHLIGHTS

- Five hundred and one (**501**) confirmed cases were reported in the last 24 hours from twenty-four (**24**) states – Lagos (195), FCT (50), Kano (42), Kaduna (27), Edo (26), Oyo (22), Imo (21), Gombe (17), Benue (12), Enugu (12), Anambra (11), Delta (11), Ebonyi (10), Nasarawa (9), Ogun (9), Bauchi (8), Kebbi (4), Akwa Ibom (3), Jigawa (3), Katsina (3), Borno (2), Yobe (2), Kwara (1) and Ondo (1).
- No new state recorded a confirmed COVID-19 case in the last 24 hours. The total number of states including FCT that have reported at least one confirmed case in Nigeria is still **36** (35 states + FCT).
- Two hundred and ten (**210**) cases were discharged in the last 24 hours in seventeen (**17**) states – FCT (44), Borno (39), Kano (22), Ogun (17), Bauchi (14), Ebonyi (14), Rivers (12), Kwara (10), Kaduna (7), Plateau (7), Benue (5), Edo (5), Enugu (4), Gombe (4), Akwa Ibom (3), Abia (2) and Imo (1).
- Eight (**8**) deaths were recorded in the last 24 hours in five (**5**) states – Borno (3), Imo (2), Bauchi (1), Jigawa (1) and FCT (1).

### STATE OF THE NATION

Figure 1: Map of Nigeria showing 35 states and FCT affected by COVID-19



### SITUATION UPDATES

Total (New in the last 24 hours)

SAMPLES TESTED

**92924 (2460)**

CONFIRMED CASES

**15682 (501)**

AFFECTED STATES INCLUDING FCT

**36 (0)**

DISCHARGED CASES

**5101 (210)**

CONFIRMED FATALITIES

**407 (8) – 3% CFR**

DEMOGRAPHICS

MALE – 10445 (67%)

FEMALE – 5237 (33%)

MOST AFFECTED AGE GROUP

31 - 40 (24%)

PERSONS OF INTEREST

**10150 (Total)**

**10078 (99.3% - Exceeded Follow Up)**

PROVENANCE

TRAVEL HISTORY – 289 (2%)

CONTACTS – 3725 (24%)

UNKNOWN EXPOSURE – 11668 (74%)

GLOBAL UPDATES

TOTAL NUMBER OF CASES

**7,410,510 (418,294 deaths)**

COUNTRIES & TERRITORIES AFFECTED\*

**213**

\*Excluding the 2 International Conveyances

1-Includes backlog

## GENERAL FACT SHEET – DATA AS AT 13<sup>TH</sup> JUNE 2020

Table 1: States with reported laboratory-confirmed COVID-19 cases, recoveries, deaths and days since last reported case

STATES	CONFIRMED CASES		DISCHARGED CASES		DEATHS		TOTAL ACTIVE CASES	DAYS SINCE LAST REPORTED CASE
	CUMULATIVE	NEW	CUMULATIVE	NEW	CUMULATIVE	NEW		
Lagos	7035	195	1137	0	82	0	5816	0
FCT	1212	50	360	44	26	1	826	0
Kano	1091	42	599	22	50	0	442	0
Ogun	553	9	231	17	14	0	308	0
Edo	544	26	133	5	25	0	386	0
Oyo	491	22	216	0	7	0	268	0
Rivers	482	0	208	12	22	0	252	1
Kaduna	429	27	249	7	10	0	170	0
Borno	425	2	270	39	29	3	126	0
Katsina	414	3	219	0	22	0	173	0
Bauchi	410	8	244	14	11	1	155	0
Gombe	337	17	139	4	12	0	186	0
Jigawa	317	3	178	0	6	1	133	0
Delta	254	11	63	0	12	0	179	0
Ebonyi	162	10	84	14	0	0	78	0
Abia	151	0	18	2	0	0	133	1
Kwara	150	1	80	10	1	0	69	0
Plateau	148	0	106	7	3	0	39	1
Nasarawa	141	9	64	0	6	0	71	0
Imo	135	21	20	1	3	2	112	0
Sokoto	132	0	103	0	14	0	15	1
Zamfara	76	0	71	0	5	0	0	26
Anambra	64	11	18	0	9	0	37	0
Ondo	63	1	33	0	9	0	21	0
Yobe	55	2	36	0	7	0	12	0
Kebbi	54	4	29	0	5	0	20	0
Enugu	51	12	18	4	1	0	32	0
Osun	50	0	41	0	4	0	5	4
Niger	49	0	28	0	1	0	20	1
Akwa Ibom	48	3	17	3	2	0	29	0
Adamawa	42	0	34	0	4	0	4	12
Benue	34	12	7	5	0	0	27	0
Bayelsa	32	0	20	0	3	0	9	3
Ekiti	30	0	18	0	2	0	10	4
Taraba	18	0	10	0	0	0	8	24
Kogi	3	0	0	0	0	0	3	10
<b>TOTAL</b>	<b>15682</b>	<b>501</b>	<b>5101</b>	<b>210</b>	<b>407</b>	<b>8</b>	<b>10174</b>	

States including FCT are arranged in descending order by number of total confirmed cases

## SELECTED CHARTS

Figure 2: Daily Epidemic Curve of Confirmed Cases (WK9 – WK24)

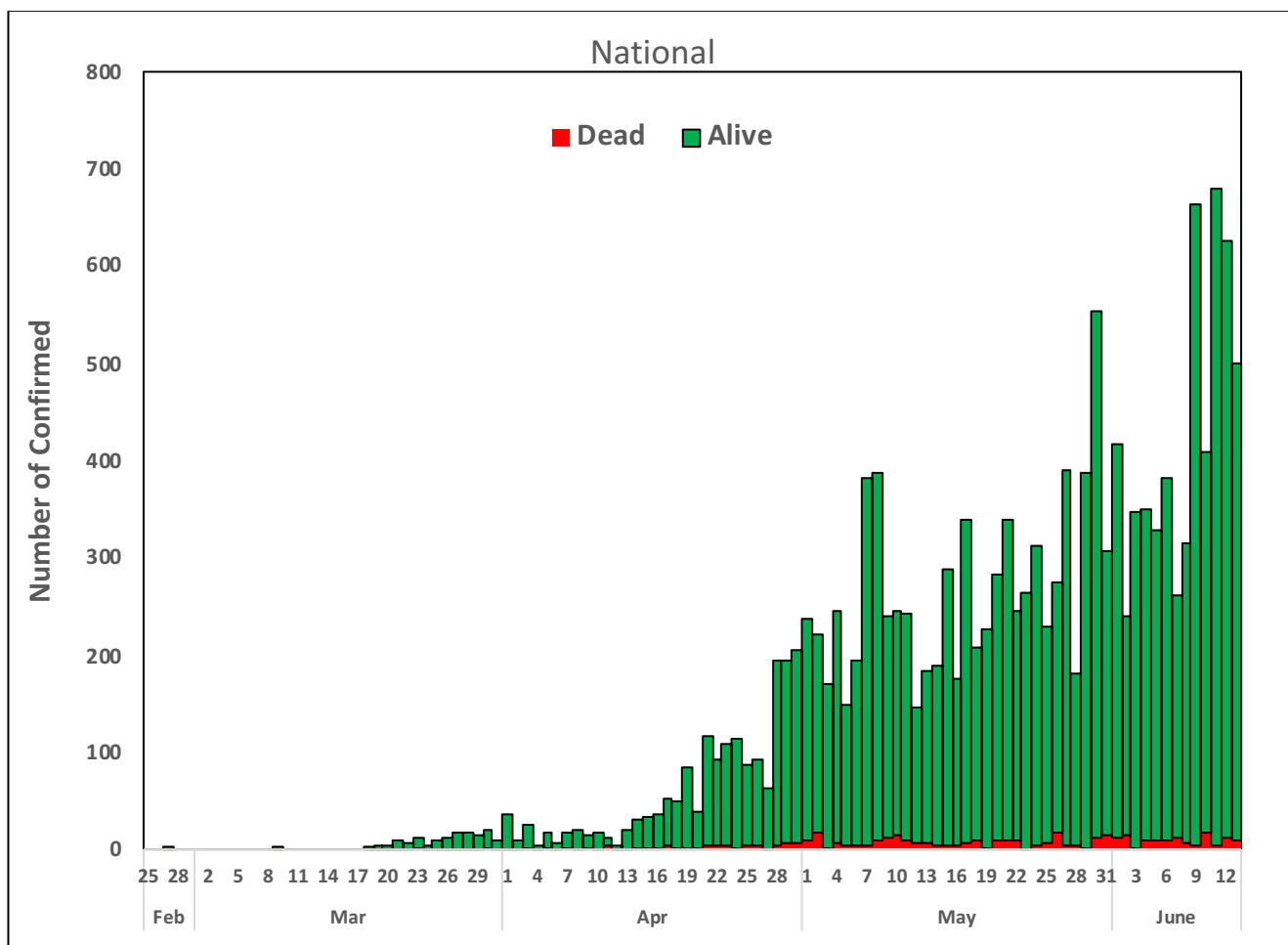
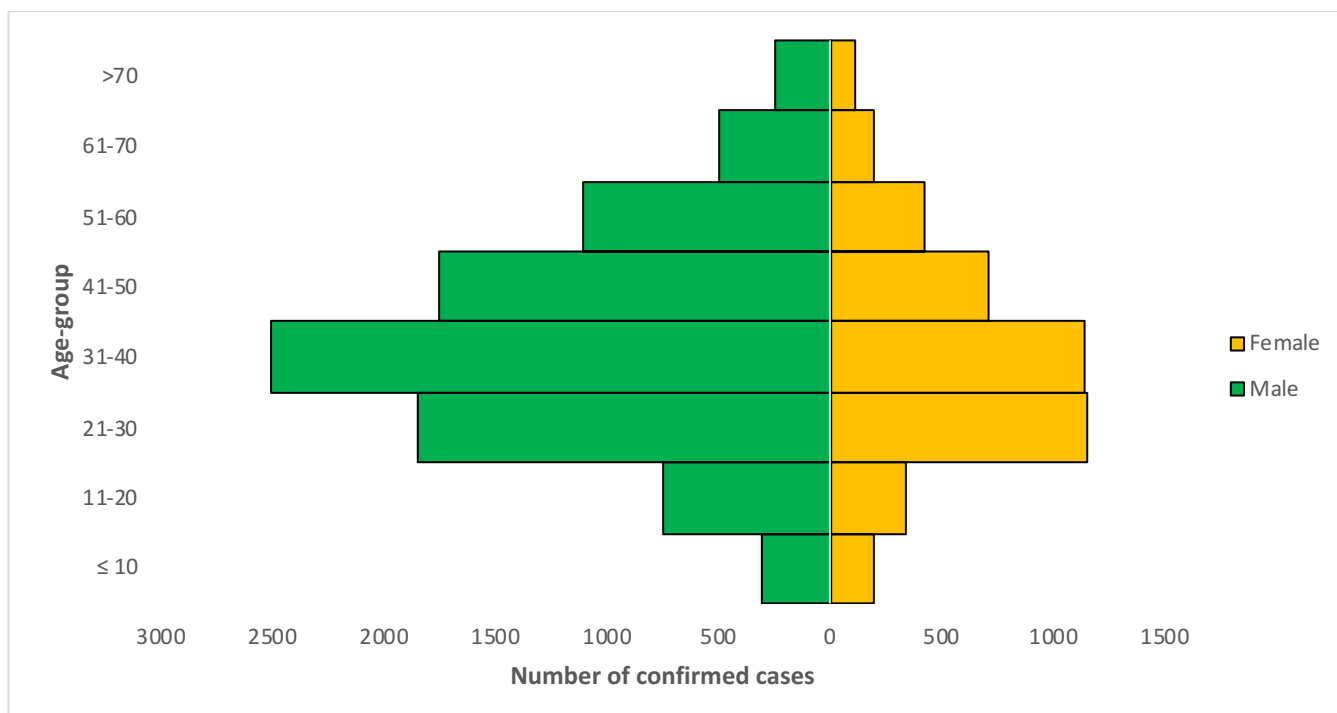


Figure 3: Age-Sex Distribution of Confirmed Cases (WK9 – WK24)



## PREPAREDNESS

Since the confirmation of the first case on 27<sup>th</sup> February 2020, the NCDC has released advisories and statements to help Nigerians and affected groups in particular to respond to the pandemic

- NCDC and the Department of Hospital Services (Federal Ministry of Health) have updated the [case management guidelines](#) (version 3) with reviewed changes such as the discharge criteria and medication being used for the treatment of cases
- Guidelines have been issued for the [safe transportation of remains of persons suspected or confirmed to have died of COVID-19](#)
- Information on diagnostics of the COVID-19 virus can be found in our [detailed FAQ document](#).
- To increase our testing capacity, NCDC has issued guidelines for the [integration of private labs](#).
- Guidelines for [businesses and employers](#) have been updated.
- NCDC has updated its [case definition](#) , [community case definition](#) and [case management guide](#).
- NCDC releases periodic [public health advisories](#) to Nigerians on the COVID-19 disease.
- To adhere to post-lockdown measures, NCDC has released an [advisory on the use of face masks](#), as well as information on the [Use of Cloth face masks](#) and [how to make your cloth face masks](#).
- NCDC has released guidelines for the [management of pregnant women and nursing mothers](#) during the pandemic.
- To address burials of loved ones who die from COVID-19, guidelines have been issued to advise on the [management of dead bodies](#).
- NCDC has released a [Self-Isolation and Quarantine Guide](#) and [Mandatory institutional guideline for returnees to Nigeria](#) to help those who are exposed to COVID-19 confirmed cases or returnees to Nigeria.
- For health centres managing cases, the following documents have been released- a guideline for the [Rational Use of Personal Protective Equipment in the care of COVID-19 cases](#).
- As part of plans to increase the testing capacity of the country, the NCDC published a [National Strategy to Scale Up Access to Coronavirus Disease Testing in Nigeria](#) document.
- The Presidential Task Force has published policies and announcements on COVID-19 [available on the website of the Presidency](#) – including presidential addresses, task force updates and information on livelihood and economic support.

## RESPONSE

On 28<sup>th</sup> February 2020, a multi-sectoral Emergency Operations Centre (EOC) was activated at Level 3 – the highest emergency level in Nigeria –led by NCDC in close coordination with the State Public Health EOCs (PHEOC).

- **Two (2) labs activated E-health and International Foundation Against Infectious Diseases (IFAIN) labs in Kano State**
- **Reviewed State`s Situation Report (SITREP) template to reflect new data requirements for samples collection**
- **A total 384 returnees/Persons of Interest (POIs) were received from Egypt-115 and India- 269 (169 in Abuja and 103 in Lagos)**
- **Shared quarantine guidelines and distributed NCDC care kits to returnees in FCT and Lagos**
- **Trained media reporters and editors on factual, human angle story reporting and on how to improve relationship with Emergency Operations Centre (EOC) and Task Force**
- **Ongoing development of a video on contextual use of Personal Protective Equipment (PPEs) in Treatment Centres**
- **Trained and deployed officers to Lagos and FCT Points Of Entry (POE) to screen and monitor Persons Of Interest (POIs) ahead of the implementation of the new evacuation guideline**
- **Ongoing review of States` Incident Action Plan and offsite support on implementation of prioritised activities**
- **Ongoing IPC training for Primary Health Care workers across the 17 LGAs in Plateau State**
- **57 personnel were trained on sample collection in Katsina**

- Finalised guidelines for schools reopening
- Organised States` stakeholders coordination meeting
- Completed commodity distribution of response supplies to the 36 State Ministries of Health (SMOH) to be used in State treatment centres and Federal Teaching Hospitals/Federal Medical Centres
- All education materials can be found via [www.covid19.ncdc.gov.ng](http://www.covid19.ncdc.gov.ng)