



COVID-19 SITUATION REPORT

WEEKLY EPIDEMIOLOGICAL REPORT 46

Epi Week 34: 23rd – 29th August 2021

DATA AS REPORTED AND ACCURATE BY NCDC AS AT MIDNIGHT 29TH AUGUST 2021



Fig 1. Distribution of cases (Epi Week 34 only)

Fig 2. Distribution of cumulative cases

HIGHLIGHTS

- In Week 34, the number of new confirmed cases decreased to **4,322** from **4,520** reported in week 33. These were reported in **29** states and FCT (Tables 1 & 2).
- In Week 34, the number of discharged cases increased to **9,823** from **1,323** in week 33. These were reported in **22** states and FCT (Tables 1 & 3) (This includes backlogs reported from Lagos).
- There were **186** deaths reported in the last one week (Tables 1 & 4). (This includes backlogs reported from Lagos)
- Cumulatively, since the outbreak began in Week **9**, 2020 there have been **191,345** cases and **2,454** deaths reported with a case fatality rate (CFR) of **1.2%** (Tables 1 & 4).
- In Week 34, the number of in-bound international travellers tested were **4,539** of which **161** were positive compared to **195** (out of **4,590** tested) from week 33.
- In Week 34, the number of out-bound international travellers tested were **7,964** of which **305** were positive compared to **282** (out of **7,507** tested) from week 33.
- Globally, the count for confirmed COVID-19 cases is **216,867,420** with **4,507,837** deaths resulting in a case fatality rate of **2.1%**.

GENERAL FACT SHEET – DATA AS AT 29TH AUGUST 2021

Table 1: States with reported laboratory-confirmed COVID-19 cases, recoveries, deaths, samples tested and active cases.

STATE	CONFIRMED		RECOVERIES		DEATHS		ACTIVE CASES	TESTING	
	Total	Last Week	Total	Last Week	Total	Last Week		Total	Last Week
Abia	1,794	3	1,760	4	24	1	10	30,347	142
Adamawa	1,136	2	1,098	0	32	0	6	25,152	23
Akwa Ibom	3,984	245	3,200	257	42	10	742	34,879	1,676
Anambra	2,046	3	1,968	0	19	0	59	36,769	335
Bauchi	1,553	0	1,534	0	17	0	2	30,536	1
Bayelsa	1,029	44	930	10	26	0	73	22,670	227
Benue	1,413	18	1,389	62	24	0	0	28,628	3,600
Borno	1,344	0	1,305	0	38	0	1	22,275	2
Cross River	475	5	442	20	21	0	12	12,612	104
Delta	2,914	112 ^a	2,556	0	75	0	283	51,473	1,514
Ebonyi	2,048	1	2,003	0	32	0	13	32,172	23
Edo	5,341	228	4,891	99	195	6	255	76,814	530
Ekiti	1,447	167	1,119	117	15	0	313	34,492	1,237
Enugu	2,556	16	2,527	26	29	0	0	46,023	287
FCT	20,534	168	19,936	62	175	1	423	369,312	9,871
Gombe	2,239	4	2,191	34	44	0	4	70,224	1,547
Imo	1,710	11	1,650	5	38	0	22	55,718	448
Jigawa	562	0	521	0	16	0	25	15,644	138
Kaduna	9,225	22	9,132	9	66	0	27	143,413	417
Kano	4,044	8	3,921	3	110	0	13	118,875	784
Katsina	2,164	0	2,100	0	35	0	29	47,129	106
Kebbi	458	8	433	41	16	0	9	20,645	87
Kogi	5	0	3	0	2	0	0	7,328	4
Kwara	3,556	121	3,112	44	57	0	387	32,864	391
Lagos	72,445	1,805	66,561	8,000 ^b	604	133 ^b	5,280	721,485	19,457
Nasarawa	2,414	1	2,345	0	39	0	30	30,295	49
Niger	966	2	914	0	20	0	32	21,640	254
Ogun	5,244	63	5,001	195	76	3	167	89,314	1,118
Ondo	3,968	158	3,575	52	71	1	322	32,274	750

STATE	CONFIRMED		RECOVERIES		DEATHS		ACTIVE CASES	TESTING	
	Total	Last Week	Total	Last Week	Total	Last Week		Total	Last Week
Osun	2,691	24	2,573	0	79	7	39	24,846	413
Oyo	8,082	306	7,247	118	162	7	673	87,244	2,139
Plateau	9,179	44	9,058	0	59	2	62	75,467	221
Rivers	10,169	728	8,773	648	127	15	1,269	272,649	8,096
Sokoto	796	2	766	4	28	0	2	27,280	160
Taraba	1,062	3	1,011	6	24	0	27	16,099	12
Yobe	501	0	490	0	9	0	2	26,616	-
Zamfara	251	0	243	7	8	0	0	14,939	-
Total	191,345	4,322	178,278	9,823	2,454	186	10,613	2,806,142	56,163

NB: ^a Confirmed cases reported for Delta include backlog of 15 cases on 26th (2), 27th (4), and 28th (9) August 2021

^b Discharged cases and deaths reported for Lagos include backlog from 4th August 2021

Test type disaggregation (last one week)

Type	Number of tests done	Percentage of tests done
PCR	48,841	87.0%
RDT	7,322	13.0%
TOTAL	56,163	

Test type disaggregation (cumulative)

Type	Number of tests done	Percentage of tests done
PCR	2,411,238	85.9%
RDT	394,904	14.1%
TOTAL	2,806,142	

RETURNING PASSENGERS TESTS

Laboratories and COVID-19 tests for returning Persons of Interest

LABORATORY	INBOUND
54Gene Abuja (FCT)	353
ACCOUNS (Lagos)	191
Afriglobal (Lagos)	156
Arab Labs (FCT)	22
Arrive Alive (Lagos)	118
BIOLOGIX (Lagos)	118
Biosensors Medical Diagnostics (Fct)	32
Cedarcrest Abuja (FCT)	72
CLINA-LANCET Laboratories (Lagos)	418
CLINA-LANCET Laboratories Abuja (FCT)	50
Clinix Healthcare (Lagos)	87
CoolSpring (Lagos)	29
DemyHealth (Lagos)	32
Dexmian medical laboratory (FCT)	14
DNA labs Abuja (FCT)	236
E-clinic & Diagnostics (FCT)	90
Edo Specialist Hospital (Edo)	75
EHA Clinics (FCT)	156
Evercare (Lagos)	17
Everight diagnostics (Abuja) (FCT)	86
Everight diagnostics (Imo)	250
Genequest (Lagos)	16
Genequest Diagnostics (Lagos)	6
Grandville (Lagos)	9
Harley And Rainbow (Lagos)	26
Ibom Molecular Laboratory (Akwa Ibom)	22
IFAIN (FCT)	37
LASUCOM (Lagos)	3
Lifebridge (Lagos)	10
Me Cure (Lagos)	98
Medbury (Lagos)	336
Medbury Medical Services (Rivers)	232
Medicaid Abuja (FCT)	235
MEDILAG (Lagos)	3
NIZAMIYE (FCT)	66

Laboratories without reports on number of samples tested this week.

AKTH (Kano)	JUTH GX (Plateau)
UNIOSUN (Osun)	GH Takum (Taraba)
OOUTH (Ogun)	Kaduna Mobile Truck GX (Kaduna)
IFAIN (Kano)	GH Saminaka (Kaduna)
SSH (Kogi)	O2 (Lagos)
IFAIN (Kano)	FMC Bida (Niger)
PLASVREC (Plateau)	NVRI (Plateau)
BUK (Kano)	ABU, (Kaduna)
BML, (Bauchi)	NASIDARC (Nasarawa)
Everight (Imo)	MOGID, (Bauchi)
ZANKLI GX lab, (Nasarawa)	FMC Owo, (Ondo)
YSSH, (Yobe)	FMC Birnin Kebbi, (Kebbi)
UCTH (Cross River)	PHL (Ondo)
UPH (Rivers)	UNTH (Enugu)
ISTH (Edo)	Landmark (Anambra)
FMC Owo (Ondo)	161 NAF Centre
USUMH (Borno)	UMTH (Borno)
PLASVIREC (Plateau)	Warri Lab (Delta)
GH Kagarko (Kaduna)	FTH (Gombe)

Synlab (Lagos)	289
The Specialist Lab (Lagos)	11
Tobis Mdl (Bayelsa)	4
Total (Lagos)	43
Union Diagnostics (Lagos)	1
Vcare (Lagos)	151
Wellmed (Lagos)	15
Westend Hospital Molecular Laboratory (Delta)	76
Zaine Lab (Lagos)	155
Life Center (Lagos)	93
Grand Total	4,539

DAILY CONFIRMED CASES – DATA AS AT 29TH AUGUST 2021

Table 2: States with reported laboratory-confirmed COVID-19 cases daily over the last week

CONFIRMED CASES	WEEK 34	23 rd August	24 th August	25 th August	26 th August	27 th August	28 th August	29 th August
	TOTAL	Monday	Tuesday	Wednesday	Thursday	Friday	Saturday	Sunday
Abia	3	0	0	0	1	0	2	0
Adamawa	2	2	0	0	0	0	0	0
Akwa Ibom	245	0	31	31	11	89	59	24
Anambra	3	0	0	0	0	0	0	3
Bauchi	0	0	0	0	0	0	0	0
Bayelsa	44	6	11	2	10	0	14	1
Benue	18	12	0	1	2	3	0	0
Borno	0	0	0	0	0	0	0	0
Cross River	5	0	0	5	0	0	0	0
Delta	112 ^a	24	0	34	6	19	29	0
Ebonyi	1	0	0	0	1	0	0	0
Edo	228	20	17	54	45	71	18	3
Ekiti	167	37	21	17	35	20	22	15
Enugu	16	0	0	1	0	0	15	0
FCT	168	53	28	29	37	11	5	5
Gombe	4	0	0	0	0	1	3	0
Imo	11	0	0	0	11	0	0	0
Jigawa	0	0	0	0	0	0	0	0
Kaduna	22	0	7	2	3	1	8	1
Kano	8	0	0	1	0	0	6	1
Katsina	0	0	0	0	0	0	0	0
Kebbi	8	0	0	8	0	0	0	0
Kogi	0	0	0	0	0	0	0	0
Kwara	121	6	0	30	42	13	0	30
Lagos	1,805	205	288	322	217	312	261	200
Nasarawa	1	0	0	0	1	0	0	0
Niger	2	0	0	0	2	0	0	0
Ogun	63	5	0	14	13	3	11	17
Ondo	158	63	0	0	0	0	95	0

CONFIRMED CASES	WEEK 34	23 rd August	24 th August	25 th August	26 th August	27 th August	28 th August	29 th August
	TOTAL	Monday	Tuesday	Wednesday	Thursday	Friday	Saturday	Sunday
Osun	24	6	0	10	0	8	0	0
Oyo	306	53	64	0	128	4	24	33
Plateau	44	0	0	3	7	20	7	7
Rivers	728	73	188	70	263	47	80	7
Sokoto	2	0	0	0	2	0	0	0
Taraba	3	0	0	3	0	0	0	0
Yobe	0	0	0	0	0	0	0	0
Zamfara	0	0	0	0	0	0	0	0
Total	4,322	565	655	637	837	622	659	347

NB:

^a Confirmed cases reported for Delta include backlog of 15 cases on 26th (2), 27th (4), and 28th (9) August 2021

DAILY RECOVERIES – DATA AS AT 29TH AUGUST 2021

Table 3: States with reported case management confirmed COVID-19 recoveries daily over the last week.

CONFIRMED RECOVERIES	WEEK 34	23 rd August	24 th August	25 th August	26 th August	27 th August	28 th August	29 th August
	TOTAL	Monday	Tuesday	Wednesday	Thursday	Friday	Saturday	Sunday
Abia	4	0	0	0	4	0	0	0
Adamawa	0	0	0	0	0	0	0	0
Akwa Ibom	257	0	60	45	60	0	52	40
Anambra	0	0	0	0	0	0	0	0
Bauchi	0	0	0	0	0	0	0	0
Bayelsa	10	0	0	8	2	0	0	0
Benue	62	0	0	62	0	0	0	0
Borno	0	0	0	0	0	0	0	0
Cross River	20	12	0	8	0	0	0	0
Delta	0	0	0	0	0	0	0	0
Ebonyi	0	0	0	0	0	0	0	0
Edo	99	24	4	5	10	0	0	56
Ekiti	117	71	0	4	12	10	0	20
Enugu	26	0	0	20	0	0	6	0
FCT	62	0	46	2	10	0	2	2
Gombe	34	0	0	0	0	34	0	0
Imo	5	0	0	0	5	0	0	0
Jigawa	0	0	0	0	0	0	0	0
Kaduna	9	0	1	4	1	1	2	0
Kano	3	0	0	2	0	0	1	0
Katsina	0	0	0	0	0	0	0	0
Kebbi	41	0	0	41	0	0	0	0
Kogi	0	0	0	0	0	0	0	0
Kwara	44	44	0	0	0	0	0	0
Lagos	8,000 ^a	0	0	0	0	0	8,000	0
Nasarawa	0	0	0	0	0	0	0	0
Niger	0	0	0	0	0	0	0	0
Ogun	195	85	0	56	18	17	5	14
Ondo	52	0	0	0	0	0	52	0

CONFIRMED RECOVERIES	WEEK 34	23 rd August	24 th August	25 th August	26 th August	27 th August	28 th August	29 th August
	TOTAL	Monday	Tuesday	Wednesday	Thursday	Friday	Saturday	Sunday
Osun	0	0	0	0	0	0	0	0
Oyo	118	34	10	10	6	0	21	37
Plateau	0	0	0	0	0	0	0	0
Rivers	648	93	96	66	114	127	87	65
Sokoto	4	0	0	0	2	0	0	2
Taraba	6	0	0	6	0	0	0	0
Yobe	0	0	0	0	0	0	0	0
Zamfara	7	0	0	7	0	0	0	0
Total	9,823	363	217	346	244	189	8,228	236

NB: ^a Discharged cases reported for Lagos include backlog from 4th August 2021

DAILY FATALITIES – DATA AS AT 29TH AUGUST 2021

Table 4: States with reported COVID-19 fatalities daily over the last week

CONFIRMED FATALITIES	WEEK 34	23 rd August	24 th August	25 th August	26 th August	27 th August	28 th August	29 th August
	TOTAL	Monday	Tuesday	Wednesday	Thursday	Friday	Saturday	Sunday
Abia	1	0	0	0	1	0	0	0
Adamawa	0	0	0	0	0	0	0	0
Akwa Ibom	10	0	0	0	0	0	0	10
Anambra	0	0	0	0	0	0	0	0
Bauchi	0	0	0	0	0	0	0	0
Bayelsa	0	0	0	0	0	0	0	0
Benue	0	0	0	0	0	0	0	0
Borno	0	0	0	0	0	0	0	0
Cross River	0	0	0	0	0	0	0	0
Delta	0	0	0	0	0	0	0	0
Ebonyi	0	0	0	0	0	0	0	0
Edo	6	1	0	0	3	0	0	2
Ekiti	0	0	0	0	0	0	0	0
Enugu	0	0	0	0	0	0	0	0
FCT	1	0	0	0	1	0	0	0
Gombe	0	0	0	0	0	0	0	0
Imo	0	0	0	0	0	0	0	0
Jigawa	0	0	0	0	0	0	0	0
Kaduna	0	0	0	0	0	0	0	0
Kano	0	0	0	0	0	0	0	0
Katsina	0	0	0	0	0	0	0	0
Kebbi	0	0	0	0	0	0	0	0
Kogi	0	0	0	0	0	0	0	0
Kwara	0	0	0	0	0	0	0	0
Lagos	133 ^a	0	0	0	0	4	50	79
Nasarawa	0	0	0	0	0	0	0	0
Niger	0	0	0	0	0	0	0	0
Ogun	3	1	0	0	0	1	0	1
Ondo	1	0	0	0	0	0	1	0

CONFIRMED FATALITIES	WEEK 34	23 rd August	24 th August	25 th August	26 th August	27 th August	28 th August	29 th August
	TOTAL	Monday	Tuesday	Wednesday	Thursday	Friday	Saturday	Sunday
Osun	7	0	0	4	0	3	0	0
Oyo	7	0	3	0	2	1	0	1
Plateau	2	1	0	1	0	0	0	0
Rivers	15	5	2	2	3	1	2	0
Sokoto	0	0	0	0	0	0	0	0
Taraba	0	0	0	0	0	0	0	0
Yobe	0	0	0	0	0	0	0	0
Zamfara	0	0	0	0	0	0	0	0
Total	186	8	5	7	10	10	53	93

NB: ^b Deaths reported for Lagos include backlog from 4th August 2021

DAILY EPICURVE

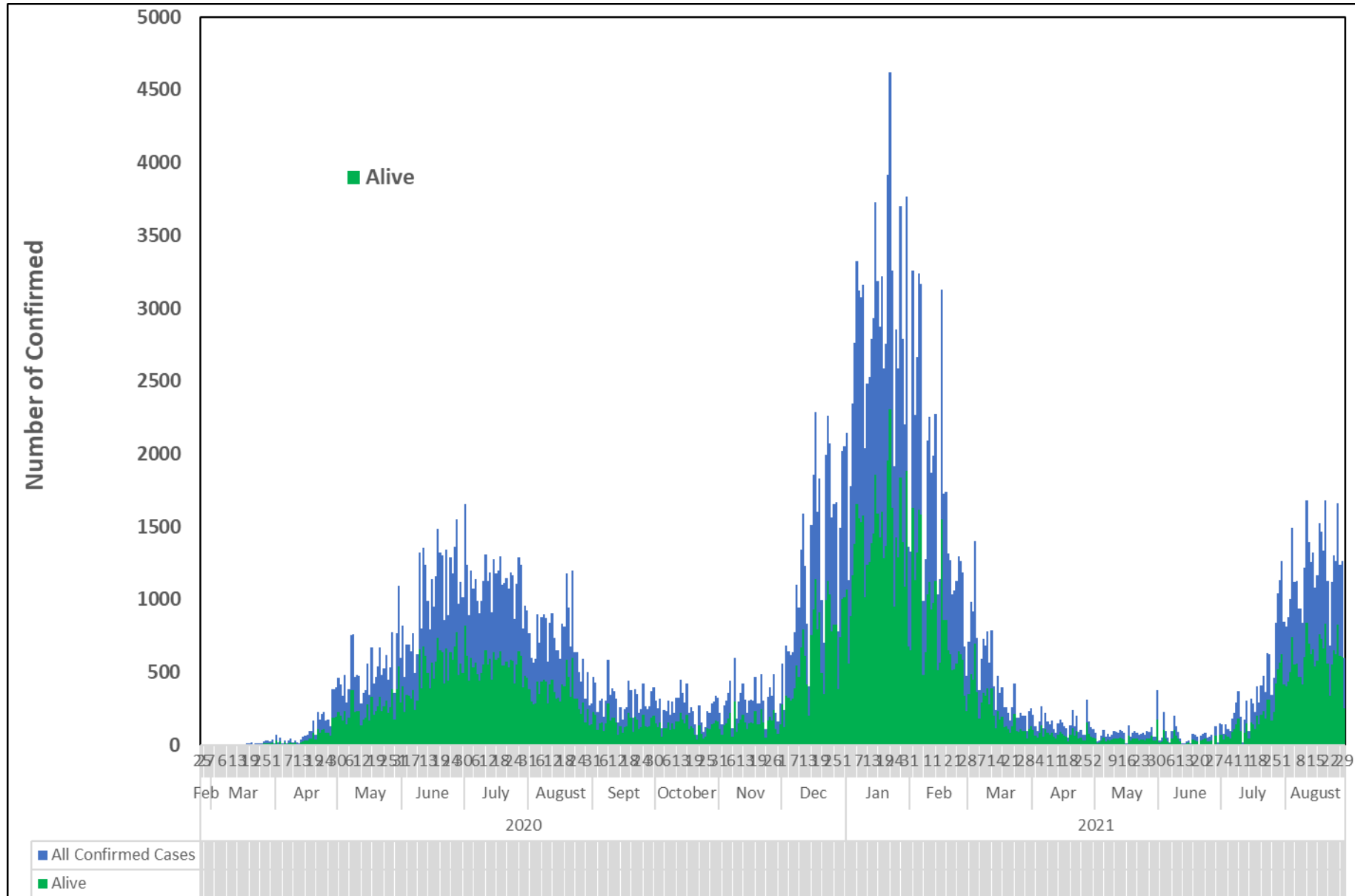


Figure 3: Daily epidemic curve of confirmed cases as reported per day as of 29th August 2021

WEEKLY EPICURVE

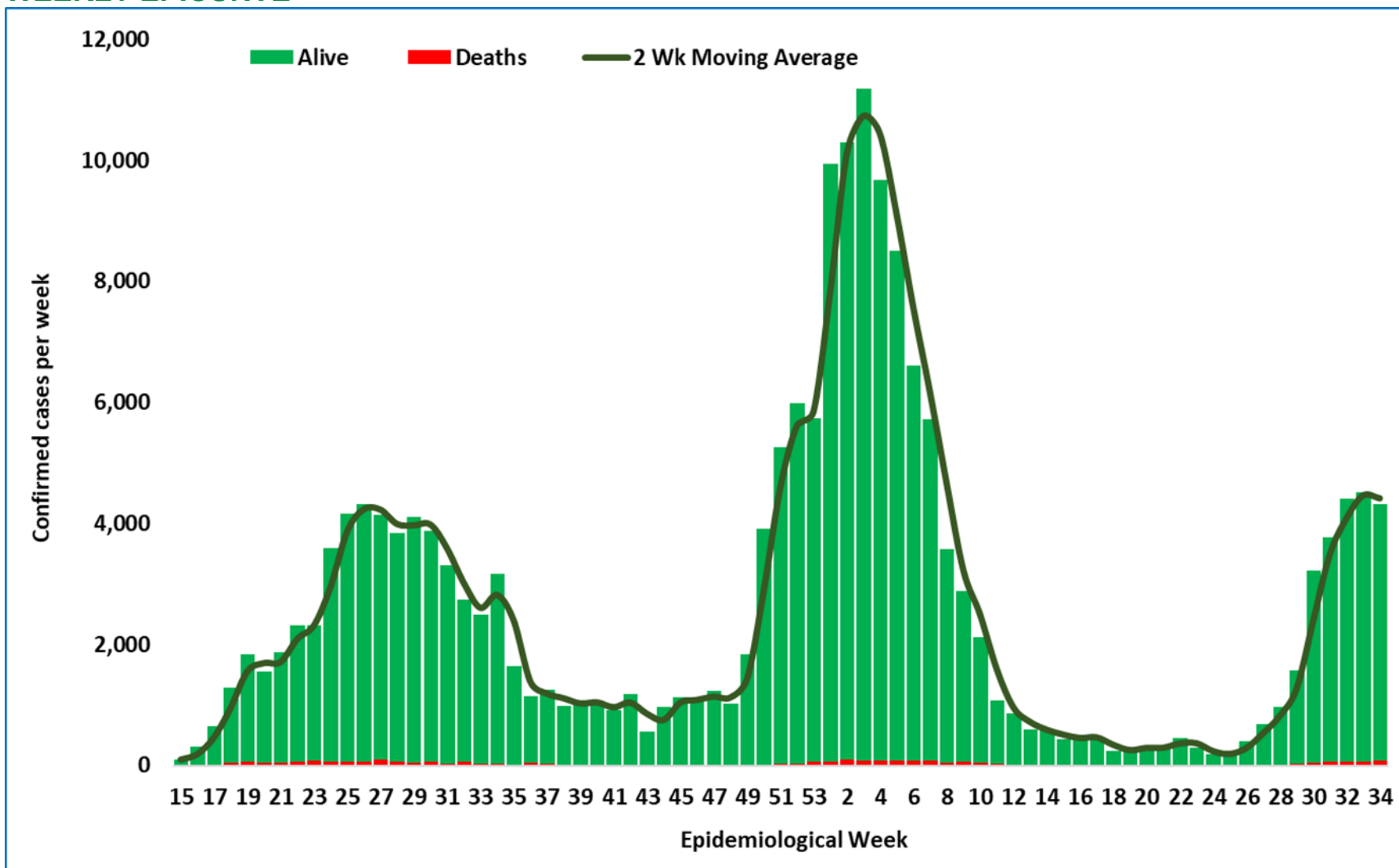


Figure 4: Weekly epidemic curve of confirmed cases (WK13, 2020 – WK34, 2021) as reported per week

WEEKLY EPICURVE WITH TESTS AND TEST POSITIVITY RATIO (TPR)

Trends in COVID-19 Weekly Tests and Weekly TPR (%) (2 wk moving avg) from week 17, 2020 to week 34, 2021

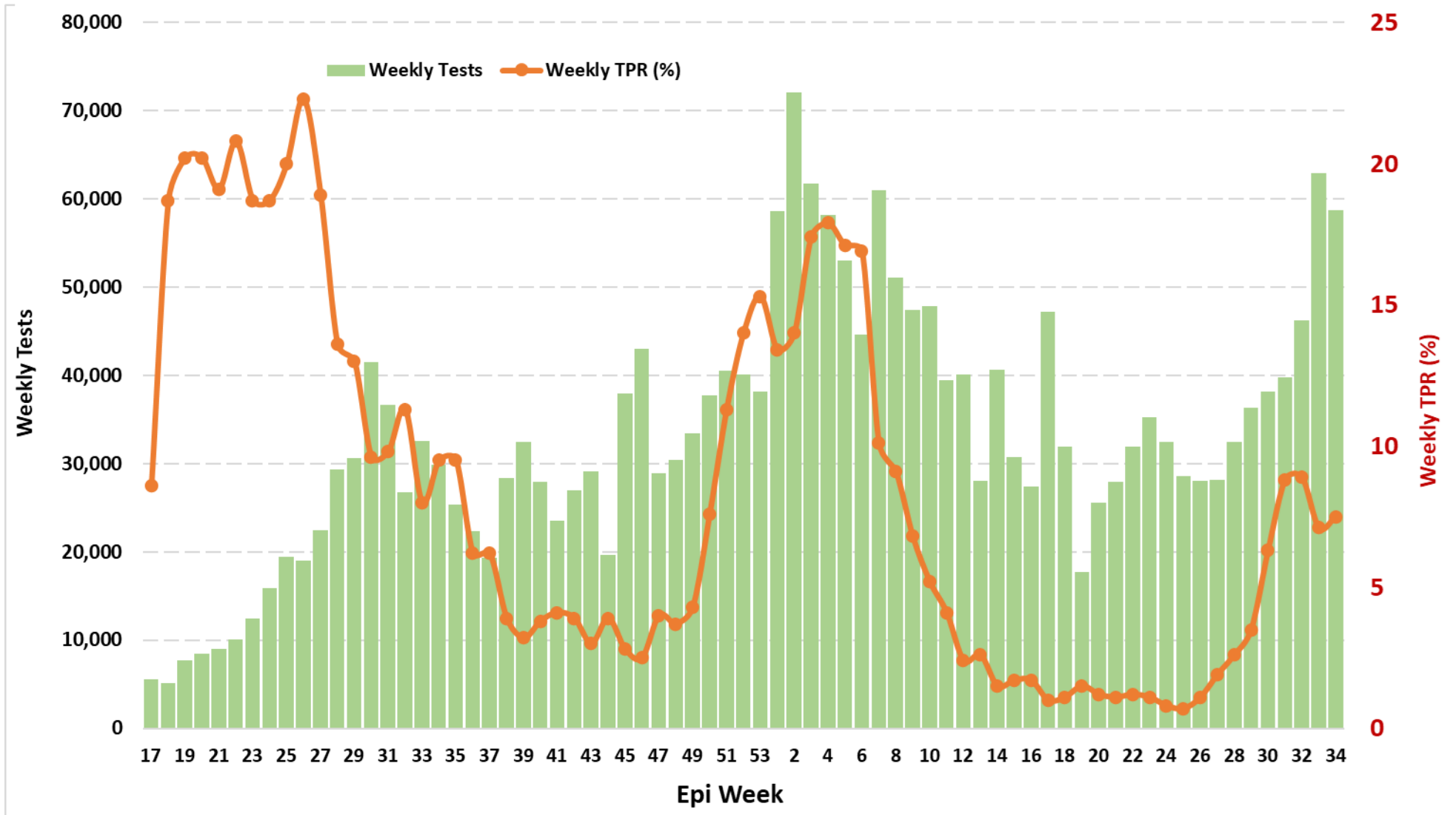


Figure 5: Trends in Weekly TPR (%) (2 weeks moving average) (WK17, 2020 – WK34, 2021). This is based on PCR results only

SELECTED CHARTS: FATALITY TRENDS CASE FATALITY RATIO

Trends in COVID-19 Weekly Cases and Weekly CFR (%) from week 17, 2020 to week 34, 2021

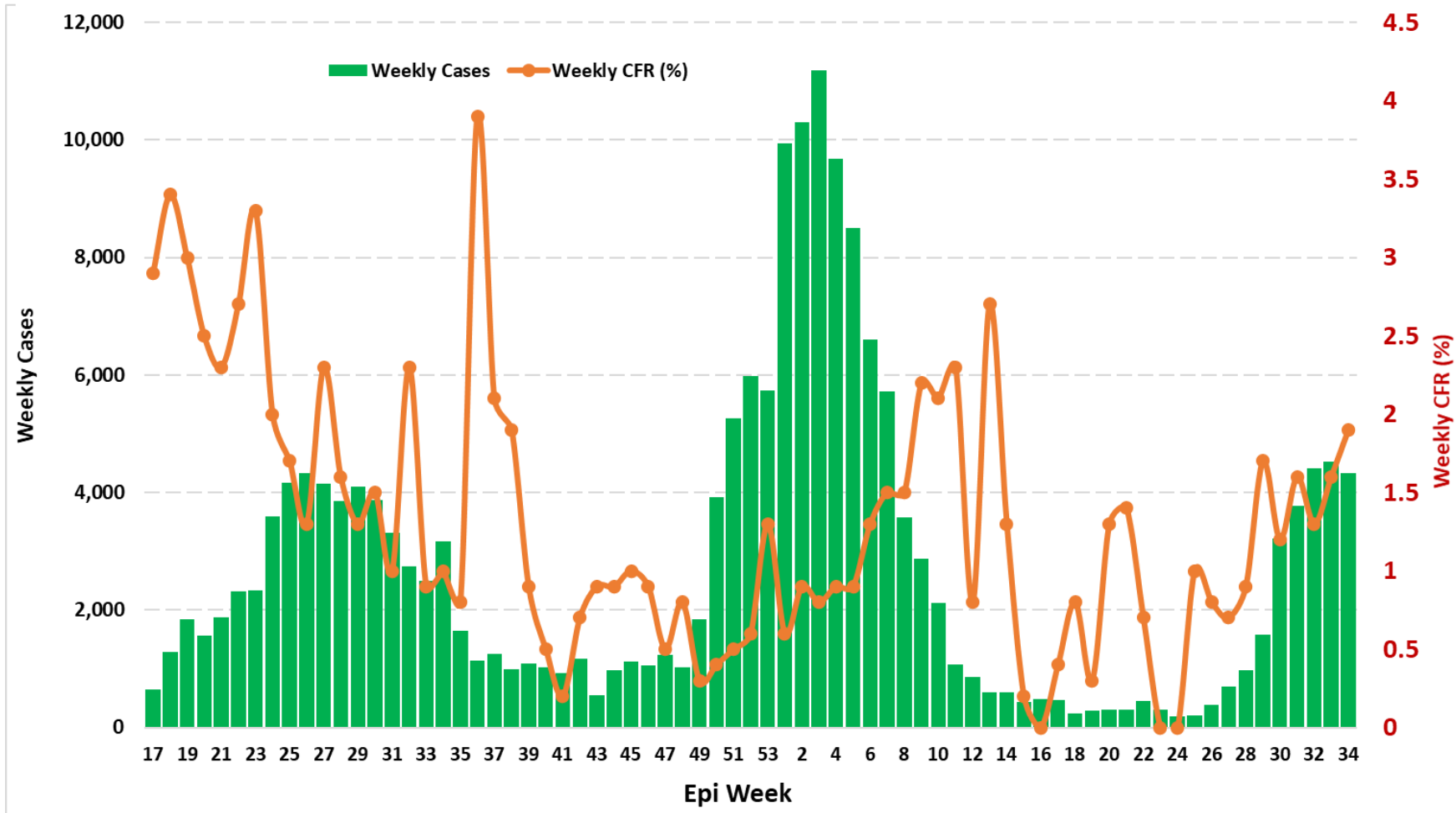


Figure 6: Trends in weekly case fatality ratio (2 weeks moving average) (WK17, 2020 – WK34 2021)

AGE-GENDER BREAKDOWN

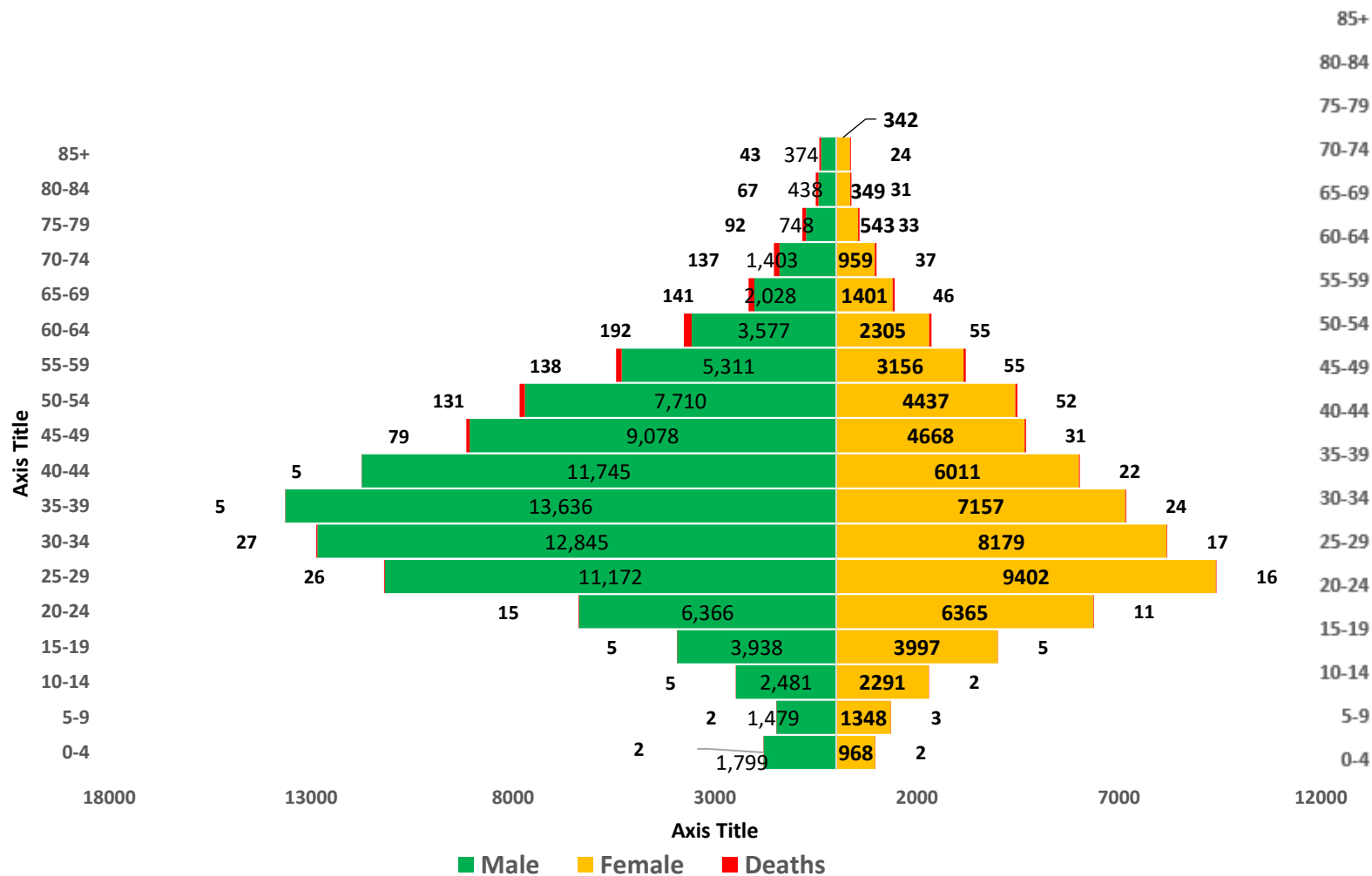


Figure 7: Chart with age and gender breakdown of cases and deaths (WK10, 2020 – WK34, 2021)

RESPONSE COMMODITIES DISTRIBUTION

Table 5: Prepositioning of IPC commodities to states and tertiary treatment facilities for week 34

S/N	Item Description	U.o.M	Lagos State Ministry of Health	Federal Medical Center, Ebutte Meta	Lagos University Teaching Hospital (LUTH)	Delta State Ministry of Health	Federal Medical Center, Asaba	Edo State Ministry of Health	University of Benin Teaching Hospital, Benin	Irrua Specialist Teaching Hospital	Rivers State Ministry of Health
1	Gown	Piece	1,000	1,300	1,200	550	600	550	600	600	900
2	N95/KN95 Face Masks	Piece	1,740	2,500	2,500	900	800	1,400	1,000	1,000	1,200
3	Face Shield	Piece	300	1000	1000	300	400	300	600	600	400
4	Surgical Face Mask	Piece	3,500	4,000	4,000	2,500	2,000	2,500	2,000	2,000	2,500
5	Goggles	Piece	500	1,000	1,000	200	300	200	500	500	300
6	Bio-Hazard Bag	Piece	1,100	1,000	1,000	400	400	500	600	600	600
7	Digital Thermometer	Piece	200	0	0	50	0	50	0	0	100
8	Sharps Container (Plastic)	Piece	50	100	100	50	50	50	50	50	50
9	Hand Sanitizer 100ml	Piece	140	200	200	70	100	70	100	100	95
10	Hand Sanitizer 500ml	Piece	50	0	0	10	0	10	0	0	20
11	Shoe Cover	Pair	250	250	250	150	120	150	120	120	150
12	Dexamethasone tablets	Pack	100	100	100	65	65	65	65	65	65
13	Scrubs set (Reusable)	Piece	400	1,000	1,000	200	500	200	500	500	200
14	Coverall PPE	Piece	0	0	0	0	0	50	59	59	50
15	Chlorine solution	Piece	0	0	0	0	0	172	150	150	172
16	Examination Gloves	Pack	0	0	0	0	0	268	230	230	268

Table 6: Prepositioning of IPC commodities to states and tertiary treatment facilities for week 34

S/N	Item Description	U.o.M	University of Portharcourt Teaching Hospital	Kwara State Ministry of Health	University of Ilorin Teaching Hospital	Ogun State Ministry of Health	Federal Medical Center, Abeokuta	Akwa Ibom State Ministry of Health	University of Uyo Teaching Hospital	Taraba State Ministry of Health
1	Gown	Piece	800	850	600	1,000	700	1,000	800	550
2	N95/KN95 Face Masks	Piece	1,200	900	800	900	1,000	1,200	1,200	900
3	Face Shield	Piece	600	300	400	300	400	400	600	300
4	Surgical Face Mask	Piece	2,000	2,500	2,000	2,500	2,000	2,500	2,000	2,500
5	Goggles	Piece	500	200	300	300	400	200	300	200
6	Bio-Hazard Bag	Piece	700	600	600	500	500	700	700	400
7	Digital Thermometer	Piece	0	50	0	50	0	100	0	50
8	Sharps Container (Plastic)	Piece	50	50	50	50	50	50	50	50
9	Hand Sanitizer 100ml	Piece	150	70	100	115	150	70	100	70
10	Hand Sanitizer 500ml	Piece	0	10	0	10	0	10	0	10
11	Shoe Cover	Pair	120	150	120	150	120	150	120	150
12	Dexamethasone tablets	Pack	65	65	65	65	65	65	65	65
13	Scrubs set (Reusable)	Piece	500	200	500	200	500	200	500	200
14	Coverall PPE	Piece	59	50	59	50	59	0	0	50
15	Chlorine solution	Piece	100	222	150	272	100	0	0	172
16	Examination Gloves	Pack	300	268	300	268	300	0	0	268

Table 7: Prepositioning of IPC commodities to states and tertiary treatment facilities for week 34

S/N	Item Description	U.o.M	Enugu State Ministry of Health	University of Nigeria Teaching, Nsukka	Imo State Ministry of Health	Federal Medical Center, Owerri	Ekiti State Ministry of Health	Federal Medical Center, Ido Ekiti	Kaduna State Ministry of Health	Ahmadu Bello University Teaching Hospital, Zaria
1	Gown	Piece	650	650	550	600	550	600	650	700
2	N95/KN95 Face Masks	Piece	900	800	900	800	900	800	1,200	1,500
3	Face Shield	Piece	400	600	300	400	300	400	500	600
4	Surgical Face Mask	Piece	2,500	2,000	2,500	2,000	2,500	2,000	2,500	2,000
5	Goggles	Piece	300	500	300	500	200	300	300	500
6	Bio-Hazard Bag	Piece	500	600	400	400	600	700	600	700
7	Digital Thermometer	Piece	100	0	50	0	50	0	100	0
8	Sharps Container (Plastic)	Piece	50	50	50	50	50	50	50	50
9	Hand Sanitizer 100ml	Piece	140	200	70	100	70	100	120	200
10	Hand Sanitizer 500ml	Piece	20	0	10	0	10	0	20	0
11	Shoe Cover	Pair	150	120	150	120	150	120	150	120
12	Dexamethasone tablets	Pack	65	65	65	65	65	65	65	65
13	Scrubs set (Reusable)	Piece	200	500	200	500	200	500	200	500
14	Coverall PPE	Piece	50	59	50	59	50	59	50	59
15	Chlorine solution	Piece	222	150	172	100	400	200	172	100
16	Examination Gloves	Pack	268	230	268	230	268	300	268	300

Table 8: Prepositioning of IPC commodities to states and tertiary treatment facilities for week 34

S/N	Item Description	U.o.M	Federal Medical Center, Katsina	Sokoto State Ministry of Health	Usman Dan Fodio University Teaching Hospital, Sokoto	Zamfara State Ministry of Health	Federal Medical Center, Gusau	Federal Capital Territory Health & Human Services Secretariat	National Hospital, Abuja	University of Abuja Teaching Hospital, Gwagwalada
1	Gown	Piece	600	550	600	550	600	650	700	700
2	N95/KN95 Face Masks	Piece	800	900	1,000	900	800	1,400	1,200	1,200
3	Face Shield	Piece	400	300	400	300	400	300	600	600
4	Surgical Face Mask	Piece	2,000	2,500	2,000	2,500	2,000	2,500	2,000	2,000
5	Goggles	Piece	300	200	300	200	300	300	400	400
6	Bio-Hazard Bag	Piece	400	400	400	500	500	600	1000	1000
7	Digital Thermometer	Piece	0	50	0	50	0	100	0	0
8	Sharps Container (Plastic)	Piece	50	50	50	50	50	50	50	50
9	Hand Sanitizer 100ml	Piece	100	70	100	70	100	115	200	200
10	Hand Sanitizer 500ml	Piece	0	10	0	10	0	20	0	0
11	Shoe Cover	Pair	120	150	120	150	120	150	120	120
12	Dexamethasone tablets	Pack	50	65	65	65	65	65	65	65
13	Scrubs set (Reusable)	Piece	500	200	500	200	500	200	500	500
14	Coverall PPE	Piece	59	50	59	50	59	100	109	59
15	Chlorine solution	Piece	100	172	100	172	100	92	200	200
16	Examination Gloves	Pack	300	268	230	268	300	268	230	230

Table 9: Prepositioning of IPC commodities to states and tertiary treatment facilities for week 34

S/N	Item Description	U.o.M	Federal Medical Center, Bida	Nasarawa State Ministry of Health	Federal Medical Center, Keffi	Cross River State Ministry of Health	University of Calabar Teaching Hospital	Obafemi Awolowo University Teaching Hospital, Ile-Ife	Osun State Ministry of Health	Niger State Ministry of Health
1	Gown	Piece	600	550	600	550	600	600	550	550
2	N95/KN95 Face Masks	Piece	800	900	800	900	800	800	900	900
3	Face Shield	Piece	400	300	400	300	400	400	300	300
4	Surgical Face Mask	Piece	2000	2500	2000	2500	2000	2000	2500	2500
5	Goggles	Piece	300	200	300	200	300	300	200	200
6	Bio-Hazard Bag	Piece	400	400	400	400	400	400	400	400
7	Digital Thermometer	Piece	0	50	0	50	0	0	50	50
8	Sharps Container (Plastic)	Piece	50	50	50	50	50	50	50	50
9	Hand Sanitizer 100ml	Piece	100	70	100	70	100	100	70	70
10	Hand Sanitizer 500ml	Piece	0	10	0	10	0	0	10	10
11	Shoe Cover	Pair	120	150	120	150	120	120	150	150
12	Dexamethasone tablets	Pack	65	65	65	65	65	65	65	65
13	Scrubs set (Reusable)	Piece	500	200	500	200	500	500	200	200
14	Coverall PPE	Piece	59	50	59	50	59	59	50	50
15	Chlorine solution	Piece	100	172	100	172	100	100	172	172
16	Examination Gloves	Pack	230	268	230	268	230	230	268	268

Table 10: Prepositioning of IPC commodities to states and tertiary treatment facilities for week 34

S/N	Item Description	U.o.M	Federal Medical Center, Jalingo	Katsina State Ministry of Health	Ondo State Ministry of Health	Federal Medical Center, Akure	Yobe State Ministry of Health	Federal Medical Center, Nguru	Adamawa State Ministry of Health	Federal Medical Center, Yola
1	Gown	Piece	600	550	550	600	550	600	550	600
2	N95/KN95 Face Masks	Piece	800	900	900	800	900	800	900	1000
3	Face Shield	Piece	400	300	300	400	300	400	300	600
4	Surgical Face Mask	Piece	2000	2500	2500	2000	2500	2000	2500	2500
5	Goggles	Piece	300	200	200	300	200	300	300	500
6	Bio-Hazard Bag	Piece	400	400	400	400	400	400	500	600
7	Digital Thermometer	Piece	0	50	50	0	50	0	50	0
8	Sharps Container (Plastic)	Piece	50	50	50	50	50	50	50	50
9	Hand Sanitizer 100ml	Piece	100	70	70	100	70	100	140	200
10	Hand Sanitizer 500ml	Piece	0	10	10	0	10	0	20	0
11	Shoe Cover	Pair	120	150	150	120	150	120	150	120
12	Dexamethasone tablets	Pack	65	50	65	65	65	65	65	65
13	Scrubs set (Reusable)	Piece	500	200	200	500	200	500	200	500
14	Coverall PPE	Piece	59	50	50	59	50	59	50	59
15	Chlorine solution	Piece	100	172	172	100	172	100	172	100
16	Examination Gloves	Pack	230	268	268	230	268	230	268	230

IN FOCUS: Strengthening States' Response to COVID-19 in Nigeria

Since the onset of the global COVID-19 pandemic, the Nigeria Centre for Disease Control (NCDC) has led a multi-sectoral incident management system for Nigeria's public health response. We continue working closely with all 36 states and the Federal Capital Territory to strengthen diagnostic capacity, surveillance, case management and emergency response at the sub-national level.

The NCDC in collaboration with the World Health Organization (WHO) recently conducted an Intra Action Review (IAR) of the COVID-19 pandemic response with key stakeholders across the six geo-political zones in Nigeria. This was a review of the public health response to the COVID-19 pandemic, engaging various stakeholders and response pillars. In attendance were state-level Incident Managers, State Epidemiologists, and leads of Risk Communication, Surveillance, Laboratory, case management, Logistics and Vaccines, Infection Prevention and Control, Research and Coordination pillars from each of the 36 States and the FCT.

The outputs of each zonal IAR meeting are critical to the national and sub-national response to control the spread of COVID-19. The IAR provided an opportunity to review gaps and identify lessons learnt from response activities for the first and second waves, and collectively propose areas of improvement and update each state's COVID-19 incident action plan (IAP).

Following the zonal IAR meetings, a national IAR meeting was convened by NCDC and relevant stakeholders to deliberate on findings from the states IAR; review outbreak response in the ten key technical pillars— Coordination, Surveillance, Laboratory, Risk communication, Point of Entry, Logistics, Vaccine, Case management, Infection prevention and control, and Research; and update the national COVID-19 IAP.

The NCDC remains committed to working with State Ministries of Health, partners, and other stakeholders towards improving Nigeria's preparedness and response to infectious disease outbreaks. We urge all states to build on the lessons learned so far, investments in health security and response capacities available, in strengthening the response to COVID-19 and future outbreaks.

RESPONSE

On 28th February 2020, a multi-sectoral Emergency Operations Centre (EOC) was activated at Level 3 which is the highest emergency level in Nigeria. This is led by NCDC in close coordination with the State Public Health EOCs (PHEOC) and through the deployment of **58** Rapid Response Teams (RRT) to states. Currently, response activities include:

- **Held bi-weekly engagement meeting with state teams on the ongoing response to the third wave**
- **Concluded update and development of version five of the national guideline for clinical management of COVID-19**
- **Ongoing meetings with Health Commissioners of Akwa Ibom, Bayelsa, Cross River, and Rivers states in the Niger Delta region to commence RDT testing at the waterfronts.**
- **Reviewed surveillance data tools for effective data collection**
- **Ongoing assessment of 30 health facilities in FCT and Nasarawa State for IPC implementation in collaboration with Institute of Human Virology Nigeria (IHVN).**
- **Ongoing supportive supervision and assessment of the National Youth Service Corps (NYSC) orientation camp activities to ensure adherence to COVID-19 protocols**
- **Conducted training in quarantine centres and for staff of private hospitals in Lagos State on IPC and standard precautions against COVID-19**
- **Inspected IPC activities in secondary health facilities in Lagos State**
- **Conducted Ag-RDT screening for members of staff of the Federal Ministry of Women Affairs and Federal Ministry of Mines and Steel Development**
- **Supported Federal Medical Centre (FMC) Katsina Lab, Central Public Health Laboratory Lagos, Lagos University Teaching Hospital (LUTH) Lagos, Kubwa General Hospital Abuja, Bayero University Teaching Hospital Kano Laboratory, and Jigawa State Laboratory, University College Hospital Oyo, Rivers State University Teaching Hospital, Usman Danfodio University Sokoto, FMC Kebbi and Niger with laboratory consumables and personal protective equipment (PPE)**
- **Supported Abia, Akwa Ibom, Cross River and Kano State Ministry of Health (SMoH), National Hospital, Abuja as well as the 36 NYSC Camp sites and Federal Capital Territory (FCT) with rapid diagnostic test (RDT) kits for increase COVID-19 testing**
- **Concluded distribution of COVID-19 commodities to Ondo and Yobe States and the Federal Capital Territory (FCT) treatment centers**
- **Ongoing promotion of COVID-19 messages on testing, signs and symptoms, location of testing facilities, price of testing, and location of vaccination sites**
- **Continued engagement with states to ensure regular reporting and response continuity**
- **Continued roll out of Ag-RDT in collaboration with partners**
- **Continued tracking and collation of data from states for strategic coordination**
- **Continued collation of reports on COVID-19 clinical management study**
- **Ongoing COVID-19 vaccine effectiveness study in collaboration with National Primary Health Care Development Agency (NPHCDA) and WHO**
- **Ongoing study on knowledge and compliance of health care workers to infection prevention and control (IPC) measures in the control of COVID-19 infection**
- **Rolled out SORMAS Case Management module in the Federal Capital Territory (FCT)**
- **Concluded intensivist training in South-South and South-East geopolitical zones**
- **Ongoing research on drivers of mortality prognostic factors and other health sector challenges associated with COVID-19 deaths in treatment centres in Abia, Delta, Edo, FCT, Kaduna, Kano, Lagos, Niger, Ogun, Oyo, Plateau, Rivers, & Yobe States**

- Held meeting with relevant stakeholders from South-South region on the Delta variant and the response measures taken so far. This was convened by the Port Health Services (PHS) special task team on COVID-19 for Niger Delta and maritime borders.
- Supported testing of passengers at the ground crossing borders in Seme border, Lagos State and Idiroko border, Ogun State using Antigen-based Rapid Diagnostic Test Kits (Ag-RDT)
- Continued follow up with states for daily reporting, contact tracing and key challenges
- Ongoing enhanced surveillance at points of entry
- Ongoing review of IPC guidelines on management of suspected and confirmed cases of COVID-19
- Ongoing refresher workshop for IPC focal persons in health facilities
- Ongoing online classes for IPC Intermediate diploma course for IPC professionals
- Continued the sensitisation of schools, hospitals, patients and relations and religious bodies on hand hygiene
- Concluded intra-state cascade training on the appropriate and safe use of approved Ag-RDT in Bayelsa, Benue and Osun States
- Ongoing sequencing of positive samples among travellers to Nigeria and positive cases detected in-country, at the National Reference Laboratory (NRL), Gaduwa
- Ongoing quarterly commodity monitoring and stock verification exercise to reconcile data across states, check the available stock balance and utilisation records
- Ongoing prepositioning of PPE and commodities at the sub-national level for labs, treatment centres, sample collection centres and other relevant facilities as preparedness for surge in cases
- Ongoing media appearances on radio and television

PREPAREDNESS

Since the confirmation of the first case on 27th February 2020, the NCDC has released advisories and statements to help Nigerians and affected groups to respond to the pandemic:

- NCDC issued a press release on the [*detection of the first confirmed case of delta variant of SARS-CoV-2 in Nigeria*](#)
- Presidential Steering Committee on COVID-19 reviewed and published [*Travel advisory for passengers arriving Nigeria from Brazil, India and Turkey to include South Africa*](#)
- Presidential Steering Committee on COVID-19 published [*Travel advisory for passengers arriving Nigeria from Brazil, India and Turkey*](#)
- Presidential Steering Committee on COVID-19 published [*Implementation guidelines for phased restriction of movement*](#)
- NCDC published [*One year of COVID-19 response in Nigeria*](#)
- NCDC and NIMR publish [*findings of COVID-19 household seroprevalence surveys in four states of Nigeria*](#)
- NCDC published a [*Statement on variants of SARS-CoV-2 in Nigeria*](#)
- The Federal Ministry of Education (FME) and partners, PTF and NCDC have developed: [*Guidance for integrated safe school re-opening 26th January 2021*](#)
- COVID-19 Health Protection Regulation signed by President Muhammadu Buhari on 26th January 2021: [*Coronavirus Disease \(COVID-19\) Health Protection Regulations 2021*](#)
- NCDC published an updated [*community case definitions for coronavirus disease 2019*](#)
- The Federal Ministry of Health and NCDC published [*COVID-19 Patient's handbook for home-based care in Nigeria*](#)
- NCDC published an updated [*case definitions for coronavirus disease*](#)
- NCDC published [*Guidance for the use of approved COVID-19 antigen-based rapid diagnostic tests in Nigeria*](#)

- Update of [travel protocols](#) for all travellers into Nigeria from [UK and South Africa](#)
- NCDC recently launched the [Celebrate Responsibly](#) campaign in response to the increase in cases of coronavirus disease (COVID-19) and poor adherence to public health and social measures across the country: [Celebrate Responsibly and Save Lives – New Awareness Campaign for the Yuletide Season](#)
- Ahead of the Christmas and end of year festivity, NCDC published the [End-of-Year Travel Advisory on COVID-19](#)
- NCDC recently launched the [COVID-19 blog](#) for telling the stories of Nigeria's response to the COVID-19 pandemic.
- NCDC published guidelines on 2020 National Youth Service Corps (NYSC) Orientation Camp activities in conjunction with PTF and NYSC: [Guidelines on 2020 National Youth Service Corps \(NYSC\) Orientation Camp activities](#)
- NCDC published guidance on the use of antigen RDTS: [Guidance on the use of Antigen Rapid Diagnostic Kits for diagnosis of SARS-CoV-2 infection in Nigeria](#)
- NCDC published guidance on safe school re-opening: [Public Health guidance for Safe School re-opening in Nigeria](#)
- NCDC published second interim guidance – Infection Prevention and Control: [Recommendations during health care provision for suspected and confirmed cases of COVID-19](#)
- NCDC recently published the first edition of a quick reference guide on setting up sample collection centre - [A step by step guide on setting up a sample collection centre](#)
- NCDC has launched an online course on [Infection, Prevention and Control \(IPC\) for COVID-19](#) NCDC eLearning platform
- Ahead of forthcoming elections in the country, NCDC has issued [Guidelines for Conducting Elections During the COVID-19 Outbreak in Nigeria](#).
- To protect our elders, and those with pre-existing medical conditions, NCDC has issued an [Advisory for Vulnerable Groups](#).
- NCDC has released [guidelines on the re-opening of places for worship](#).
- NCDC has released [Strategies to Improve Surveillance for COVID-19 Guidance for States](#)
- The Nigeria Police Force has released COVID-19 operational guidelines for the [Police and other Law Enforcement Agencies in Nigeria](#)
- Guidelines have been issued for the [safe transportation of remains of persons suspected or confirmed to have died of COVID-19](#)
- Information on diagnostics of the COVID-19 virus can be found in our [detailed FAQ document](#).
- To increase our testing capacity, NCDC has issued guidelines for the [integration of private labs](#).
- Guidelines for [businesses and employers](#) have been updated.
- NCDC has updated its [case definition](#) , [community case definition](#) and [case management guide](#).
- NCDC releases periodic [public health advisories](#) to Nigerians on the COVID-19 disease.
- To adhere to post-lockdown measures, NCDC has released an [advisory on the use of face masks](#), as well as information on the [Use of Cloth face masks](#) and [how to make your cloth face masks](#).
- NCDC has released guidelines for the [management of pregnant women and nursing mothers](#) during the pandemic.
- To address burials of loved ones who die from COVID-19, guidelines have been issued to advise on the [management of dead bodies](#).
- For health centres managing cases, the following documents have been released- a guideline for the [Rational Use of Personal Protective Equipment in the care of COVID-19 cases](#).
- As part of plans to increase the testing capacity of the country, the NCDC published a [National Strategy to Scale Up Access to Coronavirus Disease Testing in Nigeria](#) document.
- The Presidential Task Force has published policies and announcements on COVID-19 [available on the website of the Presidency](#) – including presidential addresses, task force updates and information on livelihood and economic support.

INFORMATION RESOURCES

- Nigeria Centre for Disease Control: www.covid19.ncdc.gov.ng | www.ncdc.gov.ng
- Nigerian Presidency Website on COVID-19: www.statehouse.gov.ng/COVID19
- WHO Coronavirus Disease (COVID-19) Dashboard (**source for global updates**)
<https://covid19.who.int/>