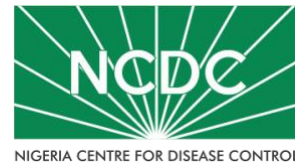


COVID-19 SITUATION REPORT

SITUATION REPORT 186

Tuesday, 1st September 2020



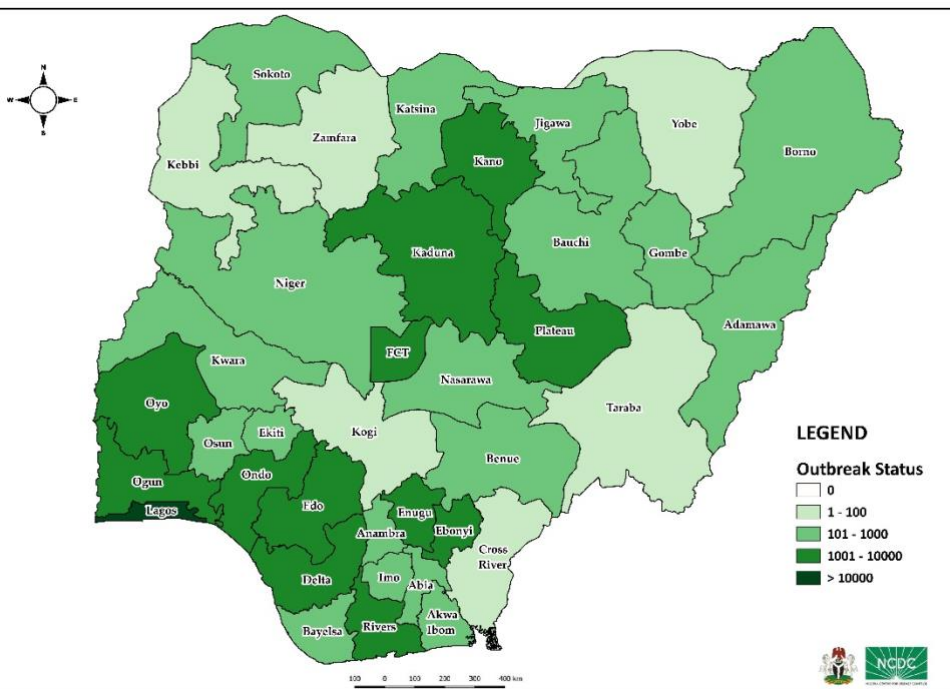
DATA AS REPORTED AND ACCURATE BY NCDC AS AT MIDNIGHT 1st SEPTEMBER 2020

HIGHLIGHTS

- Two hundred and thirty-nine (**239**) confirmed cases were reported in the last 24 hours from **15** states – Plateau (116), FCT (33), Lagos (19), Ekiti (12), Kaduna (11), Ogun (11), Ebonyi (8), Benue (7), Abia (5), Delta (5), Ondo (4), Edo (3), Imo (2), Osun (2) and Bauchi (1).
- Three hundred and seventy-two (**372**) discharges have been reported in the last 24 hours in **11** states – Plateau (109), Benue (75), Bauchi (52), Kano (44), Kaduna (27), FCT (17), Rivers (14), Imo (12), Edo (11), Ogun (8) and Osun (3).
- Ten (**10**) deaths were reported in the last 24 hours in **two** states – FCT (9) and Delta (1).
- All **36** states in Nigeria, and the FCT, have reported a confirmed case.

STATE OF THE NATION

Figure 1: Map of Nigeria showing 36 states and FCT affected by COVID-19



SITUATION UPDATES

Total (New in the last 24 hours)

SAMPLES TESTED

411,077 (5,161)¹

CONFIRMED CASES

54,247 (239)

AFFECTED STATES INCLUDING FCT

37

DISCHARGED CASES

42,010 (372)

CONFIRMED FATALITIES

1,023 (10) – 1.9% CFR

DEMOGRAPHICS

MALE – 34,522 (64%)

FEMALE – 19,725 (36%)

MOST AFFECTED AGE GROUP

31 - 40 (25%)

PERSONS OF INTEREST

11,622 (Total)

11,546 (99.3% - Exceeded Follow Up)

PROVENANCE

TRAVEL HISTORY – 850 (1%)

CONTACTS – 12,784 (24%)

UNKNOWN EXPOSURE – 40,613 (75%)

GLOBAL UPDATES

TOTAL NUMBER OF CASES

25,327,098 (848,255 deaths)

COUNTRIES & TERRITORIES AFFECTED

216*

*Excluding the 2 International Conveyance

¹- Includes backlog of negative samples tested

GENERAL FACT SHEET – DATA AS AT 1st SEPTEMBER 2020

Table 1: States with reported laboratory-confirmed COVID-19 cases, recoveries, deaths, samples tested and days since last reported case

STATES	CONFIRMED CASES		DISCHARGED CASES		DEATHS		TOTAL ACTIVE CASES	NUMBER OF SAMPLES COLLECTED	DAYS SINCE LAST REPORTED CASE
	TOTAL	NEW	TOTAL	NEW	TOTAL	NEW			
Lagos	18,157	19	15,231	0	202	0	2,724	100,607	0
FCT	5,202	33	1,553	17	59	9	3,590	49,022	0
Oyo	3,118	0	1,954	0	37	0	1,127	19,807	2
Plateau	2,649	116	1,504	109	29	0	1,116	24,469	0
Edo	2,587	3	2,336	11	100	0	151	15,075	0
Kaduna	2,152	11	2,018	27	12	0	122	16,771	0
Rivers	2,141	0	1,985	14	57	0	99	17,054	2
Delta	1,749	5	1,540	0	48	1	161	8,899	0
Kano	1,727	0	1,581	44	54	0	92	43,441	1
Ogun	1,659	11	1,523	8	26	0	110	11,746	0
Ondo	1,543	4	1,380	0	31	0	132	6,752	0
Enugu	1,162	0	907	0	21	0	234	4,254	1
Ebonyi	1,001	8	931	0	27	0	43	5,520	0
Kwara	966	0	784	0	25	0	157	5,139	1
Katsina	796	0	457	0	24	0	315	12,141	1
Osun	784	2	737	3	17	0	30	3,729	0
Abia	776	5	697	0	8	0	71	5,502	0
Borno	741	0	671	0	36	0	34	11,156	1
Gombe	723	0	636	0	23	0	64	11,378	3
Bauchi	668	1	633	52	14	0	21	7,742	0
Imo	529	2	205	12	11	0	313	3,308	0
Benue	460	7	291	75	9	0	160	3,189	0
Nasarawa	434	0	298	0	12	0	124	3,220	3
Bayelsa	391	0	348	0	21	0	22	1,493	3
Jigawa	322	0	308	0	11	0	3	2,862	47
Akwa Ibom	278	0	232	0	8	0	38	2,154	5
Ekiti	274	12	203	0	4	0	67	4,172	0
Niger	243	0	216	0	12	0	15	1,783	1
Adamawa	228	0	180	0	15	0	33	1,935	1
Anambra	216	0	168	0	18	0	30	1,271	1
Sokoto	159	0	140	0	16	0	3	1,976	1
Kebbi	93	0	82	0	8	0	3	853	4
Taraba	87	0	73	0	5	0	9	705	7
Cross River	82	0	73	0	8	0	1	839	8
Zamfara	78	0	73	0	5	0	0	397	12
Yobe	67	0	59	0	8	0	0	475	33
Kogi	5	0	3	0	2	0	0	241	60
Total	54,247	239	42,010	372	1,023	10	11,214	411,077	

States, including FCT, are arranged in descending order by number of total confirmed cases and then alphabetical order

SELECTED CHARTS

Figure 2: Daily Epidemic Curve of Confirmed Cases (WK9 – WK36)

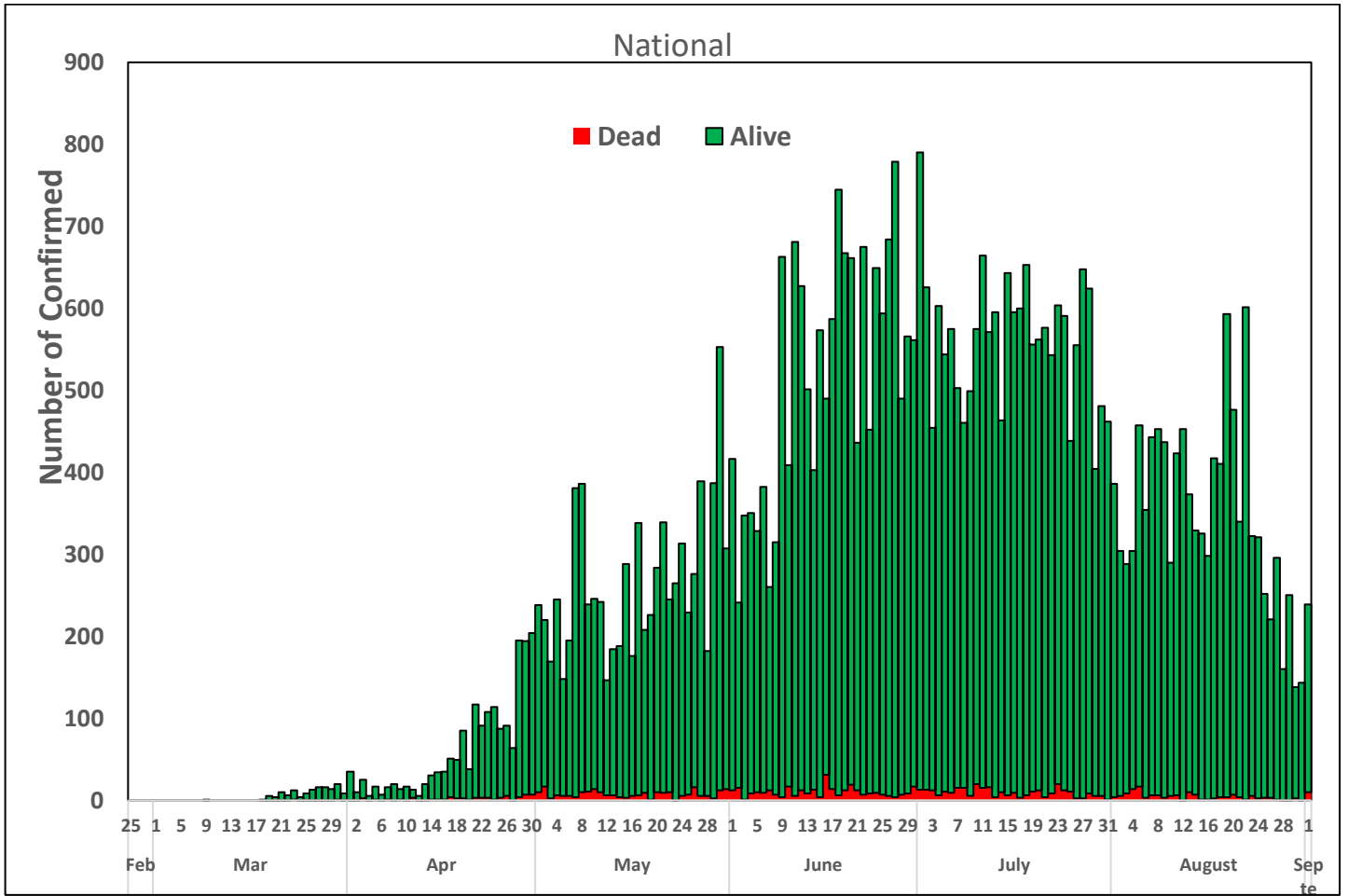
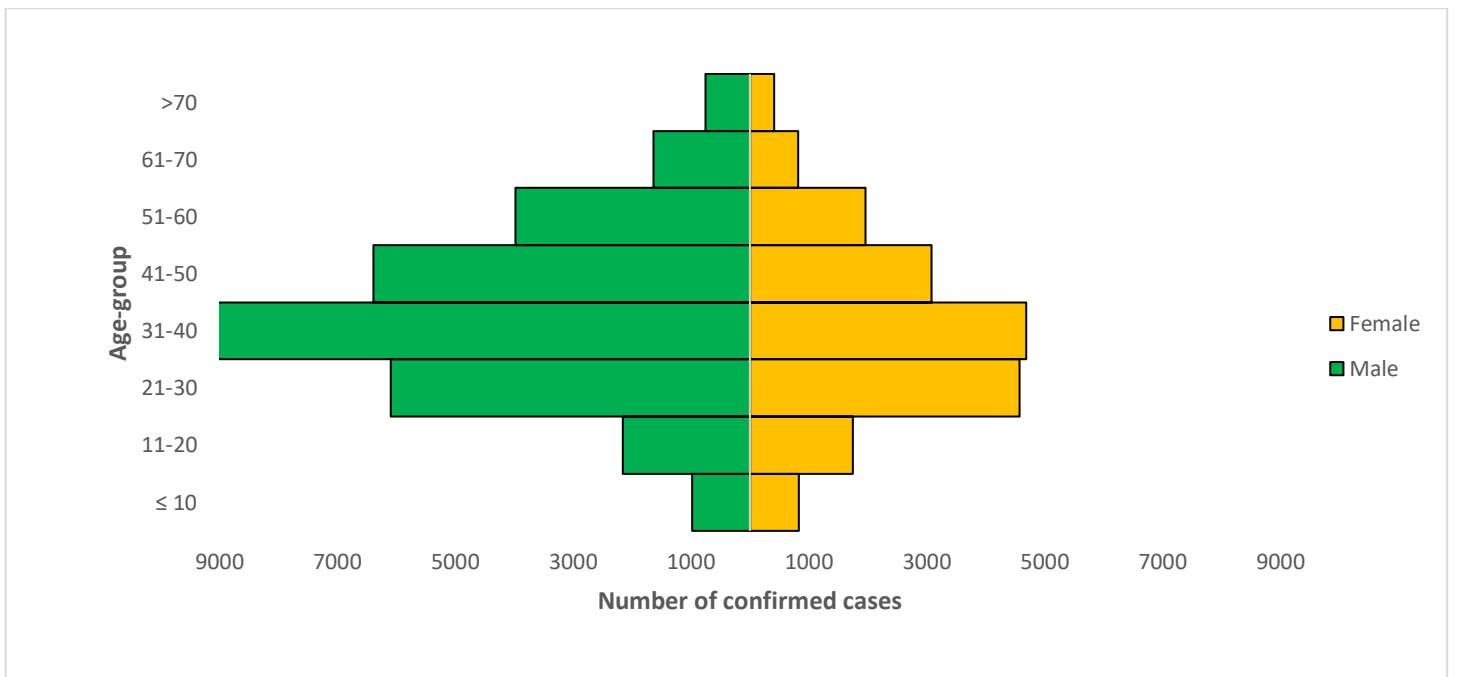


Figure 3: Age-Sex Distribution of Confirmed Cases (WK9 – WK36)



PREPAREDNESS

Since the confirmation of the first case on 27th February 2020, the NCDC has released advisories and statements to help Nigerians and affected groups in particular to respond to the pandemic

- NCDC recently published the first edition of a quick reference guide on setting up sample collection centre - [A step by step guide on setting up a sample collection centre](#)
- NCDC has launched an online course on [Infection, Prevention and Control \(IPC\) for COVID-19](#) NCDC eLearning platform
- Ahead of forthcoming elections in the country, NCDC has issued [Guidelines for Conducting Elections During the COVID-19 Outbreak in Nigeria](#).
- To protect our elders, and those with pre-existing medical conditions, NCDC has issued an [Advisory for Vulnerable Groups](#).
- NCDC has released [guidelines on the re-opening of places for worship](#).
- NCDC has released [Strategies to Improve Surveillance for COVID-19 Guidance for States](#)
- The Nigeria Police Force has released COVID-19 operational guidelines for the [Police and other Law Enforcement Agencies](#) in Nigeria
- Guidelines have been issued for the [safe transportation of remains of persons suspected or confirmed to have died of COVID-19](#)
- Information on diagnostics of the COVID-19 virus can be found in our [detailed FAQ document](#).
- To increase our testing capacity, NCDC has issued guidelines for the [integration of private labs](#).
- Guidelines for [businesses and employers](#) have been updated.
- NCDC has updated its [case definition](#) , [community case definition](#) and [case management guide](#).
- NCDC releases periodic [public health advisories](#) to Nigerians on the COVID-19 disease.
- To adhere to post-lockdown measures, NCDC has released an [advisory on the use of face masks](#), as well as information on the [Use of Cloth face masks](#) and [how to make your cloth face masks](#).
- NCDC has released guidelines for the [management of pregnant women and nursing mothers](#) during the pandemic.
- To address burials of loved ones who die from COVID-19, guidelines have been issued to advise on the [management of dead bodies](#).
- For health centres managing cases, the following documents have been released- a guideline for the [Rational Use of Personal Protective Equipment in the care of COVID-19 cases](#).
- As part of plans to increase the testing capacity of the country, the NCDC published a [National Strategy to Scale Up Access to Coronavirus Disease Testing in Nigeria](#) document.
- The Presidential Task Force has published policies and announcements on COVID-19 [available on the website of the Presidency](#) – including presidential addresses, task force updates and information on livelihood and economic support.

RESPONSE

On 28th February 2020, a multi-sectoral Emergency Operations Centre (EOC) was activated at Level 3 – the highest emergency level in Nigeria –led by NCDC in close coordination with the State Public Health EOCs (PHEOC).

- **Ongoing licensing/accreditation of additional private laboratories with Medical Laboratory Science Council of Nigeria (MLSCN) in preparation for the opening of the international airports in Abuja and Lagos**
- **Trained 10 Infection Prevention and Control (IPC) focal persons from health facilities in Minna, Niger State**
- **Supported Federal Ministry of Education and Environment partners in the development of school readiness templates in preparation for sustained school resumption with costed models**
- **Completed deployment of Surveillance Outbreak Response Management and Analysis System (SORMAS) tool in Kwara and Benue States**

- Commenced a 4-day refresher training on biosafety, biosecurity and risk assessment for all laboratories in the network at National Reference Laboratory (NRL), Gaduwa, FCT
- Concluded waste management assessment in Ogun State, Olabisi Onabanjo University Teaching Hospital (OOUTH) and Federal Medical Centre (FMC) Abeokuta
- Currently working with Technical Assistants and state teams to strengthen mobilisation of partners support
- All education materials can be found via www.covid19.ncdc.gov.ng