



SITUATION REPORT

Nigeria Centre For Disease Control (NCDC)

www.ncdc.gov.ng

PLOT 800 EBITU UKIWE STREET, JABI ABUJA, NIGERIA. TOLL FREE CALL: 0800-970000-10. E: info@ncdc.gov.ng

@NCDCgov

TITLE:	2018 LASSA FEVER OUTBREAK IN NIGERIA
SERIAL NUMBER:	27
EPI-WEEK:	27
DATE:	8th July 2018

HIGHLIGHTS

- In the reporting Week 27 (July 2-8, 2018) seven new confirmedⁱⁱ cases were reported from Ondo(3), Edo(2), Taraba(1) and Plateau (1) with three deaths Ondo(2) and Plateau (1)
- From 1st January to 8th July 2018, a total of 2115 suspectedⁱ cases have been reported from 21 states. Of these, **446 were confirmed positive, 10 are probable, 1652 negative** (not a case)
- Since the onset of the 2018 outbreak, there have been 115 deaths in confirmed cases and 10 in probable cases. Case Fatality Rate in confirmed cases is 25.4% -Table 1
- 21 states have recorded at least one confirmed case across 71 Local Government Areas (Edo, Ondo, Bauchi, Nasarawa, Ebonyi, Anambra, Benue, Kogi, Imo, Plateau, Lagos, Taraba, Delta, Osun, Rivers, FCT, Gombe, Ekiti, Kaduna, Abia and Adamawa). **Seventeen** states have exited the active phase of the outbreak while **four**- Edo, Ondo, Plateau and Taraba States remain active^{iv} -Table 1/ Figure 1
- In the reporting week 27, no new healthcare worker was infected. **Thirty-nine health care workers have been affected since the onset of the outbreak in seven states** –Ebonyi (16), Edo (14), Ondo (4), Kogi (2), Nasarawa (1), Taraba (1) and Abia (1) with ten deaths in Ebonyi (6), Kogi (1), Abia (1), Ondo (1) and Edo (1)
- 81% of all confirmed cases are from Edo (42%), Ondo (24%) and Ebonyi (15%) states
- Four patients are currently being managed at treatment Centres – two at Irrua Specialist Teaching Hospital (ISTH) and two at the Federal Medical Centre Owo treatment Centre - Table 1
- A total of **5713** contacts have been identified from 21 states. Of these **156(2.7%)** are currently being followed up, 5547 (97.1%) have completed 21 days follow up while 10(0.2%) were lost follow up. 85 symptomatic contacts have been identified, of which **29 (34%)** have tested positive from five states (Edo-13, Ondo-8, Ebonyi-3, Kogi -3 Bauchi-1 and Adamawa-1) - Table 1
- Lassa fever national multi-partner, multi-agency Technical Working Group(TWG) continues to coordinate response activities at all levels



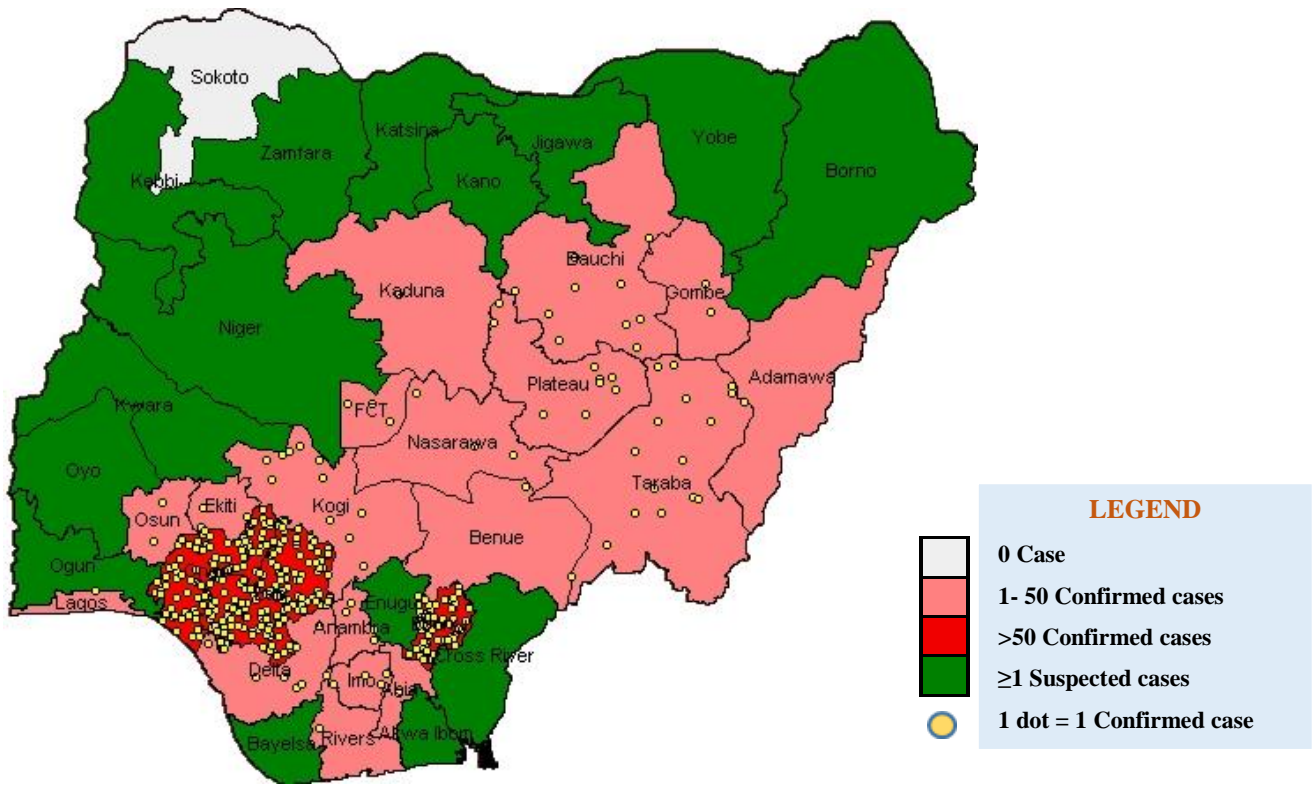


Figure 1. Distribution of Confirmed Lassa Fever cases in Nigeria as at 8th July, 2018

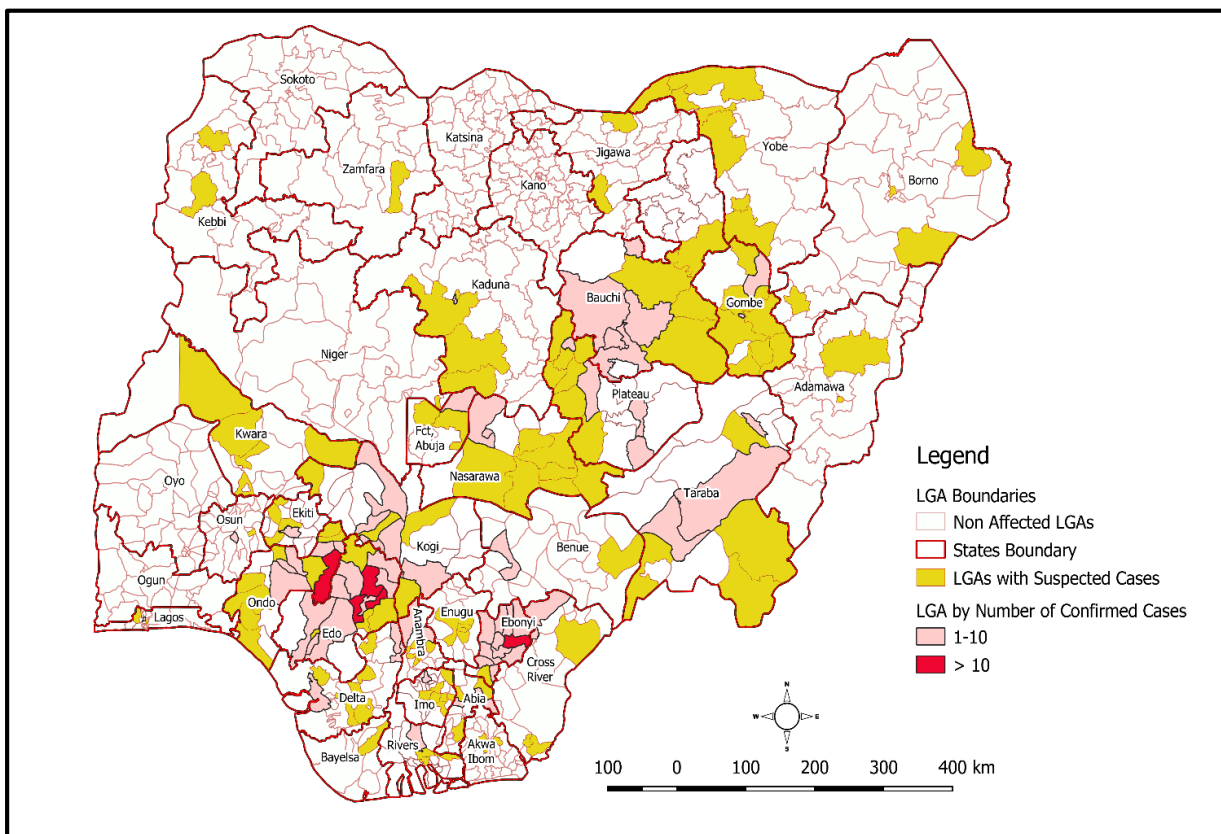


Figure 2. Distribution of Suspected and Confirmed Lassa Fever cases in Nigeria by LGA

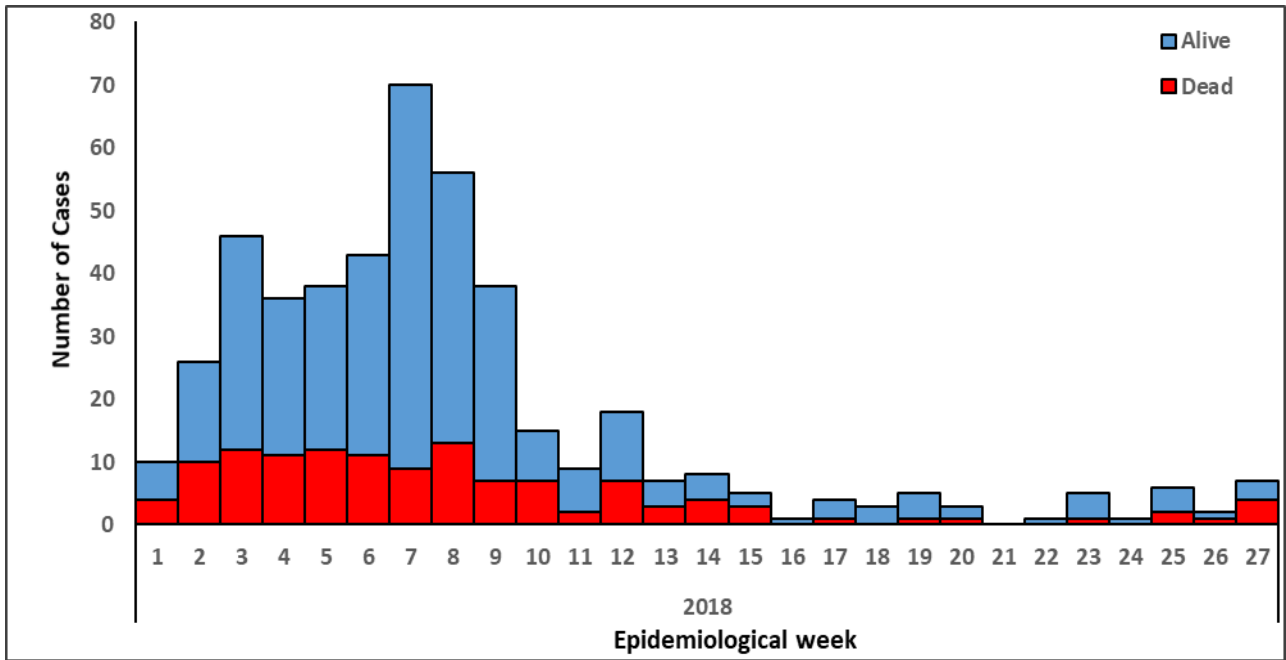


Figure 3. Epicurve of Lassa fever Confirmed (446) and Probable (10) Cases in Nigeria week 1- 27, 2018

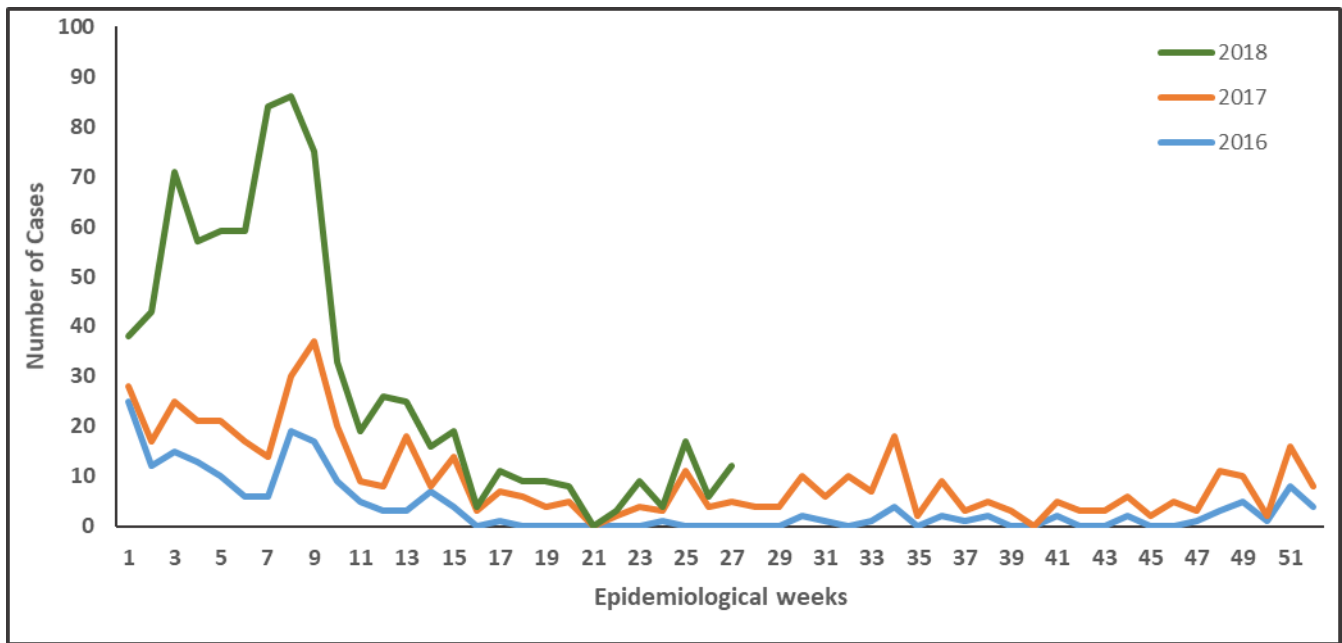


Figure 4. Weekly trends of Lassa fever Confirmed Cases in Nigeria, 2016-2018

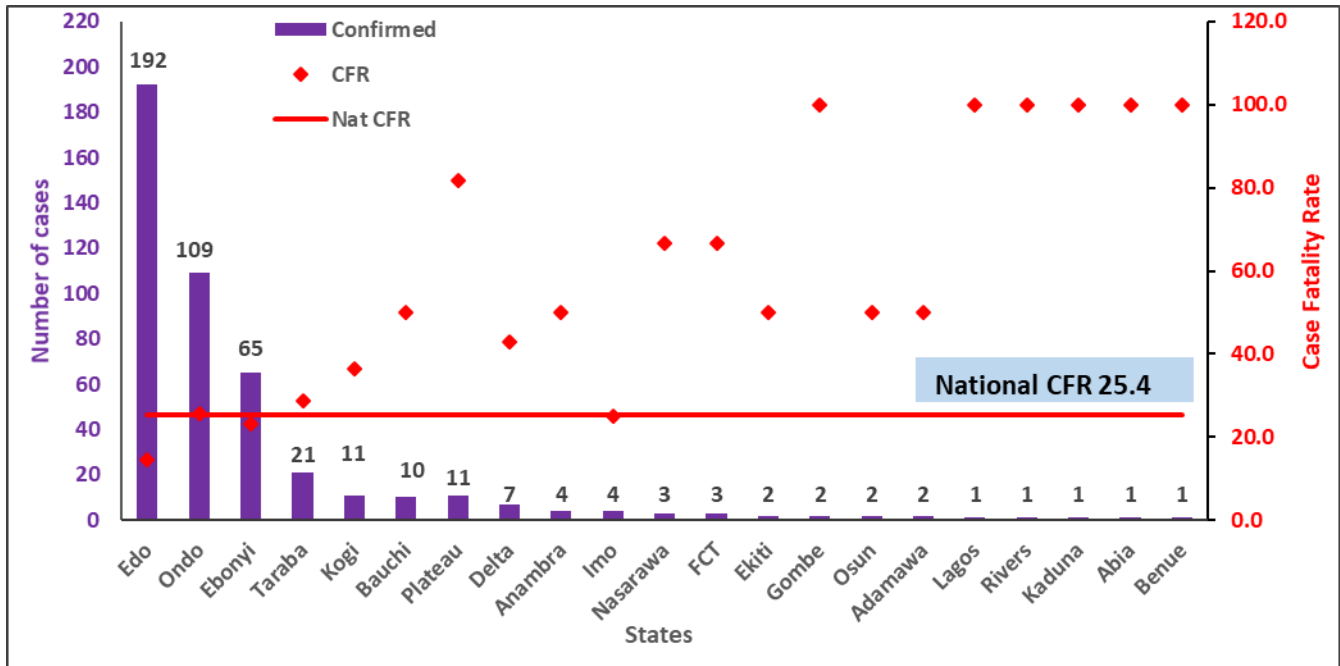


Figure 5. Confirmed Lassa fever cases in Nigeria with state specific Case Fatality Rates (CFR) as at 8th July 2018

ⁱSuspected case describes any individual presenting with one or more of the following: malaise, fever, headache, sore throat, cough, nausea, vomiting, diarrhoea, myalgia, chest pain, hearing loss and either a. History of contact with excreta or urine of rodents b. History of contact with a probable or confirmed Lassa fever case within a period of 21 days of onset of symptoms OR Any person with inexplicable bleeding/hemorrhagia.

ⁱⁱAny suspected case with laboratory confirmation (positive IgM antibody, PCR or virus isolation)

ⁱⁱⁱAny suspected case (see definition above) who died without collection of specimen for laboratory testing

^{iv}“Active” means where there has been at least one confirmed case, and contacts within 21 days post exposure

Disclaimer – The information contained in this document is confidential, privileged and only for the intended recipient and may not be used, published or redistributed to the public. A redacted version is available on

<http://ncdc.gov.ng/diseases/sitreps>