

SITUATION REPORT

Nigeria Centre For Disease Control (NCDC)

www.ncdc.gov.ng

PLOT 800 EBITU UKIWE STREET, JABI ABUJA, NIGERIA. TOLL FREE CALL: 0800-970000-10. E: info@ncdc.gov.ng



@NCDCgov

TITLE:	MONKEYPOX OUTBREAK IN NIGERIA
SERIAL NUMBER:	011
EPI-WEEK:	49
DATE:	09 DECEMBER, 2017

KEY INDICATORS	NUMBERS
Total suspected cases	172
Total deaths	1
Confirmed cases	61
Total samples received for diagnosis	160
States that have reported at least one suspected case (including FCT)	23
Health worker infection	1

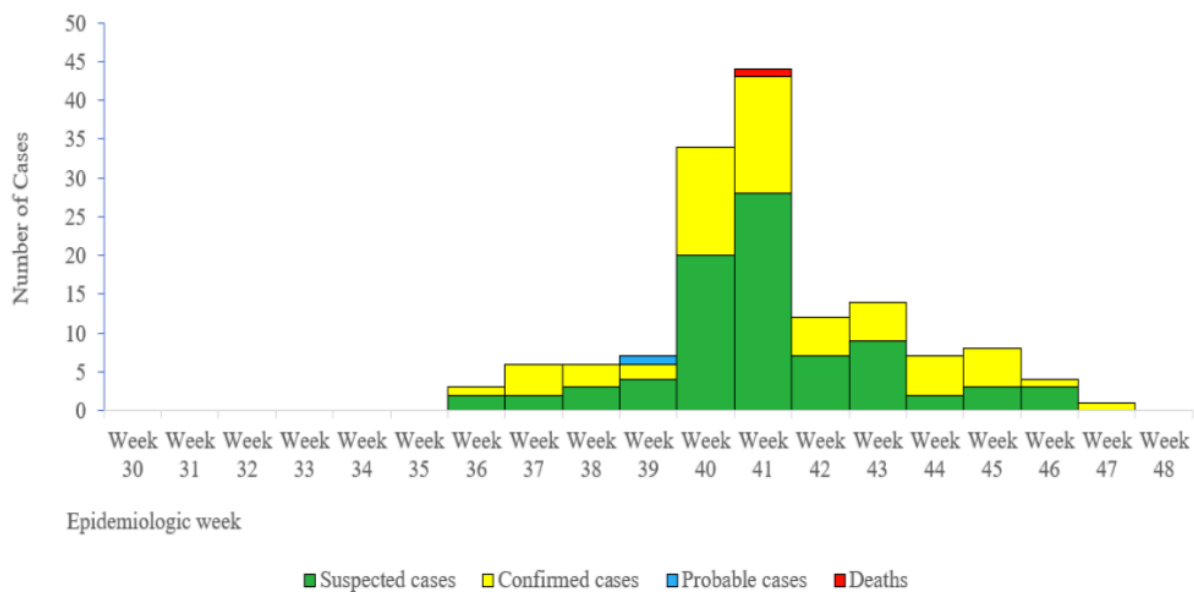
HIGHLIGHTS

- The Nigeria Centre for Disease Control (NCDC) continued to coordinate the response through its activated Emergency Operations Centre (EOC)
- However, the monkeypox EOC has been deactivated this week and the response will henceforth be coordinated by a technical working group comprising of all existing response partners
- Sixty-one (61) confirmed cases and two (2) probable cases recorded since the onset of the outbreak
- One new suspected case reported from Adamawa State in the reporting week
- NCDC National Reference Laboratory, Abuja continued laboratory diagnosis of monkeypox with improved turn-around time
- There has been a decline in the number of new suspected cases reported over the last five weeks
- Since the onset of the outbreak, a total of 172 cases (suspected, confirmed and probable) have been recorded from 22 States and the Federal Capital Territory (FCT)
- One death has been recorded in a confirmed case with background immune-compromised condition
- To enhance data management and realtime mapping of cases and contacts, the Surveillance and Outbreak Response Management System (SORMAS) app was deployed on November 4, 2017 to the outbreak.

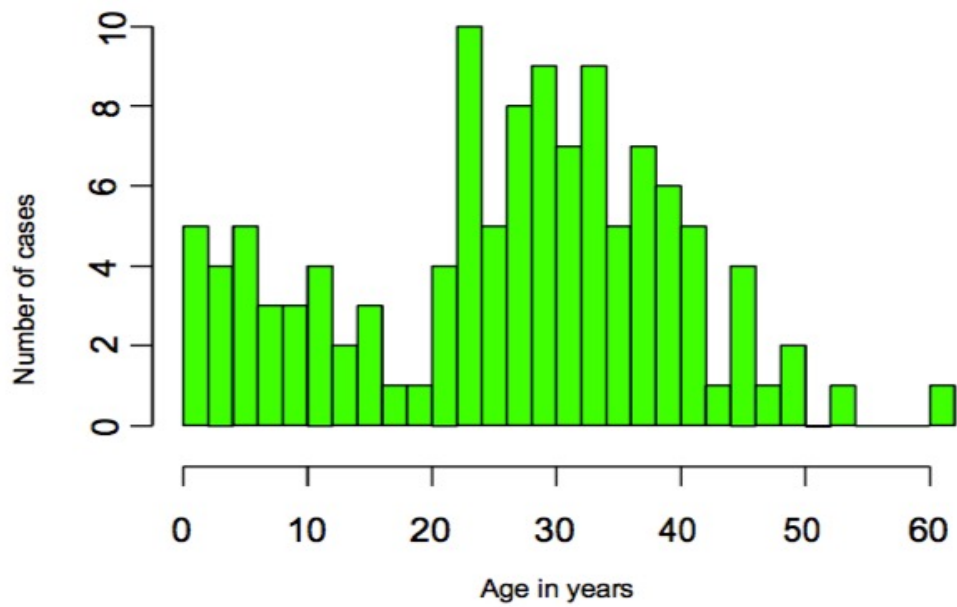


EPI-SUMMARY

- Two new confirmed cases were recorded in the reporting week from Bayelsa.
- Out of a total of 1 67 suspected cases reported from 22 States and the FCT 61 cases have been confirmed in 14 States
- Clustering of cases was demonstrated in some instances. However, no known evidence yet of epidemiological linkages across States
- Preliminary genetic sequencing suggests multiple sources of introduction of monkeypox virus into human population
- The male to female ratio for confirmed cases is 3:1
- The most affected age group is 21-40 years (Median Age = 30)
- One (1) death has been recorded from a confirmed case with background immunosuppressive illness β 11 (7%) out of 149 contact listed became cases demonstrating human to human infection β One infection in a health care worker managing cases have been confirmed



Distribution of Monkeypox cases in Nigeria by Epi-week (36 to 49), 2017



Age Distribution of Monkeypox Cases Since Onset of Outbreak (Epi-week 36 to 49, 2017)