



# Weekly Epidemiological Report

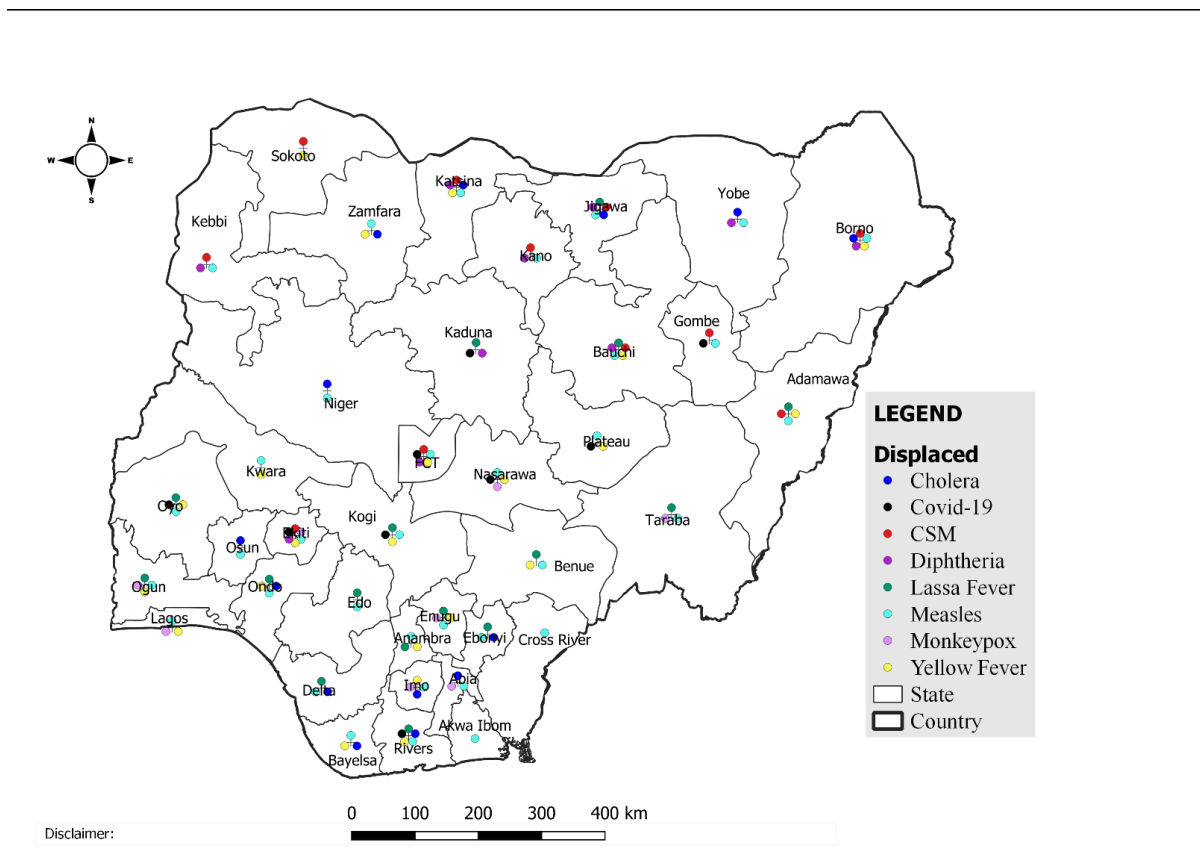
## Week 9: 26<sup>th</sup> February – 3<sup>rd</sup> March 2024

### Summary of Incidents

<b>Ongoing incidents</b>
<b>2</b>

Ongoing incidents are defined as confirmed cases where a national EOC or equivalent has been activated (Lassa Fever and Diphtheria)

Other incidents are those with confirmed cases for which EOC is not activated



Data Source: SITAware

## Summary

Week 9: 26<sup>th</sup> February – 3<sup>rd</sup> March 2024

Lassa Fever <sup>1,2</sup>	Cerebrospinal Meningitis (CSM) <sup>1,4</sup>	Yellow Fever <sup>1,4</sup>
694 Suspected case(s)	315 Suspected case(s)	52 Suspected case(s)
109 Confirmed case(s)	12 Confirmed case(s)	0 Confirmed case(s)
20 Death(s)	15 Death(s)	0 Death(s)
Cholera <sup>1,4</sup>	Measles <sup>1,4</sup>	Mpox <sup>1,4</sup>
93 Suspected case(s)	882 Suspected case(s)	41 Suspected case(s)
1 Confirmed case(s)	117 Confirmed case(s)	0 Confirmed case(s)
3 Death(s)	6 Death(s)	0 Death(s)
Acute Flaccid Paralysis (AFP) <sup>1,4</sup>	National Sentinel influenza surveillance <sup>5</sup>	Coronavirus Disease <sup>1,</sup>
246 Suspected case(s)	45 Suspected case(s)	43 Suspected case(s)
0 Confirmed case(s)	1 Confirmed case(s)	43 Confirmed case(s)
0		0 Death(s)
Diphtheria <sup>1,4</sup>		
555 Suspected case(s)		
392 Confirmed case(s)		
5 Death(s)		

- Information for this disease was retrieved from the Technical Working Group and Situation Reports
- Case Fatality Rate (CFR) for this disease is reported for confirmed cases only.
- CFR for this disease is reported for total cases i.e. suspected + confirmed.
- Information for sentinel influenza was retrieved from the laboratory.

## Lassa Fever

### Week 9

Suspected cases	Confirmed cases	Deaths	Number of States and LGAs affected
694	109	20	State: 32 + FCT LGA: 51

### Year to date (week 1 – 9)

Suspected cases		Confirmed cases		Deaths		CFR	
2023	2024	2023	2024	2023	2024	2023	2024
3272	3914	676	682	109	128	16.1%	18.8%

Figure 1: Number of suspected and confirmed cases of Lassa Fever, Nigeria, Weeks 1 – 9, 2024

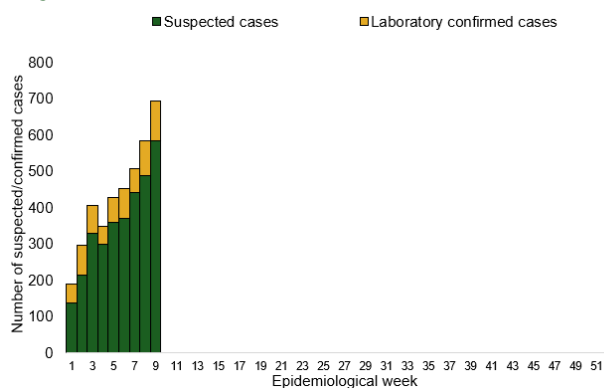
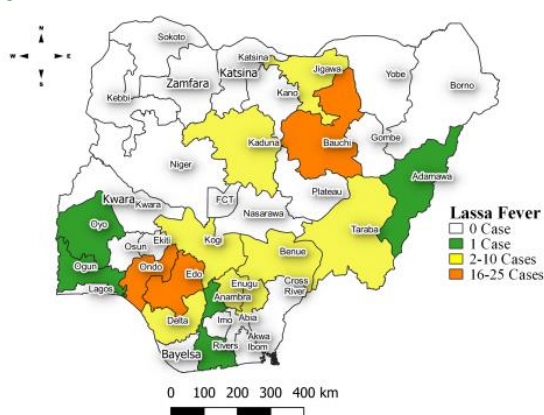


Figure 2: Location of **confirmed** cases of Lassa Fever by State, Nigeria, week 9, 2024



## Key points

- There were 694 suspected cases of Lassa Fever reported from 51 LGAs in 32 states and FCT. There were 109 laboratory confirmed cases and 20 deaths were recorded.

## Actions

### To date:

- National Lassa fever multi-partner, multi-sectoral Technical Working Group (TWG) continues to coordinate the response activities at all levels.
- Building the capacity of IPC Focal person/team in health facilities on Infection Prevention and Control
- Coordinating the implementation of IPC Programmes at Designated treatment Centres and health facilities through continuous preparedness, readiness, and response activities.
- Engage in the ECHO meeting with health workers on Lassa fever in collaboration with US CDC
- Support Jigawa to activate the IMS system

## Cerebrospinal Meningitis (CSM)

### Week 9

Suspected cases	Confirmed cases	Deaths	Number of States and LGAs affected
315	12	15	State: 11 + FCT LGA: 38

### Year to date (week 1 – 9)

Suspected cases		Confirmed cases		Deaths		CFR	
2023	2024	2023	2024	2023	2024	2023	2024
524	1290	45	34	21	77	4%	6%

Figure 3: Number of suspected and confirmed cases of CSM, Nigeria, weeks 1 – 9, 2024

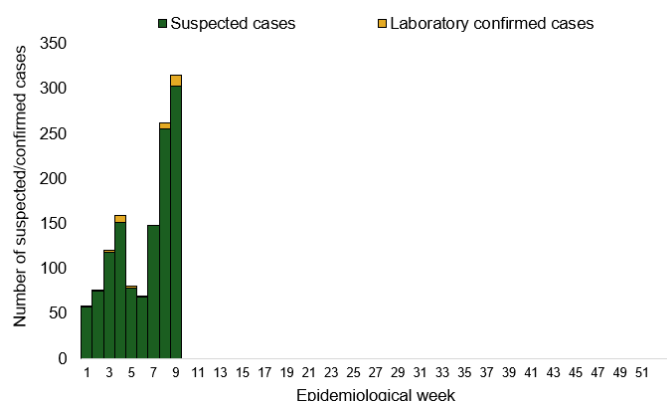
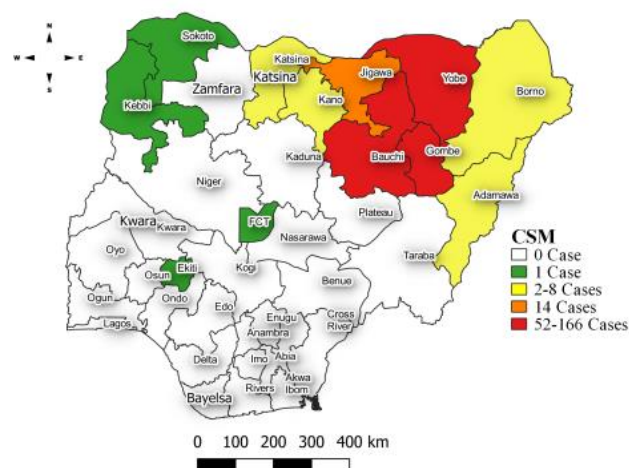


Figure 4: Location of suspected cases of CSM by State, Nigeria, week 9, 2024



### Key points

- There were 315 suspected cases of Cerebrospinal meningitis (CSM) reported from 38 LGAs in 11 states and FCT. There were 12 laboratory confirmed cases and 15 deaths were reported.

### Actions

#### To date:

- National CSM TWG meets weekly to review reports from states and plan appropriately.

## Yellow Fever

### Week 9

Suspected cases	Confirmed cases	Deaths	Number of States and LGAs affected
52	0	0	State: 23 + FCT LGA: 42

### Year to date (week 1 – 9)

Suspected cases		Confirmed cases		Deaths		CFR	
2023	2024	2023	2024	2023	2024	2023	2024
474	575	2	0	1	0	0.2%	0%

Figure 5: Number of suspected and confirmed cases of Yellow Fever, Nigeria, weeks 1 – 9, 2024

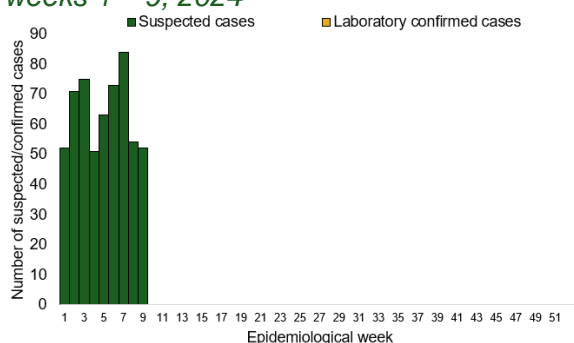
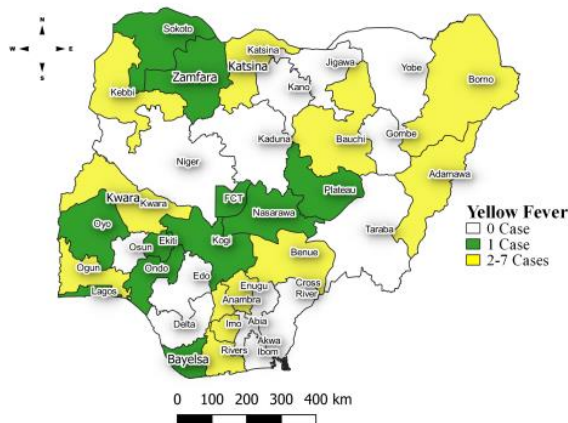


Figure 6: Location of suspected cases of Yellow Fever by States, Nigeria, week 9, 2024



### Key points

- There were 52 suspected cases of Yellow Fever (YF) reported from 42 LGAs in 23 states and FCT. There was no laboratory confirmed case and no death was recorded.

### Actions

#### To date:

- National YF multi-partner Technical Working Group (TWG) continues to coordinate activities across states.
- Harmonizing surveillance and laboratory data
- National YF multi-partner Technical Working Group (TWG) continues to coordinate activities across states.
- Daily monitoring and analysis of surveillance data across the country to guide response activities.
- Coordination of yellow fever sample management and transportation from all states to the regional reference laboratories
- Regular testing of yellow fever samples in all the testing laboratories

## Cholera

### Week 9

Suspected cases	Confirmed cases	Deaths	Number of States and LGAs affected
93	1	3	State: 13 LGA: 24

### Year to date (week 1 – 9)

Suspected cases		Confirmed cases		Deaths		CFR	
2023	2024	2023	2024	2023	2024	2023	2024
1665	782	24	2	51	16	3.1%	2.1%

Figure 7: Number of suspected and confirmed cases of Cholera, Nigeria, weeks 1 – 9, 2024

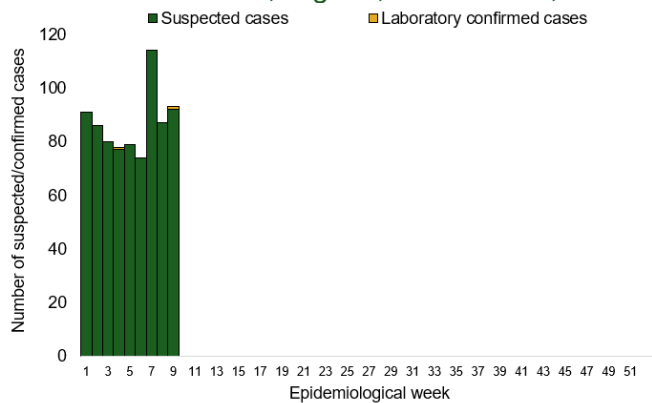
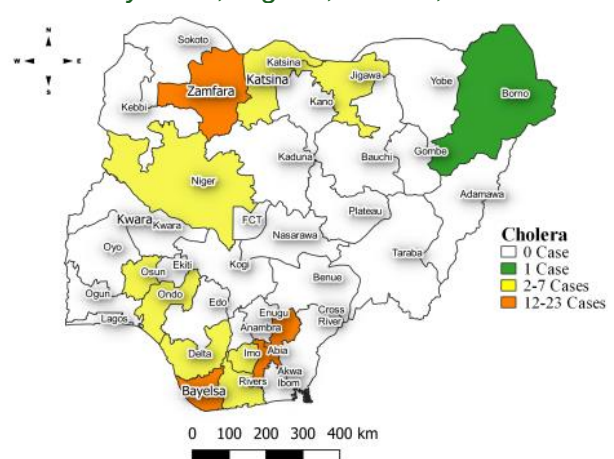


Figure 8: Location of suspected cases of Cholera by State, Nigeria, week 9, 2024



### Key points

- There were 93 suspected cases of Cholera reported from 24 LGAs in 13 states. There was one laboratory confirmed case and three deaths were recorded.

### Actions To date

- National Cholera Multi-Sectoral Technical Working Group (TWG) is monitoring all states and supporting affected states.

## Measles

### Week 9

Suspected cases	Confirmed cases	Deaths	Number of States and LGAs affected
882	117	6	State: 34 + FCT LGA: 254

### Year to date (week 1 – 9)

Suspected cases		Confirmed cases		Deaths		CFR	
2023	2024	2023	2024	2023	2024	2023	2024
5744	6494	598	972	0	39	0%	0.6%

Figure 9: Number of suspected and confirmed cases of Measles, Nigeria, weeks 1 – 9, 2024.

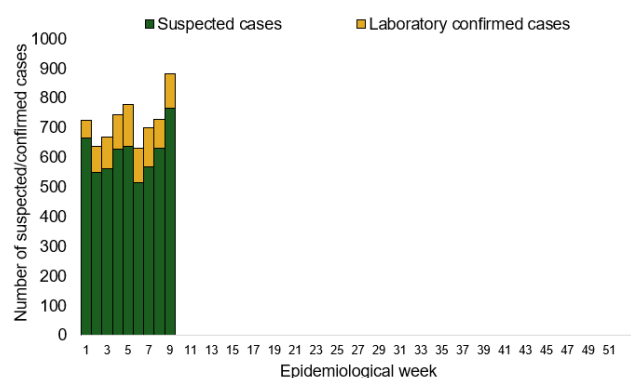
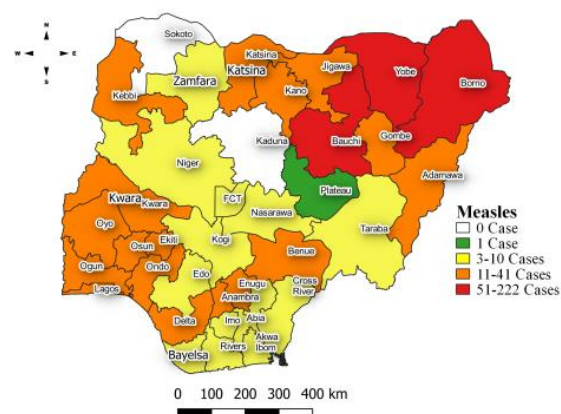


Figure 10: Location of suspected cases of Measles by State, Nigeria, week 9, 2024



### Key points

- There were 882 suspected cases of Measles reported from 254 LGAs in 34 states and FCT. There were 117 laboratory confirmed cases and six deaths were recorded.

### Actions

#### To date

- National Measles TWG is closely monitoring measles surveillance data and providing feedback to relevant agencies and development partners.



# Mpox

## Week 9

Suspected cases	Confirmed cases	Deaths	Number of States and LGAs affected
41	0	0	State: 9 LGA: 17

## Year to date (week 1 – 9)

Suspected cases		Confirmed cases		Deaths		CFR	
2023	2024	2023	2024	2023	2024	2023	2024
401	199	50	6	2	0	0.5%	0%

Figure 11: Number of suspected and confirmed cases of Mpox, Nigeria, weeks 1–9, 2024.

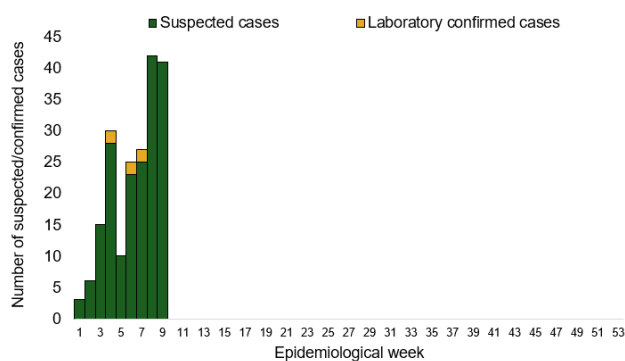
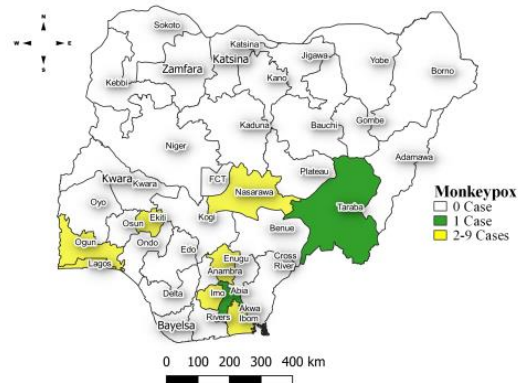


Figure 12: Location of suspected cases of Mpox by State, Nigeria, week 9, 2024



### Key points

- There were 41 suspected cases of Mpox reported from 17 LGAs in nine states. There was no laboratory confirmed case and no death was recorded.

### Actions

#### To date

- National Mpox Technical Working Group (TWG) is monitoring activities in all states.



## Acute Flaccid Paralysis (AFP)

### Week 9

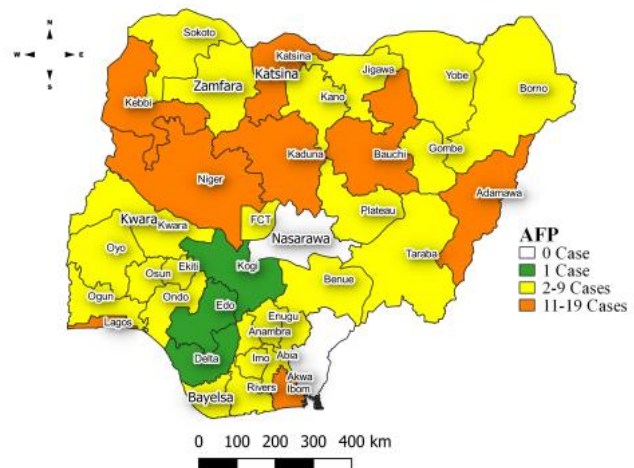
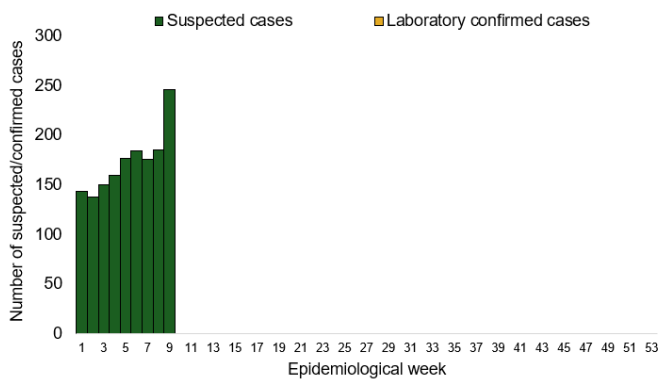
Suspected cases	Confirmed cases	Deaths	Number of States and LGAs affected
246	0	0	State: 34 + FCT LGA: 180

### Year to date (week 1 – 9)

Suspected cases		Confirmed cases		Deaths		CFR	
2023	2024	2023	2024	2023	2024	2023	2024
1234	1555	0	0	0	0	0%	0%

Figure 13: Number of suspected and confirmed cases of AFP, Nigeria, weeks 1 – 9, 2023

Figure 14: Location of suspected cases of AFP by State, Nigeria, week 9, 2024



### Key points

- There were 246 suspected cases of AFP reported from 180 LGAs in 34 states and FCT. There was no laboratory confirmed case and no death was recorded.

## National Influenza Sentinel Surveillance

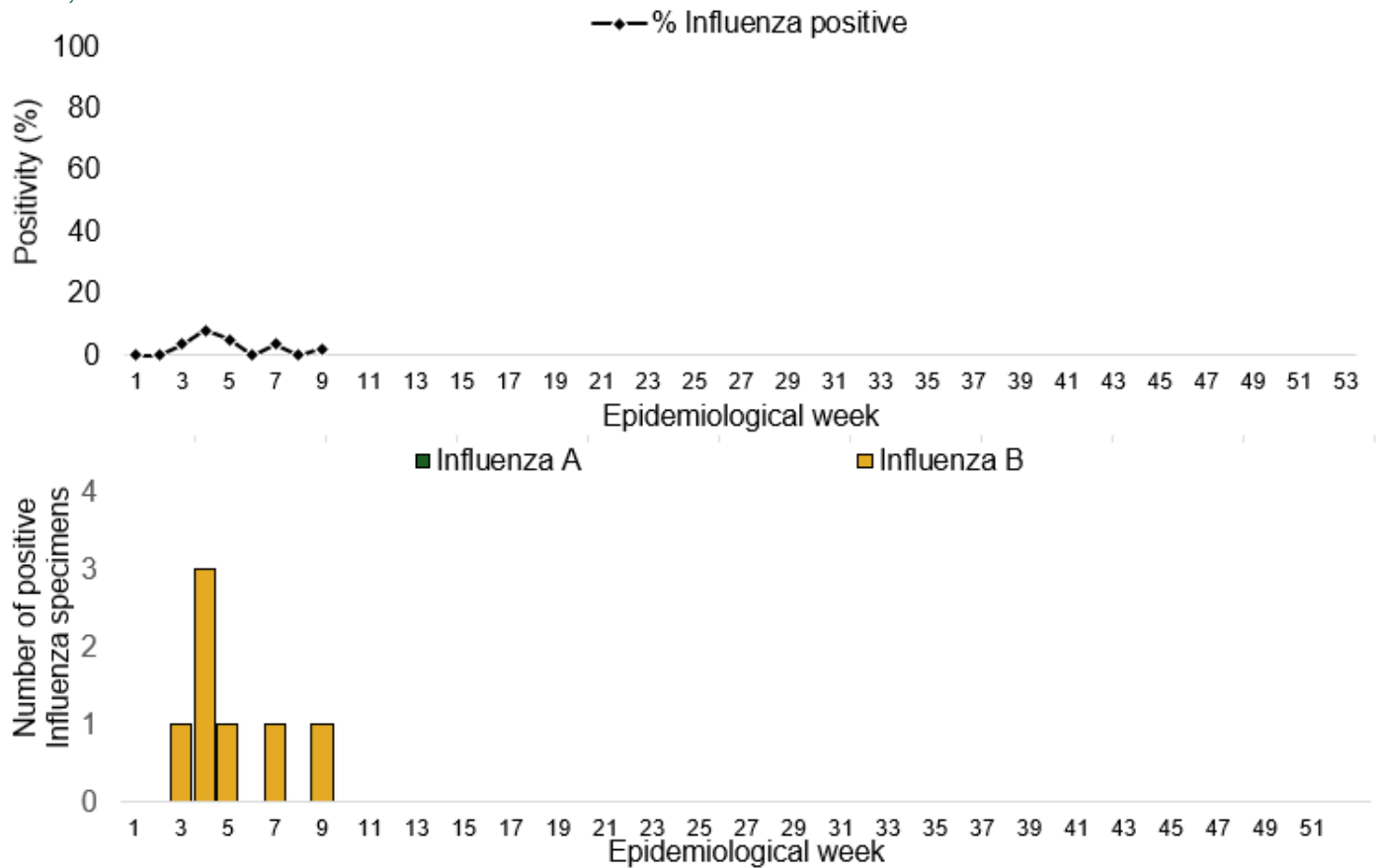
### Week 9

Suspected Cases	Confirmed Cases	Confirmed Case by type	
		Influenza A	Influenza B
45	1	0	1

### Year to date (week 1 – 9)

Suspected cases	Total Confirmed Cases	Confirmed cases by type	
236	7	Influenza A 0	Influenza B 7

Figure 15: Number of influenza positive specimens by type and percentage positive by epidemiological week, 2023.



## Coronavirus Disease (COVID-19)

### Week 9

Suspected cases	Confirmed cases	Deaths	Number of States and LGAs affected
43	43	0	State: 8 + FCT LGA: 22

### Year to date (Week 1- 9)

Suspected cases		Confirmed cases		Deaths		CFR	
2023	2024	2023	2024	2023	2024	2023	2024
284	621	284	621	1	0	0.3%	0%

Figure 16: Epidemic curve of confirmed cases of COVID-19, Nigeria, week 1 - 9, 2024

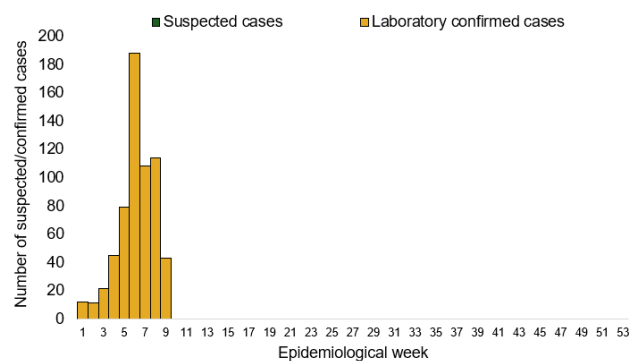
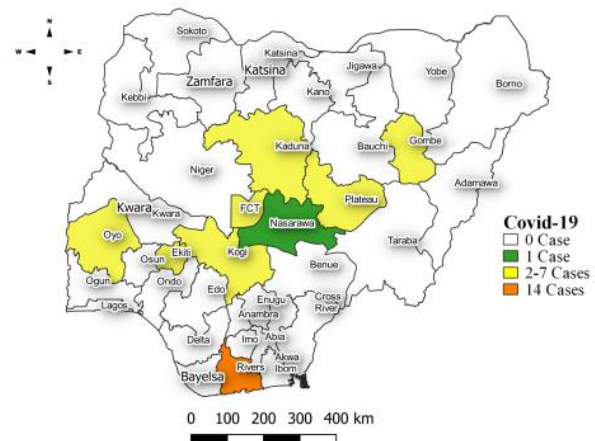


Figure 17: Location of confirmed cases of COVID-19 by State, Nigeria, as at week 9, 2024



### Key points

- There were 43 suspected cases of COVID-19 reported from 22 LGAs in eight states and FCT. There were 43 confirmed cases and no death recorded

### Actions

#### To date:

- Multi-sectoral Public Health Emergency Operation Centres (PHEOC) activated at the National and affected States

## Diphtheria

### Week 9

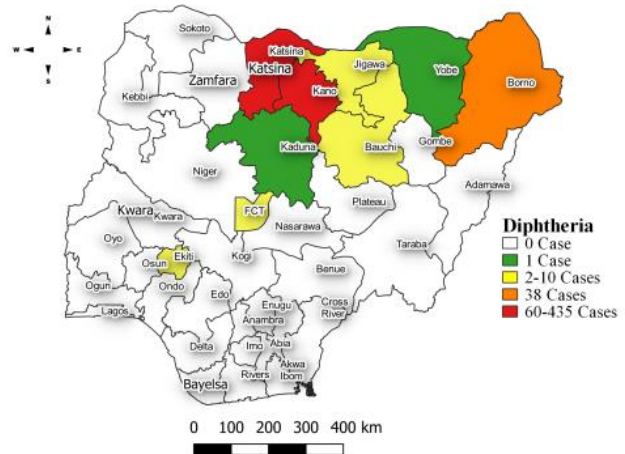
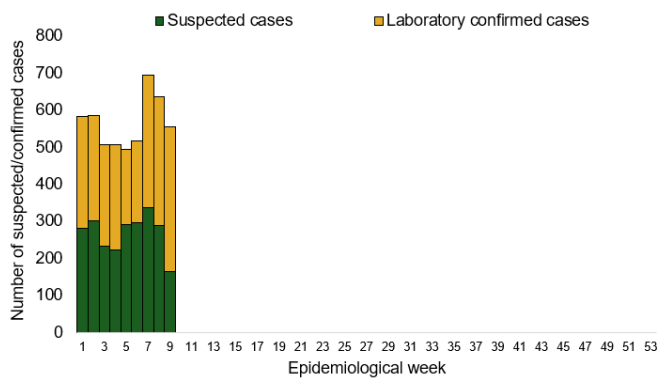
Suspected cases	Confirmed cases	Deaths	Number of States and LGAs affected
555	392	5	State: 8 + FCT LGA: 48

### Year to date (week 1 – 9)

Suspected cases		Confirmed cases		Deaths		CFR	
2023	2024	2023	2024	2023	2024	2023	2024
1080	5069	615	2661	84	47	7.8%	0.9%

Figure 18: Number of suspected and confirmed cases of Diphtheria, Nigeria, weeks 1 – 9, 2024

Figure 19: Location of suspected cases of Diphtheria by State, Nigeria, week 9, 2024



### Key points

- There were 555 suspected cases of Diphtheria reported from 48 LGAs in eight states and FCT. There were 392 confirmed cases and five deaths were recorded.

### Actions

#### To date

- National Diphtheria Technical Working Group (TWG) is monitoring activities in all states.
- Harmonisation of surveillance and laboratory data from across states and laboratories.
- Provision of off-site surveillance support to affected States.

## Event Based Surveillance (EBS)

### Week 9

#### Key points

For the reporting week 9:

- 84 Calls were successfully routed to agents and answered
- 9 calls not routed to agents (Failed call)
- 93 total number of calls (successful and failed)
- 0 number of SMS received
- 0 WhatsApp/live chat messages received
- Percentage of failed to total inbound calls 9.3%
- 4 signals picked and escalated to the States that turned out to be true events: i. ii. iii. iv.
  - Suspected Lassa Fever case, NYSC camp, Adamawa State
  - Suspected CSM cases in Machina LGA, Yobe State
  - Suspected CSM cases with 6 deaths in Zaria, Kaduna State
  - Unknown death in Ogbomosho LGA, Oyo State

For week 1 – 9

- 850 calls were successfully routed to agents and answered
- 55 calls not routed to agents (Failed call)
- 905 total inbound calls recorded
- Percentage of failed to total inbound calls: 6.1%
- 12 Signals picked and escalated

#### Categories of Calls

- General inquiries: 33
- Hoax call and others: 34
- Report of health conditions: 12
- Inquiry on Lassa fever: 10
- Inquiry on malaria vaccine: 0
- Health Declaration form-related queries
- Inquiries on Diphtheria symptoms, treatment, and Vaccine: 1
- Inquiries on yellow fever vaccine: 1
- Inquiries on Lassa fever vaccine: 4
- COVID-19 vaccination inquiries: 0

Figure 20: Number of successful and failed calls, weeks 1 – 9, 2024

