



SITUATION REPORT

Nigeria Centre For Disease Control (NCDC)

www.ncdc.gov.ng

PLOT 800 EBITU UKIWE STREET, JABI ABUJA, NIGERIA. TOLL FREE CALL: 0800-970000-10. E: info@ncdc.gov.ng

[f](#) @NCDCgov

TITLE:	NATIONAL MONTHLY UPDATE FOR CHOLERA
SERIAL NUMBER:	01
Month:	March 2021 (Epi week 01-12)
DATE:	30 March, 2021

HIGHLIGHTS

- Eight states have reported suspected cholera cases in 2021. These are Benue, Delta, Zamfara, Gombe, Bayelsa, Kogi, Sokoto and Nasarawa
- The national multi-agency cholera Technical Working Group (TWG) at Nigeria Centre for Disease Control (NCDC) continues to monitor the NATIONAL situation

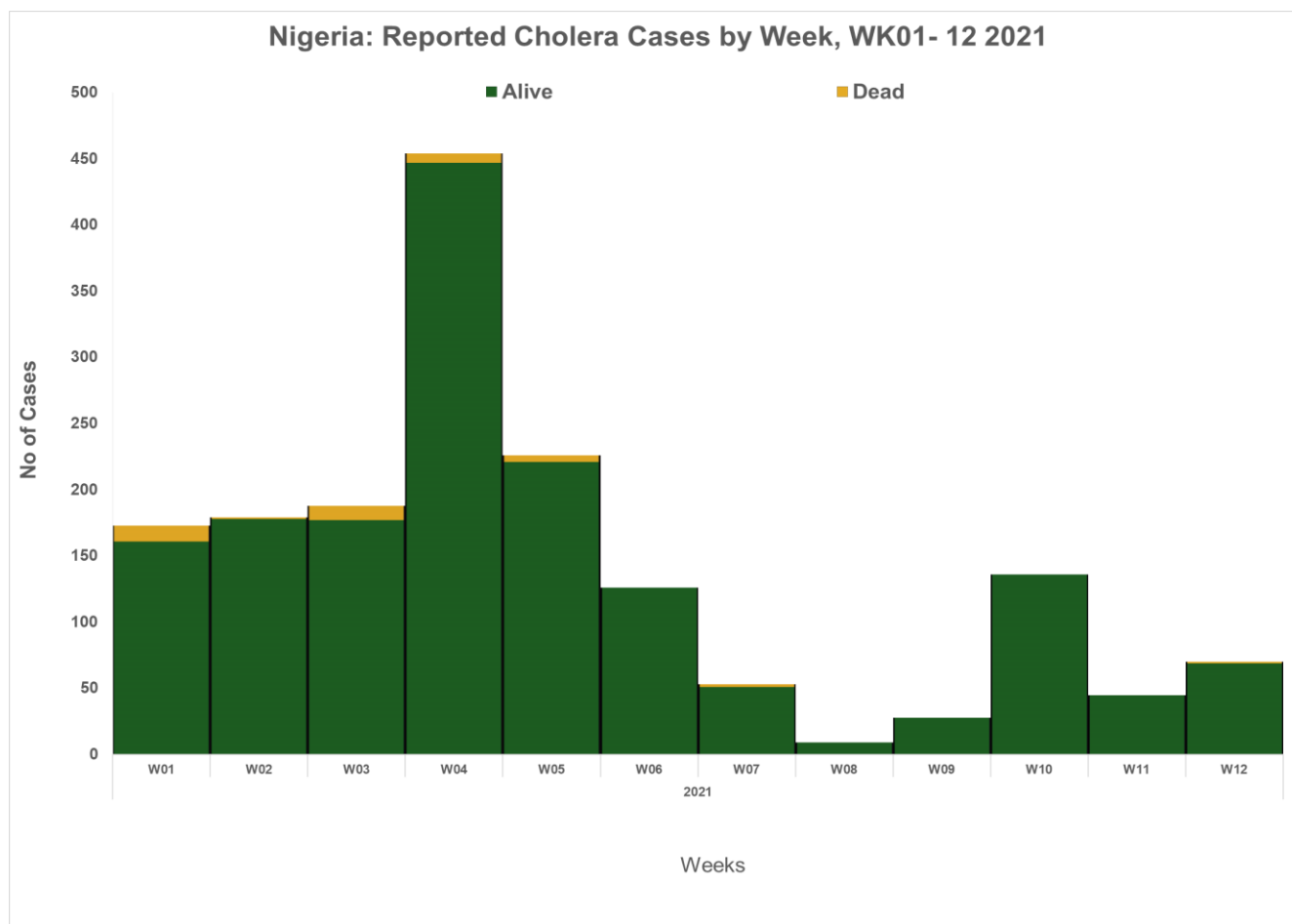
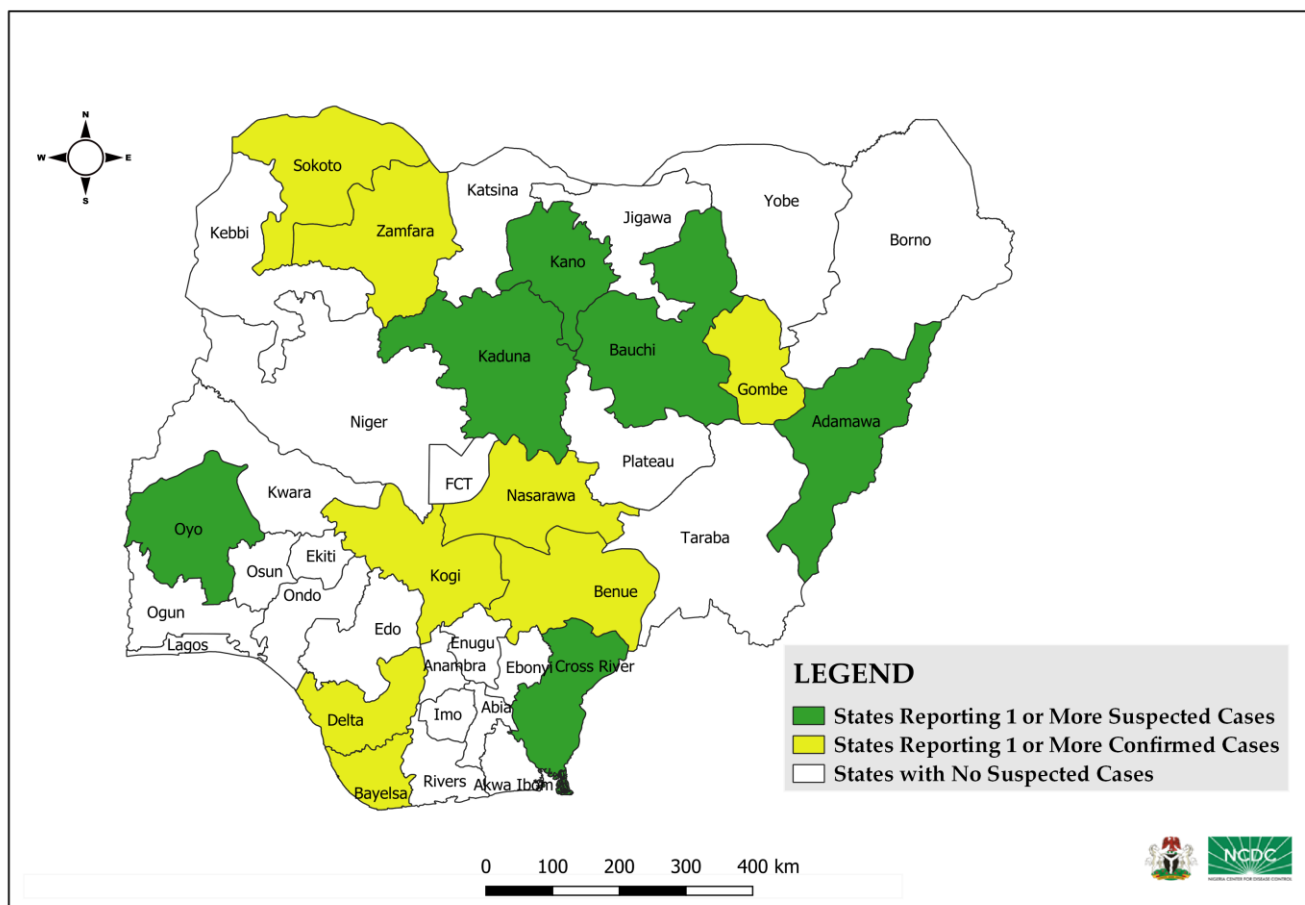
Epi-Summary

- As at **March 28th, 2021**, a total of **1,746 suspected cases including 50 deaths (CFR = 2.9%)** have been reported from eight states (Benue, Delta, Zamfara, Gombe, Bayelsa, Kogi, Sokoto and Nasarawa) since the beginning of 2021
- Of the confirmed cases, **63.2% are aged 5 - 14 years**
- Of all suspected cases, **48% are females and 52% are males**
- There has been a **gradual increase in the number of new cases** in the last two weeks. **Zamfara State accounts for about 100% of cases reported** in the last two weeks
- A total of 75 samples were collected of which 49 were positive (38 RDT and 11 culture). **The test positivity rate (TPR) for laboratory confirmation by culture is 14.7%**

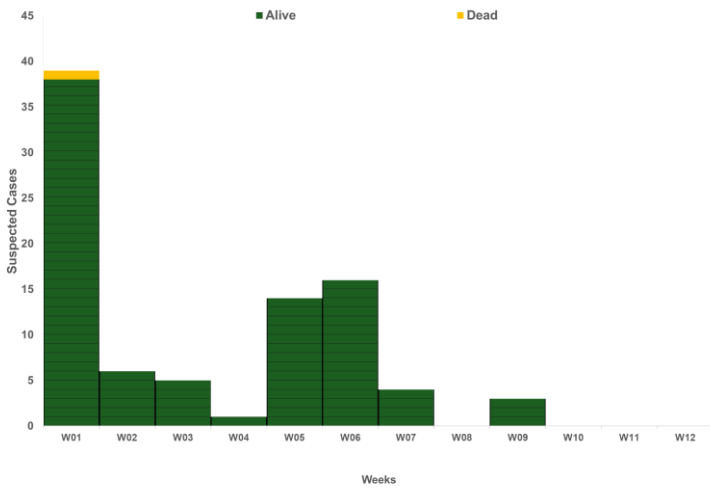
Table 1: Reported suspected cholera cases by state Week 01 – 12, 2021

S/N	State	LGAs reporting	Total cases reported	Total deaths	CFR (%)	Total RDT positive	Total culture positive
1	Bayelsa	2	58	6	10.3	2	0
2	Benue	10	556	6	1.1	19	4
3	Delta	6	427	22	5.2	0	1
4	Gombe	1	128	0	0.0	5	0
5	Kogi	1	12	4	33.3	0	0
6	Nasarawa	3	114	9	7.9	0	2
7	Sokoto	2	313	0	0.0	0	4
8	Zamfara	1	138	3	2.2	12	0
		26	1746	50	2.9	38	11

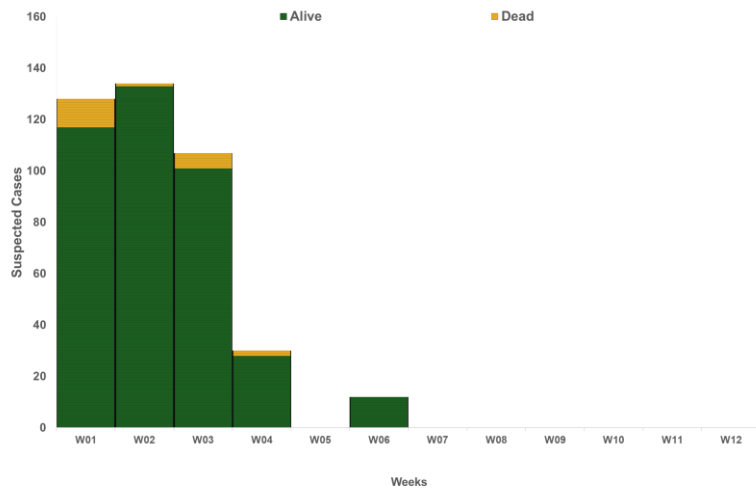
Figure 1: Map of Nigeria showing states affected by cholera, Week 01 – 12, 2021



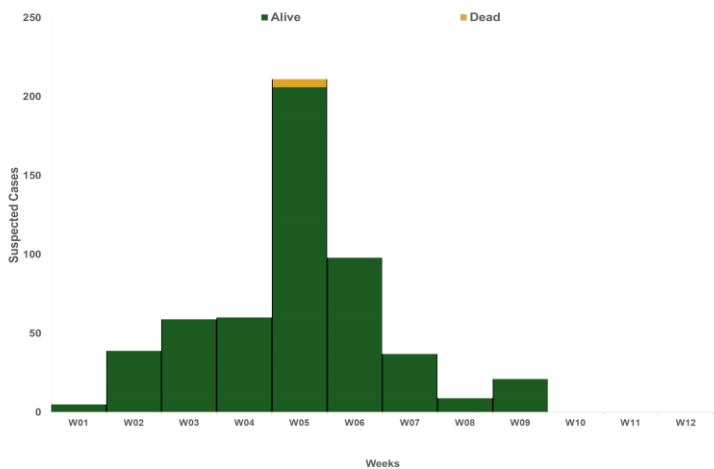
Nasarawa: Reported Cholera Cases by Week WK01- 12 2021



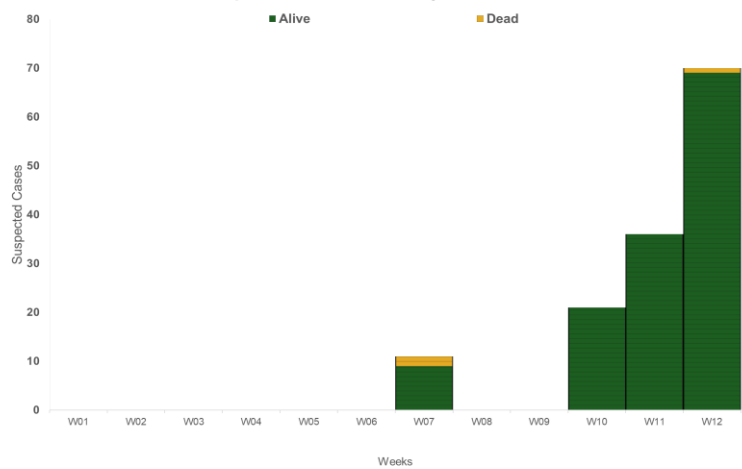
Delta: Reported Cholera Cases by Week WK01- 12 2021



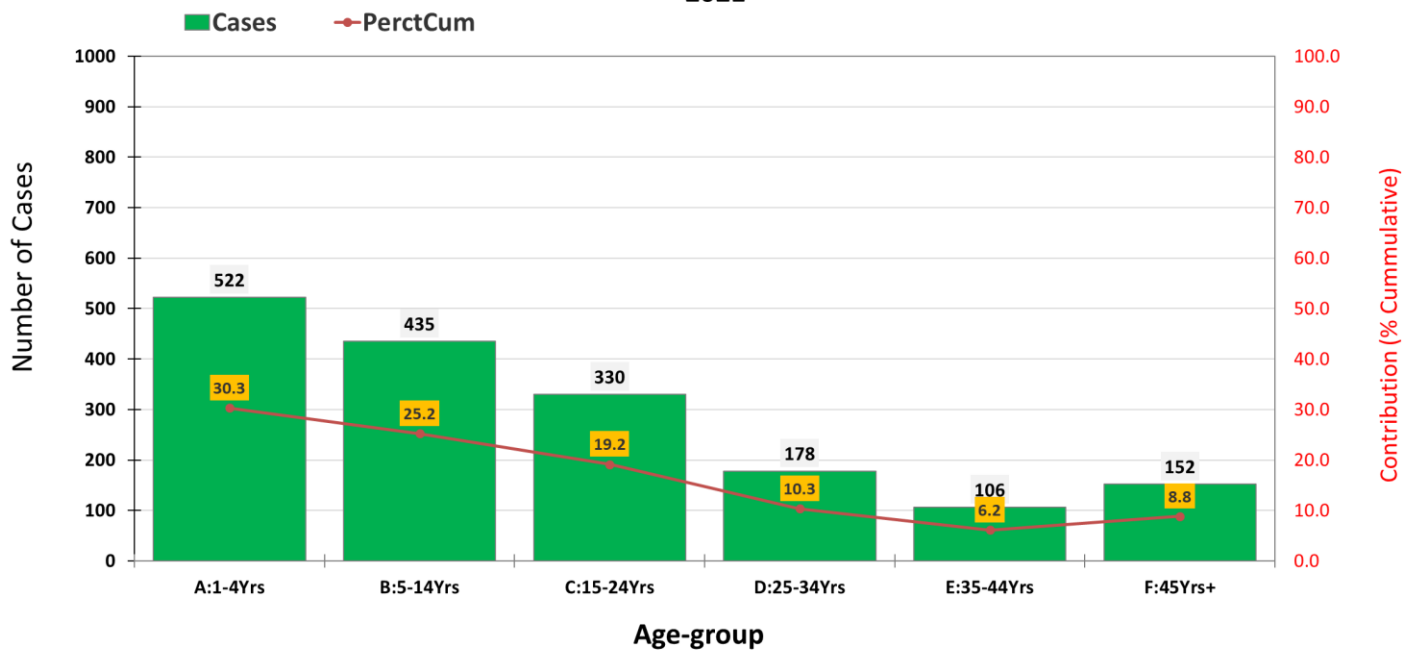
Benue: Reported Cholera Cases by Week WK01- 12 2021



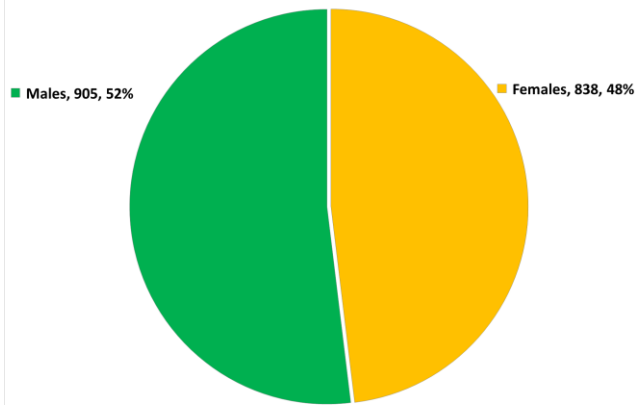
Zamfara: Reported Cholera Cases by Week WK01- 12 2021



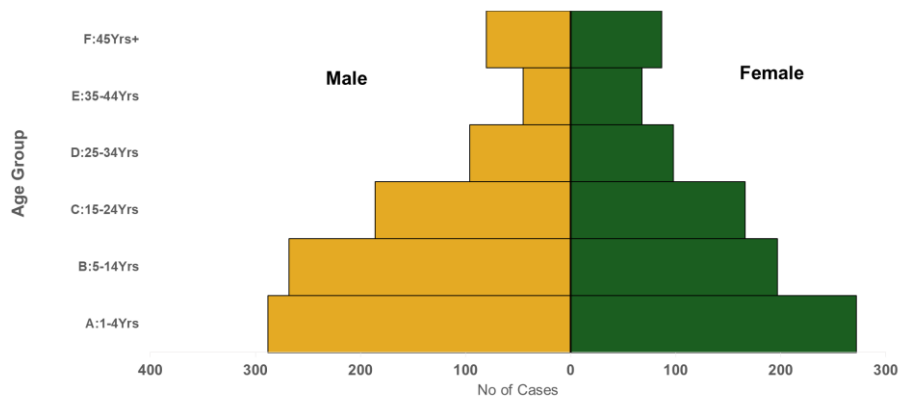
Nigeria: Suspected Cholera Cases by Age-group and Percentage Contribution, WK01 - WK12 2021



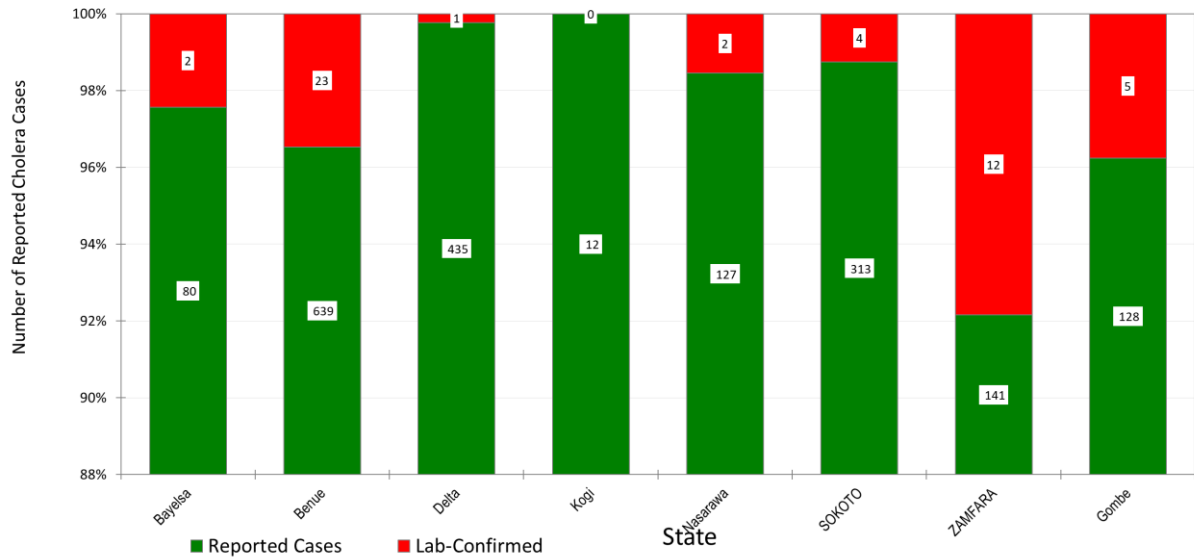
Nigeria: Reported Cholera Cases By Sex, WK01- 12, 2021



Age-Sex Distribution of Reported Cholera Cases WK 01- 12, 2021



Nigeria: Proportion of Reported Cholera Cases with Lab-Confirmation (RDT/Culture), WK01-12 2021



RESPONSE ACTIVITIES

Coordination

- Response is being coordinated by NCDC through the National Technical Working Group (TWG) in collaboration with National Primary Healthcare Development Agency (NPHCDA), Federal Ministry of Water Resources (FMWR) and partners
- State level Emergency Operation Centres (EOCs) were activated in Nasarawa, Benue and Gombe. Currently, Zamfara EOC is in response mode
- National Rapid Response Teams (RRTs) with response commodities were deployed to support the state response
- Developed the 2021 Annual Cholera Preparedness and Response Workplan

Surveillance

- Ongoing surveillance in all states through the routine Integrated Disease Surveillance and Response (IDSR) and Event Based Surveillance (EBS) channels

WASH

- Hygiene promotion, provision of safe water and sensitisation on dangers of open defecation ongoing in high-risk communities by WASH sector partners and Community Health Volunteers in the affected states

Laboratory surveillance

- 160 packs of Crystal VC RDT Kits were supplied by WHO to support the ongoing state response
- Samples are being tested with RDTs in the field and confirmed by stool culture in some states and the national reference laboratories at Abuja and Lagos

Risk communications

- Cholera jingles are being aired in English and local languages
- Community social mobilisation, distribution of Information, Education and Communication (IEC) materials and awareness campaigns ongoing in affected communities

Logistics and Vaccination

- The first round of Oral Cholera Vaccination (OCV) campaigns was conducted in the affected communities of Agatu, Guma, Gwer West and Makurdi LGAs of Benue State. 40,000 remaining doses of vaccines from the 2018 reactive and preventive campaigns supplied by the GTFCC was used

CHALLENGES

- Inadequate health facility infrastructure for management of patients in most affected LGAs
- Difficulty in accessing some communities due to terrains
- Open defecation in the affected communities
- Lack of portable drinking water in some areas
- Inadequate vaccines to cover all LGAs, wards and settlements with cholera outbreaks
- Multiple outbreaks with limited personnel and resources for response
- Inadequate health facility infrastructure and cholera commodities for management of patients
- Inadequate resources to conduct larger campaigns for the second round and preventive vaccinations in other states currently undergoing outbreak

NEXT STEPS

- Maintain communication with states for data reporting
- Review the existing LGA cholera hotspots mapping developed in 2018
- Conduct the 2021 cholera risk assessment exercise
- Make cholera vaccination request to International Coordinating Group (ICG) for reactive cholera vaccination and Global Task Force on Cholera Control (GTFCC) for preventive cholera vaccination
- Advocate to State Governments to increase funding in WASH infrastructures
- Procure and pre-position response commodities
- Build capacity for sample collection, transportation and laboratory diagnosis