

COVID-19 SITUATION REPORT

SITUATION REPORT 148

Saturday, 25th July 2020



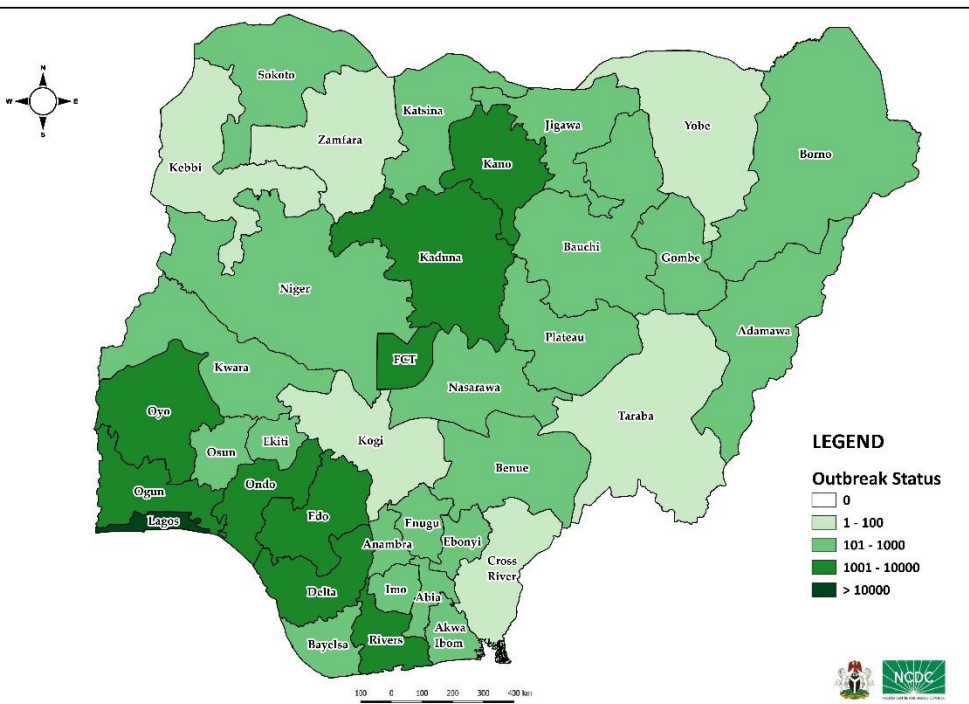
DATA AS REPORTED AND ACCURATE BY NCDC AS AT MIDNIGHT 25TH JULY 2020

HIGHLIGHTS

- Four hundred and thirty-eight (**438**) confirmed cases were reported in the last 24 hours from **23** states – Lagos (123), Kaduna (50), Rivers (40), Edo (37), Adamawa (25), Oyo (20), Nasarawa (16), Enugu (15), Osun (15), FCT (14), Ekiti (13), Ondo (13), Ebonyi (11), Katsina (10), Abia (9), Delta (8), Kwara (4), Bauchi (3), Cross River (3), Kano (3), Ogun (3), Yobe (2) and Sokoto (1).
- Three hundred and eighty-nine (**389**) cases were discharged in the last 24 hours in **13** states – Ondo (100), Rivers (61), Kaduna (38), Abia (35), Edo (34), Ogun (34), Bayelsa (25), Osun (19), FCT (16), Bauchi (8), Ekiti (8), Katsina (8) and Ebonyi (3).
- Eleven (**11**) deaths were recorded in the last 24 hours in **four** states – Edo (5), Niger (3), Rivers (2) and Ebonyi (1).
- All **36** states in Nigeria, and the FCT, have reported a confirmed case.

STATE OF THE NATION

Figure 1: Map of Nigeria showing 36 states and FCT affected by COVID-19



SITUATION UPDATES

Total (New in the last 24 hours)

SAMPLES TESTED

262,579 (3,063)

CONFIRMED CASES

39,977 (438)

AFFECTED STATES INCLUDING FCT

37

DISCHARGED CASES

16,948 (389)

CONFIRMED FATALITIES

856 (11) – 2.1% CFR

DEMOGRAPHICS

MALE – 25,781 (64%)

FEMALE – 14,196 (36%)

MOST AFFECTED AGE GROUP

31 - 40 (25%)

PERSONS OF INTEREST

11,077 (Total)

10,908 (98.5% - Exceeded Follow Up)

PROVENANCE

TRAVEL HISTORY – 719 (2%)

CONTACTS – 9,905 (25%)

UNKNOWN EXPOSURE – 29,353 (73%)

GLOBAL UPDATES

TOTAL NUMBER OF CASES

15,581,009 (635,173 deaths)

COUNTRIES & TERRITORIES AFFECTED*

213

*Excluding the 2 International Conveyance

GENERAL FACT SHEET – DATA AS AT 25TH JULY 2020

Table 1: States with reported laboratory-confirmed COVID-19 cases, recoveries, deaths and days since last reported case

STATES	CONFIRMED CASES		DISCHARGED CASES		DEATHS		TOTAL ACTIVE CASES	DAYS SINCE LAST REPORTED CASE
	CUMULATIVE	NEW	CUMULATIVE	NEW	CUMULATIVE	NEW		
Lagos	14,300	123	2,087	0	192	0	12,021	0
FCT	3,451	14	1,022	16	41	0	2,388	0
Oyo	2,517	20	1,148	0	24	0	1,345	0
Edo	2,165	37	1,394	34	77	5	694	0
Rivers	1,640	40	1,142	61	52	2	446	0
Delta	1,464	8	634	0	40	0	790	0
Kano	1,455	3	1,190	0	53	0	212	0
Kaduna	1,349	50	1,032	38	12	0	305	0
Ogun	1,244	3	1,007	34	23	0	214	0
Ondo	1,043	13	348	100	22	0	673	0
Plateau	780	0	430	0	19	0	331	2
Ebonyi	759	11	580	3	24	1	155	0
Enugu	741	15	425	0	17	0	299	0
Katsina	733	10	449	8	23	0	261	0
Kwara	711	4	202	0	16	0	493	0
Borno	609	0	522	0	35	0	52	1
Gombe	558	0	521	0	23	0	14	5
Bauchi	538	3	516	8	13	0	9	0
Abia	536	9	426	35	4	0	106	0
Imo	465	0	108	0	9	0	348	1
Osun	435	15	214	19	10	0	211	0
Bayelsa	326	0	251	25	21	0	54	3
Jigawa	322	0	308	0	11	0	3	9
Nasarawa	308	16	113	0	8	0	187	0
Benue	294	0	53	0	6	0	235	5
Akwa Ibom	208	0	121	0	7	0	80	1
Niger	167	0	133	0	12	3	22	1
Sokoto	154	1	137	0	16	0	1	0
Adamawa	140	25	85	0	9	0	46	0
Anambra	132	0	75	0	12	0	45	5
Ekiti	104	13	55	8	2	0	47	0
Kebbi	90	0	79	0	7	0	4	4
Zamfara	77	0	71	0	5	0	1	7
Yobe	66	2	53	0	8	0	5	0
Taraba	54	0	11	0	0	0	43	4
Cross River	37	3	3	0	1	0	33	0
Kogi	5	0	3	0	2	0	0	22
Total	39,977	438	16,948	389	856	11	22,173	

States, including FCT, are arranged in descending order by number of total confirmed cases and then alphabetical order

SELECTED CHARTS

Figure 2: Daily Epidemic Curve of Confirmed Cases (WK9 – WK30)

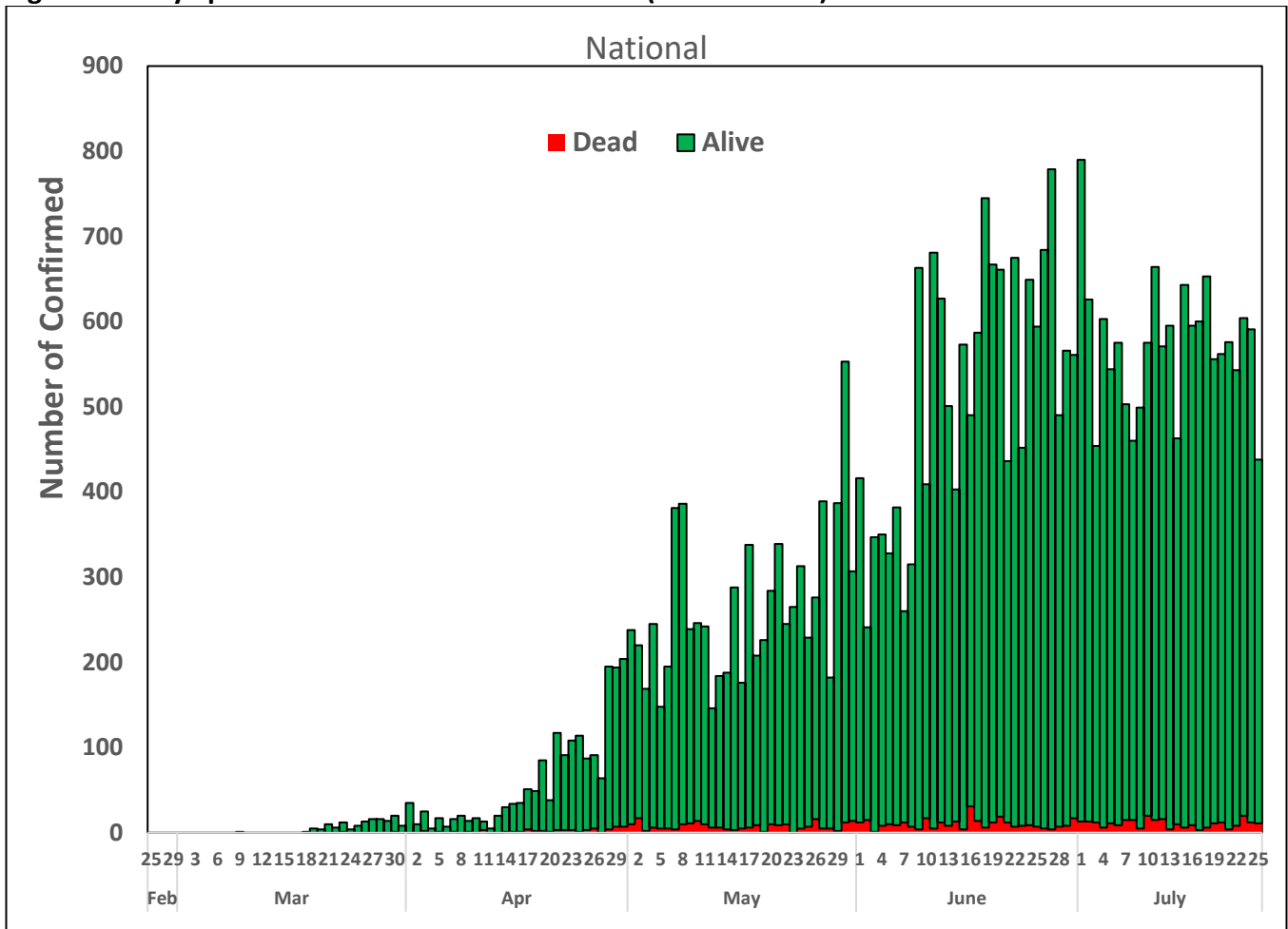
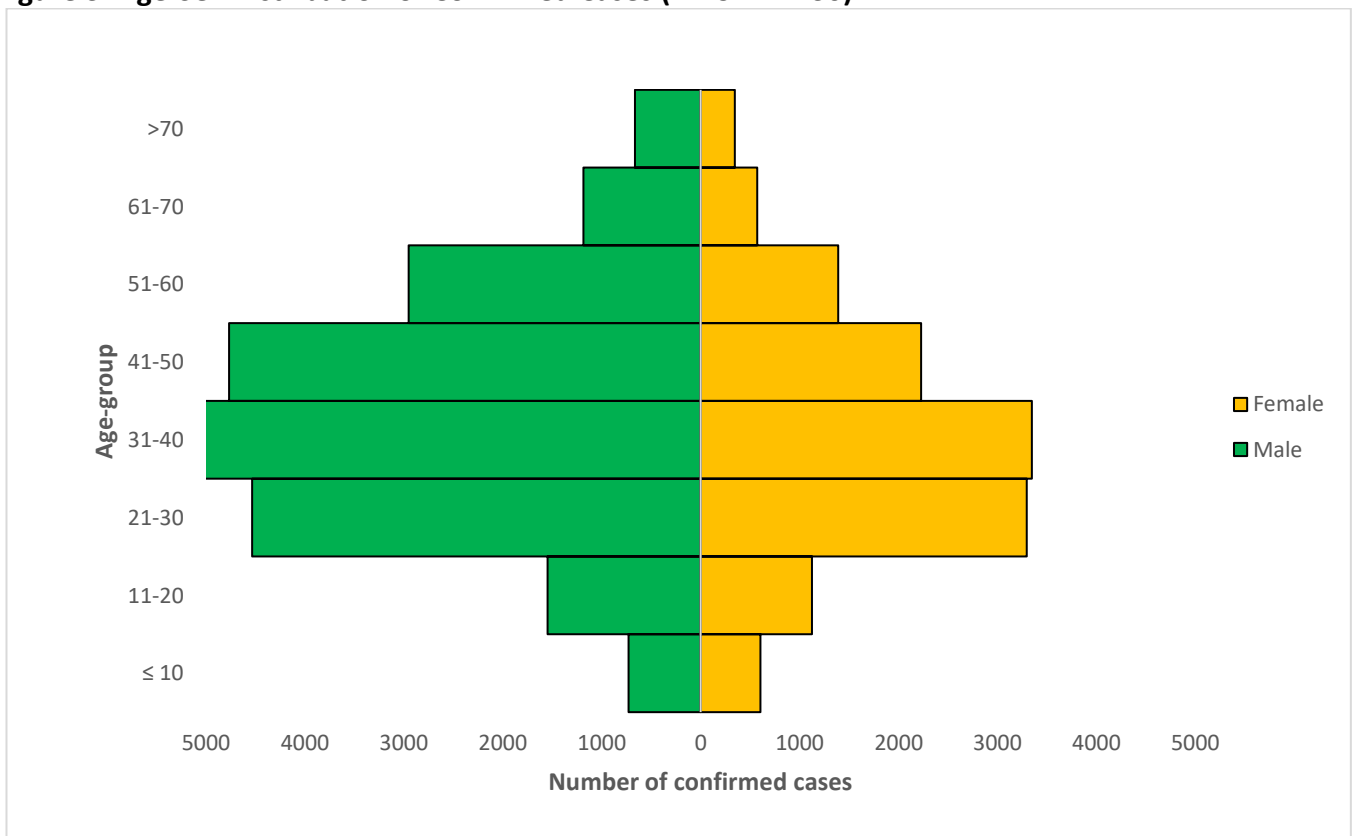


Figure 3: Age-Sex Distribution of Confirmed Cases (WK9 – WK30)



PREPAREDNESS

Since the confirmation of the first case on 27th February 2020, the NCDC has released advisories and statements to help Nigerians and affected groups in particular to respond to the pandemic

- NCDC has launched an online course on [Infection, Prevention and Control \(IPC\) for COVID-19](#) NCDC eLearning platform
- Ahead of forthcoming elections in the country, NCDC has issued [Guidelines for Conducting Elections During the COVID-19 Outbreak in Nigeria](#).
- To protect our elders, and those with pre-existing medical conditions, NCDC has issued an [Advisory for Vulnerable Groups](#).
- NCDC has released [guidelines on the re-opening of places for worship](#).
- NCDC has released [Strategies to Improve Surveillance for COVID-19 Guidance for States](#)
- The Nigeria Police Force has released COVID-19 operational guidelines for the [Police and other Law Enforcement Agencies in Nigeria](#)
- Guidelines have been issued for the [safe transportation of remains of persons suspected or confirmed to have died of COVID-19](#)
- Information on diagnostics of the COVID-19 virus can be found in our [detailed FAQ document](#).
- To increase our testing capacity, NCDC has issued guidelines for the [integration of private labs](#).
- Guidelines for [businesses and employers](#) have been updated.
- NCDC has updated its [case definition](#) , [community case definition](#) and [case management guide](#).
- NCDC releases periodic [public health advisories](#) to Nigerians on the COVID-19 disease.
- To adhere to post-lockdown measures, NCDC has released an [advisory on the use of face masks](#), as well as information on the [Use of Cloth face masks](#) and [how to make your cloth face masks](#).
- NCDC has released guidelines for the [management of pregnant women and nursing mothers](#) during the pandemic.
- To address burials of loved ones who die from COVID-19, guidelines have been issued to advise on the [management of dead bodies](#).
- For health centres managing cases, the following documents have been released- a guideline for the [Rational Use of Personal Protective Equipment in the care of COVID-19 cases](#).
- As part of plans to increase the testing capacity of the country, the NCDC published a [National Strategy to Scale Up Access to Coronavirus Disease Testing in Nigeria](#) document.
- The Presidential Task Force has published policies and announcements on COVID-19 [available on the website of the Presidency](#) – including presidential addresses, task force updates and information on livelihood and economic support.

RESPONSE

On 28th February 2020, a multi-sectoral Emergency Operations Centre (EOC) was activated at Level 3 – the highest emergency level in Nigeria –led by NCDC in close coordination with the State Public Health EOCs (PHEOC).

- **Reviewed Standard Operating Procedure (SOP) for sample packaging and transport to enhance sample management**
- **Assessed University of Calabar Teaching Hospital (UCTH) treatment centre and laboratory in Cross River State to improve Infection Prevention and Control (IPC) practices**
- **Provided technical assistance and recommendations on instituting IPC structures at the new Plateau State Treatment centre**
- **Released an advisory on the use of dexamethasone for the management of severe and critical COVID-19 cases**
- **Deployed laboratory consumables and IPC materials to 31 laboratories in the COVID-19 laboratory network**
- **Ongoing distribution of configured tablets to States for supply chain data management**
- **Supported the training of Red Cross volunteers in 23 states**
- **Engaged relevant stakeholders on Community Health Workers (CWP) project organised by partners**

- Ongoing roll out of Surveillance Outbreak Response Management and Analysis (SORMAS) tool in Jigawa and Borno States.
- Received a total of 76 Persons of Interest (POIs) /returnees from- China (45), Ghana (31) on 23rd July 2020 in the FCT
- All POIs/returnees were received, screened and given the travellers kit on arrival at the Nnamdi Azikiwe International Airport Abuja (NAIA)
- All returnees were issued COVID-19 test appointment
- Ongoing assessment of laboratories in Kebbi and Taraba States
- Conducted a 2-Day virtual training on Biosafety & Biosecurity supported by the Islamic Development Bank
- Finalised arrangements on Orange Network workshop on Infection Prevention and Control for focal persons from 33 Health facilities
- Conducted training for 50 TB/HIV/ COVID-19 coordinators on Infection Prevention and Control (IPC) in Kano State
- Conducted mortality review with Lagos University Teaching Hospital to strengthen case management
- Closely monitoring progress among Federal Tertiary Hospitals to create holding bays for suspect cases
- Deployed response materials, commodities and Personal Protective Equipment (PPE) and commodities to South East States: Abia, Anambra, Ebonyi, Enugu and Imo
- Conducted a meeting on risk communication with the Association of Local Governments of Nigeria (ALGON)
- All education materials can be found via www.covid19.ncdc.gov.ng