

# COVID-19 SITUATION REPORT

## SITUATION REPORT 198

Sunday, 13<sup>th</sup> September 2020



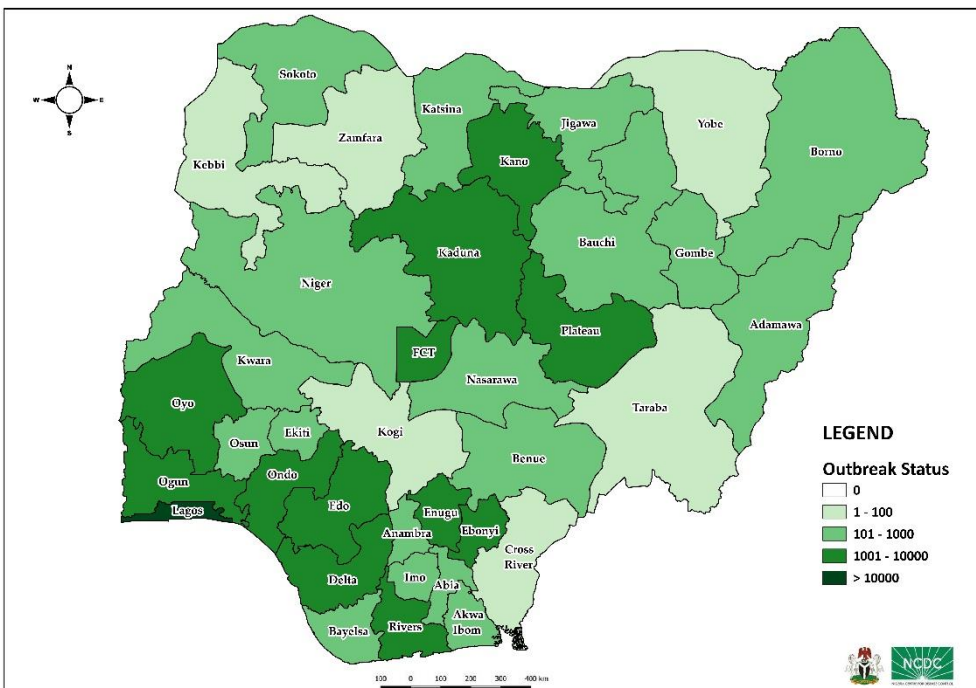
DATA AS REPORTED AND ACCURATE BY NCDC AS AT MIDNIGHT 13<sup>th</sup> SEPTEMBER 2020

### HIGHLIGHTS

- Seventy-nine (**79**) confirmed cases were reported in the last 24 hours from **13** states – Lagos (30), Kaduna (17), Ogun (7), Anambra (5), Kano (4), Akwa Ibom (3), FCT (3), Katsina (3), Oyo (2), Rivers (2), Delta (1), Ondo (1) and Plateau (1).
- Sixty-four (**64**) discharges have been reported in the last 24 hours in **ten** states – Plateau (24), Delta (13), Ogun (8), Akwa Ibom (4), FCT (4), Kaduna (4), Rivers (3), Bauchi (2), Ekiti (1) and Osun (1).
- Four** deaths were reported in the last 24 hours in **four** states – Delta (1), Kaduna (1), Ogun (1) and Ondo (1).
- All **36** states in Nigeria, and the FCT, have reported a confirmed case.

### STATE OF THE NATION

Figure 1: Map of Nigeria showing 36 states and FCT affected by COVID-19



### SITUATION UPDATES

Total (New in the last 24 hours)

SAMPLES TESTED

**442,075 (1,827)**

CONFIRMED CASES

**56,256 (79)**

AFFECTED STATES INCLUDING FCT

**37**

DISCHARGED CASES

**44,152 (64)**

CONFIRMED FATALITIES

**1,082 (4) – 1.9% CFR**

DEMOGRAPHICS

MALE – 35,666 (63%)

FEMALE – 20,590 (37%)

MOST AFFECTED AGE GROUP

31 - 40 (25%)

PERSONS OF INTEREST

**11,777 (Total)**

**11,675 (99.1% - Exceeded Follow Up)**

PROVENANCE

TRAVEL HISTORY – 850 (2%)

CONTACTS – 14,113 (25%)

UNKNOWN EXPOSURE – 41,293 (73%)

GLOBAL UPDATES

TOTAL NUMBER OF CASES

**28,637,952 (917,417 deaths)**

COUNTRIES & TERRITORIES AFFECTED

**216\***

\*Excluding the 2 International Conveyance

# GENERAL FACT SHEET – DATA AS AT 13<sup>th</sup> SEPTEMBER 2020

Table 1: States with reported laboratory-confirmed COVID-19 cases, recoveries, deaths and days since last reported case

| STATES       | CONFIRMED CASES |           | DISCHARGED CASES |           | DEATHS       |          | TOTAL ACTIVE CASES | DAYS SINCE LAST REPORTED CASE |
|--------------|-----------------|-----------|------------------|-----------|--------------|----------|--------------------|-------------------------------|
|              | TOTAL           | NEW       | TOTAL            | NEW       | TOTAL        | NEW      |                    |                               |
| Lagos        | 18,611          | 30        | 15,245           | 0         | 203          | 0        | 3,163              | 0                             |
| FCT          | 5,447           | 3         | 1,664            | 4         | 75           | 0        | 3,708              | 0                             |
| Oyo          | 3,221           | 2         | 2,076            | 0         | 39           | 0        | 1,106              | 0                             |
| Plateau      | 3,098           | 1         | 2,010            | 24        | 31           | 0        | 1,057              | 0                             |
| Edo          | 2,610           | 0         | 2,420            | 0         | 100          | 0        | 90                 | 1                             |
| Kaduna       | 2,279           | 17        | 2,161            | 4         | 33           | 1        | 85                 | 0                             |
| Rivers       | 2,207           | 2         | 2,116            | 3         | 59           | 0        | 32                 | 0                             |
| Delta        | 1,791           | 1         | 1,629            | 13        | 49           | 1        | 113                | 0                             |
| Ogun         | 1,739           | 7         | 1,675            | 8         | 28           | 1        | 36                 | 0                             |
| Kano         | 1,732           | 4         | 1,626            | 0         | 54           | 0        | 52                 | 0                             |
| Ondo         | 1,584           | 1         | 1,490            | 0         | 35           | 1        | 59                 | 0                             |
| Enugu        | 1,223           | 0         | 1,088            | 0         | 21           | 0        | 114                | 2                             |
| Ebonyi       | 1,034           | 0         | 997              | 0         | 30           | 0        | 7                  | 4                             |
| Kwara        | 992             | 0         | 794              | 0         | 25           | 0        | 173                | 2                             |
| Katsina      | 840             | 3         | 457              | 0         | 24           | 0        | 359                | 0                             |
| Abia         | 828             | 0         | 771              | 0         | 8            | 0        | 49                 | 1                             |
| Osun         | 804             | 0         | 762              | 1         | 17           | 0        | 25                 | 3                             |
| Gombe        | 746             | 0         | 643              | 0         | 23           | 0        | 80                 | 5                             |
| Borno        | 741             | 0         | 703              | 0         | 36           | 0        | 2                  | 13                            |
| Bauchi       | 679             | 0         | 648              | 2         | 14           | 0        | 17                 | 2                             |
| Imo          | 546             | 0         | 212              | 0         | 12           | 0        | 322                | 2                             |
| Benue        | 467             | 0         | 401              | 0         | 9            | 0        | 57                 | 1                             |
| Nasarawa     | 446             | 0         | 298              | 0         | 12           | 0        | 136                | 3                             |
| Bayelsa      | 393             | 0         | 367              | 0         | 21           | 0        | 5                  | 3                             |
| Jigawa       | 322             | 0         | 308              | 0         | 11           | 0        | 3                  | 59                            |
| Ekiti        | 300             | 0         | 255              | 1         | 5            | 0        | 40                 | 1                             |
| Akwa Ibom    | 286             | 3         | 251              | 4         | 8            | 0        | 27                 | 0                             |
| Niger        | 244             | 0         | 216              | 0         | 12           | 0        | 16                 | 9                             |
| Anambra      | 231             | 5         | 182              | 0         | 19           | 0        | 30                 | 0                             |
| Adamawa      | 230             | 0         | 180              | 0         | 15           | 0        | 35                 | 4                             |
| Sokoto       | 159             | 0         | 142              | 0         | 17           | 0        | 0                  | 13                            |
| Taraba       | 95              | 0         | 73               | 0         | 6            | 0        | 16                 | 2                             |
| Kebbi        | 93              | 0         | 84               | 0         | 8            | 0        | 1                  | 16                            |
| Cross River  | 83              | 0         | 73               | 0         | 8            | 0        | 2                  | 10                            |
| Zamfara      | 78              | 0         | 73               | 0         | 5            | 0        | 0                  | 24                            |
| Yobe         | 72              | 0         | 59               | 0         | 8            | 0        | 5                  | 1                             |
| Kogi         | 5               | 0         | 3                | 0         | 2            | 0        | 0                  | 72                            |
| <b>Total</b> | <b>56,256</b>   | <b>79</b> | <b>44,152</b>    | <b>64</b> | <b>1,082</b> | <b>4</b> | <b>11,022</b>      |                               |

States, including FCT, are arranged in descending order by number of total confirmed cases and then alphabetical order

# SELECTED CHARTS

Figure 2: Daily Epidemic Curve of Confirmed Cases (WK9 – WK37)

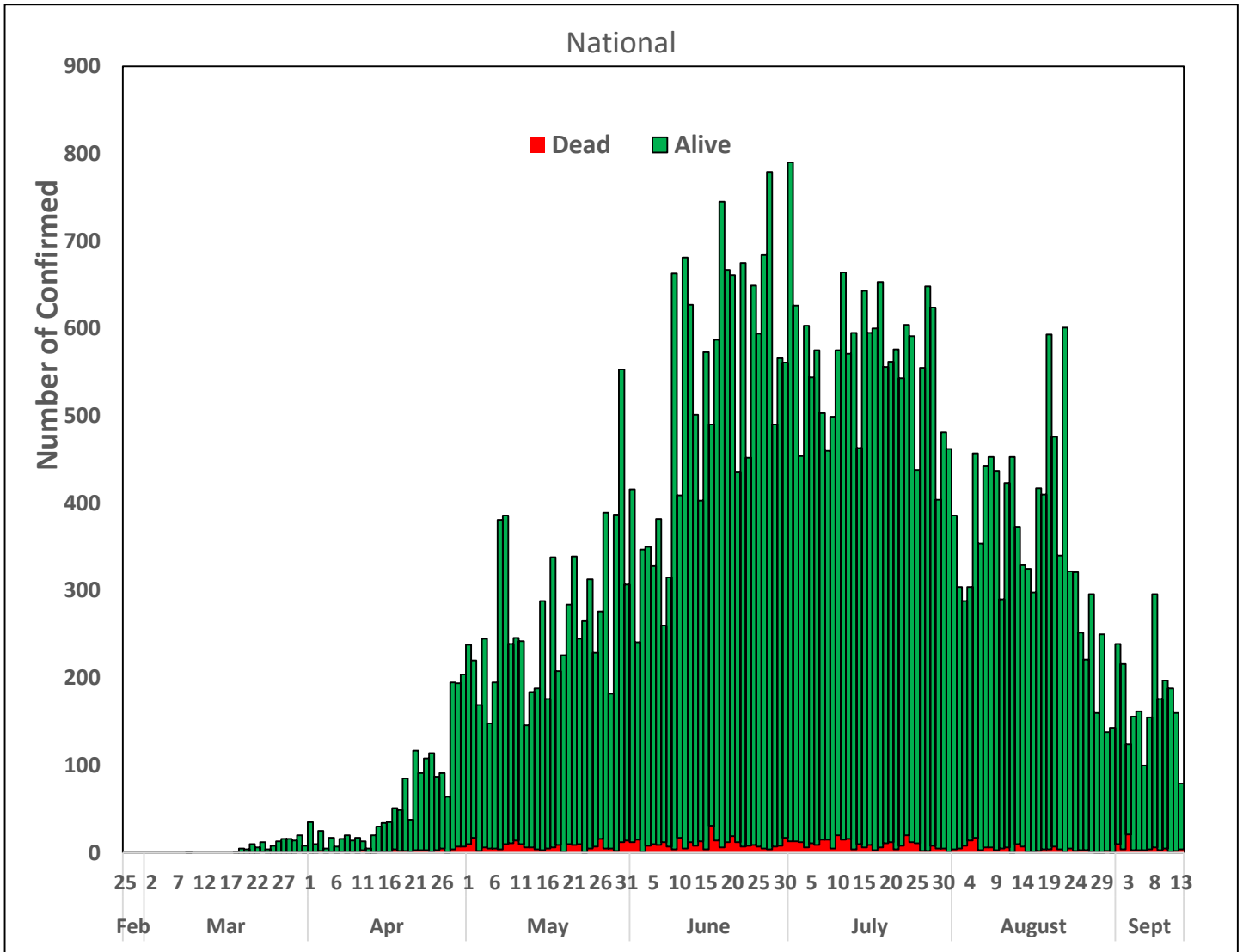
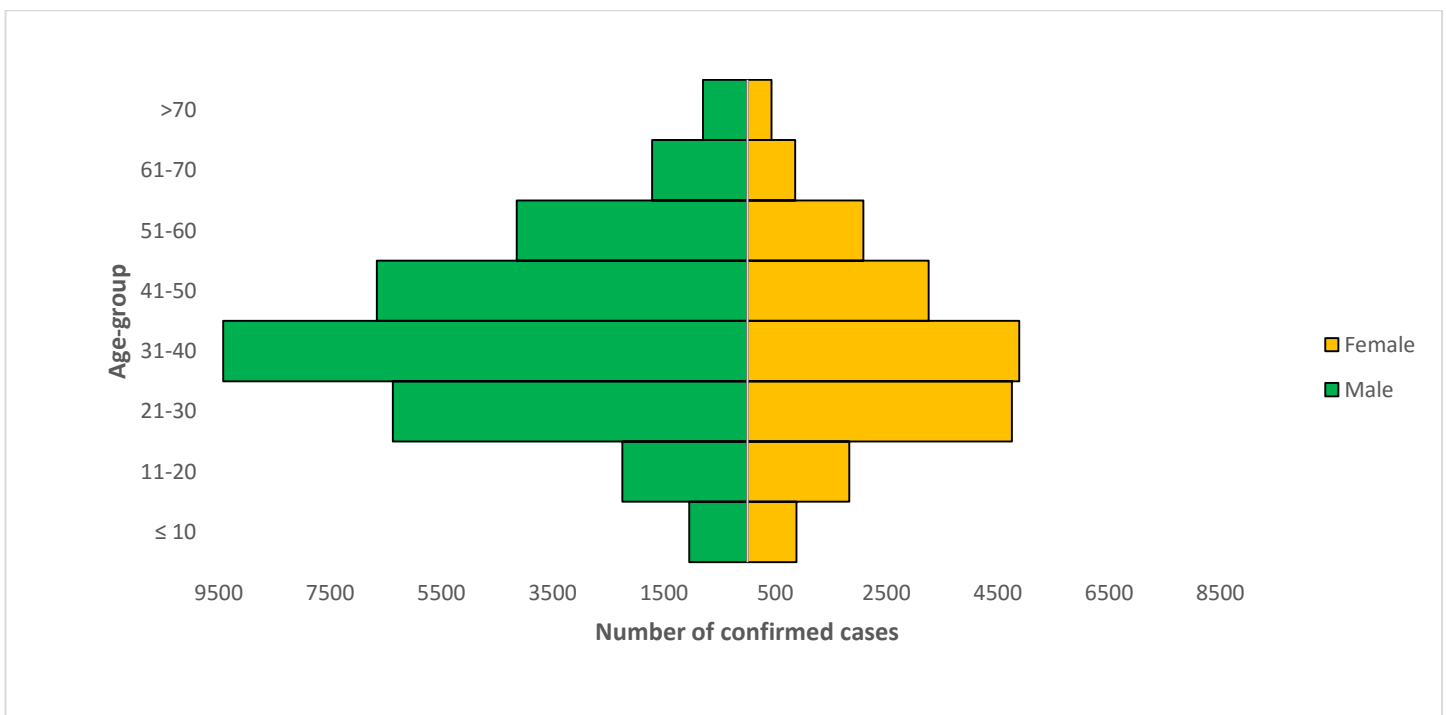


Figure 3: Age-Sex Distribution of Confirmed Cases (WK9 – WK37)



## PREPAREDNESS

Since the confirmation of the first case on 27<sup>th</sup> February 2020, the NCDC has released advisories and statements to help Nigerians and affected groups in particular to respond to the pandemic

- NCDC recently published the first edition of a quick reference guide on setting up sample collection centre - [A step by step guide on setting up a sample collection centre](#)
- NCDC has launched an online course on [Infection, Prevention and Control \(IPC\) for COVID-19](#) NCDC eLearning platform
- Ahead of forthcoming elections in the country, NCDC has issued [Guidelines for Conducting Elections During the COVID-19 Outbreak in Nigeria](#).
- To protect our elders, and those with pre-existing medical conditions, NCDC has issued an [Advisory for Vulnerable Groups](#).
- NCDC has released [guidelines on the re-opening of places for worship](#).
- NCDC has released [Strategies to Improve Surveillance for COVID-19 Guidance for States](#)
- The Nigeria Police Force has released COVID-19 operational guidelines for the [Police and other Law Enforcement Agencies](#) in Nigeria
- Guidelines have been issued for the [safe transportation of remains of persons suspected or confirmed to have died of COVID-19](#)
- Information on diagnostics of the COVID-19 virus can be found in our [detailed FAQ document](#).
- To increase our testing capacity, NCDC has issued guidelines for the [integration of private labs](#).
- Guidelines for [businesses and employers](#) have been updated.
- NCDC has updated its [case definition](#) , [community case definition](#) and [case management guide](#).
- NCDC releases periodic [public health advisories](#) to Nigerians on the COVID-19 disease.
- To adhere to post-lockdown measures, NCDC has released an [advisory on the use of face masks](#), as well as information on the [Use of Cloth face masks](#) and [how to make your cloth face masks](#).
- NCDC has released guidelines for the [management of pregnant women and nursing mothers](#) during the pandemic.
- To address burials of loved ones who die from COVID-19, guidelines have been issued to advise on the [management of dead bodies](#).
- For health centres managing cases, the following documents have been released- a guideline for the [Rational Use of Personal Protective Equipment in the care of COVID-19 cases](#).
- As part of plans to increase the testing capacity of the country, the NCDC published a [National Strategy to Scale Up Access to Coronavirus Disease Testing in Nigeria](#) document.
- The Presidential Task Force has published policies and announcements on COVID-19 [available on the website of the Presidency](#) – including presidential addresses, task force updates and information on livelihood and economic support.

## RESPONSE

On 28<sup>th</sup> February 2020, a multi-sectoral Emergency Operations Centre (EOC) was activated at Level 3 – the highest emergency level in Nigeria –led by NCDC in close coordination with the State Public Health EOCs (PHEOC).

- **Commenced additional training of 18 laboratory scientists on the use of the Polymerase Chain Reaction (PCR) equipment in Gombe State**
- **Feedback provided to State Infection Prevention and Control (IPC) focal persons and partners**
- **Deployed additional response materials and consumables to State Rapid Response Teams (RRT) in Nasarawa State**
- **Conducted training of correctional facilities staff on how to deliver key messages using physical distancing techniques**
- Supported the setting up of sample collection sites in Lagos and Niger States
- Activated a new GeneXpert laboratory in Federal Medical Centre (FMC) Birni-Kebbi, Kebbi State
- Conducted a refresher training for members of Ekiti State COVID-19 EOC Case management pillar on Infection Prevention and Control

- Held a meeting with northern traditional leaders` committee on Primary Health Care (PHC) in collaboration with (PTF) on COVID-19 support at community level
- All education materials can be found via [www.covid19.ncdc.gov.ng](http://www.covid19.ncdc.gov.ng)