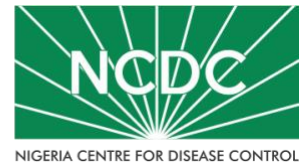


COVID-19 SITUATION REPORT

SITUATION REPORT 222

Wednesday, 7th October 2020



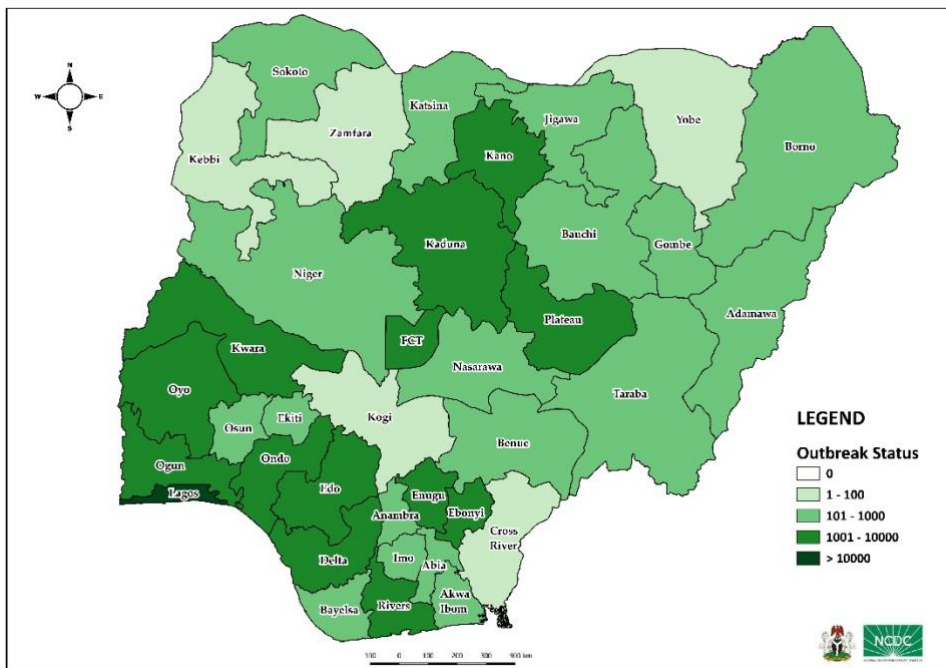
DATA AS REPORTED AND ACCURATE BY NCDC AS AT MIDNIGHT 7TH OCTOBER 2020

HIGHLIGHTS

- One hundred and fifty-five (**155**) confirmed cases were reported in the last 24 hours from **eight** states – Lagos (84), Rivers (31), Kaduna (12), Osun (10), FCT (7), Oyo (6), Ogun (3) and Kwara (2).
- Ninety-five (**95**) discharges have been reported in the last 24 hours in **five** states – Plateau (57), Rivers (16), Kaduna (13), FCT (8) and Oyo (1).
- **No** death was reported in the last 24 hours.
- All **36** states in Nigeria, and the FCT, have reported a confirmed case.

STATE OF THE NATION

Figure 1: Map of Nigeria showing 36 states and FCT affected by COVID-19



SITUATION UPDATES

Total (New in the last 24 hours)

SAMPLES TESTED

545,364 (1,949)¹

CONFIRMED CASES

59,738 (155)

AFFECTED STATES INCLUDING FCT

37

DISCHARGED CASES

51,403 (95)

CONFIRMED FATALITIES

1,113 (0) – 1.9% CFR

DEMOGRAPHICS

MALE – 37,989 (64%)

FEMALE – 21,749 (36%)

MOST AFFECTED AGE GROUP

31 - 40 (27%)

PERSONS OF INTEREST

31,074 (Total)

29,080 (93.6% - Exceeded Follow Up)

PROVENANCE

TRAVEL HISTORY – 1,003 (1.7%)

CONTACTS – 15,607 (26.1%)

UNKNOWN EXPOSURE – 43,128 (72.2%)

GLOBAL UPDATES

TOTAL NUMBER OF CASES

35,659,007 (1,044,269 deaths)

COUNTRIES & TERRITORIES AFFECTED

216*

¹Includes 105 travel tests from FCT and 54Gene lab Lagos travel data

*Excluding the 2 International Conveyance

GENERAL FACT SHEET – DATA AS AT 7TH OCTOBER 2020

Table 1: States with reported laboratory-confirmed COVID-19 cases, recoveries, deaths and days since last reported case

| STATES | CONFIRMED CASES | | DISCHARGED CASES | | DEATHS | | TOTAL ACTIVE CASES | DAYS SINCE LAST REPORTED CASE |
|--------------|-----------------|------------|------------------|-----------|--------------|----------|--------------------|-------------------------------|
| | TOTAL | NEW | TOTAL | NEW | TOTAL | NEW | | |
| Lagos | 19,776 | 84 | 15,250 | 0 | 204 | 0 | 4,322 | 0 |
| FCT | 5,765 | 7 | 5,219 | 8 | 79 | 0 | 467 | 0 |
| Plateau | 3,498 | 0 | 2,848 | 57 | 33 | 0 | 617 | 1 |
| Oyo | 3,279 | 6 | 2,523 | 1 | 40 | 0 | 716 | 0 |
| Edo | 2,634 | 0 | 2,495 | 0 | 107 | 0 | 32 | 1 |
| Rivers | 2,632 | 31 | 2,414 | 16 | 59 | 0 | 159 | 0 |
| Kaduna | 2,463 | 12 | 2,375 | 13 | 40 | 0 | 48 | 0 |
| Ogun | 1,898 | 3 | 1,733 | 0 | 28 | 0 | 137 | 0 |
| Delta | 1,803 | 0 | 1,737 | 0 | 49 | 0 | 17 | 2 |
| Kano | 1,738 | 0 | 1,675 | 0 | 54 | 0 | 9 | 6 |
| Ondo | 1,638 | 0 | 1,545 | 0 | 36 | 0 | 57 | 1 |
| Enugu | 1,289 | 0 | 1,166 | 0 | 21 | 0 | 102 | 12 |
| Kwara | 1,050 | 2 | 982 | 0 | 25 | 0 | 43 | 0 |
| Ebonyi | 1,042 | 0 | 1,008 | 0 | 30 | 0 | 4 | 6 |
| Abia | 898 | 0 | 872 | 0 | 8 | 0 | 18 | 4 |
| Katsina | 894 | 0 | 861 | 0 | 24 | 0 | 9 | 1 |
| Gombe | 883 | 0 | 747 | 0 | 25 | 0 | 111 | 8 |
| Osun | 874 | 10 | 806 | 0 | 17 | 0 | 51 | 0 |
| Borno | 745 | 0 | 705 | 0 | 36 | 0 | 4 | 8 |
| Bauchi | 704 | 0 | 687 | 0 | 14 | 0 | 3 | 2 |
| Imo | 577 | 0 | 547 | 0 | 12 | 0 | 18 | 2 |
| Benue | 481 | 0 | 413 | 0 | 10 | 0 | 58 | 12 |
| Nasarawa | 468 | 0 | 325 | 0 | 13 | 0 | 130 | 1 |
| Bayelsa | 401 | 0 | 373 | 0 | 21 | 0 | 7 | 5 |
| Jigawa | 325 | 0 | 308 | 0 | 11 | 0 | 6 | 12 |
| Ekiti | 322 | 0 | 312 | 0 | 6 | 0 | 4 | 3 |
| Akwa Ibom | 294 | 0 | 278 | 0 | 8 | 0 | 8 | 1 |
| Niger | 261 | 0 | 242 | 0 | 12 | 0 | 7 | 1 |
| Anambra | 250 | 0 | 219 | 0 | 19 | 0 | 12 | 1 |
| Adamawa | 248 | 0 | 208 | 0 | 17 | 0 | 23 | 7 |
| Sokoto | 162 | 0 | 145 | 0 | 17 | 0 | 0 | 12 |
| Taraba | 106 | 0 | 89 | 0 | 6 | 0 | 11 | 2 |
| Kebbi | 93 | 0 | 84 | 0 | 8 | 0 | 1 | 40 |
| Cross River | 87 | 0 | 74 | 0 | 9 | 0 | 4 | 13 |
| Zamfara | 79 | 0 | 73 | 0 | 5 | 0 | 1 | 5 |
| Yobe | 76 | 0 | 62 | 0 | 8 | 0 | 6 | 11 |
| Kogi | 5 | 0 | 3 | 0 | 2 | 0 | 0 | 96 |
| Total | 59,738 | 155 | 51,403 | 95 | 1,113 | 0 | 7,222 | |

States, including FCT, are arranged in descending order by number of total confirmed cases and then alphabetical order

SELECTED CHARTS

Figure 2: Daily Epidemic Curve of Confirmed Cases (WK9 – WK41)

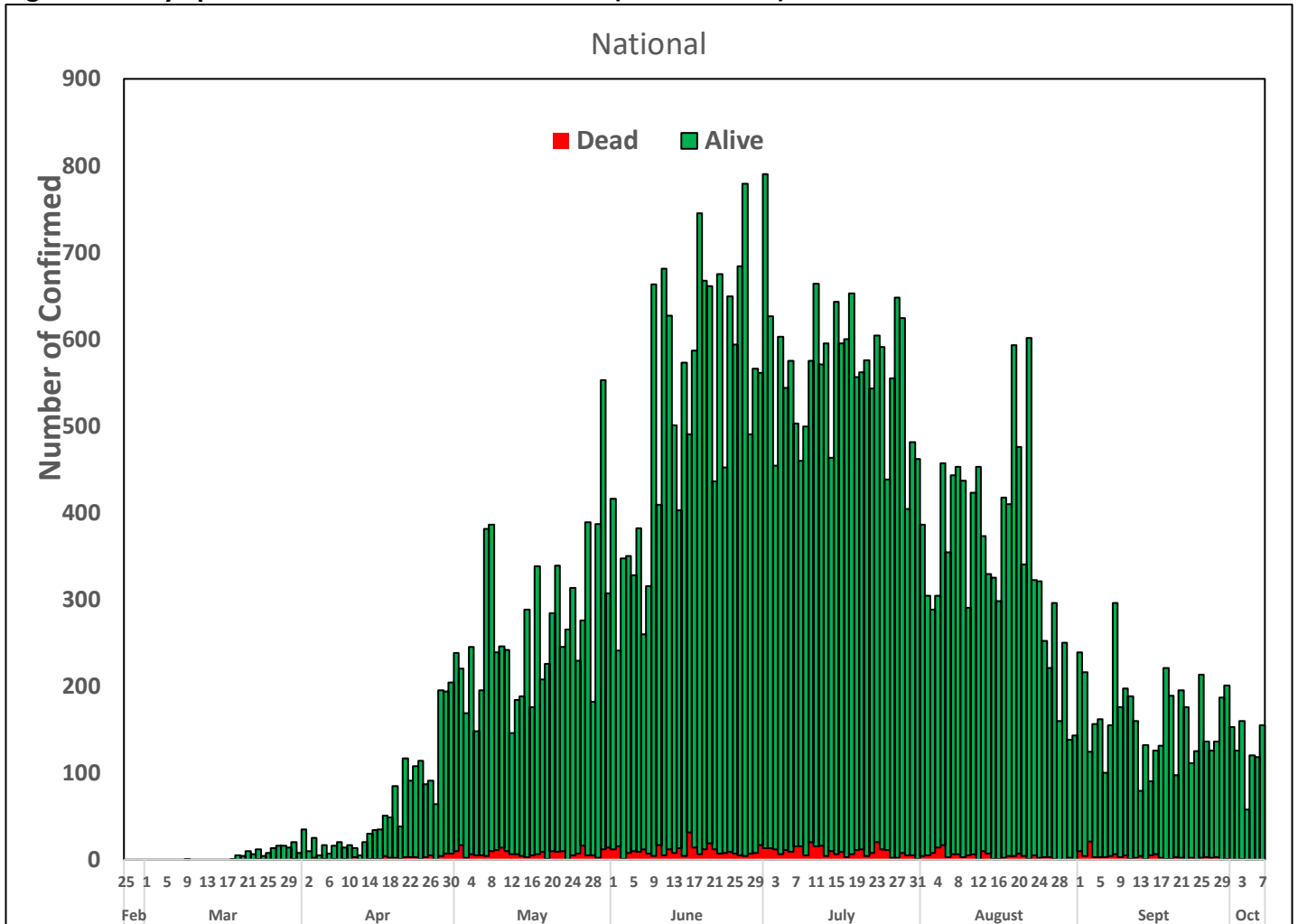
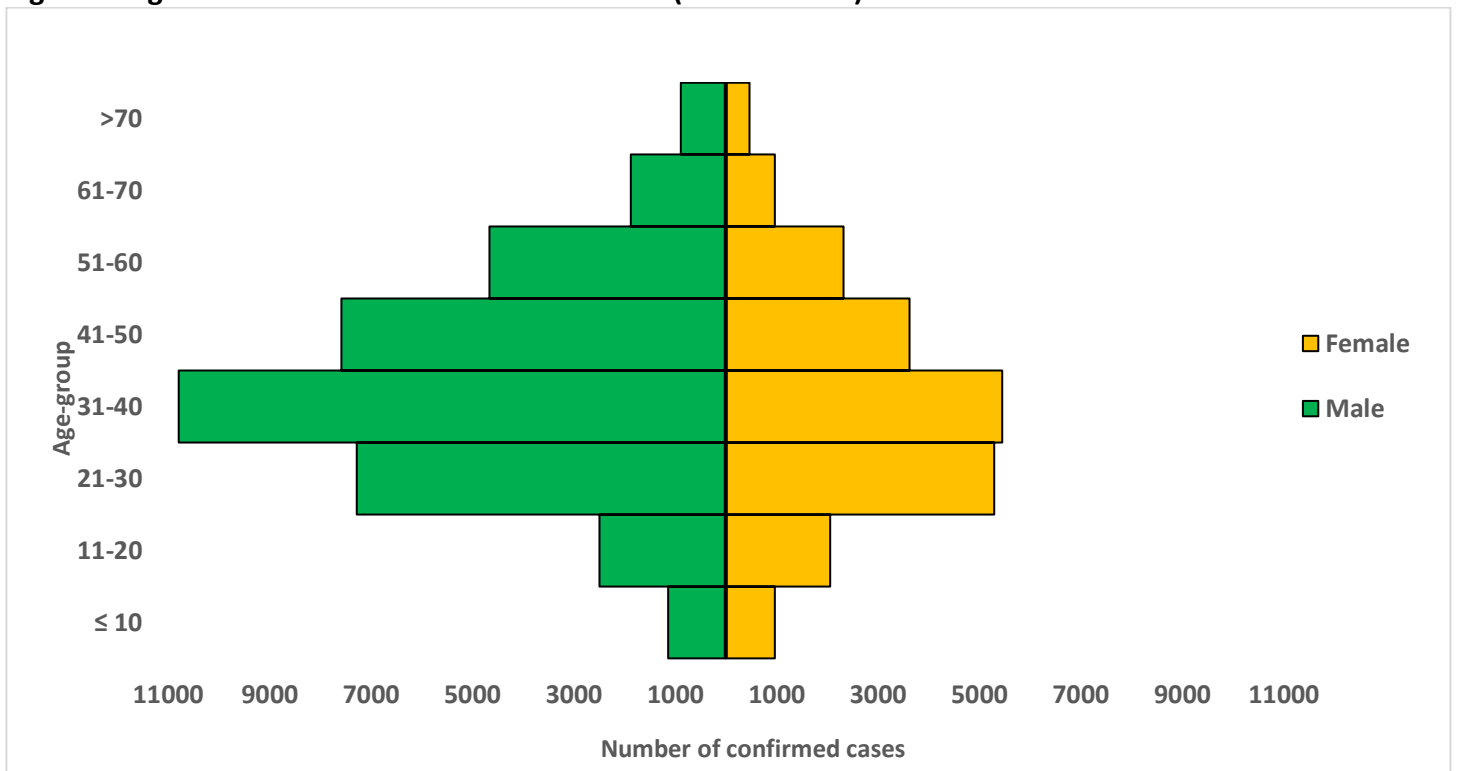


Figure 3: Age-Sex Distribution of Confirmed Cases (WK9 – WK41)



PREPAREDNESS

Since the confirmation of the first case on 27th February 2020, the NCDC has released advisories and statements to help Nigerians and affected groups in particular to respond to the pandemic

- NCDC published second interim guidance – Infection Prevention and Control: [Recommendations during health care provision for suspected and confirmed cases of COVID-19](#)
- NCDC recently published the first edition of a quick reference guide on setting up sample collection centre - [A step by step guide on setting up a sample collection centre](#)
- NCDC has launched an online course on [Infection, Prevention and Control \(IPC\) for COVID-19](#) NCDC eLearning platform
- Ahead of forthcoming elections in the country, NCDC has issued [Guidelines for Conducting Elections During the COVID-19 Outbreak in Nigeria](#).
- To protect our elders, and those with pre-existing medical conditions, NCDC has issued an [Advisory for Vulnerable Groups](#).
- NCDC has released [guidelines on the re-opening of places for worship](#).
- NCDC has released [Strategies to Improve Surveillance for COVID-19 Guidance for States](#)
- The Nigeria Police Force has released COVID-19 operational guidelines for the [Police and other Law Enforcement Agencies in Nigeria](#)
- Guidelines have been issued for the [safe transportation of remains of persons suspected or confirmed to have died of COVID-19](#)
- Information on diagnostics of the COVID-19 virus can be found in our [detailed FAQ document](#).
- To increase our testing capacity, NCDC has issued guidelines for the [integration of private labs](#).
- Guidelines for [businesses and employers](#) have been updated.
- NCDC has updated its [case definition](#) , [community case definition](#) and [case management guide](#).
- NCDC releases periodic [public health advisories](#) to Nigerians on the COVID-19 disease.
- To adhere to post-lockdown measures, NCDC has released an [advisory on the use of face masks](#), as well as information on the [Use of Cloth face masks](#) and [how to make your cloth face masks](#).
- NCDC has released guidelines for the [management of pregnant women and nursing mothers](#) during the pandemic.
- To address burials of loved ones who die from COVID-19, guidelines have been issued to advise on the [management of dead bodies](#).
- For health centres managing cases, the following documents have been released- a guideline for the [Rational Use of Personal Protective Equipment in the care of COVID-19 cases](#).
- As part of plans to increase the testing capacity of the country, the NCDC published a [National Strategy to Scale Up Access to Coronavirus Disease Testing in Nigeria](#) document.
- The Presidential Task Force has published policies and announcements on COVID-19 [available on the website of the Presidency](#) – including presidential addresses, task force updates and information on livelihood and economic support.

RESPONSE

On 28th February 2020, a multi-sectoral Emergency Operations Centre (EOC) was activated at Level 3 – the highest emergency level in Nigeria –led by NCDC in close coordination with the State Public Health EOCs (PHEOC).

- **Ongoing optimisation of a new PCR laboratory in Usman Danfodio University Teaching Hospital (UDUTH), Sokoto State**
- **Concluded training of Health workers on Infection Prevention and Control (IPC) from across LGAs in Kaduna and Adamawa States with support from partners**
- Ongoing training of Uniformed Services personnel on Infection Prevention and Control (IPC) with 20 participants from the North Central geopolitical zone
- Ongoing deployment of Personal Protective Equipment (PPE) to the laboratory network
- Held meeting with education partners on adaptation of Information, Education and Communication (IEC) materials for safe school re-opening
- All education materials can be found via www.covid19.ncdc.gov.ng