

COVID-19 SITUATION REPORT

SITUATION REPORT 159

Wednesday, 5th August 2020



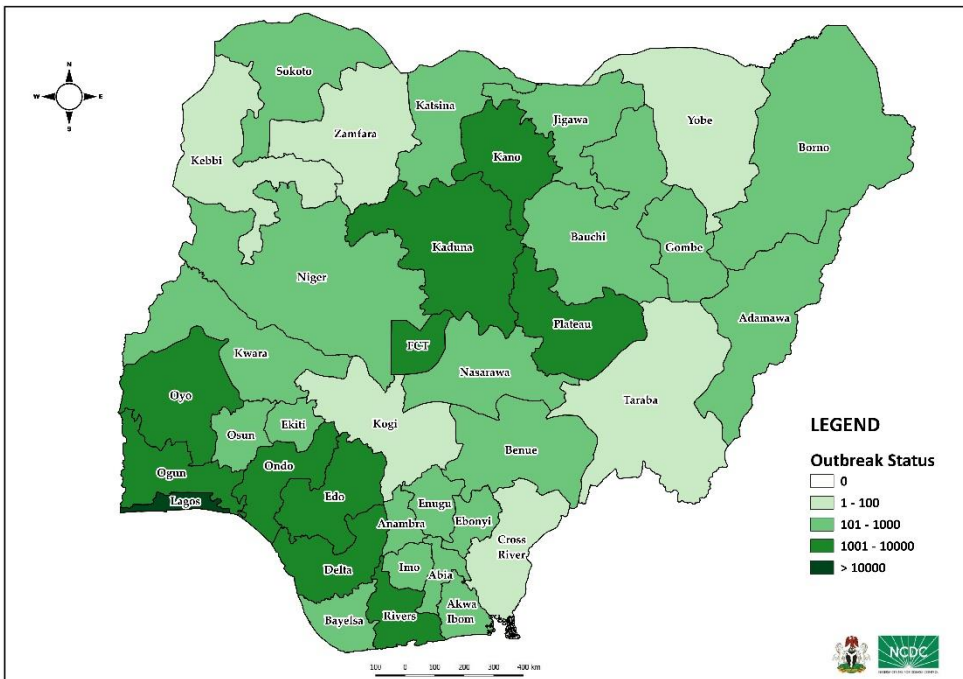
DATA AS REPORTED AND ACCURATE BY NCDC AS AT MIDNIGHT 5th AUGUST 2020

HIGHLIGHTS

- Four hundred and fifty-seven (**457**) confirmed cases were reported in the last 24 hours from **21** states – Lagos (137), FCT (76), Plateau (40), Rivers (35), Enugu (34), Oyo (25), Abia (23), Delta (12), Ebonyi (11), Edo (11), Cross River (10), Kwara (10), Kaduna (9), Anambra (7), Ogun (5), Bauchi (3), Imo (3), Nasarawa (2), Osun (2), Ekiti (1) and Kano(1).
- Three hundred and fourteen (**314**) cases were discharged in the last 24 hours in **17** states – Kwara (69), Ebonyi (60), Abia (46), Edo (30), Rivers (24), FCT (21), Ogun (10), Kaduna (9), Anambra (8), Imo (8), Ekiti (6), Cross River (5), Kano (5), Bayelsa (4), Oyo (4), Kebbi (3) and Ondo (2).
- Seventeen (**17**) deaths were recorded in the last 24 hours in **six** states – Anambra (6), Cross River (4), Edo (3), Oyo (2), FCT (1) and Kebbi (1).
- All **36** states in Nigeria, and the FCT, have reported a confirmed case.

STATE OF THE NATION

Figure 1: Map of Nigeria showing 36 states and FCT affected by COVID-19



SITUATION UPDATES

Total (New in the last 24 hours)

SAMPLES TESTED

306,894 (2,673)

CONFIRMED CASES

44,890 (457)

AFFECTED STATES INCLUDING FCT

37

DISCHARGED CASES

32,165 (314)

CONFIRMED FATALITIES

927 (17) – 2.1% CFR

DEMOGRAPHICS

MALE – 28,985 (65%)

FEMALE – 15,905 (35%)

MOST AFFECTED AGE GROUP

31 - 40 (25%)

PERSONS OF INTEREST

11,241 (Total)

11,127 (99% - Exceeded Follow Up)

PROVENANCE

TRAVEL HISTORY – 847 (2%)

CONTACTS – 11,033 (25%)

UNKNOWN EXPOSURE – 33,010 (73%)

GLOBAL UPDATES

TOTAL NUMBER OF CASES

18,354,342 (696,147 deaths)

COUNTRIES & TERRITORIES AFFECTED*

214

*Excluding the 2 International Conveyance

GENERAL FACT SHEET – DATA AS AT 5th AUGUST 2020

Table 1: States with reported laboratory-confirmed COVID-19 cases, recoveries, deaths and days since last reported case

STATES	CONFIRMED CASES		DISCHARGED CASES		DEATHS		TOTAL ACTIVE CASES	DAYS SINCE LAST REPORTED CASE
	TOTAL	NEW	TOTAL	NEW	TOTAL	NEW		
Lagos	15,551	137	13,106	0	192	0	2,253	0
FCT	4,163	76	1,210	21	45	1	2,908	0
Oyo	2,807	25	1,402	4	30	2	1,375	0
Edo	2,328	11	2,047	30	93	3	188	0
Rivers	1,894	35	1,527	24	53	0	314	0
Kano	1,599	1	1,275	5	53	0	271	0
Delta	1,541	12	1,359	0	43	0	139	0
Kaduna	1,507	9	1,297	9	12	0	198	0
Ogun	1,416	5	1,197	10	24	0	195	0
Plateau	1,283	40	598	0	20	0	665	0
Ondo	1,243	0	651	2	27	0	565	1
Enugu	880	34	485	0	18	0	377	0
Ebonyi	819	11	793	60	26	0	0	0
Kwara	800	10	342	69	21	0	437	0
Katsina	746	0	457	0	24	0	265	2
Borno	628	0	569	0	35	0	24	1
Abia	625	23	517	46	5	0	103	0
Gombe	620	0	529	0	23	0	68	2
Osun	586	2	300	0	13	0	273	0
Bauchi	568	3	521	0	13	0	34	0
Imo	472	3	147	8	9	0	316	0
Benue	356	0	64	0	7	0	285	3
Nasarawa	343	2	223	0	8	0	112	0
Bayelsa	342	0	290	4	21	0	31	1
Jigawa	322	0	308	0	11	0	3	20
Niger	226	0	133	0	12	0	81	1
Akwa Ibom	221	0	150	0	7	0	64	10
Adamawa	176	0	85	0	11	0	80	1
Sokoto	154	0	137	0	16	0	1	11
Ekiti	153	1	74	6	2	0	77	0
Anambra	142	7	83	8	18	6	41	0
Kebbi	90	0	82	3	8	1	0	15
Zamfara	77	0	71	0	5	0	1	18
Taraba	72	0	55	0	4	0	13	1
Cross River	68	10	24	5	8	4	36	0
Yobe	67	0	54	0	8	0	5	6
Kogi	5	0	3	0	2	0	0	33
Total	44,890	457	32,165	314	927	17	11,798	

States, including FCT, are arranged in descending order by number of total confirmed cases and then alphabetical order

SELECTED CHARTS

Figure 2: Daily Epidemic Curve of Confirmed Cases (WK9 – WK32)

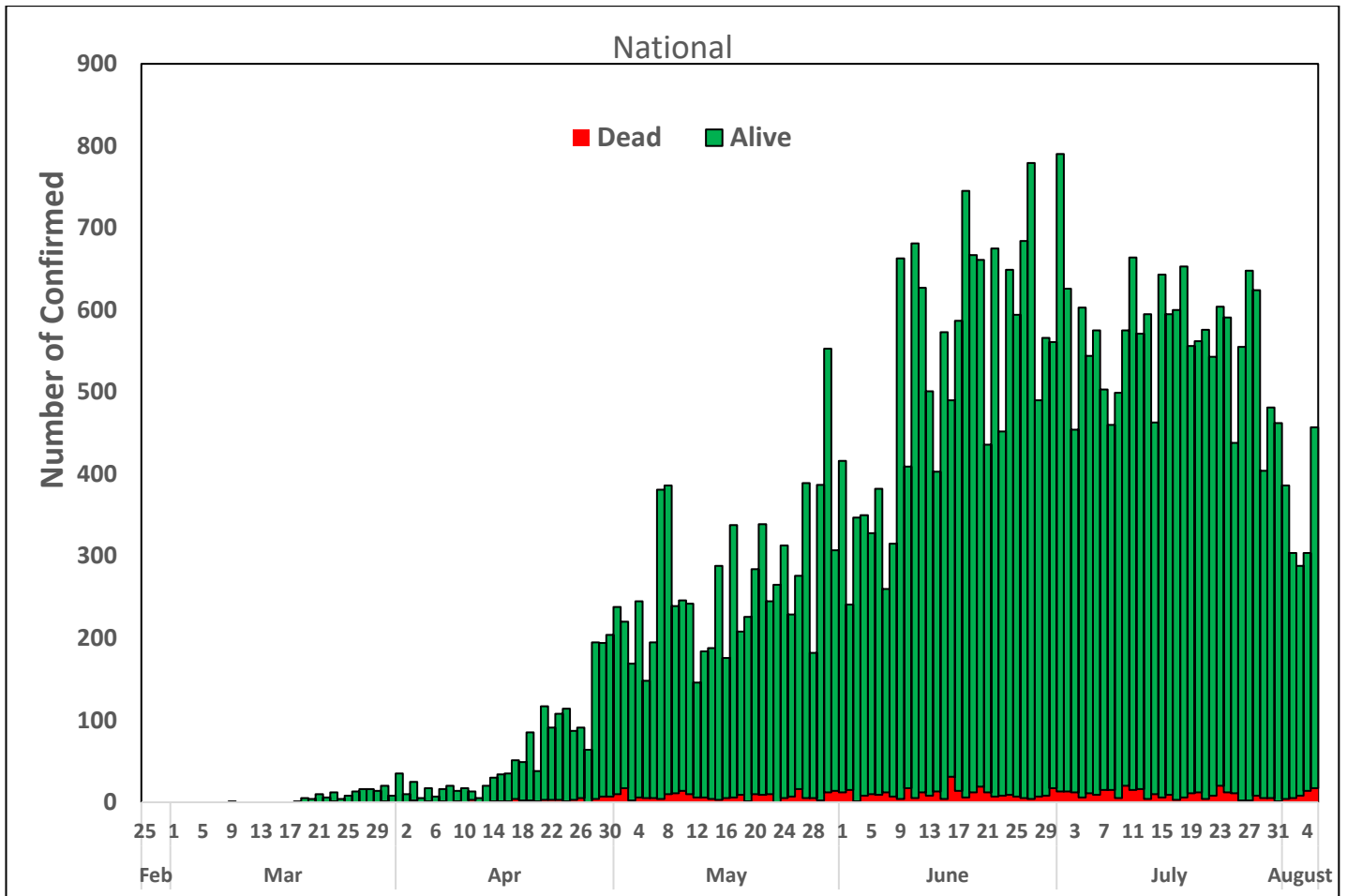
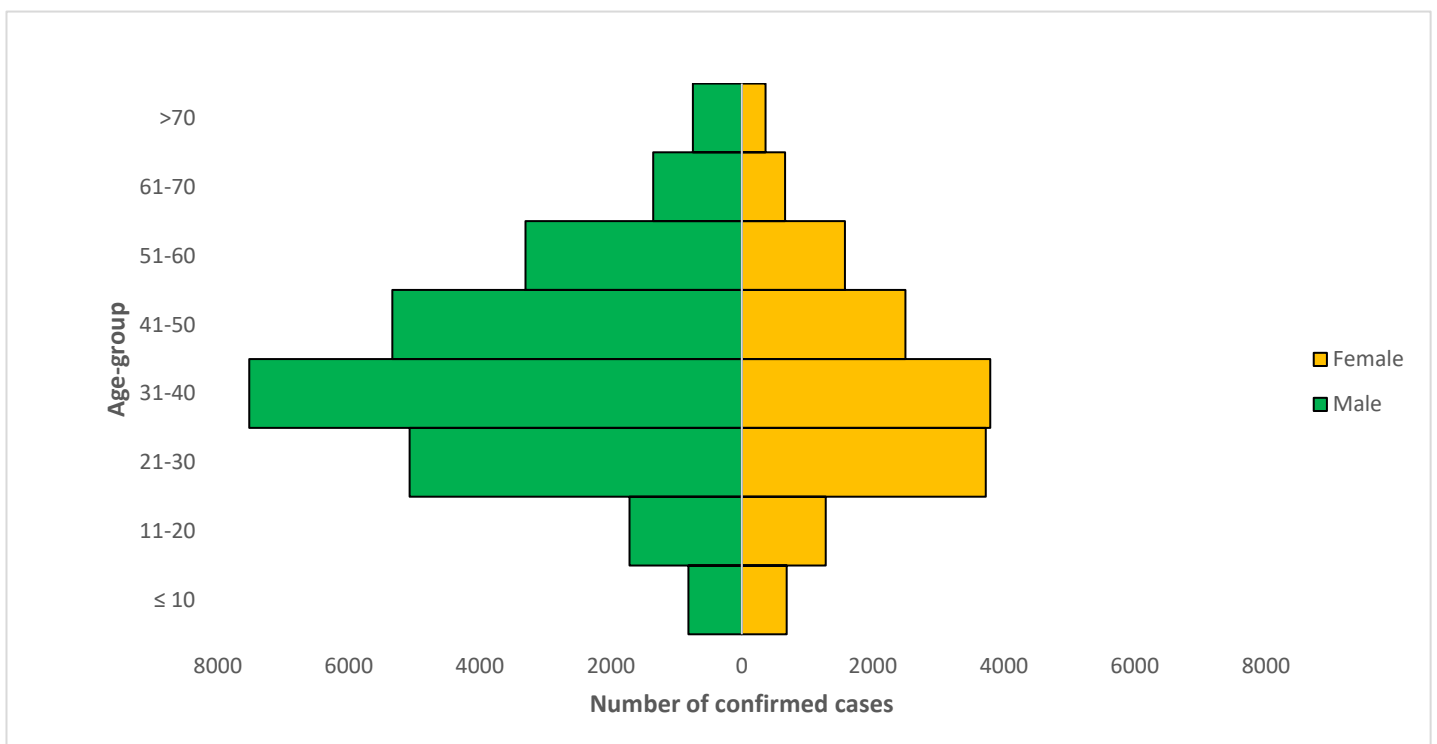


Figure 3: Age-Sex Distribution of Confirmed Cases (WK9 – WK32)



PREPAREDNESS

Since the confirmation of the first case on 27th February 2020, the NCDC has released advisories and statements to help Nigerians and affected groups in particular to respond to the pandemic

- NCDC has launched an online course on [Infection, Prevention and Control \(IPC\) for COVID-19](#) NCDC eLearning platform
- Ahead of forthcoming elections in the country, NCDC has issued [Guidelines for Conducting Elections During the COVID-19 Outbreak in Nigeria](#).
- To protect our elders, and those with pre-existing medical conditions, NCDC has issued an [Advisory for Vulnerable Groups](#).
- NCDC has released [guidelines on the re-opening of places for worship](#).
- NCDC has released [Strategies to Improve Surveillance for COVID-19 Guidance for States](#)
- The Nigeria Police Force has released COVID-19 operational guidelines for the [Police and other Law Enforcement Agencies in Nigeria](#)
- Guidelines have been issued for the [safe transportation of remains of persons suspected or confirmed to have died of COVID-19](#)
- Information on diagnostics of the COVID-19 virus can be found in our [detailed FAQ document](#).
- To increase our testing capacity, NCDC has issued guidelines for the [integration of private labs](#).
- Guidelines for [businesses and employers](#) have been updated.
- NCDC has updated its [case definition](#) , [community case definition](#) and [case management guide](#).
- NCDC releases periodic [public health advisories](#) to Nigerians on the COVID-19 disease.
- To adhere to post-lockdown measures, NCDC has released an [advisory on the use of face masks](#), as well as information on the [Use of Cloth face masks](#) and [how to make your cloth face masks](#).
- NCDC has released guidelines for the [management of pregnant women and nursing mothers](#) during the pandemic.
- To address burials of loved ones who die from COVID-19, guidelines have been issued to advise on the [management of dead bodies](#).
- For health centres managing cases, the following documents have been released- a guideline for the [Rational Use of Personal Protective Equipment in the care of COVID-19 cases](#).
- As part of plans to increase the testing capacity of the country, the NCDC published a [National Strategy to Scale Up Access to Coronavirus Disease Testing in Nigeria](#) document.
- The Presidential Task Force has published policies and announcements on COVID-19 [available on the website of the Presidency](#) – including presidential addresses, task force updates and information on livelihood and economic support.

RESPONSE

On 28th February 2020, a multi-sectoral Emergency Operations Centre (EOC) was activated at Level 3 – the highest emergency level in Nigeria –led by NCDC in close coordination with the State Public Health EOCs (PHEOC).

- **Engaged with development partners for the training and deployment of Network of People living with HIV and AIDS in Nigeria (NEPWHAN) members to support COVID-19 surveillance activities in 30 Local Government Areas in 15 states**
- **Commenced National Training of Trainers (TOT) for case managers from Federal Teaching Hospital and Institutions supporting the COVID-19 outbreak response in the North East and North Central States**
- **Trained Principals, Heads of private and public secondary schools on Infection Prevention and Control (IPC) in preparation for school reopening**
- **Disseminated Information, Education and Communication (IEC) materials to three states**
- **Deployed Personal Protective Equipment (PPE), response materials and commodities to the Laboratory Network in Bayelsa, Taraba, Nasarawa, Zamfara and Gombe**
- **Activated a total of 62 COVID-19 testing laboratories across states**
- **Intensified follow-up and support for states' step-down training on active case search and contact tracing in communities and health facilities**

- Conducted training of 27 healthcare workers at Federal College of Education (FCE), Osiele Abeokuta, Ogun State
- Reviewed learning materials for children on disease prevention and health promotion
- All education materials can be found via www.covid19.ncdc.gov.ng