

# YELLOW FEVER SITUATION REPORT



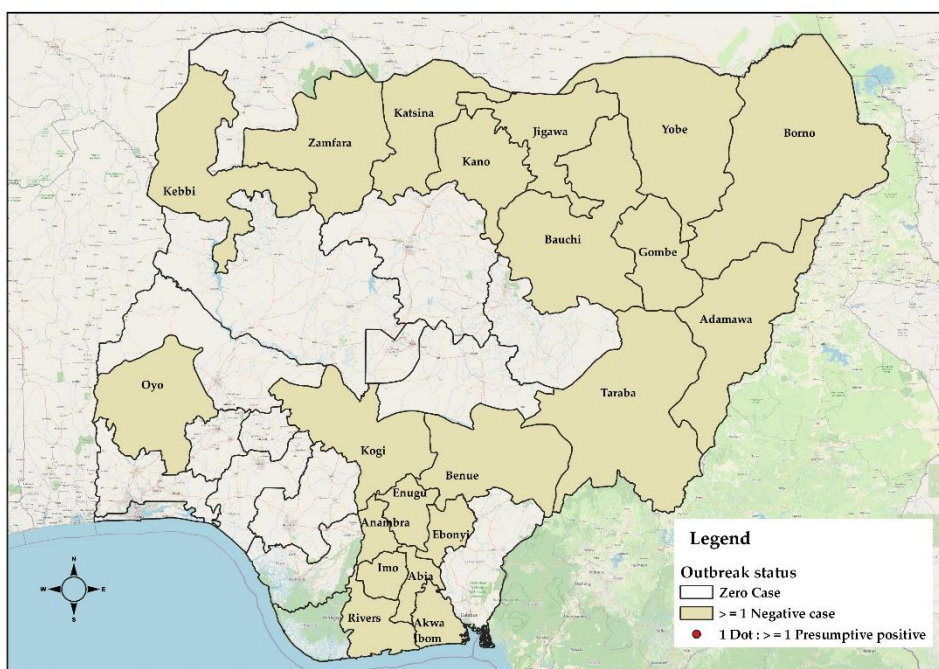
Serial Number: 003	March 2022 Monthly Sitrep
Epi Week:	9 <sup>th</sup> – 13 <sup>th</sup> as at 31 <sup>st</sup> March 2022
Reporting Month:	March, 2022

REPORTING MONTH: MARCH, 2022

## HIGHLIGHTS

### REPORTING PERIOD: 1<sup>ST</sup> – 31<sup>ST</sup> MARCH 2022

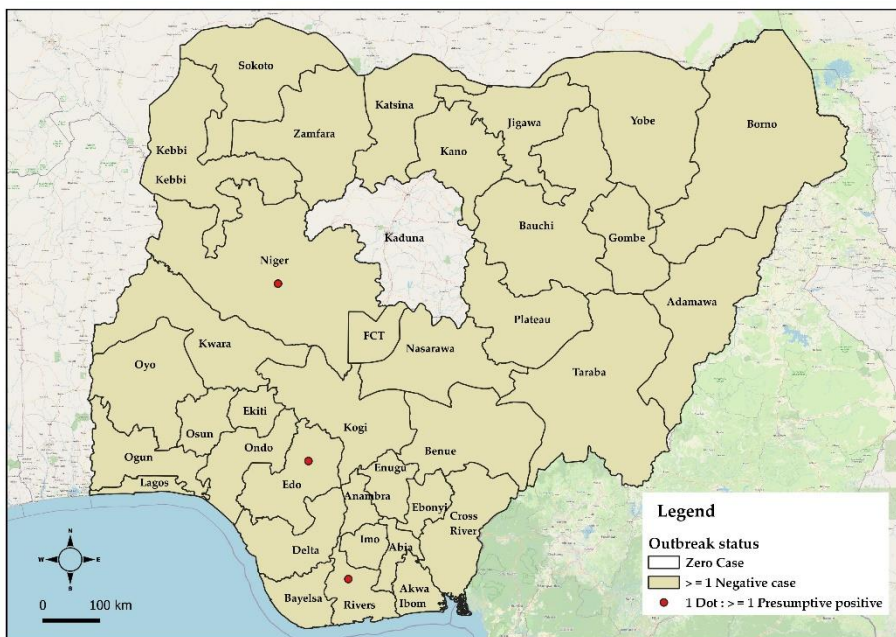
- The Nigeria Centre for Disease Control (NCDC) continues to monitor reports of yellow fever cases in Nigeria.
- A total of 235 Cases were reported from 115 LGAs across 21 states including the FCT. Abia (8), Adamawa (4), Akwa Ibom (2), Anambra (13), Bauchi (14), Benue (3), Borno (21), Ebonyi (8), Enugu (12), Gombe (1), Imo (9), Jigawa (35), Kano (1), Katsina (43), Kebbi (6), Kogi (1), Oyo (9), Sokoto (9), Taraba (19), Yobe (13) and Zamfara (4).
- Three presumptive positive results were recorded from; University of Benin Teaching Hospital (UBTH) (2) and Maitama District Hospital (MDH) Abuja (1). These were reported from Edo (1), Niger (1), Rivers (1) States.
- No confirmed case from both the National Reference Laboratory (NRL) Gaduwa Abuja, and Institut Pasteur (IP) Dakar within the reporting period
- Two deaths were recorded among suspected cases within the reporting period



<b>235</b> SUSPECTED CASES	<b>21</b> STATES WITH SUSPECTED CASES
<b>0</b> CONFIRMED CASES	<b>0</b> STATES WITH CONFIRMED CASES
<b>0</b> DEATHS IN CONFIRMED CASES	<b>0</b> STATES WITH DEATHS IN CONFIRMED CASES

## CUMMULATIVE FOR 1<sup>ST</sup> JANUARY 2022 -31<sup>ST</sup> MARCH 2022

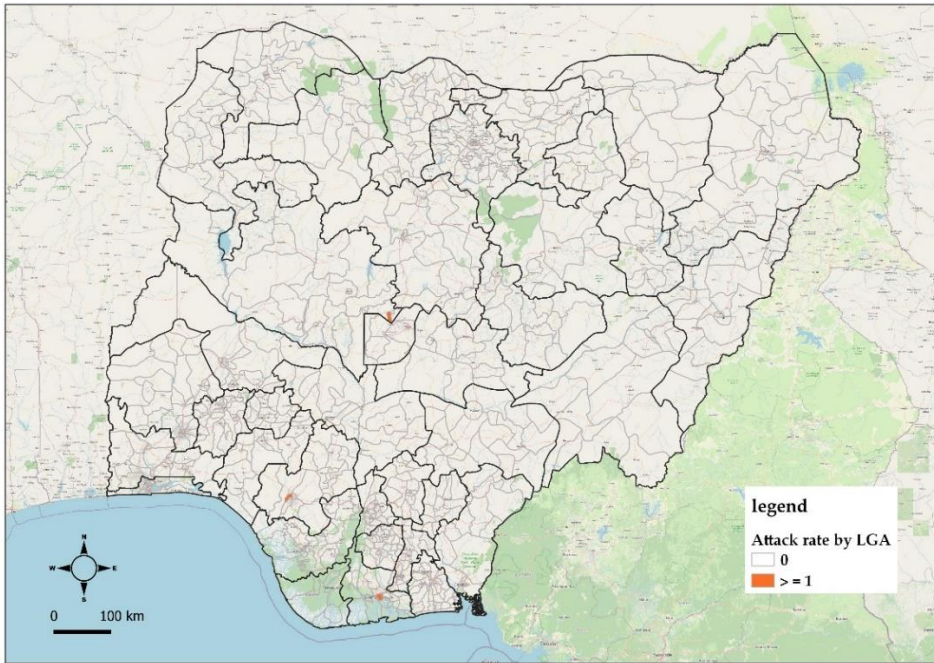
- Cumulatively from 1<sup>st</sup> January 2022 – 31<sup>st</sup> March 2022 a total of 454 suspected cases have been reported from 35 states and FCT in 288 LGAs
- The cases were reported from the following states: Abia (14), Adamawa (4), Akwa Ibom (2), Anambra (37), Bauchi (14), Benue (9), Borno (21), Delta (1), Ebonyi (17), Edo (3), Ekiti (5), Enugu (22), FCT (2), Gombe (1), Imo (18), Jigawa (35), Kano (1), Katsina (43), Kebbi (6) Kogi (9), Kwara (5), Lagos (4), Nasarawa (13), Niger (21), Ogun (10), Ondo (29), Osun (6), Oyo (35), Plateau (19), Rivers (3), Sokoto (9), Taraba (19), Yobe(13), Zamfara (4).
- All the suspected cases were reported from 234 LGAs across 36 states and FCT. See Table (1)
- Total of 3 presumptive positive cases were recorded from the Nigeria Laboratories
- Presumptive positives were recorded from UBTH Benin (2) and MDH Abuja (1). The cases were reported from: **Edo -1** (Egor). **Niger -1** (Suleja). **Rivers-1** (Port-Harcourt). These samples have been shipped to IP Dakar for confirmation
- No confirmed case from both the NRL and IP Dakar from January to March 2022
- Two deaths recorded from suspected cases in katsina (1) and Benue (1); [CFR = 0.4%].
- Male to female ratio was 1.1:1 with males 233 (51.3%) and females 221 (48.7%)
- Sixty-four (64%) percent of cases were predominantly aged 30 years and below
- Fifty-seven (12.6%) of suspected cases had at least one dose of yellow fever vaccine
- The NCDC is coordinating response activities through the National Multi-agency Yellow Fever Technical Working Group (YF TWG)



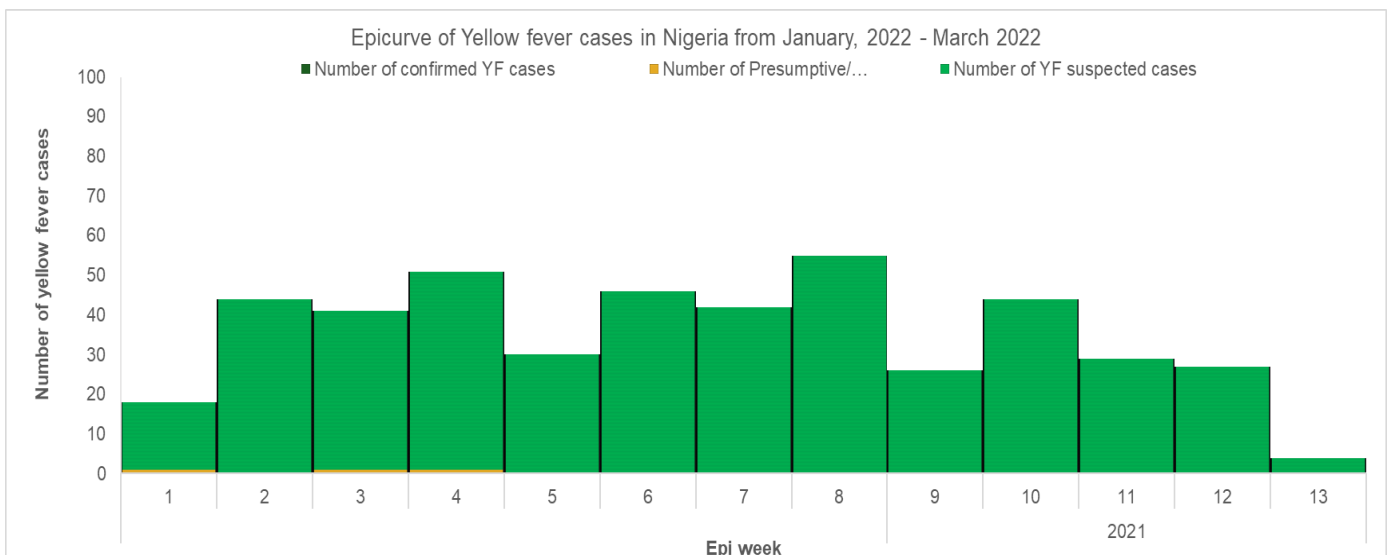
<b>454</b> SUSPECTED CASES	<b>36</b> STATES WITH SUSPECTED CASES
<b>0</b> CONFIRMED CASES	<b>0</b> STATES WITH CONFIRMED CASES
<b>0</b> DEATHS IN CONFIRMED CASES	<b>0</b> STATES WITH DEATHS IN CONFIRMED CASES

**Table 1: Summary of yellow fever cases in Nigeria from January - March 2022**

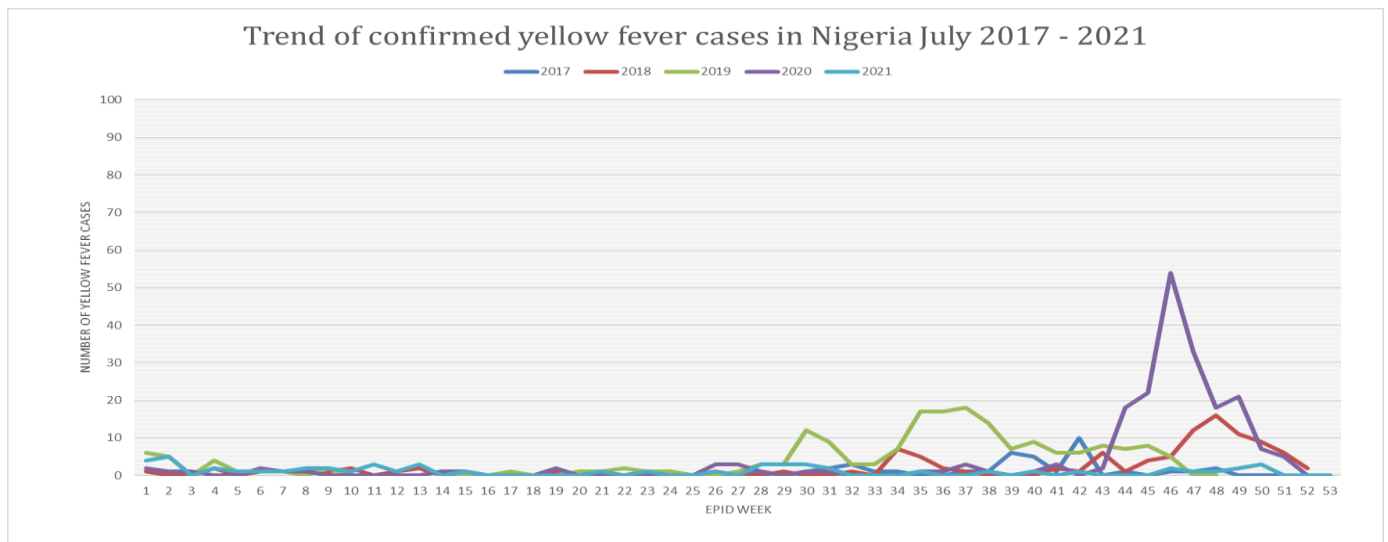
State	# Suspected Cases	# LGAs with suspected cases	# LGAs with confirmed cases	Laboratory Results					Deaths	
				Samples positive (IgM) & Inconclusive in NG	LGAs with positive (IgM) & Inconclusive in NG	Confirmed Cases (PCR)	Confirmed Cases (IP Dakar)	Total Confirmed Cases	# Deaths among Confirmed Cases [CFR] (%)	# Deaths among All Cases [CFR](%)
Abia	14	9	-	-	-	-	-	-	-	-
Adamawa	4	4	-	-	-	-	-	-	-	-
Akwa Ibom	2	2	-	-	-	-	-	-	-	-
Anambra	37	16	-	-	-	-	-	-	-	-
Bauchi	14	5	-	-	-	-	-	-	-	-
Bayelsa	-	3	-	-	-	-	-	-	-	-
Benue	9	6	-	-	-	-	-	-	-	1
Borno	21	11	-	-	-	-	-	-	-	-
Cross River	-	-	-	-	-	-	-	-	-	-
Delta	1	1	-	-	-	-	-	-	-	-
Ebonyi	17	10	-	-	-	-	-	-	-	-
Edo	3	3	-	1	1	-	-	-	-	-
Ekiti	5	5	-	-	-	-	-	-	-	-
Enugu	22	11	-	-	-	-	-	-	-	-
FCT Abuja	2	2	-	-	-	-	-	-	-	-
Gombe	1	1	-	-	-	-	-	-	-	-
Imo	18	10	-	-	-	-	-	-	-	-
Jigawa	35	8	-	-	-	-	-	-	-	-
Kaduna	-	-	-	-	-	-	-	-	-	-
Kano	1	1	-	-	-	-	-	-	-	-
Katsina	43	21	-	-	-	-	-	-	-	1
Kebbi	6	3	-	-	-	-	-	-	-	-
Kogi	9	6	-	-	-	-	-	-	-	-
Kwara	5	4	-	-	-	-	-	-	-	-
Lagos	4	3	-	-	-	-	-	-	-	-
Nasarawa	13	5	-	-	-	-	-	-	-	-
Niger	21	9	-	1	1	-	-	-	-	-
Ogun	10	7	-	-	-	-	-	-	-	-
Ondo	29	10	-	-	-	-	-	-	-	-
Osun	6	4	-	-	-	-	-	-	-	-
Oyo	35	18	-	-	-	-	-	-	-	-
Plateau	19	9	-	-	-	-	-	-	-	-
Rivers	3	3	-	1	1	-	-	-	-	-
Sokoto	9	4	-	-	-	-	-	-	-	-
Taraba	19	11	-	-	-	-	-	-	-	-
Yobe	13	8	-	-	-	-	-	-	-	-
Zamfara	4	4	-	-	-	-	-	-	-	-
<b>TOTAL</b>	<b>454</b>	<b>237(31%)</b>	<b>0</b>	<b>3(0.7%)</b>	<b>3 (0.4%)</b>	<b>0</b>	<b>0</b>	<b>0</b>	<b>0</b>	<b>2(0.4%)</b>



**Figure 1: Map of Nigeria showing yellow fever outbreak attack rates in affected LGAs from January – March 2022**



**Figure 2: Epicurve of yellow fever cases in Nigeria from January – March 2022**



**Figure 3: Trend of confirmed yellow fever cases in Nigeria 2017 – 2021**

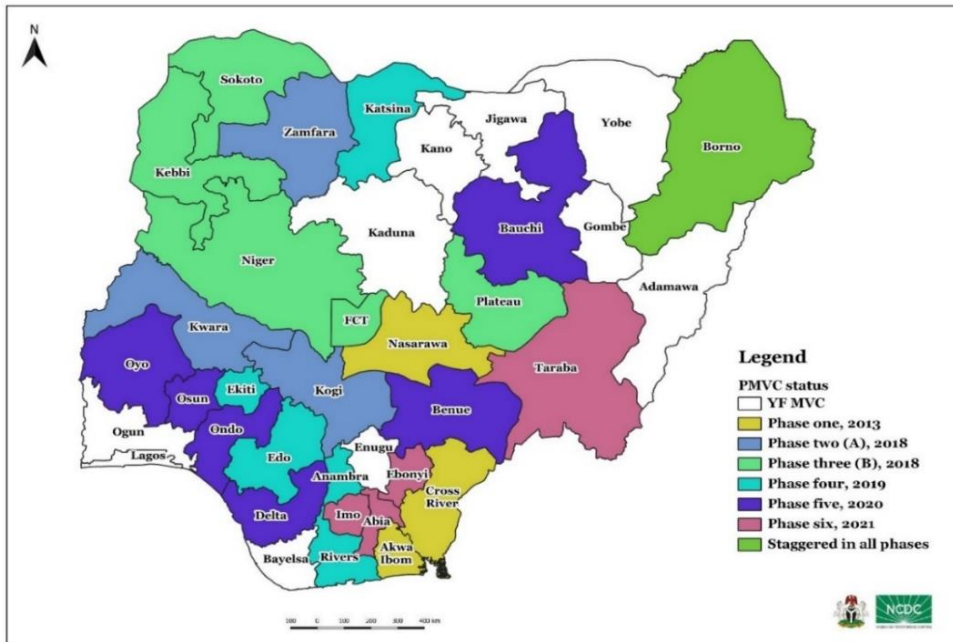


Figure 4: Map of Nigeria showing states and year of implementation of yellow fever mass vaccination campaigns from 2013 – 2021

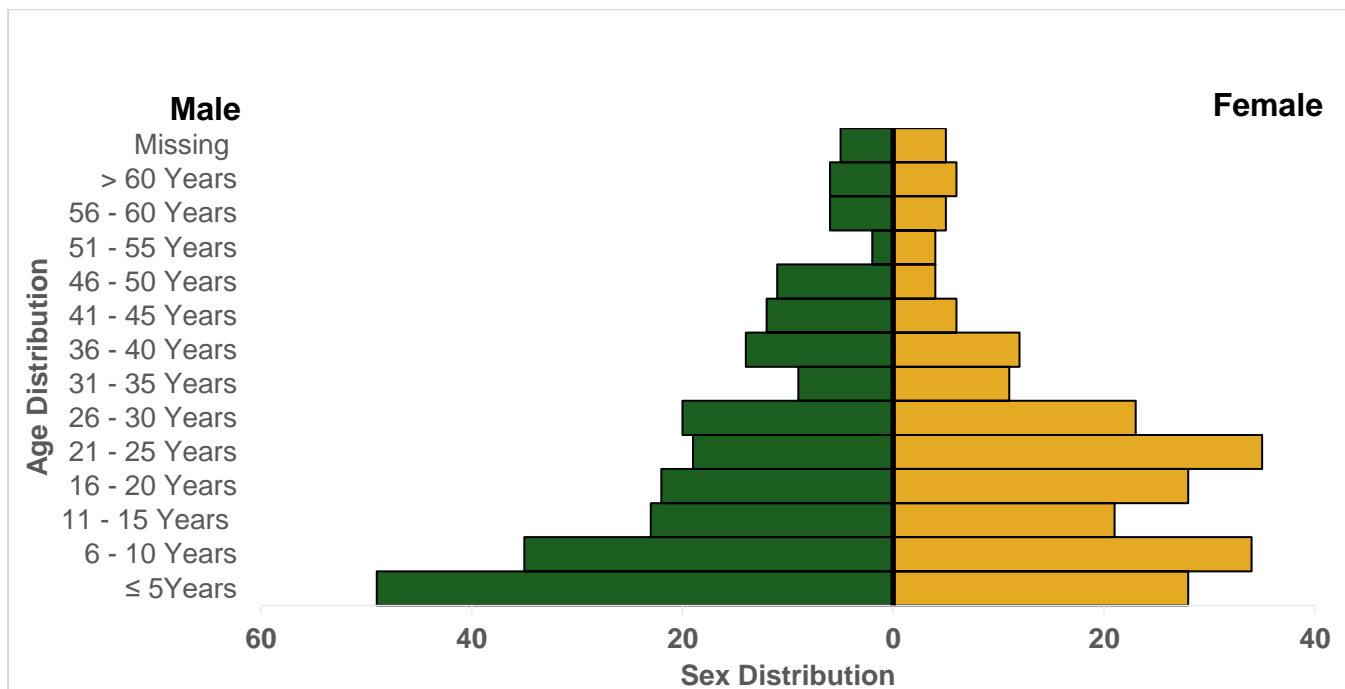


Figure 5: Age and sex distribution of yellow fever cases in Nigeria from January – March 2022.

# Partners

