

YELLOW FEVER SITUATION REPORT



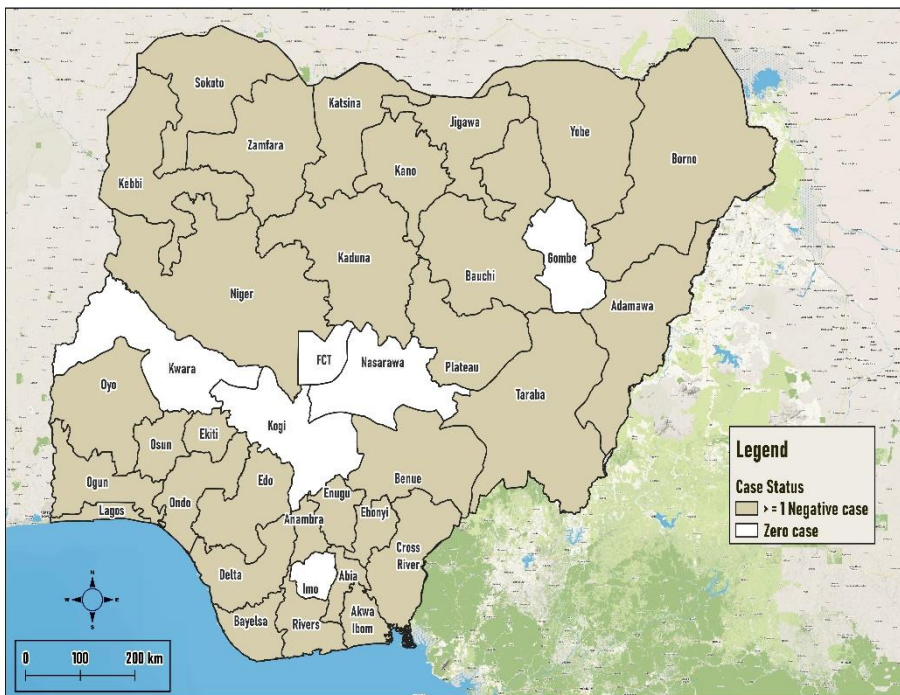
Serial Number: 009	November 2022 Monthly Sitrep
Epi Week:	45 - 48 as at 30 th November 2022
Reporting Month:	November 2022

REPORTING MONTH: November 2022

HIGHLIGHTS

REPORTING PERIOD: 1st– 30th November 2022

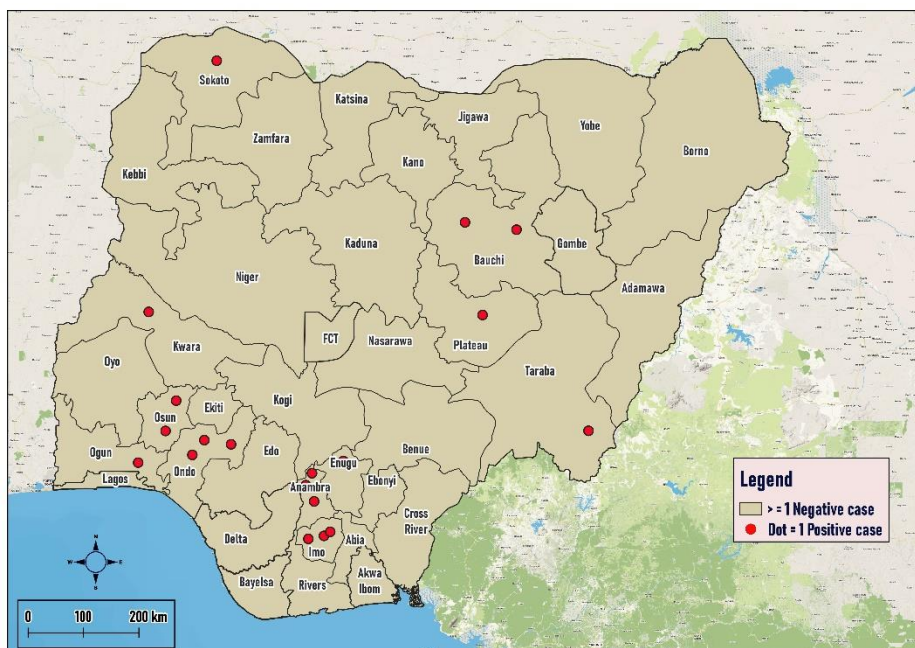
- The Nigeria Centre for Disease Control & Preventions (NCDC) continues to monitor reports of yellow fever cases in Nigeria.
- A total of 405 suspected cases were reported from 156 Local Government Areas (LGAs) across 31 states: Abia (3), Adamawa (3), Akwa Ibom (5), Anambra (6), Bauchi (49), Bayelsa (3), Benue (6), Borno (21), Cross River (4) Delta (4), Ebonyi (1), Edo (3), Ekiti (7), Enugu (30), Jigawa (60), Kaduna (27), Kano (11), Katsina (33), Kebbi (44), Lagos (2), Niger (1), Ogun (11), Ondo (13), Osun (1), Oyo (2), Plateau (2), Rivers (4), Sokoto (3), Taraba (14), Yobe (21), and Zamfara (11).
- Three presumptive positive cases were reported from CPHL and UBTH. The cases were reported from Ogun-2 (Abeokuta North, Ijebu North) and Edo-1 (Uhunmwonde).
- No Confirmed case within the reporting period
- No death was recorded among suspected and confirmed cases in the reporting month.



405 SUSPECTED CASES	31 STATES WITH SUSPECTED CASES
0 CONFIRMED CASE	0 STATE WITH CONFIRMED CASE
0 STATES WITH DEATHS IN CONFIRMED CASES	0 DEATHS IN CONFIRMED CASES

CUMULATIVE FOR 1st JANUARY 2022 – 30th November 2022

- Cumulatively from 1st January 2022 – 30th November, a total of 2,350 suspected cases have been reported from 529 LGAs in 36 states including the FCT.
- The cases were reported from the following states: Abia (66), Adamawa (26), Akwa Ibom (14), Anambra (116), Bauchi (165), Bayelsa (28), Benue (44), Borno (174), Cross River (48), Delta (14), Ebonyi (32), Edo (31), Ekiti (58), Enugu (126), FCT (7), Gombe (16), Imo (85), Jigawa (180), Kaduna (44), Kano (39), Katsina (171), Kebbi (79), Kogi (26), Kwara (53), Lagos (8), Nasarawa (34), Niger (43), Ogun (52), Ondo (104), Osun (27), Oyo (100), Plateau (93), Rivers (34), Sokoto (32), Taraba (68), Yobe (82), and Zamfara (31)
- Total of twenty-one (21) presumptive positive and nine (9) inconclusive results were recorded from the Nigeria Laboratory network.
- These **presumptive positives** were from CPHL Lagos (8), MDH Abuja (3), NRL Abuja (2), UBTH Benin (3), UNTH Enugu (3), and YDMH (2). These were reported from **Anambra -2** (Anambra East, Ogbaru), **Cross River -1** (Akpabuyo), **Edo -2** (Egor, Ughunmwode), **Ekiti-1** (Irepodun/Ifelodun), **Imo -1** (Owerri West), **Kwara-1** (Kaiama), **Niger -1** (Suleja), **Ogun-3** (Ijebu East, Ijebu North, Abeokuta), **Ondo-4** (Akure South), **Osun-1** (Atakunmosa East), **Plateau -1** (Qua'an Pan), **Rivers-1** (Port-Harcourt), **Taraba -1** (Karim Lamido), **Sokoto-2** (Dange-shuni, Tambuwal). The **inconclusive** cases were reported from **Anambra-2** (Idemili South (1), Ayamelum (1), **Bauchi -1** (Katagum), **Enugu -1** (Agwu (1), **Imo -2** (Nwangele, Ahiazu Mbaise) **Oyo -1** (Olorunsogo), **Ogun-1** (Ijebu Ode) and **Osun -1** (Irewole)]. These samples have been shipped to IP Dakar for confirmation.
- Twenty (20) confirmed cases have been reported from: **Anambra-4** [Anambra East (1), Idemili South (1), Ogbaru (1), Njikoka (1)], **Bauchi -2** [Jama'are (1), Katagum (1)], **Enugu -1** (Awgu (1)], **Imo -3** [Ahiazu Mbaise (1), Nwangele (1), Owerri West (1)], **Kwara -1** [Kaiama (1)], **Ogun -1** [Ijebu East (1)], **Ondo-3** [Akure South (3)], **Osun-2** [Atakunmosa East (1), Irewole (1)], **Plateau -1** [Qua'an Pan (1)] **Sokoto-1** [Dange-shuni (1), **Taraba-1** [Karim Lamido (1)]
- Fifteen deaths recorded from suspected cases in Abia (1), Bayelsa (1), Benue (1), Imo (1), Kaduna (2), Katsina (2), Kebbi (1), Taraba (2), Yobe (1) and Zamfara (3) States [**CFR = 0.6%**].
- Male to female ratio for suspected cases was **1.2:1** with males 1,294 (55.0%) and females 1,056 (45.0%)
- Seventy-six percent (76%) of cases were predominantly aged 30 years and below
- Two hundred and forty (11%) of 2,350 suspected cases received at least one dose of the yellow fever vaccine
- The NCDC is coordinating response activities through the National Multi-agency Yellow Fever Technical Working Group (YF TWG)



2350

**SUSPECTED
CASES**

36+1

**STATES WITH
SUSPECTED
CASES**

20

**CONFIRMED
CASES**

11

**STATES WITH
CONFIRMED
CASES**

0

**DEATHS IN
CONFIRMED
CASES**

0

**STATES WITH
DEATHS IN
CONFIRMED
CASES**

Table 1: Summary of yellow fever cases in Nigeria from January – November 2022

State	# Suspected Cases	# LGAs with suspected cases	# LGAs with confirmed cases	Laboratory Results					Deaths	
				Samples positive (IgM) & Inconclusive in NG)	LGAs with positive (IgM) & Inconclusive in NG)	Confirmed Cases (PCR)	Confirmed Cases (IP Dakar)	Total Confirmed Cases	# Deaths among Confirmed Cases [CFR] (%)	# Deaths among All Cases [CFR](%)
Abia	66	15	-	-	-	-	-	-	-	1
Adamawa	26	11	-	-	-	-	-	-	-	-
Akwa Ibom	14	9	-	-	-	-	-	-	-	-
Anambra	116	20	3	4	4	1	3	4	-	-
Bauchi	165	19	2	1	1	1	1	2	-	-
Bayelsa	28	7	-	-	-	-	-	-	-	1
Benue	44	19	-	-	-	-	-	-	-	1
Borno	174	22	-	-	-	-	-	-	-	-
Cross River	48	12	-	1	1	-	-	-	-	-
Delta	14	6	-	-	-	-	-	-	-	-
Ebonyi	32	13	-	-	-	-	-	-	-	-
Edo	31	14	-	2	2	-	-	-	-	-
Ekiti	58	15	-	1	1	-	-	-	-	-
Enugu	126	16	1	1	1	-	1	1	-	-
FCT Abuja	7	3	-	-	-	-	-	-	-	-
Gombe	16	10	-	-	-	-	-	-	-	-
Imo	86	26	3	3	3	-	3	3	-	1
Jigawa	180	21	-	-	-	-	-	-	-	-
Kaduna	44	9	-	-	-	-	-	-	-	2
Kano	39	17	-	-	-	-	-	-	-	-
Katsina	171	31	-	-	-	-	-	-	-	2
Kebbi	79	12	-	-	-	-	-	-	-	1
Kogi	26	12	-	-	-	-	-	-	-	-
Kwara	52	9	1	1	1	-	1	1	-	-
Lagos	8	7	-	-	-	-	-	-	-	-
Nasarawa	34	11	-	-	-	-	-	-	-	-
Niger	43	13	-	1	1	-	-	-	-	-
Ogun	52	14	1	2	2	-	1	1	-	-
Ondo	104	13	1	4	1	-	3	3	-	-
Osun	27	12	2	2	2	-	2	2	-	-
Oyo	100	29	-	1	1	-	-	-	-	-
Plateau	93	15	1	1	1	-	1	1	-	-
Rivers	34	17	-	1	1	-	-	-	-	-
Sokoto	32	10	1	2	2	-	1	1	-	-
Taraba	68	15	1	1	1	-	1	1	-	2
Yobe	82	16	-	-	-	-	-	-	-	1
Zamfara	31	9	-	-	-	-	-	-	-	3
TOTAL	2,350	529 (68%)	17(2.2%)	29(1.3%)	26 (3.4%)	2 (0.1%)	18 (0.8%)	20 (0.9%)	0 (0%)	15 (0.6%)

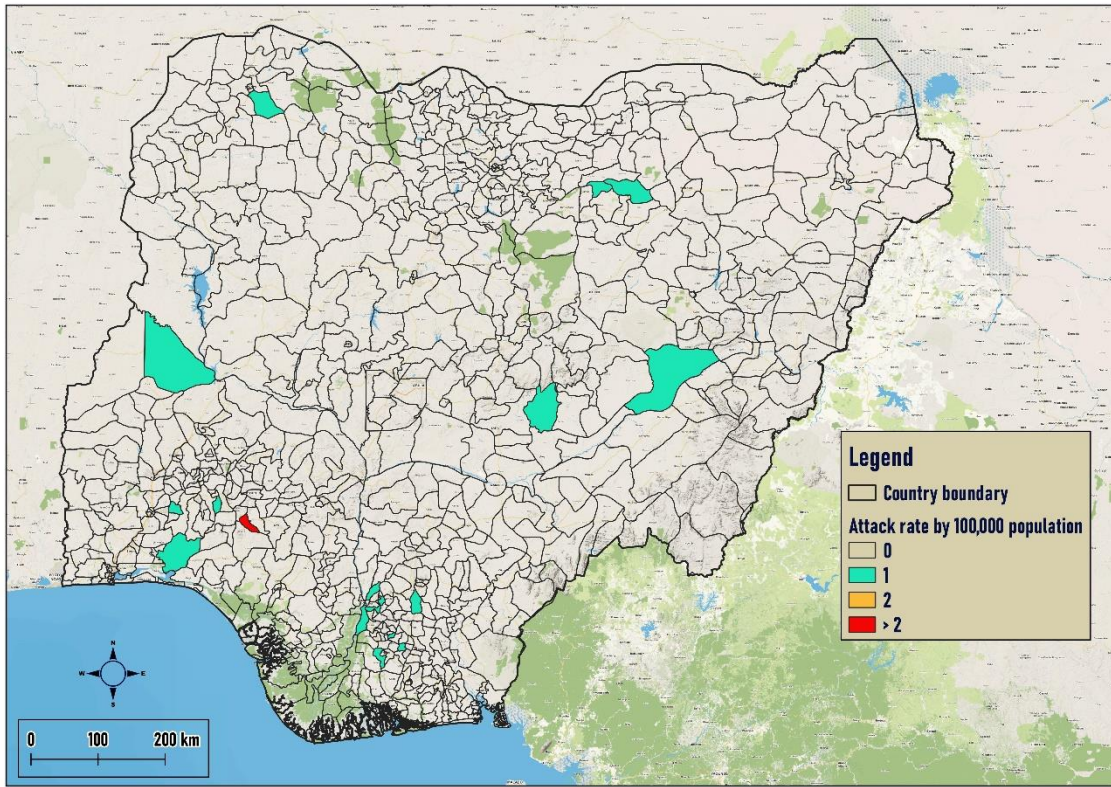


Figure 1: Map of Nigeria showing yellow fever outbreak attack rates in affected LGAs from January – November 2022

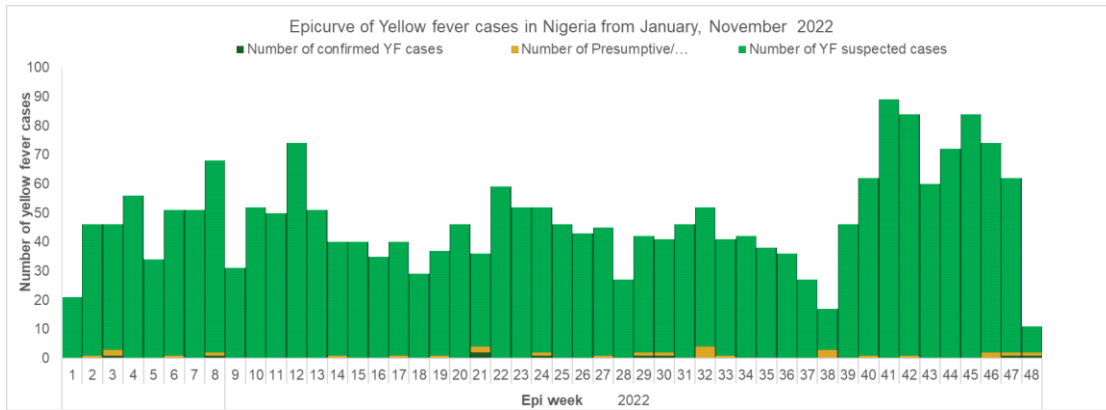


Figure 2: Epicurve of yellow fever cases in Nigeria from January – November 2022

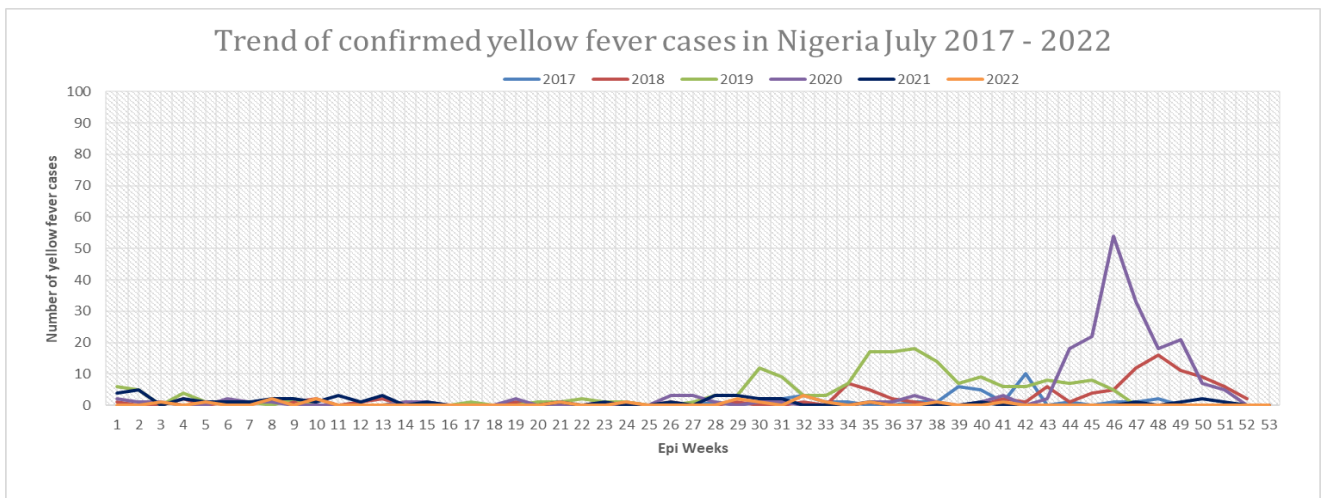


Figure 3: Trend of confirmed yellow fever cases in Nigeria 2017 – 2022

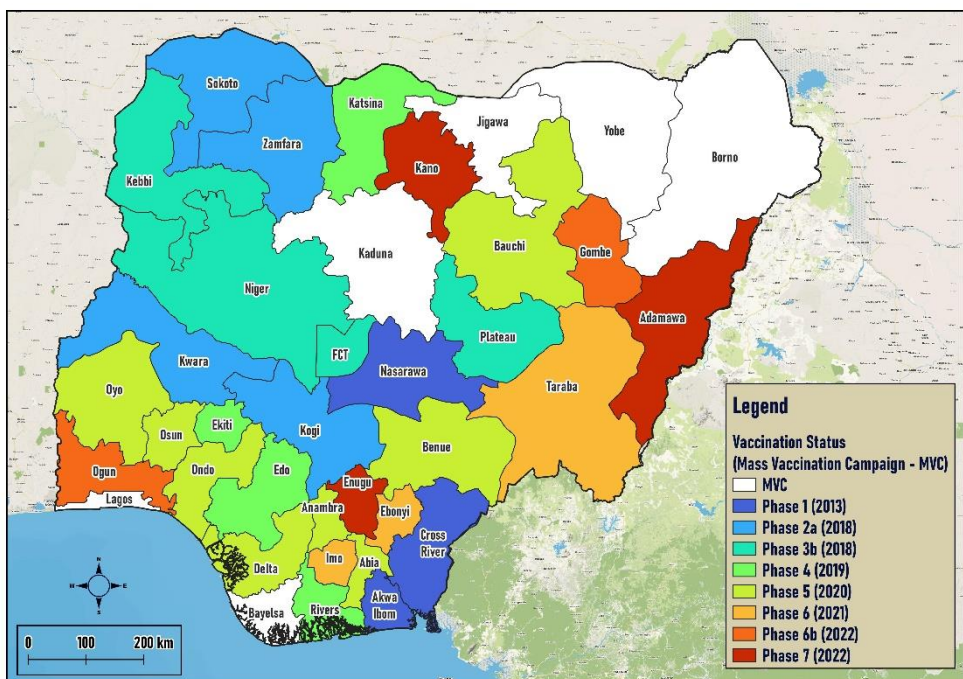


Figure 4: Map of Nigeria showing states and year of implementation of yellow fever mass vaccination campaigns from 2013 – 2022

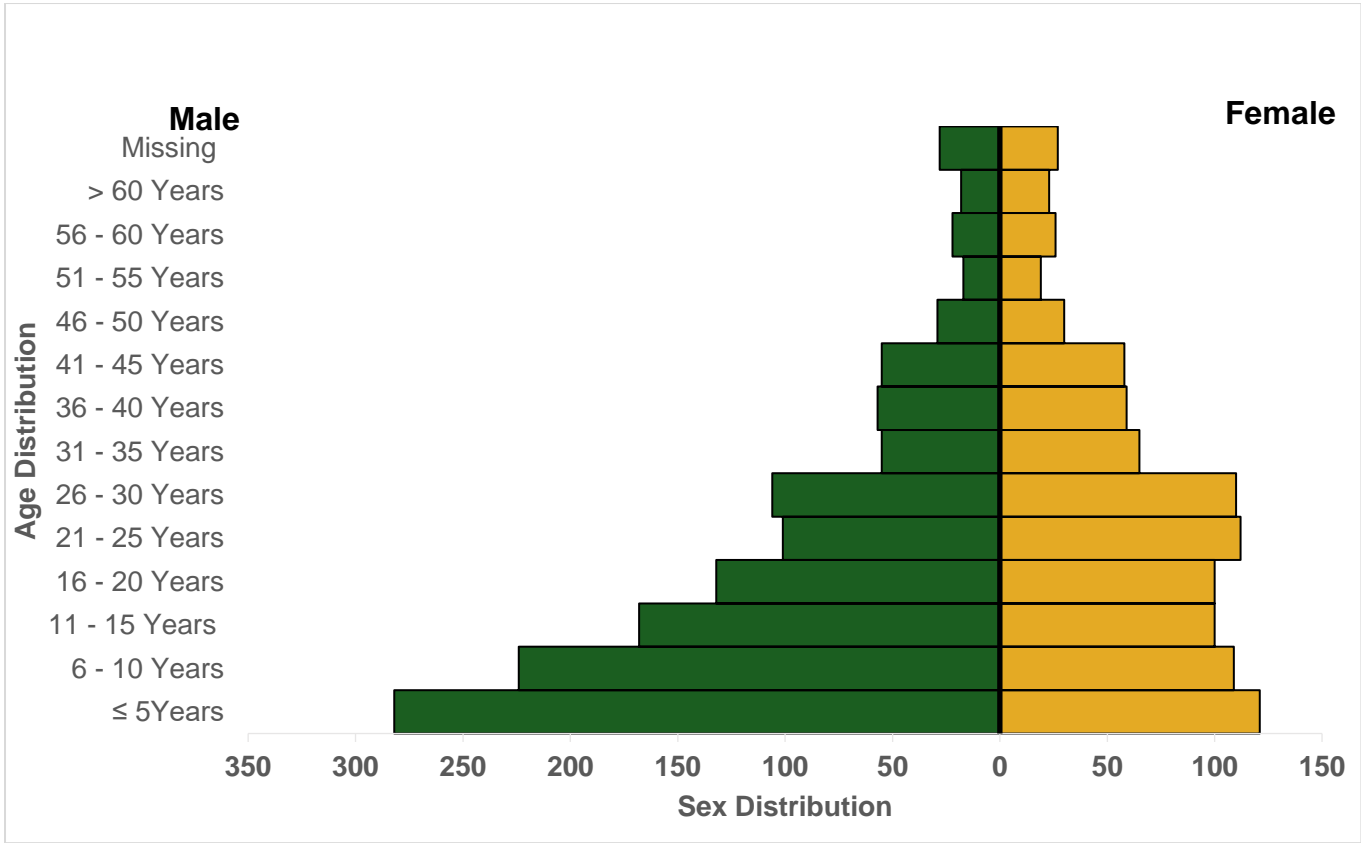


Figure 5: Age and sex distribution of yellow fever cases in Nigeria from January – November 2022.

Partners

