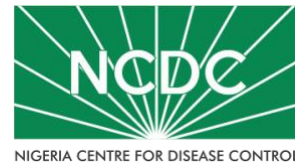


COVID-19 SITUATION REPORT

SITUATION REPORT 188

Thursday, 3rd September 2020



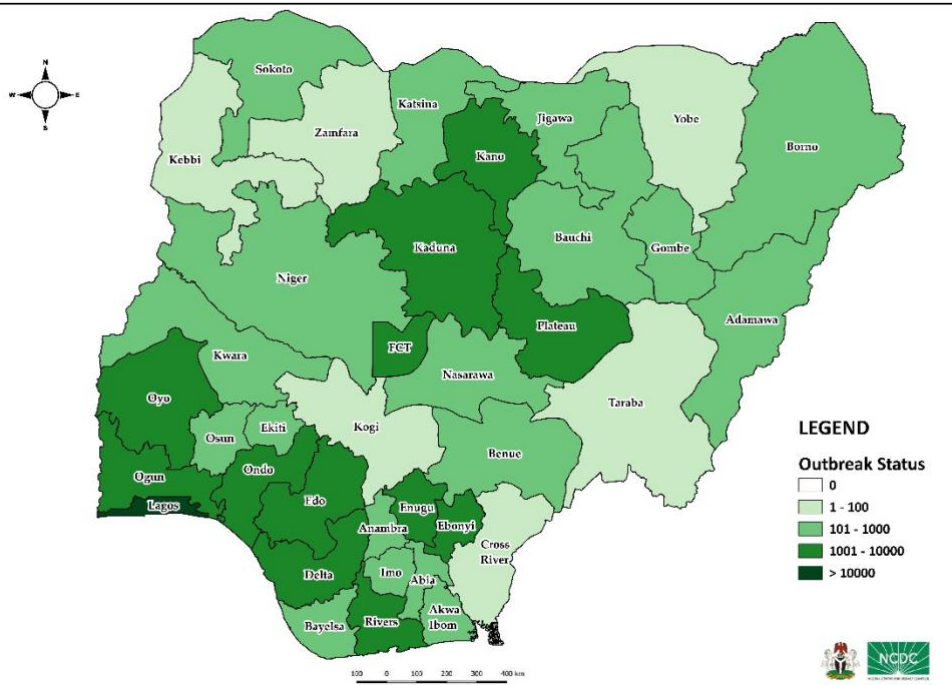
DATA AS REPORTED AND ACCURATE BY NCDC AS AT MIDNIGHT 3rd SEPTEMBER 2020

HIGHLIGHTS

- One hundred and twenty-four (**124**) confirmed cases were reported in the last 24 hours from **13** states – Lagos (42), FCT (25), Katsina (14), Kaduna (11), Kwara (8), Ondo (7), Delta (4), Anambra (3), Oyo (3), Edo (2), Ogun (2), Osun (2) and Cross River (1).
- One hundred and eighty-eight (**188**) discharges have been reported in the last 24 hours in **12** states – Plateau (79), Ogun (28), FCT (22), Anambra (13), Kano (10), Edo (8), Kaduna (8), Gombe (5), Rivers (5), Lagos (2), Osun (2) and Oyo (1).
- Twenty-one (**21**) deaths were reported in **two** states – Kaduna (20), and Anambra (1).
- All **36** states in Nigeria, and the FCT, have reported a confirmed case.

STATE OF THE NATION

Figure 1: Map of Nigeria showing 36 states and FCT affected by COVID-19



SITUATION UPDATES

Total (New in the last 24 hours)

SAMPLES TESTED

417,398 (4,133)

CONFIRMED CASES

54,587 (124)

AFFECTED STATES INCLUDING FCT

37

DISCHARGED CASES

42,627 (188)

CONFIRMED FATALITIES

1,048 (21)¹ – 1.9% CFR

DEMOGRAPHICS

MALE – 34,662 (63%)

FEMALE – 19,925 (37%)

MOST AFFECTED AGE GROUP

31 - 40 (25%)

PERSONS OF INTEREST

11,693 (Total)

11,645 (99.6% - Exceeded Follow Up)

PROVENANCE

TRAVEL HISTORY – 850 (1%)

CONTACTS – 12,867 (24%)

UNKNOWN EXPOSURE – 40,870 (75%)

GLOBAL UPDATES

TOTAL NUMBER OF CASES

25,884,895 (859,130 deaths)

COUNTRIES & TERRITORIES AFFECTED

216*

*Excluding the 2 International Conveyance

¹Includes backlog from Kaduna in the last one month

GENERAL FACT SHEET – DATA AS AT 3rd SEPTEMBER 2020

Table 1: States with reported laboratory-confirmed COVID-19 cases, recoveries, deaths and days since last reported case

STATES	CONFIRMED CASES		DISCHARGED CASES		DEATHS		TOTAL ACTIVE CASES	DAYS SINCE LAST REPORTED CASE
	TOTAL	NEW	TOTAL	NEW	TOTAL	NEW		
Lagos	18,219	42	15,233	2	202	0	2,784	0
FCT	5,238	25	1,585	22	60	0	3,593	0
Oyo	3,139	3	1,955	1	37	0	1,147	0
Plateau	2,708	0	1,638	79	30	0	1,040	1
Edo	2,592	2	2,354	8	100	0	138	0
Kaduna	2,174	11	2,051	8	32	20*	91	0
Rivers	2,168	0	2,008	5	57	0	103	1
Delta	1,756	4	1,595	0	48	0	113	0
Kano	1,727	0	1,591	10	54	0	82	3
Ogun	1,671	2	1,563	28	26	0	82	0
Ondo	1,550	7	1,380	0	32	0	138	0
Enugu	1,179	0	1,088	0	21	0	70	1
Ebonyi	1,005	0	941	0	27	0	37	1
Kwara	974	8	784	0	25	0	165	0
Katsina	810	14	457	0	24	0	329	0
Abia	798	0	712	0	8	0	78	1
Osun	790	2	743	2	17	0	30	0
Borno	741	0	671	0	36	0	34	3
Gombe	723	0	641	5	23	0	59	5
Bauchi	669	0	633	0	14	0	22	1
Imo	529	0	210	5	11	0	308	2
Benue	460	0	291	0	9	0	160	2
Nasarawa	434	0	298	0	12	0	124	5
Bayelsa	391	0	358	0	21	0	12	5
Jigawa	322	0	308	0	11	0	3	49
Akwa Ibom	280	0	238	0	8	0	34	1
Ekiti	278	0	219	0	5	0	54	1
Niger	243	0	216	0	12	0	15	3
Adamawa	228	0	180	0	15	0	33	3
Anambra	219	3	181	13	19	1	19	0
Sokoto	159	0	142	0	16	0	1	3
Kebbi	93	0	82	0	8	0	3	6
Taraba	87	0	73	0	5	0	9	9
Cross River	83	1	73	0	8	0	2	0
Zamfara	78	0	73	0	5	0	0	14
Yobe	67	0	59	0	8	0	0	35
Kogi	5	0	3	0	2	0	0	62
Total	54,587	124	42,627	188	1,048	21	10,912	

States, including FCT, are arranged in descending order by number of total confirmed cases and then alphabetical order

note

*Kaduna reports 20 deaths that occurred over the last month

SELECTED CHARTS

Figure 2: Daily Epidemic Curve of Confirmed Cases (WK9 – WK36)

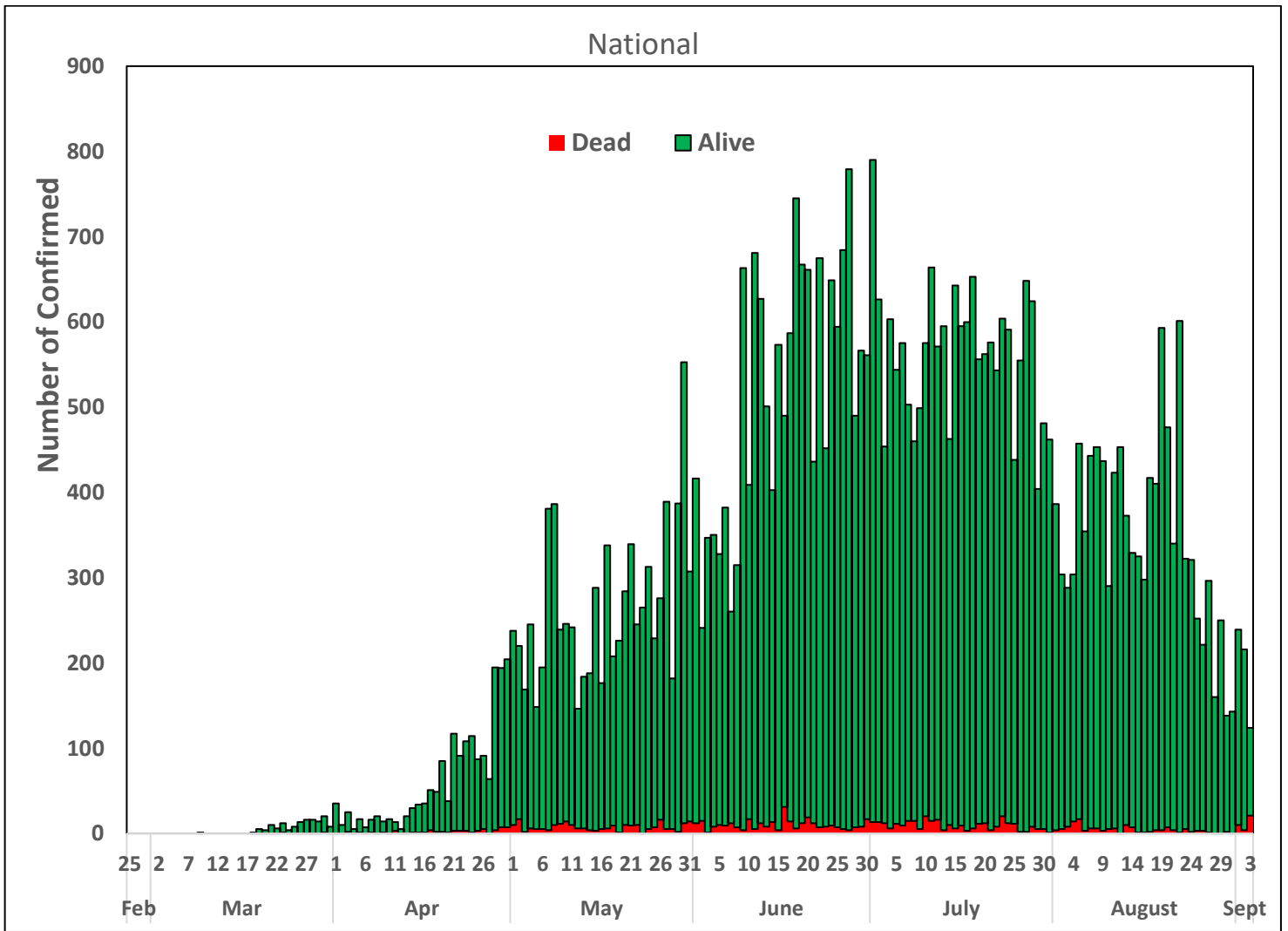
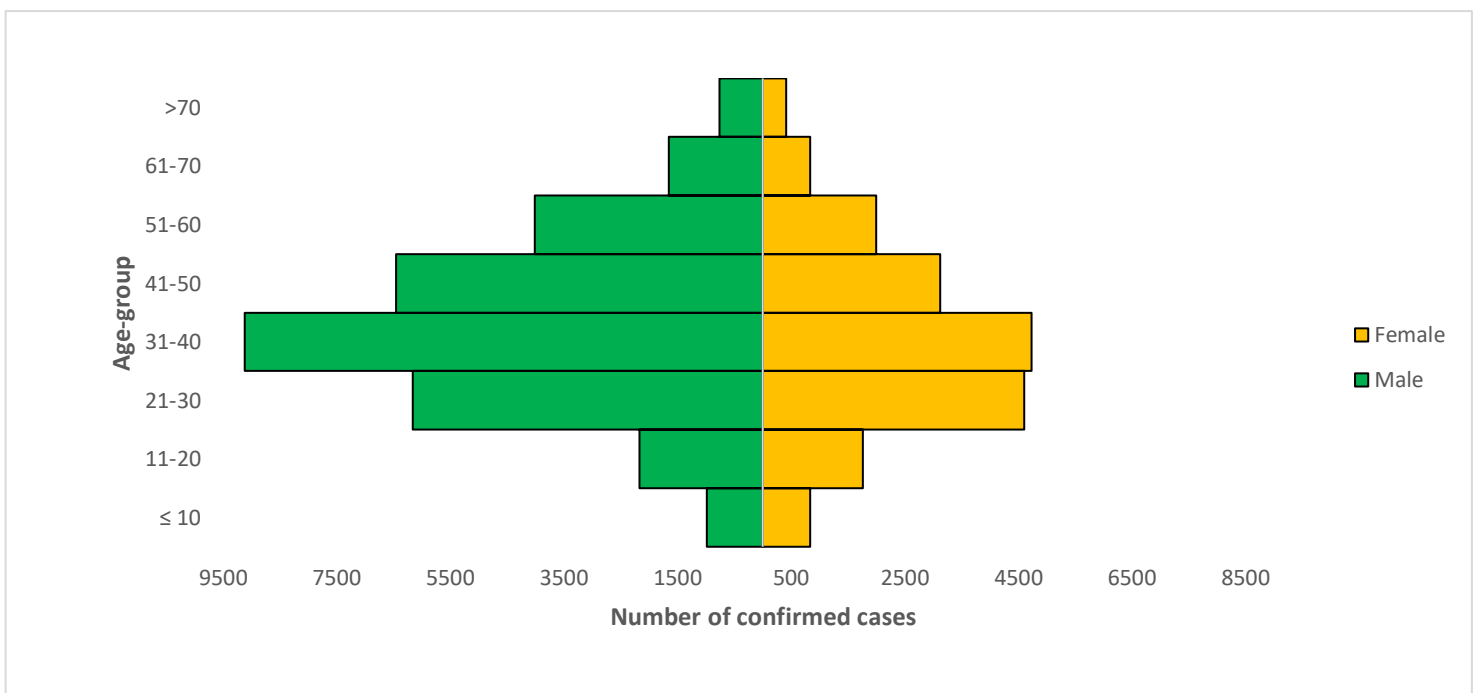


Figure 3: Age-Sex Distribution of Confirmed Cases (WK9 – WK36)



PREPAREDNESS

Since the confirmation of the first case on 27th February 2020, the NCDC has released advisories and statements to help Nigerians and affected groups in particular to respond to the pandemic

- NCDC recently published the first edition of a quick reference guide on setting up sample collection centre - [A step by step guide on setting up a sample collection centre](#)
- NCDC has launched an online course on [Infection, Prevention and Control \(IPC\) for COVID-19](#) NCDC eLearning platform
- Ahead of forthcoming elections in the country, NCDC has issued [Guidelines for Conducting Elections During the COVID-19 Outbreak in Nigeria](#).
- To protect our elders, and those with pre-existing medical conditions, NCDC has issued an [Advisory for Vulnerable Groups](#).
- NCDC has released [guidelines on the re-opening of places for worship](#).
- NCDC has released [Strategies to Improve Surveillance for COVID-19 Guidance for States](#)
- The Nigeria Police Force has released COVID-19 operational guidelines for the [Police and other Law Enforcement Agencies](#) in Nigeria
- Guidelines have been issued for the [safe transportation of remains of persons suspected or confirmed to have died of COVID-19](#)
- Information on diagnostics of the COVID-19 virus can be found in our [detailed FAQ document](#).
- To increase our testing capacity, NCDC has issued guidelines for the [integration of private labs](#).
- Guidelines for [businesses and employers](#) have been updated.
- NCDC has updated its [case definition](#) , [community case definition](#) and [case management guide](#).
- NCDC releases periodic [public health advisories](#) to Nigerians on the COVID-19 disease.
- To adhere to post-lockdown measures, NCDC has released an [advisory on the use of face masks](#), as well as information on the [Use of Cloth face masks](#) and [how to make your cloth face masks](#).
- NCDC has released guidelines for the [management of pregnant women and nursing mothers](#) during the pandemic.
- To address burials of loved ones who die from COVID-19, guidelines have been issued to advise on the [management of dead bodies](#).
- For health centres managing cases, the following documents have been released- a guideline for the [Rational Use of Personal Protective Equipment in the care of COVID-19 cases](#).
- As part of plans to increase the testing capacity of the country, the NCDC published a [National Strategy to Scale Up Access to Coronavirus Disease Testing in Nigeria](#) document.
- The Presidential Task Force has published policies and announcements on COVID-19 [available on the website of the Presidency](#) – including presidential addresses, task force updates and information on livelihood and economic support.

RESPONSE

On 28th February 2020, a multi-sectoral Emergency Operations Centre (EOC) was activated at Level 3 – the highest emergency level in Nigeria –led by NCDC in close coordination with the State Public Health EOCs (PHEOC).

- **Commenced testing at State Specialist Hospital, Jalingo, Taraba State**
- **Trained laboratory scientists on GeneXpert testing at the Federal Medical Centre Keffi, Nasarawa State**
- **Conducted Infection Prevention and Control (IPC) training for State Emergency Operation Centre team in Zamfara State**
- **Commenced perception survey to understand the perception of stakeholders on COVID-19, the risk to students and their roles when schools re-open**
- Ongoing country wide deployments of community volunteers (CVs) to intensify contact tracing and active case finding supported by various partners

- Ongoing optimisation and setting up of two new private laboratories Medic-aid, FCT and Clina Lancet, Lagos
- Engaged with 19 State Infection Prevention and Control focal persons regarding the upcoming partner supported training for 916 healthcare workers from Primary and Secondary healthcare facilities in various States
- All education materials can be found via www.covid19.ncdc.gov.ng