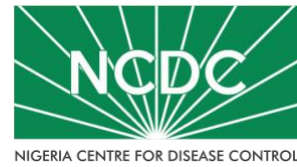


COVID-19 SITUATION REPORT

SITUATION REPORT 146

Thursday, 23rd July 2020



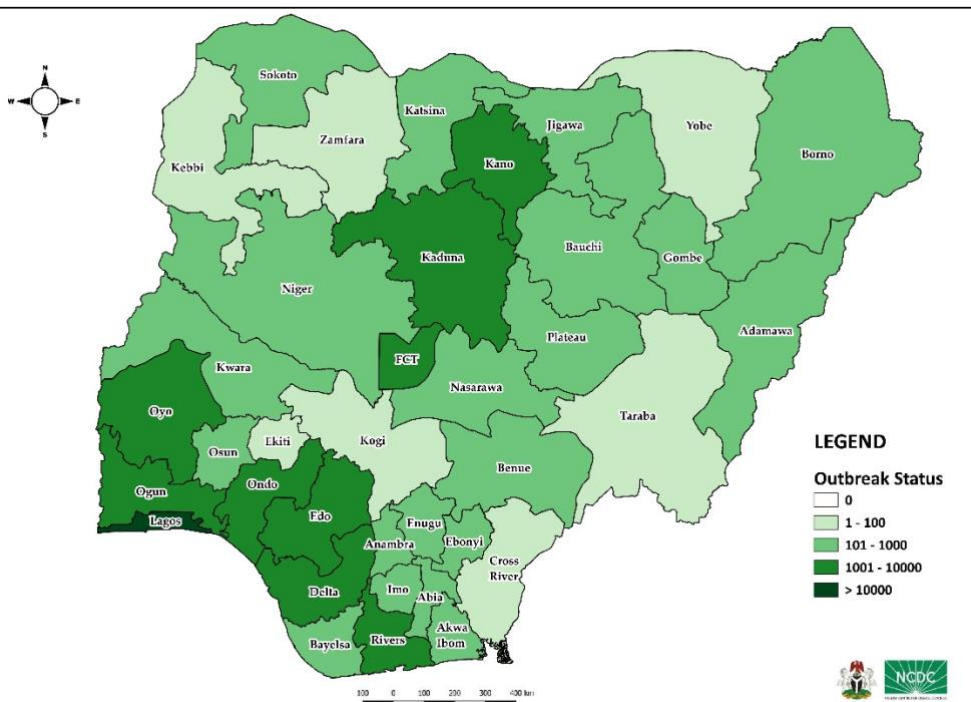
DATA AS REPORTED AND ACCURATE BY NCDC AS AT MIDNIGHT 23rd JULY 2020

HIGHLIGHTS

- Six hundred and four (**604**) confirmed cases were reported in the last 24 hours from **21** states – Lagos (203), Oyo (87), FCT (79), Edo (41), Osun (35), Ogun (24), Kaduna (22), Rivers (22), Akwa Ibom (20), Plateau (18), Delta (9), Ebonyi (9), Imo (8), Cross River (5), Enugu (5), Kano (5), Katsina (4), Nasarawa (3), Borno (2), Ekiti (2) and Bauchi (1).
- Two hundred and forty-six (**246**) cases were discharged in the last 24 hours in **13** states – Lagos (82), Kaduna (41), Plateau (36), Edo (21), Rivers (18), Kano (13), Imo (8), Gombe (6), FCT (5), Kebbi (5), Ogun (5), Ondo (5) and Ebonyi (1).
- Twenty (**20**) deaths were recorded in the last 24 hours in **five** states – Lagos (15), Akwa Ibom (2), Ebonyi (1), Kwara (1) and Plateau (1).
- All **36** states in Nigeria, and the FCT, have reported a confirmed case.

STATE OF THE NATION

Figure 1: Map of Nigeria showing 36 states and FCT affected by COVID-19



SITUATION UPDATES

Total (New in the last 24 hours)

SAMPLES TESTED

256,038 (4,145)

CONFIRMED CASES

38,948 (604)

AFFECTED STATES INCLUDING FCT

37

DISCHARGED CASES

16,061 (246)

CONFIRMED FATALITIES

833 (20) – 2.1% CFR

DEMOGRAPHICS

MALE – 25,098 (64%)

FEMALE – 13,850 (36%)

MOST AFFECTED AGE GROUP

31 - 40 (25%)

PERSONS OF INTEREST

11,077 (Total)

10,902 (98.4% - Exceeded Follow Up)

PROVENANCE

TRAVEL HISTORY – 719 (2%)

CONTACTS – 9,656 (25%)

UNKNOWN EXPOSURE – 28,573 (73%)

GLOBAL UPDATES

TOTAL NUMBER OF CASES

15,012,731 (619,150 deaths)

COUNTRIES & TERRITORIES AFFECTED*

213

*Excluding the 2 International Conveyance

GENERAL FACT SHEET – DATA AS AT 23rd JULY 2020

Table 1: States with reported laboratory-confirmed COVID-19 cases, recoveries, deaths and days since last reported case

STATES	CONFIRMED CASES		DISCHARGED CASES		DEATHS		TOTAL ACTIVE CASES	DAYS SINCE LAST REPORTED CASE
	CUMULATIVE	NEW	CUMULATIVE	NEW	CUMULATIVE	NEW		
Lagos	14,009	203	2,075	82	192	15 ¹	11,742	0
FCT	3,376	79	982	5	40	0	2,354	0
Oyo	2,306	87	1,120	0	20	0	1,166	0
Edo	2,105	41	1,346	21	72	0	687	0
Rivers	1,587	22	1,069	18	49	0	469	0
Delta	1,453	9	634	0	39	0	780	0
Kano	1,452	5	1,165	13	53	0	234	0
Kaduna	1,289	22	980	41	12	0	297	0
Ogun	1,227	24	922	5	23	0	282	0
Ondo	1,001	0	148	5	22	0	831	1
Plateau	780	18	385	36	19	1	376	0
Enugu	726	5	371	0	17	0	338	0
Ebonyi	724	9	577	1	21	1	126	0
Katsina	717	4	441	0	23	0	253	0
Kwara	707	0	188	0	15	1	504	1
Borno	605	2	521	0	35	0	49	0
Gombe	558	0	521	6	23	0	14	3
Bauchi	535	1	506	0	13	0	16	0
Abia	527	0	391	0	4	0	132	1
Imo	462	8	95	8	9	0	358	0
Osun	394	35	155	0	10	0	229	0
Bayelsa	326	0	205	0	21	0	100	1
Jigawa	322	0	308	0	11	0	3	7
Benue	294	0	53	0	6	0	235	3
Nasarawa	292	3	113	0	8	0	171	0
Akwa Ibom	196	20	121	0	5	2	70	0
Niger	166	0	112	0	9	0	45	3
Sokoto	153	0	137	0	16	0	0	19
Anambra	132	0	68	0	12	0	52	3
Adamawa	115	0	85	0	9	0	21	5
Kebbi	90	0	79	5	7	0	4	2
Ekiti	88	2	47	0	2	0	39	0
Zamfara	77	0	71	0	5	0	1	5
Yobe	64	0	53	0	8	0	3	5
Taraba	54	0	11	0	0	0	43	2
Cross River	34	5	3	0	1	0	30	0
Kogi	5	0	3	0	2	0	0	20
Total	38,948	604	16,061	246	833	20	22,054	

States, including FCT, are arranged in descending order by number of total confirmed cases and then alphabetical order

notes

¹- Includes previously unreported deaths

SELECTED CHARTS

Figure 2: Daily Epidemic Curve of Confirmed Cases (WK9 – WK30)

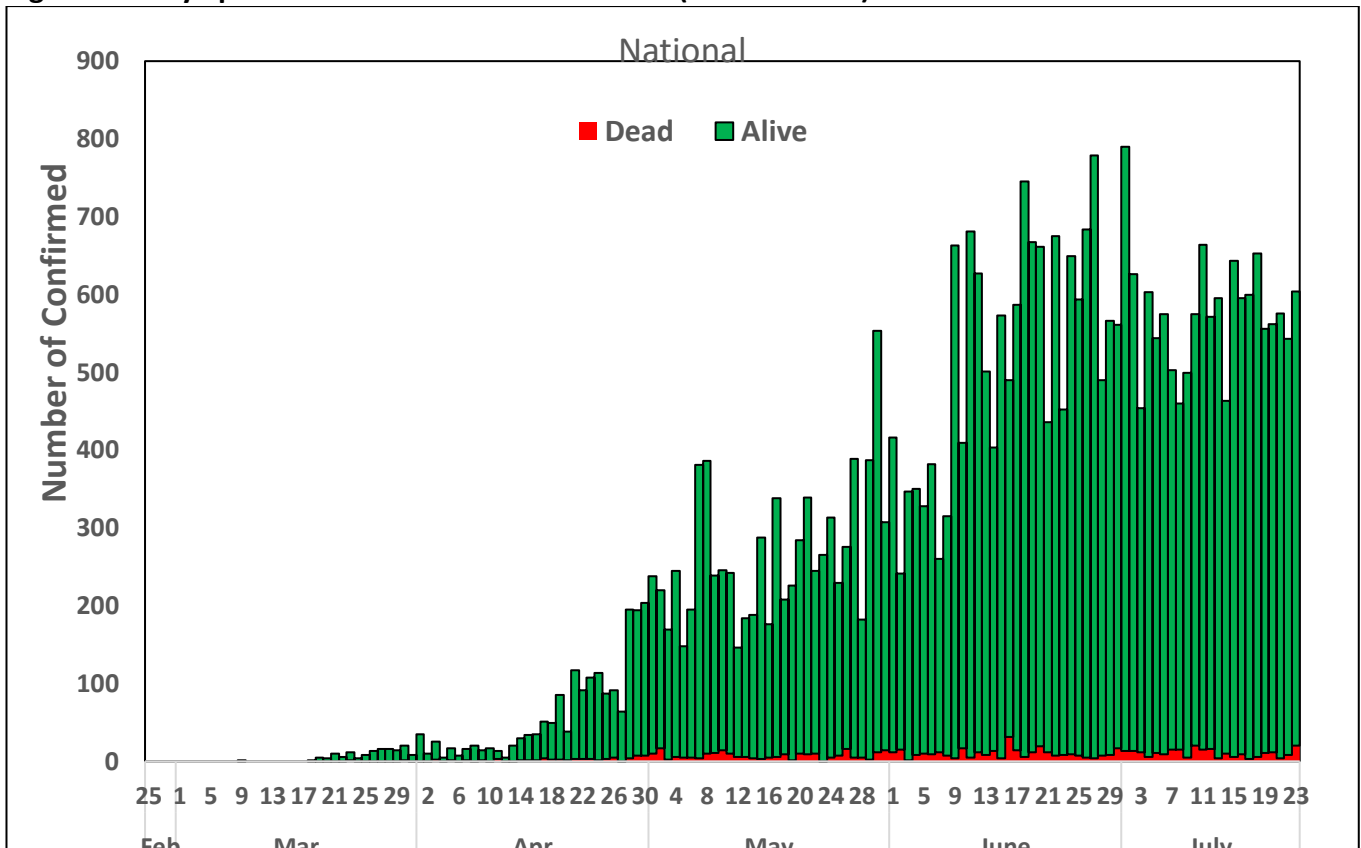
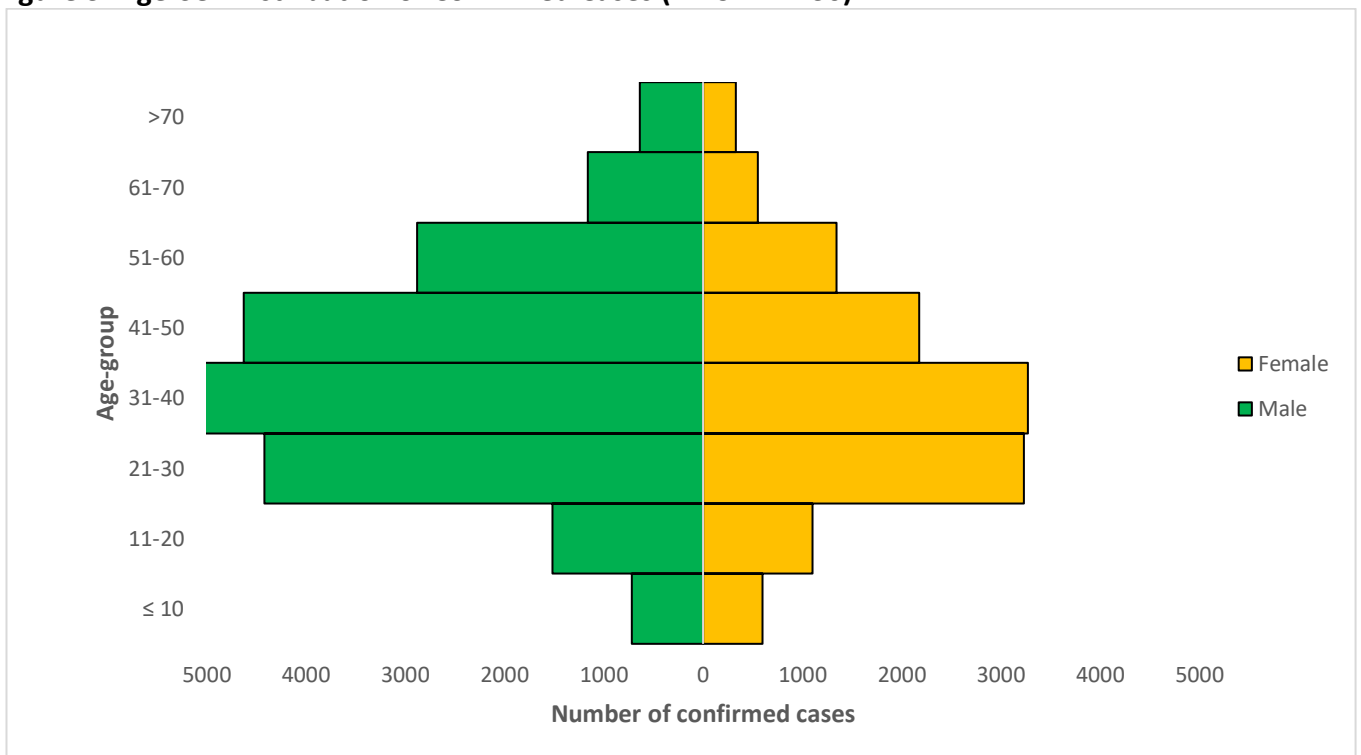


Figure 3: Age-Sex Distribution of Confirmed Cases (WK9 – WK30)



PREPAREDNESS

Since the confirmation of the first case on 27th February 2020, the NCDC has released advisories and statements to help Nigerians and affected groups in particular to respond to the pandemic

- NCDC has launched an online course on [Infection, Prevention and Control \(IPC\) for COVID-19](#) NCDC eLearning platform
- Ahead of forthcoming elections in the country, NCDC has issued [Guidelines for Conducting Elections During the COVID-19 Outbreak in Nigeria](#).
- To protect our elders, and those with pre-existing medical conditions, NCDC has issued an [Advisory for Vulnerable Groups](#).
- NCDC has released [guidelines on the re-opening of places for worship](#).
- The Nigeria Police Force has released COVID-19 operational guidelines for the [Police and other Law Enforcement Agencies](#) in Nigeria
- NCDC and the Department of Hospital Services (Federal Ministry of Health) have updated the [case management guidelines](#) (version 3) with reviewed changes such as the discharge criteria and medication being used for the treatment of cases
- Guidelines have been issued for the [safe transportation of remains of persons suspected or confirmed to have died of COVID-19](#)
- Information on diagnostics of the COVID-19 virus can be found in our [detailed FAQ document](#).
- To increase our testing capacity, NCDC has issued guidelines for the [integration of private labs](#).
- Guidelines for [businesses and employers](#) have been updated.
- NCDC has updated its [case definition](#) , [community case definition](#) and [case management guide](#).
- NCDC releases periodic [public health advisories](#) to Nigerians on the COVID-19 disease.
- To adhere to post-lockdown measures, NCDC has released an [advisory on the use of face masks](#), as well as information on the [Use of Cloth face masks](#) and [how to make your cloth face masks](#).
- NCDC has released guidelines for the [management of pregnant women and nursing mothers](#) during the pandemic.
- To address burials of loved ones who die from COVID-19, guidelines have been issued to advise on the [management of dead bodies](#).
- For health centres managing cases, the following documents have been released- a guideline for the [Rational Use of Personal Protective Equipment in the care of COVID-19 cases](#).
- As part of plans to increase the testing capacity of the country, the NCDC published a [National Strategy to Scale Up Access to Coronavirus Disease Testing in Nigeria](#) document.
- The Presidential Task Force has published policies and announcements on COVID-19 [available on the website of the Presidency](#) – including presidential addresses, task force updates and information on livelihood and economic support.

RESPONSE

On 28th February 2020, a multi-sectoral Emergency Operations Centre (EOC) was activated at Level 3 – the highest emergency level in Nigeria –led by NCDC in close coordination with the State Public Health EOCs (PHEOC).

- **Trained 35 healthcare workers on Infection Prevention and Control in Dengi General Hospital (GH) in Plateau State**
- **Supportive supervision provided to treatment centres in Plateau State**
- **Deployed Personal Protective Equipment (PPE) and commodities to the South Eastern States: Abia, Enugu, Imo, Anambra and Ebonyi**
- Received a total of 358 Persons of Interest (POIs)/returnees from- France (43), Canada (55), Saudi Arabia (117) and Sudan (143) on 19th July 2020 in the FCT
- All POIs/returnees were received, screened and given the travellers kit on arrival at the Nnamdi Azikiwe International Airport Abuja (NAIA)
- All returnees were issued COVID-19 test appointment
- Completed the first batch of 12 states Training of Trainer (TOT) on contact tracing and active case search

- Ongoing training of laboratory personnel on testing using Abbott platform in Benue and Yobe States
- Ongoing planning of Training of Trainer (TOT) on community-based Infection Prevention and Control (IPC) management for COVID-19 with Lagos State
- Conducted training on IPC for private hospitals health workers in Lagos
- Distribution of Personal Protective Equipment (PPE) and response material to the North Central: Niger, Nasarawa, Plateau, Benue, Kwara, Kogi States and FCT
- All education materials can be found via www.covid19.ncdc.gov.ng