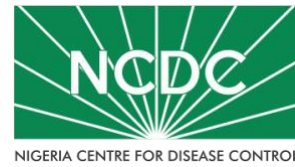


COVID-19 SITUATION REPORT

SITUATION REPORT 190

Saturday, 5th September 2020



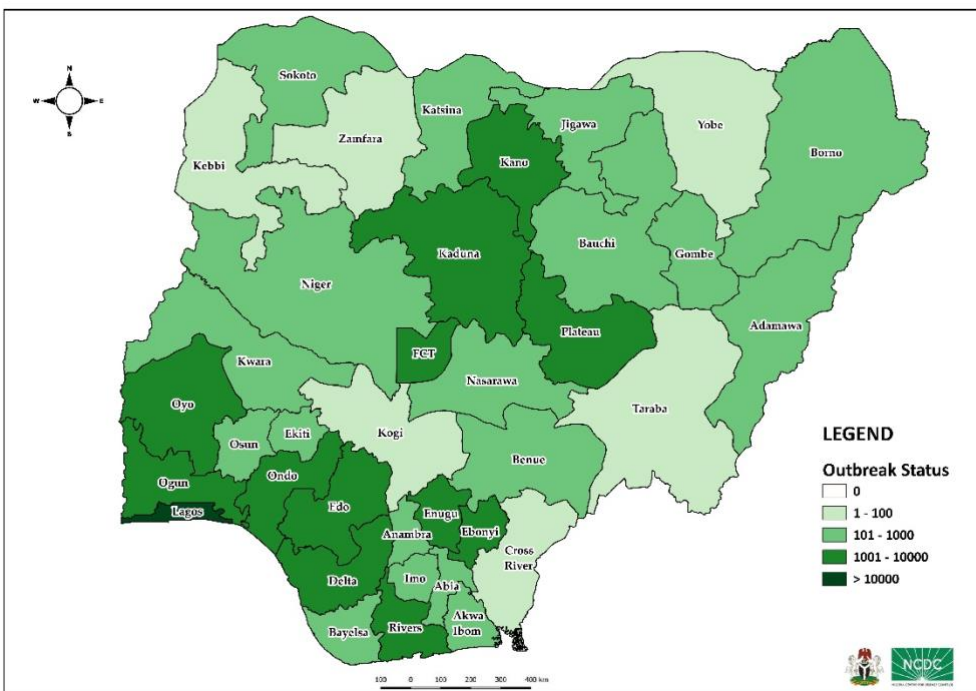
DATA AS REPORTED AND ACCURATE BY NCDC AS AT MIDNIGHT 5th SEPTEMBER 2020

HIGHLIGHTS

- One hundred and sixty-two (**162**) confirmed cases were reported in the last 24 hours from **15** states – Lagos (53), Gombe (21), Oyo (19), Delta (12), Ondo (11), Plateau (10), Ebonyi (9), FCT (6), Kwara (6), Kaduna (5), Rivers (3), Ogun (2), Anambra (2), Imo (2) and Ekiti (1).
- One hundred and six (**106**) discharges have been reported in the last 24 hours in **10** states – FCT (19), Ondo (18), Rivers (17), Ebonyi (15), Kaduna (15), Delta (8), Osun (8), Ekiti (3), Gombe (2) and Oyo (1).
- Three (**3**) deaths were reported in the last 24 hours in **two** states – FCT (2), Ebonyi (1).
- All **36** states in Nigeria, and the FCT, have reported a confirmed case.

STATE OF THE NATION

Figure 1: Map of Nigeria showing 36 states and FCT affected by COVID-19



SITUATION UPDATES

Total (New in the last 24 hours)

SAMPLES TESTED

422,100 (1,557)

CONFIRMED CASES

54,905 (162)

AFFECTED STATES INCLUDING FCT

37

DISCHARGED CASES

42,922 (106)

CONFIRMED FATALITIES

1,054 (3) – 1.9% CFR

DEMOGRAPHICS

MALE – 34,880 (64%)

FEMALE – 20,025 (36%)

MOST AFFECTED AGE GROUP

31 - 40 (25%)

PERSONS OF INTEREST

11,693 (Total)

11,645 (99.6% - Exceeded Follow Up)

PROVENANCE

TRAVEL HISTORY – 850 (1%)

CONTACTS – 12,924 (24%)

UNKNOWN EXPOSURE – 41,131 (75%)

GLOBAL UPDATES

TOTAL NUMBER OF CASES

26,468,031 (871,166 deaths)

COUNTRIES & TERRITORIES AFFECTED

216*

*Excluding the 2 International Conveyance

GENERAL FACT SHEET – DATA AS AT 5th SEPTEMBER 2020

Table 1: States with reported laboratory-confirmed COVID-19 cases, recoveries, deaths and days since last reported case

STATES	CONFIRMED CASES		DISCHARGED CASES		DEATHS		TOTAL ACTIVE CASES	DAYS SINCE LAST REPORTED CASE
	TOTAL	NEW	TOTAL	NEW	TOTAL	NEW		
Lagos	18,308	53	15,233	0	202	0	2,873	0
FCT	5,279	6	1,610	19	65	2	3,604	0
Oyo	3,187	19	1,959	1	37	0	1,191	0
Plateau	2,720	10	1,690	0	30	0	1,000	0
Edo	2,594	0	2,361	0	100	0	133	1
Kaduna	2,189	5	2,086	15	32	0	71	0
Rivers	2,175	3	2,040	17	57	0	78	0
Delta	1,768	12	1,603	8	48	0	117	0
Kano	1,727	0	1,601	0	54	0	72	5
Ogun	1,678	2	1,597	0	26	0	55	0
Ondo	1,561	11	1,398	18	32	0	131	0
Enugu	1,184	0	1,088	0	21	0	75	1
Ebonyi	1,014	9	956	15	28	1	30	0
Kwara	982	6	794	0	25	0	163	0
Katsina	812	0	457	0	24	0	331	1
Abia	807	0	712	0	8	0	87	1
Osun	795	0	752	8	17	0	26	1
Gombe	744	21	643	2	23	0	78	0
Borno	741	0	671	0	36	0	34	5
Bauchi	669	0	637	0	14	0	18	3
Imo	534	2	210	0	11	0	313	0
Benue	460	0	291	0	9	0	160	4
Nasarawa	437	0	298	0	12	0	127	1
Bayelsa	391	0	360	0	21	0	10	7
Jigawa	322	0	308	0	11	0	3	51
Ekiti	282	1	247	3	5	0	30	0
Akwa Ibom	280	0	238	0	8	0	34	3
Niger	244	0	216	0	12	0	16	1
Adamawa	228	0	180	0	15	0	33	5
Anambra	221	2	181	0	19	0	21	0
Sokoto	159	0	142	0	16	0	1	5
Kebbi	93	0	82	0	8	0	3	8
Taraba	87	0	73	0	5	0	9	11
Cross River	83	0	73	0	8	0	2	2
Zamfara	78	0	73	0	5	0	0	16
Yobe	67	0	59	0	8	0	0	37
Kogi	5	0	3	0	2	0	0	64
Total	54,905	162	42,922	106	1,054	3	10,929	

States, including FCT, are arranged in descending order by number of total confirmed cases and then alphabetical order

SELECTED CHARTS

Figure 2: Daily Epidemic Curve of Confirmed Cases (WK9 – WK36)

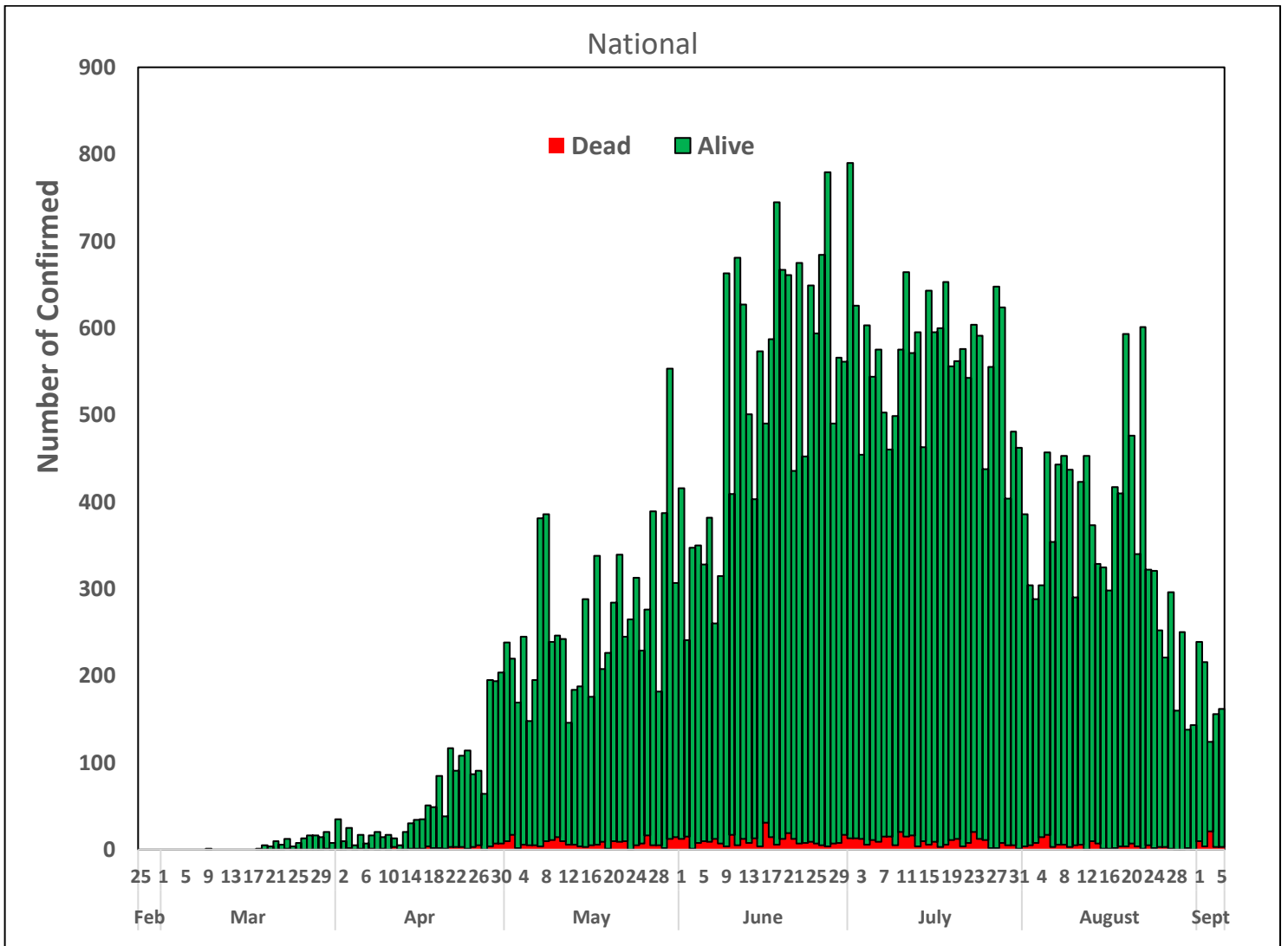
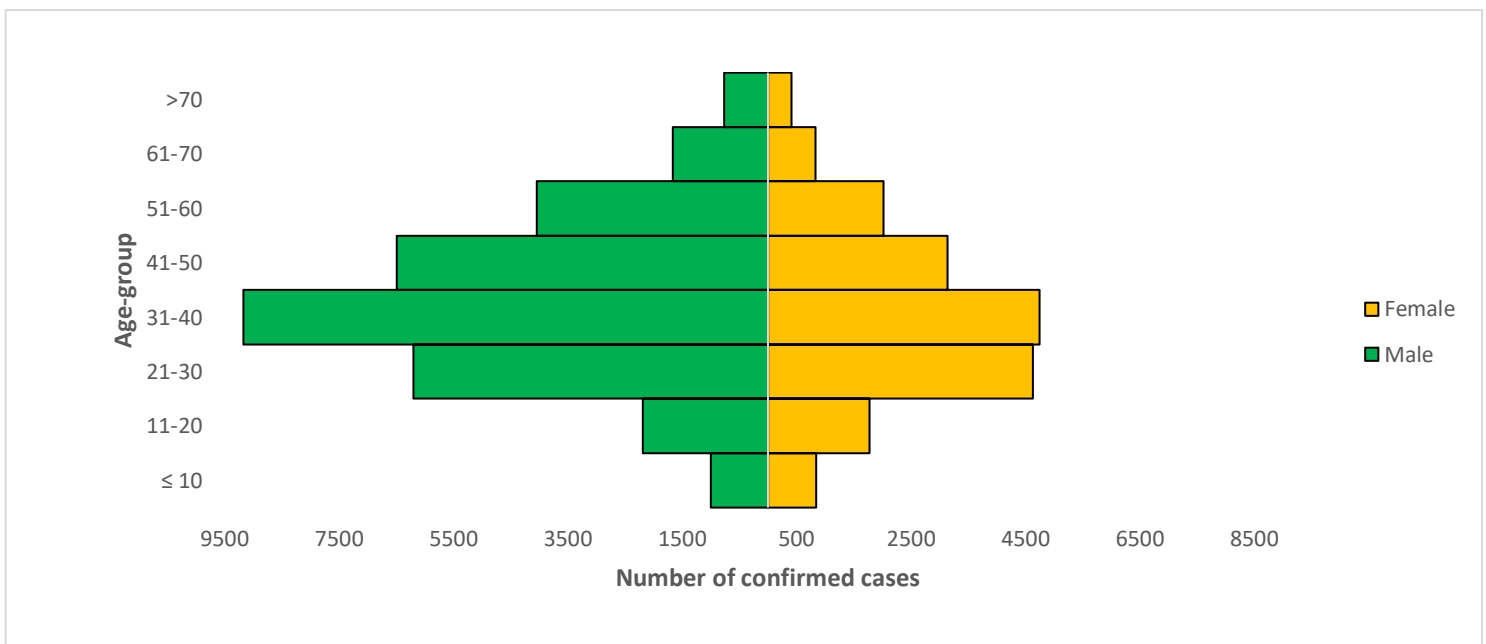


Figure 3: Age-Sex Distribution of Confirmed Cases (WK9 – WK36)



PREPAREDNESS

Since the confirmation of the first case on 27th February 2020, the NCDC has released advisories and statements to help Nigerians and affected groups in particular to respond to the pandemic

- NCDC recently published the first edition of a quick reference guide on setting up sample collection centre - [A step by step guide on setting up a sample collection centre](#)
- NCDC has launched an online course on [Infection, Prevention and Control \(IPC\) for COVID-19](#) NCDC eLearning platform
- Ahead of forthcoming elections in the country, NCDC has issued [Guidelines for Conducting Elections During the COVID-19 Outbreak in Nigeria](#).
- To protect our elders, and those with pre-existing medical conditions, NCDC has issued an [Advisory for Vulnerable Groups](#).
- NCDC has released [guidelines on the re-opening of places for worship](#).
- NCDC has released [Strategies to Improve Surveillance for COVID-19 Guidance for States](#)
- The Nigeria Police Force has released COVID-19 operational guidelines for the [Police and other Law Enforcement Agencies](#) in Nigeria
- Guidelines have been issued for the [safe transportation of remains of persons suspected or confirmed to have died of COVID-19](#)
- Information on diagnostics of the COVID-19 virus can be found in our [detailed FAQ document](#).
- To increase our testing capacity, NCDC has issued guidelines for the [integration of private labs](#).
- Guidelines for [businesses and employers](#) have been updated.
- NCDC has updated its [case definition](#) , [community case definition](#) and [case management guide](#).
- NCDC releases periodic [public health advisories](#) to Nigerians on the COVID-19 disease.
- To adhere to post-lockdown measures, NCDC has released an [advisory on the use of face masks](#), as well as information on the [Use of Cloth face masks](#) and [how to make your cloth face masks](#).
- NCDC has released guidelines for the [management of pregnant women and nursing mothers](#) during the pandemic.
- To address burials of loved ones who die from COVID-19, guidelines have been issued to advise on the [management of dead bodies](#).
- For health centres managing cases, the following documents have been released- a guideline for the [Rational Use of Personal Protective Equipment in the care of COVID-19 cases](#).
- As part of plans to increase the testing capacity of the country, the NCDC published a [National Strategy to Scale Up Access to Coronavirus Disease Testing in Nigeria](#) document.
- The Presidential Task Force has published policies and announcements on COVID-19 [available on the website of the Presidency](#) – including presidential addresses, task force updates and information on livelihood and economic support.

RESPONSE

On 28th February 2020, a multi-sectoral Emergency Operations Centre (EOC) was activated at Level 3 – the highest emergency level in Nigeria –led by NCDC in close coordination with the State Public Health EOCs (PHEOC).

- **Currently supporting states plans for setting up of sample collection sites**
- **Trained Infection Prevention and Control (IPC) focal persons from Secondary Healthcare facilities in Adamawa State**
- **Conducted risk communication training for Ward Focal Persons (WFPs) and Community Informants (CIs) in Delta State**
- Ongoing training of staff at GeneXpert laboratories across the country
- Conducted sensitisation for civil society organisations (CSOs) in Katsina State
- Working with NCDC Technical Advisors in the states to strengthen mobilisation of partners` support for further strengthening of COVID-19 grass root interventions
- All education materials can be found via www.covid19.ncdc.gov.ng