

YELLOW FEVER SITUATION REPORT



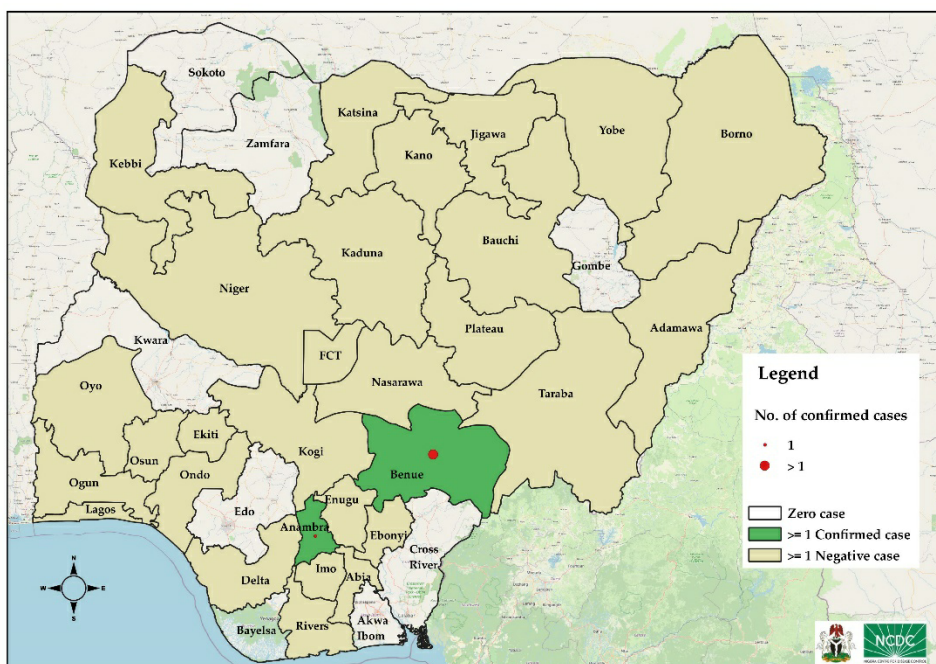
Serial Number: 005	August 2021 Monthly Sitrep
Epi Week:	31 - 34 as at 31 st August 2021
Reporting Month:	August, 2021

REPORTING MONTH: JULY 2021

HIGHLIGHTS

REPORTING PERIOD: AUGUST 1ST – 31ST, 2021

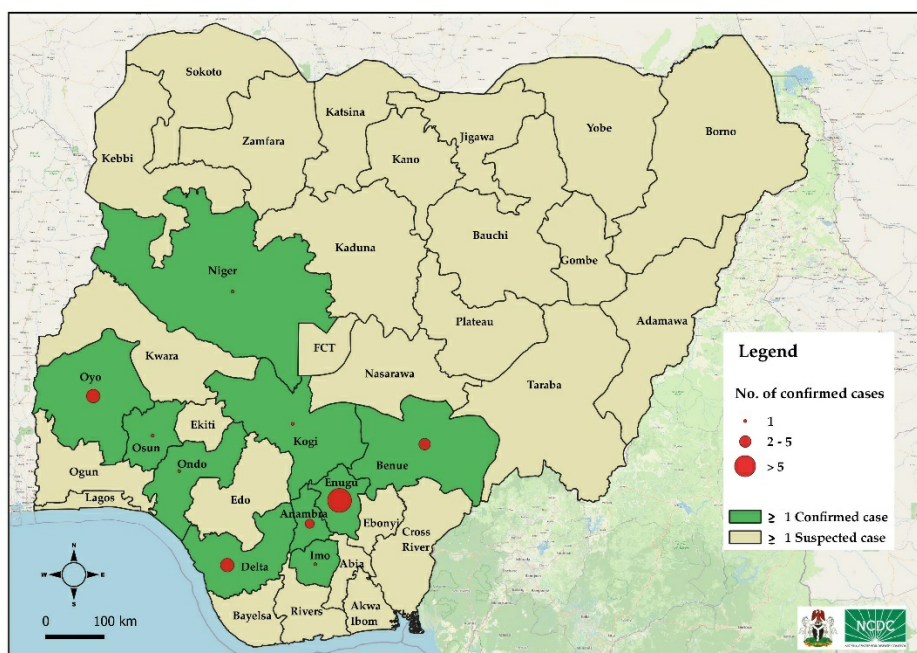
- The Nigeria Centre for Disease Control (NCDC) continues to monitor reports of yellow fever cases in Nigeria.
- A total of 230 suspected cases were reported from 139 Local Government Areas (LGAs) across 28 states: Abia (8), Adamawa (6), Anambra (20), Bauchi (18), Benue (6), Borno (17), Delta (1), Ebonyi (7), Ekiti (3), Enugu (14), FCT (2), Imo (12), Kaduna (1), Kano (4), Katsina (46), Kebbi (5), Kogi (2), Lagos (1), Nasarawa (4), Niger (5), Ogun (7), Ondo (14), Oyo (7), Plateau (8), Rivers (5), Taraba (3) and yobe (4).
- A total of 11 presumptive positive results were recorded from Central Public Health Laboratory (CPHL) Lagos (1), and Maitama District Hospital (MDH) Abuja (4), University of Nigeria Teaching Hospital (UNTH) Enugu (5), Yusuf Danshoho Memorial Hospital (YDMH) Kaduna (1). These cases were reported from Anambra – 3 (Idemili South (1), Nnewi North (1), Awka South (1); Benue – 3 (Gwer West), Enugu -1 (Ezeagu); Imo -1 (Mbailotli), Kebbi -1(Fakai), Kogi -1 (Okene); Ondo -1 (Ifedore),
- Four (4) new confirmed cases from Institut Pasteur (IP) Dakar from in two states: Anambra -1



230 SUSPECTED CASES	28 STATES WITH SUSPECTED CASES
4 CONFIRMED CASES	2 STATES WITH CONFIRMED CASES
0 DEATHS IN CONFIRMED CASES	0 STATES WITH DEATHS IN CONFIRMED

CUMMULATIVE FOR 1ST JANUARY– 31TH AUGUST, 2021

- Cumulatively from 1st January – 31st August 2021, a total of 1312 suspected cases have been reported from 37 states including FCT in 367 LGAs
- The cases were reported from the following states: Abia (35), Adamawa [32], Akwa Ibom [3], Anambra [110], Bauchi [63], Bayelsa [20], Benue [29], Borno [148], Cross River [13], Delta [27], Ebonyi (26), Edo [36], Ekiti [7], Enugu [88], FCT Abuja [10], Gombe (1), Imo [52], Jigawa [30], Kaduna (2), Kano [20], Katsina [150], Kebbi [32], Kogi [15], Kwara [25], Lagos [5], Nasarawa [29], Niger [41], Ogun [24], Ondo [39], Osun [15], Oyo [46], Plateau [25], Rivers [10], Sokoto [7], Taraba [17], Yobe [67] and Zamfara [13] States
- All the suspected cases were reported from 395 LGAs across the 36 states and FCT
- Total of 57 presumptive positive and 13 inconclusive samples were recorded from the Nigeria Laboratories
- Presumptive positives were recorded from CPHL Lagos (32), NRL Abuja (7), MDH Abuja (8), UNTH Enugu (7) and YDMH (3); these cases were reported from Anambra (12), Bauchi (2), Benue (5), Borno (5), Delta (5), Edo (1), Enugu (14), Imo (2), Kano (1), Katsina (1), Kebbi (1), Kogi (1), Kwara (1), Niger (1), Ondo (1), Oyo (4).
- Inconclusive results were reported CPHL (6), NRL (2), MDH (2), AND YDMH Kaduna (3), These cases were reported from Benue (1), Borno (1), Ebonyi (1), Edo (1), Enugu (2), Katsina (2), Nasarawa (1), Osun (1), Ondo (1), Yobe (1) and Zamfara (1). These cases have been sent to IP Dakar for confirmation.
- Thirty-one (31) confirmed cases have been reported from IP Dakar from: **Anambra-3** [Ekwoisigo (1), Idemili North (1), Onitsha North (1)], **Benue-3** [Gwer West (2), Ushongo (1)], **Delta-4** [Aniocha South (1), Ika South (2), Patani (1)], **Enugu-13** [Nkanu East (11), Nkanu West (1), Udenu (1)], **Imo-1** [Ideato North (1)], **Niger -1**[Munya (1)], **Oyo-4** [Ido (2), Ona ara (1), Oyo East (1)] and **Ondo -1**(Ondo West (1), **Osun-1**[Irewole (1)]
- Thirteen (42%) of the confirmed cases were from Enugu State
- Three deaths were recorded from Anambra (1), Imo (1) and Osun (1) among suspected cases
- Two deaths among confirmed cases from Anambra (1) and Osun (1); **CFR (6.5%)**
- Male to female ratio was 1.2:1 with males 720 (55.0%) and females 592 (45.0%)



9
STATES
WITH
CONFIRME

Table 1: Summary of yellow fever cases in Nigeria as at Epi week 34 (August 31st), 2021.

State	# Suspected Cases	# LGAs with suspected cases	# LGAs with confirmed cases	Laboratory Results					Deaths	
				Samples positive (IgM) & Inconclusive in NG)	LGAs with positive (IgM) & Inconclusive in NG)	Confirmed Cases (PCR NG)	Confirmed Cases (IP Dakar)	Total Confirmed Cases	# Deaths among Confirmed Cases [CFR] (%)	# Deaths among All Cases [CFR](%)
Abia	35	10	-	-	-	-	-	-	-	-
Adamawa	32	14	-	-	-	-	-	-	-	-
Akwa Ibom	3	3	-	-	-	-	-	-	-	-
Anambra	110	20	3	11	9	-	2	3	1	1
Bauchi	63	11	-	2	2	-	-	-	-	-
Bayelsa	20	6	-	-	-	-	-	-	-	-
Benue	29	9	2	6	3	-	-	3	-	-
Borno	148	16	-	6	4	-	-	-	-	-
Cross River	13	10	-	-	-	-	-	-	-	-
Delta	27	10	3	5	3	-	4	4	-	-
Ebonyi	26	11	-	1	1	-	-	-	-	-
Edo	36	10	-	1	1	-	-	-	-	-
Ekiti	7	5	-	-	-	-	-	-	-	-
Enugu	88	15	3	16	5	-	13	13	-	-
FCT Abuja	10	4	-	-	-	-	-	-	-	-
Gombe	1	1	-	-	-	-	-	-	-	-
Imo	52	19	1	2	2	-	1	1	-	1
Jigawa	30	12	-	-	-	-	-	-	-	-
Kaduna	2	2	-	-	-	-	-	-	-	-
Kano	20	11	-	1	1	-	-	-	-	-
Katsina	150	30	-	3	2	-	-	-	-	-
Kebbi	32	14	-	1	1	-	-	-	-	-
Kogi	15	11	-	1	1	-	-	-	-	-
Kwara	25	12	-	1	1	-	-	-	-	-
Lagos	5	3	-	-	-	-	-	-	-	-
Nasarawa	29	9	-	1	1	-	-	-	-	-
Niger	41	18	1	1	1	-	1	1	-	-
Ogun	24	9	-	-	-	-	-	-	-	-
Ondo	39	13	1	3	2	-	1	1	-	-
Osun	15	9	1	1	1	-	1	1	1	1
Oyo	46	20	3	5	4	-	4	4	-	-
Plateau	25	10	-	-	-	-	-	-	-	-
Rivers	10	8	-	-	-	-	-	-	-	-
Sokoto	7	4	-	-	-	-	-	-	-	-
Taraba	17	5	-	-	-	-	-	-	-	-
Yobe	67	12	-	1	1	-	-	-	-	-
Zamfara	13	9	-	1	1	-	-	-	-	-
TOTAL	1,312	395(51%)	18 (2.0%)	70(5%)	47 (6%)	0	31(2%)	31 (3%)	2 (6%)	3 (0.2%)

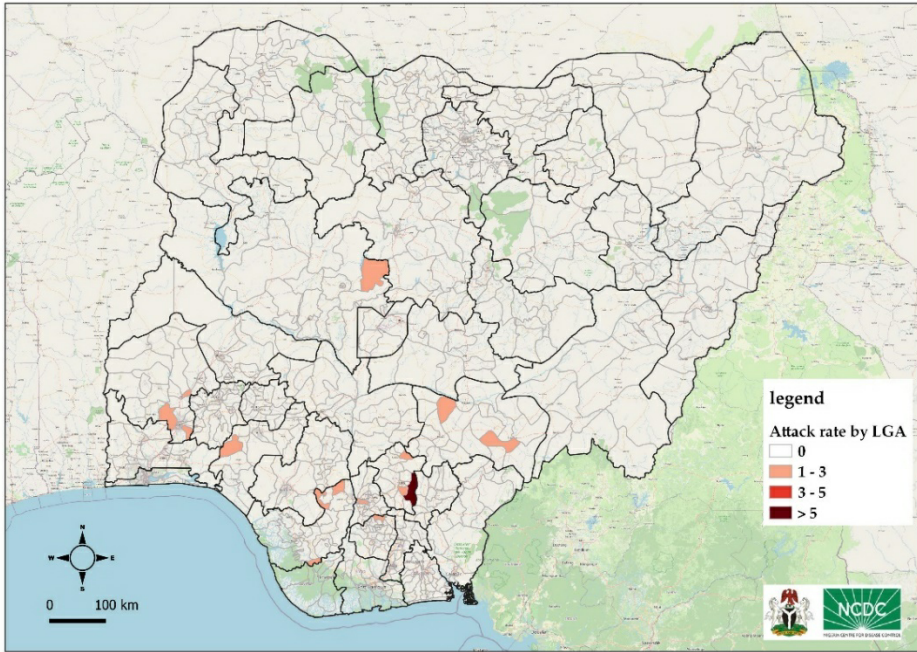


Figure 1: Map of Nigeria showing yellow fever outbreak attack rates in affected LGAs, Epi week 1 - 34, August 2021

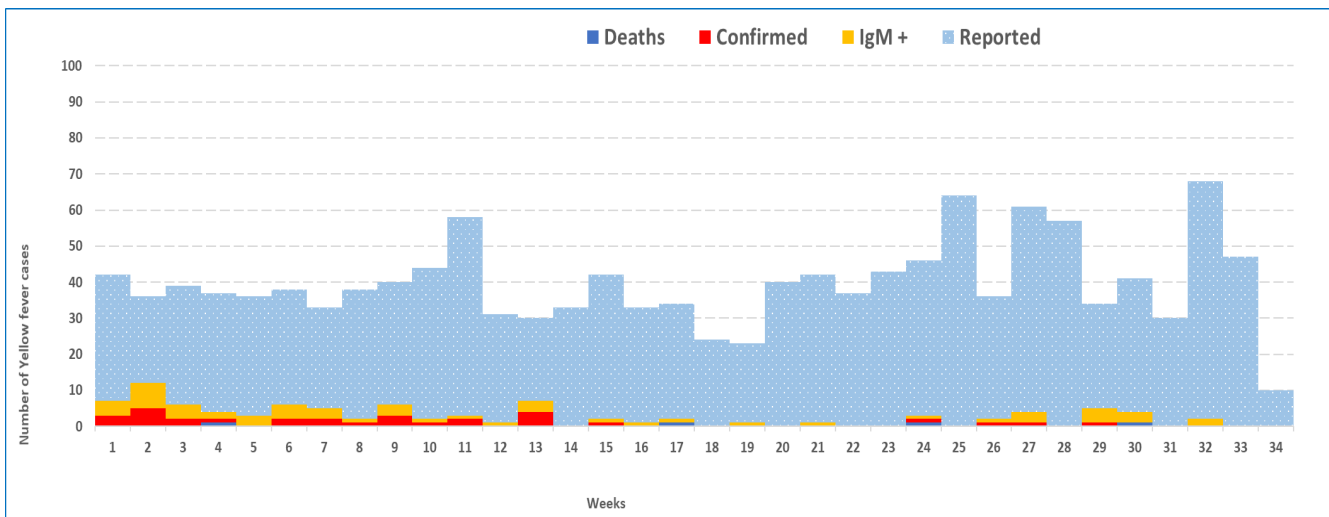


Figure 2: Epicurve of yellow fever cases in Nigeria as at Epi week 34, August 2021

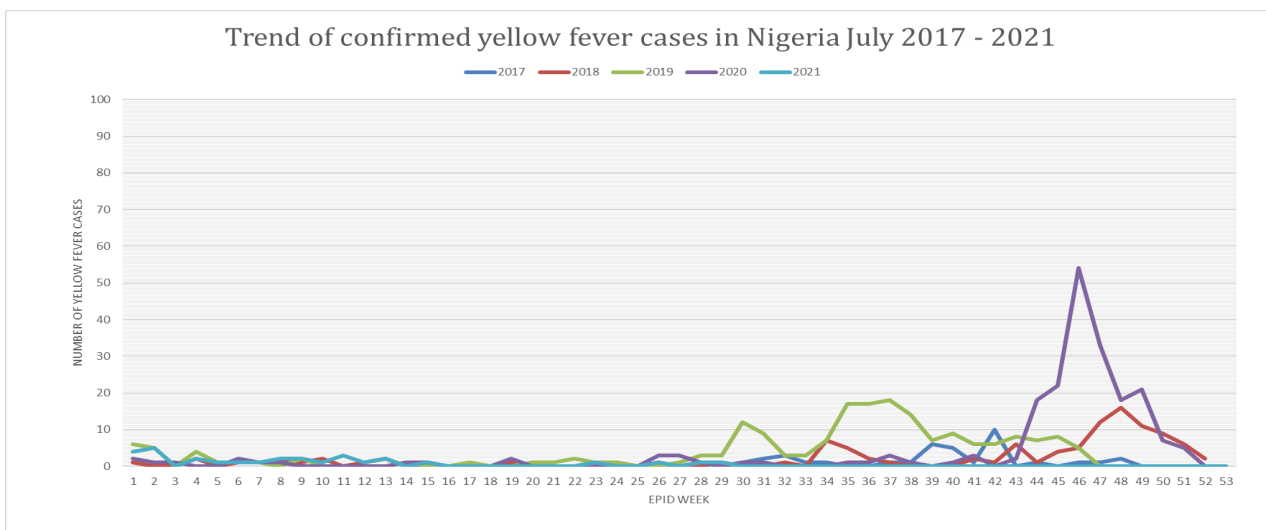


Figure 3: Trend of confirmed yellow fever cases in Nigeria 2017 – 2021

Enugu State

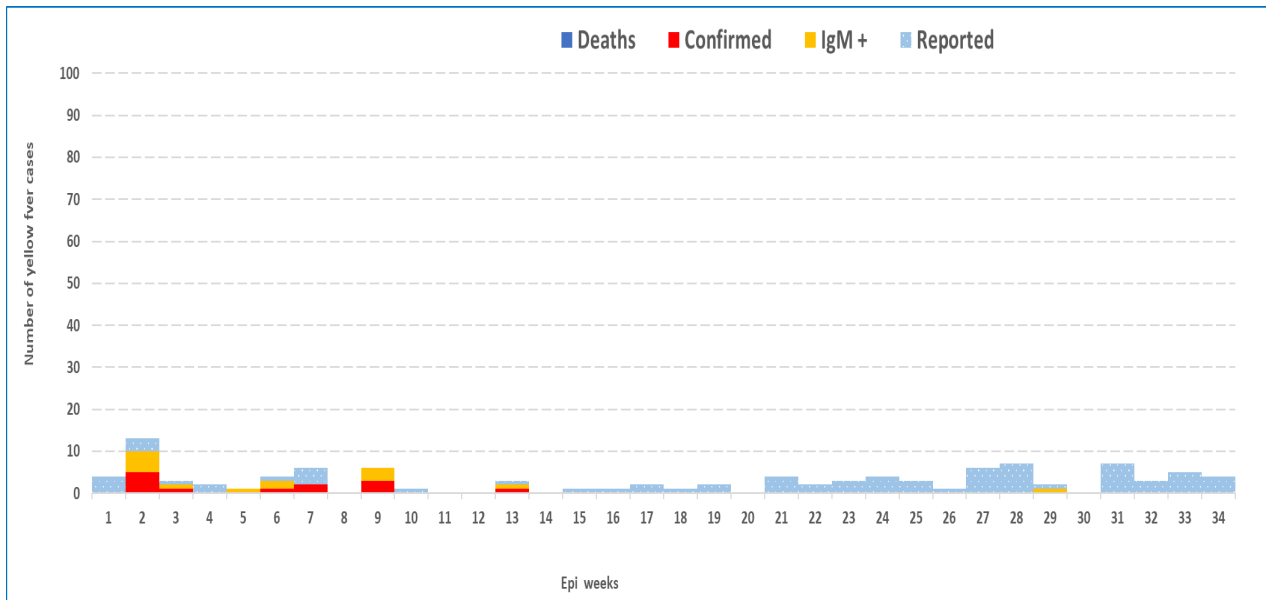


Figure 4a: Epicurve of yellow fever cases in Enugu State as at Epi week 34, August, 2021

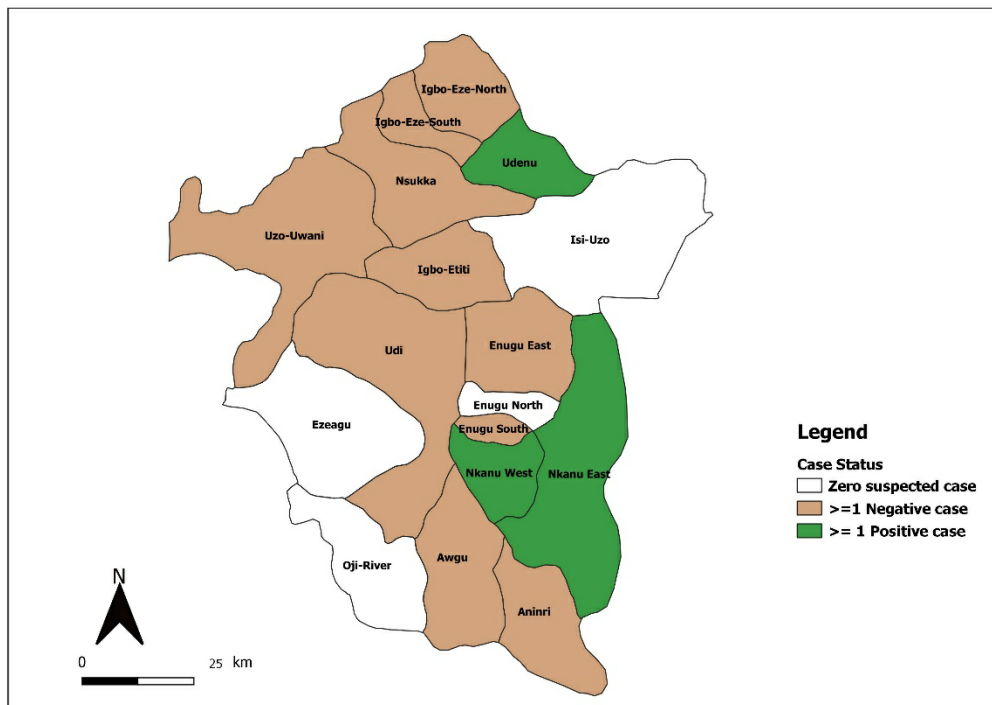


Figure 4b: Map of yellow fever cases in Enugu State as at Epi week 34 August, 2021

Partners

