

COVID-19 SITUATION REPORT

SITUATION REPORT 118

Thursday, 25th June 2020



DATA AS REPORTED AND ACCURATE BY NCDC AS AT MIDNIGHT 25th JUNE 2020

HIGHLIGHTS

- Five hundred and ninety-four (**594**) confirmed cases were reported in the last 24 hours from **22** states – Lagos (159), Delta (106), Ondo (44), Edo (34), FCT (34), Kaduna (33), Oyo (33), Enugu (28), Katsina (25), Imo (22), Adamawa (15), Ogun (12), Osun (11), Abia (8), Rivers (6), Bauchi (5), Nasarawa (5), Niger (5), Kebbi (4), Ekiti (3), Plateau (1) and Taraba (1).
- No new state recorded a confirmed COVID-19 case in the last 24 hours. The total number of states including FCT that have reported at least one confirmed case in Nigeria is still **36** (35 states + FCT).
- Two hundred and nine (**209**) cases were discharged in the last 24 hours in **16** states – Oyo (45), Katsina (28), Kano (19), Rivers (19), FCT (17), Lagos (17), Gombe (15), Borno (11), Bauchi (10), Plateau (8), Enugu (6), Edo (4), Kaduna (4), Imo (2), Kebbi (2) and Ogun (2).
- Seven deaths were recorded in the last 24 hours in **5** states – FCT (2), Ondo (2), Adamawa (1), Borno (1) and Rivers (1).

SITUATION UPDATES

Total (New in the last 24 hours)

SAMPLES TESTED

125,090 (2,935)

CONFIRMED CASES

22,614 (594)

AFFECTED STATES INCLUDING FCT

36 (0)

DISCHARGED CASES

7,822 (209)

CONFIRMED FATALITIES

549 (7) – 2.4% CFR

DEMOGRAPHICS

MALE – 15,034 (**66%**)

FEMALE – 7,580 (**34%**)

MOST AFFECTED AGE GROUP

31 - 40 (**24%**)

PERSONS OF INTEREST

10,498 (Total)

10375 (98.8% - Exceeded Follow Up)

PROVENANCE

TRAVEL HISTORY – **407 (2%)**

CONTACTS – **5,491 (24%)**

UNKNOWN EXPOSURE – **16,716 (74%)**

GLOBAL UPDATES

TOTAL NUMBER OF CASES

9,296,202 (479,133 deaths)

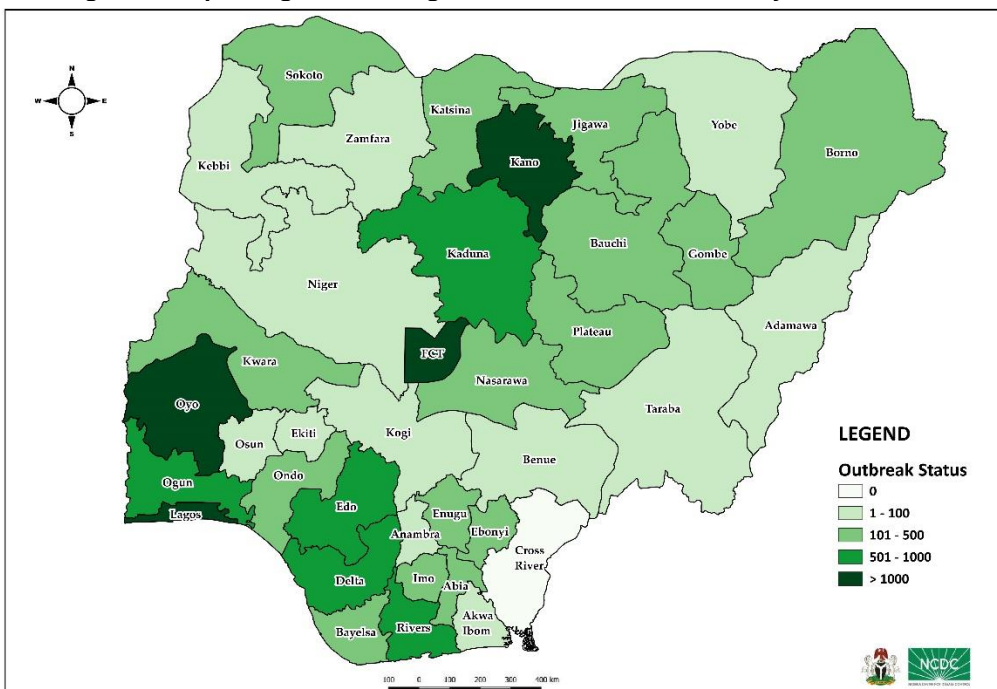
COUNTRIES & TERRITORIES AFFECTED*

213

*Excluding the 2 International Conveyances

STATE OF THE NATION

Figure 1: Map of Nigeria showing 35 states and FCT affected by COVID-19



GENERAL FACT SHEET – DATA AS AT 25th JUNE 2020

Table 1: States with reported laboratory-confirmed COVID-19 cases, recoveries, deaths and days since last reported case

STATES	CONFIRMED CASES		DISCHARGED CASES		DEATHS		TOTAL ACTIVE CASES	DAYS SINCE LAST REPORTED CASE
	CUMULATIVE	NEW	CUMULATIVE	NEW	CUMULATIVE	NEW		
Lagos	9,482	159	1,475	17	126	0	7,881	0
FCT	1,656	34	514	17	32	2	1,110	0
Kano	1,191	0	793	19	51	0	347	1
Oyo	1,188	33	337	45	9	0	842	0
Rivers	936	6	473	19	36	1	427	0
Edo	851	34	257	4	32	0	562	0
Ogun	733	12	453	2	17	0	263	0
Delta	715	106	159	0	22	0	534	0
Kaduna	668	33	312	4	10	0	346	0
Bauchi	493	5	378	10	12	0	103	0
Gombe	482	0	317	15	16	0	149	1
Borno	477	0	387	11	32	1	58	2
Katsina	459	25	267	28	22	0	170	0
Jigawa	317	0	191	0	6	0	120	12
Plateau	294	1	156	8	8	0	130	0
Abia	288	8	173	0	3	0	112	0
Imo	269	22	23	2	3	0	243	0
Ebonyi	264	0	222	0	1	0	41	3
Kwara	217	0	128	0	6	0	83	1
Ondo	206	44	67	0	19	2	120	0
Enugu	202	28	37	6	5	0	160	0
Nasarawa	198	5	112	0	8	0	78	0
Bayelsa	184	0	41	0	12	0	131	1
Sokoto	140	0	118	0	14	0	8	1
Niger	84	5	37	0	3	0	44	0
Osun	84	11	47	0	5	0	32	0
Akwa Ibom	83	0	43	0	2	0	38	1
Zamfara	76	0	71	0	5	0	0	38
Adamawa	73	15	37	0	6	1	30	0
Kebbi	71	4	42	2	6	0	23	0
Anambra	70	0	57	0	9	0	4	1
Yobe	56	0	45	0	8	0	3	7
Benue	47	0	15	0	1	0	31	2
Ekiti	38	3	28	0	2	0	8	0
Taraba	19	1	10	0	0	0	9	0
Kogi	3	0	0	0	0	0	3	22
TOTAL	22,614	594	7,822	209	549	7	14,243	

States including FCT are arranged in descending order by number of total confirmed cases

SELECTED CHARTS

Figure 2: Daily Epidemic Curve of Confirmed Cases (WK9 – WK26)

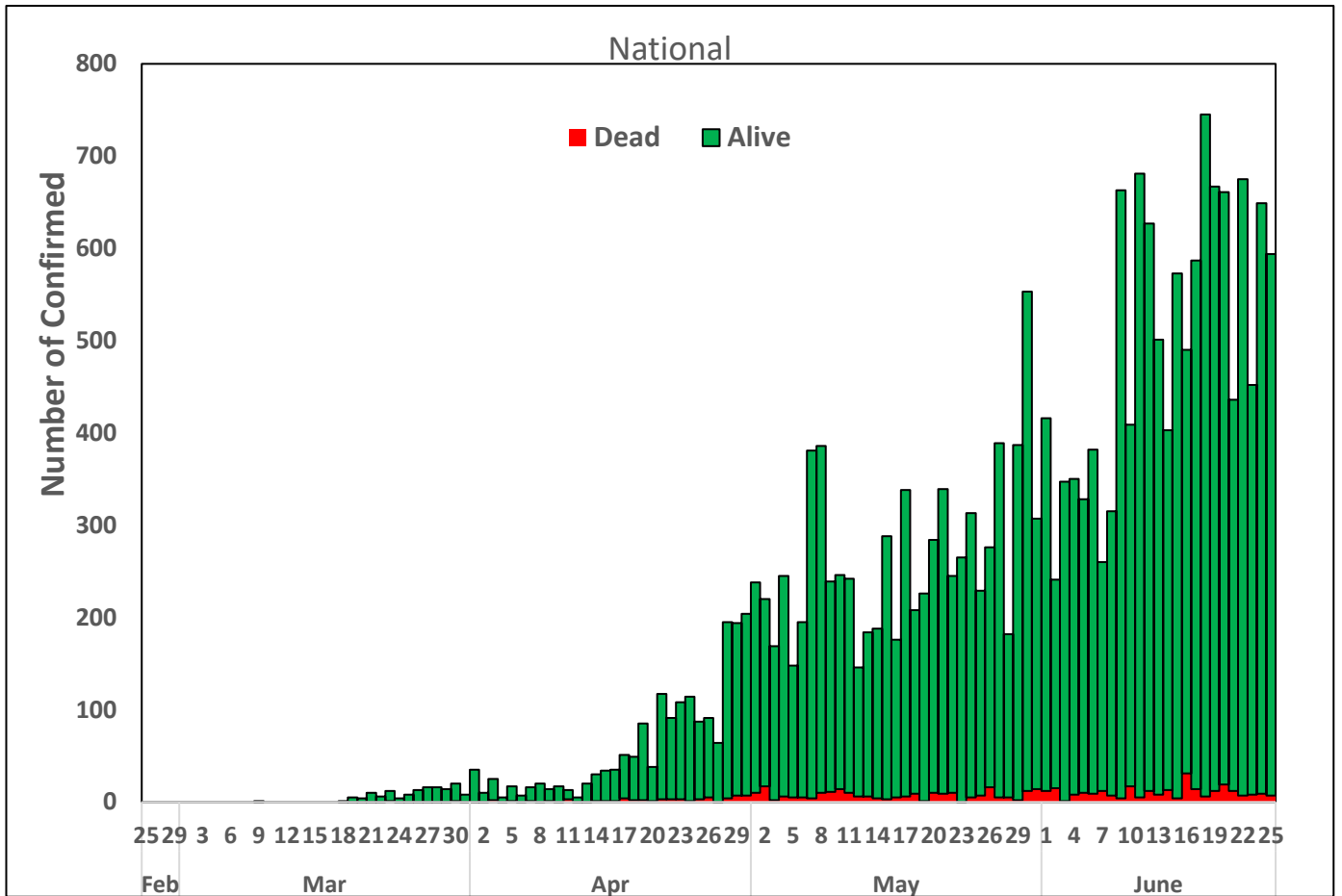
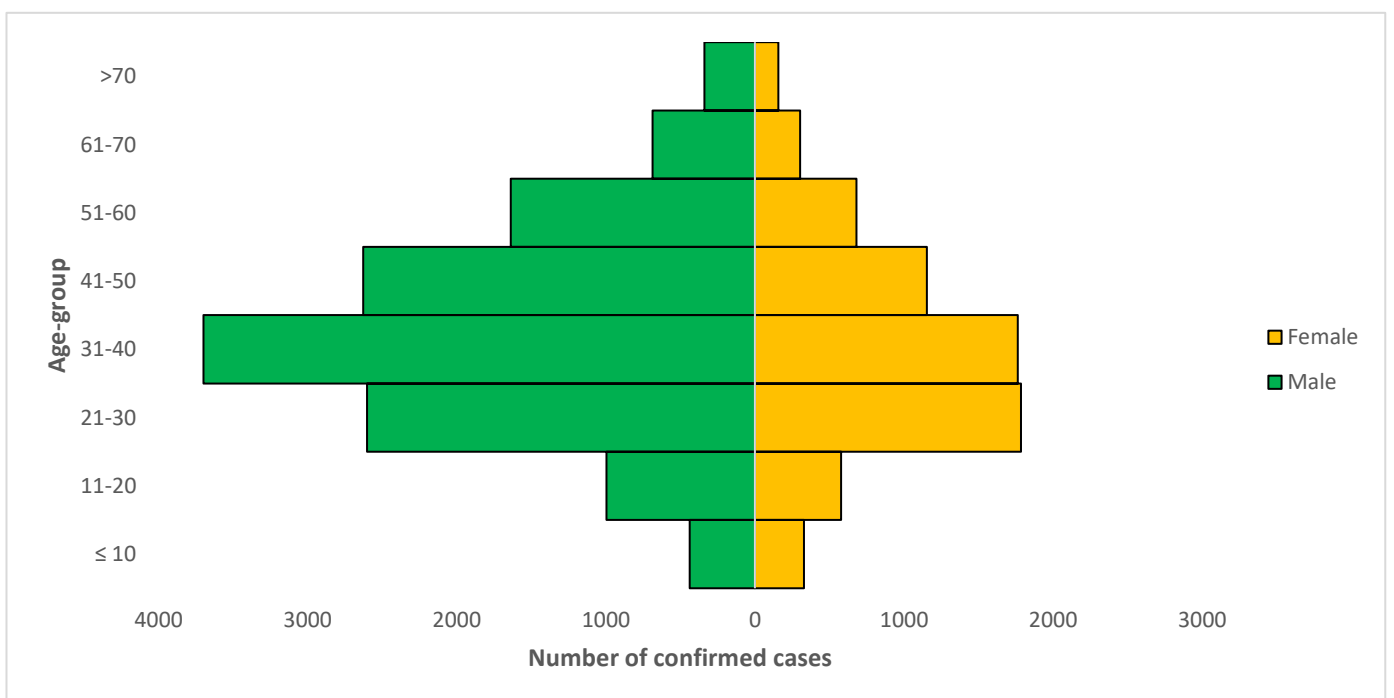


Figure 3: Age-Sex Distribution of Confirmed Cases (WK9 – WK26)



PREPAREDNESS

Since the confirmation of the first case on 27th February 2020, the NCDC has released advisories and statements to help Nigerians and affected groups in particular to respond to the pandemic

- NCDC has released [guidelines on the re-opening of places for worship](#).
- The Nigeria Police Force has released COVID-19 operational guidelines for the [Police and other Law Enforcement Agencies](#) in Nigeria
- NCDC and the Department of Hospital Services (Federal Ministry of Health) have updated the [case management guidelines](#) (version 3) with reviewed changes such as the discharge criteria and medication being used for the treatment of cases
- Guidelines have been issued for the [safe transportation of remains of persons suspected or confirmed to have died of COVID-19](#)
- Information on diagnostics of the COVID-19 virus can be found in our [detailed FAQ document](#).
- To increase our testing capacity, NCDC has issued guidelines for the [integration of private labs](#).
- Guidelines for [businesses and employers](#) have been updated.
- NCDC has updated its [case definition](#) , [community case definition](#) and [case management guide](#).
- NCDC releases periodic [public health advisories](#) to Nigerians on the COVID-19 disease.
- To adhere to post-lockdown measures, NCDC has released an [advisory on the use of face masks](#), as well as information on the [Use of Cloth face masks](#) and [how to make your cloth face masks](#).
- NCDC has released guidelines for the [management of pregnant women and nursing mothers](#) during the pandemic.
- To address burials of loved ones who die from COVID-19, guidelines have been issued to advise on the [management of dead bodies](#).
- For health centres managing cases, the following documents have been released- a guideline for the [Rational Use of Personal Protective Equipment in the care of COVID-19 cases](#).
- As part of plans to increase the testing capacity of the country, the NCDC published a [National Strategy to Scale Up Access to Coronavirus Disease Testing in Nigeria](#) document.
- The Presidential Task Force has published policies and announcements on COVID-19 [available on the website of the Presidency](#) – including presidential addresses, task force updates and information on livelihood and economic support.

RESPONSE

On 28th February 2020, a multi-sectoral Emergency Operations Centre (EOC) was activated at Level 3 – the highest emergency level in Nigeria –led by NCDC in close coordination with the State Public Health EOCs (PHEOC).

- **NCDC Director General met with the leadership of the Nigeria Governors’ Forum to discuss the NCDC/World Bank REDISSE project funding support, and modalities for states to access funding for Nigeria**
- **Ongoing review and finalisation of contact tracing guidelines**
- **Ongoing development of 23 critical indicators for data quality performance monitoring**
- **Ongoing comprehensive training of 40 Healthcare Workers (HCWs) from public and private sector for two weeks in Kwara State**
- **Deployment of reagents and other consumables for activating COBAS system throughput testing at the Central Public Health Laboratory (CPHL)**
- **Participated in a resource mobilisation meeting with development partners**
- Ongoing engagement with Presidential Task Force (PTF) to finalise framework for Non Pharmaceutical Interventions (NPIs) using risk categorisation of geographical areas
- Finalised plans on implementation of state training of trainers (TOT)
- Engagement with State Surveillance Officers (SSOs) on data quality improvement
- Ongoing engagement with Delta State to finalise plans on implementing a nine day training for healthcare workers
- Currently collaborating with partners at the grass root on engagement with vulnerable groups on COVID-19 prevention and control measures in all states
- All education materials can be found via www.covid19.ncdc.gov.ng