



CHOLERA SITUATION REPORT

WEEKLY EPIDEMIOLOGICAL REPORT 04

Epi Week 27: 5th July – 11th July 2021

DATA AS REPORTED AND ACCURATE BY NCDC AS AT MIDNIGHT 11TH JULY 2021

HIGHLIGHTS

- Eighteen states and FCT have reported suspected cholera cases in 2021. These are Benue, Delta, Zamfara, Gombe, Bayelsa, Kogi, Sokoto, Bauchi, Kano, Kaduna, Plateau, Kebbi, Cross River, Nasarawa, Niger, Jigawa, Yobe, Kwara and FCT
- In the reporting week, eight states and FCT reported **1,885** suspected cases - **Bauchi (1,364), Kano, (231), Jigawa (99), Niger (70), Plateau (42), Zamfara (35), Kaduna (17), Kwara (14) and FCT (13)**. Of this, there were seventeen RDT confirmed cases from Kwara (12), Plateau (3) and Kaduna (2) States
- There were **31 deaths** from four states with CFR 1.6%
- One new state – Kwara - reported cases in epi week 27
- A total of 1,885 suspected cases were reported this week representing a 1.1% increase compared to the number of suspected cases recorded in week 26
- A total of 31 deaths were recorded in the last one week, with no increase compared to the previous week
- The national multi-sectoral EOC activated at level 02 continues to coordinate the national response

Epi-Summary

- As at July 11, 2021, a total of **19,305 suspected cases including 479 deaths (CFR 2.5%)** have been reported from 18 states and FCT (Benue, Delta, Zamfara, Gombe, Bayelsa, Kogi, Sokoto, Bauchi, Kano, Kaduna, Plateau, Kebbi, Cross River, Niger, Nasarawa, Jigawa, Yobe, Kwara and FCT) since the beginning of 2021
- Of the reported cases since the beginning of the year, **11.0% are aged 5 - 14 years**
- Of all suspected cases, **52% are males and 48% are females**
- There has been an increase in the number of new cases in the last two weeks. **Bauchi (2660), Kano (441), Jigawa (321) and Kwara (143) account for 92% of 3,878 cases reported** in the last two weeks (26 and 27)
- Since the beginning of the year, a total of 515 samples have been collected with positive cases as follows - 182 RDT positive only; 55 culture positive; 237 RDT and culture positive. The test positivity rate (TPR) for laboratory confirmation by culture is 32.2%

GENERAL FACT SHEET – DATA AS AT 11TH JULY 2021

Table 1: Reported suspected cholera cases by state Week 01 – 27, 2021

	State	Reporting week 27					Cumulative			Confirmation			
		Suspected cases	Deaths	CFR (%)	RDT	Culture	Suspected cases	Deaths	CFR (%)	RDT		Culture	
										Tested	Positive	Tested	Positive
1	Bayelsa	0	0	0	0	0	258	15	5.8	8	3	0	0
2	Benue	0	0	0	0	0	602	12	2.0	23	19	4	4
3	Kogi	0	0	0	0	0	12	4	33.3	0	0	0	0
4	Sokoto	0	0	0	0	0	2,178	86	4.0	5	0	5	4
5	Gombe	0	0	0	0	0	190	1	0.5	8	5	0	0
6	Delta	0	0	0	0	0	583	32	5.5	0	0	7	2
7	Cross River	0	0	0	0	0	31	0	0.0	0	0	2	2
8	Kebbi	0	0	0	0	0	35	1	2.9	0	0	0	0
9	Nasarawa	0	0	0	0	0	411	17	4.1	0	0	4	4
10	Plateau	42	0	0	3	0	942	11	1.2	44	35	0	0
11	Bauchi	1,364	13	1.0	0	0	6271	66	1.1	10	7	0	0
12	Kaduna	17	0	0	2	0	543	50	9.2	39	17	1	1
13	Zamfara	35	0	0	0	0	2,209	11	0.5	60	32	7	7
14	Kano	231	12	5.2	0	0	3,953	119	3.0	55	40	35	31
15	Niger	70	2	2.8	0	0	213	13	6.1	12	3	0	0
16	FCT	13	0	0	0	0	225	12	5.3	16	5	0	0
17	Jigawa	99	4	4.0	0	0	482	10	2.1	3	3	0	0
18	Yobe	0	0	0	0	0	24	3	12.5	1	1	0	0
19	Kwara	14	0	0	0	0	143	16	11.2	112	12	0	0
	Total	1,885	31	1.6	5	0	19,305	479	2.5	396	182	65	55

Figure 1: Map of Nigeria showing states with reported cholera cases, Week 01 – 27, 2021

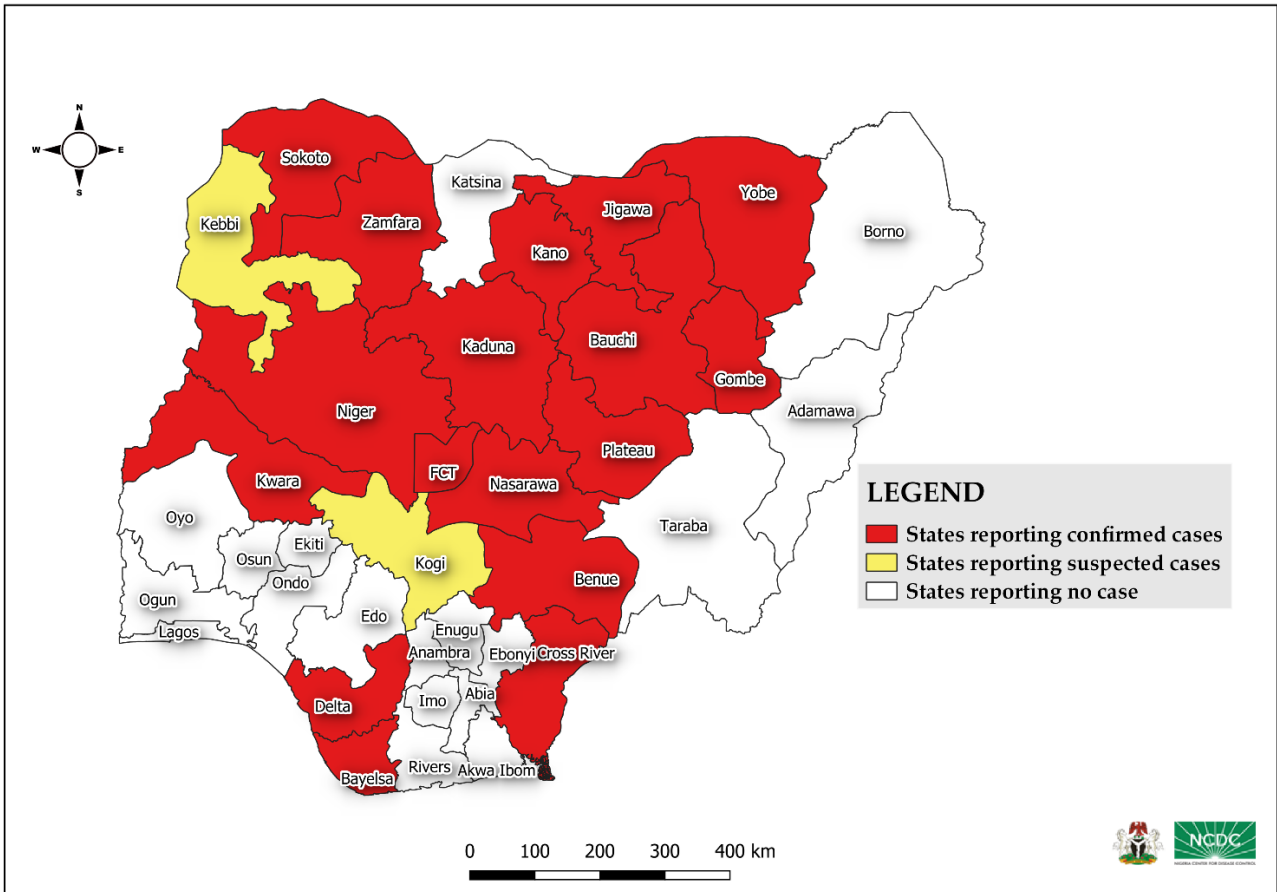


Figure 2: National Epi-Curve

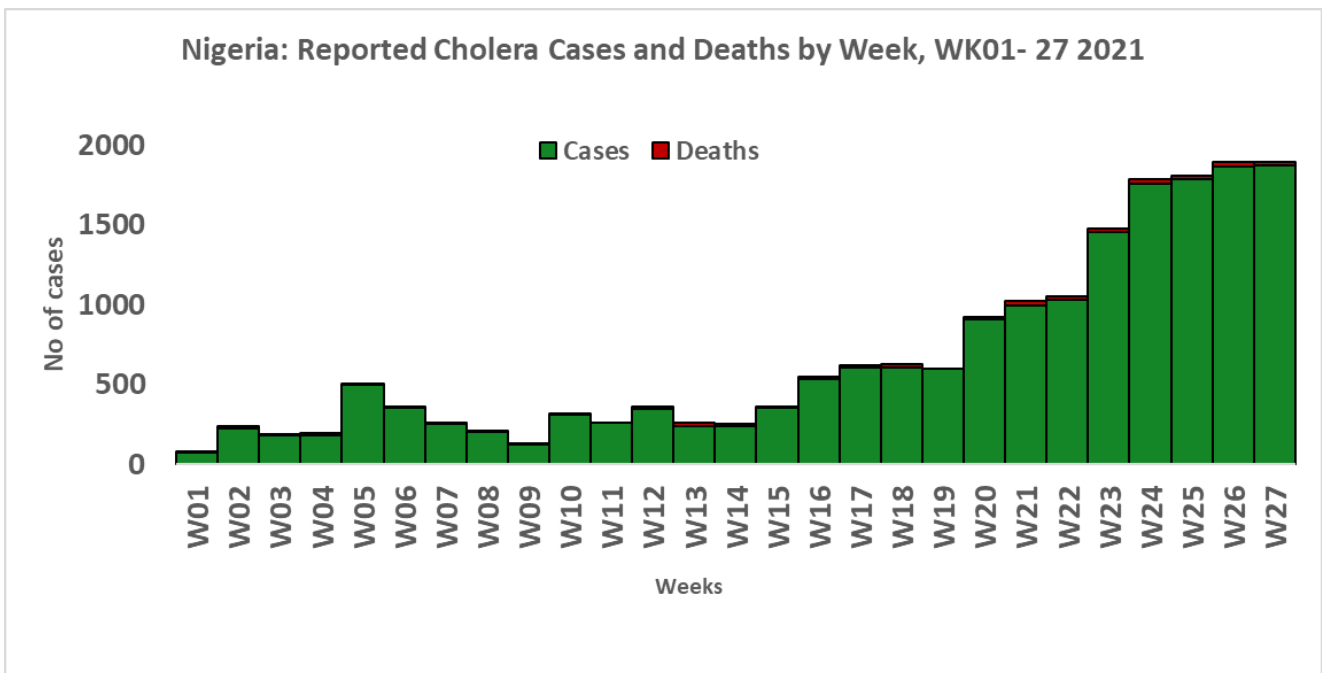


Figure 3: States Epi-Curve

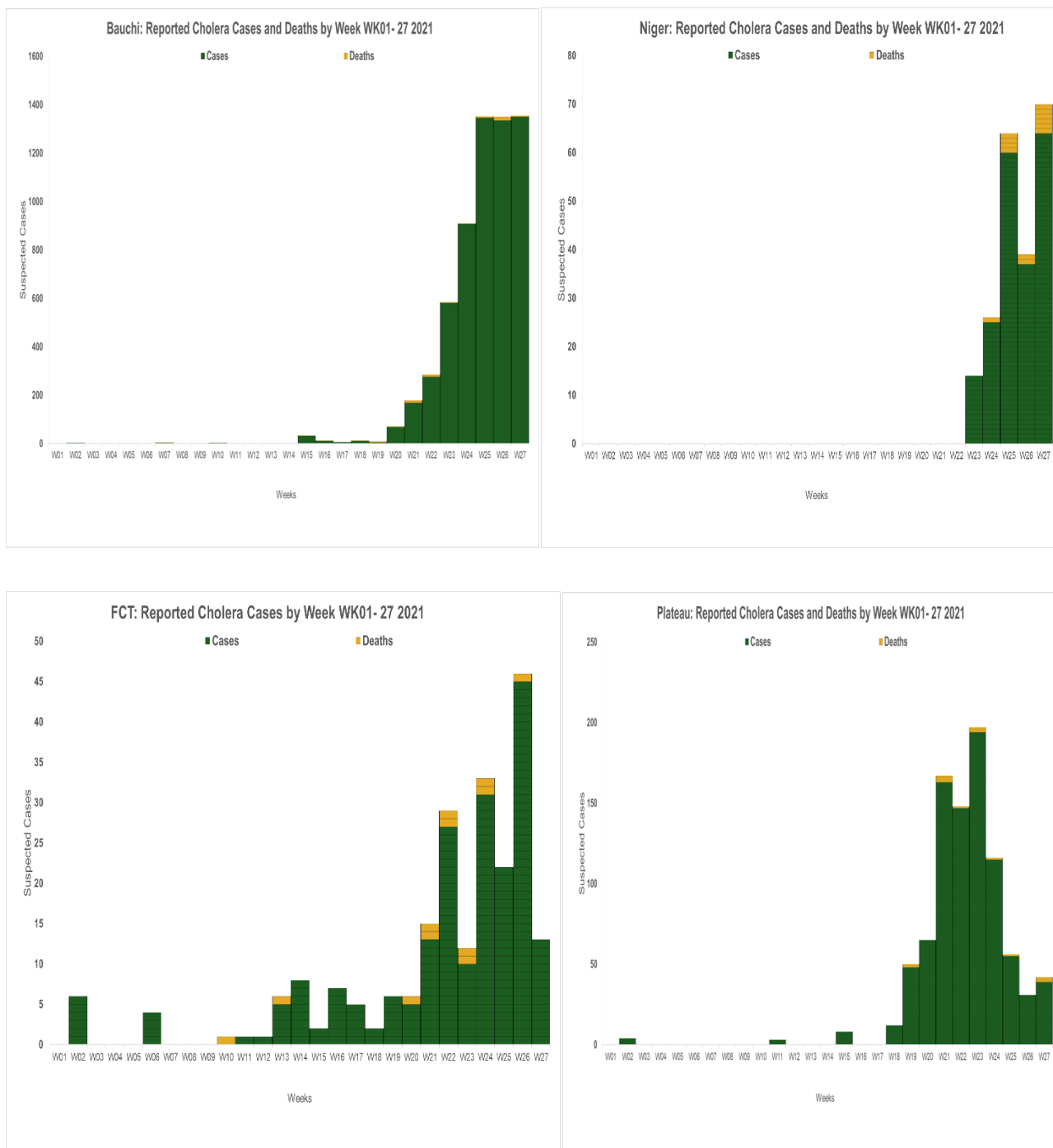
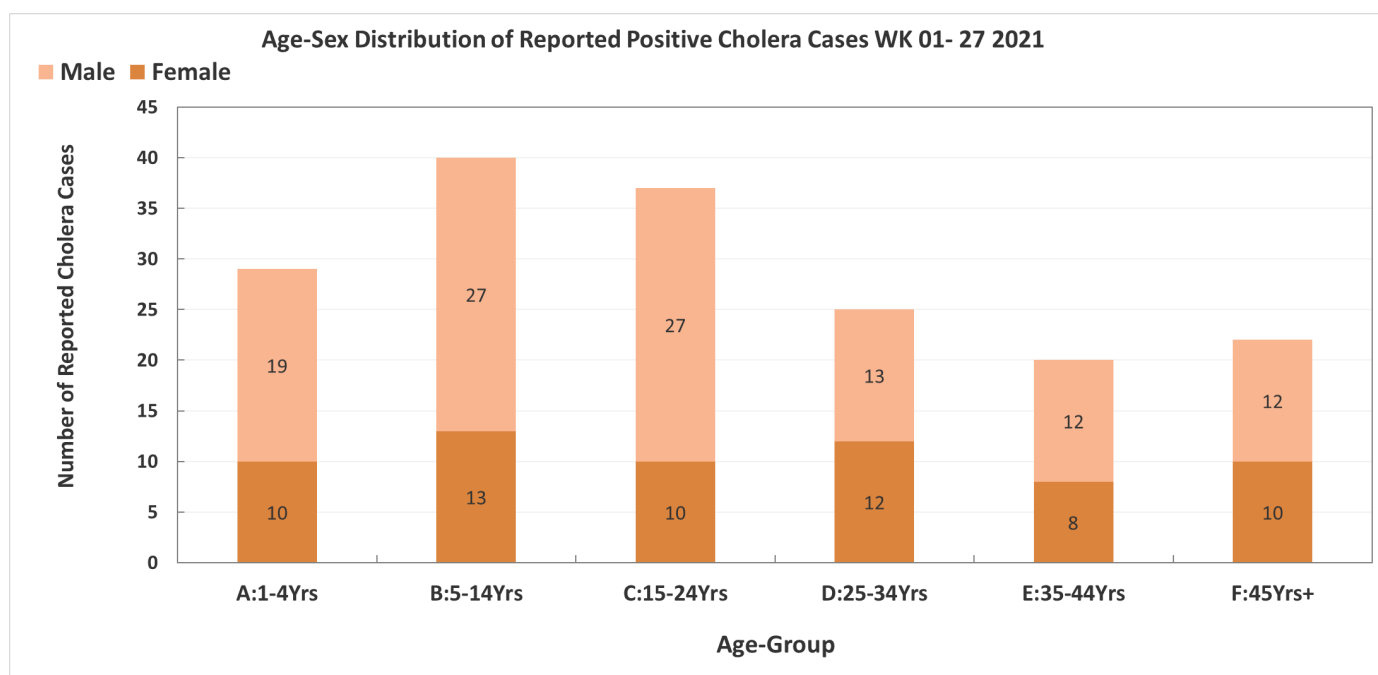
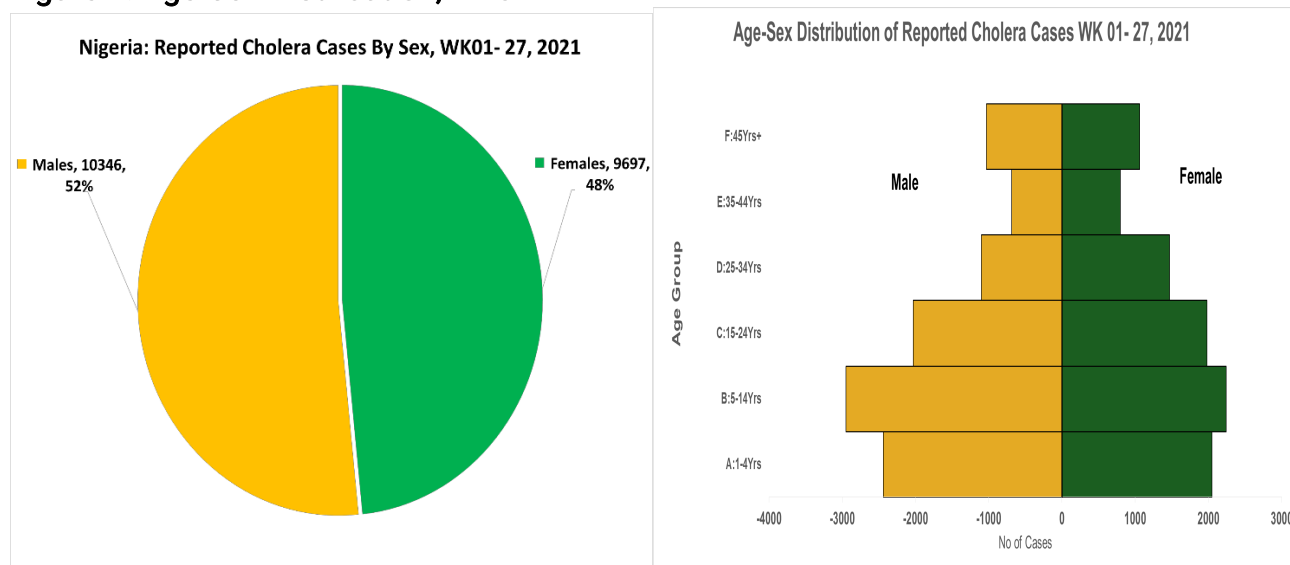


Figure 4: Age-Sex Distribution, Wk01 – Wk27



RESPONSE ACTIVITIES

Coordination

- Response is being coordinated by the national multi-sectoral EOC hosted at NCDC, in collaboration with Federal Ministry of Water Resources (FMWR), National Primary Healthcare Development Agency (NPHCDA) and partners
- Currently, Zamfara, Kaduna, Bauchi, Plateau, FCT and Kano State-level EOCs are in response mode
- National Rapid Response Teams (RRTs) with response commodities were deployed by NCDC to support the response in six states - Benue, Kano, Kaduna, Zamfara, Bauchi and Plateau States

- Reactive OCV campaign in Bauchi LGA, Bauchi State planned for 26th to 29th July, 2021

Surveillance

- Ongoing surveillance in all states through the routine Integrated Disease Surveillance and Response (IDSR) and Event Based Surveillance (EBS)

WASH

- Hygiene promotion, provision of safe water and sensitisation on dangers of open defecation ongoing in high-risk communities by WASH sector partners and Community Health Volunteers in the affected states
- Three (3) LGAs attained Open Defecation Free (ODF) status: Ganjuwa LGA, Bauchi State; Giwa and Kaura LGAs in Kaduna State

Laboratory surveillance

- Supported testing of samples received from Benue, Niger, Plateau, Bauchi, Jigawa, Kaduna, Kano, Kwara and FCT at NCDC National Reference Laboratory (NRL), Abuja
- Planned training of State Laboratory Scientists on sample collection and analysis

Risk communications

- Cholera jingles are being aired in English and local languages
- Community social mobilisation, distribution of Information, Education and Communication (IEC) materials and awareness campaigns ongoing in affected communities
- Continued follow-up with states for update on risk communication

Logistics and vaccination

- Essential response commodities are being procured for pre-positioning in cholera hotspots
- Epidemiological trend is being monitored to guide ICG request for planned vaccination campaigns

Challenges

- Difficulty in accessing some communities due to security concerns
- Open defecation in affected communities
- Lack of potable drinking water in some rural areas and urban slums
- Inadequate vaccines to cover all LGAs, wards and settlements with cholera outbreaks
- Inadequate health facility infrastructure and cholera commodities for management of patients

NEXT STEPS

- Conduct training on cholera surveillance, hotspots mapping and developed state level preparedness and response plans

- Maintain communication with states for data reporting and response support
- Develop and submit cholera vaccination request to International Coordinating Group (ICG) for reactive and preventive cholera campaign
- Continue advocacy to State Governments to increase funding in WASH infrastructures
- Procure and pre-position response commodities
- Build capacity for sample collection, transportation and laboratory diagnosis
- Planned deployment of RRTs to more affected states
- Scale up risk communications