

# COVID-19 SITUATION REPORT

## SITUATION REPORT 167

Thursday, 13<sup>th</sup> August 2020



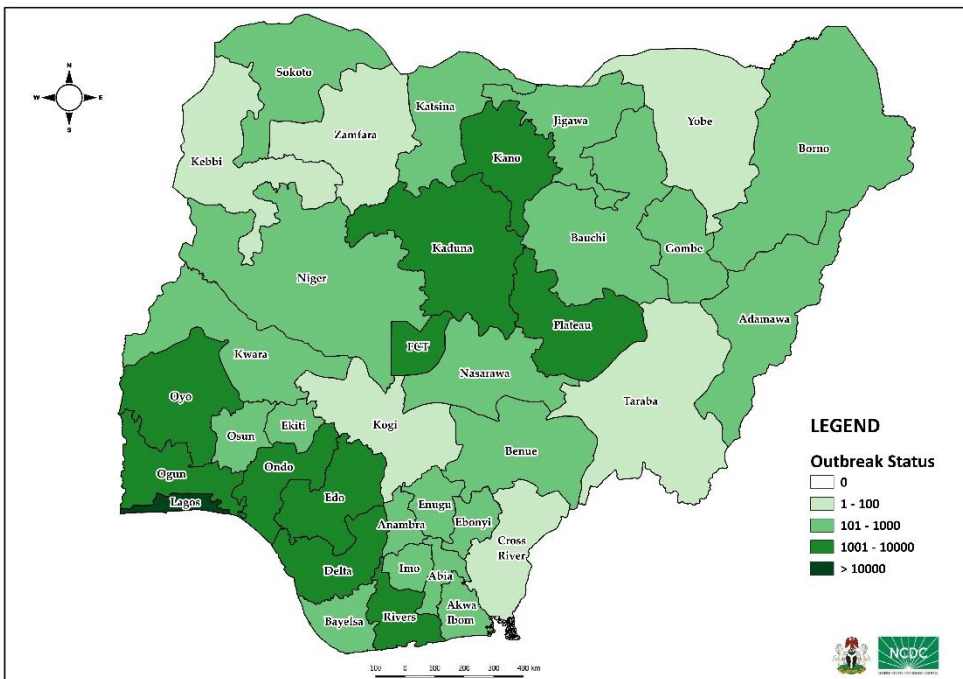
DATA AS REPORTED AND ACCURATE BY NCDC AS AT MIDNIGHT 13<sup>TH</sup> AUGUST 2020

### HIGHLIGHTS

- Three hundred and seventy-three (**373**) confirmed cases were reported in the last 24 hours from **20** states – Lagos (69), Osun (41), Kaduna (40), Oyo (40), FCT (35), Plateau (22), Rivers (19), Kano (17), Ondo (17), Ogun (15), Abia (14), Gombe (12), Imo (9), Enugu (7), Kwara (6), Delta (5), Niger (2), Bauchi (1), Borno (1) and Nasarawa (1).
- Three hundred and sixty-six (**366**) cases were discharged in the last 24 hours in **15** states – Oyo (76), Enugu (50), Plateau (50), Kwara (42), Abia (29), Rivers (28), Ogun (22), Kaduna (21), Gombe (14), FCT (12), Kano (7), Imo (6), Bauchi (3), Niger (3) and Lagos (3).
- Ten (**10**) deaths were reported in the last 24 hours in **five** states – Lagos (6), Ekiti (1), Kwara (1), Plateau (1) and Rivers (1).
- All **36** states in Nigeria, and the FCT, have reported a confirmed case.

### STATE OF THE NATION

Figure 1: Map of Nigeria showing 36 states and FCT affected by COVID-19



### SITUATION UPDATES

Total (New in the last 24 hours)

SAMPLES TESTED

**344,397 (2,976)**

CONFIRMED CASES

**48,116 (373)**

AFFECTED STATES INCLUDING FCT

**37**

DISCHARGED CASES

**34,309 (366)**

CONFIRMED FATALITIES

**966 (10) – 2.0% CFR**

DEMOGRAPHICS

MALE – 30,863 (64%)

FEMALE – 17,253 (36%)

MOST AFFECTED AGE GROUP

31 - 40 (25%)

PERSONS OF INTEREST

**11,328 (Total)**

**11,187 (98.8% - Exceeded Follow Up)**

PROVENANCE

TRAVEL HISTORY – 847 (2%)

CONTACTS – 11,727 (24%)

UNKNOWN EXPOSURE – 35,542 (74%)

GLOBAL UPDATES

TOTAL NUMBER OF CASES

**20,439,814 (744,385 deaths)**

COUNTRIES & TERRITORIES AFFECTED\*

**216**

\*Excluding the 2 International Conveyance

## GENERAL FACT SHEET – DATA AS AT 13<sup>th</sup> AUGUST 2020

Table 1: States with reported laboratory-confirmed COVID-19 cases, recoveries, deaths and days since last reported case

STATES	CONFIRMED CASES		DISCHARGED CASES		DEATHS		TOTAL ACTIVE CASES	DAYS SINCE LAST REPORTED CASE
	TOTAL	NEW	TOTAL	NEW	TOTAL	NEW		
Lagos	16,256	69	13,132	3	201	6	2,923	0
FCT	4,632	35	1,325	12	46	0	3,261	0
Oyo	2,935	40	1,504	76	31	0	1,400	0
Edo	2,399	0	2,121	0	100	0	178	2
Rivers	1,991	19	1,775	28	56	1	160	0
Kaduna	1,706	40	1,493	21	12	0	201	0
Plateau	1,665	22	736	50	24	1	905	0
Kano	1,661	17	1,320	7	54	0	287	0
Delta	1,626	5	1,430	0	44	0	152	0
Ogun	1,521	15	1,288	22	24	0	209	0
Ondo	1,373	17	770	0	28	0	575	0
Enugu	976	7	650	50	19	0	307	0
Ebonyi	908	0	852	0	26	0	30	1
Kwara	888	6	591	42	23	1	274	0
Katsina	746	0	457	0	24	0	265	10
Osun	719	41	341	0	13	0	365	0
Borno	698	1	576	0	36	0	86	0
Abia	677	14	546	29	5	0	126	0
Gombe	647	12	576	14	23	0	48	0
Bauchi	580	1	533	3	14	0	33	0
Imo	494	9	168	6	10	0	316	0
Benue	430	0	139	0	9	0	282	2
Nasarawa	372	1	223	0	8	0	141	0
Bayelsa	346	0	316	0	21	0	9	6
Jigawa	322	0	308	0	11	0	3	28
Akwa Ibom	241	0	207	0	8	0	26	1
Niger	228	2	168	3	12	0	48	0
Ekiti	194	0	81	0	3	1	110	1
Adamawa	185	0	104	0	12	0	69	6
Anambra	156	0	131	0	18	0	7	2
Sokoto	154	0	138	0	16	0	0	19
Kebbi	90	0	82	0	8	0	0	23
Taraba	78	0	55	0	4	0	19	2
Zamfara	77	0	71	0	5	0	1	26
Cross River	73	0	42	0	8	0	23	3
Yobe	67	0	57	0	8	0	2	14
Kogi	5	0	3	0	2	0	0	41
<b>Total</b>	<b>48,116</b>	<b>373</b>	<b>34,309</b>	<b>366</b>	<b>966</b>	<b>10</b>	<b>12,841</b>	

States, including FCT, are arranged in descending order by number of total confirmed cases and then alphabetical order

## SELECTED CHARTS

Figure 2: Daily Epidemic Curve of Confirmed Cases (WK9 – WK33)

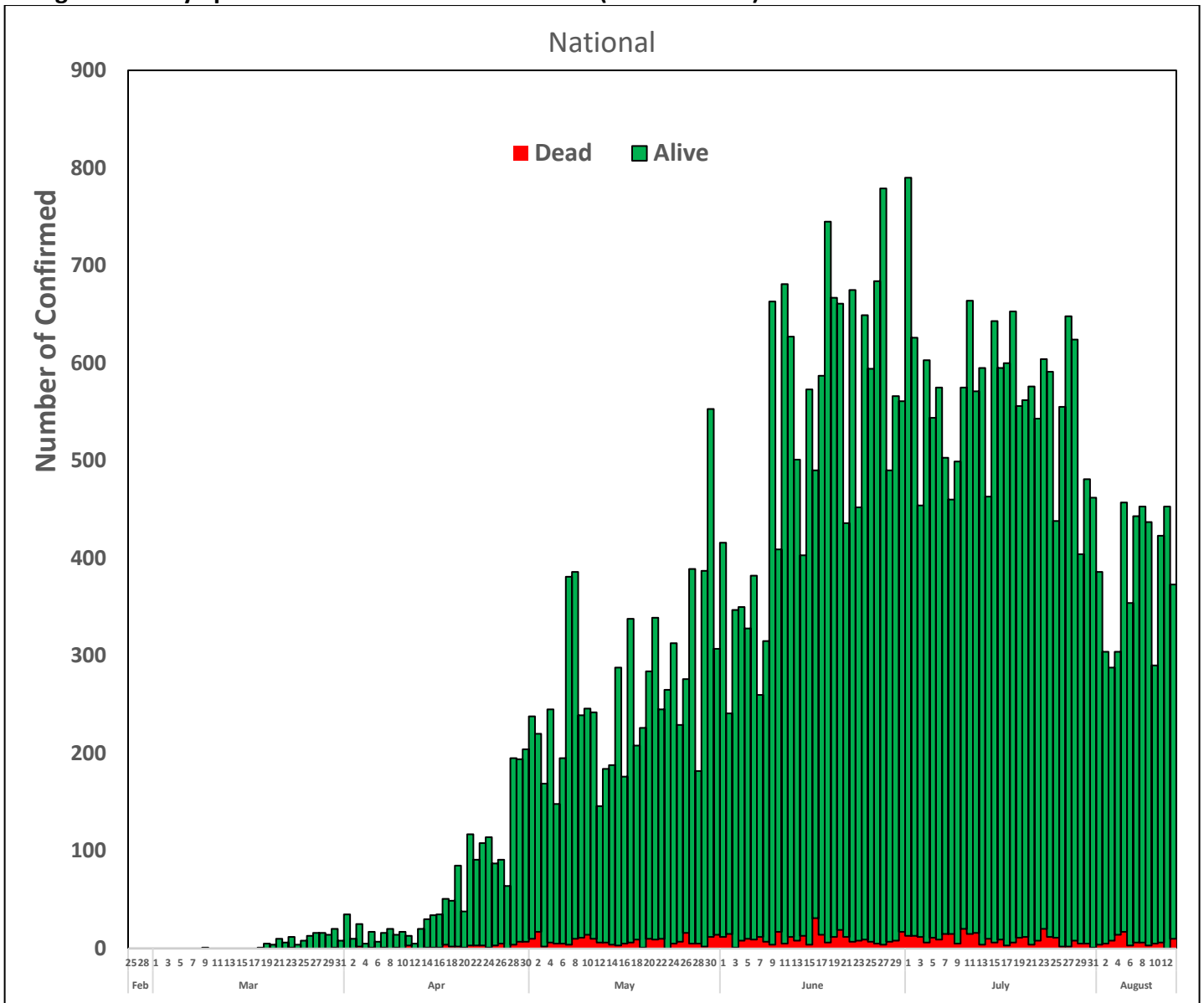
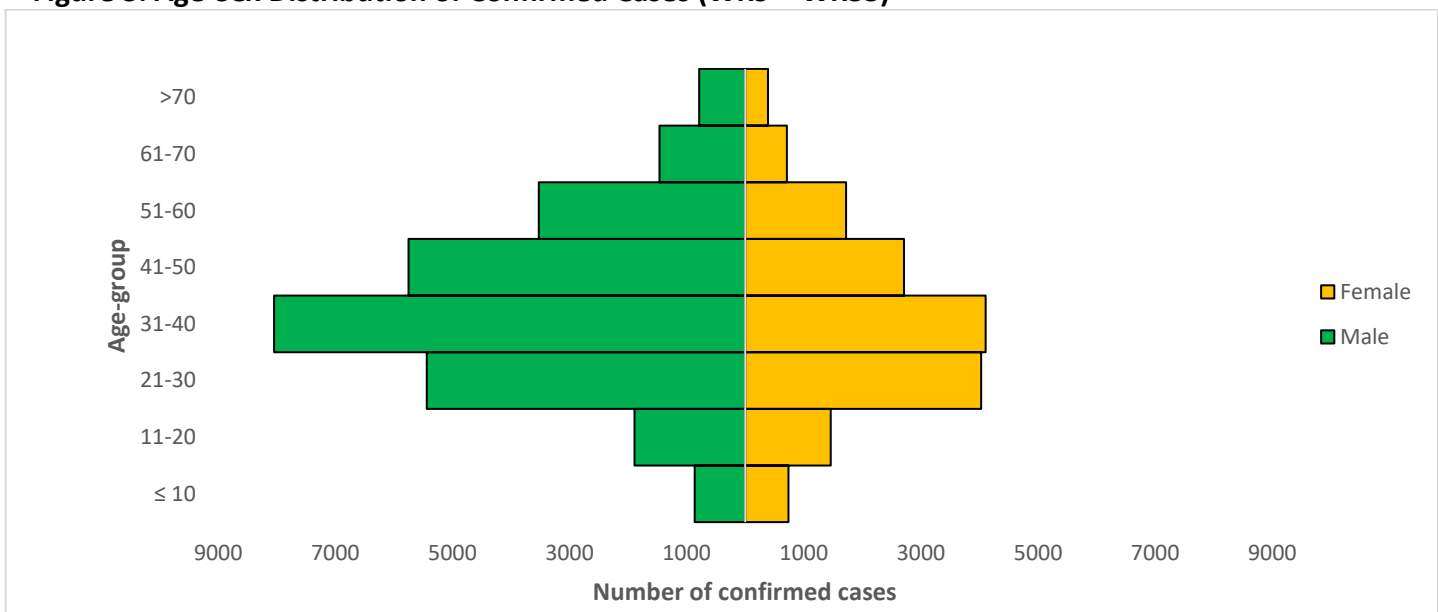


Figure 3: Age-Sex Distribution of Confirmed Cases (WK9 – WK33)



## PREPAREDNESS

Since the confirmation of the first case on 27<sup>th</sup> February 2020, the NCDC has released advisories and statements to help Nigerians and affected groups in particular to respond to the pandemic

- NCDC has launched an online course on [Infection, Prevention and Control \(IPC\) for COVID-19](#) NCDC eLearning platform
- Ahead of forthcoming elections in the country, NCDC has issued [Guidelines for Conducting Elections During the COVID-19 Outbreak in Nigeria](#).
- To protect our elders, and those with pre-existing medical conditions, NCDC has issued an [Advisory for Vulnerable Groups](#).
- NCDC has released [guidelines on the re-opening of places for worship](#).
- NCDC has released [Strategies to Improve Surveillance for COVID-19 Guidance for States](#)
- The Nigeria Police Force has released COVID-19 operational guidelines for the [Police and other Law Enforcement Agencies in Nigeria](#)
- Guidelines have been issued for the [safe transportation of remains of persons suspected or confirmed to have died of COVID-19](#)
- Information on diagnostics of the COVID-19 virus can be found in our [detailed FAQ document](#).
- To increase our testing capacity, NCDC has issued guidelines for the [integration of private labs](#).
- Guidelines for [businesses and employers](#) have been updated.
- NCDC has updated its [case definition](#) , [community case definition](#) and [case management guide](#).
- NCDC releases periodic [public health advisories](#) to Nigerians on the COVID-19 disease.
- To adhere to post-lockdown measures, NCDC has released an [advisory on the use of face masks](#), as well as information on the [Use of Cloth face masks](#) and [how to make your cloth face masks](#).
- NCDC has released guidelines for the [management of pregnant women and nursing mothers](#) during the pandemic.
- To address burials of loved ones who die from COVID-19, guidelines have been issued to advise on the [management of dead bodies](#).
- For health centres managing cases, the following documents have been released- a guideline for the [Rational Use of Personal Protective Equipment in the care of COVID-19 cases](#).
- As part of plans to increase the testing capacity of the country, the NCDC published a [National Strategy to Scale Up Access to Coronavirus Disease Testing in Nigeria](#) document.
- The Presidential Task Force has published policies and announcements on COVID-19 [available on the website of the Presidency](#) – including presidential addresses, task force updates and information on livelihood and economic support.

## RESPONSE

On 28<sup>th</sup> February 2020, a multi-sectoral Emergency Operations Centre (EOC) was activated at Level 3 – the highest emergency level in Nigeria –led by NCDC in close coordination with the State Public Health EOCs (PHEOC).

- **Developed a concise advisory for case finding and sample collection for State Epidemiologists**
- **Activated a new GeneXpert laboratory in Onitsha, Anambra State**
- **Conducted Infection Prevention and Control (IPC) training for teachers across the three senatorial zones in preparation for school reopening in Abia State**
- **Engaged with Adamawa, Edo and Jigawa States on improving compliance to preventive measures and resolving community resistance through risk communication**
- Ongoing training of surveillance officers to commence the deployment of Surveillance and Outbreak Response Management and Analysis System tool (SORMAS) in Gombe State
- Developed and shared list of essential laboratory commodities and supplies for COVID-19 to states
- Trained 594 Healthcare Workers on Infection Prevention and Control (IPC) from private and public health facilities in Abia State
- Shared a press release and conducted radio interviews on World Mask Week

- Developed 91 jingles in different languages and shared with states and stakeholders
- All education materials can be found via [www.covid19.ncdc.gov.ng](http://www.covid19.ncdc.gov.ng)