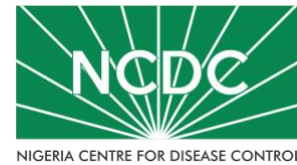


COVID-19 SITUATION REPORT

SITUATION REPORT 143

Monday, 20th July 2020



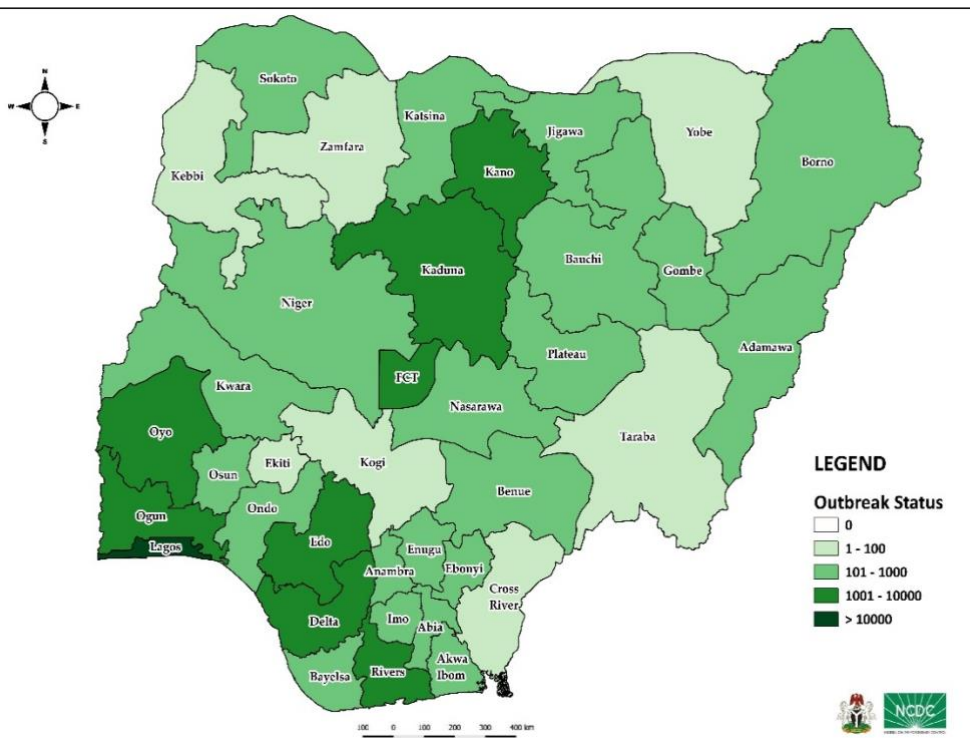
DATA AS REPORTED AND ACCURATE BY NCDC AS AT MIDNIGHT 20th JULY 2020

HIGHLIGHTS

- Five hundred and sixty-two (**562**) confirmed cases were reported in the last 24 hours from **21** states – FCT (102), Lagos (100), Plateau (52), Kwara (50), Abia (47), Kaduna (35), Benue (34), Oyo (26), Ebonyi (24), Kano (16), Niger (15), Anambra (14), Gombe (12), Edo (11), Rivers (6), Delta (5), Nasarawa (5), Borno (3), Bauchi (2), Enugu (2) and Kebbi (1).
- Two hundred and twenty-eight (**228**) cases were discharged in the last 24 hours in **12** states – Edo (60), Ogun (36), Plateau (31), Abia (26), FCT (19), Ebonyi (15), Kaduna (15), Benue (9), Rivers (7), Gombe (5), Borno (3) and Bayelsa (2).
- Twelve (**12**) deaths were recorded in the last 24 hours in **eight** states – Anambra (2), Delta (2), Ebonyi (2), Niger (2), Bayelsa (1), Gombe (1), Ondo (1) and Rivers (1).
- All **36** states in Nigeria, and the FCT, have reported a confirmed case.

STATE OF THE NATION

Figure 1: Map of Nigeria showing 36 states and FCT affected by COVID-19



SITUATION UPDATES

Total (New in the last 24 hours)

SAMPLES TESTED

218,223 (3995)

CONFIRMED CASES

37,225 (562)

AFFECTED STATES INCLUDING FCT

37

DISCHARGED CASES

15,333 (228)

CONFIRMED FATALITIES

801 (12) – 2.2% CFR

DEMOGRAPHICS

MALE – 24,047(65%)

FEMALE – 13,178 (35%)

MOST AFFECTED AGE GROUP

31 - 40 (25%)

PERSONS OF INTEREST

10,987 (Total)

10,902 (99.2% - Exceeded Follow Up)

PROVENANCE

TRAVEL HISTORY – 719 (2%)

CONTACTS – 9,296 (25%)

UNKNOWN EXPOSURE – 27,210 (73%)

GLOBAL UPDATES

TOTAL NUMBER OF CASES

14, 348, 858 (603,691 deaths)

COUNTRIES & TERRITORIES AFFECTED*

213

*Excluding the 2 International Conveyances

GENERAL FACT SHEET – DATA AS AT 20TH JULY 2020

Table 1: States with reported laboratory-confirmed COVID-19 cases, recoveries, deaths and days since last reported case

STATES	CONFIRMED CASES		DISCHARGED CASES		DEATHS		TOTAL ACTIVE CASES	DAYS SINCE LAST REPORTED CASE
	CUMULATIVE	NEW	CUMULATIVE	NEW	CUMULATIVE	NEW		
Lagos	13,538	100	1,964	0	176	0	11,398	0
FCT	3,129	102	902	19	39	0	2,188	0
Oyo	2,193	26	1,116	0	20	0	1,057	0
Edo	2,000	11	1,280	60	68	0	652	0
Rivers	1,535	6	1,003	7	49	1	483	0
Delta	1,428	5	630	0	39	2	759	0
Kano	1,416	16	1,125	0	53	0	238	0
Kaduna	1,191	35	872	15	12	0	307	0
Ogun	1,174	0	886	36	22	0	266	1
Ondo	925	0	143	0	22	1	760	1
Katsina	710	0	441	0	23	0	246	1
Plateau	700	52	312	31	18	0	370	0
Ebonyi	679	24	572	15	16	2	91	0
Enugu	677	2	360	0	17	0	300	0
Borno	602	3	513	3	35	0	54	0
Kwara	585	50	188	0	14	0	383	0
Gombe	558	12	510	5	23	1	25	0
Bauchi	531	2	506	0	13	0	12	0
Abia	526	47	391	26	3	0	132	0
Imo	452	0	83	0	9	0	360	2
Osun	351	0	99	0	10	0	242	1
Bayelsa	322	0	179	2	21	1	122	2
Jigawa	322	0	308	0	11	0	3	4
Benue	294	34	53	9	6	0	235	0
Nasarawa	281	5	113	0	8	0	160	0
Akwa Ibom	176	0	121	0	3	0	52	1
Niger	166	15	112	0	9	2	45	0
Sokoto	153	0	137	0	16	0	0	16
Anambra	132	14	67	0	12	2	53	0
Adamawa	115	0	85	0	9	0	21	2
Kebbi	89	1	74	0	7	0	8	0
Ekiti	86	0	47	0	2	0	37	1
Zamfara	77	0	71	0	5	0	1	2
Yobe	64	0	53	0	8	0	3	2
Taraba	30	0	11	0	0	0	19	7
Cross River	13	0	3	0	1	0	9	2
Kogi	5	0	3	0	2	0	0	17
Total	37,225	562	15,333	228	801	12	21,091	

States, including FCT, are arranged in descending order by number of total confirmed cases and then alphabetical order

SELECTED CHARTS

Figure 2: Daily Epidemic Curve of Confirmed Cases (WK9 – WK30)

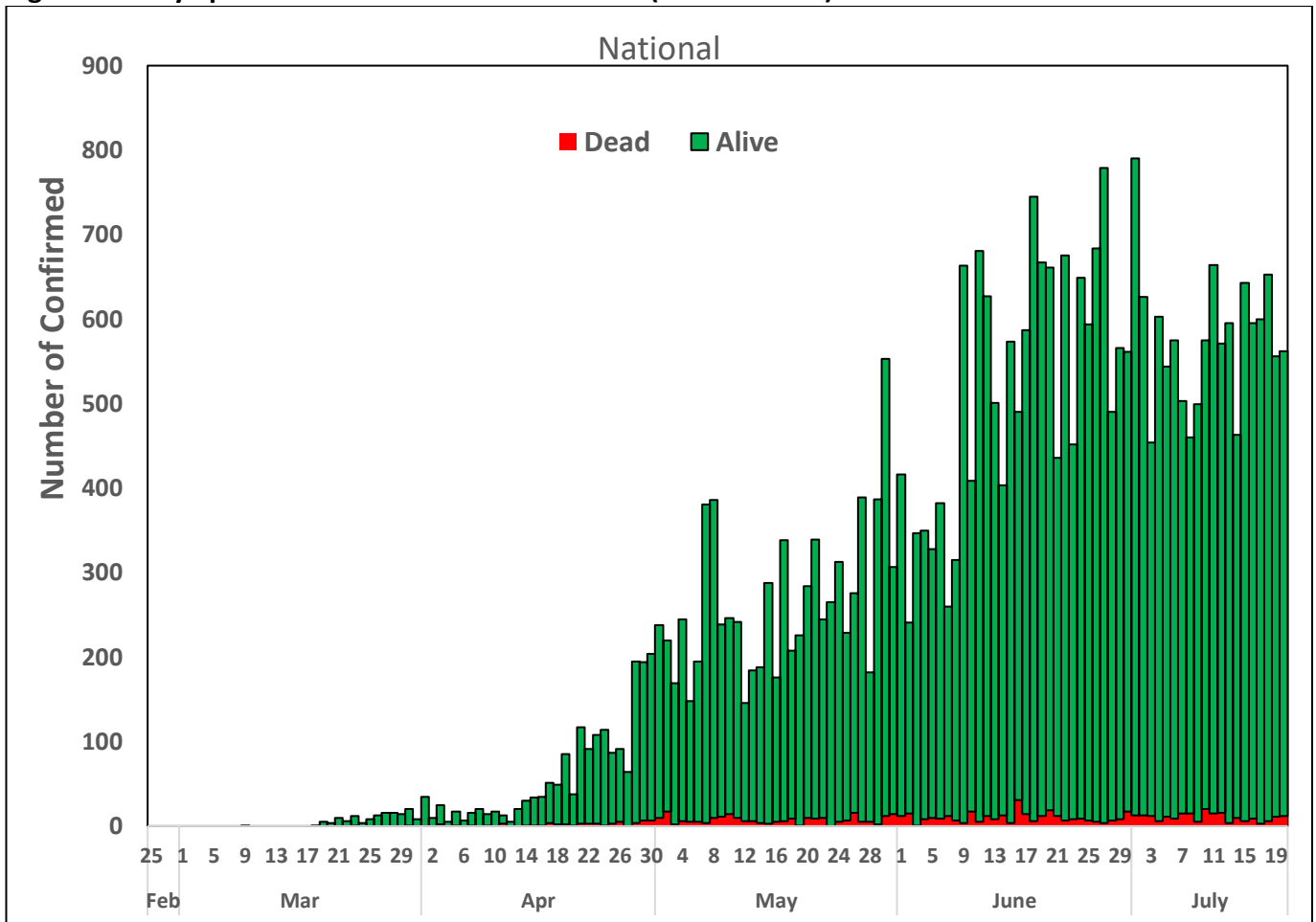
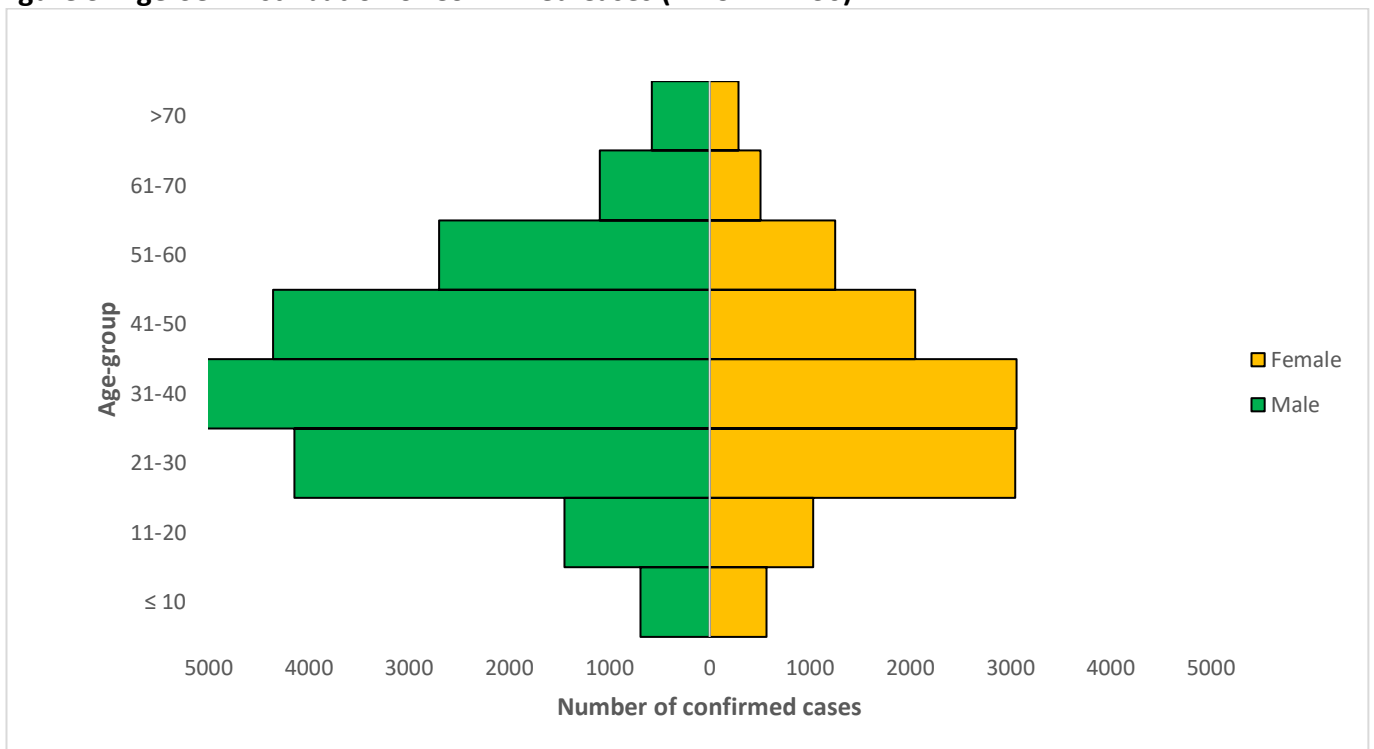


Figure 3: Age-Sex Distribution of Confirmed Cases (WK9 – WK30)



PREPAREDNESS

Since the confirmation of the first case on 27th February 2020, the NCDC has released advisories and statements to help Nigerians and affected groups in particular to respond to the pandemic

- NCDC has launched an online course on [Infection, Prevention and Control \(IPC\) for COVID-19](#) NCDC eLearning platform
- Ahead of forthcoming elections in the country, NCDC has issued [Guidelines for Conducting Elections During the COVID-19 Outbreak in Nigeria](#).
- To protect our elders, and those with pre-existing medical conditions, NCDC has issued an [Advisory for Vulnerable Groups](#).
- NCDC has released [guidelines on the re-opening of places for worship](#).
- The Nigeria Police Force has released COVID-19 operational guidelines for the [Police and other Law Enforcement Agencies in Nigeria](#)
- NCDC and the Department of Hospital Services (Federal Ministry of Health) have updated the [case management guidelines](#) (version 3) with reviewed changes such as the discharge criteria and medication being used for the treatment of cases
- Guidelines have been issued for the [safe transportation of remains of persons suspected or confirmed to have died of COVID-19](#)
- Information on diagnostics of the COVID-19 virus can be found in our [detailed FAQ document](#).
- To increase our testing capacity, NCDC has issued guidelines for the [integration of private labs](#).
- Guidelines for [businesses and employers](#) have been updated.
- NCDC has updated its [case definition](#) , [community case definition](#) and [case management guide](#).
- NCDC releases periodic [public health advisories](#) to Nigerians on the COVID-19 disease.
- To adhere to post-lockdown measures, NCDC has released an [advisory on the use of face masks](#), as well as information on the [Use of Cloth face masks](#) and [how to make your cloth face masks](#).
- NCDC has released guidelines for the [management of pregnant women and nursing mothers](#) during the pandemic.
- To address burials of loved ones who die from COVID-19, guidelines have been issued to advise on the [management of dead bodies](#).
- For health centres managing cases, the following documents have been released- a guideline for the [Rational Use of Personal Protective Equipment in the care of COVID-19 cases](#).
- As part of plans to increase the testing capacity of the country, the NCDC published a [National Strategy to Scale Up Access to Coronavirus Disease Testing in Nigeria](#) document.
- The Presidential Task Force has published policies and announcements on COVID-19 [available on the website of the Presidency](#) – including presidential addresses, task force updates and information on livelihood and economic support.

RESPONSE

On 28th February 2020, a multi-sectoral Emergency Operations Centre (EOC) was activated at Level 3 – the highest emergency level in Nigeria –led by NCDC in close coordination with the State Public Health EOCs (PHEOC).

- **Conducted a virtual strategic coordination meeting with the national response team deployed to Kano State to improve current response efforts**
- **Monitoring of 8,214 Persons of Interest (POI)/returnees since 6th May 2020 in Lagos and Abuja with 6,264 tested out of which 509 were positive and 5755 were negative as at 20th July 2020**
- **Conducted weekly data quality monitoring and tracking of improvements**
- **Conducted refresher training for Infection Prevention and Control (IPC) committee members in Ondo State**
- **Ongoing review of IPC guidelines on rational use of Personal Protective Equipment (PPE)**
- **Commenced additional deployment of response materials, laboratory supplies and commodities to states**
- **Finalised strategies to facilitate data utilisation report from states**

- **Developed advisory and jingle script for Salah celebration**
- Developed a dashboard for national, state and LGA level analysis of COVID-19 data in collaboration with partners
- Ongoing optimisation of University of Nigeria Teaching Hospital (UNTH) laboratory, Enugu State
- Facilitated the training of 45 health care workers in Ekiti State
- Conducted supportive supervision of Infection Prevention and Control (IPC) activities provided at Karu Hospital Isolation Centre, FCT
- Supplied Personal Protective Equipment (PPE) and commodities to Federal Medical Centre Jabi, FCT
- Supported the Universal Basic Education Commission (UBEC) in the development of a draft handbook for teachers on COVID-19 prevention in schools
- All education materials can be found via www.covid19.ncdc.gov.ng