



COVID-19 SITUATION REPORT

WEEKLY EPIDEMIOLOGICAL REPORT 3

Epi Week 44: 26th October – 1st November 2020

DATA AS REPORTED AND ACCURATE BY NCDC AS AT MIDNIGHT 1ST NOVEMBER 2020

STATE OF THE NATION

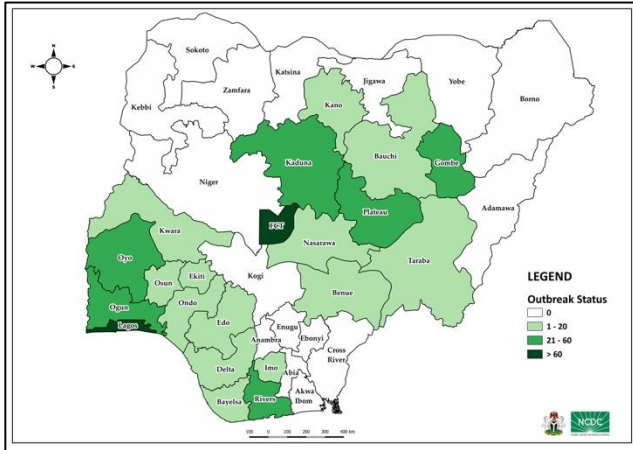


Fig 1. Distribution of cases (EpiWeek 44 only)

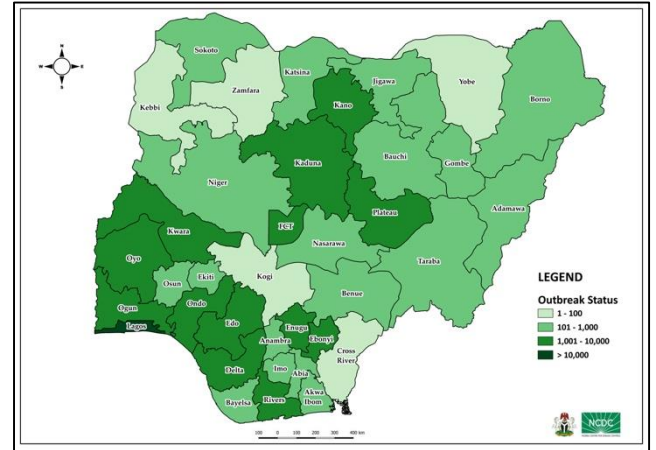


Fig 2. Distribution of cumulative cases

HIGHLIGHTS

- In Week 44, the number of new confirmed cases increased to **972** from **552** in week 43. These were reported in **21** states (Tables 1 & 2).
- In Week 44, the number of discharged cases increased to **1,325** from **854** in week 43. These were reported in **22** states (Tables 1 & 3).
- Cumulatively, since the outbreak began in Week **9**, there have been **1,146** deaths reported with a case fatality rate (CFR) of **1.8%** (Tables 1 & 4).
- The number of states, and the FCT, that have reported a death in the last one week are **6** (Tables 1 & 4).
- In Week 44, the number of international travellers with a positive result after the 7th day of arrival increased to **6** from **4** in week 43.
- In Africa, the count for confirmed COVID-19 cases is **1,785,714** with **42,899** resulting in a case fatality rate of **2.4%**
- Globally, the count for confirmed COVID-19 cases is **45,942,902** with **1,192,644** deaths resulting in a case fatality rate of **2.6%**

GENERAL FACT SHEET – DATA AS AT 1ST NOVEMBER 2020

Table 1: States with reported laboratory-confirmed COVID-19 cases, recoveries, deaths, samples tested and days since last reported case

| STATES | CONFIRMED | | RECOVERIES | | DEATHS | | Total | TESTING | | ACTIVE CASES |
|-------------|-----------|-----------|------------|-----------|--------|-----------|---------|---------------------|-----|--------------|
| | Total | Last Week | Total | Last Week | Total | Last Week | | Last Week | | |
| Abia | 898 | 0 | 872 | 0 | 8 | 0 | 9,027 | 382 | 18 | |
| Adamawa | 257 | 0 | 238 | 9 | 19 | 0 | 2,812 | 244 | 0 | |
| Akwa Ibom | 295 | 0 | 287 | 3 | 8 | 0 | 3,456 | 158 | 0 | |
| Anambra | 277 | 0 | 248 | 0 | 19 | 0 | 2,585 | 226 | 10 | |
| Bauchi | 713 | 3 | 696 | 0 | 14 | 0 | 8,953 | 114 | 3 | |
| Bayelsa | 413 | 10 | 381 | 9 | 21 | 0 | 2,629 | 105 | 11 | |
| Benue | 493 | 7 | 460 | 25 | 11 | 0 | 4,027 | 134 | 22 | |
| Borno | 745 | 0 | 705 | 0 | 36 | 0 | 13,108 | 348 | 4 | |
| Cross River | 87 | 0 | 74 | 0 | 9 | 0 | 1,612 | 54 | 4 | |
| Delta | 1,814 | 2 | 1,737 | 1 | 49 | 0 | 13,164 | 326 | 28 | |
| Ebonyi | 1,049 | 0 | 1,011 | 0 | 30 | 0 | 6,190 | 30 | 8 | |
| Edo | 2,666 | 18 | 2,531 | 9 | 109 | 1 | 18,537 | 767 | 26 | |
| Ekiti | 335 | 3 | 320 | 4 | 6 | 0 | 6,948 | 74 | 9 | |
| Enugu | 1,314 | 0 | 1,269 | 0 | 21 | 0 | 8,618 | 332 | 24 | |
| FCT | 6,118 | 151 | 5,345 | 9 | 81 | 2 | 78,670 | 3,727 | 692 | |
| Gombe | 937 | 54 | 837 | 90 | 25 | 0 | 24,869 | 583 | 75 | |
| Imo | 617 | 3 | 583 | 3 | 12 | 0 | 7,323 | 297 | 22 | |
| Jigawa | 325 | 0 | 308 | 0 | 11 | 0 | 2,985 | 11 | 6 | |
| Kaduna | 2,655 | 38 | 2,567 | 49 | 43 | 1 | 26,226 | 728 | 45 | |
| Kano | 1,747 | 5 | 1,684 | 2 | 54 | 0 | 52,895 | 1,152 | 9 | |
| Katsina | 952 | 0 | 928 | 49 | 24 | 0 | 24,184 | 265 | 0 | |
| Kebbi | 93 | 0 | 84 | 0 | 8 | 0 | 948 | 26 | 1 | |
| Kogi | 5 | 0 | 3 | 0 | 2 | 0 | 301 | 33 | 0 | |
| Kwara | 1,069 | 2 | 1,019 | 0 | 26 | 0 | 6,570 | 176 | 24 | |
| Lagos | 21,287 | 480 | 20,423 | 623 | 217 | 10 | 168,920 | 28,838 ^a | 647 | |
| Nasarawa | 482 | 4 | 325 | 0 | 13 | 0 | 6,978 | 69 | 144 | |
| Niger | 274 | 0 | 259 | 10 | 12 | 0 | 5,823 | 8 | 3 | |
| Ogun | 2,047 | 37 | 1,922 | 76 | 30 | 1 | 17,772 | 2136 | 95 | |
| Ondo | 1,667 | 1 | 1,585 | 0 | 37 | 0 | 8,978 | 93 | 45 | |

| STATES | CONFIRMED | | RECOVERIES | | DEATHS | | TESTING | | ACTIVE CASES |
|----------------|---------------|------------|---------------|--------------|--------------|-----------|----------------|---------------|--------------|
| | Total | Last Week | Total | Last Week | Total | Last Week | Total | Last Week | |
| Osun | 929 | 6 | 897 | 14 | 20 | 0 | 5,567 | 178 | 12 |
| Oyo | 3,451 | 28 | 2,616 | 55 | 43 | 1 | 24,503 | 696 | 792 |
| Plateau | 3,650 | 56 | 3,503 | 223 | 33 | 0 | 34,947 | 949 | 114 |
| Rivers | 2,831 | 58 | 2,678 | 53 | 59 | 0 | 47,716 | 3,102 | 94 |
| Sokoto | 165 | 0 | 147 | 2 | 17 | 0 | 6963 | 960 | 1 |
| Taraba | 146 | 6 | 107 | 7 | 6 | 0 | 2540 | 11 | 33 |
| Yobe | 82 | 0 | 68 | 0 | 8 | 0 | 1191 | 172 | 6 |
| Zamfara | 79 | 0 | 73 | 0 | 5 | 0 | 1128 | 5 | 1 |
| Total | 62,964 | 972 | 58,790 | 1,325 | 1,146 | 16 | 659,663 | 47,509 | 3,028 |

Note ^a Data from Lagos State represents a cumulative number of tests done in the last 4 weeks but reported in the last week

RETURNING PASSENGERS TESTS

Over the last week, the following laboratories carried out COVID-19 tests for returning passengers:

| | |
|---------------------|------------|
| 54Gene (Lagos): | 5 |
| 54Gene (FCT): | 88 |
| MEDICAID (FCT): | 72 |
| CEDARCREST (FCT): | 85 |
| DNA Labs (FCT): | 72 |
| EHA Clinics: | 138 |
| TOTAL TESTS: | 460 |

BACKLOG OF REPORTED TESTS

| Laboratory | Number |
|---|---------------|
| EHA (FCT): | 151 |
| Lagos | 29,552 |
| TOTAL TESTS: | 29,703 |
| LUTH-2,403; LSB-9,669; NIMR-627; CPHL-233; Biologix-696; O2-956; Total-333; Clina Lancet-5,015; Medbury-1,213; Clinix-1,819; VCARE-2,102; Synlab-394; AML Ikeja-2,629; Zaine lab-1,463 | |

DAILY EPICURVE

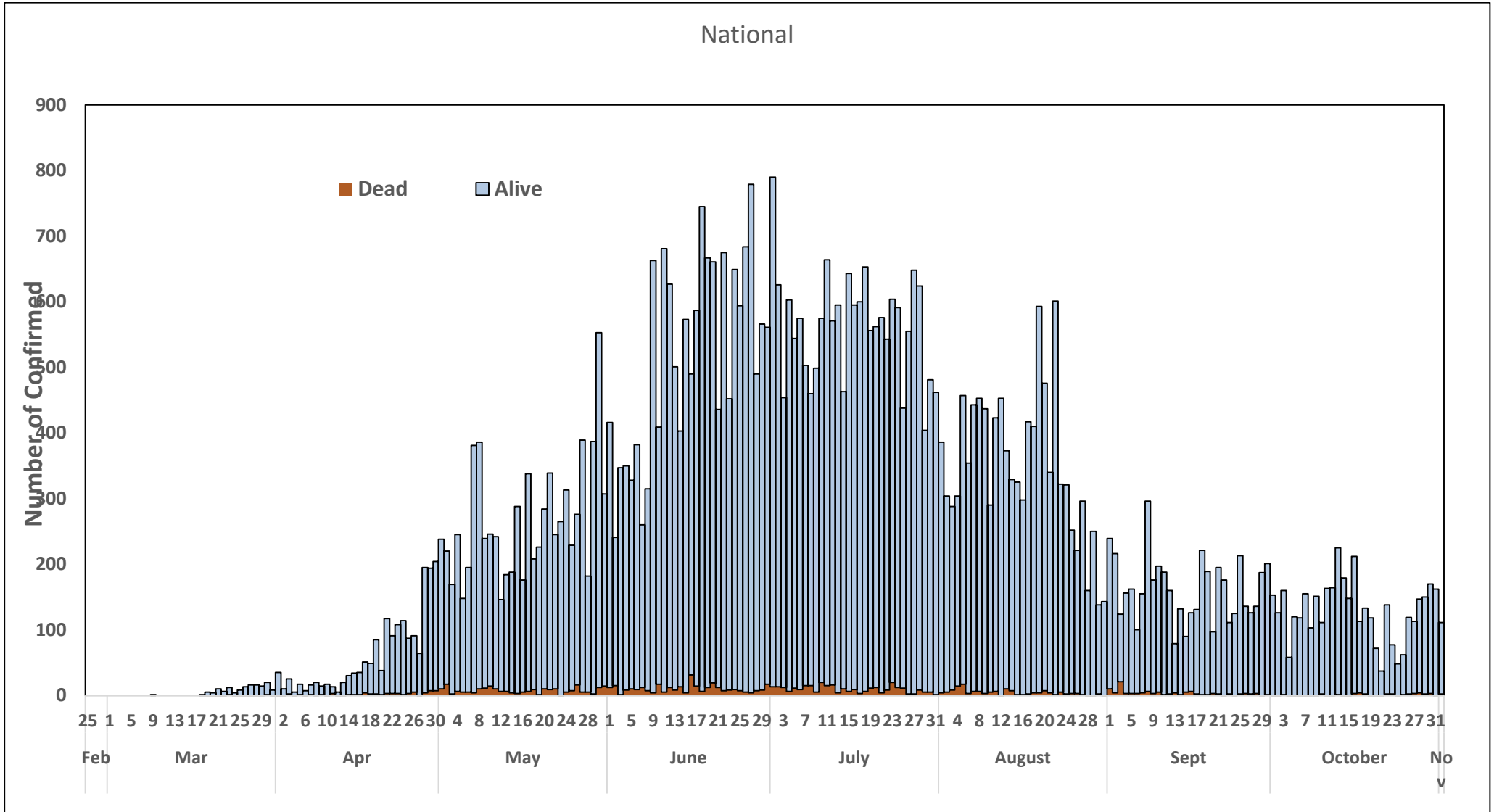


Figure 3: Daily epidemic curve of confirmed cases (WK9 – WK44) as reported per day

AGE-GENDER BREAKDOWN

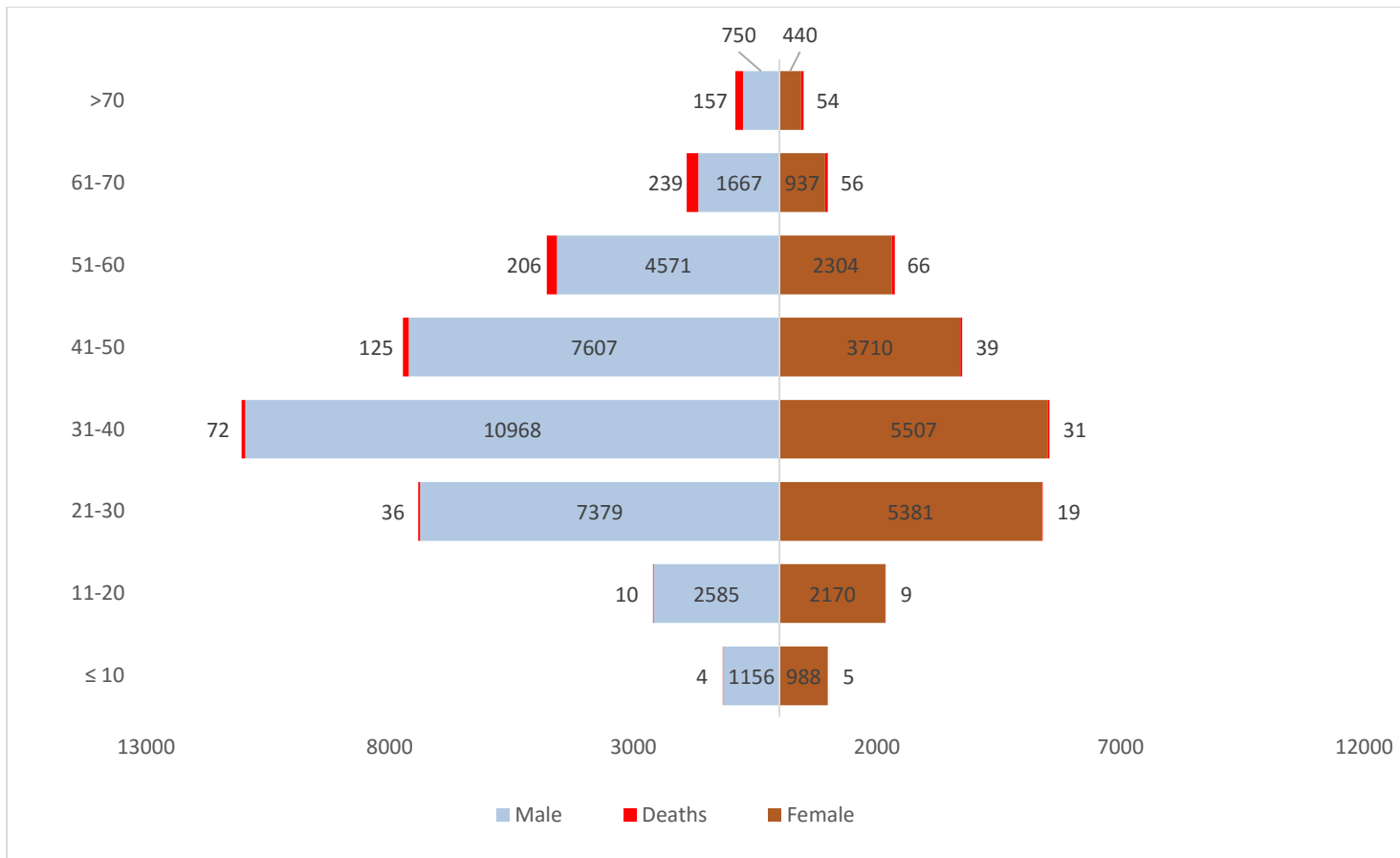


Figure 6: Chart with age and gender breakdown of cases and deaths (Wks 9 – 44)

IN FOCUS: WORLD BANK REGIONAL DISEASE SURVEILLANCE SYSTEMS ENHANCEMENT (REDISSE) PROJECT

State governments play a critical role in executing the necessary policies and plans to control the transmission of COVID-19 in Nigeria. Since July 2020, the Nigeria Centre for Disease Control with funding from the World Bank REDISSE project, has supported each state with One Hundred Million (₦100,000,000.00) naira to strengthen state-level response to COVID-19.

As part of this support, states were required to submit a COVID-19 Incident Action Plan (IAP) outlining various activities targeted at a controlling transmission. These activities include coordination, risk communication, surveillance, Infection Prevention and Control (IPC), case management and logistics. State IAPs have been published via <https://ncdc.gov.ng/statesIAP>

The NCDC and World Bank continue to work with each state to monitor and support their progress, including the deployment of technical assistants. For effective delivery, daily reports are received from the states to track the progress in the implementation of planned activities. So far, 35% of all response activities in the project nationwide completed and 37% ongoing. Efforts are being made to support states with identified challenges. These range from low sample collection and testing, inadequate dedicated staff, insufficient community mobilisation amongst others.

The NCDC continues to work with State Ministries of Health through their States' Public Emergency Operations Centre to provide technical support and strengthen state-level response activities. Together, with support from human resource at all levels of government and our partners, we will keep pushing to ensure a safer and healthier Nigeria for us all.

RESPONSE

On 28th February 2020, a multi-sectoral Emergency Operations Centre (EOC) was activated at Level 3 – the highest emergency level in Nigeria –led by NCDC in close coordination with the State Public Health EOCs (PHEOC) and through the deployment of **43** RRTs to states.

COORDINATION

- **Tracking of prioritised State Incident Action Plan (IAP) implementation performance in 35 states**
- **Evaluated private laboratories testing returning travellers through key performance indicators**
- **Conducted laboratory training of trainers (TOT) on sample collection and rapid diagnostic testing for NYSC camp re-opening**
- **Training of healthcare workers on Infection Prevention and Control (IPC), Surveillance and Risk Communication and Community Engagement (RCCE) has been conducted across the hotspots LGAs**
- **Conducted assessment of schools' readiness and preparedness for re-opening, following closure due to COVID-19-related curfew**
- **Developed Information Education and Communication (IEC) materials for NYSC re-opening**
- **Trained state communication teams for NYSC re-opening**
- **Engaging with State IPC Focal Persons on nationwide NYSC orientation camp assessment**
- **Trained community Health workers from across all wards/LGAs of Kaduna State supported by partners**
- **Developed advisory on use of Rapid Diagnostics Tests (RDT) Kits for States**
- **Conducted media appearance on Human Right radio, WAZOBIA, Kano Radio and FM Enugu on with discussion on safe school resumption**
- **Ongoing airing of new jingles by Federal Ministry of Information**
- **Conducted strategic engagement with State Epidemiologist (SEs) and thematic COVID-19 response team leads to identify state specific challenges and improve on the ongoing response**

PREPAREDNESS

Since the confirmation of the first case on 27th February 2020, the NCDC has released advisories and statements to help Nigerians and affected groups in particular to respond to the pandemic

- NCDC published guidance on the use of antigen RDTs: [Guidance on the use of Antigen Rapid Diagnostic Kits for diagnosis of SARS-CoV-2 infection in Nigeria](#)
- NCDC published guidance on safe school re-opening: [Public Health guidance for Safe School re-opening in Nigeria](#)
- NCDC published second interim guidance – Infection Prevention and Control: [Recommendations during health care provision for suspected and confirmed cases of COVID-19](#)
- NCDC recently published the first edition of a quick reference guide on setting up sample collection centre - [A step by step guide on setting up a sample collection centre](#)
- NCDC has launched an online course on [Infection, Prevention and Control \(IPC\) for COVID-19](#) NCDC eLearning platform
- Ahead of forthcoming elections in the country, NCDC has issued [Guidelines for Conducting Elections During the COVID-19 Outbreak in Nigeria](#).
- To protect our elders, and those with pre-existing medical conditions, NCDC has issued an [Advisory for Vulnerable Groups](#).
- NCDC has released [guidelines on the re-opening of places for worship](#).
- NCDC has released [Strategies to Improve Surveillance for COVID-19 Guidance for States](#)
- The Nigeria Police Force has released COVID-19 operational guidelines for the [Police and other Law Enforcement Agencies](#) in Nigeria
- Guidelines have been issued for the [safe transportation of remains of persons suspected or confirmed to have died of COVID-19](#)
- Information on diagnostics of the COVID-19 virus can be found in our [detailed FAQ document](#).
- To increase our testing capacity, NCDC has issued guidelines for the [integration of private labs](#).
- Guidelines for [businesses and employers](#) have been updated.
- NCDC has updated its [case definition](#) , [community case definition](#) and [case management guide](#).
- NCDC releases periodic [public health advisories](#) to Nigerians on the COVID-19 disease.
- To adhere to post-lockdown measures, NCDC has released an [advisory on the use of face masks](#), as well as information on the [Use of Cloth face masks](#) and [how to make your cloth face masks](#).
- NCDC has released guidelines for the [management of pregnant women and nursing mothers](#) during the pandemic.
- To address burials of loved ones who die from COVID-19, guidelines have been issued to advise on the [management of dead bodies](#).
- For health centres managing cases, the following documents have been released- a guideline for the [Rational Use of Personal Protective Equipment in the care of COVID-19 cases](#).
- As part of plans to increase the testing capacity of the country, the NCDC published a [National Strategy to Scale Up Access to Coronavirus Disease Testing in Nigeria](#) document.
- The Presidential Task Force has published policies and announcements on COVID-19 [available on the website of the Presidency](#) – including presidential addresses, task force updates and information on livelihood and economic support.

INFORMATION RESOURCES

- Nigeria Centre for Disease Control: www.covid19.ncdc.gov.ng | www.ncdc.gov.ng
- Nigerian Presidency Website on COVID-19: www.statehouse.gov.ng/COVID19
- Africa CDC: www.africa.cdc.org | <https://africacdc.org/covid-19/> (source for Africa updates)
- WHO Coronavirus Disease (COVID-19) Dashboard (source for global updates) <https://covid19.who.int/>