



Lassa fever Situation Report

Epi Week 45: 7 – 13 November 2022

Key Points

Table 1: Summary of current week (45), cumulative from Epi week 1–45, 2022 and comparison with previous year (2021)

Reporting Period	Suspected cases	Confirmed cases	Probable cases	Deaths (Confirmed cases)	Case Fatality Ratio (CFR)	States and LGAs affected (Confirmed cases)
Current week (week 45)	96	10	0	0	0.0%	State(s): 5 LGA(s): 7
2022 Cumulative (week 45)	7389	985	37	177	18.0%	State(s): 26 LGA(s): 107
2021 Cumulative (week 45)	3679	418	3	89	21.3%	State(s): 15 LGA(s): 61

Highlights

- In week 45, the number of new confirmed cases decreased from 17 in week 44, 2022 to 10 cases. These were reported from Edo, Ondo, Ebonyi, Delta and Oyo States (Table 3)
- Cumulatively from week 1 to week 44, 2022, 177 deaths have been reported with a case fatality rate (CFR) of 18.2% which is lower than the CFR for the same period in 2021 (21.7%)
- In total for 2022, 26 States have recorded at least one confirmed case across 107 Local Government Areas (Figures 2 and 3)
- Of all confirmed cases, 71% are from Ondo (33%), Edo (26%), and Bauchi (12%) States.
- The predominant age group affected is 21-30 years (Range: 0 to 90 years, Median Age: 30 years). The male-to-female ratio for confirmed cases is 1:0.8 (Figure 4)
- The number of suspected cases has increased compared to that reported for the same period in 2021
- No new Healthcare worker was affected in the reporting week 45
- National Lassa fever multi-partner, multi-sectoral Technical Working Group (TWG) continues to coordinate the response activities at all levels

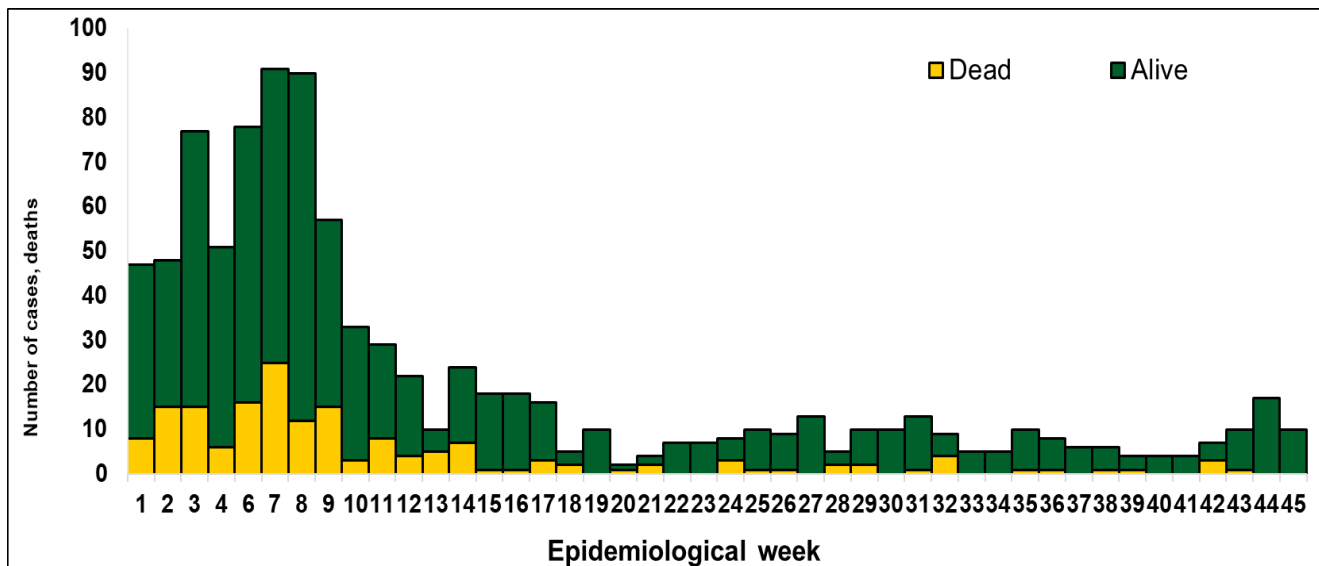


Figure 1. Confirmed Lassa fever cases in Nigeria epidemiological week 1-45, 2022

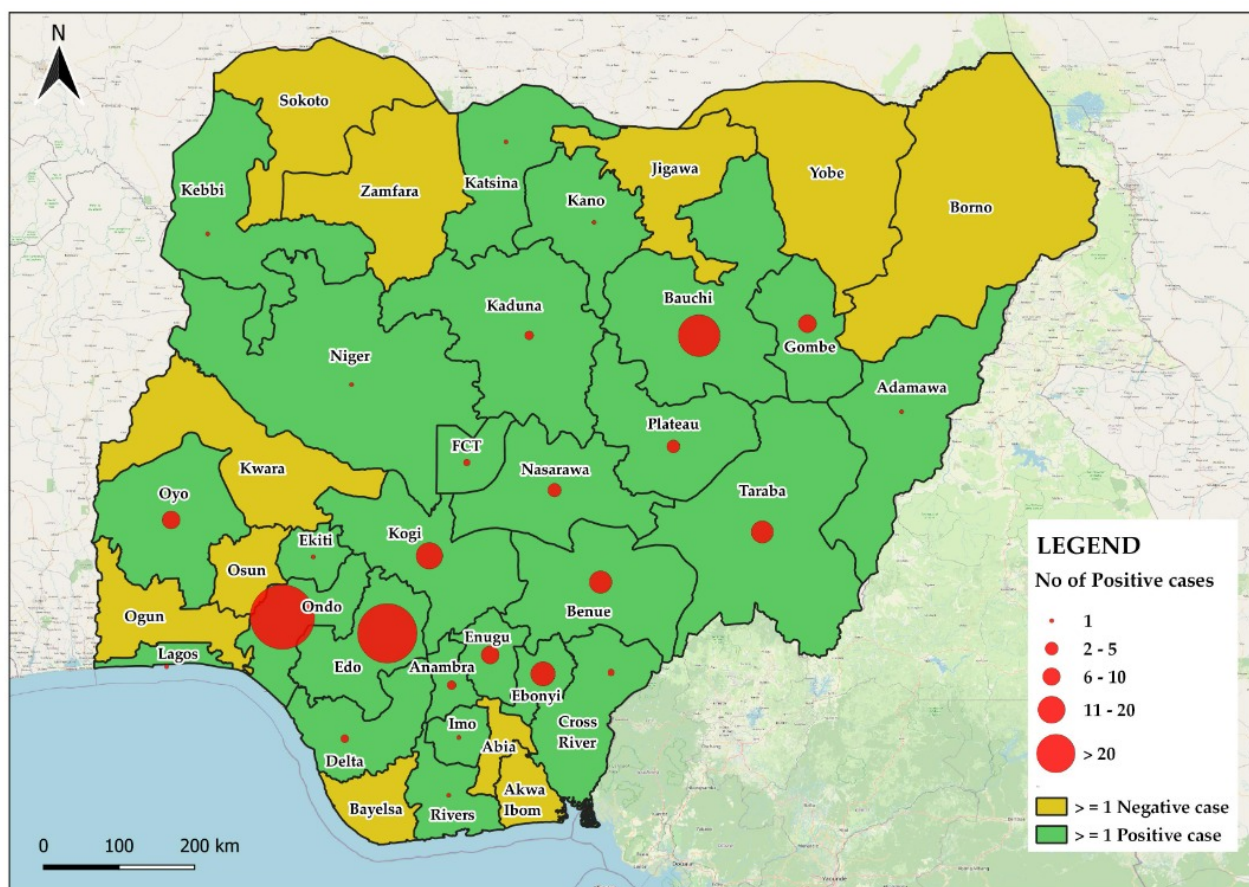


Figure 2. Confirmed Lassa fever cases by States in Nigeria, week 45, 2022

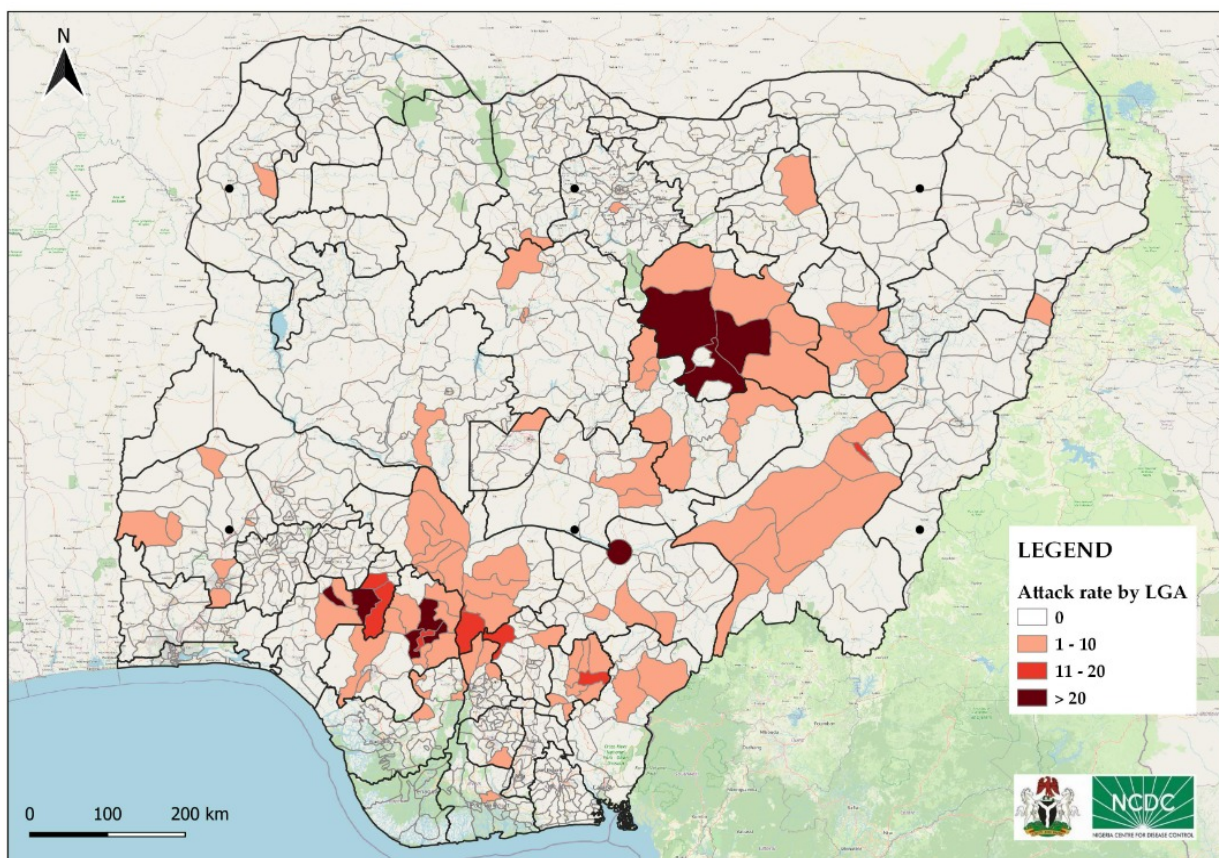


Figure 3. Confirmed Lassa fever rate per 100,000 population for LGAs in Nigeria, week 45, 2022

Table 2: Key indicators for current week 2022 and trend compared to previous week, Nigeria

Symptomatic contacts	Number for current week	Trend from previous week	Cumulative number for 2022
Probable cases	0	↔ ↔	37
Health Care Worker affected	0	↔ ↔	55
Cases managed at the treatment centres	10	↔	904
Contact tracing			
Cumulative contact listed	0	↔ ↔	3467
Contacts under follow up	13	↔	13
Contacts completed follow up	0	↔	3394
Symptomatic contacts	0	↔ ↔	101
Positive contacts	0	↔ ↔	49
Contacts lost to follow up	0	↔ ↔	11

Key

- ↑ Increase
- ↓ Decrease
- ↔ No difference

Table 3. Weekly and Cumulative number of suspected and confirmed cases for 2022

States	Current week: (Week 45)					Cumulative (Week 1 - 45)				
	Cases				Deaths	Cases				Deaths
	Suspected	Confirmed	Trend	Probable HCW *	(Confirmed Cases)	Suspected	Confirmed	Probable HCW *	(Confirmed Cases)	
1 Ondo	21	3	▼			1510	326	11	54	
2 Edo	62	4	▼			2916	256	3	29	
3 Bauchi						860	122	26	12	
4 Kogi			▼			138	49		9	
5 Ebonyi	4	1	▲			269	43	1 3	19	
6 Benue			▼			274	36	2 3	8	
7 Taraba						98	34	3 1	15	
8 Gombe						249	24	8 2	8	
9 Oyo	2	1				119	23	14 4	4	
10 Enugu	1					98	22	1	3	
11 Nasarawa	2					124	12	5	6	
12 Plateau						87	10			
13 Anambra						35	5		1	
14 Delta	1	1	▲			79	4			
15 Kaduna						93	4	3 1	3	
16 Cross River						17	4		3	
17 FCT	1					59	2			
18 Imo						55	1			
19 Ekiti						4	1			
20 Adamawa						19	1			
21 Niger						13	1			
22 Kebbi						7	1			
23 Lagos						48	1		1	
24 Kano						38	1		1	
25 Katsina						17	1		1	
26 Rivers						11	1			
27 Zamfara						5				
28 Sokoto						3				
29 Akwa Ibom						8				
30 Osun						8		1		
31 Yobe						29				
32 Abia	2					22				
33 Borno						20				
34 Bayelsa						8				
35 Jigawa						9				
36 Ogun						20				
37 Kwara						14				
Total	96	10	▼	0	0	7383	985	37	55	177

Key	
▼	Decrease
▲	Increase

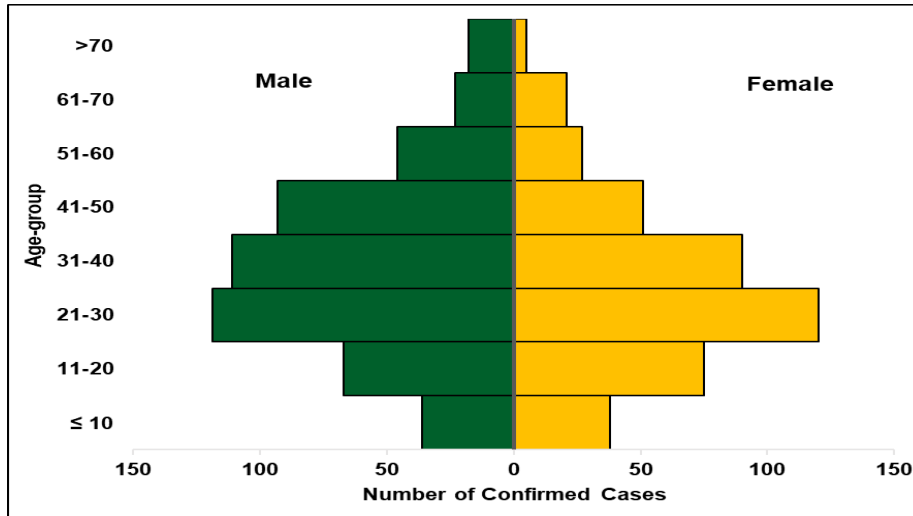


Figure 4. Age and sex pyramid showing the number of confirmed Lassa fever cases for 2022

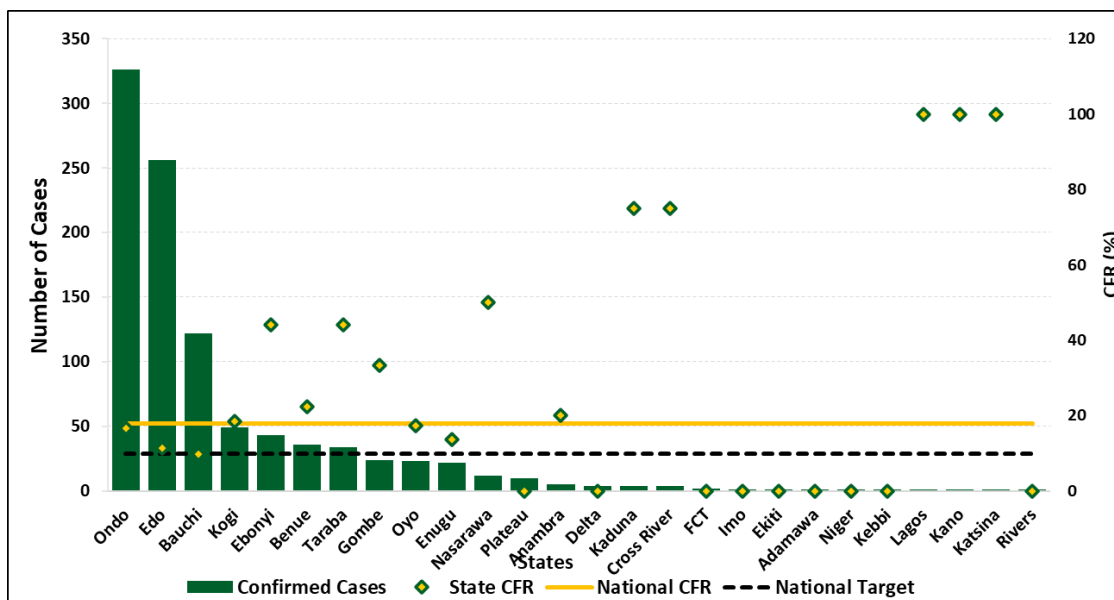


Figure 5: Number of confirmed cases with case fatality rate (CFR) by state week 45, 2022

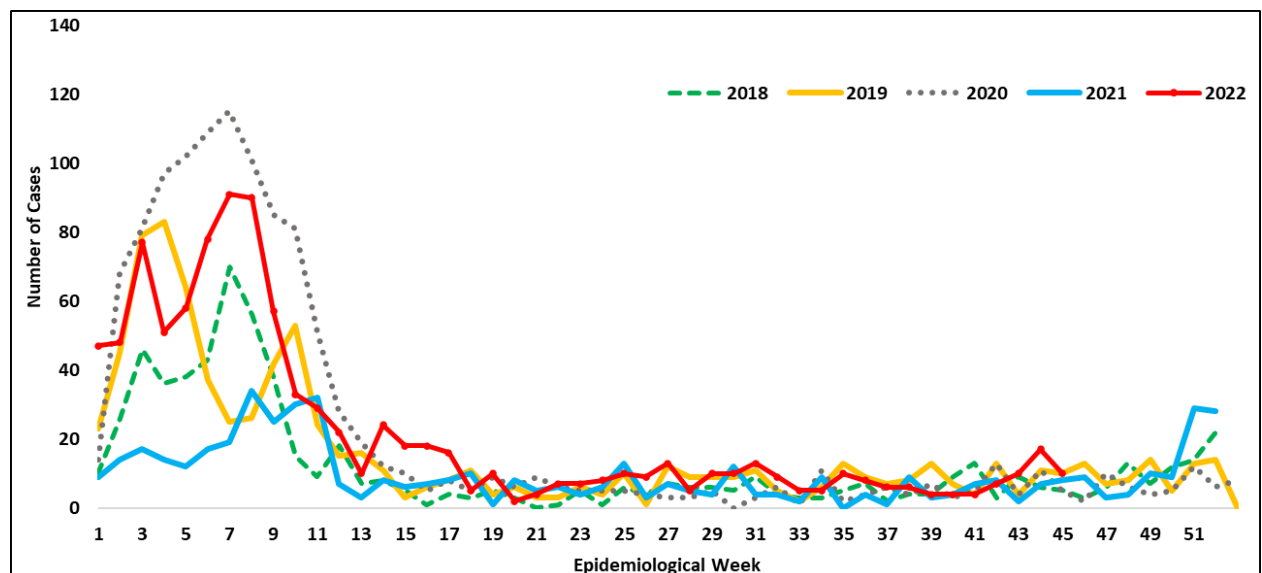


Figure 6: Trend of confirmed cases by epidemiological week, 2018– 2022, Nigeria

- Collaborated with World Health Organization (WHO), Coalition for Epidemic Preparedness Innovation (CEPI), and Africa Centre for Disease Control (ACDC) in a workshop towards accelerating the licensure of Lassa fever Vaccines
- Implementation of Nigeria Lassa fever epidemiological Study supported by CEPI
- Implementation of human centred design risk communication activities in most affected States
- Supported Federal Ministry of Health and Irrua Specialist Teaching Hospital Edo State on training of health care workers for clinical management of Lassa fever
- Conducted sub-national Lassa fever surveillance and response intensive workshop
- Deployed of National Rapid Respond Teams (NRRT) to Nasarawa, FCT, Edo, Ondo, Bauchi, Ebonyi, Oyo, Taraba, and Benue to support the response to Lassa fever during the emergency phase
- Supported Lassa fever treatment centre with the engagement of adhoc data clerks to upload case management data on SORMAS
- Continuous distribution of medical response commodities to states and treatment centres across Nigeria
- Risk communications and community engagement activities have been scaled up across states using television, radio, print, social media, and other strategies
- Implementation of Lassa fever environmental response campaign in high burden states by Federal Ministry of Environment
- State Public Health Emergency Operations Centre activated in affected States
- The Eight Lassa fever molecular laboratories in the NCDC network are working full capacity to ensure that all samples are tested, and results provided within the shortest turnaround time
- Confirmed cases are treated at designated treatment centres across the states
- Dissemination of reviewed case management and safe burial practices guidelines
- Dissemination of reviewed Infection Prevention and Control (IPC) guideline and health facility IPC advisory
- The 2022 National Emergency Operations Centre response mode was activated in January 2022 and de-escalated in May 2022
- Lassa fever TWG continues to provide effective multi-sectoral, multi-disciplinary coordination of Lassa fever response
- Lassa fever preparedness assessment carried out for 36 States and FCT at the onset of the outbreak
- Lassa fever alert letters sent to States at the onset of outbreak towards preparedness for the outbreak

Notes on this report

Data Source

Information for this disease was case based data retrieved from the National Lassa fever Emergency Operations Centre.

Case definitions

- **Suspected case:** any individual presenting with one or more of the following: malaise, fever, headache, sore throat, cough, nausea, vomiting, diarrhoea, myalgia, chest pain, hearing loss and either a. History of contact with excreta or urine of rodents b. History of contact with a probable or confirmed Lassa fever case within a period of 21 days of onset of symptoms OR Any person with inexplicable bleeding/hemorrhagia.

- **Confirmed case:** any suspected case with laboratory confirmation (positive IgM antibody, PCR or virus isolation)
- **Probable case:** any suspected case (see definition above) who died or absconded without collection of specimen for laboratory testing
- **Contact:** Anyone who has been exposed to an infected person, or to an infected person's secretions, excretions, or tissues within three weeks of last contact with a confirmed or probable case of Lassa fever

Calculations

- Case Fatality Rate (CFR) for this disease is reported for confirmed cases only

VIRAL HAEMORRHAGIC FEVER QUICK REFERENCE GUIDE

For social mobilization https://ncdc.gov.ng/themes/common/docs/vhfs/83_1517222929.pdf
For LGA Rapid Response Team https://ncdc.gov.ng/themes/common/docs/vhfs/82_1517222811.pdf
Healthcare worker laboratory https://ncdc.gov.ng/themes/common/docs/vhfs/81_1517222763.pdf
For healthcare workers https://ncdc.gov.ng/themes/common/docs/vhfs/80_1517222586.pdf
For community informant https://ncdc.gov.ng/themes/common/docs/vhfs/79_1517222512.pdf

NATIONAL GUIDELINES FOR LASSA FEVER CASE MANAGEMENT

https://ncdc.gov.ng/themes/common/docs/protocols/92_1547068532.pdf

VIRAL HAEMORRHAGIC FEVER AND RESPONSE PLAN

https://ncdc.gov.ng/themes/common/docs/protocols/24_1502192155.pdf

NATIONAL GUIDELINE FOR INFECTION, PREVENTION AND CONTROL FOR VIRAL HAEMORRHAGIC FEVER

https://ncdc.gov.ng/themes/common/docs/protocols/24_1502192155.pdf

INFROMATION RESOURCE

Nigeria Centre for Disease Control: www.ncdc.gov.ng

