



# SITUATION REPORT

## Nigeria Centre For Disease Control (NCDC)

[www.ncdc.gov.ng](http://www.ncdc.gov.ng)

PLOT 800 EBITU UKIWE STREET, JABI ABUJA, NIGERIA. TOLL FREE CALL: 0800-970000-10. E: [info@ncdc.gov.ng](mailto:info@ncdc.gov.ng)



@NCDCgov

<b>TITLE:</b>	<b>CHOLERA OUTBREAK IN NIGERIA</b>
<b>SERIAL NUMBER:</b>	<b>18</b>
<b>EPI-WEEK:</b>	<b>38</b>
<b>DATE:</b>	<b>24<sup>th</sup> September, 2018</b>

### HIGHLIGHTS

- The multi-agency cholera Emergency Operations Centre (EOC) at NCDC is coordinating the national response
- Active transmission ongoing in six states: Zamfara, Adamawa, Borno, Katsina, Yobe and Kano
- National RRTs deployed to Borno, Katsina and Zamfara states to assess cholera situation and support ongoing outbreak response
- No cases reported in the following states in the last three or more weeks: Anambra, Bauchi, Ebonyi, FCT, Jigawa, Kaduna, Kogi, Niger and Plateau States

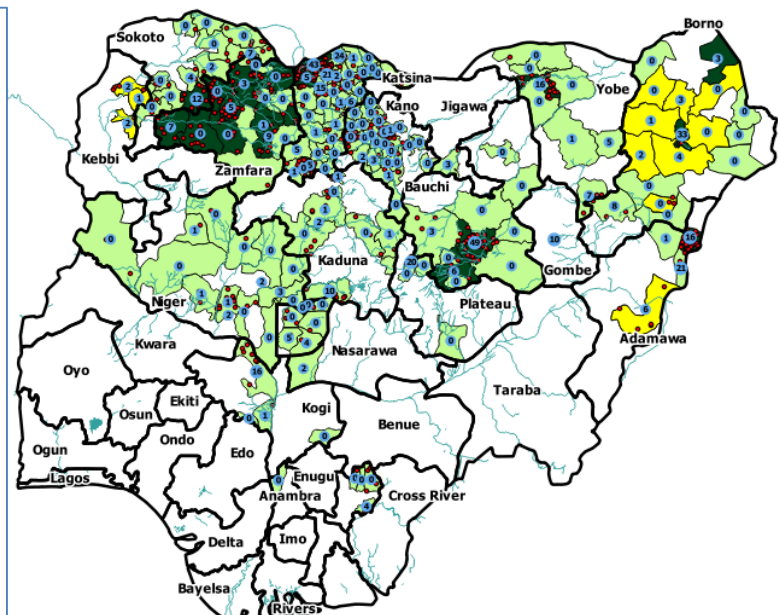
### EPI-Summary

- In week 38 (17<sup>th</sup> – 23<sup>th</sup> September); 1,328 new suspected cases were reported from six states- Zamfara (341), Katsina (212), Borno (561), Adamawa (101) Yobe (76) and Kano (37) including 18 deaths in Katsina (4), Borno (8) and Zamfara (6)
- In the reporting week, six samples were collected from Adamawa state and tested. All six samples were positive by Rapid Diagnostic Test (RDT). Only one sample was confirmed by culture
- As at 24<sup>th</sup> September, 2018, a total of 34,961 suspected cases including 758 deaths with CFR: (2.17%) have been reported from 19 States (Adamawa, Anambra, Bauchi, Borno, Ebonyi, FCT, Gombe, Jigawa, Kaduna, Kano, Katsina, Kebbi, Kogi, Nasarawa, Niger, Plateau, Yobe, Sokoto and Zamfara) since the beginning of 2018
- 25.41 % of the confirmed cases are aged 5 -14 years
- 50.5% female and 49.5% male affected

S/N	State	LGAs reporting in week 38 (n)	LGAs ever reported in 2018 cases (n)	Cases in week 38	Total cases reported (n)	Deaths in week 38	Total Deaths (n)	CFR (%)	Total culture positive (n)	Total RDT positive (n)
1	Bauchi	0	10	0	9405	0	35	0.37	15	44
2	Zamfara	9	14	341	7019	6	126	1.74	1	26
3	Katsina	6	37	212	5103	4	184	3.32	10	153
4	Borno	4	18	561	4210	8	45	0.27	0	105
5	Adamawa	1	5	101	2224	0	34	1.59	16	73
6	Kano	3	37	37	1723	0	67	4.08	0	21
7	Sokoto	-	14	-	1609	-	84	5.34	0	25
9	Yobe	4	10	168	1501	0	74	4.54	0	75
8	Niger	0	17	0	584	0	29	5.12	0	10
10	Kaduna	0	9	0	401	0	25	6.23	0	15
11	Plateau	0	4	0	347	0	6	1.72	3	19
12	FCT	0	5	0	221	0	14	6.33	0	9
13	Kebbi	0	3	0	198	0	7	3.53	0	5
14	Ebonyi	0	4	0	182	0	7	3.84	0	4
15	Kogi	0	4	0	102	0	8	7.84	0	17
19	Nasarawa	-	2	-	55	-	5	0.00	0	2
16	Gombe	0	1	0	46	0	4	8.70	0	10
17	Anambra	0	1	0	23	0	1	4.35	0	0
18	Jigawa	0	1	0	15	0	1	6.67	0	3
<b>Total</b>		<b>27</b>	<b>196</b>	<b>1,328</b>	<b>34,961</b>	<b>18</b>	<b>758</b>	<b>2.17</b>	<b>45</b>	<b>624</b>

(-) indicates state yet to report data in week 38

### Nigeria: States/LGAs affected by Cholera, Wk01-38 2018

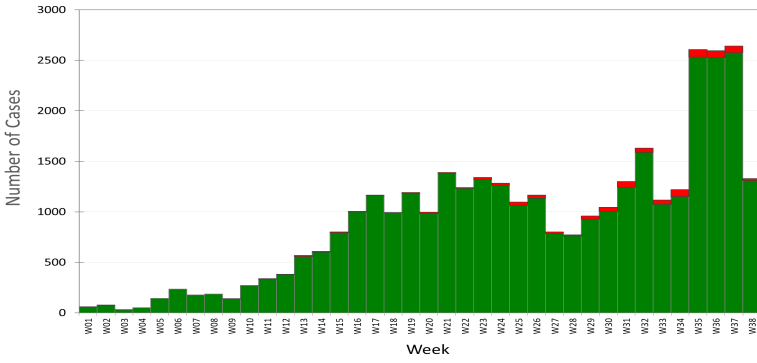


**Affected States**

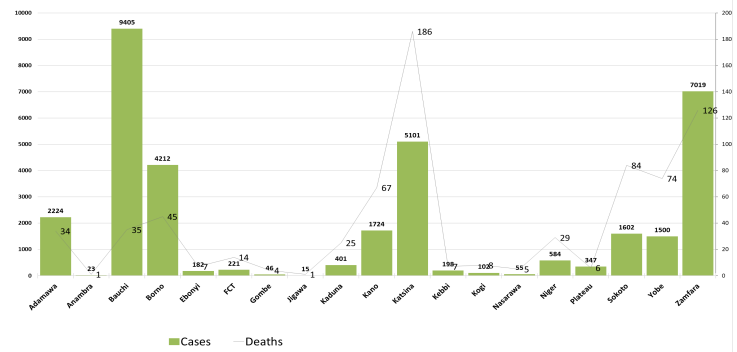
- No Cholera Cases Reported
- 1-200 Suspected Cholera Cases Reported, 164 LGAs (19 States)
- > 200 Suspected Cholera Cases Reported: 24 LGAs (9 States)
- New LGAs reporting (3 States) n = 9
- Deaths = 725
- Specimen Positive = 645 (Culture=45, RDT=624)

# Affected: States = 19; LGAs = 196; Total Suspected Cholera Cases = 34,215;

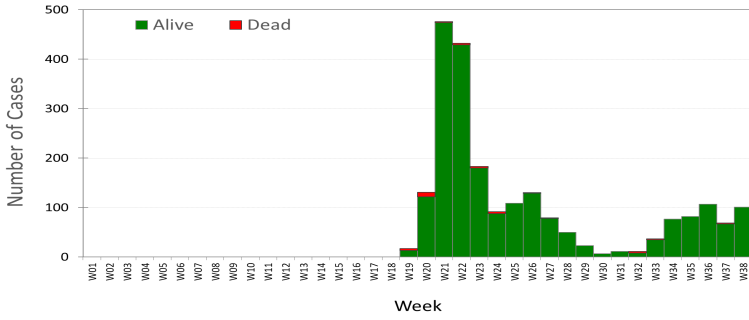
Nigeria: Reported Cholera Cases by Week, WK01-38 2018



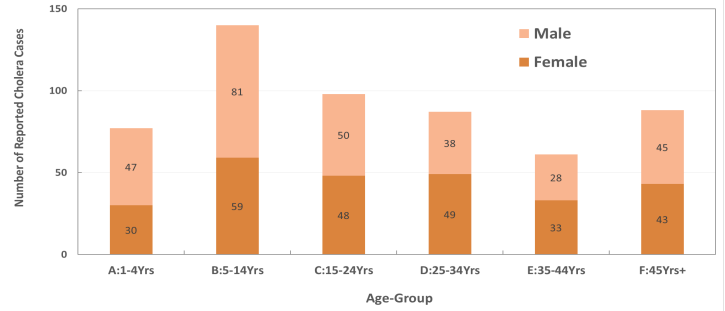
Nigeria: Reported Cholera Cases by State WK01-38, 2018



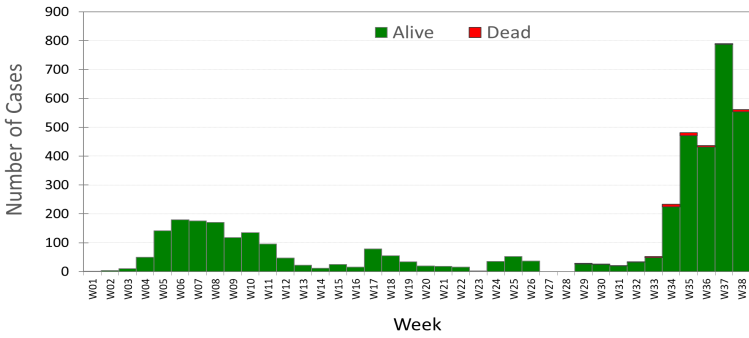
Adamawa: Reported Cholera Cases by Week, WK01-38 2018



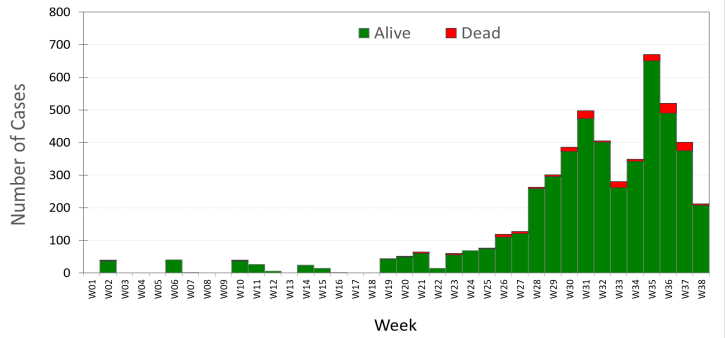
Positive Specimen: Age-Sex Distribution of Reported Cholera Cases WK 01-38, 2018



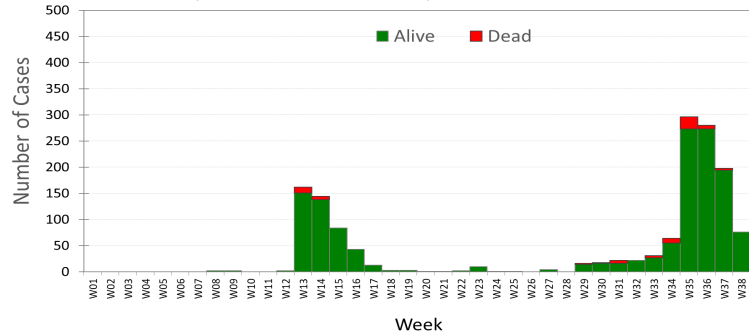
Borno: Reported Cholera Cases by Week, WK01-38 2018



Katsina: Reported Cholera Cases by Week, WK01-38 2018



Yobe: Reported Cholera Cases by Week, WK01-38 2018



Zamfara: Reported Cholera Cases by Week, WK01-38 2018

