



# SITUATION REPORT

## Nigeria Centre For Disease Control (NCDC)

[www.ncdc.gov.ng](http://www.ncdc.gov.ng)

PLOT 800 EBITU UKIWE STREET, JABI ABUJA, NIGERIA. TOLL FREE CALL: 0800-970000-10. E: [info@ncdc.gov.ng](mailto:info@ncdc.gov.ng)

[Twitter](#) [Facebook](#) @NCDCgov

|                |                                      |
|----------------|--------------------------------------|
| TITLE:         | 2018 LASSA FEVER OUTBREAK IN NIGERIA |
| SERIAL NUMBER: | 40                                   |
| EPI-WEEK:      | 40                                   |
| DATE:          | 7 <sup>th</sup> September 2018       |

### HIGHLIGHTS

- In the reporting Week 40 (October 1-7, 2018) **nine** new confirmed<sup>i</sup> cases were reported from Edo(5), Ondo(2) and Ebonyi(2) states with one new death in Edo(1) and three deaths in probable cases from Ebonyi state
- From 1<sup>st</sup> January to 7<sup>th</sup> October 2018, a total of 2648 **suspected<sup>i</sup>** cases have been reported from 22 states. Of these, **523 were confirmed positive, 15 probable, 2109 negative** (not a case)
- Since the onset of the 2018 outbreak, there have been 135 deaths in confirmed cases and 15 in probable cases. Case Fatality Rate in confirmed cases is 25.8% -*Table 1*
- 22 states have recorded at least one confirmed case across 89 Local Government Areas (Edo, Ondo, Bauchi, Nasarawa, Ebonyi, Anambra, Benue, Kogi, Imo, Plateau, Lagos, Taraba, Delta, Osun, Rivers, FCT, Gombe, Ekiti, Kaduna, Abia, Adamawa and Enugu). **Seventeen** states have exited the active phase of the outbreak while **five**- Edo, Delta, Ondo, Bauchi and Ebonyi states remain active<sup>iv</sup> -*Table 1/ Figure 1*
- In the reporting week 40, **one** new healthcare worker was infected. **Forty health care workers have been affected since the onset of the outbreak in seven states** –Ebonyi (16), Edo (15), Ondo (4), Kogi (2), Nasarawa (1), Taraba (1) and Abia (1) with ten deaths in Ebonyi (6), Kogi (1), Abia (1), Ondo (1) and Edo (1)
- 82% of all confirmed cases are from Edo (46%), Ondo (23%) and Ebonyi (13%) states
- Twelve patients are currently being managed at Irrua Specialist Teaching Hospital (ISTH) treatment Centre (6) Federal Medical Centre Owo (3), Abubakar Tafawa Balewa University Teaching Hospital Bauchi (1) and Federal Teaching Hospital Abakiliki (2) - *Table 1*
- A total of **7768** contacts have been identified from 22 states. Of these 379(4.9%) are currently being followed up, 7276 (93.7%) have completed 21 days follow up while 15(0.2%) were lost to follow up. 99(1.4%) symptomatic contacts have been identified, of which **36 (0.5%)** have tested positive from five states (Edo -20, Ondo-8, Ebonyi-3, Kogi -3 Bauchi-1 and Adamawa-1) - *Table 1*
- National RRT team (NCDC staff and NFELTP residents) deployed Delta state to support response
- Lassa fever treatment centres IPC and case management site assessment ongoing by NCDC team
- Lassa fever international Conference registration, abstract submission and travel scholarship now open to the public on the conference website [www.lic.ncdc.gov.ng](http://www.lic.ncdc.gov.ng)
- Lassa fever national multi-partner, multi-agency Technical Working Group(TWG) continues to coordinate response activities at all levels



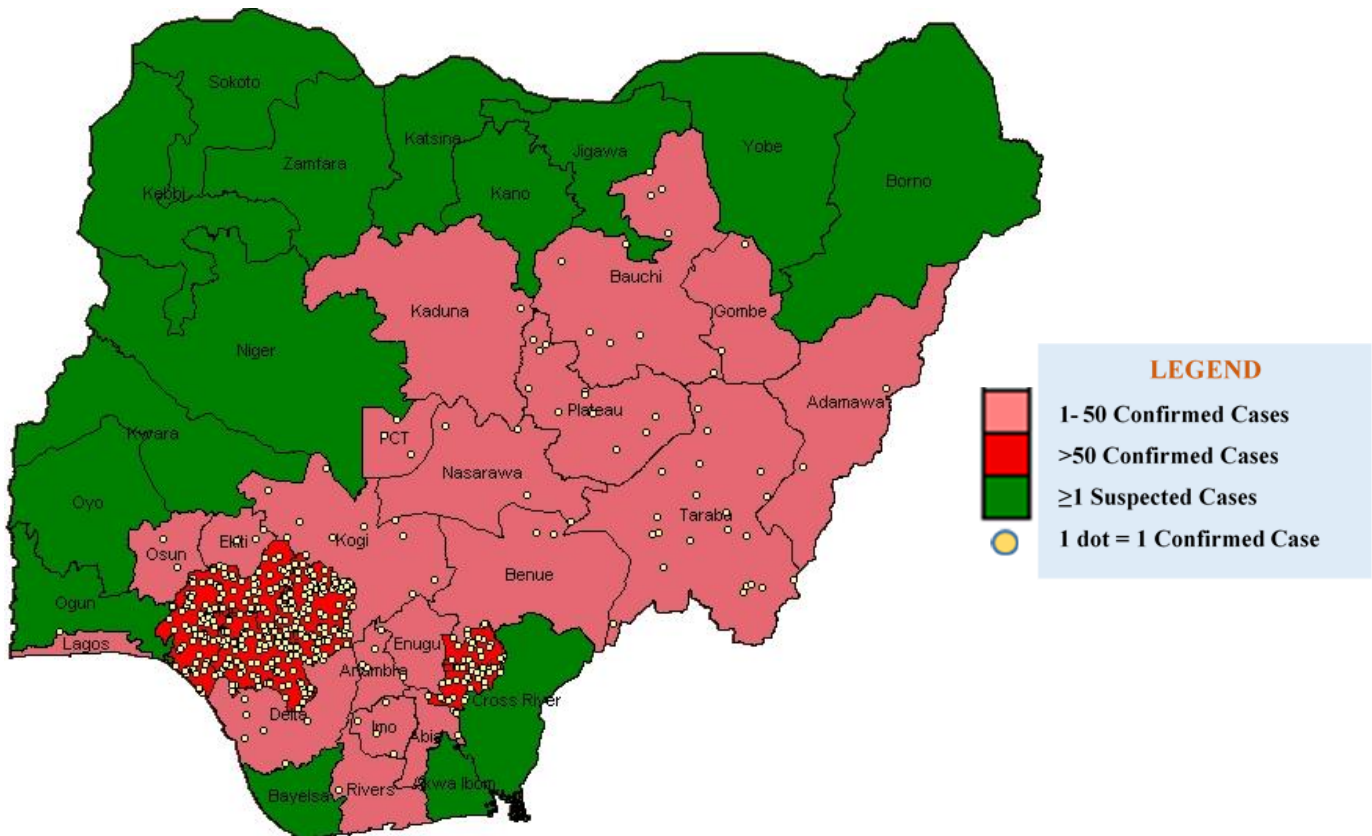


Figure 1. Distribution of Confirmed Lassa Fever cases in Nigeria as at 7<sup>th</sup> October, 2018

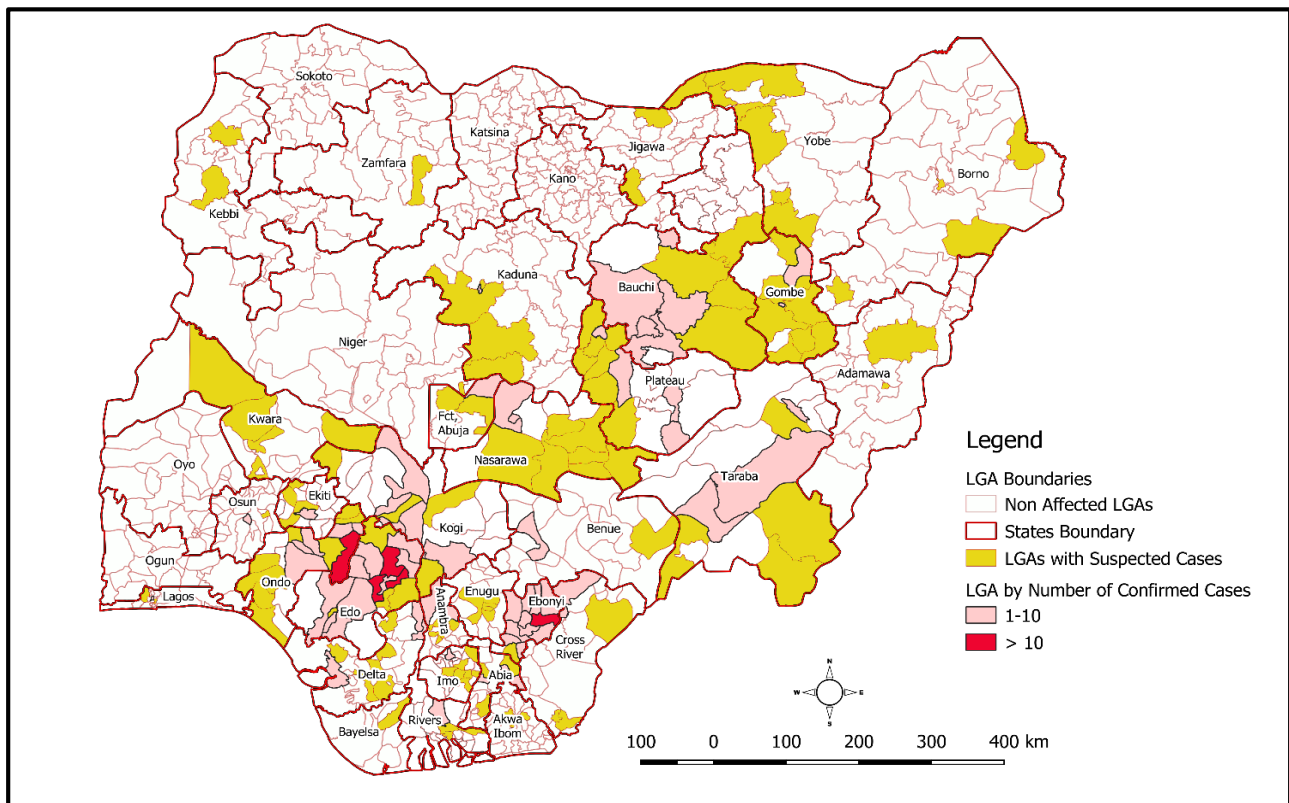


Figure 2. Distribution of Suspected and Confirmed Lassa Fever cases in Nigeria by LGA



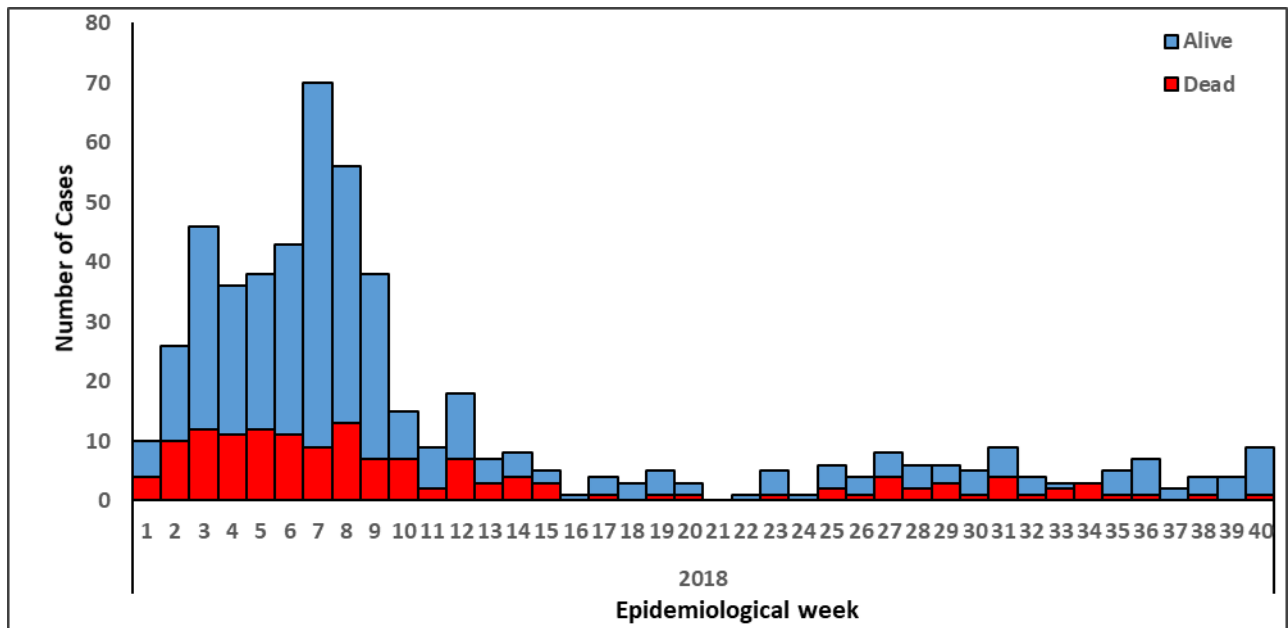


Figure 3. Epicurve of Lassa fever Confirmed (523) and Probable (15) Cases in Nigeria week 1- 40, 2018

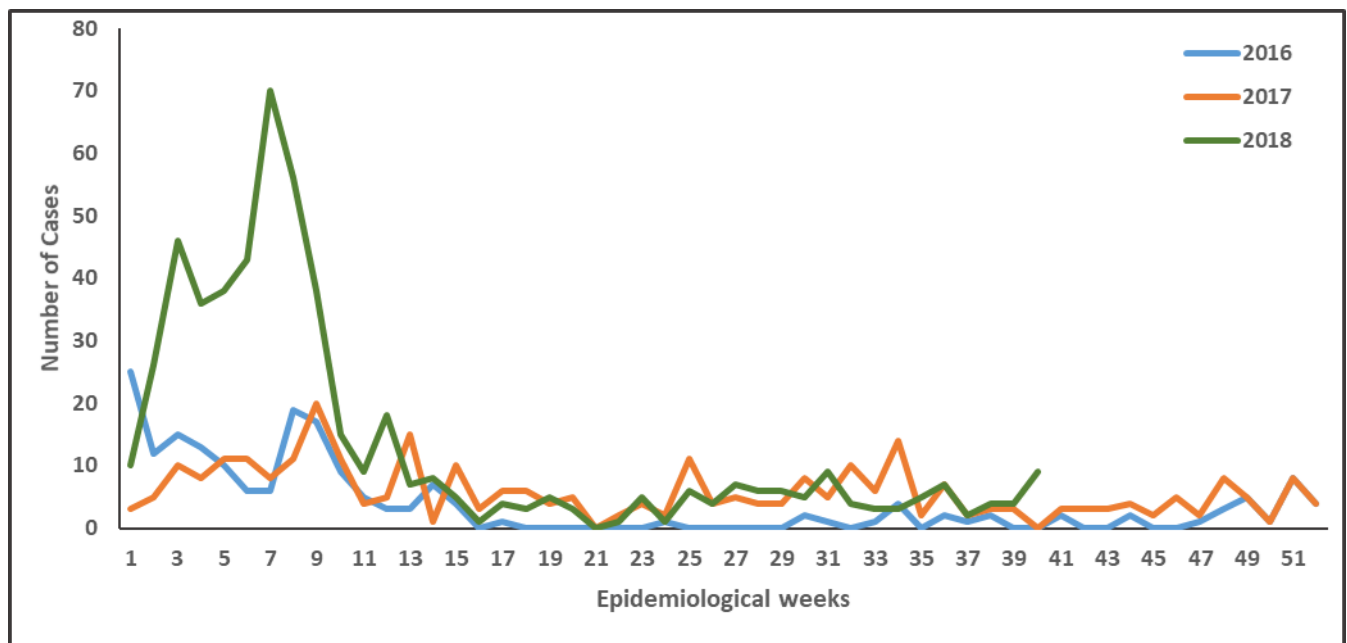
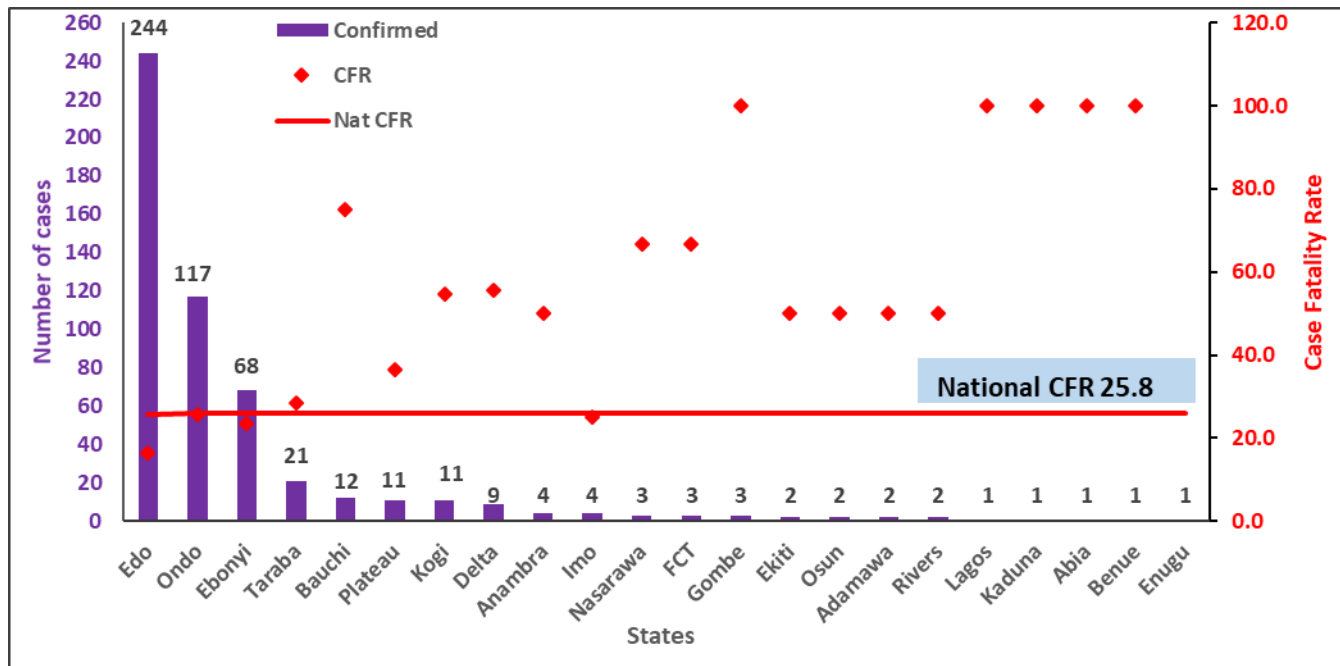


Figure 4. Weekly trends of Lassa fever Confirmed Cases in Nigeria, 2016-2018/40





**Figure 5. Confirmed Lassa fever cases in Nigeria with state specific Case Fatality Rates (CFR) as at 7<sup>th</sup> October, 2018**

<sup>i</sup>Suspected case describes any individual presenting with one or more of the following: malaise, fever, headache, sore throat, cough, nausea, vomiting, diarrhoea, myalgia, chest pain, hearing loss and either a. History of contact with excreta or urine of rodents b. History of contact with a probable or confirmed Lassa fever case within a period of 21 days of onset of symptoms OR Any person with inexplicable bleeding/hemorrhagia.

<sup>ii</sup>Any suspected case with laboratory confirmation (positive IgM antibody, PCR or virus isolation)

<sup>iii</sup>Any suspected case (see definition above) who died without collection of specimen for laboratory testing

<sup>iv</sup> "Active" means where there has been at least one confirmed case, and contacts within 21 days post exposure

**Disclaimer – The information contained in this document is confidential, privileged and only for the intended recipient and may not be used, published or redistributed to the public. A redacted version is available on <http://ncdc.gov.ng/diseases/sitreps>**