



SITUATION REPORT

Nigeria Centre For Disease Control and Prevention (NCDC)

NCDC.GOV.NG

PLOT 800 EBITU UKIWE STREET, JABI ABUJA, NIGERIA TOLL FREE CALL: 6232 E:info@ncdc.gov.ng

@NCDCgov   

TITLE:	UPDATE ON MONKEYPOX (MPX) IN NIGERIA
SERIAL NUMBER:	20
EPI-WEEK:	36
DATE:	September 11, 2022

Key Indicators	Number
Total confirmed cases in Epi Week 36, 2022	31
Total Suspected cases in Epi Week 36, 2022	65
Total suspected cases from January 1 st to September 11 th , 2022 (Epi week 1 to 36)	880
Total confirmed cases from January 1 st to September 11 th , 2022 (Epi week 1 to 36)	349
Total deaths from January 1 st to September 11 th , 2022 (Epi week 1 to 36)	7
Total deaths Sept 2017 - September 11 th , 2022	15
Total confirmed cases in 2017	88
Total confirmed cases in 2018	49
Total confirmed cases in 2019	47
Total confirmed cases in 2020	8
Total confirmed cases in 2021	34
Grand total confirmed cases (Sept 2017 – September 11 th , 2022)	575
Grand total suspected cases (Sept 2017 – September 11 th , 2022)	1392

Table 1 – Key Indicators

- **Thirty-one (31) new confirmed cases** were recorded from twelve (12) states – Lagos (13), Ogun (3), Akwa Ibom (2), Anambra (2), Borno (2), Kaduna (2), Rivers (1), Bayelsa (1), Delta (1), Katsina (1), Osun (1) and Taraba (1)
- From 1st January to 11th September 2022, Nigeria has recorded 349 confirmed cases (male 65%) from thirty (30) states
- Seven (7) associated deaths have been recorded from 7 states in 2022 – Delta (1), Lagos (1), Ondo (1) and Akwa Ibom (1), Kogi (1), Taraba (1) and Imo (1). **CFR 2.0%**
- Overall, since its re-emergence in September 2017, One thousand, three hundred & ninety two (1392) suspected cases have been reported from 35 states & the FCT. 41.3% of these suspected cases were positive for the disease.



- Fifteen (15) deaths have been recorded since its re-emergence (CFR= 2.6%) in eleven states - Lagos (3), Edo (2), Imo (2), Cross River (1), FCT (1), Rivers (1), Ondo (1) Delta (1), Akwa Ibom (1), Taraba (1) and Kogi (1).

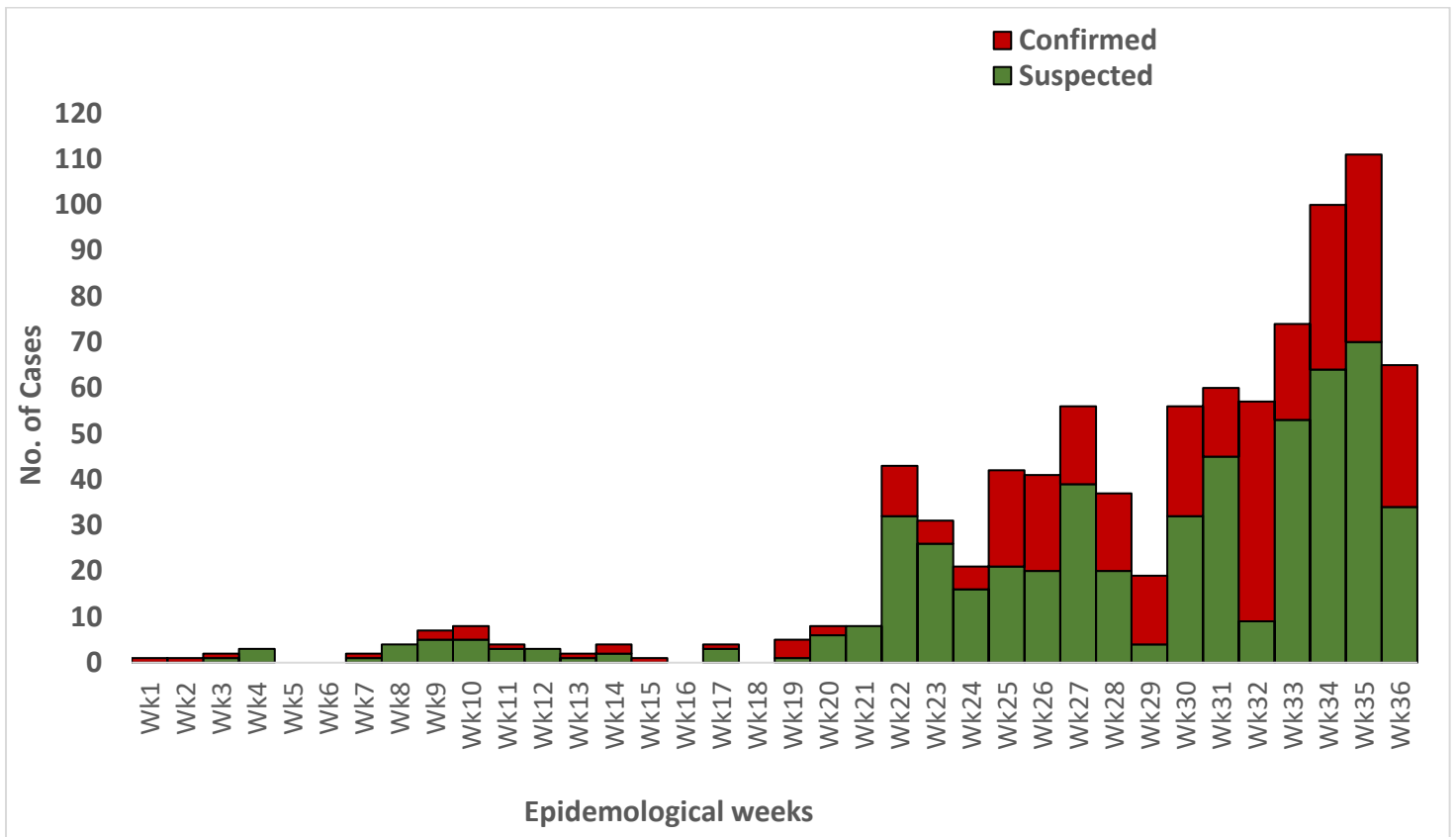


Figure 1: Epidemic Curve reported Monkey Pox (MPX) Cases from January 1st – September 11th 2022

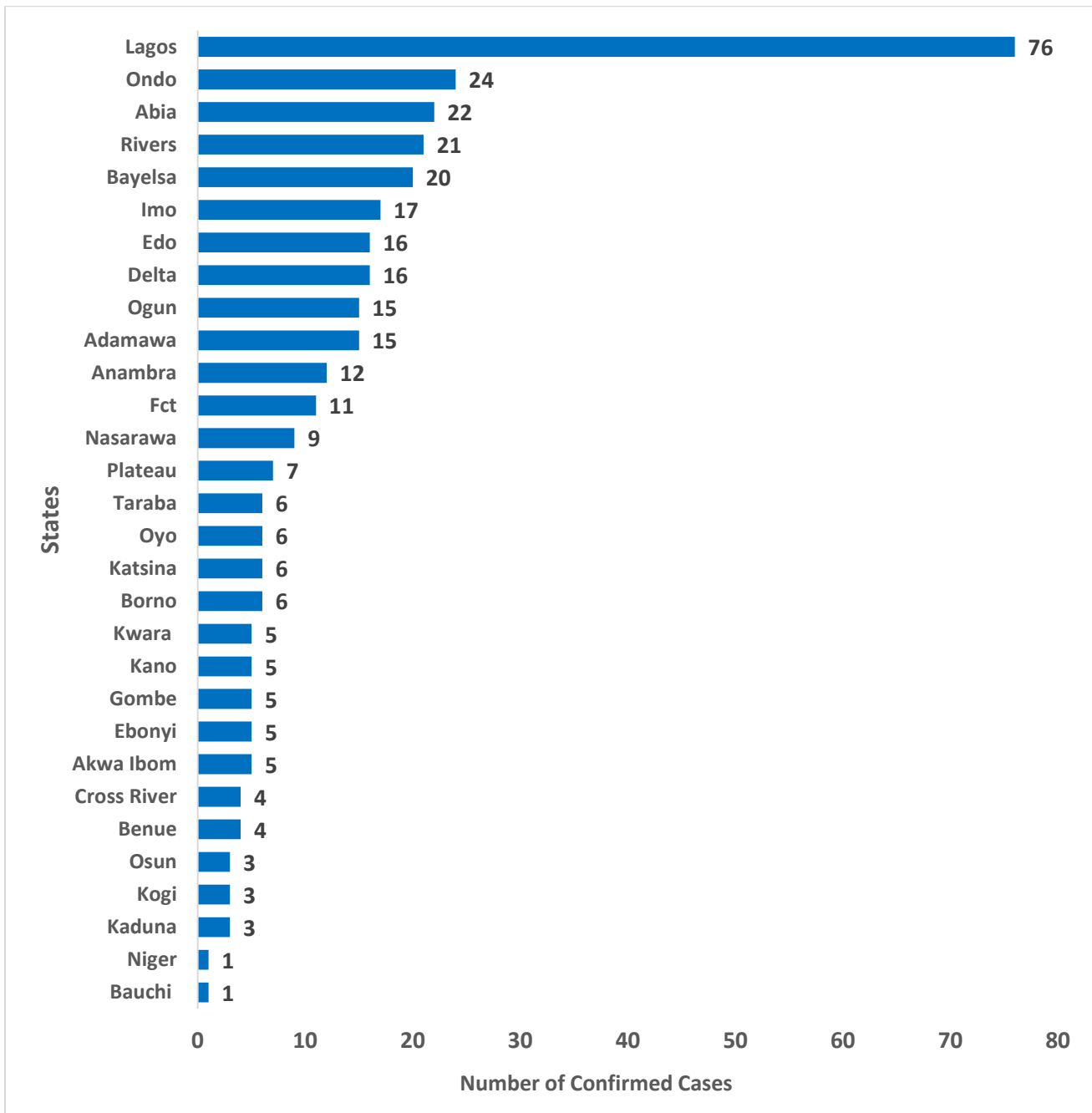


Figure 2: Bar chart Showing confirmed monkeypox cases by state from January 1st – September 11th 2022

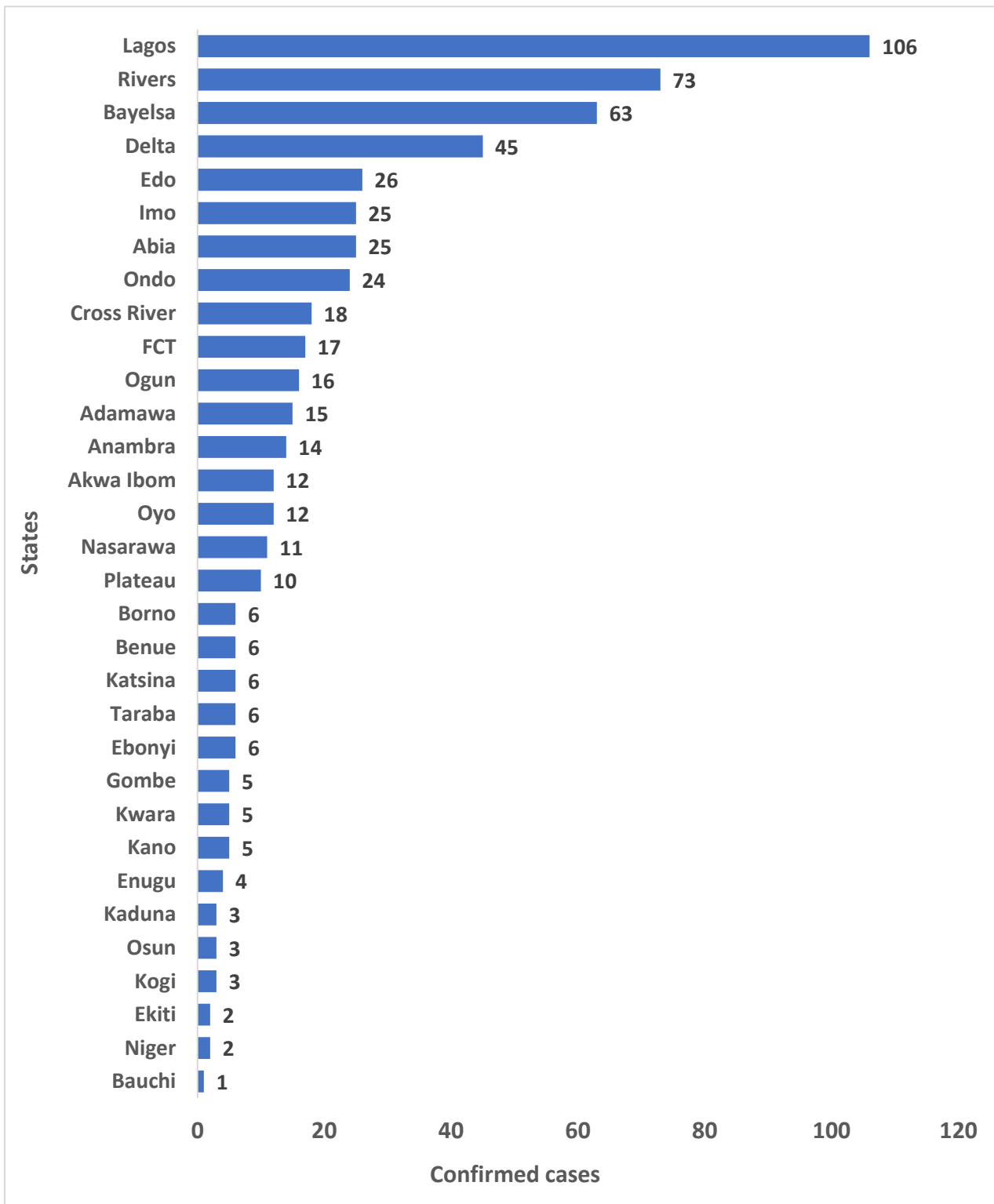


Figure 3: Bar chart Showing confirmed monkeypox cases by state, September 2017 – September 11th 2022

Table 2: Nigeria confirmed monkeypox cases by state, September 2017 – 11th September 2022

State	2017	2018	2019	2020	2021	2022	Total
Lagos	4	1	15	4	6	76	106
Rivers	25	14	7	1	5	21	73
Bayelsa	19	11	7	0	6	20	63
Delta	3	6	10	1	9	16	45
Edo	4	1	1	0	4	16	26
Abia	1	2	0	0	0	22	25
Imo	5	2	1	0	0	17	25
Ondo	0	0	0	0	0	24	24
Cross River	9	3	1	0	1	4	18
FCT	5	0	0	0	1	11	17
Ogun	0	0	0	0	1	15	16
Adamawa	0	0	0	0	0	15	15
Anambra	0	1	1	0	0	12	14
Oyo	1	3	2	0	0	6	12
Akwa Ibom	6	0	1	0	0	5	12
Nasarawa	1	1	0	0	0	9	11
Plateau	0	2	0	1	0	7	10
Ebonyi	0	0	0	1	0	5	6
Taraba	0	0	0	0	0	6	6
Katsina	0	0	0	0	0	6	6
Benue	2	0	0	0	0	4	6
Borno	0	0	0	0	0	6	6
Kano	0	0	0	0	0	5	5
Kwara	0	0	0	0	0	5	5
Gombe	0	0	0	0	0	5	5
Enugu	1	2	1	0	0	0	4
Kogi	0	0	0	0	0	3	3
Osun	0	0	0	0	0	3	3
Kaduna	0	0	0	0	0	3	3
Niger	0	0	0	0	1	1	2
Ekiti	2	0	0	0	0	0	2
Bauchi	0	0	0	0	0	1	1
Grand Total	88	49	47	8	34	349	575

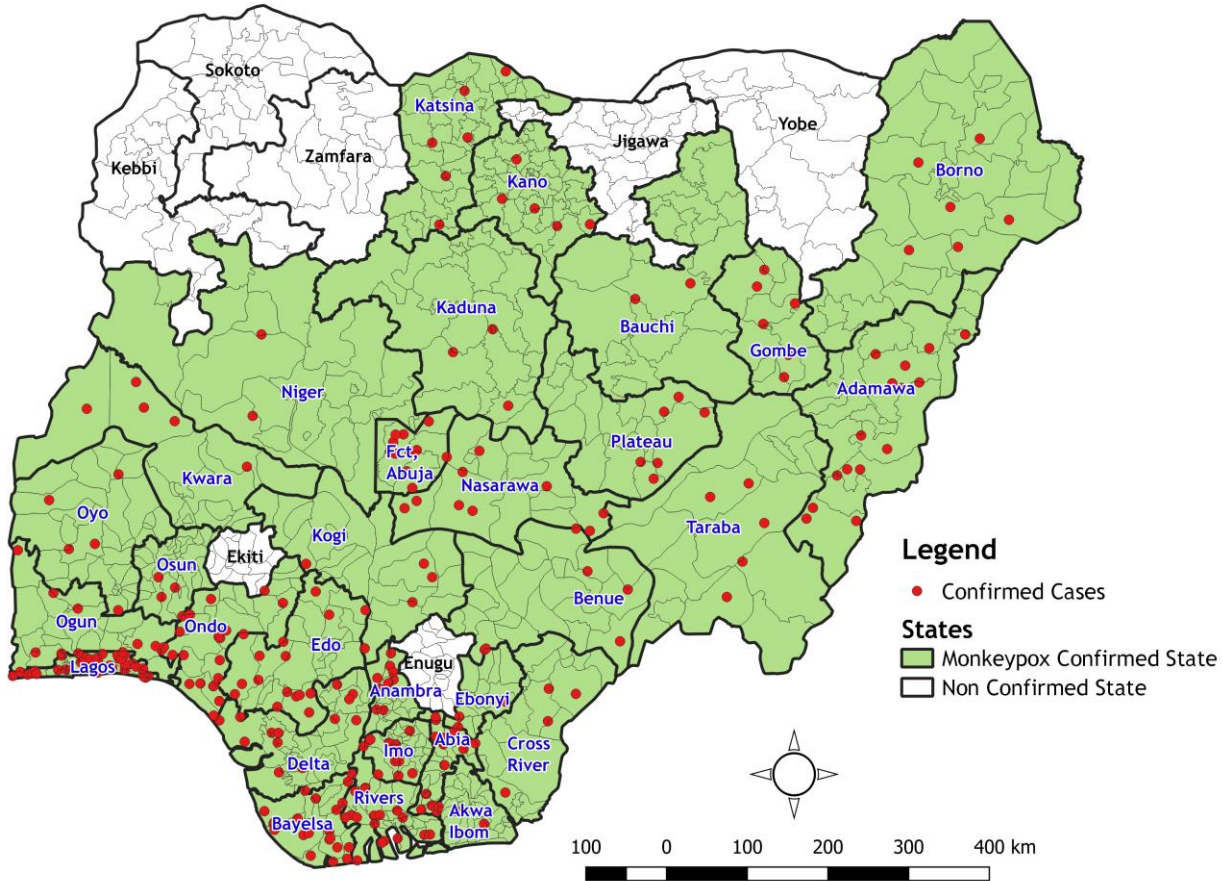


Figure 4: Map of Nigeria Showing States with Confirmed MPX Cases from January 2022 till date (30 states)

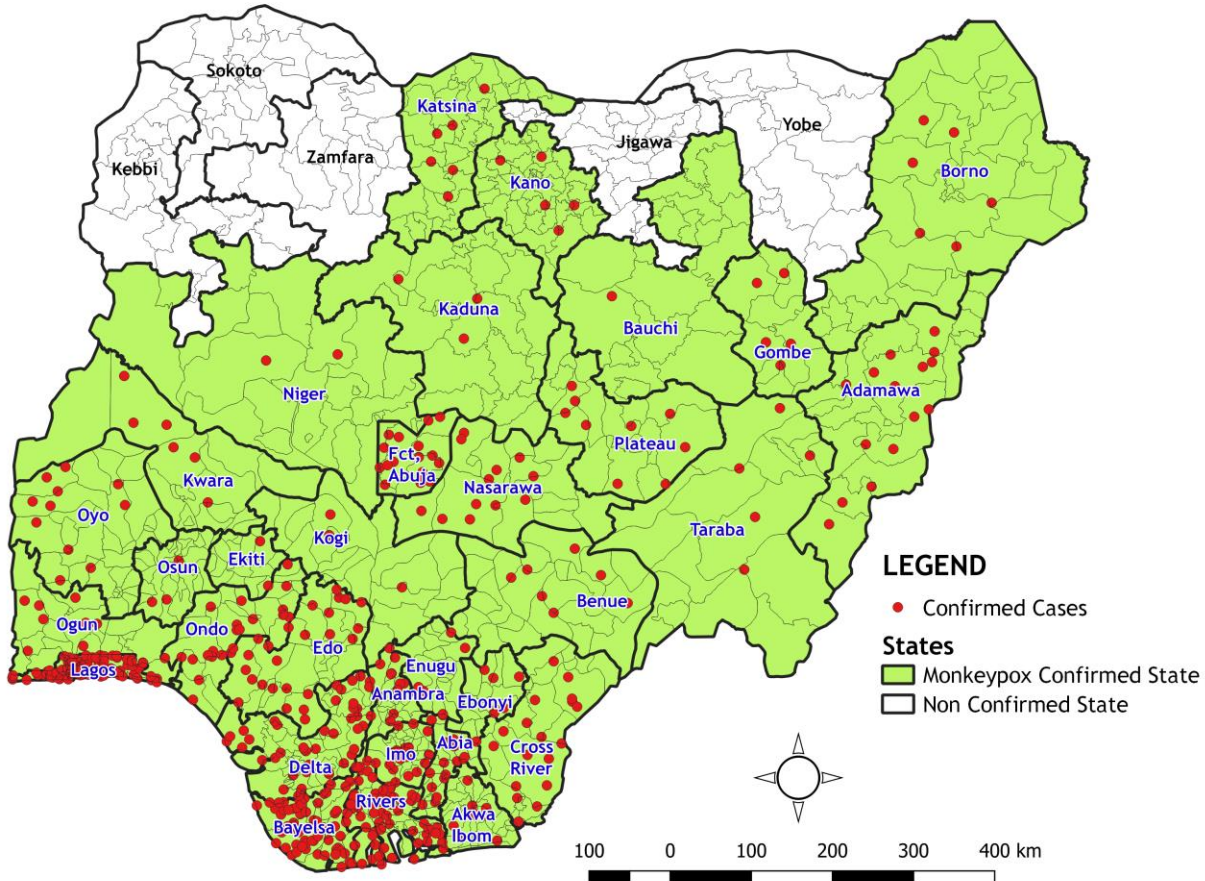


Figure 5: Map of Nigeria Showing States with Confirmed MPX Cases from September 2017 till date

Table 3: Age distribution of confirmed Monkeypox cases September 2017 – 11th September 2022

Age Group	2017	2018	2019	2020	2021	2022	Total
0-10 Years	7	5	1	0	1	51	65
11-20 Years	12	4	1	0	4	58	79
21-30 Years	34	13	13	4	10	82	156
31- 40 Years	26	17	22	4	13	108	190
41-50 Years	9	10	9	0	5	38	71
51-60 Years	0	0	1	0	1	12	14
Total	88	49	47	8	34	349	575

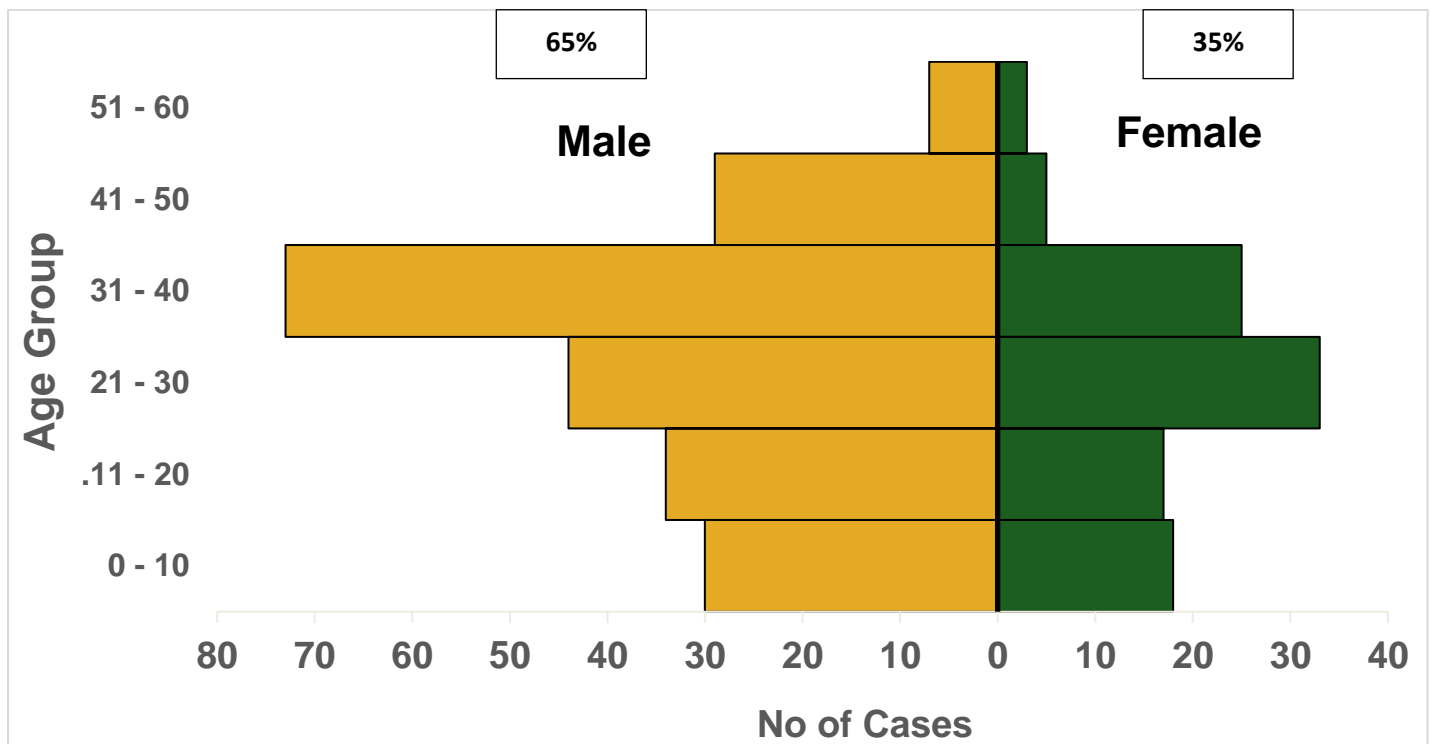


Figure 6: Age and sex distribution of confirmed monkeypox cases January 1st –September 11th 2022

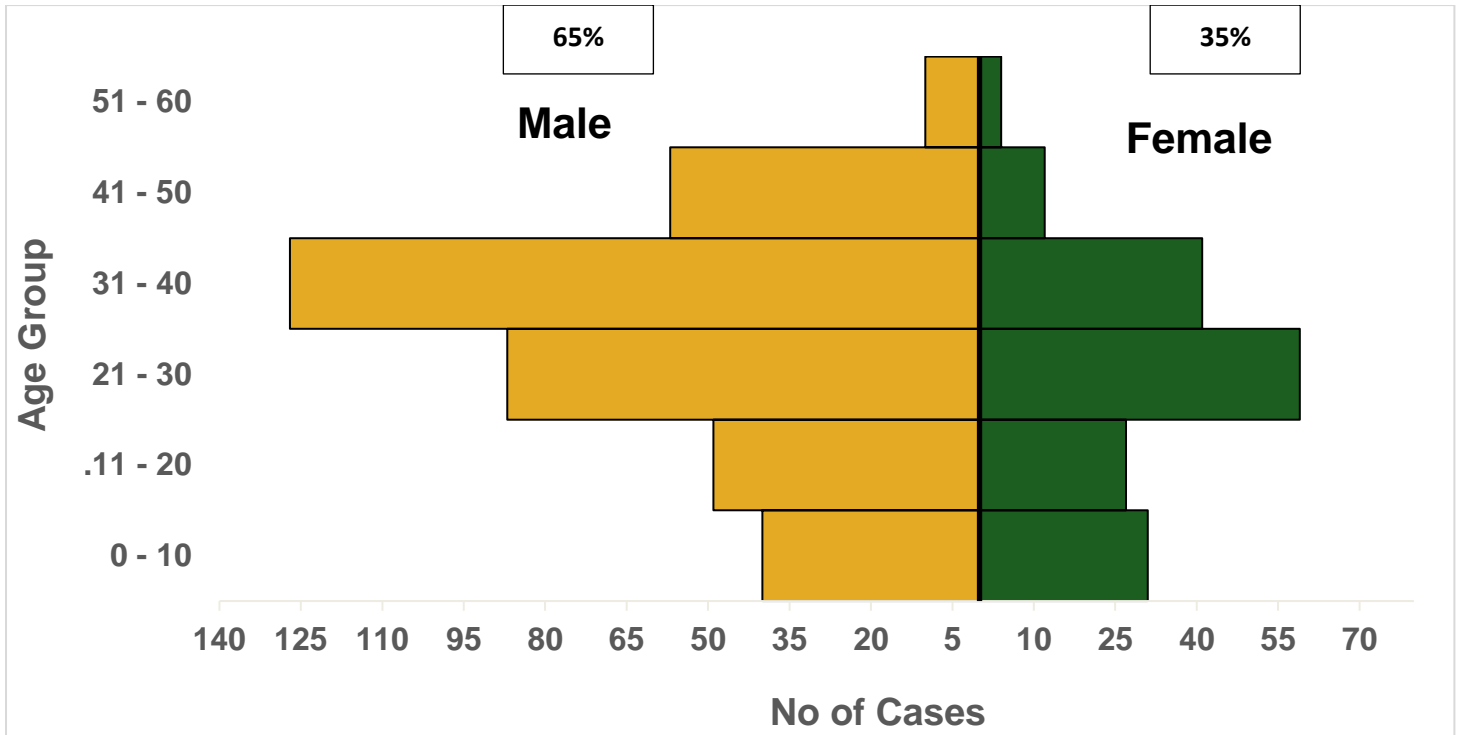


Figure 7: Age and sex distribution of confirmed monkeypox cases September 2017 – September 11th 2022

Notes on this report

Data Source

Information for this disease was case-based data retrieved from the National Monkeypox Emergency Operations Centre.

Calculations

- Case Fatality Rate (CFR) for this disease is reported for confirmed cases only

...PROTECTING THE HEALTH OF NIGERIANS

