



# CEREBROSPINAL MENINGITIS OUTBREAK IN NIGERIA

## Situation Report

(As at 24<sup>th</sup> April, 2017)

### Highlights

- An outbreak of cerebrospinal meningitis (CSM), which started in December 2016, is ongoing in Nigeria
- As at 22<sup>nd</sup> April, 2017, of the 9,646 suspected cases reported, 277 (2.9%) were laboratory confirmed, and 839 deaths (8.7%) recorded
- In the last four weeks (Epi-Week 12-16), 43 Local Government Areas (LGAs) have reached alert/epidemic threshold in seven States — Zamfara, Sokoto, Katsina, Kebbi, Niger, Yobe and Plateau
- Additional technical teams are still in affected States supporting coordination and other response activities
- Planned reactive vaccination campaign in Sokoto State by National Primary Health Care Development Agency (NPHCDA) will now commence on 27<sup>th</sup> April, 2017
- Additional commodities for laboratory diagnosis and treatment have been provided for the most affected States
- The Government of Nigeria has concluded plans to deploy 62 medical teams – 28 and 34 to Zamfara and Sokoto States, respectively. Each team shall comprise of a Medical Doctor, a Nurse, Laboratory Scientist and supported by Data Officers per LGA
- The Government of Nigeria continues to actively work with Global Health partners to facilitate increased vaccines, laboratory and other supplies procurement to assist with the ongoing response

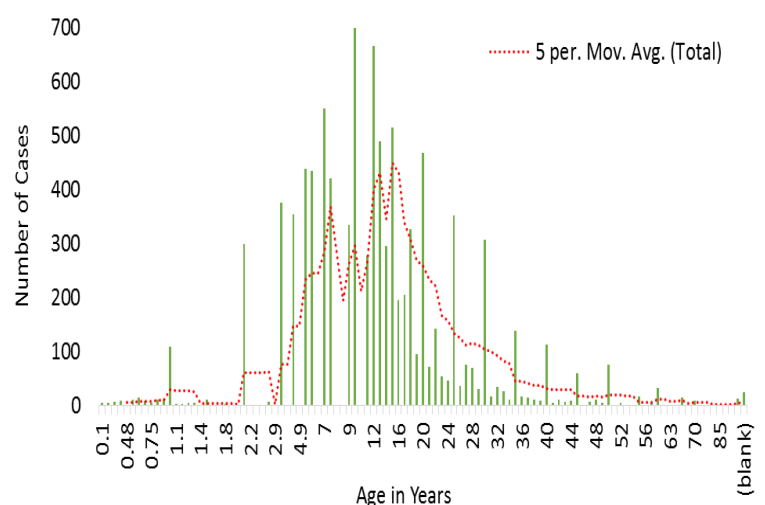
### Epi summary

- The first outbreak case occurred in Zamfara State during Epidemiology Week 50 (December 12– 18, 2016)
- A total of 9,646 cases with 839 deaths (CFR=8.7%) have been reported
- Of the reported cases, 566 (5.8%) were laboratory tested; of which 277 (48.9%) were confirmed positive for bacterial meningitis
- *Neisseria meningitidis* serotype C. was the commonest cause of meningitis amongst those who tested positive
- Majority of the suspected cases (48.2%) were in the 5-14 year age group
- In the six most affected States— Zamfara, Sokoto, Katsina, Yobe, Kebbi, and Niger— a total of 14 LGAs are currently within the alert threshold and are therefore currently under enhanced surveillance, while 29 LGAs have reached the epidemic threshold, with full outbreak investigation and control measures being implemented

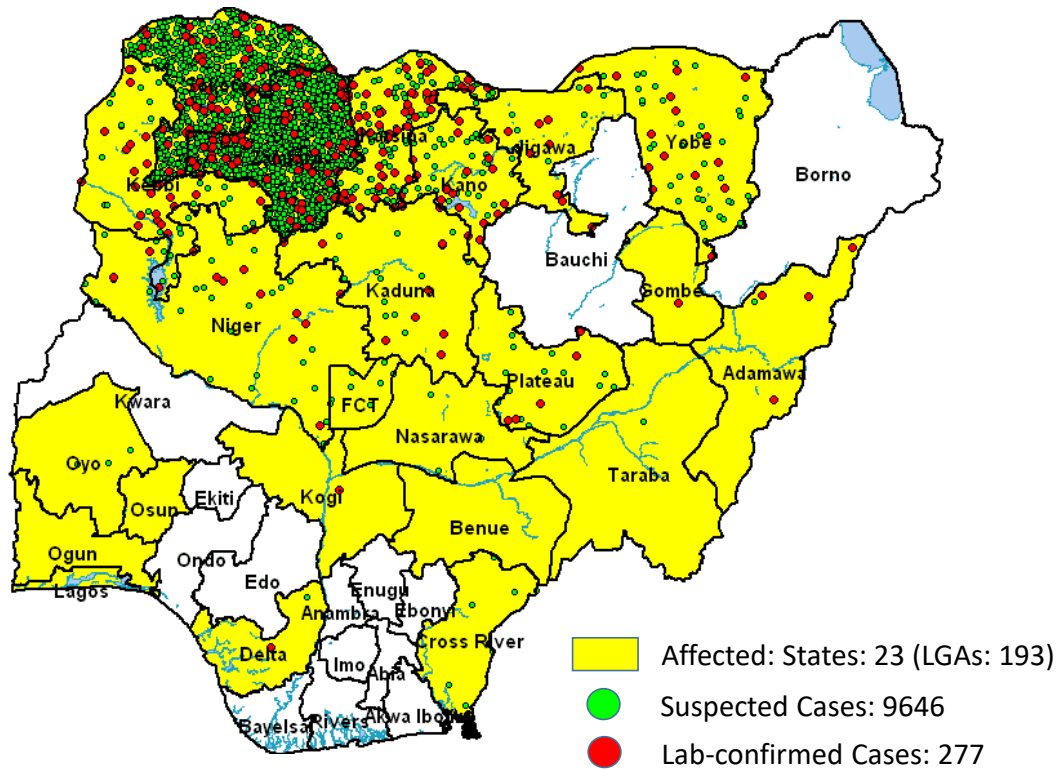
### Key Indicators

Key Indicators	Number
Total cases reported	9,646
Total Deaths	839
Confirmed cases	277
Total samples tested	566
States that have reported at least one suspected case	23
States with at least one LGA in Epidemic	5
Current LGAs in Alert threshold	14
Current LGAs in Epidemic threshold	29
Cumulative LGAs ever in Alert threshold	14
Cumulative LGAs ever in Epidemic threshold	32

Age distribution of CSM Cases as at 22 April 2017, Nigeria



## Distribution of CSM Outbreak in Nigeria, as at 22<sup>nd</sup> April, 2017



## LGAs that Crossed Alert/Epidemic Threshold, as at 22<sup>nd</sup> April, 2017

