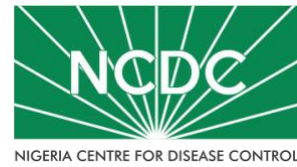


# COVID-19 SITUATION REPORT

## SITUATION REPORT 178

Monday, 24th August 2020



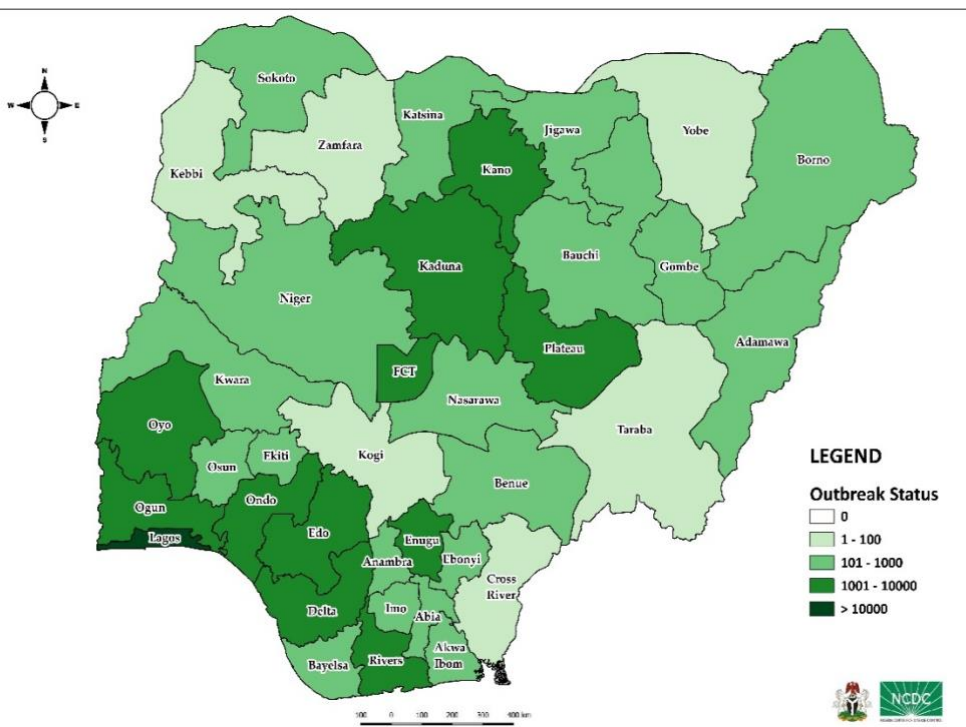
DATA AS REPORTED AND ACCURATE BY NCDC AS AT MIDNIGHT 24<sup>TH</sup> AUGUST 2020

### HIGHLIGHTS

- Three hundred and twenty-one (**321**) confirmed cases were reported in the last 24 hours from **24** states – Lagos (98), FCT (34), Kaduna (30), Nasarawa (25), Benue (21), Plateau (17), Rivers (15), Adamawa (11), Ogun (11), Enugu (9), Edo (8), Delta (7), Ekiti (7), Gombe (5), Ebonyi (4), Bayelsa (3), Kano (3), Ondo (3), Cross River (2), Imo (2), Kebbi (2), Niger (2), Abia (1) and Bauchi (1).
- Three hundred and twelve (**312**) discharges have been reported in the last 24 hours in **15** states – Kaduna (69), Kwara (56), Plateau (49), Ogun (33), Nasarawa (26), Delta (21), Rivers (15), Ekiti (12), Edo (10), Imo (7), Osun (6), Cross River (4), Benue (2), Bayelsa (1) and FCT (1).
- Two (**2**) deaths were reported in the last 24 hours in **one** state – Oyo (2).
- All **36** states in Nigeria, and the FCT, have reported a confirmed case.

### STATE OF THE NATION

Figure 1: Map of Nigeria showing 36 states and FCT affected by COVID-19



### SITUATION UPDATES

Total (New in the last 24 hours)

SAMPLES TESTED

**383,130 (3,588)**

CONFIRMED CASES

**52,548 (321)**

AFFECTED STATES INCLUDING FCT

**37**

DISCHARGED CASES

**39,527 (312)**

CONFIRMED FATALITIES

**1,004 (2) – 1.9% CFR**

DEMOGRAPHICS

MALE – 33,510 (64%)

FEMALE – 19,038 (36%)

MOST AFFECTED AGE GROUP

31 - 40 (25%)

PERSONS OF INTEREST

**11,622 (Total)**

**11,472 (98.7% - Exceeded Follow Up)**

PROVENANCE

TRAVEL HISTORY – 850 (2%)

CONTACTS – 12,543 (24%)

UNKNOWN EXPOSURE – 39,155 (74%)

GLOBAL UPDATES

TOTAL NUMBER OF CASES

**23,311,719 (806,410 deaths)**

COUNTRIES & TERRITORIES AFFECTED\*

**216**

\*Excluding the 2 International Conveyance

## GENERAL FACT SHEET – DATA AS AT 24<sup>TH</sup> AUGUST 2020

Table 1: States with reported laboratory-confirmed COVID-19 cases, recoveries, deaths and days since last reported case

STATES	CONFIRMED CASES		DISCHARGED CASES		DEATHS		TOTAL ACTIVE CASES	DAYS SINCE LAST REPORTED CASE
	TOTAL	NEW	TOTAL	NEW	TOTAL	NEW		
Lagos	17,992	98	15,209	0	202	0	2,581	0
FCT	5,028	34	1,448	1	46	0	3,534	0
Oyo	3,050	0	1,682	0	37	2	1,331	1
Edo	2,545	8	2,244	10	100	0	201	0
Plateau	2,135	17	1,149	49	29	0	957	0
Rivers	2,063	15	1,897	15	57	0	109	0
Kaduna	2,041	30	1,826	69	12	0	203	0
Kano	1,711	3	1,463	0	54	0	194	0
Delta	1,708	7	1,518	21	46	0	144	0
Ogun	1,625	11	1,443	33	26	0	156	0
Ondo	1,515	3	777	0	31	0	707	0
Enugu	1,052	9	852	0	21	0	179	0
Ebonyi	964	4	913	0	27	0	24	0
Kwara	936	0	740	56	25	0	171	1
Katsina	771	0	457	0	24	0	290	2
Osun	768	0	640	6	16	0	112	1
Abia	750	1	643	0	7	0	100	0
Borno	740	0	646	0	36	0	58	1
Gombe	714	5	605	0	23	0	86	0
Bauchi	644	1	545	0	14	0	85	0
Imo	523	2	187	7	10	0	326	0
Benue	451	21	141	2	9	0	301	0
Nasarawa	421	25	298	26	12	0	111	0
Bayelsa	373	3	326	1	21	0	26	0
Jigawa	322	0	308	0	11	0	3	39
Akwa Ibom	271	0	220	0	8	0	43	5
Niger	239	2	168	0	12	0	59	0
Ekiti	225	7	122	12	4	0	99	0
Adamawa	217	11	159	0	15	0	43	0
Anambra	194	0	159	0	18	0	17	1
Sokoto	158	0	138	0	16	0	4	1
Kebbi	92	2	82	0	8	0	2	0
Cross River	82	2	63	4	8	0	11	0
Taraba	78	0	55	0	4	0	19	13
Zamfara	78	0	72	0	5	0	1	4
Yobe	67	0	59	0	8	0	0	25
Kogi	5	0	3	0	2	0	0	52
<b>Total</b>	<b>52,548</b>	<b>321</b>	<b>39,257</b>	<b>312</b>	<b>1004</b>	<b>2</b>	<b>12,287</b>	

States, including FCT, are arranged in descending order by number of total confirmed cases and then alphabetical order

## SELECTED CHARTS

Figure 2: Daily Epidemic Curve of Confirmed Cases (WK9 – WK35)

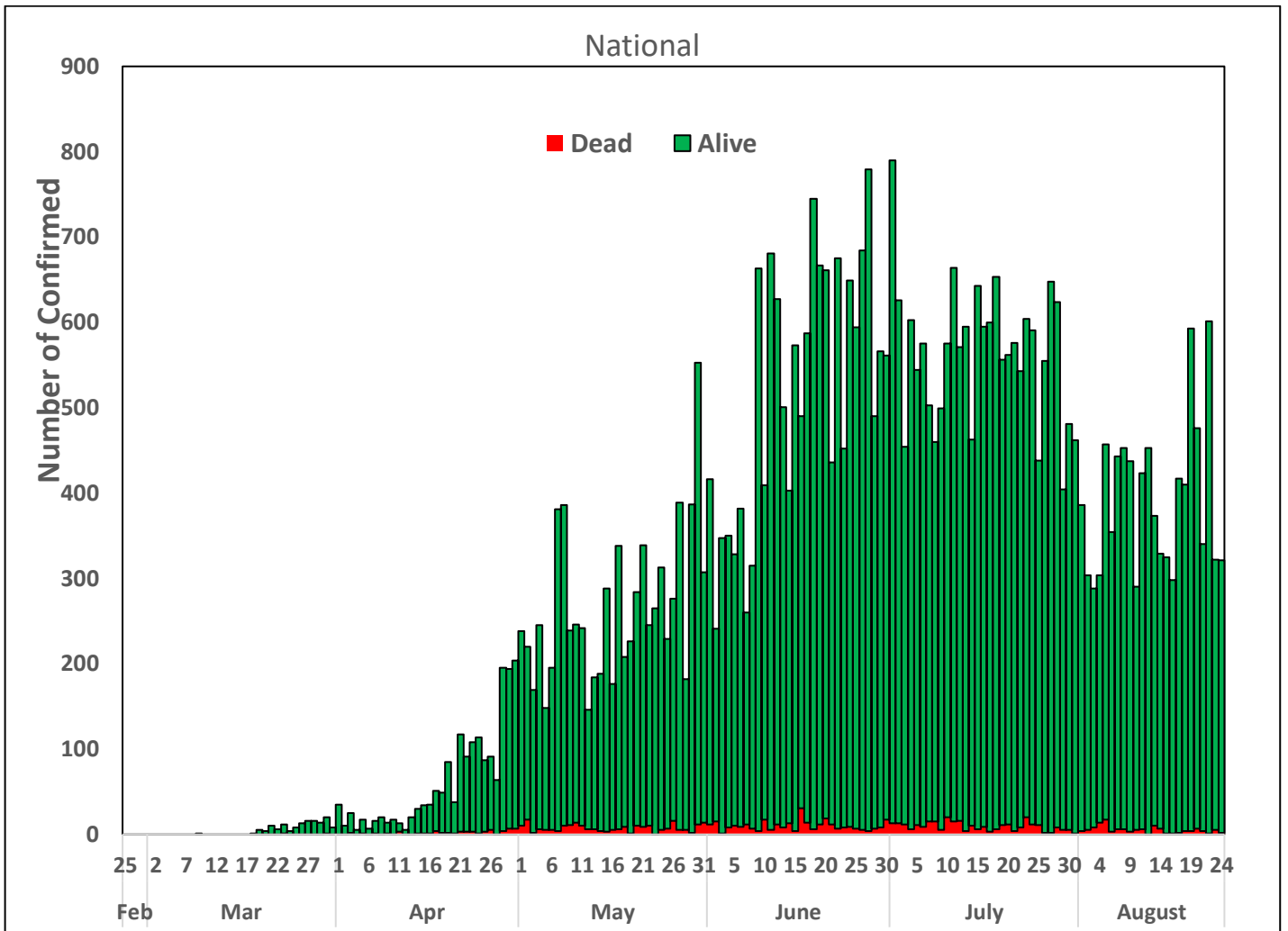
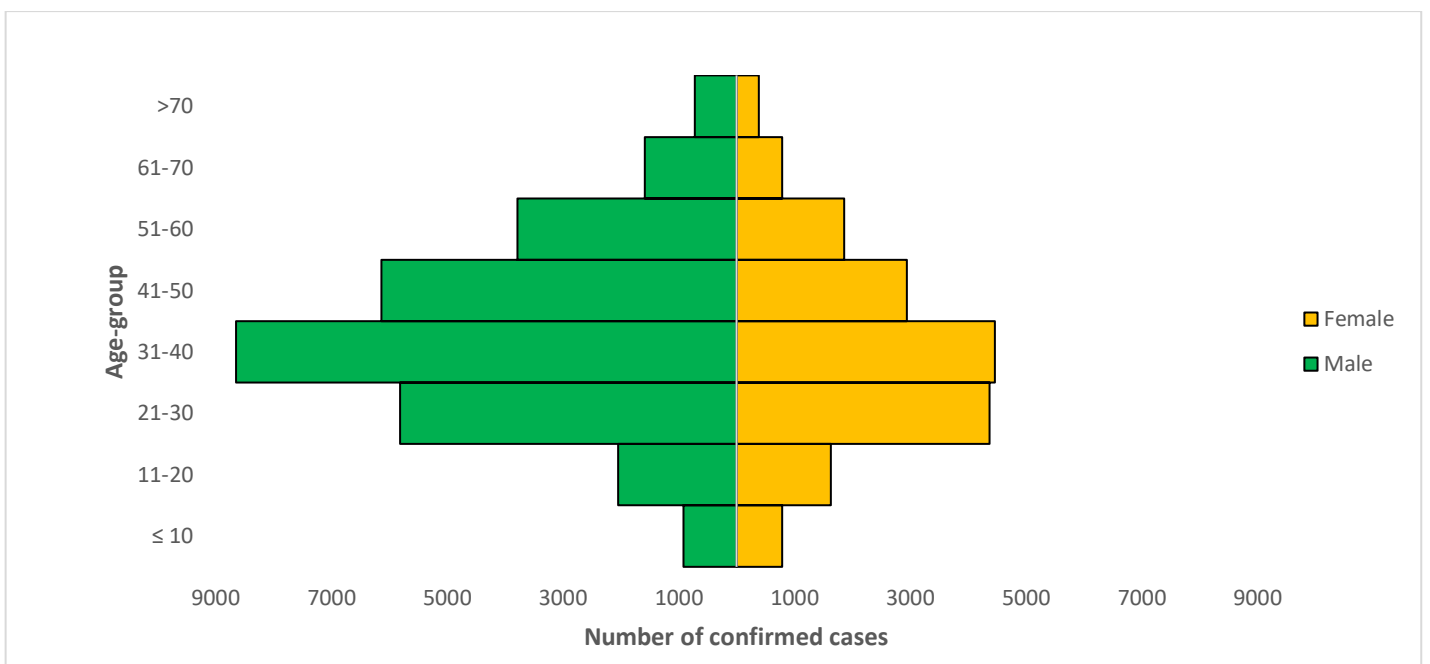


Figure 3: Age-Sex Distribution of Confirmed Cases (WK9 – WK35)



## PREPAREDNESS

Since the confirmation of the first case on 27<sup>th</sup> February 2020, the NCDC has released advisories and statements to help Nigerians and affected groups in particular to respond to the pandemic

- NCDC recently published the first edition of a quick reference guide on setting up sample collection centre - [A step by step guide on setting up a sample collection centre](#)
- NCDC has launched an online course on [Infection, Prevention and Control \(IPC\) for COVID-19](#) NCDC eLearning platform
- Ahead of forthcoming elections in the country, NCDC has issued [Guidelines for Conducting Elections During the COVID-19 Outbreak in Nigeria](#).
- To protect our elders, and those with pre-existing medical conditions, NCDC has issued an [Advisory for Vulnerable Groups](#).
- NCDC has released [guidelines on the re-opening of places for worship](#).
- NCDC has released [Strategies to Improve Surveillance for COVID-19 Guidance for States](#)
- The Nigeria Police Force has released COVID-19 operational guidelines for the [Police and other Law Enforcement Agencies](#) in Nigeria
- Guidelines have been issued for the [safe transportation of remains of persons suspected or confirmed to have died of COVID-19](#)
- Information on diagnostics of the COVID-19 virus can be found in our [detailed FAQ document](#).
- To increase our testing capacity, NCDC has issued guidelines for the [integration of private labs](#).
- Guidelines for [businesses and employers](#) have been updated.
- NCDC has updated its [case definition](#) , [community case definition](#) and [case management guide](#).
- NCDC releases periodic [public health advisories](#) to Nigerians on the COVID-19 disease.
- To adhere to post-lockdown measures, NCDC has released an [advisory on the use of face masks](#), as well as information on the [Use of Cloth face masks](#) and [how to make your cloth face masks](#).
- NCDC has released guidelines for the [management of pregnant women and nursing mothers](#) during the pandemic.
- To address burials of loved ones who die from COVID-19, guidelines have been issued to advise on the [management of dead bodies](#).
- For health centres managing cases, the following documents have been released- a guideline for the [Rational Use of Personal Protective Equipment in the care of COVID-19 cases](#).
- As part of plans to increase the testing capacity of the country, the NCDC published a [National Strategy to Scale Up Access to Coronavirus Disease Testing in Nigeria](#) document.
- The Presidential Task Force has published policies and announcements on COVID-19 [available on the website of the Presidency](#) – including presidential addresses, task force updates and information on livelihood and economic support.

## RESPONSE

On 28<sup>th</sup> February 2020, a multi-sectoral Emergency Operations Centre (EOC) was activated at Level 3 – the highest emergency level in Nigeria –led by NCDC in close coordination with the State Public Health EOCs (PHEOC).

- **Ongoing support to states to organise trainings for health facilities in Local Government Areas on sample collection and active case finding**
- **Ongoing optimisation of a new state molecular laboratory in Yenagoa, Bayelsa State**
- **Held a virtual strategic meeting with State focal persons on Incident Action Plan and Infection Prevention Control (IPC) activities to be prioritised for quality implementation of hotspot strategy**
- Continued tracking and collation of data from sitreps shared by States
- Reviewed and updated guidelines for SARS-CoV-2 specimen packaging and transportation
- Conducted IPC training for Ambulance drivers and operational vehicles drivers including members of the road transport workers in Gombe State
- Processed and delivered Emergency order from state and Laboratories in the network

- Commenced the implementation of the "prospective cohort study of COVID-19 cases and their close contacts" in Delta state
- Development of tools for tracking stakeholders' activities is ongoing
- All education materials can be found via [www.covid19.ncdc.gov.ng](http://www.covid19.ncdc.gov.ng)