

YELLOW FEVER SITUATION REPORT



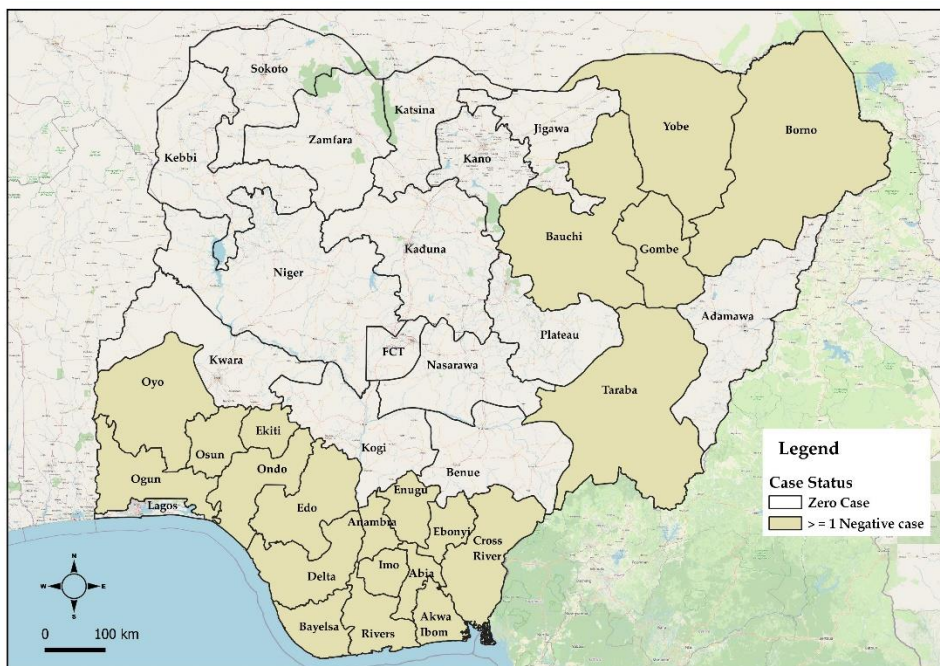
Serial Number: 004	April 2022 Monthly Sitrep
Epi Week:	13 to 17 as at 30 th April 2022
Reporting Month:	April, 2022

REPORTING MONTH: APRIL 2022

HIGHLIGHTS

REPORTING PERIOD: 1ST – 30TH APRIL 2022

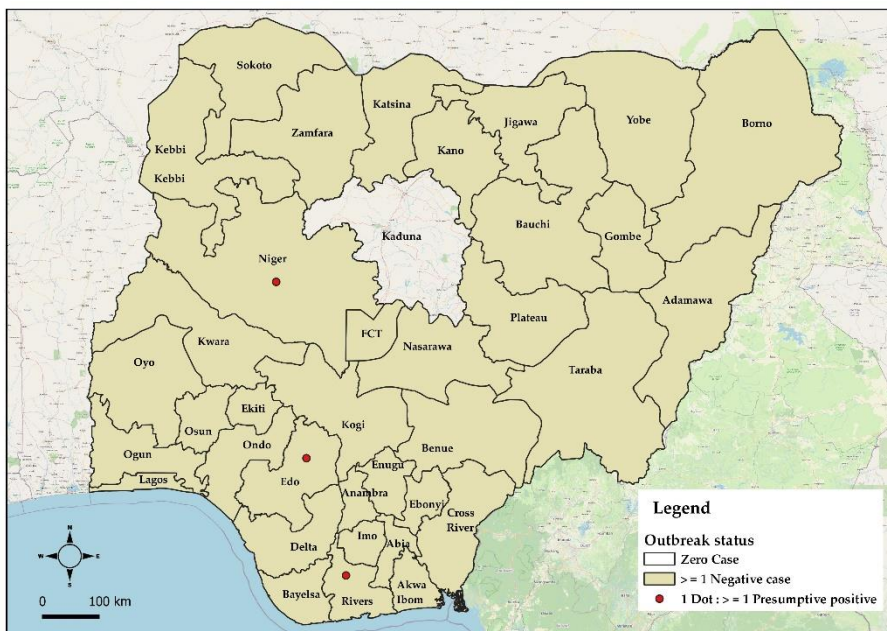
- The Nigeria Centre for Disease Control (NCDC) continues to monitor reports of yellow fever cases in Nigeria.
- A total of 145 suspected cases were reported from 83 Local Government Areas (LGAs) across 21 states: Abia (5), Akwa Ibom (1), Anambra (9), Bauchi (7), Bayelsa (6), Borno (27), Cross River (3), Delta (1), Ebonyi (4), Edo (5), Ekiti (6), Enugu (11), Gombe (8), Imo (6), Ogun (2), Ondo (18), Osun (2), Oyo (10) Rivers (7), Taraba (2), Yobe (5)
- One (1) presumptive positive result was recorded from; University of Benin Teaching Hospital (UBTH) Benin (1). The case was reported from Rivers State
- No confirmed case from both the National Reference Laboratory (NRL) Gaduwa Abuja, and Institut Pasteur (IP) Dakar within the reporting period
- No death was recorded among suspected cases within the reporting period



145 SUSPECTED CASES	21 STATES WITH SUSPECTED CASES
0 CONFIRMED CASES	0 STATES WITH CONFIRMED CASES
0 DEATHS IN CONFIRMED CASES	0 STATES WITH DEATHS IN CONFIRMED CASES

CUMMULATIVE FOR 1st JANUARY 2021 – 31st APRIL 2022

- Cumulatively from 1st January 2022 – 30th April 2022 a total of 625 suspected cases have been reported from 36 states in 288 LGAs
- The suspected cases were reported from the following states: Abia (19), Adamawa (4), Akwa Ibom (3), Anambra (46), Bauchi (21), Bayelsa (6), Benue (11), Borno (48), Cross River (3), Delta (2), Ebonyi (21), Edo (8), Ekiti (11), Enugu (33), FCT (2), Gombe (9), Imo (24), Jigawa (47), Kano (4), Katsina (45), Kebbi (16), Kogi (10), Kwara (6), Lagos (4), Nasarawa (14), Niger (22), Ogun (12), Ondo (37), Osun (8), Oyo (40), Plateau (20), Rivers (10), Sokoto (13), Taraba (21), Yobe (18), Zamfara (7).
- Suspected cases were reported from 288 LGAs across 36 states and FCT. See Table (1)
- Total of 3 presumptive positive cases were recorded from the Nigeria Laboratories
- Presumptive positives were recorded from UBTH Benin (2) and MDH Abuja (1). The cases were reported from: **Edo -1** (Egor). **Niger -1** (Suleja). **Rivers-1** (Port-Harcourt). These samples have been shipped to IP Dakar for confirmation
- No confirmed case from both the NRL and IP Dakar from January to April 2022
- Two deaths recorded from suspected cases in Katsina (1) and Benue (1); **[CFR = 0.3%]**.
- Male to female ratio was **1.1:1** with males 331 (53.0%) and females 294 (47.0%)
- Seventy-five (75%) percent of cases were predominantly aged 30 years and below
- Fifty-seven (9.1%) of suspected cases had at least one dose of yellow fever vaccine
- The NCDC is coordinating response activities through the National Multi-agency Yellow Fever Technical Working Group (YF TWG)



625
SUSPECTED
CASES

36
STATES WITH
SUSPECTED
CASES

0
CONFIRMED
CASES

0
STATES WITH
CONFIRMED
CASES

0
DEATHS IN
CONFIRMED
CASES

0
STATES WITH
DEATHS IN
CONFIRMED
CASES

Table 1: Summary of yellow fever cases in Nigeria from January - April 2022

State	# Suspected Cases	# LGAs with suspected cases	# LGAs with confirmed cases	Laboratory Results					Deaths	
				Samples positive (IgM) & Inconclusive in NG)	LGAs with positive (IgM) & Inconclusive in NG)	Confirmed Cases (PCR)	Confirmed Cases (IP Dakar)	Total Confirmed Cases	# Deaths among Confirmed Cases [CFR] (%)	# Deaths among All Cases [CFR](%)
Abia	19	12	-	-	-	-	-	-	-	-
Adamawa	4	4	-	-	-	-	-	-	-	-
Akwa Ibom	3	3	-	-	-	-	-	-	-	-
Anambra	46	16	-	-	-	-	-	-	-	-
Bauchi	21	8	-	-	-	-	-	-	-	-
Bayelsa	6	3	-	-	-	-	-	-	-	-
Benue	11	7	-	-	-	-	-	-	-	1
Borno	48	15	-	-	-	-	-	-	-	-
Cross River	3	2	-	-	-	-	-	-	-	-
Delta	2	2	-	-	-	-	-	-	-	-
Ebonyi	21	11	-	-	-	-	-	-	-	-
Edo	8	7	-	1	1	-	-	-	-	-
Ekiti	11	7	-	-	-	-	-	-	-	-
Enugu	33	12	-	-	-	-	-	-	-	-
FCT Abuja	2	2	-	-	-	-	-	-	-	-
Gombe	9	5	-	-	-	-	-	-	-	-
Imo	24	11	-	-	-	-	-	-	-	-
Jigawa	47	9	-	-	-	-	-	-	-	-
Kaduna	0	0	-	-	-	-	-	-	-	-
Kano	4	3	-	-	-	-	-	-	-	-
Katsina	45	21	-	-	-	-	-	-	-	1
Kebbi	16	8	-	-	-	-	-	-	-	-
Kogi	10	7	-	-	-	-	-	-	-	-
Kwara	6	5	-	-	-	-	-	-	-	-
Lagos	4	3	-	-	-	-	-	-	-	-
Nasarawa	14	5	-	-	-	-	-	-	-	-
Niger	22	9	-	1	1	-	-	-	-	-
Ogun	12	7	-	-	-	-	-	-	-	-
Ondo	37	10	-	-	-	-	-	-	-	-
Osun	8	6	-	-	-	-	-	-	-	-
Oyo	40	18	-	-	-	-	-	-	-	-
Plateau	20	9	-	-	-	-	-	-	-	-
Rivers	10	9	-	1	1	-	-	-	-	-
Sokoto	13	6	-	-	-	-	-	-	-	-
Taraba	21	11	-	-	-	-	-	-	-	-
Yobe	18	9	-	-	-	-	-	-	-	-
Zamfara	7	6	-	-	-	-	-	-	-	-
TOTAL	625	288 (37%)	0	3 (0.5%)	3 (0.3%)	0	0	0	0	2(0.3%)

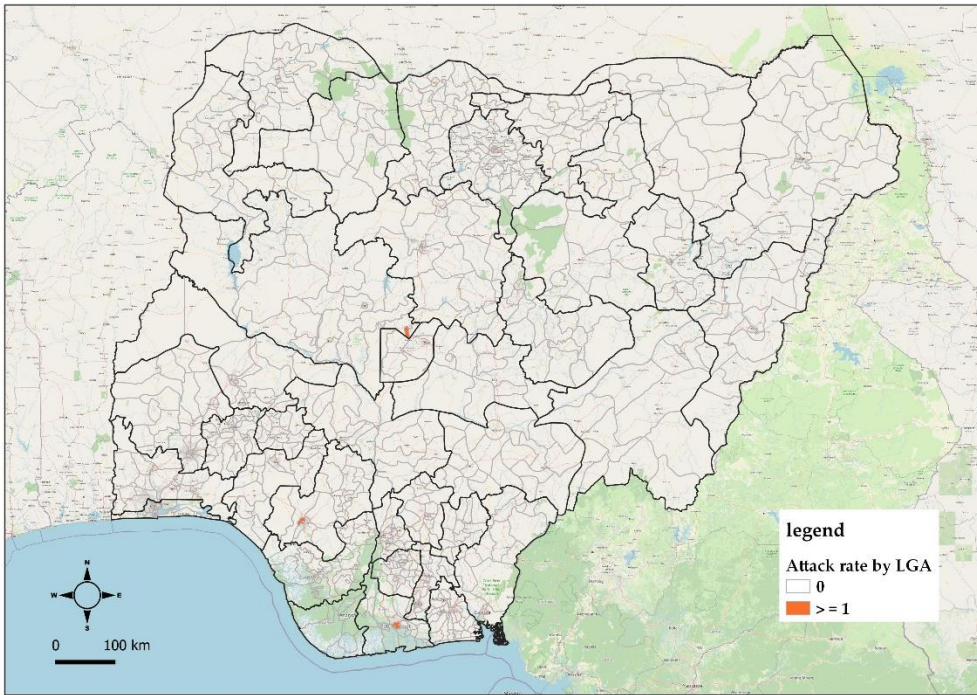


Figure 1: Map of Nigeria showing yellow fever outbreak attack rates in affected LGAs from January – April 2022

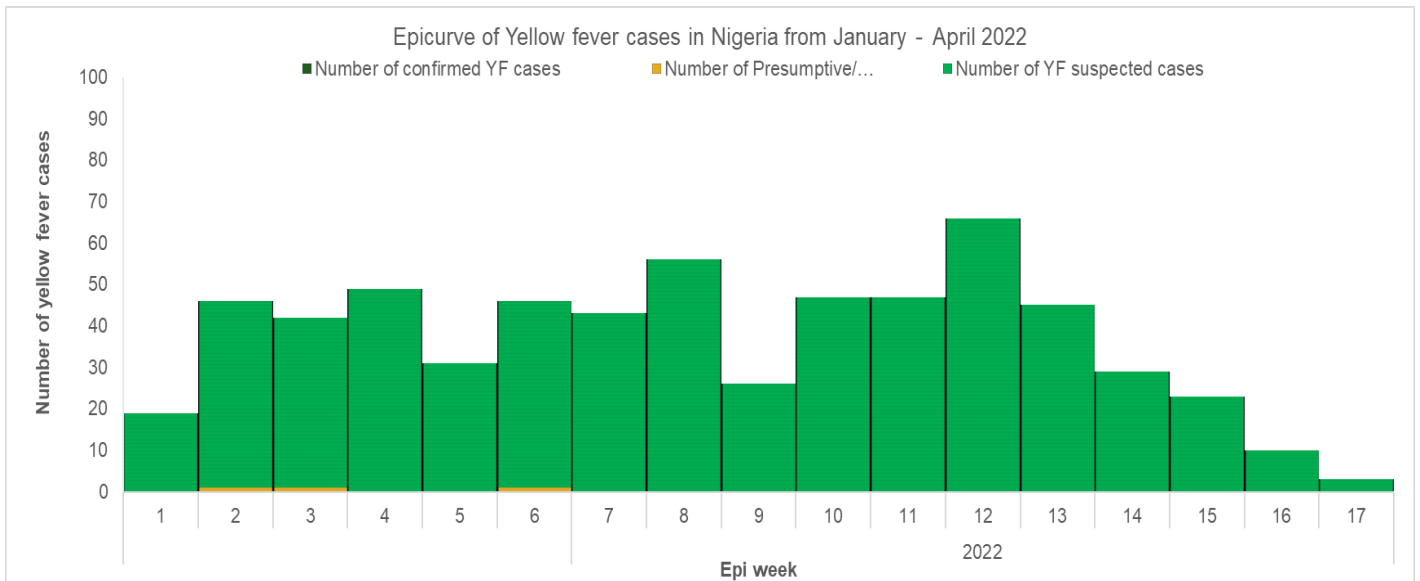


Figure 2: Epicurve of yellow fever cases in Nigeria from January – April 2022

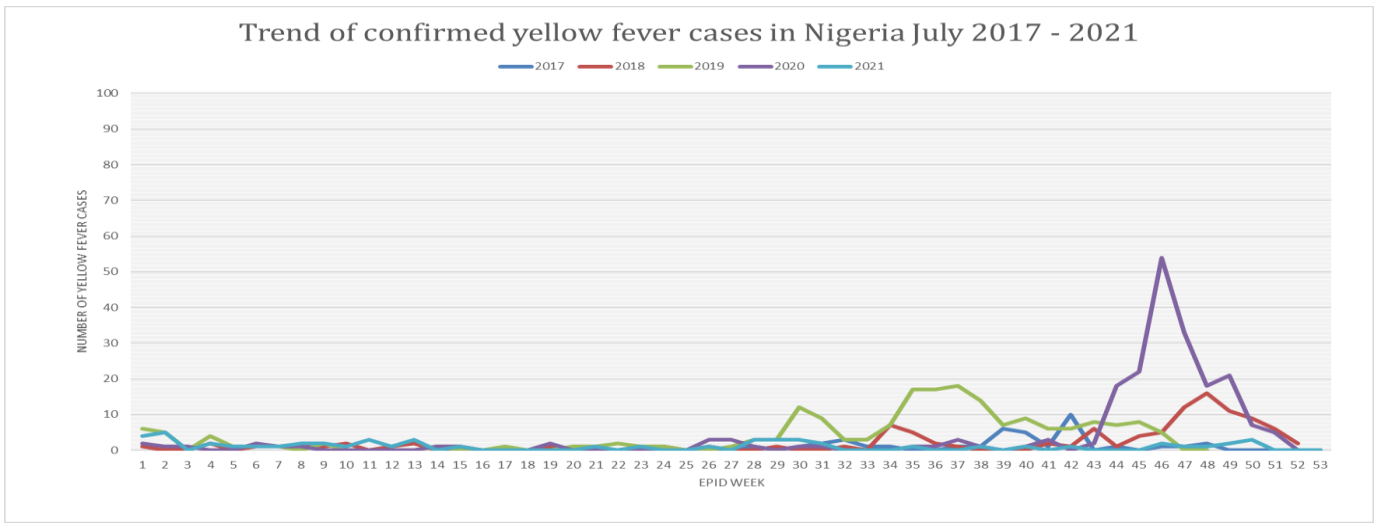


Figure 3: Trend of confirmed yellow fever cases in Nigeria 2017 – 2021

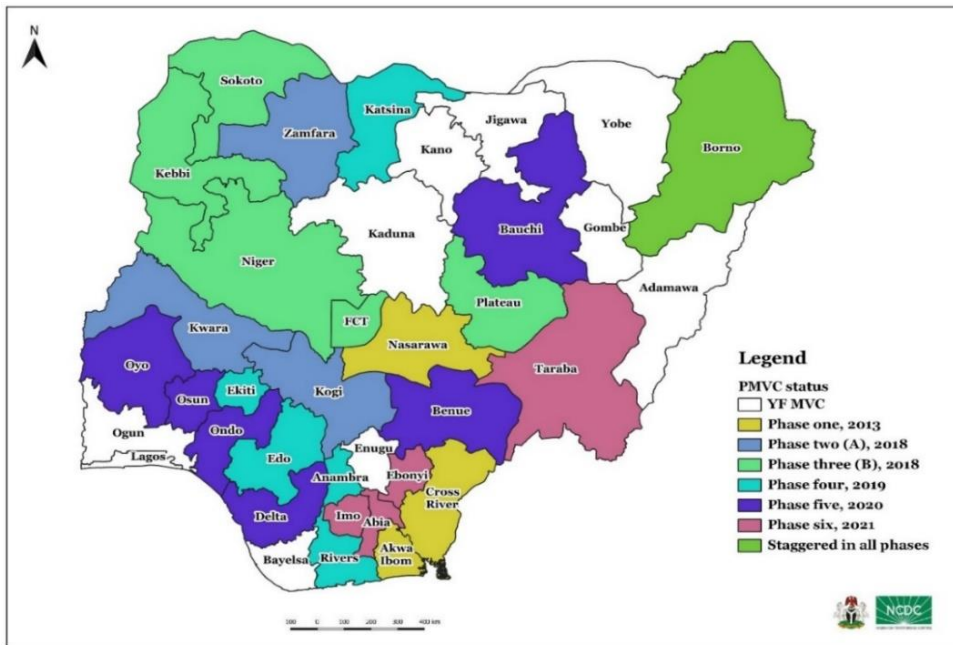


Figure 4: Map of Nigeria showing states and year of implementation of yellow fever mass vaccination campaigns from 2013 – 2021

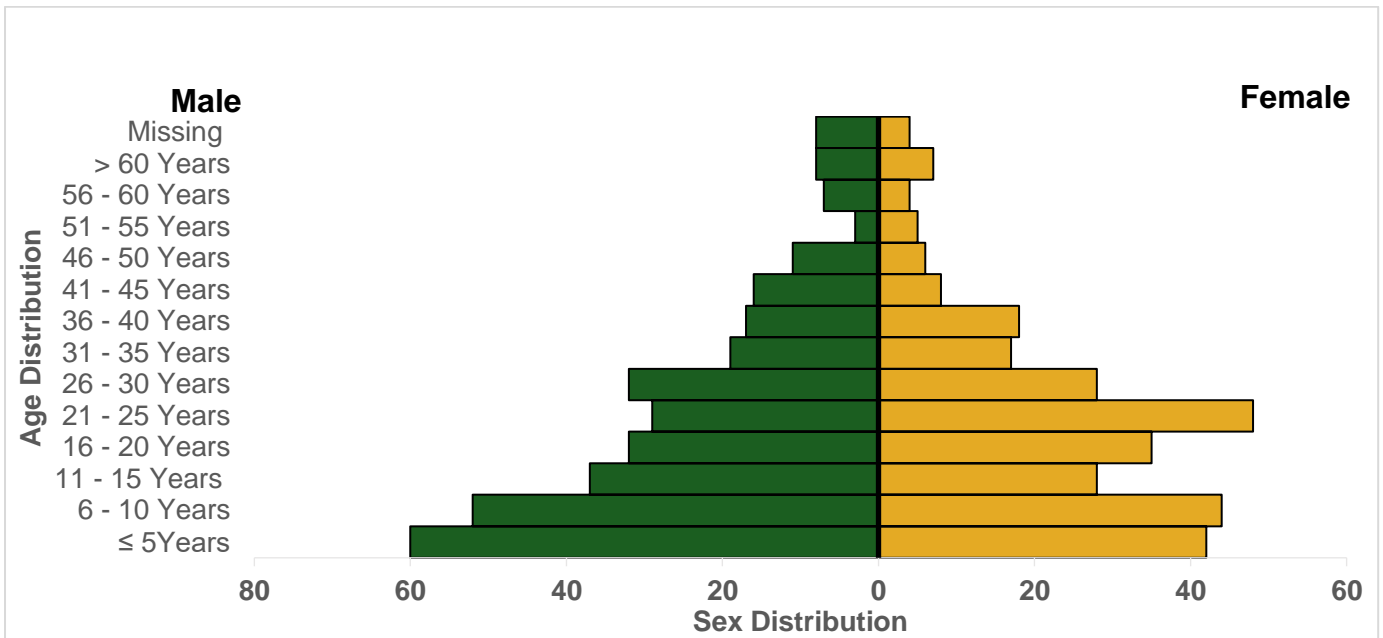


Figure 5: Age and sex distribution of yellow fever cases in Nigeria from January – April 2022.

Partners

