



SITUATION REPORT

Nigeria Centre For Disease Control (NCDC)

NCDC.GOV.NG

PLOT 800 EBITU UKIWE STREET, JABI ABUJA, NIGERIA TOLL FREE CALL: 6232 E:info@ncdc.gov.ng

@NCDCgov

TITLE:	UPDATE ON MPOX IN NIGERIA
SERIAL NUMBER:	29
EPI-WEEK:	45
DATE:	November 13, 2022

Table 1 – Key Indicators

Key Indicators	Number
Total confirmed cases in Epi Week 45, 2022	14
Total suspected cases from January 1 st to November 13 th , 2022 (Epi week 1 to 45)	1682
Total confirmed cases from January 1 st to November 13 th , 2022 (Epi week 1 to 45)	638
Total deaths from January 1 st to November 13 th , 2022 (Epi week 1 to 45)	7
Total deaths Sept 2017 - November 13 th , 2022	15
Total confirmed cases in 2017	88
Total confirmed cases in 2018	49
Total confirmed cases in 2019	47
Total confirmed cases in 2020	8
Total confirmed cases in 2021	34
Grand total confirmed cases (Sept 2017 – November 13 th , 2022)	864
Grand total suspected cases (Sept 2017 – November 13 th , 2022)	2194

- Fifty-nine (59) new suspected cases reported in Epi week 45, 2022 (7th to 13th November 2022) from thirteen (13) states and FCT – Lagos (12), Enugu (10), Ogun (9), Ondo (7), Rivers (4), Kaduna (3), Taraba (3), Borno (2), FCT (2), Edo (2), Imo (2), Delta (1), Kebbi (1) and Osun (1).
- Of fifty-nine (59) suspected cases, fourteen (14) new confirmed cases have been recorded in Epi week 45 from eight (8) states – Rivers (2), Borno (2), Enugu (2), Kaduna (2), Ogun (2), Lagos (2), Edo (1) and Ondo (1)
- From 1st January to 13th November 2022, Nigeria has recorded 1682 suspected cases with 638 confirmed cases (422 male, 216 female) from thirty-one (31) states and FCT – Lagos (158), Abia (46), Bayelsa (40), Imo (38), Rivers (33), Ondo (31), Ogun (31), Delta (26), Edo (24), Anambra (21), FCT (19), Adamawa (16), Nasarawa (15), Kaduna (14), Plateau (13), Akwa Ibom (11), Ebonyi (11), Benue (10), Oyo (10), Borno (10), Cross River (9), Kwara (9), Katsina (8), Taraba (7), Gombe (6), Kano (6), Kogi (4), Osun (4), Enugu (3), Kebbi (2), Niger (1) and Bauchi (1).
- Seven (7) associated deaths were recorded from 7 states in 2022 – Delta (1), Lagos (1), Ondo (1) and Akwa Ibom (1), Kogi (1), Taraba (1) and Imo (1), **CFR 1.1%**.



- Overall, since the re-emergence of Mpox in September 2017, 2194 suspected cases have been reported from 36 states and FCT in the country. Of these 2194 suspected cases, there have been 864 (39.4%) confirmed (574 male, 289 female) from 32 states and FCT - Lagos (188), Rivers (85), Bayelsa (83), Delta (55), Abia (49), Imo (46), Edo (34), Ondo (32), Ogun (32), FCT (25), Cross River (23), Anambra (23), Akwa Ibom (18), Nasarawa (17), Adamawa (16), Oyo (16), Plateau (16), Benue (12), Kaduna (12), Ebonyi (12), Borno (10), Kwara (9), Katsina (8), Taraba (7), Enugu (7), Gombe (6), Kano (6), Kogi (4), Osun (4), Ekiti (2), Niger (2), Kebbi (2) and Bauchi (1).
- Fifteen (15) deaths have been recorded since September 2017 (CFR= 1.7%) in eleven states - Lagos (3), Edo (2), Imo (2), Cross River (1), FCT (1), Rivers (1), Ondo (1) Delta (1), Akwa Ibom (1), Taraba (1) and Kogi (1).

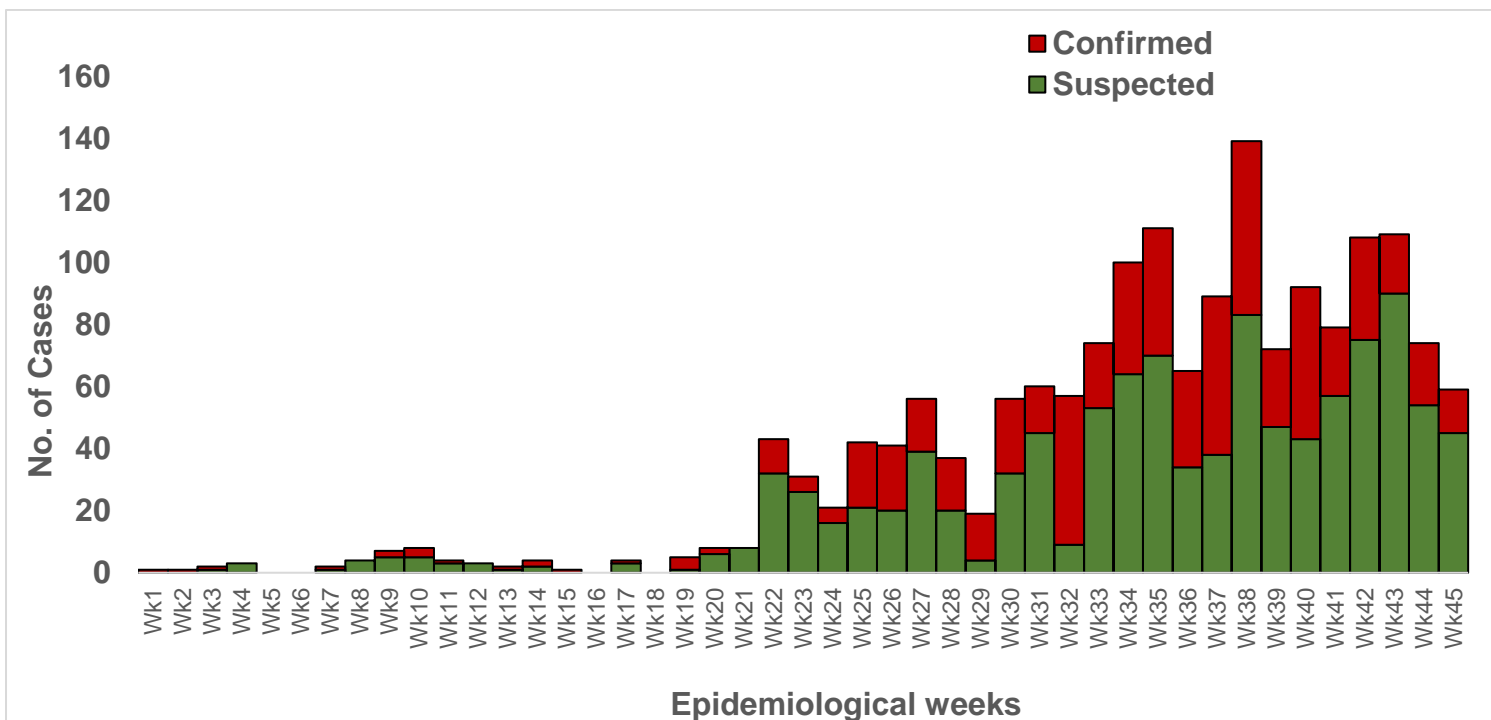


Figure 1: Epidemic Curve of Suspected & Confirmed Mpox Cases from January 1st 2022 till date

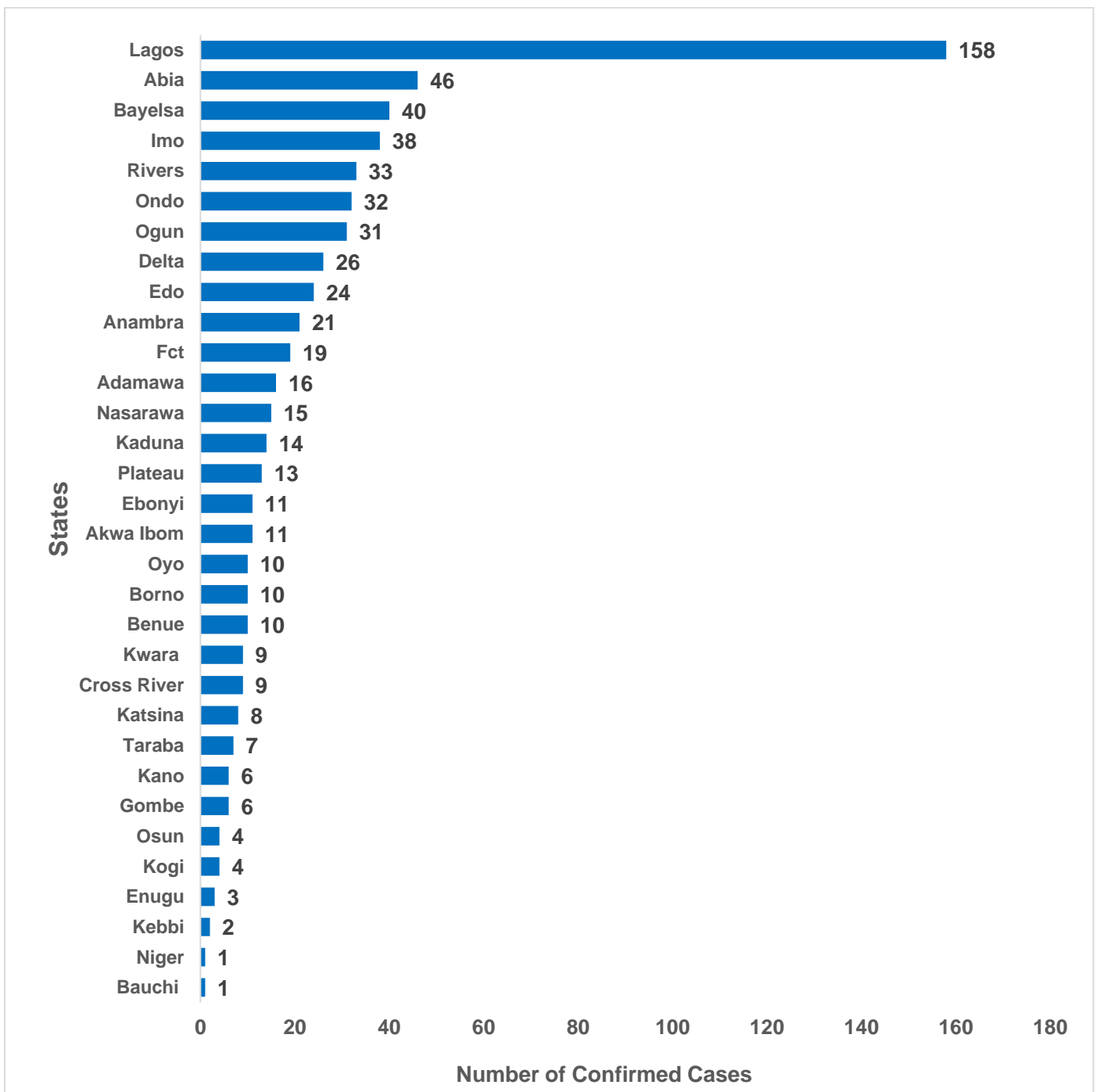


Figure 2: Bar chart Showing confirmed Mpox cases by state from January 1st –November 13th 2022

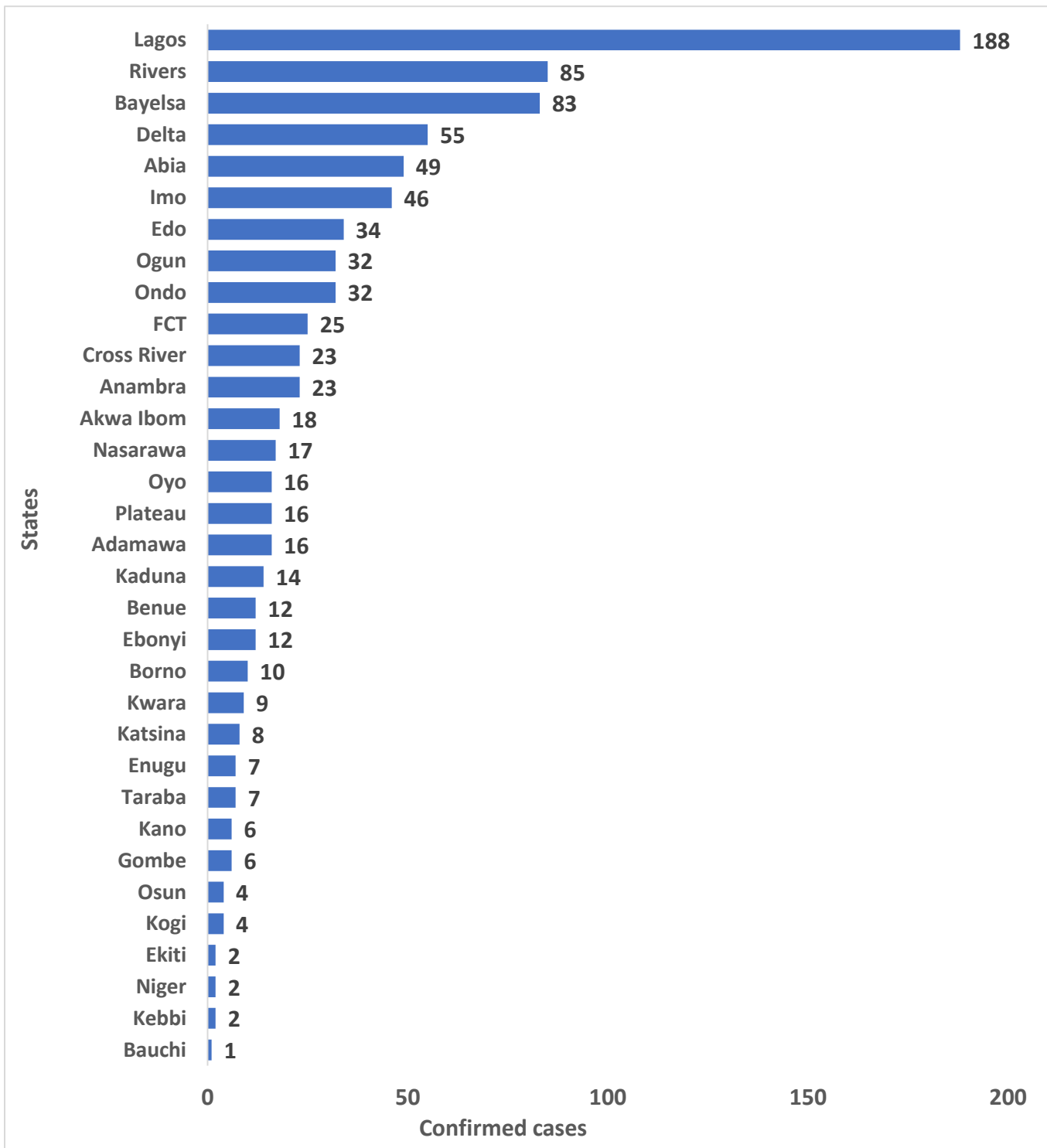


Figure 3: Bar chart Showing confirmed Mpox cases by state, September 2017 – November 13th 2022

Table 2: Nigeria confirmed Mpox cases by state, September 2017 – 13th November 2022

S/N	State	2017	2018	2019	2020	2021	2022	Total
1	Lagos	4	1	15	4	6	158	188
2	Rivers	25	14	7	1	5	33	85
3	Bayelsa	19	11	7	0	6	40	83
4	Delta	3	6	10	1	9	26	55
5	Abia	1	2	0	0	0	46	49
6	Imo	5	2	1	0	0	38	46
7	Edo	4	1	1	0	4	24	34
8	Ondo	0	0	0	0	0	32	32
9	Ogun	0	0	0	0	1	31	32
10	FCT	5	0	0	0	1	19	25
11	Anambra	0	1	1	0	0	21	23
12	Cross River	9	3	1	0	1	9	23
13	Akwa Ibom	6	0	1	0	0	11	18
14	Nasarawa	1	1	0	0	0	15	17
15	Adamawa	0	0	0	0	0	16	16
16	Plateau	0	2	0	1	0	13	16
17	Oyo	1	3	2	0	0	10	16
18	Kaduna	0	0	0	0	0	14	14
19	Ebonyi	0	0	0	1	0	11	12
20	Benue	2	0	0	0	0	10	12
21	Borno	0	0	0	0	0	10	10
22	Kwara	0	0	0	0	0	9	9
23	Katsina	0	0	0	0	0	8	8
24	Taraba	0	0	0	0	0	7	7
25	Enugu	1	2	1	0	0	3	7
26	Gombe	0	0	0	0	0	6	6
27	Kano	0	0	0	0	0	6	6
28	Kogi	0	0	0	0	0	4	4
29	Osun	0	0	0	0	0	4	4
30	Kebbi	0	0	0	0	0	2	2
31	Niger	0	0	0	0	1	1	2
32	Ekiti	2	0	0	0	0	0	2
33	Bauchi	0	0	0	0	0	1	1
	Grand Total	88	49	47	8	34	638	864

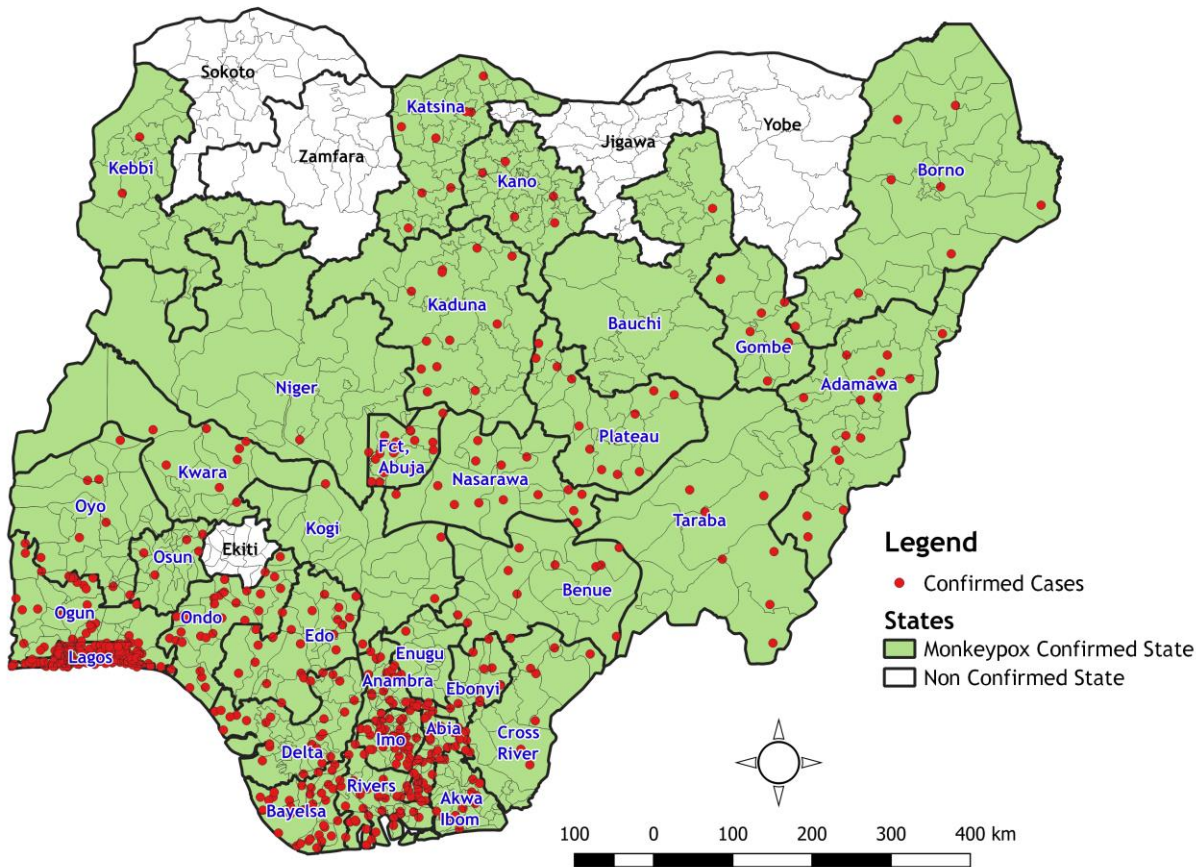


Figure 4: Map of Nigeria Showing States with Confirmed Mpox Cases from January 2022 till date (31 states and FCT)

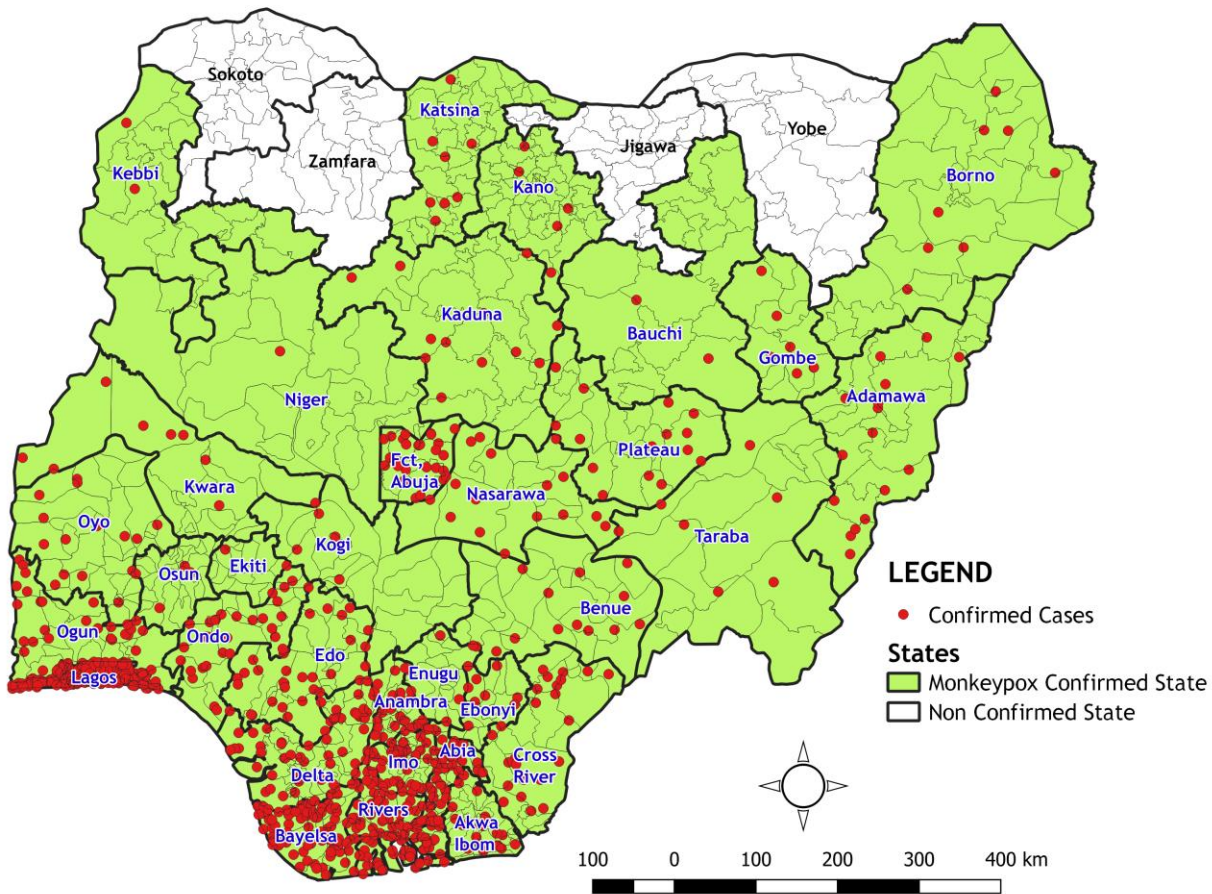


Figure 5: Map of Nigeria Showing States with Confirmed Mpox Cases from September 2017 till date (32 states and FCT)

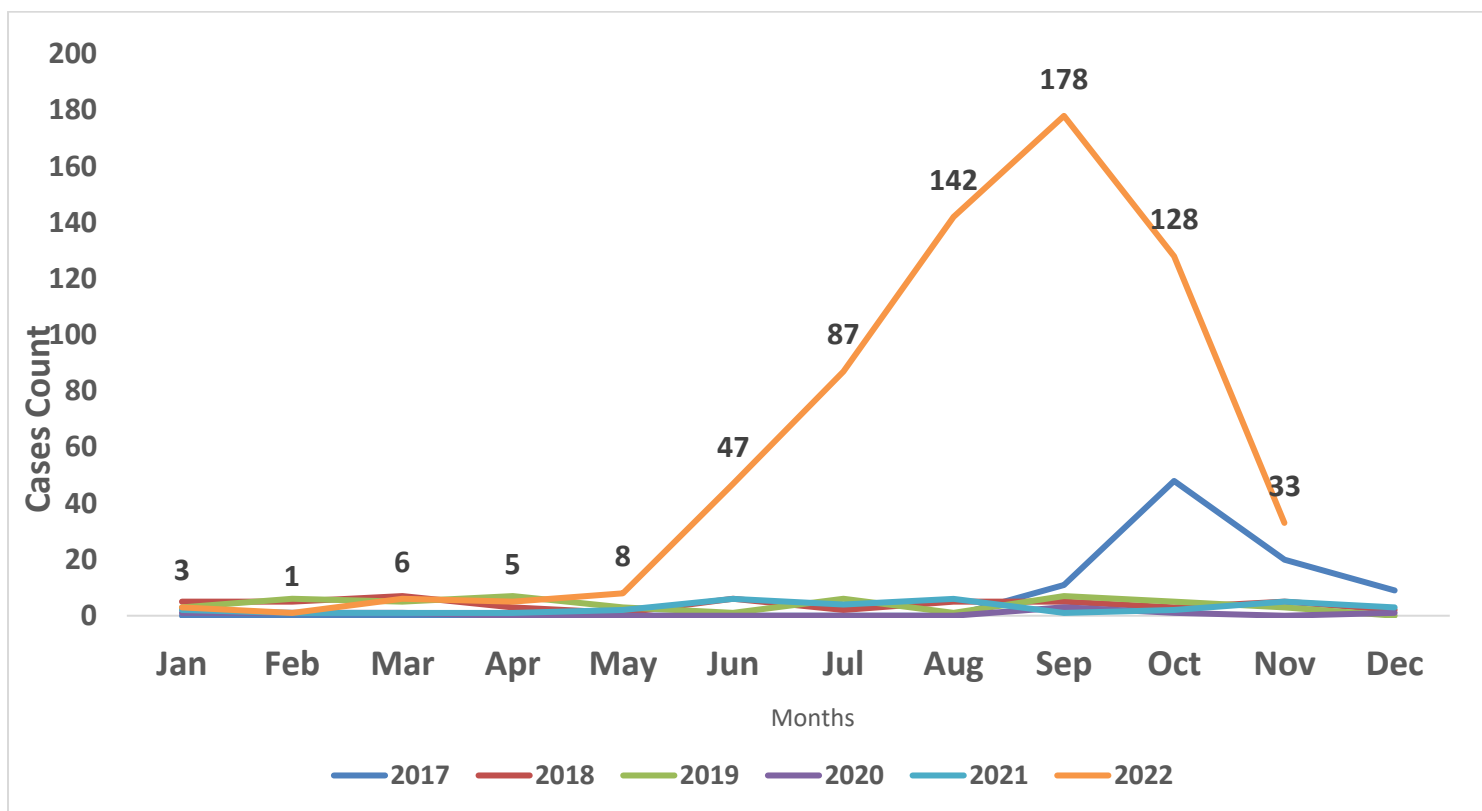


Figure 6: Nigeria confirmed Mpox cases by the year of incidence- September 2017 to 13th November 2022

Table 3: Age distribution of confirmed Mpox cases September 2017 – 13th November 2022

Age Group	2017	2018	2019	2020	2021	2022	Total
0-10 Years	7	5	1	0	1	104	118
11-20 Years	12	4	1	0	4	98	119
21-30 Years	34	13	13	4	10	159	233
31- 40 Years	26	17	22	4	13	180	262
41-50 Years	9	10	9	0	5	72	105
>50 Years	0	0	1	0	1	25	27
+ Total	88	49	47	8	34	638	864

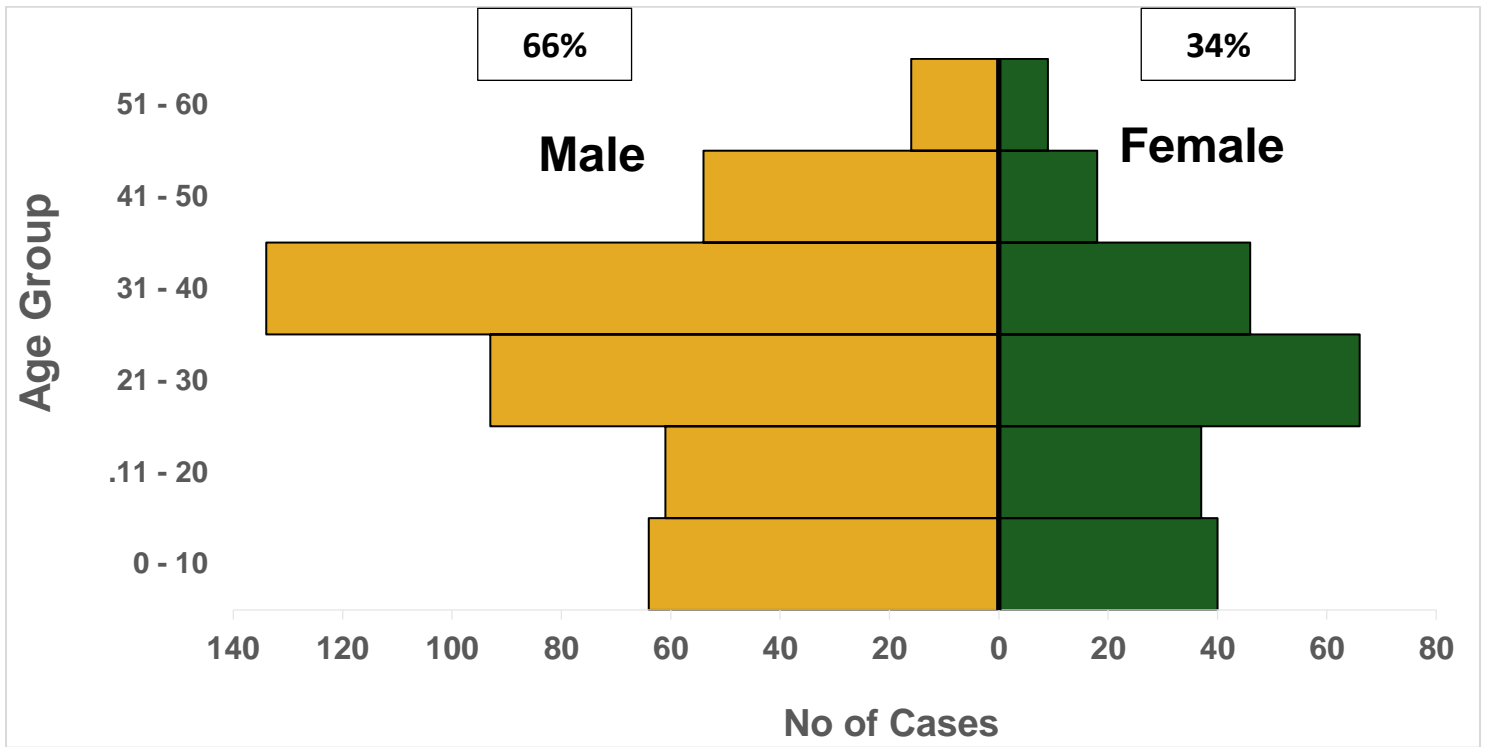


Figure 7: Age and sex distribution of Nigeria confirmed Mpox cases January 1st –November 13th 2022

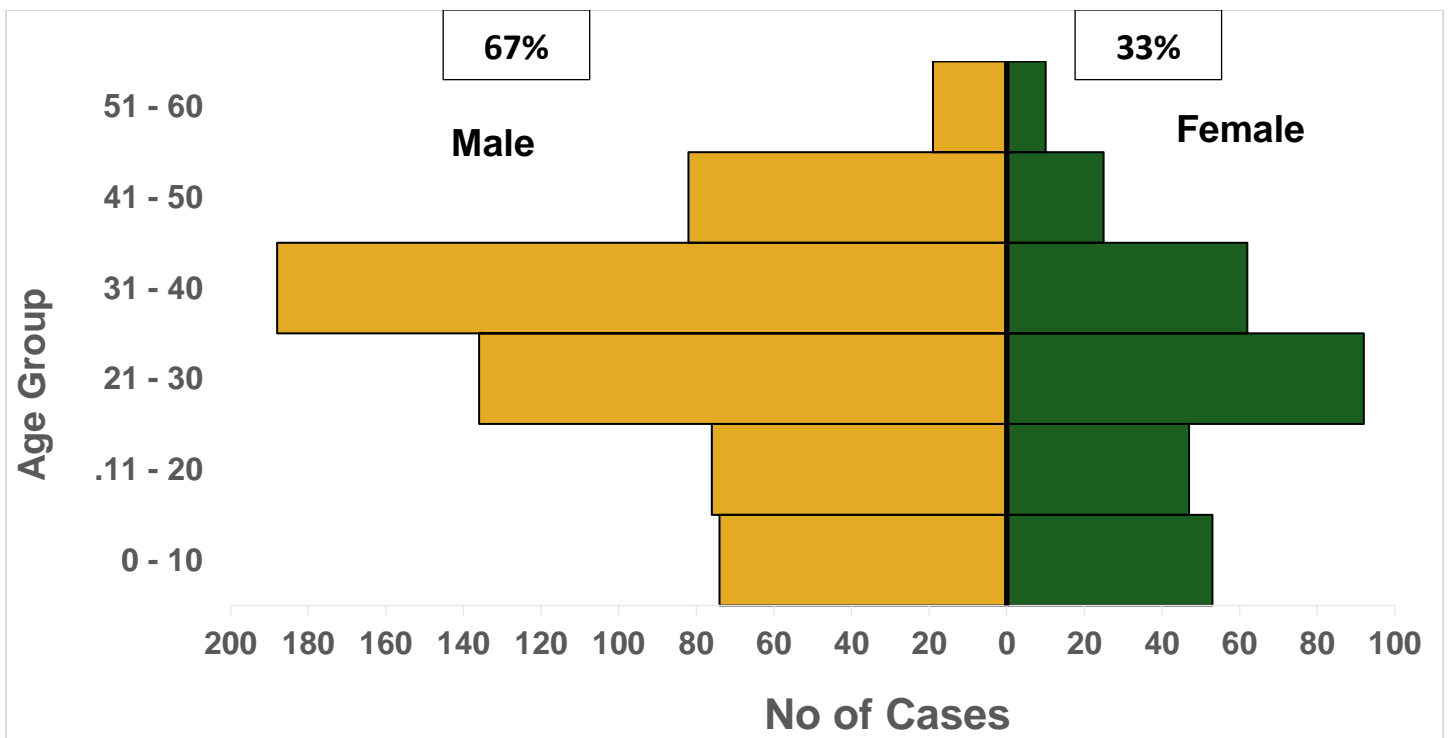


Figure 8: Age & sex distribution of Nigeria confirmed Mpox cases September 2017 –November 13th 2022

Response activities

Pillar	Activities to date	Next steps
Coordination	<ul style="list-style-type: none"> Supported the daily activities of the activated Emergency Operations Centre (EOC) 	<ul style="list-style-type: none"> Continue to coordinate the multisectoral and multi agency national Mpox response
Risk communication	<ul style="list-style-type: none"> Tracked and monitored responses to rumors and misinformation on Mpox in Nigeria Aired Mpox jingles in five states (Ebonyi, Adamawa, Lagos, Rivers, Plateau) and the FCT 	<ul style="list-style-type: none"> Continue the engagement with the public via social media with key messages on Mpox Monitor Mpox jingles aired and infodemics
Surveillance	<ul style="list-style-type: none"> Provided off-site support to states on case identification, reporting and response 	<ul style="list-style-type: none"> Conduct the planned enhanced surveillance and active case search in high-reporting states To provide off-site support to states on the conduct of active case searches in facilities and communities Monitor Mpox data entry on SORMAS and follow up with SORMAS SSOs on ensuring completeness of data
Case management	<ul style="list-style-type: none"> Followed up confirmed cases in states and FCT 	<ul style="list-style-type: none"> Develop case management protocol for home-based care Plan review and adaptation of case management guideline
Laboratory	<ul style="list-style-type: none"> Retrieved and tested 59 pending samples from National Reference and Central Public Health Laboratories Followed up with states that had challenges with sample management 	<ul style="list-style-type: none"> Sequence selected Mpox samples to determine if the Mpox clade in Nigeria has changed due to the emergence of new clades Train states with challenges on appropriate sample collection techniques, sample packaging and transport Continue collaborating with Surveillance and Case management pillars to harmonise data

Notes on this report

Data Source

Information for this disease was case-based data retrieved from the National Mpox Emergency Operations Centre.

Case definitions

Suspected case

...PROTECTING THE HEALTH OF NIGERIANS



- An acute illness with fever $>38.3^{\circ}\text{C}$, intense headache, lymphadenopathy, back pain, myalgia, and intense asthenia followed one to three days later by a progressively developing rash often beginning on the face (most dense) and then spreading elsewhere on the body, including soles of feet and palms of the hand

Probable case

- A case that meets the clinical case definition is not laboratory-confirmed but has an epidemiological link to a confirmed case

Confirmed case

- A clinically compatible case that is laboratory confirmed

Contact

- Any person who has been in direct or indirect contact with a confirmed case since the onset of symptoms, i.e., contact with skin lesions, oral secretions, urine, faeces, vomitus, blood, sexual contact, sharing a common space (anyone who has been in proximity with or without physical contact with a confirmed case)

Calculations

- Case Fatality Rate (CFR) for this disease is reported for confirmed cases only