

Cholera Situation Report

WEEKLY EPIDEMIOLOGICAL REPORT 16
Epi Week 39: 27 September – 03 October 2021

Key Points

Table 1: Summary of current week (Epi week 39 ,2021)

Suspected Cases	Deaths (Suspected cases)	Case Fatality Ratio (%)	States Reporting Cases	LGAs Reporting cases
737	11	1.5%	13	35

Table 2: Cumulative summary from Epi week 1-39,2021

Suspected Cases	Deaths (Suspected cases)	Case Fatality Ratio (%)	States Reporting Cases	LGAs Reporting cases
88,704	3,208	3.6%	32	366

Week 39 Highlights

- Thirty-one states and FCT have reported suspected cholera cases in 2021. These are Abia, Adamawa, Bauchi, Bayelsa, Benue, Borno, Cross River, Delta, Ebonyi, Ekiti, Enugu, FCT, Gombe, Jigawa, Kaduna, Kano, Katsina, Kebbi, Kogi, Kwara, Nasarawa, Niger, Ogun, Ondo, Osun, Oyo, Plateau, Sokoto, Taraba, Yobe, Rivers and Zamfara
- In the reporting week, 13 states reported **737** suspected cases - Yobe (230), Zamfara (136), Bauchi (113), Sokoto (84), Adamawa (42), Katsina (35), Oyo (32), Ebonyi (26), Kebbi (26), Gombe (5), Nasarawa (4), Kano (3) and Abia (1)
- There was a **37% decrease in the number of new suspected cases** in week 39 (737) compared with week 38 (1,163)
- Yobe (230), Zamfara (136) and Bauchi (113) account for 65% of 737 suspected cases reported in week 39
- During the reporting week, 159 Cholera Rapid Diagnostic Tests (RDT) were conducted. RDT conducted were from Zamfara (136) and Adamawa (23). Of this, a total of 12 (8%) were positive by RDT
- A total of 137 Culture tests were conducted in Zamfara (136)) and Adamawa (1). Of this, 3 (2%) were positive
- Of the cases reported, there were eleven deaths from Sokoto (3), Yobe (3), Bauchi (3), Ebonyi (1) and Kebbi (1) states with a weekly case fatality ratio (CFR) of 1.5%
- Two new states (Ebonyi and Oyo) reported cases in week 39
- The national multi-sectoral EOC activated at level 02 continues to coordinate the national response

Cumulative Epi-Summary

- As at 3rd October 2021, a total of 88,704 suspected cases including 3,208 deaths (CFR 3.6%) have been reported from 31 states and FCT in 2021
- Of the suspected cases since the beginning of the year, **age group 5 - 14 years** is the most affected age group for male and female
- Of all suspected cases, **50% are males and 50% are females**
- Three states - Bauchi (19,451 cases), Kano (12,116 cases) and Jigawa (10,763 cases) account for 48% of all cumulative cases
- Eleven LGAs across five states Bauchi (4), Zamfara (3), Jigawa (2), Kano (1), and Katsina (1) have reported more than 1,000 cases each this year

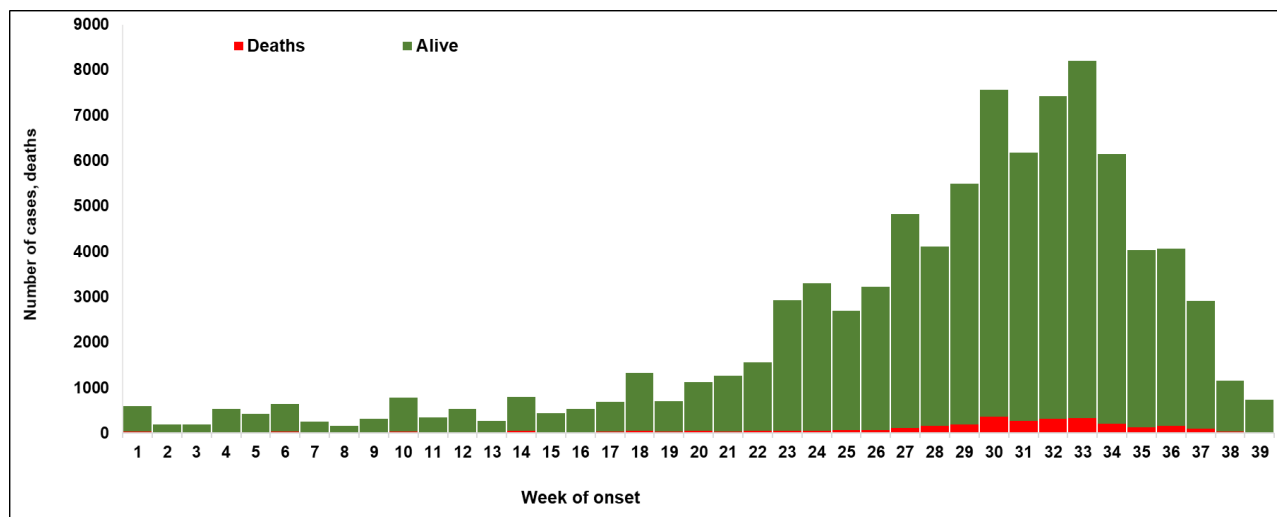
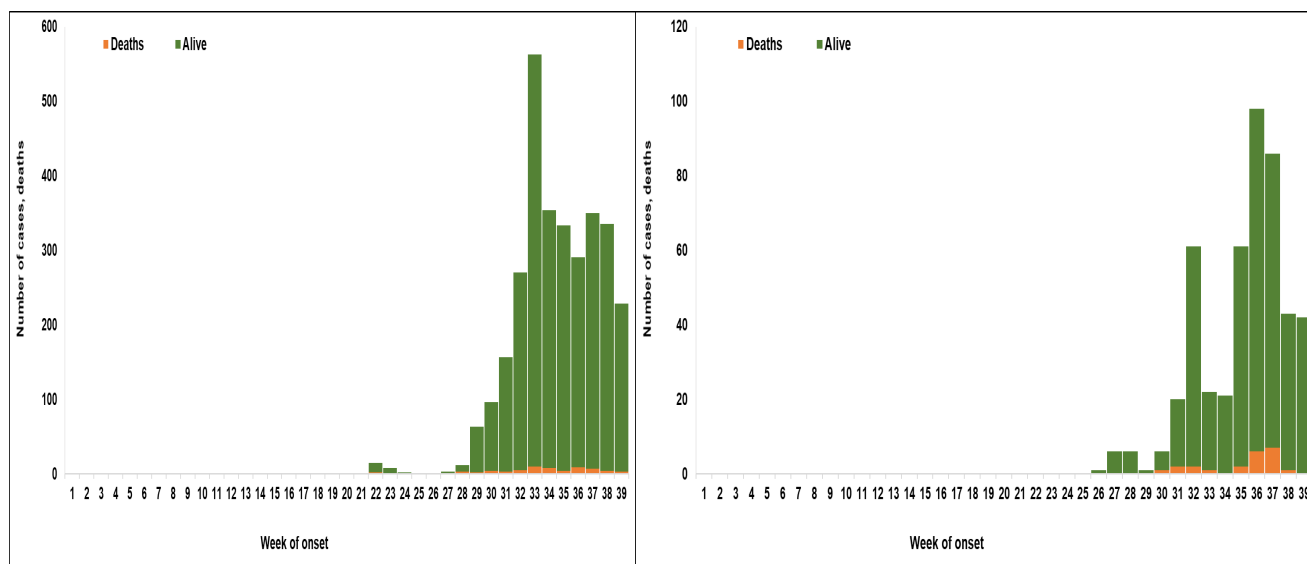
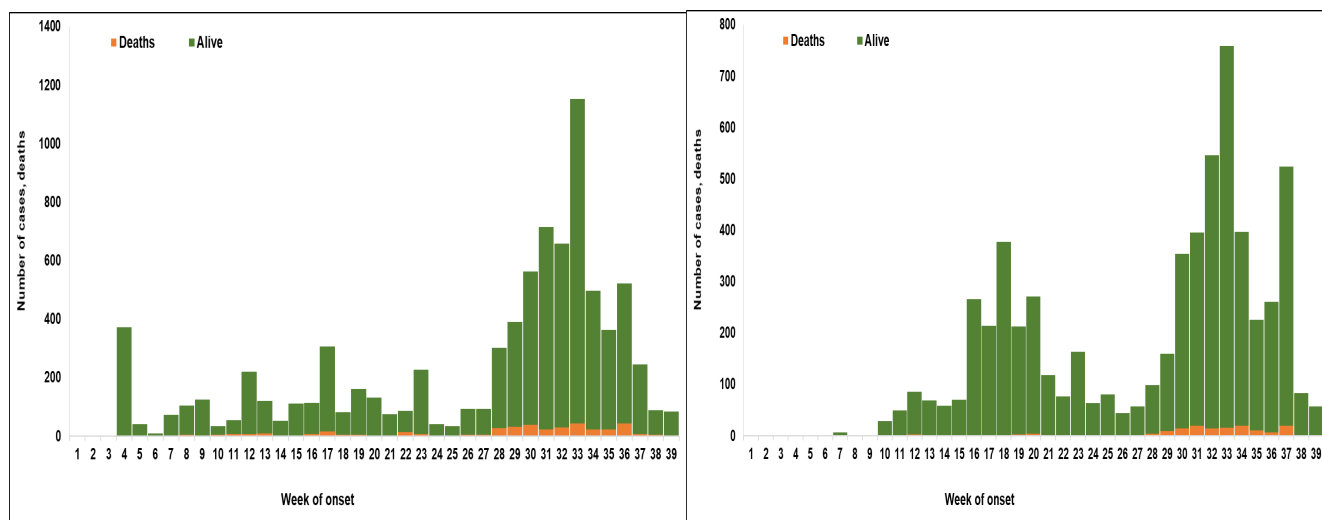


Figure 1. Epidemic curve of weekly reported Cholera cases, week 1 to week 39, 2021
 *530 was a backlog added to 633 cases in week 38 making a total of 1,163 cases



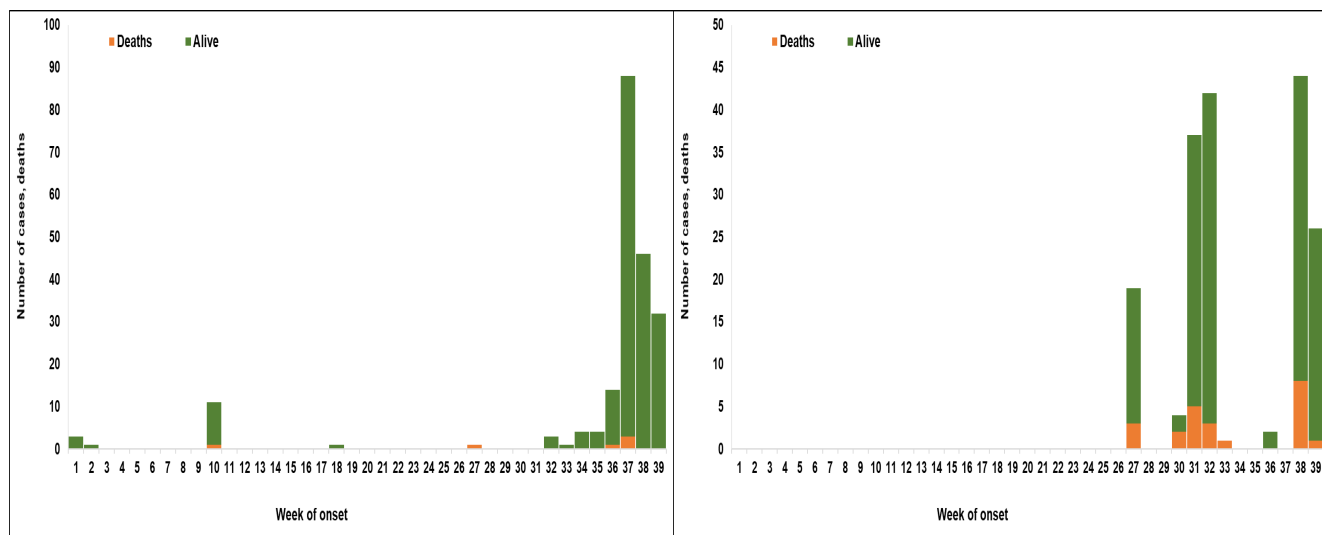
Yobe State

Adamawa State



Sokoto State

Zamfara State



Oyo State

Ebonyi State

Figure 2. State epidemic curve of weekly reported cholera cases, week 1 to week 39, 2021

Table 3: Top 10 states in cumulative cases

No	State	Cases	Percent of cumulative cases	Cumulative % of total cases
1	Bauchi	19,452	22%	22%
2	Kano	12,116	14%	36%
3	Jigawa	10,763	12%	48%
4	Sokoto	8,344	9%	57%
5	Katsina	8,193	9%	66%
6	Zamfara	6,250	7%	73%
7	Niger	4,961	6%	79%
8	Kebbi	4,568	6%	85%
9	Yobe	3,084	3%	88%
10	Kaduna	2,083	2%	90%
	Total	79,814	90%	

Table 4: Top 20 Local Government Areas (LGAs) in cumulative cases

No	LGA	State	Cases	% of cumulative cases	Cumulative %
1	Bauchi	Bauchi	9290	10%	10%
2	Hadejia	Jigawa	2331	3%	13%
3	Dutse	Jigawa	2129	2%	15%
4	Gusau	Zamfara	2032	2%	17%
5	Sumaila	Kano	1923	2%	19%
6	Toro	Bauchi	1849	2%	21%
7	Funtua	Katsina	1766	2%	23%
8	Shinkafi	Zamfara	1341	2%	25%
9	Ganjuwa	Bauchi	1306	1%	26%
10	Tafawa Balewa	Bauchi	1119	1%	27%
11	Zurmi	Zamfara	1093	1%	28%
12	Birnin Kudu	Jigawa	970	1%	29%
13	Gwoza	Borno	960	1%	30%
14	Dange-Shuni	Sokoto	958	1%	31%
15	Gwadabawa	Sokoto	914	1%	32%
16	Ningi	Bauchi	861	1%	33%
17	Bichi	Kano	837	1%	34%
18	Illela	Sokoto	722	1%	35%
19	Warji	Bauchi	691	1%	36%
20	Kaugama	Jigawa	670	1%	37%
	Total		33,762	37%	

Figure 3. Percentage contribution of weekly cases by state in recent 10 weeks, week 29- 38, 2021

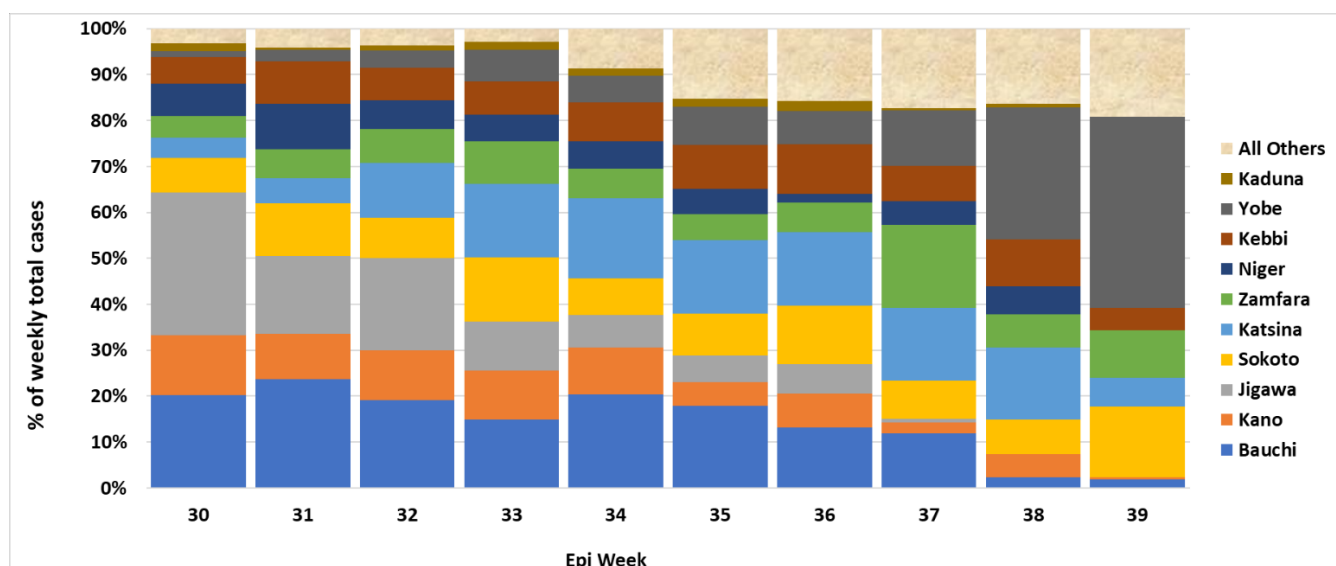




Figure 4. Age-Sex Pyramid for cumulative cholera cases, week 1-39 , 2021: N=88,431

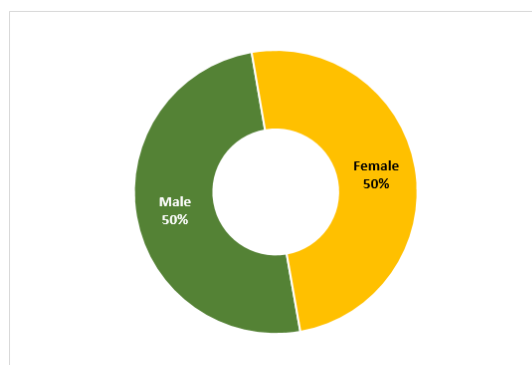


Figure 5. Sex disaggregation for cumulative cholera cases, week 1-39 , 2021: N=88,431

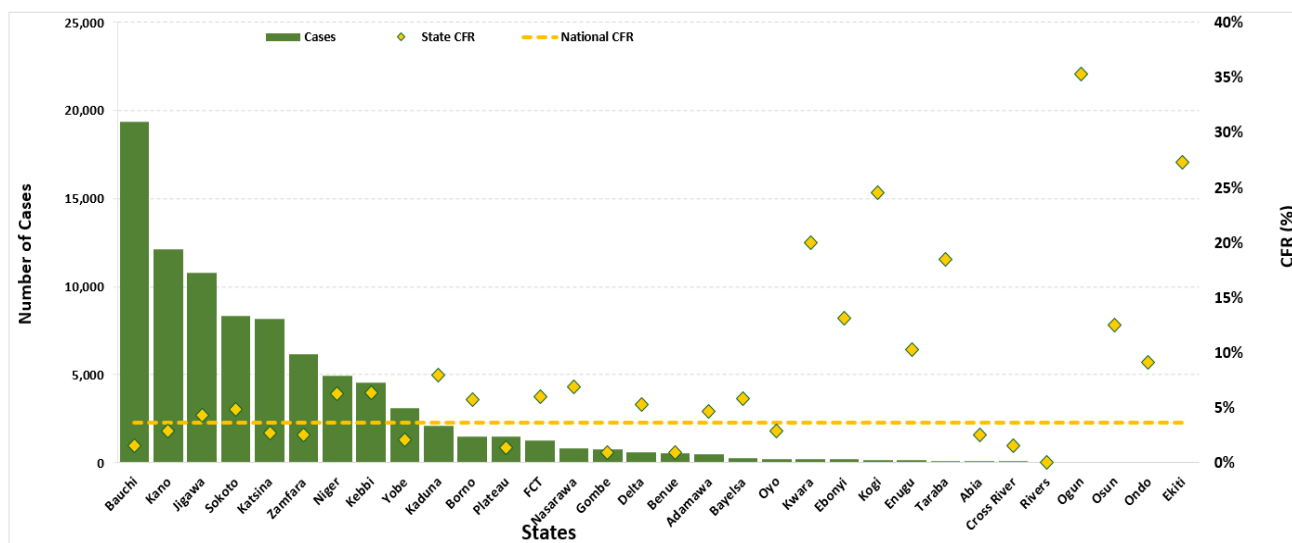


Figure 6: Number of cumulative cholera cases with case fatality ratio (CFR) by state, week 1-39, 2021

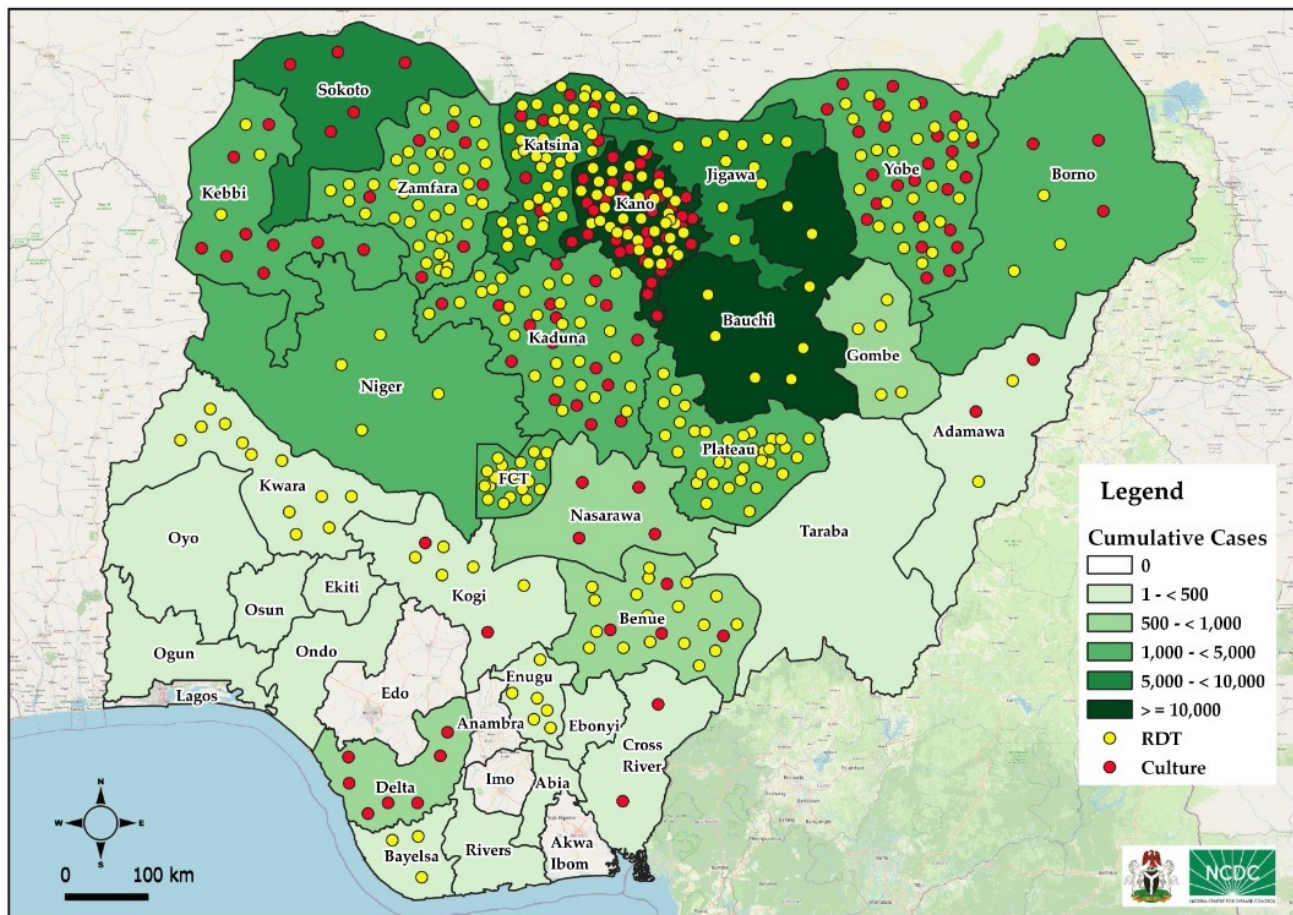


Figure 7. Map of Nigeria showing states with RDT + Culture confirmation and suspected cases, week 1- 39, 2021

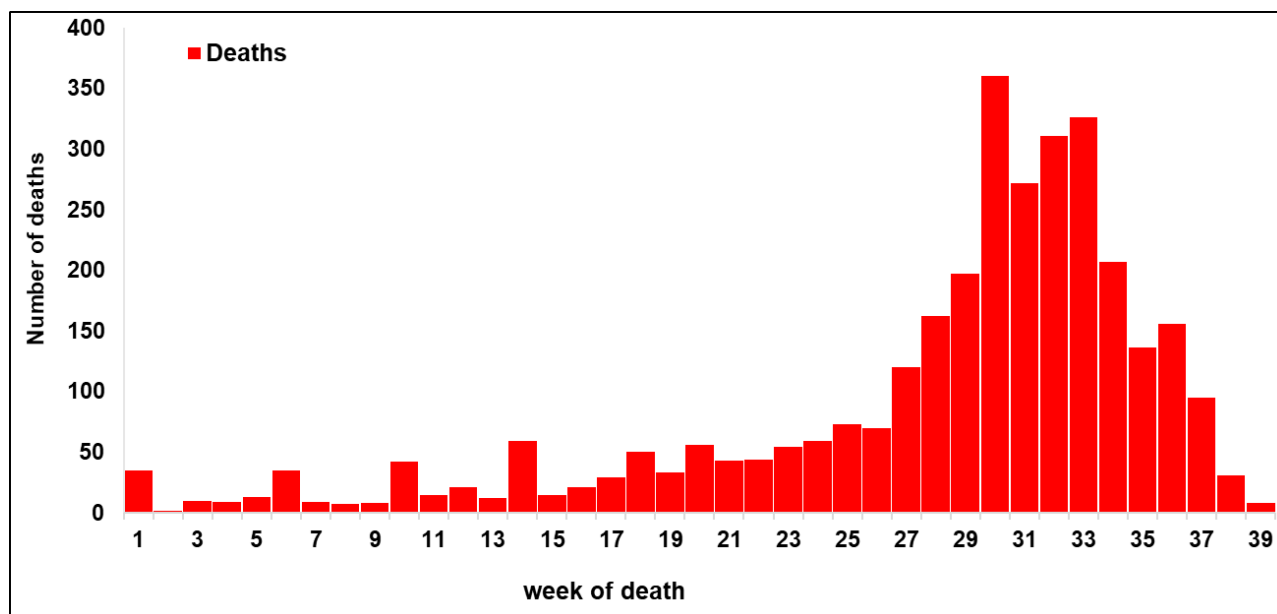


Figure 8: Trends in Deaths, week 1-39, 2021, Nigeria

Table 6: Response activities

Pillar	Activities to date	Next steps
Coordination	<ul style="list-style-type: none"> Response is being coordinated by the national multi-sectoral EOC hosted at NCDC, in collaboration with Federal Ministry of Health (FMOH), Federal Ministry of Water Resources (FMWR), Federal Ministry of Environment (FMEnvrt), and partners National Rapid Response Teams (RRTs) with response commodities deployed by NCDC to support the response in ten states - Benue, Kano, Kaduna, Zamfara, Bauchi, Plateau, Jigawa, Katsina, Niger and the FCT 	<ul style="list-style-type: none"> The national multi-sectoral EOC activated at level 02 continues to coordinate the national response Continue zonal level trainings on cholera detection, reporting and case management
Surveillance	<ul style="list-style-type: none"> Ongoing surveillance in all states through the routine Integrated Disease Surveillance and Response (IDSR) and Event Based Surveillance (EBS) Providing offsite/onsite support to states and follow up for daily reporting and progress with response activities 	<ul style="list-style-type: none"> Continue data collation and harmonisation
Case Management & IPC	<ul style="list-style-type: none"> Provided technical support and response commodities to affected states 	<ul style="list-style-type: none"> Continue providing technical support on case management and IPC to states Continue training of Health Care Workers (HCW) on management of cholera Continuous follow up with states for updates and support
Laboratory	<ul style="list-style-type: none"> Supported testing of samples received from Benue, Niger, Plateau, Bauchi, Jigawa, Kaduna, Kano, Kwara, Katsina, Enugu, Bayelsa, Adamawa, Nasarawa, Gombe, Yobe, Borno, Oyo and FCT at NCDC National Reference Laboratory (NRL), Abuja Ongoing testing across state-level laboratories 	<ul style="list-style-type: none"> Planned sub-national level training of Laboratory Scientists on sample collection and analysis
WASH	<ul style="list-style-type: none"> Hygiene promotion, provision of safe water, water chlorination, household disinfection and sensitisation on dangers of open defecation ongoing in high-risk communities by WASH sector partners and Community Health Volunteers in the affected states National Youth Volunteer Programme on Clean Nigeria Campaign launched by 	<ul style="list-style-type: none"> Continue distribution of hygiene kits to affected states

	<p>FMWR</p> <ul style="list-style-type: none"> • Continuous construction of sanitation and hygiene facilities with boreholes in cholera hotspots 	
Logistics	<ul style="list-style-type: none"> • Essential response commodities are being distributed to all cholera affected states 	<ul style="list-style-type: none"> • Continue supporting affected states with essential response commodities
Vaccination (led by NPHCDA)	<ul style="list-style-type: none"> • Epidemiological trend is being monitored to guide ICG request for planned vaccination campaigns • Reactive OCV campaigns were conducted in March at Agatu LGA, Benue State and in July at Bauchi LGA, Bauchi State 	<ul style="list-style-type: none"> • Continue monitoring epidemiological trend to guide ICG request for planned vaccination campaigns • Planned OCV campaigns in Jigawa State (LGAs: Dutse, Birnin-Kudu, Hadejia), Zamfara State (LGAs: Shinkafi, Zurmi), Yobe State (LGA: Damaturu)
Risk communication	<ul style="list-style-type: none"> • Cholera jingles are being aired in English and local languages • Community social mobilisation, media interviews, distribution of Information, Education and Communication (IEC) materials and awareness campaigns ongoing in affected communities • Conducted Ministerial press briefings 	<ul style="list-style-type: none"> • Continue airing of cholera jingles and distribution of IEC materials • Continue media engagement meetings and training of journalist, other media professionals • Continued follow-up with states for update on risk communication
State Response	Multi-sectoral State-level EOCs currently activated in Zamfara, Kaduna, Bauchi, Plateau, Kano, Enugu, Jigawa, Niger, Gombe, Sokoto, Katsina, Adamawa, Borno, Oyo and the FCT	Continue supporting state response activities

Challenges

- Difficulty in accessing some communities due to security concerns
- Open defecation in affected communities
- Lack of potable drinking water in some rural areas and urban slums
- Inadequate vaccines to cover all LGAs, wards and settlements with cholera outbreaks
- Inadequate health facility infrastructure and cholera commodities for management of patients (Ringer's lactate and ORS)
- Inadequate trained personnel in states for case management
- Poor and inconsistent reporting from states

Next Steps

- Conduct training on cholera surveillance, hotspot mapping and develop state level preparedness and response plans
- Maintain communication with and support to states for data reporting and response
- Conduct OCV campaigns in Jigawa, Zamfara and Yobe States
- Develop and submit cholera vaccination request to International Coordinating Group (ICG) and the Global Task Force for Cholera Control (GTFCC) for reactive and preventive cholera campaign with NPHCDA
- Continue advocacy to State Governments to increase funding in WASH infrastructure
- Pre-position response commodities across states
- Build capacity for sample collection, transportation and laboratory diagnosis
- Planned deployment of RRTs to more affected states
- Scale up risk communications

Notes on this report

Data Source

Information for this disease was case based data retrieved from the National Cholera Emergency Operations Centre.

Case definitions

Suspected Case:

- Any patient aged ≥ 2 years with acute watery diarrhoea and severe dehydration or dying from acute watery diarrhoea with or without vomiting
- In areas where a Cholera outbreak is declared, any person presenting with or dying from acute watery diarrhoea with or without vomiting

Confirmed Case: A suspected case in which *Vibrio cholerae* O1 or O139 has been isolated in the stool by culture

Erratum

- 140 probable cholera deaths were reported to have occurred in previous epidemiological weeks and have been updated
- An additional 530 suspected cases were reported with a date of onset falling in week 38. Week 38 total suspected cases thus increases from 633 earlier reported to 1163
- 1,963 records suspected cholera cases in Yobe state were erroneously added during the data management processes, these have been appropriately cleaned out

DATA AS REPORTED AND ACCURATE BY NCDC AS AT MIDNIGHT 3rd OCTOBER 2021