

COVID-19 SITUATION REPORT

SITUATION REPORT 161

Friday, 7th August 2020



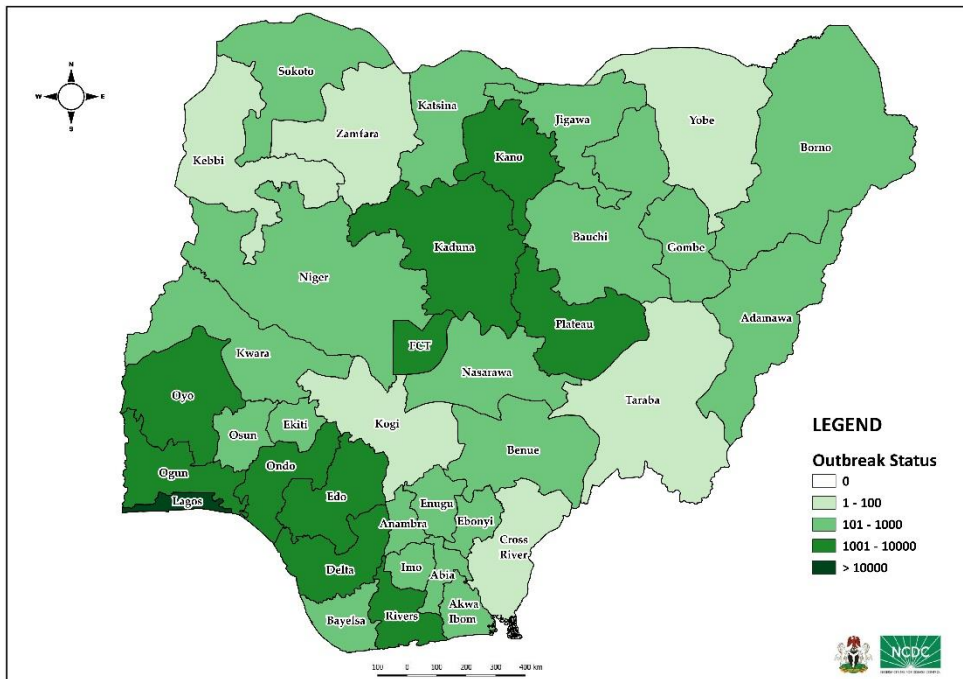
DATA AS REPORTED AND ACCURATE BY NCDC AS AT MIDNIGHT 7th AUGUST 2020

HIGHLIGHTS

- Four hundred and forty-three (**443**) confirmed cases were reported in the last 24 hours from **19** states – Plateau (103), Lagos (70), FCT (60), Ondo (35), Edo (27), Rivers (27), Kaduna (20), Osun (19), Borno (18), Oyo (18), Kwara (11), Adamawa (9), Nasarawa (7), Gombe (6), Bayelsa (4), Imo (4), Bauchi (2), Ogun (2) and Kano (1).
- Two hundred and seven (**207**) cases were discharged in the last 24 hours in **17** states – Niger (32), Plateau (31), Osun (29), Rivers (18), Kaduna (17), Ogun (15), Bayelsa (13), Edo (12), Kano (12), Cross River (9), Bauchi (5), Ondo (3), Adamawa (1), Gombe (1), Imo (1), Kwara (1) and Sokoto (1).
- Six (**6**) deaths were recorded in the last 24 hours in **four** states – Edo (3), Adamawa (1), Bauchi (1) and Kano (1).
- All **36** states in Nigeria, and the FCT, have reported a confirmed case.

STATE OF THE NATION

Figure 1: Map of Nigeria showing 36 states and FCT affected by COVID-19



SITUATION UPDATES

Total (New in the last 24 hours)

SAMPLES TESTED

314,632 (3,903)

CONFIRMED CASES

45,687 (443)

AFFECTED STATES INCLUDING FCT

37

DISCHARGED CASES

32,637 (207)

CONFIRMED FATALITIES

936 (6) – 2.0% CFR

DEMOGRAPHICS

MALE – 29,411 (64%)

FEMALE – 16,276 (36%)

MOST AFFECTED AGE GROUP

31 - 40 (25%)

PERSONS OF INTEREST

11,241 (Total)

11,127 (99% - Exceeded Follow Up)

PROVENANCE

TRAVEL HISTORY – 847 (2%)

CONTACTS – 11,443 (25%)

UNKNOWN EXPOSURE – 33,397 (73%)

GLOBAL UPDATES

TOTAL NUMBER OF CASES

18,902,735 (709,511 deaths)

COUNTRIES & TERRITORIES AFFECTED*

214

*Excluding the 2 International Conveyance

GENERAL FACT SHEET – DATA AS AT 7th AUGUST 2020

Table 1: States with reported laboratory-confirmed COVID-19 cases, recoveries, deaths and days since last reported case

STATES	CONFIRMED CASES		DISCHARGED CASES		DEATHS		TOTAL ACTIVE CASES	DAYS SINCE LAST REPORTED CASE
	TOTAL	NEW	TOTAL	NEW	TOTAL	NEW		
Lagos	15,697	70	13,119	0	192	0	2,386	0
FCT	4,301	60	1,237	6	45	0	3,019	0
Oyo	2,843	18	1,402	0	31	0	1,410	0
Edo	2,367	27	2,085	12	96	3	186	0
Rivers	1,938	27	1,609	18	53	0	276	0
Kano	1,609	1	1,303	12	54	1	252	0
Delta	1,557	0	1,404	0	43	0	110	1
Kaduna	1,550	20	1,352	17	12	0	186	0
Ogun	1,430	2	1,219	15	24	0	187	0
Plateau	1,397	103	629	31	20	0	748	0
Ondo	1,278	35	654	3	27	0	597	0
Enugu	880	0	485	0	18	0	377	2
Ebonyi	838	0	793	0	26	0	19	1
Kwara	826	11	343	1	21	0	462	0
Katsina	746	0	457	0	24	0	265	4
Borno	652	18	569	0	35	0	48	0
Gombe	626	6	530	1	23	0	73	0
Abia	625	0	517	0	5	0	103	2
Osun	605	19	329	29	13	0	263	0
Bauchi	576	2	526	5	14	1	36	0
Imo	476	4	148	1	10	0	318	0
Nasarawa	367	7	223	0	8	0	136	0
Benue	356	0	64	0	7	0	285	5
Bayelsa	346	4	303	13	21	0	22	0
Jigawa	322	0	308	0	11	0	3	22
Akwa Ibom	234	0	171	0	8	0	55	1
Niger	226	0	165	32	12	0	49	3
Adamawa	185	9	86	1	12	1	87	0
Ekiti	159	0	76	0	2	0	81	1
Sokoto	154	0	138	1	16	0	0	13
Anambra	142	0	83	0	18	0	41	2
Kebbi	90	0	82	0	8	0	0	17
Zamfara	77	0	71	0	5	0	1	20
Taraba	72	0	55	0	4	0	13	3
Cross River	68	0	42	9	8	0	18	2
Yobe	67	0	57	0	8	0	2	8
Kogi	5	0	3	0	2	0	0	35
Total	45,687	443	32,637	207	936	6	12,114	

States, including FCT, are arranged in descending order by number of total confirmed cases and then alphabetical order

SELECTED CHARTS

Figure 2: Daily Epidemic Curve of Confirmed Cases (WK9 – WK32)

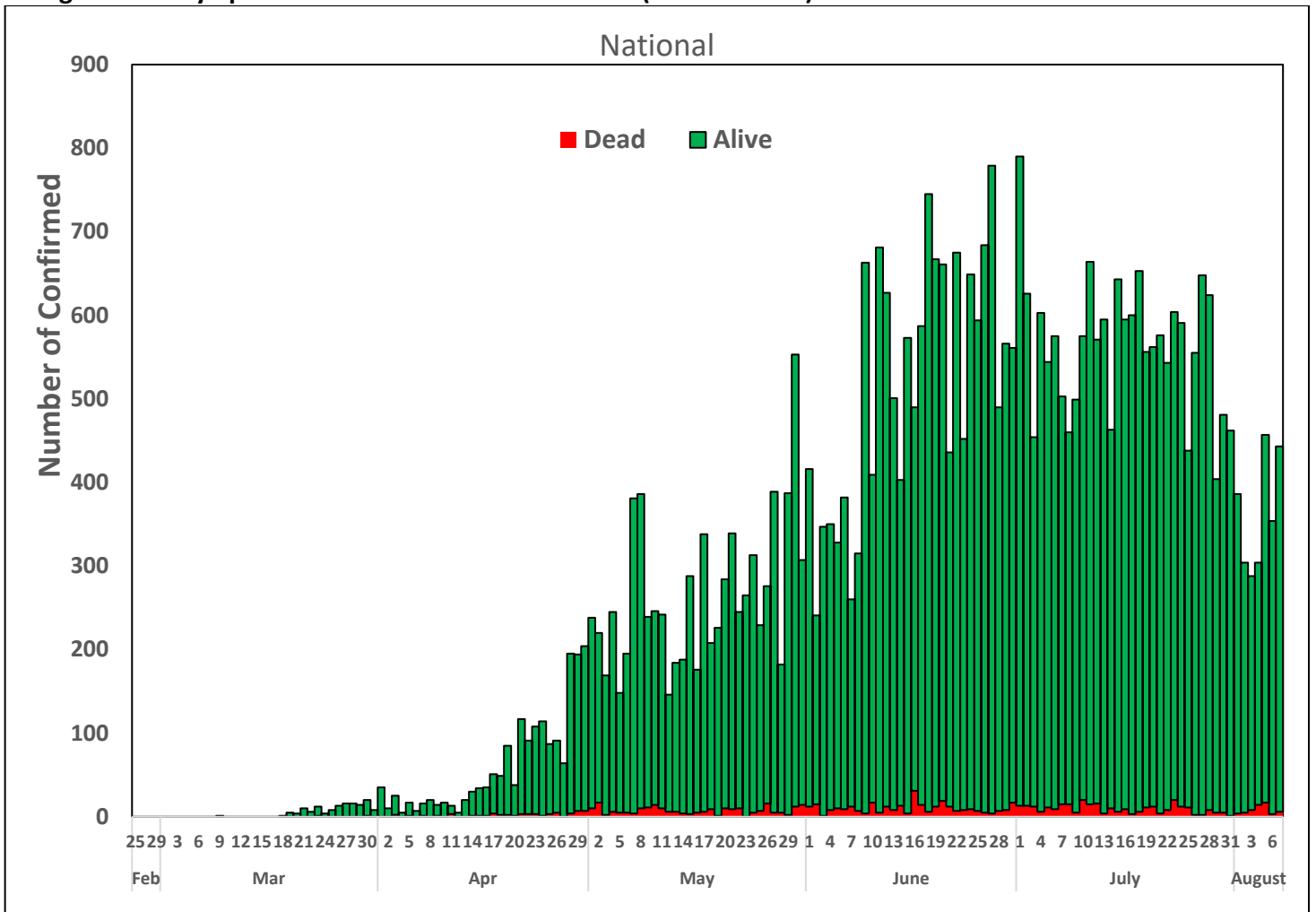
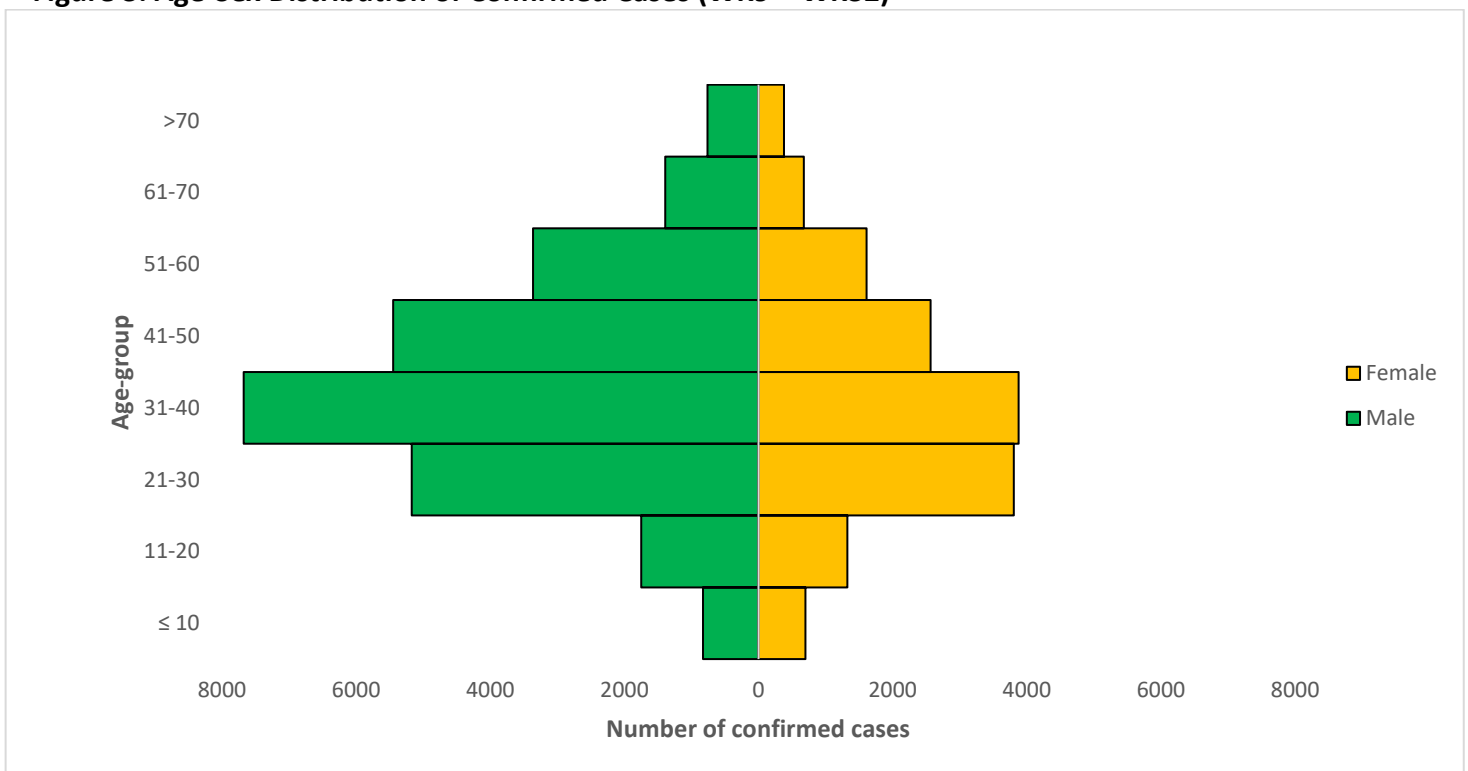


Figure 3: Age-Sex Distribution of Confirmed Cases (WK9 – WK32)



PREPAREDNESS

Since the confirmation of the first case on 27th February 2020, the NCDC has released advisories and statements to help Nigerians and affected groups in particular to respond to the pandemic

- NCDC has launched an online course on [Infection, Prevention and Control \(IPC\) for COVID-19](#) NCDC eLearning platform
- Ahead of forthcoming elections in the country, NCDC has issued [Guidelines for Conducting Elections During the COVID-19 Outbreak in Nigeria](#).
- To protect our elders, and those with pre-existing medical conditions, NCDC has issued an [Advisory for Vulnerable Groups](#).
- NCDC has released [guidelines on the re-opening of places for worship](#).
- NCDC has released [Strategies to Improve Surveillance for COVID-19 Guidance for States](#)
- The Nigeria Police Force has released COVID-19 operational guidelines for the [Police and other Law Enforcement Agencies in Nigeria](#)
- Guidelines have been issued for the [safe transportation of remains of persons suspected or confirmed to have died of COVID-19](#)
- Information on diagnostics of the COVID-19 virus can be found in our [detailed FAQ document](#).
- To increase our testing capacity, NCDC has issued guidelines for the [integration of private labs](#).
- Guidelines for [businesses and employers](#) have been updated.
- NCDC has updated its [case definition](#) , [community case definition](#) and [case management guide](#).
- NCDC releases periodic [public health advisories](#) to Nigerians on the COVID-19 disease.
- To adhere to post-lockdown measures, NCDC has released an [advisory on the use of face masks](#), as well as information on the [Use of Cloth face masks](#) and [how to make your cloth face masks](#).
- NCDC has released guidelines for the [management of pregnant women and nursing mothers](#) during the pandemic.
- To address burials of loved ones who die from COVID-19, guidelines have been issued to advise on the [management of dead bodies](#).
- For health centres managing cases, the following documents have been released- a guideline for the [Rational Use of Personal Protective Equipment in the care of COVID-19 cases](#).
- As part of plans to increase the testing capacity of the country, the NCDC published a [National Strategy to Scale Up Access to Coronavirus Disease Testing in Nigeria](#) document.
- The Presidential Task Force has published policies and announcements on COVID-19 [available on the website of the Presidency](#) – including presidential addresses, task force updates and information on livelihood and economic support.

RESPONSE

On 28th February 2020, a multi-sectoral Emergency Operations Centre (EOC) was activated at Level 3 – the highest emergency level in Nigeria –led by NCDC in close coordination with the State Public Health EOCs (PHEOC).

- **Received a total of 37 Persons of Interest (POIs)/returnees on the 5th of August 2020, from Sharjah, United Arab Emirate**
- **All POIs/returnees were received, screened and given the travellers kit on arrival at the Nnamdi Azikiwe International Airport Abuja (NAIA)**
- **All returnees were issued COVID-19 test appointment**
- **Trained Infection Prevention and Control (IPC) focal persons from all Catholic Health Services Hospitals in Abuja Archdiocese**
- **Commenced campaign for World Mask Week**
- **Finalised distribution plan for additional supply of response materials, Personal Protective Equipment (PPE) and commodities to all states, including the treatment centres, tertiary hospitals and Primary Health Care (PHC) facilities**
- **Conducted a strategic meeting with data/Surveillance and Outbreak Response Management Analysis System (SORMAS) team on developing and determining short term plan to improve data quality**

- Ongoing optimisation of GeneXpert laboratory in Zamfara State
- Completed the National Training of Trainers (TOT) for case managers from Federal Tertiary Hospitals and Institutions supporting the COVID-19 outbreak response in the North East and North Central States
- Daily engagement of Infection Prevention and Control (IPC) focal persons at state and facility level
- Developed and shared Terms of Reference and Healthcare Associated Infection (HAI) prevention strategy with state IPC teams
- Disseminated weekly priority messages with stakeholders for further dissemination
- Deployed additional Personal Protective Equipment (PPE), sample collection materials and commodities to FCT sample collection Centres
- Finalised plans to commence distribution to the laboratory network across the country
- All education materials can be found via www.covid19.ncdc.gov.ng