



SITUATION REPORT

Nigeria Centre For Disease Control (NCDC)

www.ncdc.gov.ng

PLOT 800 EBITU UKIWE STREET, JABI ABUJA, NIGERIA. TOLL FREE CALL: 0800-970000-10. E: info@ncdc.gov.ng



@NCDCgov

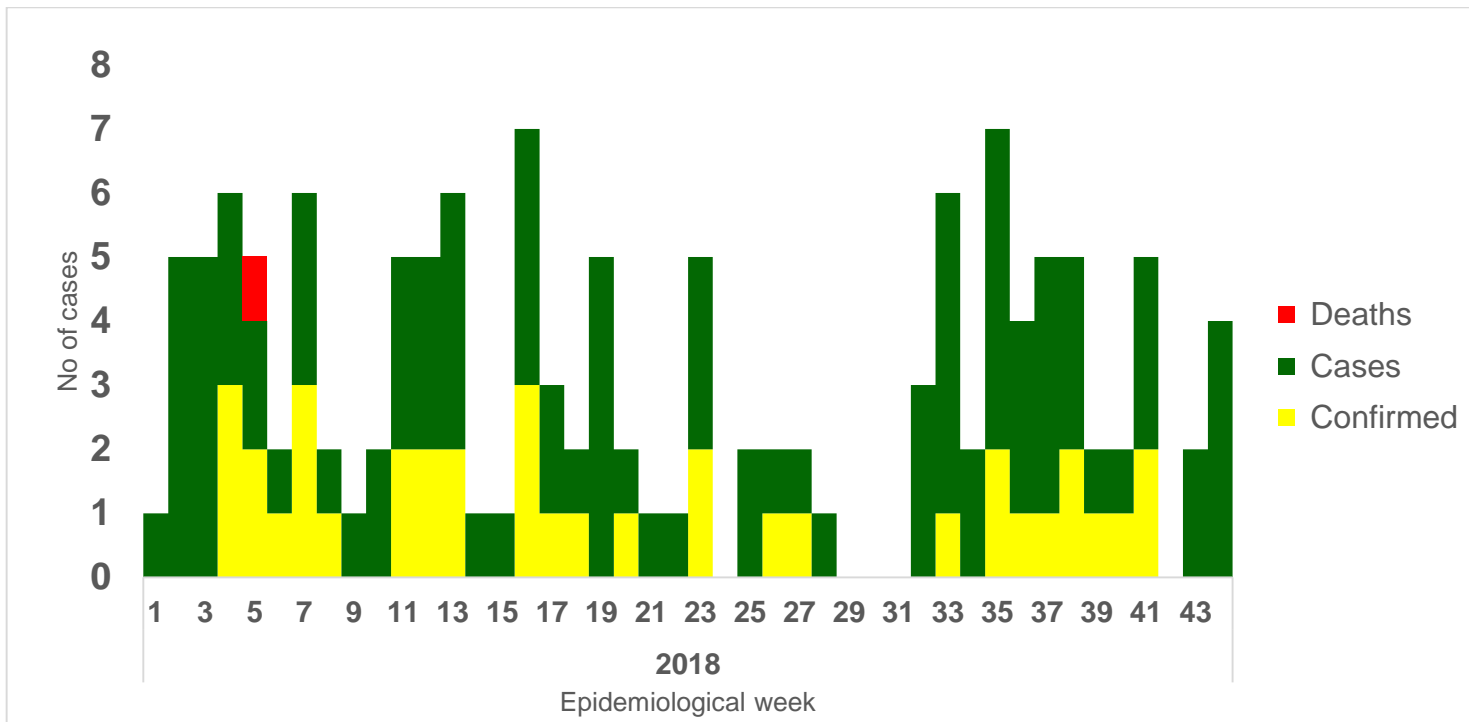
| | |
|-----------------------|--|
| TITLE: | NIGERIA MONKEYPOX OUTBREAK REPORT |
| SERIAL NUMBER: | 027 |
| DATE: | November 13, 2018 |

SUMMARY OF OUTBREAK INDICATORS FOR 2018

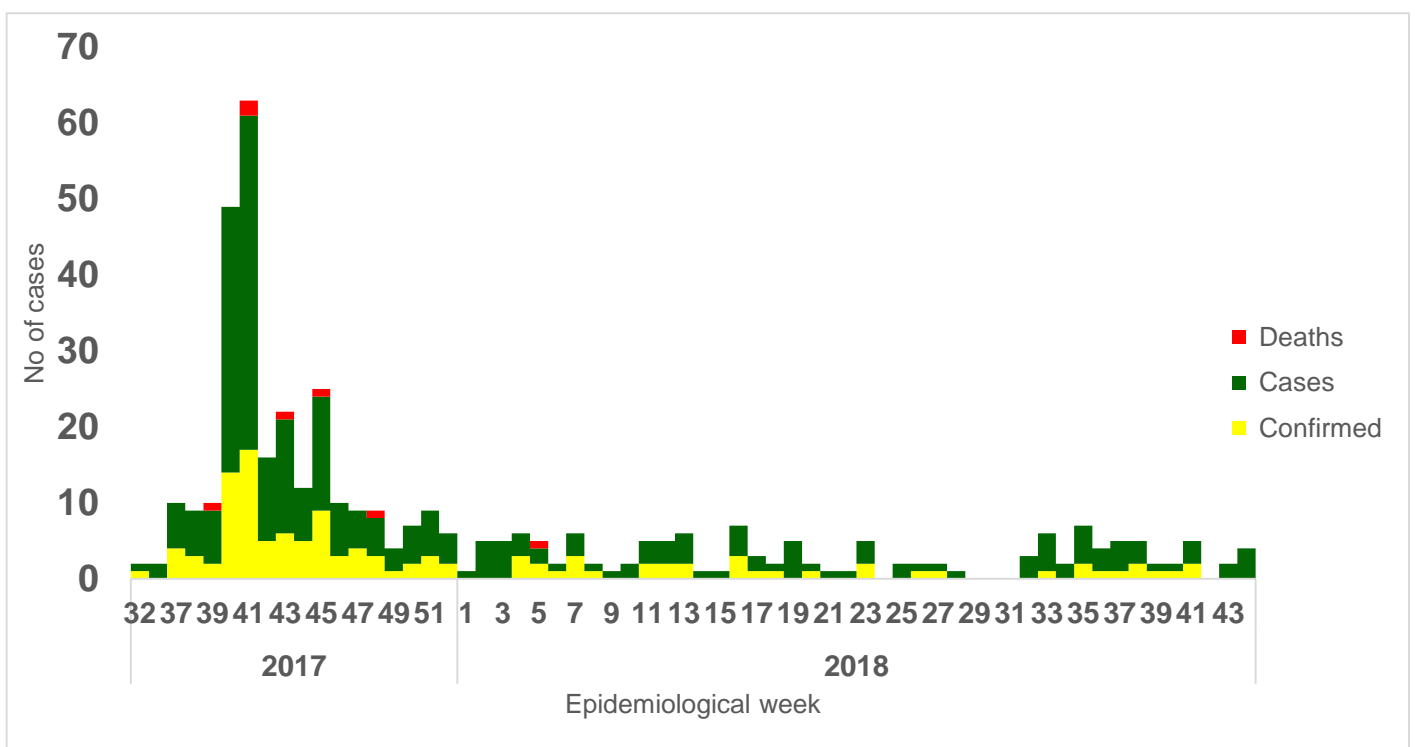
| KEY INDICATORS | NUMBERS |
|---|---------|
| New cases reported | 29 |
| New confirmed | 9 |
| Total number of cases reported in 2018 | 104 |
| Total confirmed cases in 2018 | 38 |
| Total deaths in 2018 | 1 |
| States with at least one Confirmed case (including FCT) | 17 |
| Confirmed health worker infection | 2 |
| Total confirmed cases from onset of outbreak in September, 2017 | 126 |
| Total cases reported from onset of outbreak in September, 2017 | 300 |

HIGHLIGHTS

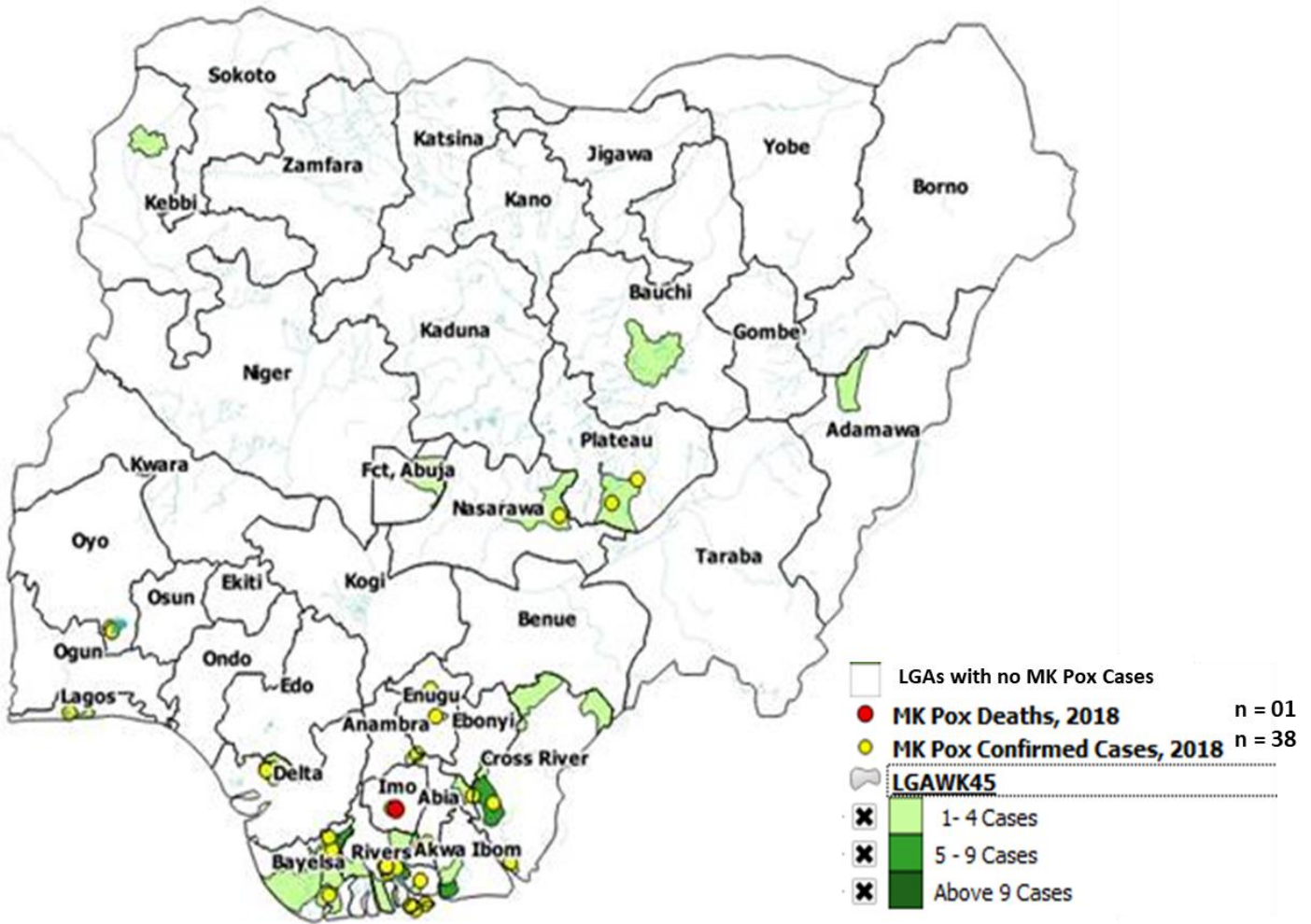
- Nigeria continues to report sporadic cases of monkeypox since the beginning of the outbreak-September 2017
- A total of nine new confirmed cases were recorded in 4 states (Bayelsa 4; Rivers – 2; Delta – 2; Oyo – 1) out of twenty-nine (29) new cases reported to the NCDC in the last one month
- A total of 104 cases have been reported in 2018 from 19 States (Rivers, Akwa-Ibom, Bayelsa, Cross River, Delta, Ebonyi, Edo, Enugu, Imo, Kebbi, Lagos, Nasarawa, Oyo, Abia, Anambra, Bauchi, Plateau, Adamawa and the FCT)
- Of the 104 cases reported, there are 38 confirmed cases, one probable case and one death
- Rivers state and Bayelsa state in South-south Nigeria remain the most affected states
- Males are more affected with a female to male ratio of 1: 3
- The most affected age group in confirmed cases is 21-40 years (Median Age = 31).
- Since the beginning of the outbreak in September 2017, 126 confirmed cases, four probable cases and seven deaths have been recorded
- Genetic sequencing suggests multiple sources of introduction of monkeypox virus into the human population with some evidence of human to human transmission
- Ongoing analysis of findings from monkeypox animal surveillance activities



Nigeria monkeypox cases distribution by Epi week, weeks 1- 45, 2018



Nigeria monkeypox cases distribution; September 2017- 13 November, 2018



Map of Nigeria showing distribution of 2018 monkeypox cases as at 13 November

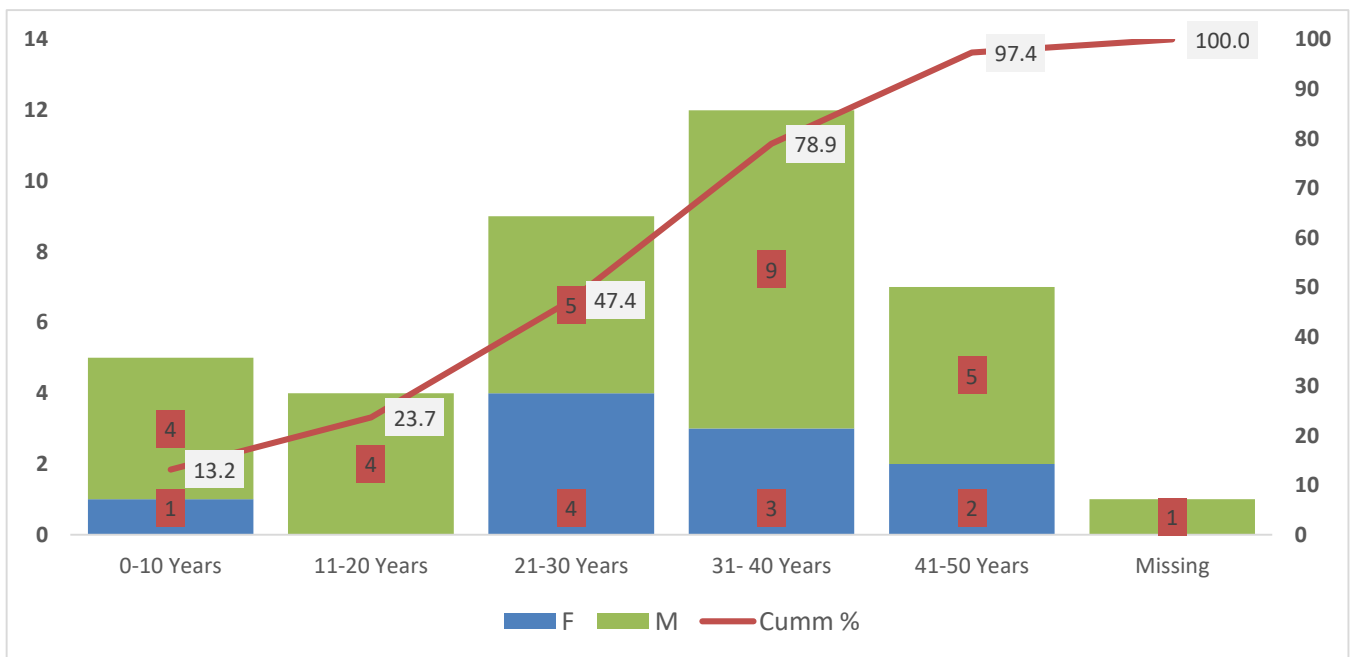


Chart showing Age-Sex distribution of Nigeria confirmed monkeypox cases, 2018

Table1: Monkeypox case distribution by state 2018

| State | No of Cases | Confirmed | Deaths |
|--------------|-------------|-----------|----------|
| Rivers | 37 | 11 | 0 |
| Bayelsa | 10 | 7 | 0 |
| Delta | 7 | 4 | 0 |
| Oyo | 4 | 3 | 0 |
| Abia | 2 | 2 | 0 |
| Cross River | 15 | 2 | 0 |
| Enugu | 2 | 2 | 0 |
| Imo | 2 | 2 | 1 |
| Plateau | 2 | 2 | 0 |
| Anambra | 2 | 1 | 0 |
| Lagos | 3 | 1 | 0 |
| Nasarawa | 1 | 1 | 0 |
| Adamawa | 3 | 0 | 0 |
| Akwa Ibom | 9 | 0 | 0 |
| Bauchi | 1 | 0 | 0 |
| Ebonyi | 1 | 0 | 0 |
| Edo | 1 | 0 | 0 |
| FCT | 1 | 0 | 0 |
| Kebbi | 1 | 0 | 0 |
| Total | 104 | 38 | 1 |

RESPONSE ACTIVITIES

Coordination:

- NCDC in collaboration with partners continues to coordinate monkeypox control activities in the affected states
- Long term national Monkeypox control strategy is being developed

Surveillance

- Enhanced surveillance is ongoing in States
- Animal surveillance to be conducted in other affected states before the end of the year

Laboratory

- Courier service for specimen transportation from all States to the National Reference Laboratory in place and functional
- NCDC is working with partners to ensure sustainable capacity for laboratory testing

Case Management

- Suspected and confirmed cases are managed in designated health facilities in affected States using the National guidelines

Planned activities

- Regional monkeypox training to be cascaded to other affected regions
- Long term National Monkeypox Control strategic meeting