

YELLOW FEVER SITUATION REPORT



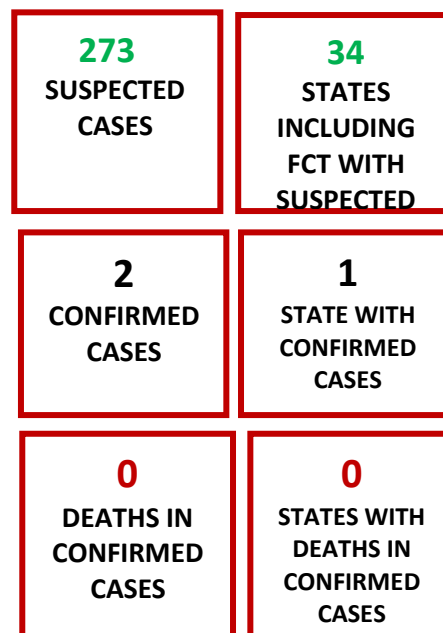
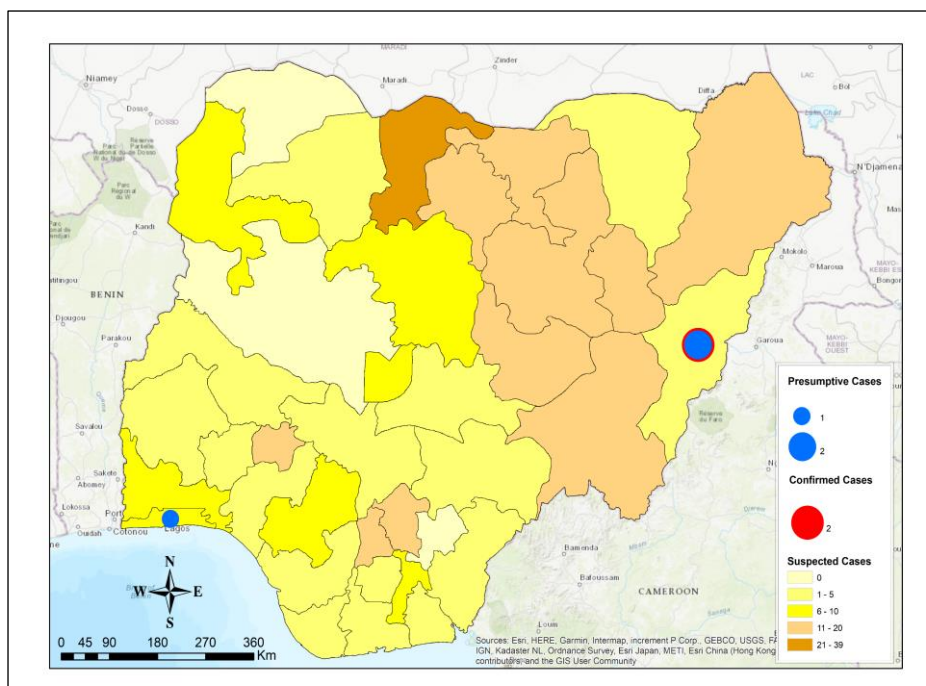
Serial Number: 011	2023 Monthly Sitrep
Epi Week:	44 – 48, 2023
Reporting Month:	November 2023

REPORTING MONTH: NOVEMBER 2023

HIGHLIGHTS

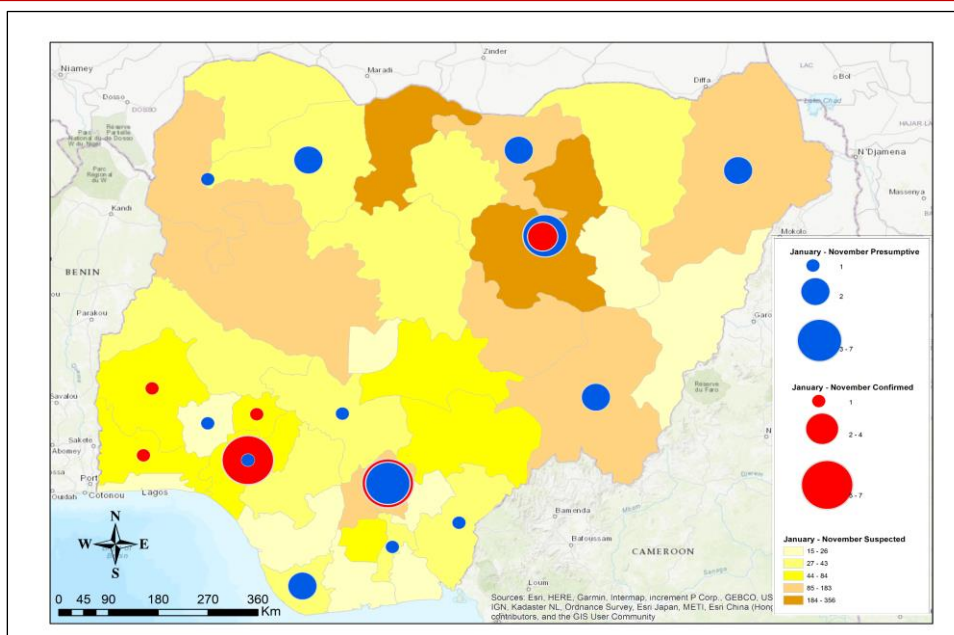
REPORTING PERIOD: 1ST- 30TH November 2023

- The Nigeria Centre for Disease Control and Prevention (NCDC) continues to monitor reports of yellow fever cases in Nigeria.
- A total of 273 suspected cases were reported from 166 Local Government Areas (LGAs) across 34 states.
- The cases were reported from Abia (6), Akwa Ibom (5), Adamawa (3), Anambra (13), Bauchi (19), Bayelsa (2), Benue (3), Borno (18), Cross River (1), Delta (3), Edo (6), Ekiti (15), Enugu (13), FCT (6), Gombe (12), Imo (3), Jigawa (11), Kaduna (6), Kano (12), Katsina (39), Kebbi (6), Kogi (4), Kwara (1), Lagos (7), Nasarawa (5), Ogun (7), Ondo (5), Osun (1), Oyo (4), Plateau (18), Rivers (4), Taraba (11), Yobe (3) and Zamfara (1).
- **Three [3]**, presumptive positive cases were reported from Central Public Health Laboratory (CPHL) Lagos and National Reference Laboratory (NRL) Abuja. These cases were reported from: Lagos -1 [Ikorodu (1)] and Adamawa -2 [Jada (1) and Yola North (1)].
- **Two (2), confirmed cases** were reported from National Reference Laboratory (NRL) Abuja. These cases were reported from: Adamawa -2 [Jada (1) and Yola North (1)]
- No deaths were recorded among suspected cases in the reporting month.



CUMULATIVE FOR 1ST JANUARY – 30TH NOVEMBER 2023

- Cumulatively from 1st January 2023 – 30th November 2023, a total of 2,617 suspected cases have been reported from 553 LGAs in 36 states including the FCT.
- The cases were reported from Abia (35), Adamawa (15), Akwa Ibom (16), Anambra (97), Bauchi (356), Bayelsa (43), Benue (61), Borno (183), Cross River (40), Delta (19), Ebonyi (16), Edo (32), Ekiti (52), Enugu (140), FCT (26), Gombe (21), Imo (60), Jigawa (127), Kaduna (34), Kano (31), Katsina (241), Kebbi (101), Kogi (38), Kwara (42), Lagos (23), Nasarawa (55), Niger (102), Ogun (73), Ondo (84), Osun (22), Oyo (59), Plateau (109), Rivers (23), Sokoto (37), Taraba (132), Yobe (43) and Zamfara (29).
- **Thirty-five (35)** Presumptive positive cases were reported from: the National Reference Laboratory (NRL) Gaduwa - [13], Central Public Health Laboratory (CPHL) Lagos - [8], Maitama District Hospital (MDH) Abuja - [1], University of Benin Teaching Hospital (UBTH) Benin - [3], University of Nigeria Teaching Hospital (UNTH) Enugu – [8] and Yusuf Dantsoho Memorial Hospital (YDMH) Kaduna – [5]. These cases were reported from: **Kogi -1** [Omala (1)], **Ogun -3** [Obafemi Owode (1), Shagamu (1), Odogbolu (1)], **Ondo -4** [Akure South (2), Ondo East (2)], **Cross River -1** [Yala (1)], **Bayelsa -2** [Yenagoa (2)], **Bauchi -7** [Itas/Gadau (4), Ganjuwa (1), Jama'are (1) and Shira (1)], **Borno -2** [Jere (1), Maiduguri (1)], **Enugu -7** [Igboeze North (6), [Aninri (1)], Abia -1 [Ohafia (1)], **Jigawa -2** [Roni (1), [Gwiwa (1)], **Kebbi -1** [Ngaski (1)], **Taraba -2** [Donga (1), Sardauna (1)] and **Zamfara -2** [Talata Mafara (2)].
- **Thirty-five (35)** Inconclusive cases were recorded from the NRL – [5], CPHL – [15], UBTH [3], UNTH – [7], MDH – [1] and YDMH – [4]. These cases were reported from: Abia [1], Anambra [3], Bauchi [4], Bayelsa [1], Borno [1], Cross River [1], Edo [1], Ekiti [2], Enugu [2], Imo [1], Jigawa [1], Kaduna [1], Kebbi [2], Nasarawa [1], Ogun [1], Ondo [8], Osun [1], and Oyo (3). These samples have been shipped to IP Dakar for confirmation.
- **Twenty-three (23)** confirmed cases have been reported from IP Dakar from: **Adamawa -2** [Jada (1), Yola North (1)], **Anambra -1** [Idemili South (1)], **Bauchi -4** [Jama'are (2), Itas/Gadau (1), Ganjuwa (1)], **Ekiti -1** [Ado Ekiti (1)], **Enugu -7** [Igboeze-North (7)], **Ondo -6** [Akure South (3), Ondo East (2), Akoko North-East (1)], **Ogun -1**[Odogbolu (1)], **Oyo -1**[Akinyele (1)] in the reporting period.
- Nine (9) deaths have been recorded from suspected cases from Bayelsa (1), Benue (3), Ekiti (1), Katsina (1), Niger (1) and Osun (1), Taraba (1), **[CFR = 0.4%]**.
- Male to female ratio for suspected cases was **1.1:1** with males 1,383 (52.9%) and females 1,232 (47.1%)
- Seventy-six percent (76%) of cases were predominantly aged 30 years and below.
- Two hundred and forty-five (9.4%) of 2,617 suspected cases received at least one dose of the yellow fever vaccine.
- The NCDC is coordinating response activities through the National Multi-agency Yellow Fever Technical Working Group (YF TWG).



2,617 SUSPECTED CASES	36 + FCT STATES WITH SUSPECTED CASES
23 CONFIRMED CASES	8 STATE WITH CONFIRMED CASES
0 DEATHS IN CONFIRMED CASES	0 STATES WITH DEATHS IN CONFIRMED CASES

Table 1: Summary of yellow fever cases in Nigeria from January – November 2023

State	# Suspected Cases	# LGAs with suspected cases	# LGAs with confirmed cases	Laboratory Results					Deaths	
				Samples positive (IgM) &	LGAs with positive (IgM) &	Confirmed Cases (PCR)	Confirmed Case	Total Confirmed Cases	# Deaths among Confirmed Cases	# Deaths among All Cases
Abia	35	12	-	2	2	-	-	-	-	-
Adamawa	15	8	2	2	2	1	1	2	-	-
Akwa Ibom	16	11	-	-	-	-	-	-	-	-
Anambra	97	19	1	3	3	-	1	1	-	-
Bauchi	356	18	3	11	5	-	4	4	-	-
Bayelsa	43	8	-	3	2	-	-	-	-	1
Benue	61	20	-	-	-	-	-	-	-	3
Borno	183	25	-	3	3	-	-	-	-	-
Cross River	40	17	-	2	2	-	-	-	-	-
Delta	19	13	-	-	-	-	-	-	-	-
Ebonyi	16	9	-	-	-	-	-	-	-	-
Edo	32	15	-	1	1	-	-	-	-	-
Ekiti	52	14	1	2	1	-	1	1	-	1
Enugu	140	16	1	9	2	-	7	7	-	-
FCT Abuja	26	4	-	-	-	-	-	-	-	-
Gombe	21	9	-	-	-	-	-	-	-	-
Imo	60	20	-	1	1	-	-	-	-	-
Jigawa	127	23	-	3	2	-	-	-	-	-
Kaduna	34	15	-	1	1	-	-	-	-	-
Kano	31	15	-	-	-	-	-	-	-	-
Katsina	241	32	-	-	-	-	-	-	-	1
Kebbi	101	19	-	3	2	-	-	-	-	-
Kogi	38	14	-	1	1	-	-	-	-	-
Kwara	42	13	-	-	-	-	-	-	-	-
Lagos	23	12	-	1	1	-	-	-	-	-
Nasarawa	55	11	-	1	1	-	-	-	-	-
Niger	102	17	-	-	-	-	-	-	-	1
Ogun	73	15	1	4	3	-	1	1	-	-
Ondo	84	14	4	12	6	-	6	6	-	-
Osun	22	14	-	1	1	-	-	-	-	1
Oyo	59	22	1	3	3	-	1	1	-	-
Plateau	109	16	-	-	-	-	-	-	-	-
Rivers	23	14	-	-	-	-	-	-	-	-
Sokoto	37	10	-	-	-	-	-	-	-	-
Taraba	132	16	-	2	2	-	-	-	-	1
Yobe	43	14	-	-	-	-	-	-	-	-
Zamfara	29	9	-	2	1	-	-	-	-	-
TOTAL	2,617	553 (71.4%)	14 (1.8%)	73 (2.8%)	48 (6.2%)	1 (0.04%)	22 (0.8%)	23 (0.9%)	0 (0%)	9 (0.3%)

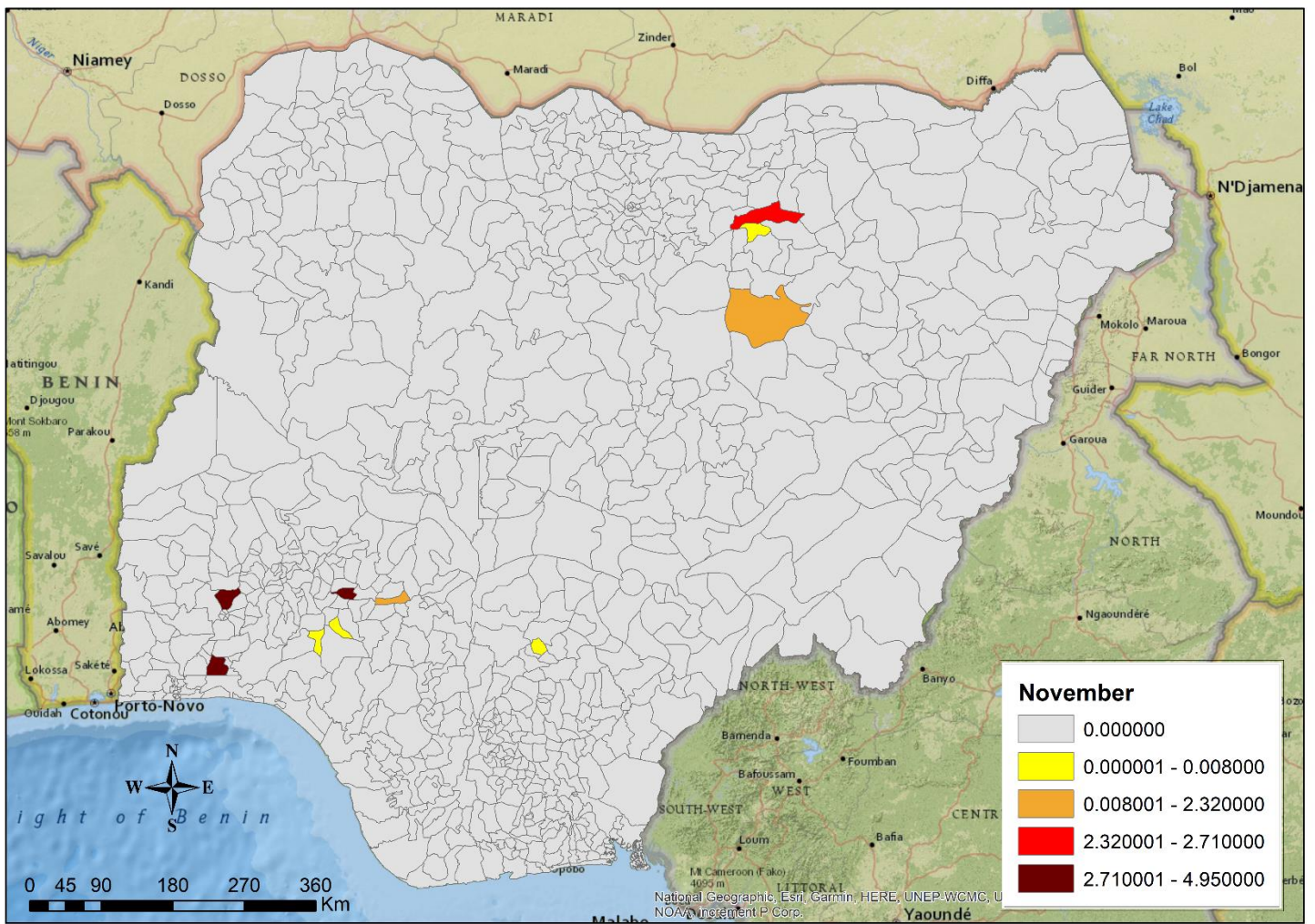


Figure 1: Map of Nigeria showing yellow fever outbreak attack rates in affected LGAs from January–November 2023

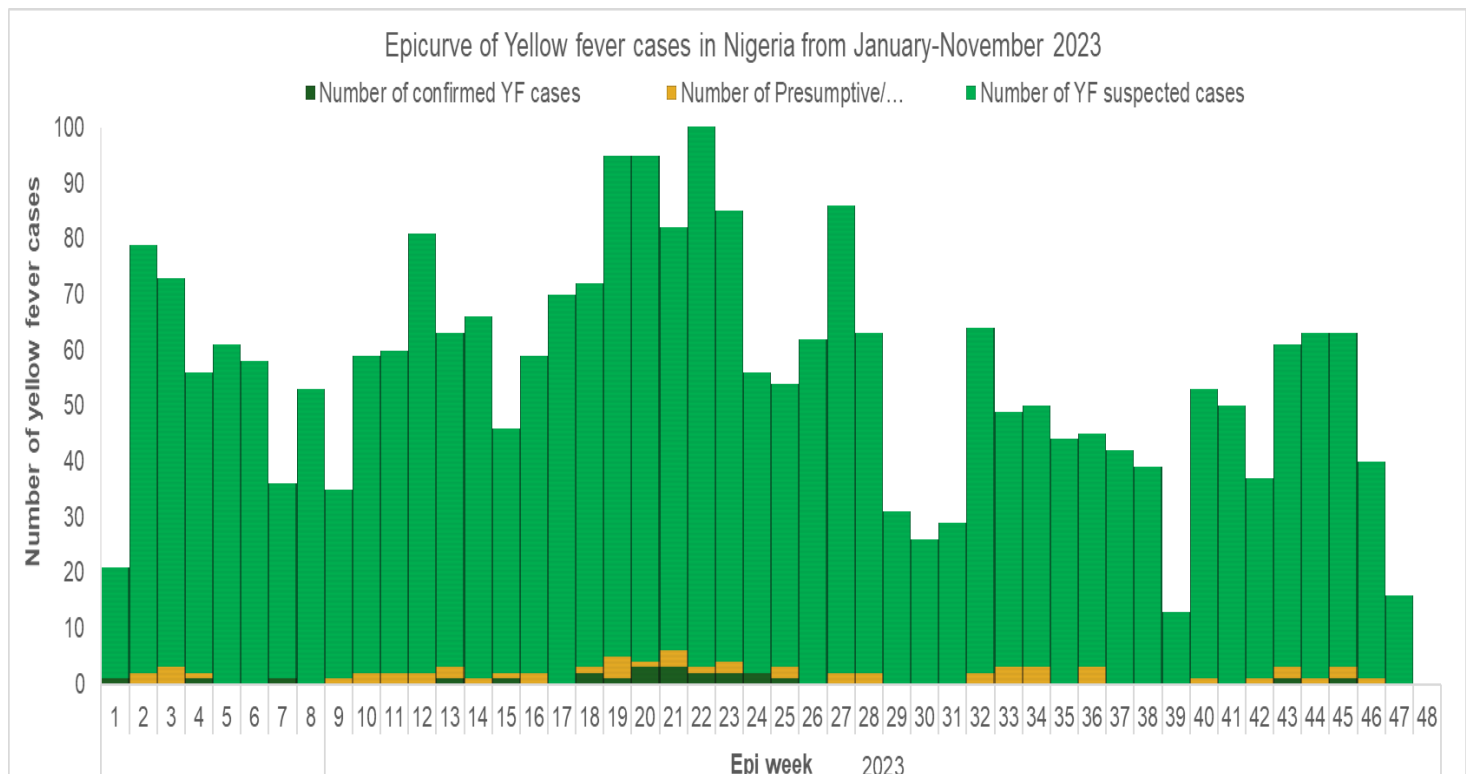


Figure 2: Epicurve of yellow fever cases in Nigeria as at from January–November 2023

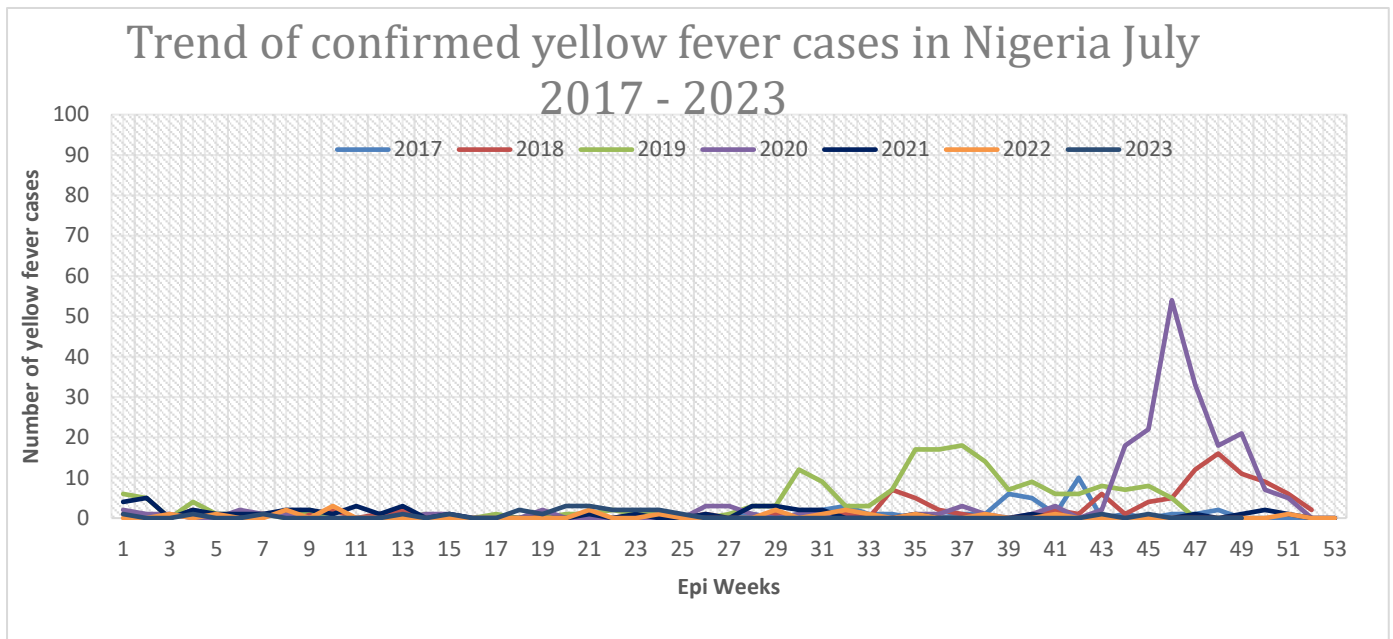


Figure 3: Trend of confirmed yellow fever cases in Nigeria from July 2017–November 2023

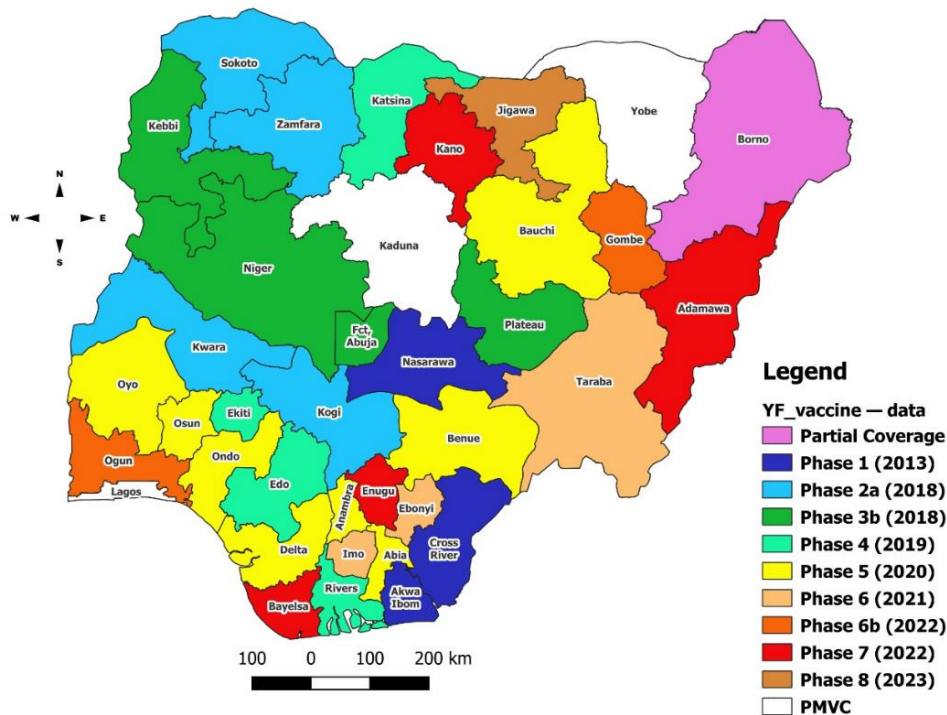


Figure 4: Map of Nigeria showing states and year of implementation of yellow fever mass vaccination campaigns from 2013 - 2023.

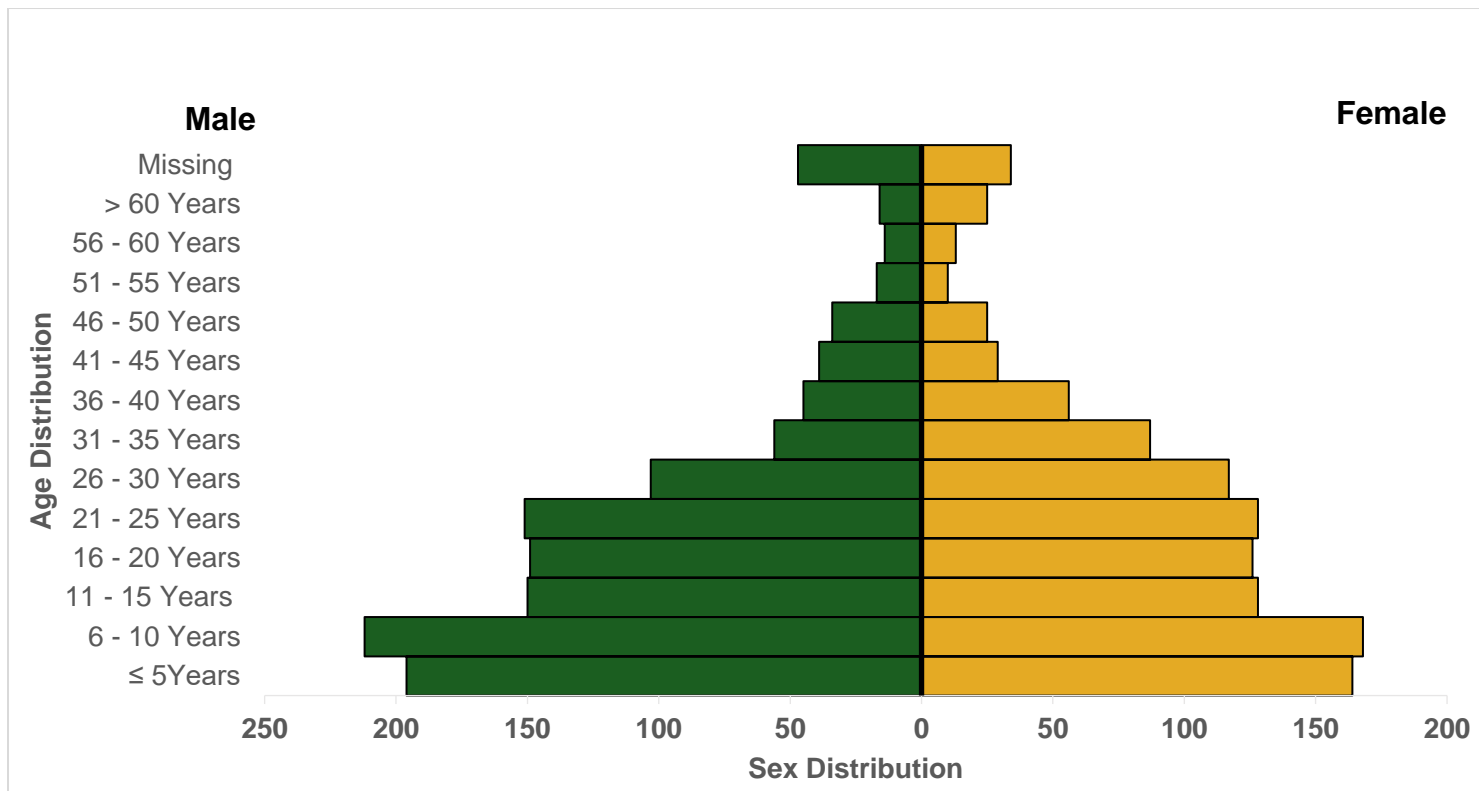


Figure 5: Age and sex distribution of yellow fever cases in Nigeria from January –November 30 2023

SUMMARY OF TWG ACTIVITIES

Coordination

- Yellow fever response activities are coordinated by the NCDC through a multi-agency yellow fever Technical Working Group (YF TWG)
- Off-site support to states with recent confirmed cases from Bauchi, Ekiti, Enugu, Ondo and Ondo States

Epidemiology/Surveillance/Data Management

- Daily monitoring and analysis of surveillance data across the country to guide response activities
- Engagement with State Epidemiologists for regular updates
- Update cases in the Surveillance Outbreak Response Management and Analysis System (SORMAS) platform

Laboratory

- Coordination of yellow fever sample management and transportation from all states to the regional reference laboratories
- Operationalization of Yellow fever Reference Laboratory at University of Maiduguri Teaching Hospital (UMTH) Maiduguri, Borno State
- Regular testing of yellow fever samples in all the testing laboratories

Case Management

- Ongoing plan for capacity building of 32 tertiary health care workers in 4 states in Southeast on IDSR and yellow fever case identification, management, and reporting

Vaccination - Led by NPHCDA

- Supported implementation of yellow fever Preventive Mass Vaccination Campaign (PMVC) phase 7, 2023 in Jigawa, Kaduna and some LGAs in Borno State

Risk Communication

- Review of Information Education and Communication (IEC) jingles in local languages (Hausa, Igbo and Yoruba)
- Ongoing daily media monitoring across social and traditional media platforms

NEXT STEPS

Coordination

- Plan to continue with the capacity building of healthcare workers from selected tertiary hospitals from other geopolitical zones
- Printing and distribution of additional copies of yellow fever preparedness and response guidelines
- Mapping of yellow fever hotspots
- Development of National yellow fever workplan

Epidemiology/Surveillance/Data Management

- Continue monitoring and analysis of YF surveillance data across all states and FCT to guide response
- Work with Surveillance outbreak and response management and analysis system (SORMAS) team to improve data quality

Case Management

- Strengthen the case management capacity at the states to support detection, reporting and response during outbreak

Laboratory

- Supportive supervision of all the yellow fever testing laboratories
- Continue coordination of prompt transportation of samples and availability of reagents in the testing laboratories
- Ongoing plan to reactivate the YF testing Laboratory for the Northeast
- Follow up with IP Dakar for timely release of results
- Ensured availability of reagents and consumables in all testing laboratories
- Establishment of a yellow fever biorepository bank to store yellow fever-positive samples
- Genomic sequencing of yellow fever-positive samples

Vaccination - Led by NPHCDA

- Support implementation plans for 2023 yellow fever PMVC in Jigawa, some targeted LGAs in Borno and ongoing pre-implementation plans for Kaduna
- Follow-up for the report and post-campaign coverage survey of the YF PMVCs implemented

Risk Communication

- Follow up with the distribution plan to disseminate YF information, education, and communication materials including jingles across the states and FCT
- Support capacity building on One Health Risk Communication for media practitioners
- Sensitisation of the media on yellow fever transmission and control measures

Partners

