

# COVID-19 SITUATION REPORT

## SITUATION REPORT 194

Wednesday, 9<sup>th</sup> September 2020



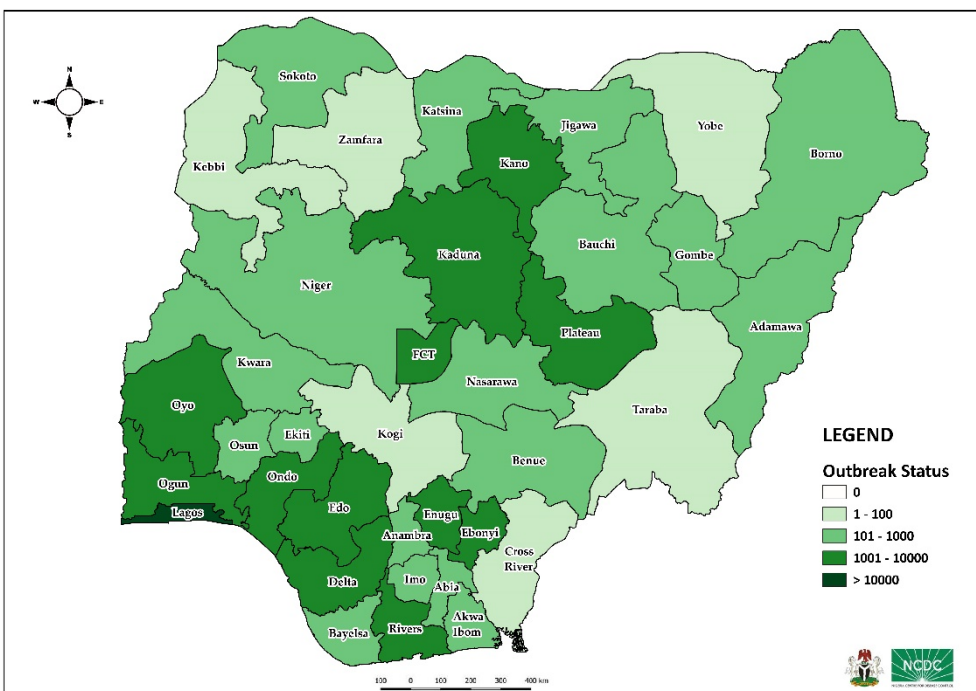
DATA AS REPORTED AND ACCURATE BY NCDC AS AT MIDNIGHT 9<sup>th</sup> SEPTEMBER 2020

### HIGHLIGHTS

- One hundred and seventy-six (**176**) confirmed cases were reported in the last 24 hours from **17** states – FCT (40), Lagos (34), Plateau (26), Enugu (14), Delta (12), Ogun (12), Ondo (9), Oyo (8), Ekiti (6), Ebonyi (4), Adamawa (2), Kwara (2), Nasarawa (2), Rivers (2), Bauchi (1), Edo (1) and Osun (1).
- Two hundred and seventy-six (**276**) discharges have been reported in the last 24 hours in **11** states – Benue (110), Plateau (70), Ondo (42), Delta (13), FCT (13), Rivers (12), Ogun (9), Bauchi (2), Bayelsa (2), Osun (2) and Ekiti (1).
- Three (**3**) deaths were reported in the last 24 hours in **three** states – FCT(1), Ogun (1) and Rivers (1).
- All **36** states in Nigeria, and the FCT, have reported a confirmed case.

### STATE OF THE NATION

Figure 1: Map of Nigeria showing 36 states and FCT affected by COVID-19



### SITUATION UPDATES

Total (New in the last 24 hours)

SAMPLES TESTED

**433,206 (2,494)**

CONFIRMED CASES

**55,632 (176)**

AFFECTED STATES INCLUDING FCT

**37**

DISCHARGED CASES

**43,610 (276)**

CONFIRMED FATALITIES

**1,070 (3) – 1.9% CFR**

DEMOGRAPHICS

MALE – 35,295 (63%)

FEMALE – 20,337 (37%)

MOST AFFECTED AGE GROUP

31 - 40 (25%)

PERSONS OF INTEREST

**11,732 (Total)**

**11,662 (99.4% - Exceeded Follow Up)**

PROVENANCE

TRAVEL HISTORY – 850 (1%)

CONTACTS – 14,112 (24%)

UNKNOWN EXPOSURE – 40,670 (75%)

GLOBAL UPDATES

TOTAL NUMBER OF CASES

**27,486,960 (894,983 deaths)**

COUNTRIES & TERRITORIES AFFECTED

**216\***

\*Excluding the 2 International Conveyance

## GENERAL FACT SHEET – DATA AS AT 9<sup>th</sup> SEPTEMBER 2020

Table 1: States with reported laboratory-confirmed COVID-19 cases, recoveries, deaths and days since last reported case

STATES	CONFIRMED CASES		DISCHARGED CASES		DEATHS		TOTAL ACTIVE CASES	DAYS SINCE LAST REPORTED CASE
	TOTAL	NEW	TOTAL	NEW	TOTAL	NEW		
Lagos	18,456	34	15,237	0	203	0	3,016	0
FCT	5,375	40	1,637	13	70	1	3,668	0
Oyo	3,209	8	1,961	0	38	0	1,210	0
Plateau	2,954	26	1,879	70	30	0	1,045	0
Edo	2,603	1	2,404	0	100	0	99	0
Kaduna	2,214	0	2,099	0	32	0	83	2
Rivers	2,195	2	2,087	12	59	1	49	0
Delta	1,780	12	1,616	13	48	0	116	0
Kano	1,728	0	1,604	0	54	0	70	2
Ogun	1,715	12	1,648	9	27	1	40	0
Ondo	1,575	9	1,485	42	33	0	57	0
Enugu	1,198	14	1,088	0	21	0	89	0
Ebonyi	1,034	4	986	0	30	0	18	0
Kwara	989	2	794	0	25	0	170	0
Katsina	819	0	457	0	24	0	338	2
Abia	816	0	712	0	8	0	96	2
Osun	803	1	756	2	17	0	30	0
Gombe	746	0	643	0	23	0	80	1
Borno	741	0	703	0	36	0	2	9
Bauchi	671	1	646	2	14	0	11	0
Imo	537	0	211	0	12	0	314	1
Benue	460	0	401	110	9	0	50	8
Nasarawa	443	2	298	0	12	0	133	0
Bayelsa	391	0	365	2	21	0	5	11
Jigawa	322	0	308	0	11	0	3	55
Ekiti	299	6	254	1	5	0	40	0
Akwa Ibom	283	0	247	0	8	0	28	1
Niger	244	0	216	0	12	0	16	5
Adamawa	230	2	180	0	15	0	35	0
Anambra	226	0	181	0	19	0	26	1
Sokoto	159	0	142	0	17	0	0	9
Kebbi	93	0	84	0	8	0	1	12
Taraba	91	0	73	0	6	0	12	2
Cross River	83	0	73	0	8	0	2	6
Zamfara	78	0	73	0	5	0	0	20
Yobe	67	0	59	0	8	0	0	41
Kogi	5	0	3	0	2	0	0	68
<b>Total</b>	<b>55,632</b>	<b>176</b>	<b>43,610</b>	<b>276</b>	<b>1,070</b>	<b>3</b>	<b>10,952</b>	

States, including FCT, are arranged in descending order by number of total confirmed cases and then alphabetical order

# SELECTED CHARTS

Figure 2: Daily Epidemic Curve of Confirmed Cases (WK9 – WK37)

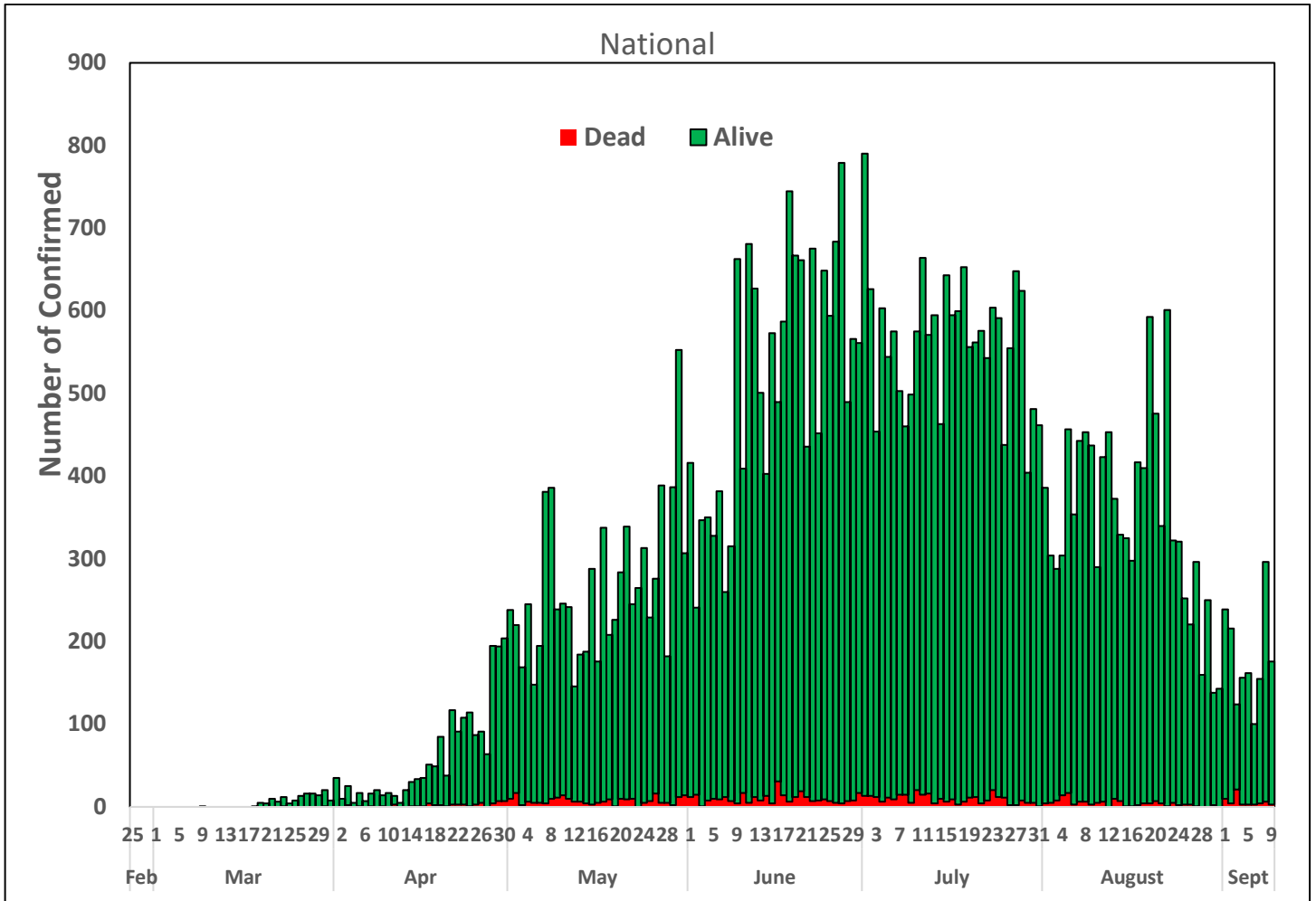
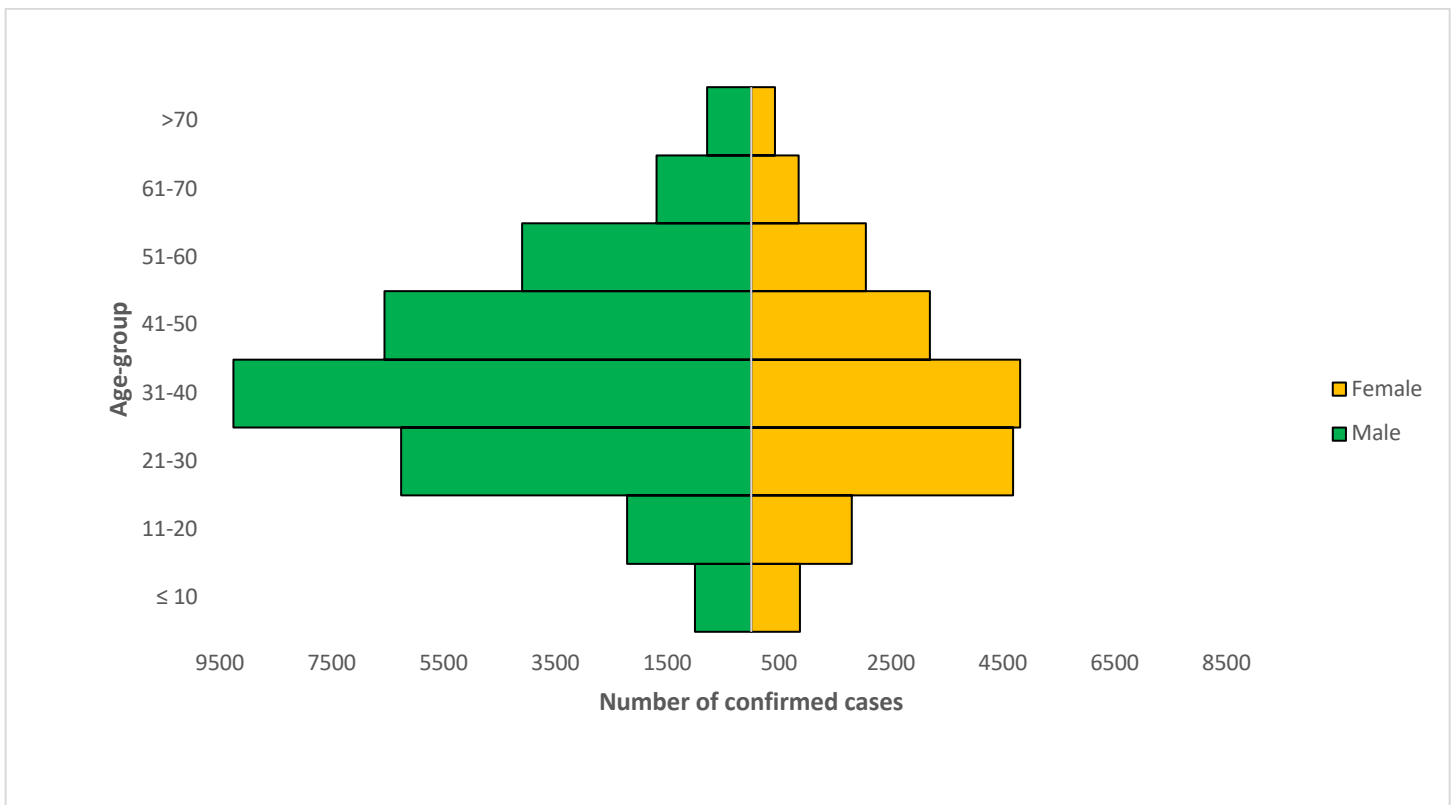


Figure 3: Age-Sex Distribution of Confirmed Cases (WK9 – WK37)



## PREPAREDNESS

Since the confirmation of the first case on 27<sup>th</sup> February 2020, the NCDC has released advisories and statements to help Nigerians and affected groups in particular to respond to the pandemic

- NCDC recently published the first edition of a quick reference guide on setting up sample collection centre - [A step by step guide on setting up a sample collection centre](#)
- NCDC has launched an online course on [Infection, Prevention and Control \(IPC\) for COVID-19](#) NCDC eLearning platform
- Ahead of forthcoming elections in the country, NCDC has issued [Guidelines for Conducting Elections During the COVID-19 Outbreak in Nigeria](#).
- To protect our elders, and those with pre-existing medical conditions, NCDC has issued an [Advisory for Vulnerable Groups](#).
- NCDC has released [guidelines on the re-opening of places for worship](#).
- NCDC has released [Strategies to Improve Surveillance for COVID-19 Guidance for States](#)
- The Nigeria Police Force has released COVID-19 operational guidelines for the [Police and other Law Enforcement Agencies in Nigeria](#)
- Guidelines have been issued for the [safe transportation of remains of persons suspected or confirmed to have died of COVID-19](#)
- Information on diagnostics of the COVID-19 virus can be found in our [detailed FAQ document](#).
- To increase our testing capacity, NCDC has issued guidelines for the [integration of private labs](#).
- Guidelines for [businesses and employers](#) have been updated.
- NCDC has updated its [case definition](#) , [community case definition](#) and [case management guide](#).
- NCDC releases periodic [public health advisories](#) to Nigerians on the COVID-19 disease.
- To adhere to post-lockdown measures, NCDC has released an [advisory on the use of face masks](#), as well as information on the [Use of Cloth face masks](#) and [how to make your cloth face masks](#).
- NCDC has released guidelines for the [management of pregnant women and nursing mothers](#) during the pandemic.
- To address burials of loved ones who die from COVID-19, guidelines have been issued to advise on the [management of dead bodies](#).
- For health centres managing cases, the following documents have been released- a guideline for the [Rational Use of Personal Protective Equipment in the care of COVID-19 cases](#).
- As part of plans to increase the testing capacity of the country, the NCDC published a [National Strategy to Scale Up Access to Coronavirus Disease Testing in Nigeria](#) document.
- The Presidential Task Force has published policies and announcements on COVID-19 [available on the website of the Presidency](#) – including presidential addresses, task force updates and information on livelihood and economic support.

## RESPONSE

On 28<sup>th</sup> February 2020, a multi-sectoral Emergency Operations Centre (EOC) was activated at Level 3 – the highest emergency level in Nigeria –led by NCDC in close coordination with the State Public Health EOCs (PHEOC).

- **Commenced the deployment of Surveillance Outbreak Response Management and Analysis System (SORMAS) tool in Enugu and Abia States**
- **The National Reference Laboratory (NRL), Gaduwa, FCT has been selected as the Regional Reference Sequencing Laboratory (RRSL) for COVID-19 and other emerging diseases by WHO**
- **Commenced testing at Plasveric laboratory in Plateau State using the Abbott platform**
- **Trained Community Health Extension Workers (CHEWs) and Proprietary Patent Medicine Vendors (PPMV) in Yenagoa, Bayelsa State on Infection Prevention and Control (IPC) measures**
- **Ongoing training of correctional facilities to build their capacity on prevention, detection and report of COVID-19**
- **Developed a system for tracking health facilities from hotspot areas accessing online NCDC training package on Infection Prevention and Control (IPC)**

- Collaborated with stakeholders to produce jingles and other behavioural change Information, Education and Communication (IEC) materials to address rumours at the community level
- All education materials can be found via [www.covid19.ncdc.gov.ng](http://www.covid19.ncdc.gov.ng)