



Lassa fever Situation Report

Epi Week 51: 19 – 25 December 2022

Key Points

Table 1: Summary of current week (51), cumulative from Epi week 1–51, 2022 and comparison with previous year (2021)

Reporting Period	Suspected cases	Confirmed cases	Probable cases	Deaths (Confirmed cases)	Case Fatality Ratio (CFR)	States and LGAs affected (Confirmed cases)
Current week (week 51)	147	17	0	1	5.9%	State(s): 6 LGA(s): 9
2022 Cumulative (week 51)	8128	1055	37	184	17.4%	State(s): 27 LGA(s): 111
2021 Cumulative (week 51)	4480	483	5	99	20.5%	State(s): 17 LGA(s): 67

Highlights

- In week 51, the number of new confirmed cases increased from 10 in week 50 2022 to 17 cases. These were reported from Bauchi, Oyo, Edo, Taraba, Ondo and Ebonyi States (Table 3)
- Cumulatively from week 1 to week 51, 2022, 184 deaths have been reported with a case fatality rate (CFR) of 17.4% which is lower than the CFR for the same period in 2021 (20.5%)
- In total for 2022, 27 States have recorded at least one confirmed case across 111 Local Government Areas (Figures 2 and 3)
- Of all confirmed cases, 72% are from Ondo (33%), Edo (25%), and Bauchi (14%) States.
- The predominant age group affected is 21-30 years (Range: 1 to 90 years, Median Age: 30 years). The male-to-female ratio for confirmed cases is 1:0.8 (Figure 4)
- The number of suspected cases has increased compared to that reported for the same period in 2021
- One new Healthcare worker was affected in the reporting week 51
- National Lassa fever multi-partner, multi-sectoral Technical Working Group (TWG) continues to coordinate the response activities at all levels

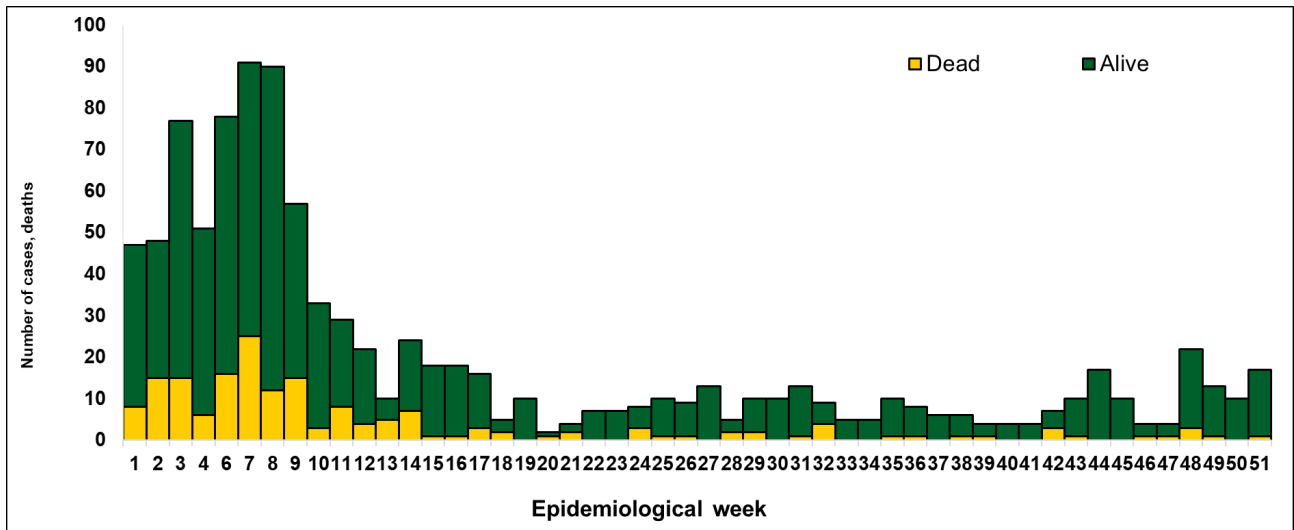


Figure 1. Confirmed Lassa fever cases in Nigeria epidemiological week 1-51, 2022

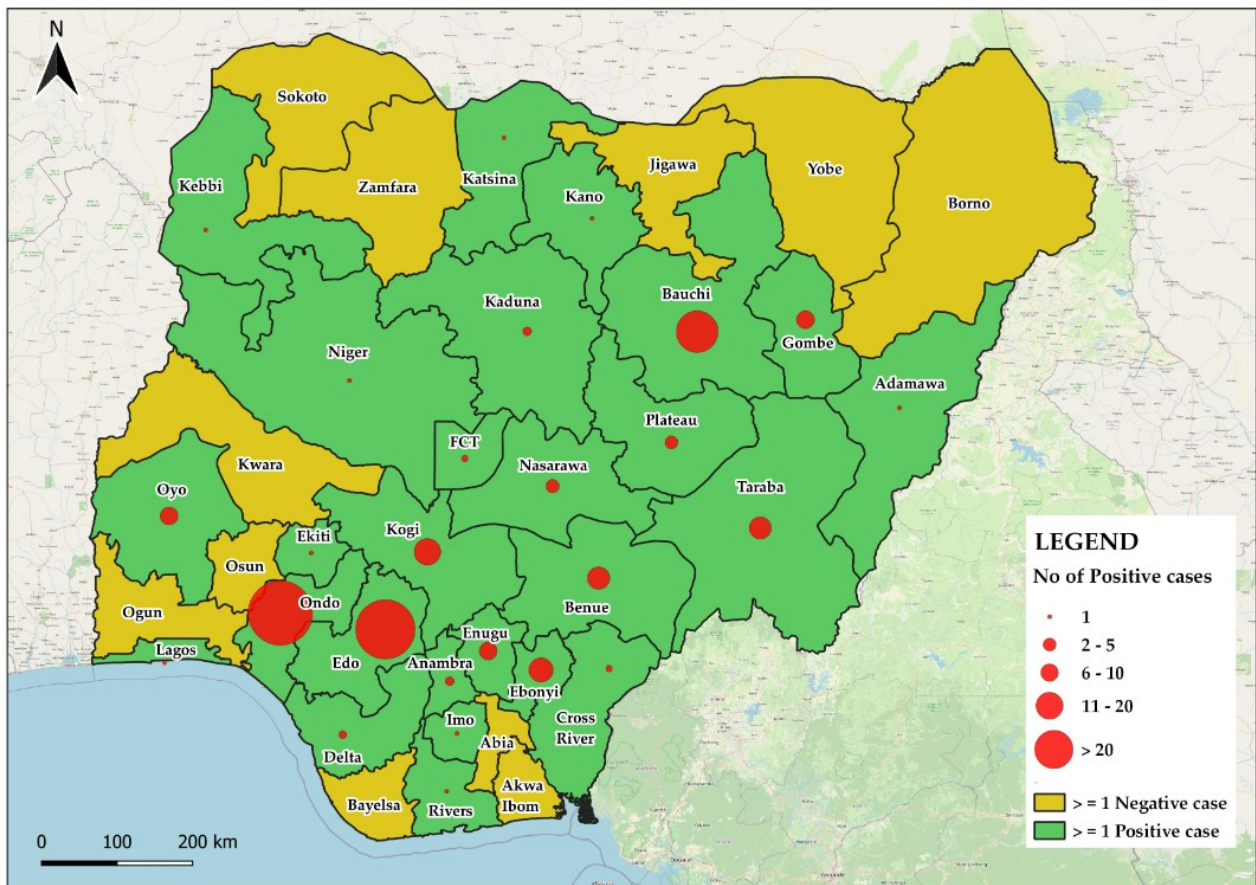


Figure 2. Confirmed Lassa fever cases by States in Nigeria, week 51, 2022

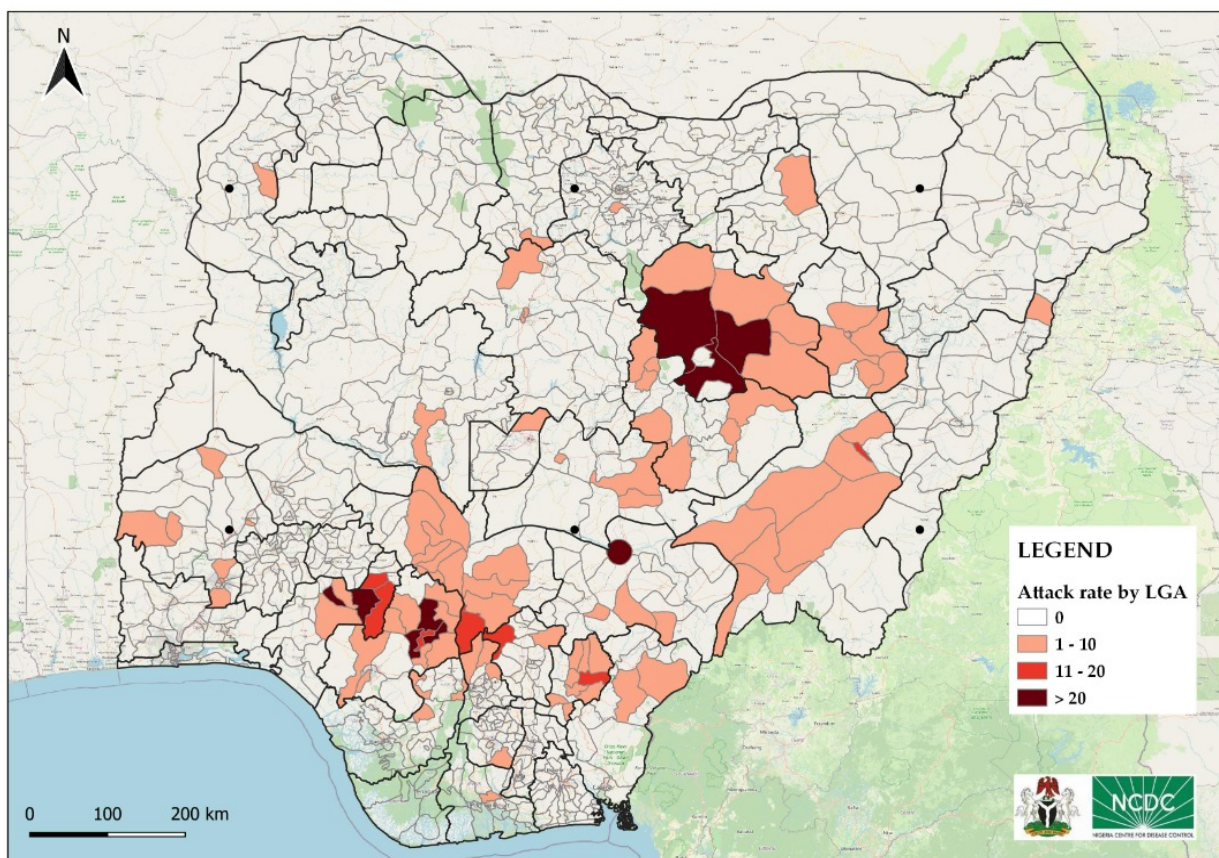


Figure 3. Confirmed Lassa fever rate per 100,000 population for LGAs in Nigeria, week 51, 2022

Table 2: Key indicators for current week 2022 and trend compared to previous week, Nigeria

Symptomatic contacts	Number for current week	Trend from previous week	Cumulative number for 2022
Probable cases	0	↔ ↔	37
Health Care Worker affected	1	↔	56
Cases managed at the treatment centres	17	↔	955
Contact tracing			
Cumulative contact listed	51	↔	3588
Contacts under follow up	89	↔	89
Contacts completed follow up	17	↔	3439
Symptomatic contacts	0	↔ ↔	101
Positive contacts	0	↔ ↔	49
Contacts lost to follow up	0	↔ ↔	11

Key

- ↑ Increase
- ↓ Decrease
- ↔ No difference

Table 3. Weekly and Cumulative number of suspected and confirmed cases for 2022

States	Current week: (Week 51)						Cumulative (Week 1 - 51)				
	Cases				Deaths		Cases				Deaths
	Suspected	Confirmed	Trend	Probable	HCW *	(Confirmed Cases)	Suspected	Confirmed	Probable	HCW *	(Confirmed Cases)
1 Ondo	23	1	▼				1683	348		11	54
2 Edo	54	3	▲				3157	264		3	29
3 Bauchi	35	6	▲		1	1	1043	146		27	15
4 Kogi							142	49			9
5 Ebonyi	6	1	▲				303	46	1	3	20
6 Benue							282	38	2	3	10
7 Taraba	5	2	▲				106	37	3	1	15
8 Oyo	6	4	▲				130	27	14	4	4
9 Gombe							251	24	8	2	8
10 Enugu	1						105	22		1	3
11 Nasarawa	4		▼				141	14	5		6
12 Plateau	5						102	11			
13 Anambra							41	5			1
14 Delta	2						84	4			
15 Kaduna							94	4	3	1	3
16 Cross River							20	4			4
17 FCT	1						64	2			
18 Sokoto							5	1			
19 Imo	1						56	1			
20 Ekiti							4	1			
21 Adamawa							19	1			
22 Niger	1						14	1			
23 Kebbi							8	1			
24 Lagos							51	1			1
25 Kano							41	1			1
26 Katsina							17	1			1
27 Rivers							12	1			
28 Zamfara							5				
29 Akwa Ibom							8				
30 Osun							8		1		
31 Yobe							30				
32 Abia	1						23				
33 Borno							20				
34 Bayelsa							8				
35 Jigawa							9				
36 Ogun							20				
37 Kwara	2						16				
Total	147	17	▲	0	1	1	8122	1055	37	56	184

Key	
▼	Decrease
▲	Increase

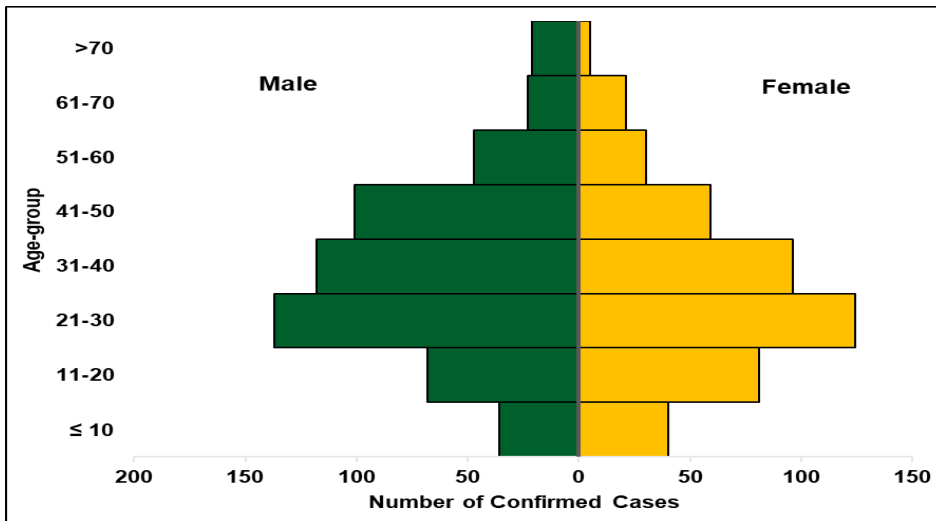


Figure 4. Age and sex pyramid showing the number of confirmed Lassa fever cases for 2022

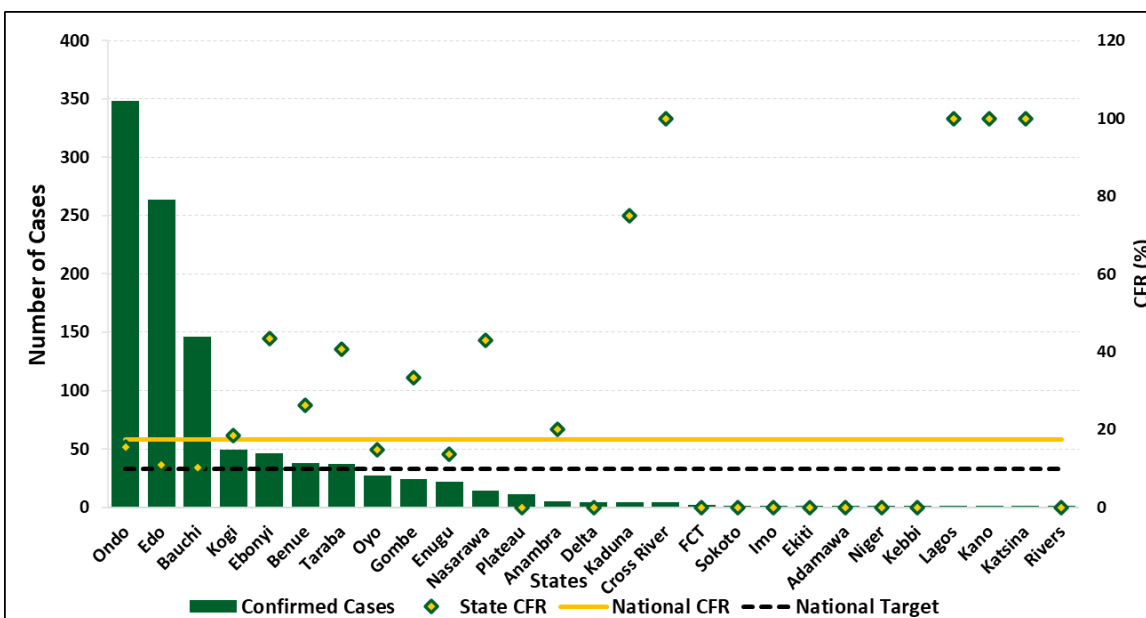


Figure 5: Number of confirmed cases with case fatality rate (CFR) by state week 51, 2022

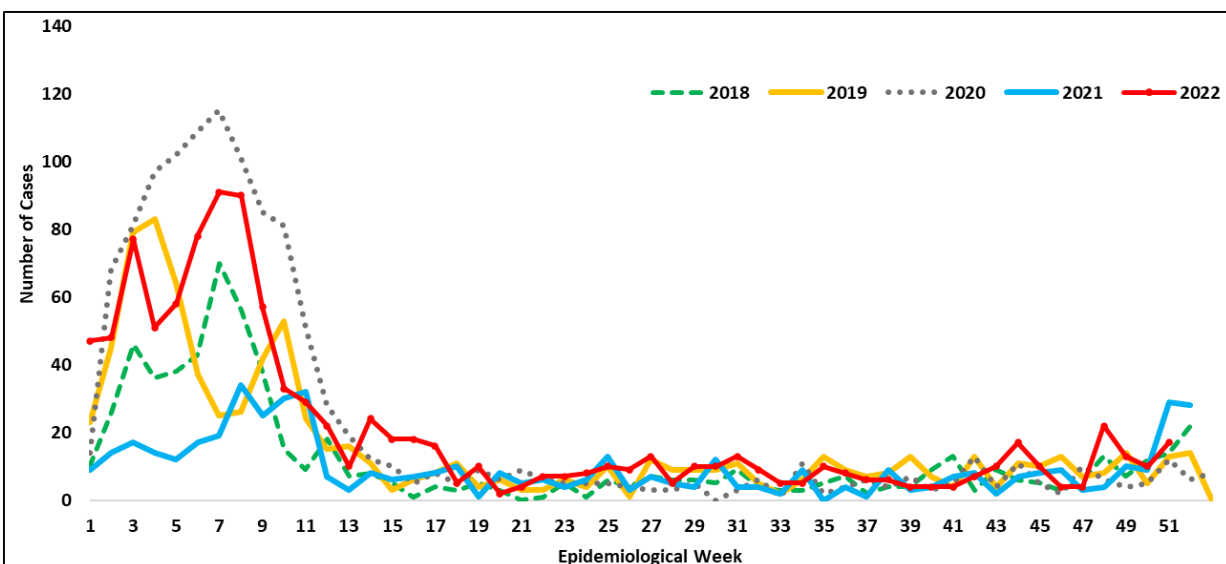


Figure 6: Trend of confirmed cases by epidemiological week, 2018– 2022, Nigeria

Table 5: Response activities

- Conducted Lassa fever testing laboratories network 2022 Action Review meeting
- Conducted the finalization and validation of the Lassa fever 5-year strategic plan
- Collaborated with World Health Organization (WHO), and other West Africa countries in an International Consultation Meeting for development of Global Lassa Fever Clinical Case Management Training Package
- Collaborated with WHO, Coalition for Epidemic Preparedness Innovation (CEPI), and Africa Centre for Disease Control (ACDC) in a workshop towards accelerating the licensure of Lassa fever Vaccines
- Implementation of Nigeria Lassa fever epidemiological Study supported by CEPI
- Implementation of human centred design risk communication activities in most affected States
- Supported Federal Ministry of Health and Irrua Specialist Teaching Hospital Edo State on training of health care workers for clinical management of Lassa fever
- Conducted sub-national Lassa fever surveillance and response intensive workshop
- Deployed of National Rapid Respond Teams (NRRT) to Nasarawa, FCT, Edo, Ondo, Bauchi, Ebonyi, Oyo, Taraba, and Benue to support the response to Lassa fever during the emergency phase
- Supported Lassa fever treatment centre with the engagement of adhoc data clerks to upload case management data on SORMAS
- Continuous distribution of medical response commodities to states and treatment centres across Nigeria
- Risk communications and community engagement activities have been scaled up across states using television, radio, print, social media, and other strategies
- Implementation of Lassa fever environmental response campaign in high burden states by Federal Ministry of Environment
- State Public Health Emergency Operations Centre activated in affected States
- The Eight Lassa fever molecular laboratories in the NCDC network are working full capacity to ensure that all samples are tested, and results provided within the shortest turnaround time
- Confirmed cases are treated at designated treatment centres across the states
- Dissemination of reviewed case management and safe burial practices guidelines
- Dissemination of reviewed Infection Prevention and Control (IPC) guideline and health facility IPC advisory
- The 2022 National Emergency Operations Centre response mode was activated in January 2022 and de-escalated in May 2022
- Lassa fever TWG continues to provide effective multi-sectoral, multi-disciplinary coordination of Lassa fever response
- Lassa fever preparedness assessment carried out for 36 States and FCT at the onset of the outbreak
- Lassa fever alert letters sent to States at the onset of outbreak towards preparedness for the outbreak

Notes on this report**Data Source**

Information for this disease was case based data retrieved from the National Lassa fever Emergency Operations Centre.

Case definitions

- **Suspected case:** any individual presenting with one or more of the following: malaise, fever, headache, sore throat, cough, nausea, vomiting, diarrhoea, myalgia, chest pain, hearing loss and either a. History of contact with excreta or urine of rodents b. History of contact with a probable or confirmed Lassa fever case within a period of 21 days of onset of symptoms OR Any person with inexplicable bleeding/hemorrhagia.
- **Confirmed case:** any suspected case with laboratory confirmation (positive IgM antibody, PCR or virus isolation)
- **Probable case:** any suspected case (see definition above) who died or absconded without collection of specimen for laboratory testing
- **Contact:** Anyone who has been exposed to an infected person, or to an infected person's secretions, excretions, or tissues within three weeks of last contact with a confirmed or probable case of Lassa fever

Calculations

- Case Fatality Rate (CFR) for this disease is reported for confirmed cases only

VIRAL HAEMORRHAGIC FEVER QUICK REFERENCE GUIDE

For social mobilization https://ncdc.gov.ng/themes/common/docs/vhfs/83_1517222929.pdf

For LGA Rapid Response Team https://ncdc.gov.ng/themes/common/docs/vhfs/82_1517222811.pdf

Healthcare worker laboratory https://ncdc.gov.ng/themes/common/docs/vhfs/81_1517222763.pdf

For healthcare workers https://ncdc.gov.ng/themes/common/docs/vhfs/80_1517222586.pdf

For community informant https://ncdc.gov.ng/themes/common/docs/vhfs/79_1517222512.pdf

NATIONAL GUIDELINES FOR LASSA FEVER CASE MANAGEMENT

https://ncdc.gov.ng/themes/common/docs/protocols/92_1547068532.pdf

VIRAL HAEMORRHAGIC FEVER AND RESPONSE PLAN

https://ncdc.gov.ng/themes/common/docs/protocols/24_1502192155.pdf

NATIONAL GUIDELINE FOR INFECTION, PREVENTION AND CONTROL FOR VIRAL HAEMORRHAGIC FEVER

https://ncdc.gov.ng/themes/common/docs/protocols/24_1502192155.pdf

INFROMATION RESOURCE

Nigeria Centre for Disease Control: www.ncdc.gov.ng