

# YELLOW FEVER SITUATION REPORT



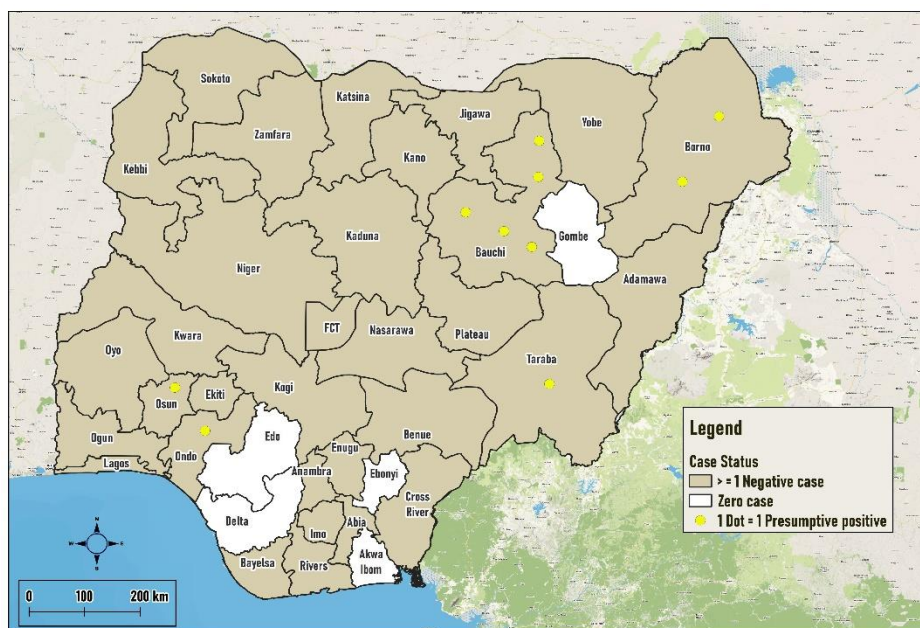
Serial Number: 010	December 2022 Monthly Sitrep
Epi Week:	48 - 52 as at 31 <sup>th</sup> December 2022
Reporting Month:	December 2022

REPORTING MONTH: DECEMBER 2022

## HIGHLIGHTS

### REPORTING PERIOD: 1<sup>st</sup>– 31<sup>st</sup> DECEMBER 2022

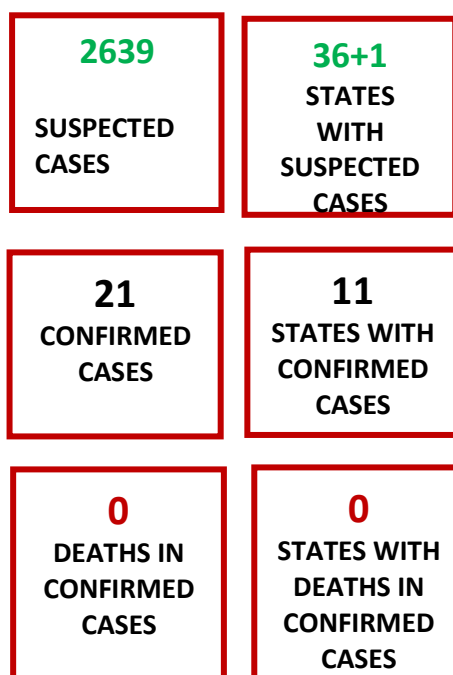
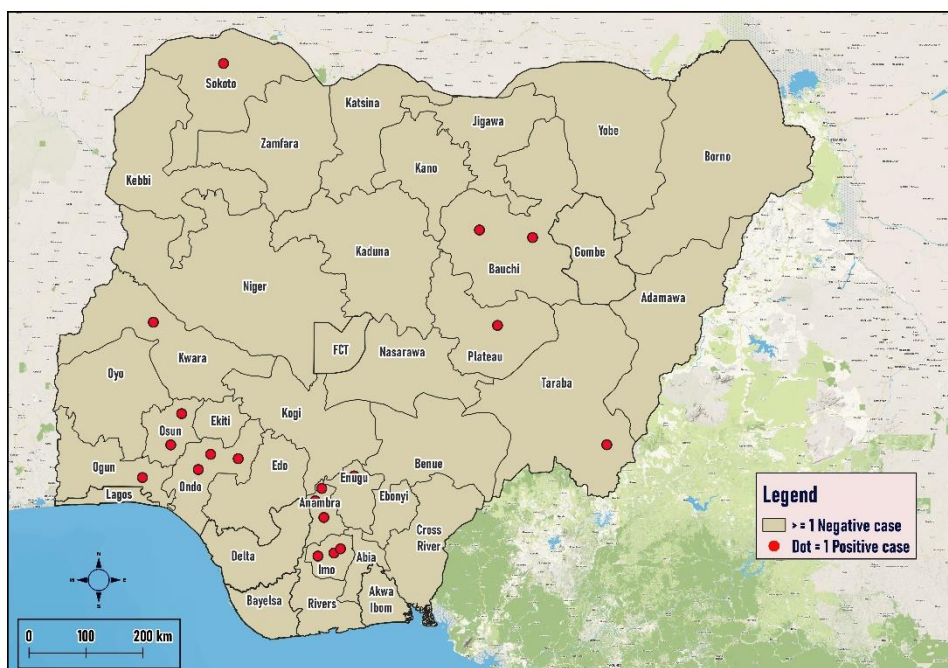
- The Nigeria Centre for Disease Control and Prevention (NCDC) continues to monitor reports of yellow fever cases in Nigeria.
- A total of 289 suspected cases were reported from 150 Local Government Areas (LGAs) across 30 states including the FCT: Abia (6), Adamawa (2), Anambra (5), Bauchi (61), Bayelsa (4), Benue (1), Borno (16), Cross River (2), Ekiti (8), Enugu (17), FCT (1), Imo (5), Jigawa (12), Kaduna (4), Kano (2), Katsina (8), Kebbi (26), Kogi (3), Kwara (15), Nasarawa (1), Niger (10), Ogun (8), Ondo (16), Osun (7), Oyo (1), Plateau (2), Rivers (2), Sokoto (7) Taraba (11), and Yobe (26).
- Twelve (12) Presumptive positive cases were reported from the National Reference Laboratory [9] and Central Public Health Laboratory Lagos [3] within the reporting month. These cases were reported from: **Bauchi (5)** [Damban-2, Kirfi-1, Zaki-1, Itas/Gadua-1], **Borno (3)** [Kala/Balge-(2), Bama (1)], **Taraba (1)** [Bali-1], **Ondo-2** (Akure South) and **Osun-1** (Ejigbo).
- Two (2) Inconclusive cases were recorded from the National Reference Laboratory (NRL) within the reporting month. These cases were from: Yobe (1) and Taraba (1) States.
- One confirmed case from Institut Pasteur (IP) Dakar. The case was from Ejigbo LGA state
- No death was recorded among suspected and confirmed cases in the reporting month.



<b>289</b> SUSPECTED CASES	<b>30</b> STATES WITH SUSPECTED CASES
<b>0</b> CONFIRMED CASE	<b>0</b> STATE WITH CONFIRMED CASE
<b>0</b> DEATHS IN CONFIRMED CASES	<b>0</b> STATES WITH DEATHS IN CONFIRMED CASES

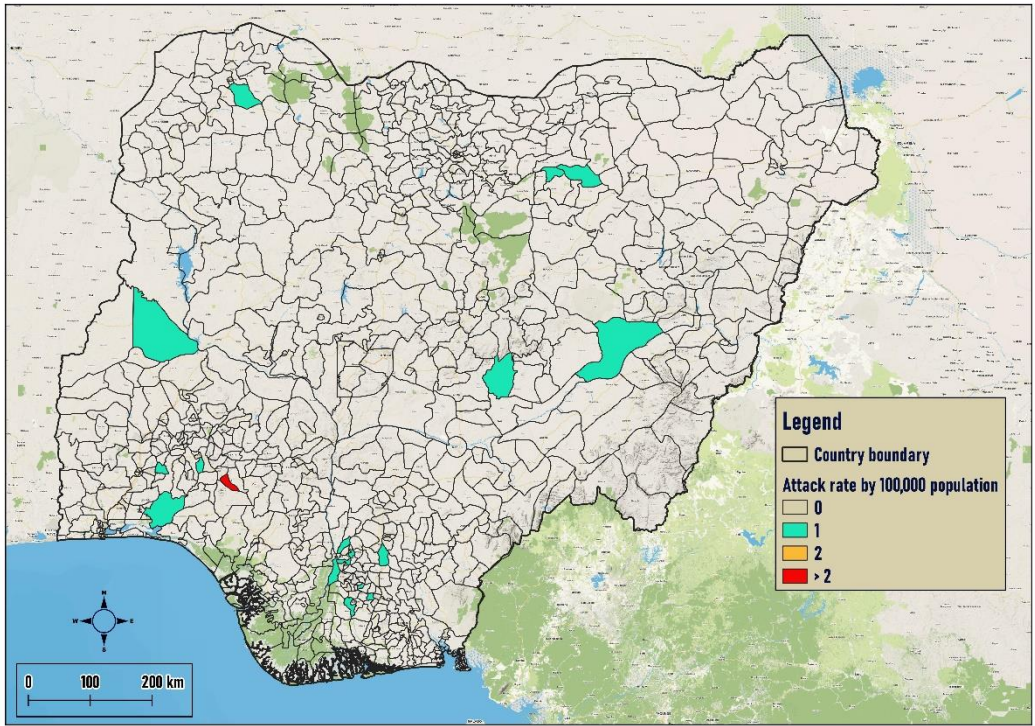
## CUMULATIVE FOR 1<sup>st</sup> JANUARY 2022 – 31<sup>st</sup> December 2022

- Cumulatively from 1<sup>st</sup> January 2022 – 31<sup>st</sup> December 2022, a total of 2639 suspected cases have been reported from 557 LGAs in 36 states including the FCT.
- The cases were reported from the following states: Abia (72), Adamawa (28), Akwa Ibom (14), Anambra (121), Bauchi (226), Bayelsa (32), Benue (45), Borno (190), Cross River (50), Delta (14), Ebonyi (32), Edo (31), Ekiti (66), Enugu (143), FCT (8), Gombe (16), Imo (90), Jigawa (192), Kaduna (48), Kano (41), Katsina (179), Kebbi (105), Kogi (29), Kwara (68), Lagos (8), Nasarawa (35), Niger (53), Ogun (60), Ondo (120), Osun (34), Oyo (101), Plateau (95), Rivers (36), Sokoto (39), Taraba (79), Yobe (108), and Zamfara (31).
- Total of (32) presumptive positive and fifteen (15) inconclusive results were recorded from the Nigeria Laboratory networks.
- These **presumptive positives** were from CPHL Lagos (12), MDH Abuja (2), NRL Abuja (11) UBTH Benin (3), UNTH Enugu (2), and YDMH (2). These were reported from **Anambra -2** (Anambra East, Ogbaru), **Bauchi -4** (Dambam, Kirfi, Itas/Gadau, and Zaki), **Borno -3** (Bama (1), Kala/Balge (2)), **Cross River -1** (Akabuyo). **Edo -2** (Egor, Uhumwode), **Ekiti-1** (Irepodun/Ifelodun), **Imo -1** (Owerri West), **Kwara-1** (Kaiama), **Niger -1** (Suleja). **Ogun-3** (Ijebu East, Ijebu North, Abeokuta) **Ondo-6** (Akure South), **Osun-2** (Atakunmosa East, Ejigbo), **Rivers-1** (Port-Harcourt), **Taraba -2** (Karim Lamido, Bali), **Sokoto-2** (Dange-shuni, Tambuwal). The **inconclusive** cases were reported from **Anambra-2** (Idemili South (1), Ayamelum (1), **Bauchi -1** (Jama'are), **Enugu -1** (Agwu (1), **Imo -2** (Nwangele (1), Ahiazu Mbaise (1), **Jigawa -2** (Hadejia, (1, Roni, (1)), **Kaduna -1** (Kaduna North), **Oyo -1** (Olorunsogo), **Ogun-1** (Ijebu Ode) and **Osun - 1** (Irewole), **Taraba -1** (Jalingo) and **Yobe -1** (Gulani]. These samples have been shipped to IP Dakar for confirmation.
- Twenty-one (21) confirmed cases have been reported from: **Anambra-4** [Anambra East (1), Idemili South (1), Ogbaru (1), Njikoka (1)], **Bauchi -2** [Jama'are (1), Katagum (1)], **Enugu -1** (Awgu (1)], **Imo -3** [Ahiazu Mbaise (1), Nwangele (1), Owerri West (1)], **Kwara -1** [Kaiama (1)] **Ogun -1** [Ijebu East (1)], **Ondo-3** [Akure South (3)], **Osun-3** [Atakunmosa East (1), Irewole (1), Ejigbo (1)], **Plateau -1** [Qua'an Pan (1)] **Sokoto-1** [Dange-shuni (1), **Taraba-1** [Karim Lamido (1)]
- Fifteen deaths recorded from suspected cases in Abia (1), Bayelsa (1), Benue (1), Imo (1), Kaduna (2), Katsina (2), Kebbi (1), Taraba (2), Yobe (1) and Zamfara (3) States [**CFR = 0.6%**].
- Male to female ratio for suspected cases was **1.2:1** with males 1,458 (55.2%) and females 1,181 (44.8%)
- Seventy-seven percent (77%) of cases were predominantly aged 30 years and below.
- Two hundred and seventy-one (10%) of 2639 suspected cases received at least one dose of the yellow fever vaccine
- The NCDC is coordinating response activities through the National Multi-agency Yellow Fever Technical Working Group (YF TWG)

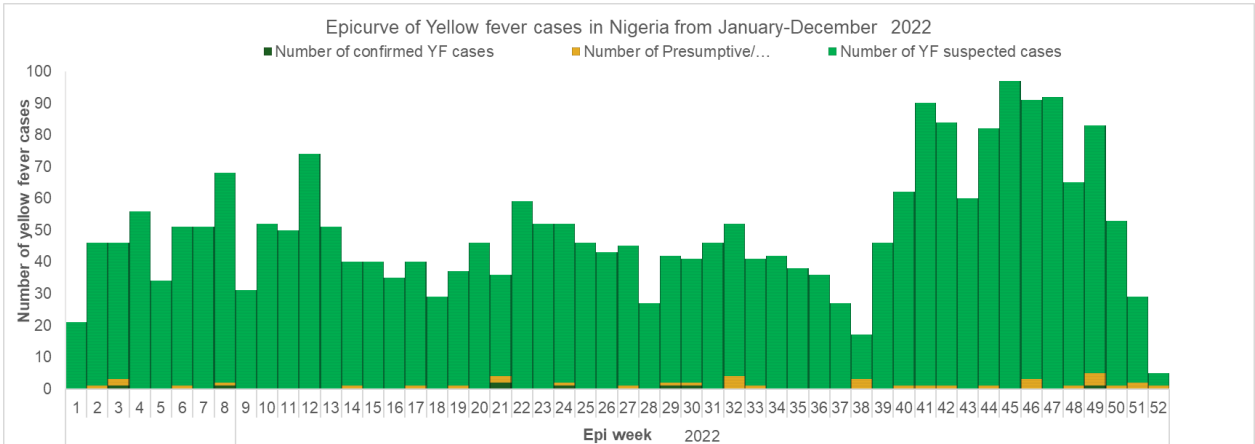


**Table 1: Summary of yellow fever cases in Nigeria from January – December 2022**

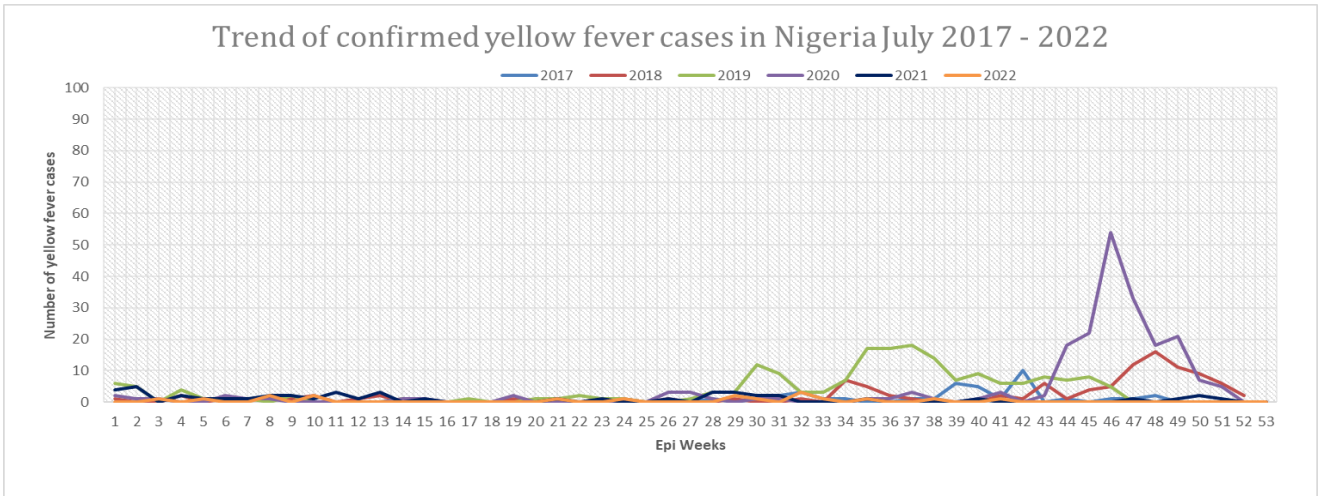
State	# Suspected Cases	# LGAs with suspected cases	# LGAs with confirmed cases	Laboratory Results					Deaths	
				Samples positive (IgM) & Inconclusive in NG	LGAs with positive (IgM) & Inconclusive in NG	Confirmed Cases (PCR)	Confirmed Cases (IP Dakar)	Total Confirmed Cases	# Deaths among Confirmed Cases [CFR] (%)	# Deaths among All Cases [CFR](%)
Abia	72	15	-	-	-	-	-	-	-	1
Adamawa	28	12	-	-	-	-	-	-	-	-
Akwa Ibom	14	9	-	-	-	-	-	-	-	-
Anambra	121	20	3	4	3	1	3	4	-	-
Bauchi	226	19	2	5	5	1	1	2	-	-
Bayelsa	32	8	-	-	-	-	-	-	-	1
Benue	45	19	-	-	-	-	-	-	-	1
Borno	190	23	-	2	3	-	-	-	-	-
Cross River	50	12	-	1	1	-	-	-	-	-
Delta	14	6	-	-	-	-	-	-	-	-
Ebonyi	32	13	-	-	-	-	-	-	-	-
Edo	31	14	-	2	2	-	-	-	-	-
Ekiti	66	15	-	1	1	-	-	-	-	-
Enugu	143	17	1	1	1	-	1	1	-	-
FCT Abuja	8	3	-	-	-	-	-	-	-	-
Gombe	16	10	-	-	-	-	-	-	-	-
Imo	90	26	3	3	3	-	3	3	-	1
Jigawa	192	21	-	3	2	-	-	-	-	-
Kaduna	48	12	-	1	1	-	-	-	-	2
Kano	41	17	-	-	-	-	-	-	-	-
Katsina	179	32	-	-	-	-	-	-	-	2
Kebbi	105	17	-	-	-	-	-	-	-	1
Kogi	29	14	-	-	-	-	-	-	-	-
Kwara	68	13	1	1	1	-	1	1	-	-
Lagos	8	7	-	-	-	-	-	-	-	-
Nasarawa	35	11	-	-	-	-	-	-	-	-
Niger	53	14	-	1	1	-	-	-	-	-
Ogun	60	14	1	4	4	-	1	1	-	-
Ondo	120	14	1	6	1	-	3	3	-	-
Osun	34	15	2	3	3	-	3	3	-	-
Oyo	101	30	-	1	1	-	-	-	-	-
Plateau	95	15	1	1	1	-	1	1	-	-
Rivers	36	18	-	1	1	-	-	-	-	-
Sokoto	39	12	1	2	2	-	1	1	-	-
Taraba	79	15	1	3	3	-	1	1	-	2
Yobe	108	16	-	1	1	-	-	-	-	1
Zamfara	31	9	-	-	-	-	-	-	-	3
<b>TOTAL</b>	<b>2639</b>	<b>557 (71%)</b>	<b>17(2.2%)</b>	<b>47(1.8%)</b>	<b>41 (5.3%)</b>	<b>2 (0.1%)</b>	<b>19 (0.7%)</b>	<b>21 (0.8%)</b>	<b>0 (0%)</b>	<b>15 (0.6%)</b>



**Figure 1: Map of Nigeria showing yellow fever outbreak attack rates in affected LGAs from January – December 2022**



**Figure 2: Epicurve of yellow fever cases in Nigeria from January – December 2022**



**Figure 3: Trend of confirmed yellow fever cases in Nigeria 2017 – 2022**

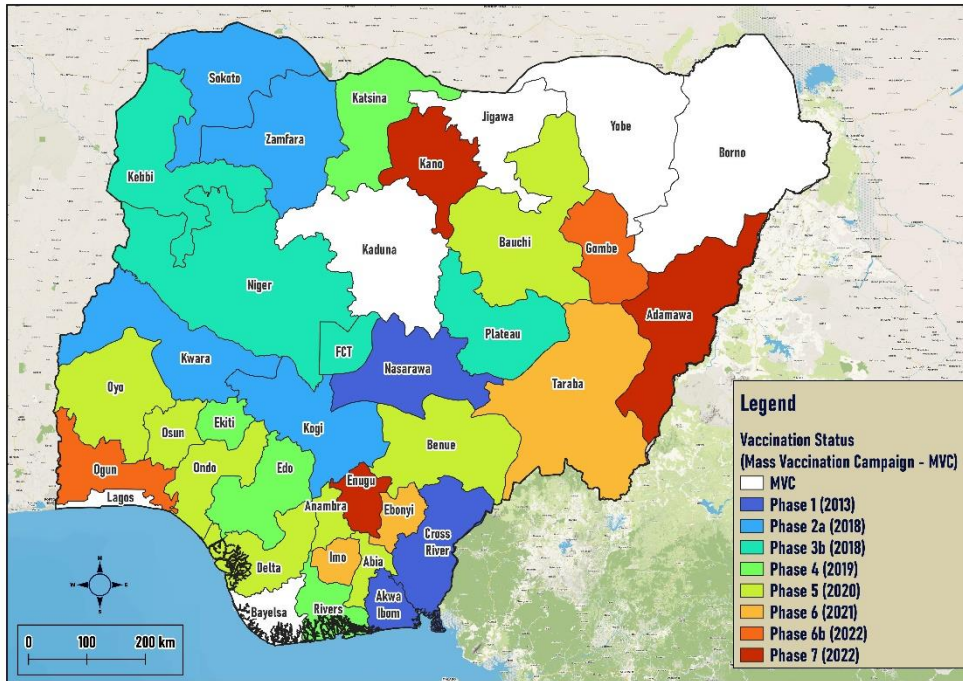


Figure 4: Map of Nigeria showing states and year of implementation of yellow fever mass-vaccination campaigns from 2013 – 2022

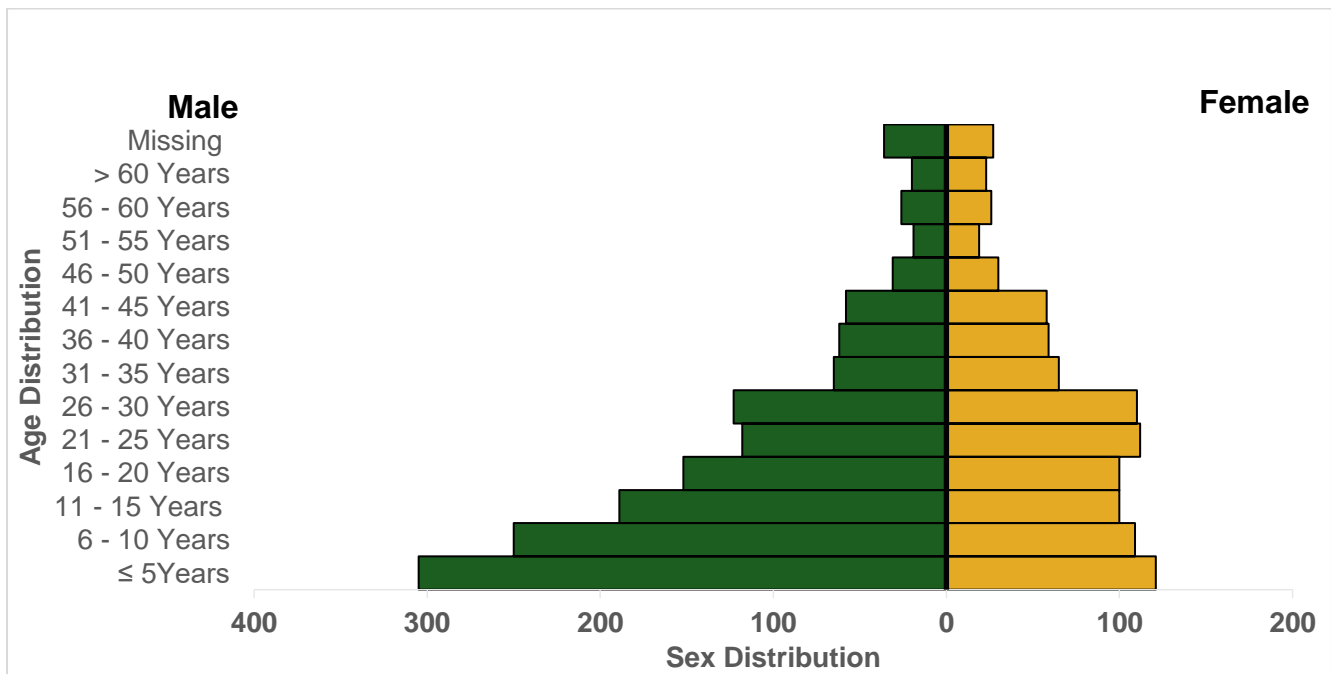


Figure 5: Age and sex distribution of yellow fever cases in Nigeria from January – December 2022.

# Partners

