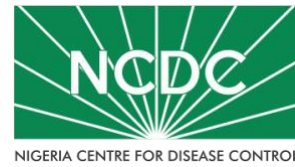


COVID-19 SITUATION REPORT

SITUATION REPORT 191

Sunday, 6th September 2020



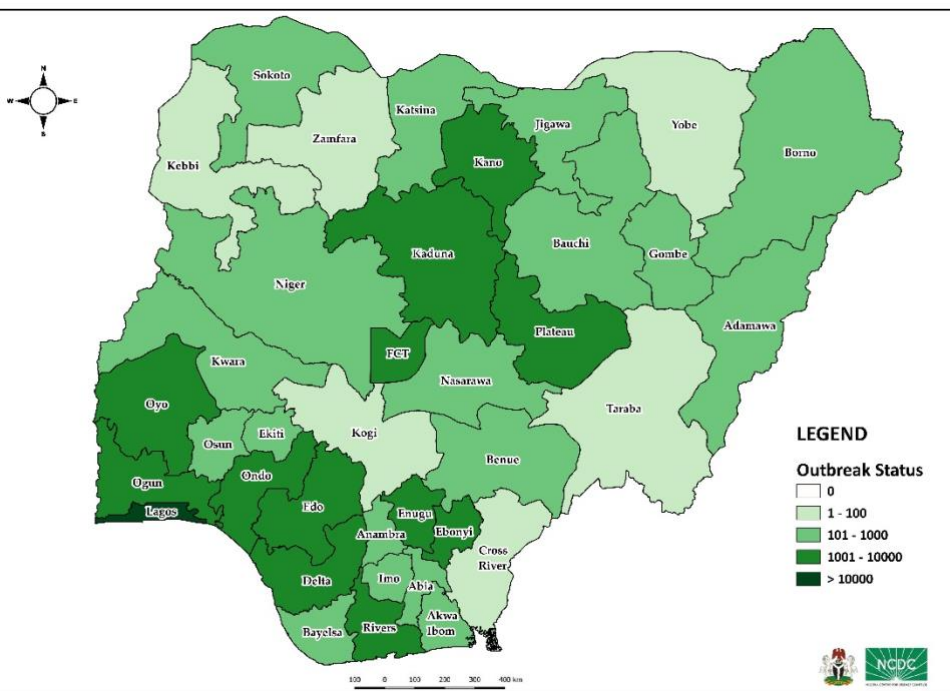
DATA AS REPORTED AND ACCURATE BY NCDC AS AT MIDNIGHT 6th SEPTEMBER 2020

HIGHLIGHTS

- One hundred (**100**) confirmed cases were reported in the last 24 hours from **10** states – Lagos (39), FCT (22), Kaduna (19), Oyo (7), Ebonyi (6), Edo (3), Bauchi (1), Ekiti (1), Katsina (1) and Nasarawa (1).
- Ninety-one (**91**) discharges have been reported in the last 24 hours in **10** states – Borno (32), Ebonyi (18), Ogun (12), Kaduna (9), Bauchi (7), Edo (5), Kano (3), FCT (2), Rivers (2) and Ekiti (1).
- Three (**3**) deaths were reported in the last 24 hours in **two** states – FCT (2), Ebonyi (1).
- All **36** states in Nigeria, and the FCT, have reported a confirmed case.

STATE OF THE NATION

Figure 1: Map of Nigeria showing 36 states and FCT affected by COVID-19



SITUATION UPDATES

Total (New in the last 24 hours)

SAMPLES TESTED

424,186 (2,086)

CONFIRMED CASES

55,005 (100)

AFFECTED STATES INCLUDING FCT

37

DISCHARGED CASES

43,013 (91)

CONFIRMED FATALITIES

1,057 (3) – 1.9% CFR

DEMOGRAPHICS

MALE – 34,920 (63%)

FEMALE – 20,085 (37%)

MOST AFFECTED AGE GROUP

31 - 40 (25%)

PERSONS OF INTEREST

11,693 (Total)

11,645 (99.6% - Exceeded Follow Up)

PROVENANCE

TRAVEL HISTORY – 850 (1%)

CONTACTS – 12,950 (24%)

UNKNOWN EXPOSURE – 41,205 (75%)

GLOBAL UPDATES

TOTAL NUMBER OF CASES

26,763,217 (876,616 deaths)

COUNTRIES & TERRITORIES AFFECTED

216*

*Excluding the 2 International Conveyance

GENERAL FACT SHEET – DATA AS AT 6th SEPTEMBER 2020

Table 1: States with reported laboratory-confirmed COVID-19 cases, recoveries, deaths and days since last reported case

STATES	CONFIRMED CASES		DISCHARGED CASES		DEATHS		TOTAL ACTIVE CASES	DAYS SINCE LAST REPORTED CASE
	TOTAL	NEW	TOTAL	NEW	TOTAL	NEW		
Lagos	18,347	39	15,233	0	202	0	2,912	0
FCT	5,301	22	1,612	2	67	2	3,622	0
Oyo	3,194	7	1,959	0	37	0	1,198	0
Plateau	2,720	0	1,690	0	30	0	1,000	1
Edo	2,597	3	2,366	5	100	0	131	0
Kaduna	2,208	19	2,095	9	32	0	81	0
Rivers	2,175	0	2,042	2	57	0	76	1
Delta	1,768	0	1,603	0	48	0	117	1
Kano	1,727	0	1,604	3	54	0	69	6
Ogun	1,678	0	1,609	12	26	0	43	1
Ondo	1,561	0	1,398	0	32	0	131	1
Enugu	1,184	0	1,088	0	21	0	75	2
Ebonyi	1,020	6	974	18	29	1	17	0
Kwara	982	0	794	0	25	0	163	1
Katsina	813	1	457	0	24	0	332	0
Abia	807	0	712	0	8	0	87	2
Osun	795	0	752	0	17	0	26	2
Gombe	744	0	643	0	23	0	78	1
Borno	741	0	703	32	36	0	2	6
Bauchi	670	1	644	7	14	0	12	0
Imo	534	0	210	0	11	0	313	1
Benue	460	0	291	0	9	0	160	5
Nasarawa	438	1	298	0	12	0	128	0
Bayelsa	391	0	360	0	21	0	10	8
Jigawa	322	0	308	0	11	0	3	52
Ekiti	283	1	248	1	5	0	30	0
Akwa Ibom	280	0	238	0	8	0	34	4
Niger	244	0	216	0	12	0	16	2
Adamawa	228	0	180	0	15	0	33	6
Anambra	221	0	181	0	19	0	21	1
Sokoto	159	0	142	0	16	0	1	6
Kebbi	93	0	82	0	8	0	3	9
Taraba	87	0	73	0	5	0	9	12
Cross River	83	0	73	0	8	0	2	3
Zamfara	78	0	73	0	5	0	0	17
Yobe	67	0	59	0	8	0	0	38
Kogi	5	0	3	0	2	0	0	65
Total	55,005	100	43,013	91	1,057	3	10,935	

States, including FCT, are arranged in descending order by number of total confirmed cases and then alphabetical order

SELECTED CHARTS

Figure 2: Daily Epidemic Curve of Confirmed Cases (WK9 – WK36)

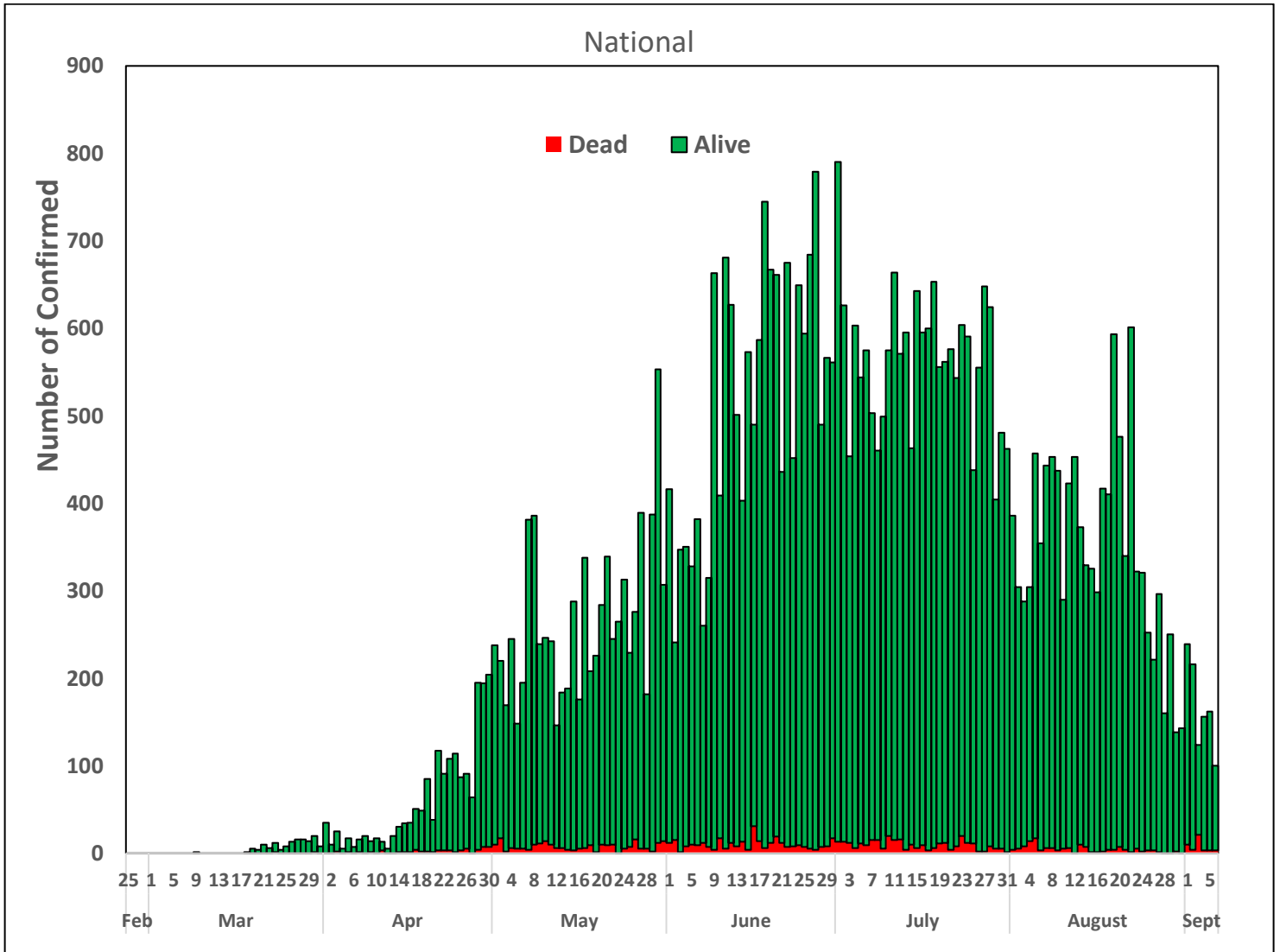
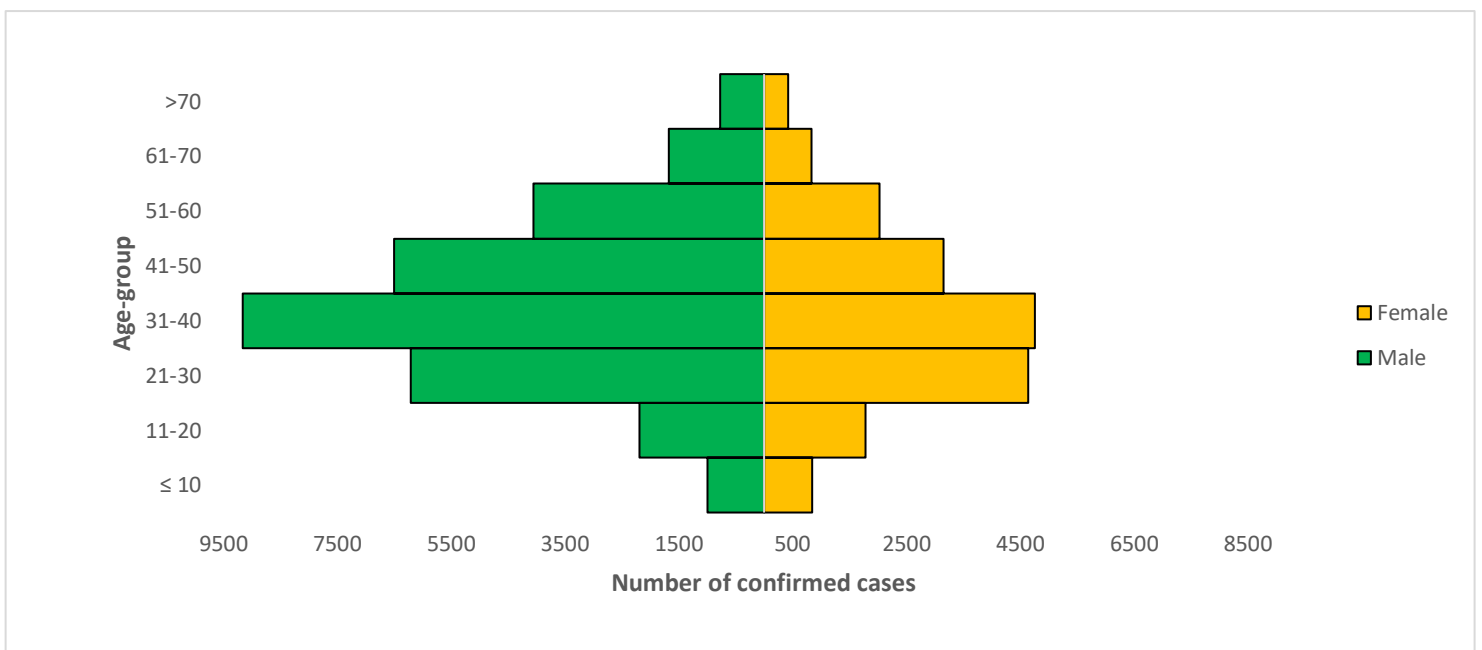


Figure 3: Age-Sex Distribution of Confirmed Cases (WK9 – WK36)



PREPAREDNESS

Since the confirmation of the first case on 27th February 2020, the NCDC has released advisories and statements to help Nigerians and affected groups in particular to respond to the pandemic

- NCDC recently published the first edition of a quick reference guide on setting up sample collection centre - [A step by step guide on setting up a sample collection centre](#)
- NCDC has launched an online course on [Infection, Prevention and Control \(IPC\) for COVID-19](#) NCDC eLearning platform
- Ahead of forthcoming elections in the country, NCDC has issued [Guidelines for Conducting Elections During the COVID-19 Outbreak in Nigeria](#).
- To protect our elders, and those with pre-existing medical conditions, NCDC has issued an [Advisory for Vulnerable Groups](#).
- NCDC has released [guidelines on the re-opening of places for worship](#).
- NCDC has released [Strategies to Improve Surveillance for COVID-19 Guidance for States](#)
- The Nigeria Police Force has released COVID-19 operational guidelines for the [Police and other Law Enforcement Agencies](#) in Nigeria
- Guidelines have been issued for the [safe transportation of remains of persons suspected or confirmed to have died of COVID-19](#)
- Information on diagnostics of the COVID-19 virus can be found in our [detailed FAQ document](#).
- To increase our testing capacity, NCDC has issued guidelines for the [integration of private labs](#).
- Guidelines for [businesses and employers](#) have been updated.
- NCDC has updated its [case definition](#) , [community case definition](#) and [case management guide](#).
- NCDC releases periodic [public health advisories](#) to Nigerians on the COVID-19 disease.
- To adhere to post-lockdown measures, NCDC has released an [advisory on the use of face masks](#), as well as information on the [Use of Cloth face masks](#) and [how to make your cloth face masks](#).
- NCDC has released guidelines for the [management of pregnant women and nursing mothers](#) during the pandemic.
- To address burials of loved ones who die from COVID-19, guidelines have been issued to advise on the [management of dead bodies](#).
- For health centres managing cases, the following documents have been released- a guideline for the [Rational Use of Personal Protective Equipment in the care of COVID-19 cases](#).
- As part of plans to increase the testing capacity of the country, the NCDC published a [National Strategy to Scale Up Access to Coronavirus Disease Testing in Nigeria](#) document.
- The Presidential Task Force has published policies and announcements on COVID-19 [available on the website of the Presidency](#) – including presidential addresses, task force updates and information on livelihood and economic support.

RESPONSE

On 28th February 2020, a multi-sectoral Emergency Operations Centre (EOC) was activated at Level 3 – the highest emergency level in Nigeria –led by NCDC in close coordination with the State Public Health EOCs (PHEOC).

- **Completed re-stocking of reagents and commodities for six (6) laboratories in Anambra, Benue, Cross River, Plateau, Taraba and Yobe States**
- **Provided GeneXpert cartridges for commencement of community case finding using mobile truck in Imo State**
- **Developed Infection Prevention and Control (IPC) guidelines on school re-opening**
- **Developed and disseminated bi-weekly messaging priorities and key messages to stakeholders and states**
- Currently supporting states plans for setting up of sample collection sites
- Currently finalising plans for roll-out of training on the use of Polymerase Chain Reaction (PCR) equipment across states
- Trained IPC focal persons from Secondary Healthcare facilities in Adamawa State

- Conducted risk communication training for Ward Focal Persons (WFPs) and Community Informants (CIs) in Delta State
- All education materials can be found via www.covid19.ncdc.gov.ng