

# YELLOW FEVER SITUATION REPORT



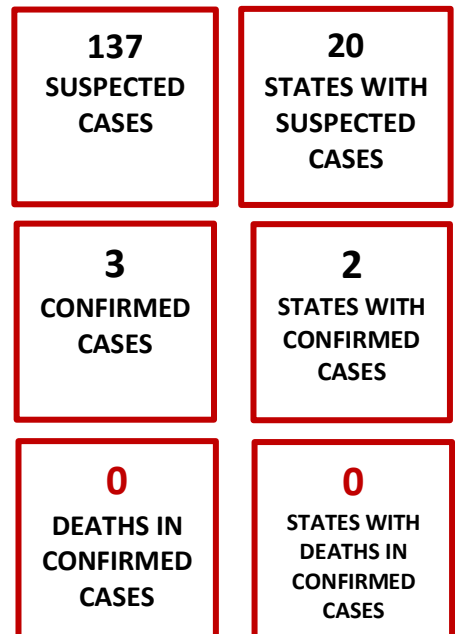
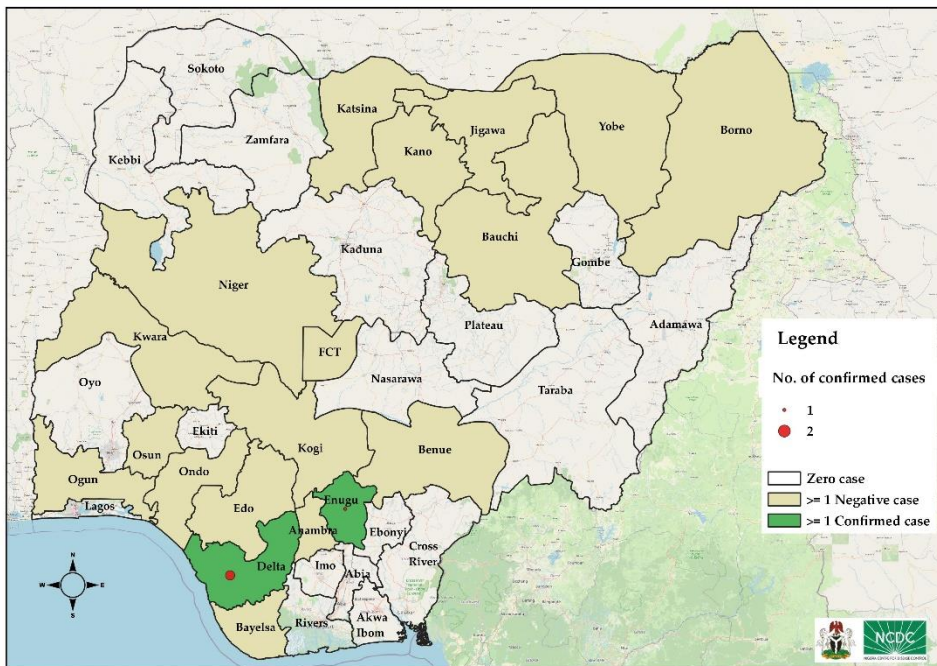
Serial Number: 002	April 2021 Monthly Sitrep
Epi Week:	14 – 17 as at 30 <sup>th</sup> April 2021
Reporting Month:	April 2021

REPORTING MONTH: April 2021

## HIGHLIGHTS

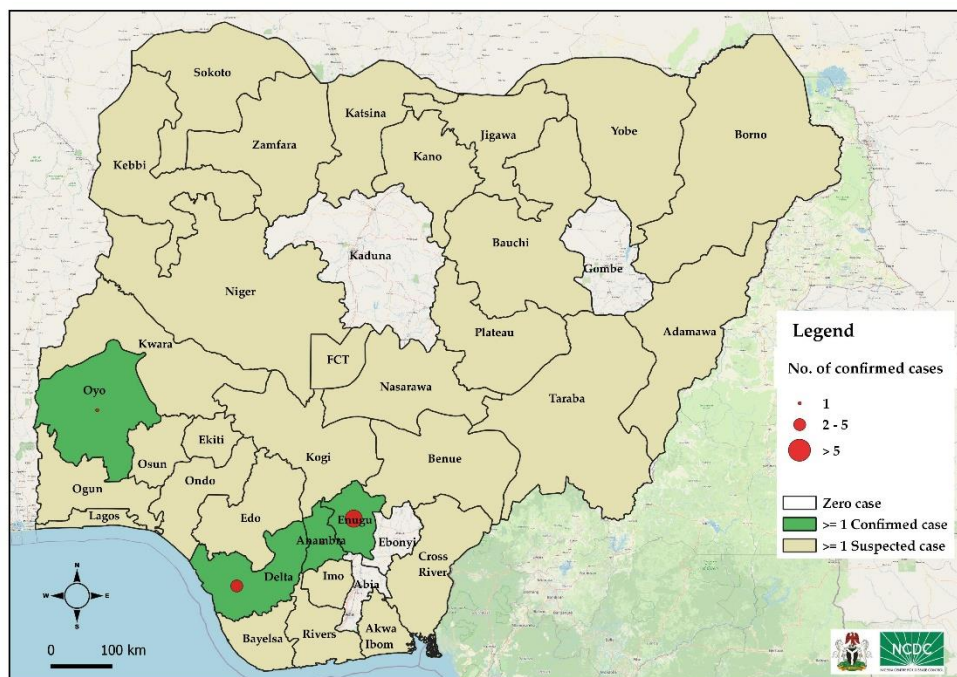
REPORTING PERIOD: APRIL 1<sup>ST</sup> – 30<sup>TH</sup>, 2021

- The Nigeria Centre for Disease Control (NCDC) continues to monitor reports of yellow fever cases in Nigeria.
- A total of 137 suspected cases were reported from 60 Local Government Areas (LGAs) across 18 states: Anambra (24), Bauchi (8), Bayelsa (12), Benue, (2), Borno (20), Edo (4), Enugu (2), FCT (3), Jigawa (1), Kano (1), Katsina (2), Kogi (2), Kwara (4), Niger (7), Ogun (2), Ondo (5), Osun (10), Oyo (10), Taraba (1), Yobe (17).
- Total of eight presumptive positive samples were recorded from Central Public Health Laboratory (CPHL), Lagos from three LGAs in two states; 2 from Anambra [Onitsha North (2)], 6 from Oyo [Ido (4), Ona ara (2)]
- Three new confirmed cases from Institut Pasteur (IP) Dakar from; Enugu [Udenu (1) and Delta [Ika South (2)].
- No deaths have been reported among all cases within the review period.



## CUMMULATIVE FOR 1<sup>st</sup> JANUARY– 30<sup>th</sup> APRIL, 2021

- Cumulatively from 1 January - 30 April 2021, a total of 530 suspected cases have been reported from 33 states including FCT in 213 LGAs
- The cases were reported from the following states: Adamawa [14], Akwa Ibom [1], Anambra [39], Bauchi [16], Bayelsa [14], Benue [15], Borno [70], Cross River [9], Delta [8], Edo [26], Ekiti [2], Enugu [24], FCT Abuja [7], Imo [7], Jigawa [18], Kano [14], Katsina [42], Kebbi [10], Kogi [7], Kwara [14], Lagos [3], Nasarawa [9], Niger [22], Ogun [8], Ondo [14], Osun [14], Oyo [18], Plateau [5], Rivers [5], Sokoto [2], Taraba [5], Yobe [59] and Zamfara [9] States
- All the suspected cases were reported from 215 LGAs across the 33 states
- Total of 42 presumptive positive and inconclusive samples were recorded from CPHL Lagos (30), NRL Abuja (10), YDMH Kaduna (1), MDH Abuja (1) and have been sent to IP Dakar for confirmation. These cases were reported from Anambra (8), Bauchi (1), Benue (2), Borno (4), Delta (3), Enugu (11), Imo (1), Kano (1), Katsina (1), Niger (1), Ondo (1), Oyo (7), Yobe (1)
- Eight (11) confirmed cases have been reported from IP Dakar from: **Enugu-6** [Enugu East (6)], **Anambra-1** (Idemili North (1)), **Delta-3** [Ika South (2), Patani (1)], **Oyo-1** [Oyo East (1)]
- One death was recorded from Anambra (1) among suspected cases
- Male to female ratio was 1:1.4 with males 311 (58.7%) and females 219 (41.3%)
- Eighty-two percent of cases were predominantly aged 30 years and below
- The NCDC is coordinating response activities through the National Multi-agency Yellow Fever Technical Working Group (YF TWG)



<b>530</b> SUSPECTED CASES	<b>33</b> STATES WITH SUSPECTED CASES
<b>11</b> CONFIRMED CASES	<b>4</b> STATES WITH CONFIRMED CASES
<b>0</b> DEATHS IN CONFIRMED CASES	<b>0</b> STATES WITH DEATHS IN CONFIRMED CASES

Table 1: Summary of cases of yellow fever in Nigeria as at Epi week 17 (April 30<sup>th</sup>), 2021.

State	# Suspected Cases	# LGAs with suspected cases	# LGAs with confirmed cases	Laboratory Results					Deaths	
				Samples positive (IgM) & Inconclusive in NG)	LGAs with positive (IgM) & Inconclusive	Confirmed Cases (PCR NG)	Confirmed Cases (IP Dakar)	Total Confirmed Cases	# Deaths among Confirmed Cases [CFR] (%)	# Deaths among All Cases [CFR](%)
Abia	-	-	-	-	-	-	-	-	-	-
Adamawa	14	8	-	-	-	-	-	-	-	-
Akwa Ibom	1	1	-	-	-	-	-	-	-	-
Anambra	39	13	1	8	5	-	1	1	-	1
Bauchi	16	5	-	1	1	-	-	-	-	-
Bayelsa	14	4	-	-	-	-	-	-	-	-
Benue	15	6	-	2	1	-	-	-	-	-
Borno	70	13	-	4	4	-	-	-	-	-
Cross River	9	6	-	-	-	-	-	-	-	-
Delta	8	3	2	3	2	-	3	3	-	-
Ebonyi	-	-	-	-	-	-	-	-	-	-
Edo	26	8	-	-	-	-	-	-	-	-
Ekiti	2	2	-	-	-	-	-	-	-	-
Enugu	24	7	1	11	3	-	6	6	-	-
FCT Abuja	7	4	-	-	-	-	-	-	-	-
Gombe	-	-	-	-	-	-	-	-	-	-
Imo	7	6	-	1	1	-	-	-	-	-
Jigawa	18	9	-	-	-	-	-	-	-	-
Kaduna	-	-	-	-	-	-	-	-	-	-
Kano	14	9	-	1	1	-	-	-	-	-
Katsina	42	15	-	1	1	-	-	-	-	-
Kebbi	10	5	-	-	-	-	-	-	-	-
Kogi	7	7	-	-	-	-	-	-	-	-
Kwara	14	6	-	-	-	-	-	-	-	-
Lagos	3	2	-	-	-	-	-	-	-	-
Nasarawa	9	8	-	-	-	-	-	-	-	-
Niger	22	10	-	1	1	-	-	-	-	-
Ogun	8	4	-	-	-	-	-	-	-	-
Ondo	14	7	-	1	1	-	-	-	-	-
Osun	14	6	-	-	-	-	-	-	-	-
Oyo	18	10	1	7	3	-	1	1	-	-
Plateau	5	4	-	-	-	-	-	-	-	-
Rivers	5	5	-	-	-	-	-	-	-	-
Sokoto	2	2	-	-	-	-	-	-	-	-
Taraba	5	3	-	-	-	-	-	-	-	-
Yobe	59	10	-	1	1	-	-	-	-	-
Zamfara	9	5	-	-	-	-	-	-	-	-
<b>TOTAL</b>	<b>530</b>	<b>213(28%)</b>	<b>5(0.6)</b>	<b>42 (8%)</b>	<b>25</b>	<b>0</b>	<b>11</b>	<b>11 (2%)</b>	<b>0 (0%)</b>	<b>1 (0.2%)</b>



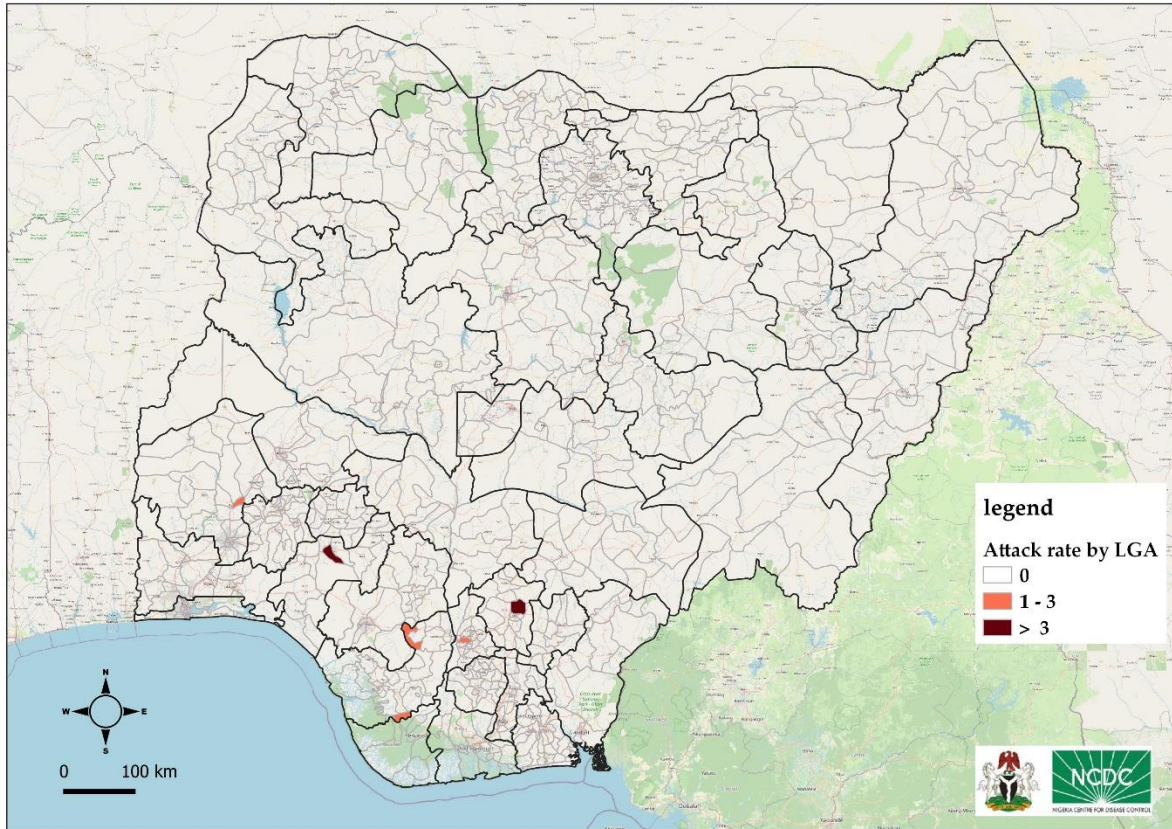


Figure 1: Map of Nigeria showing yellow fever outbreak attack rates in affected LGAs, Epi week 1 to 17, 2021

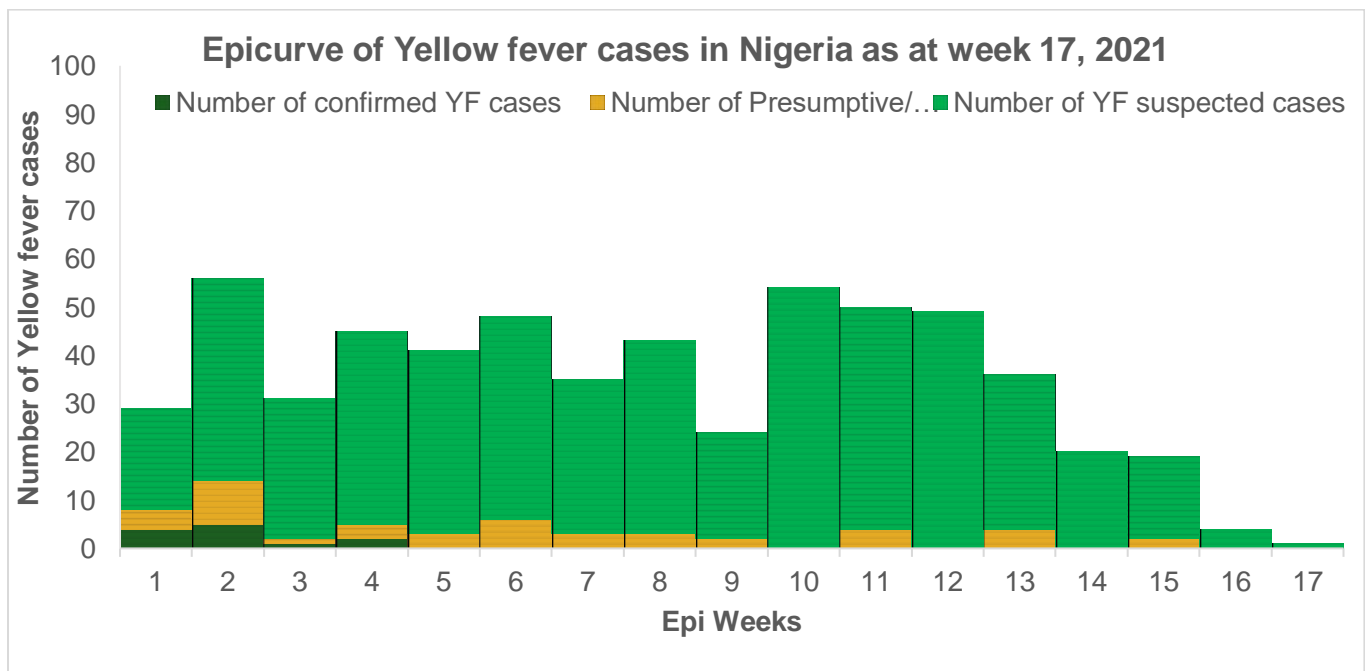


Figure 2: Epicurve of yellow fever cases in Nigeria as at Epi week 17 April, 2021

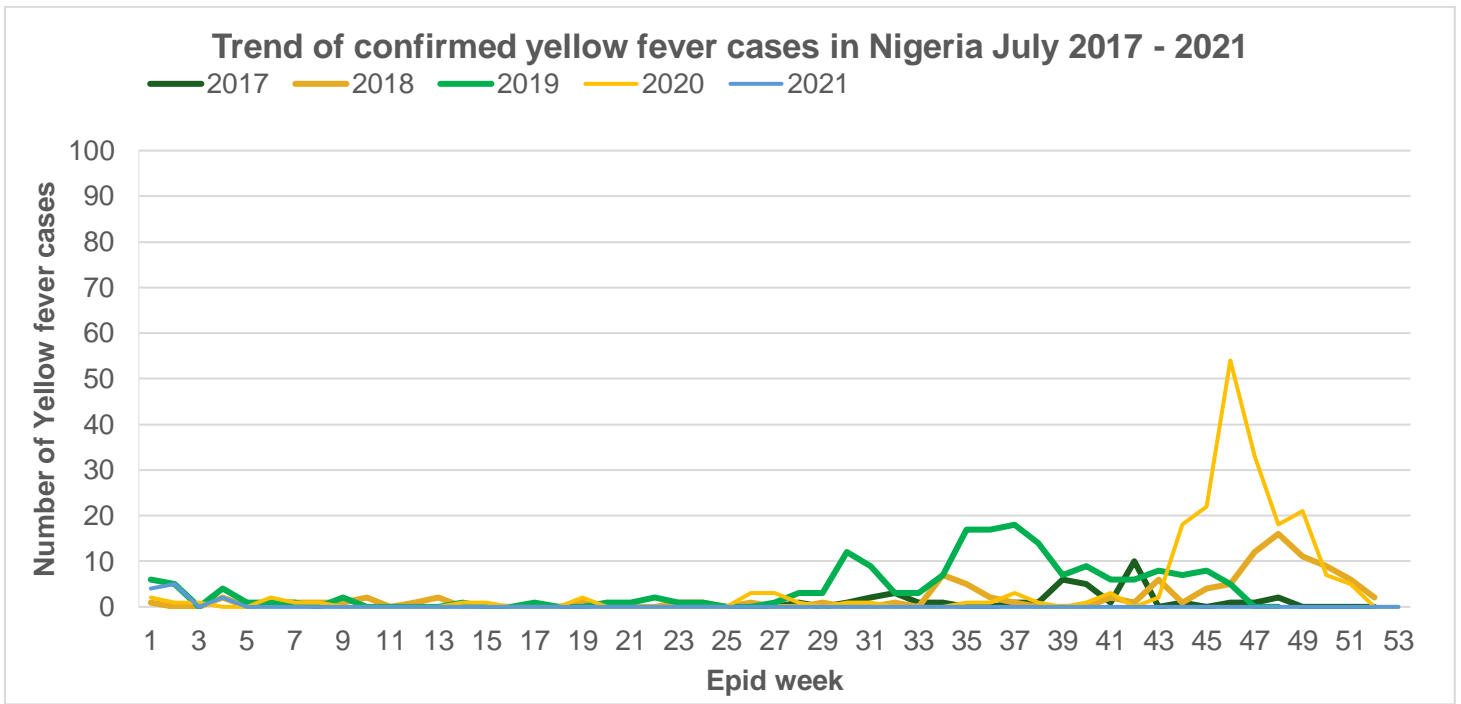


Figure 3: Trend of suspected yellow fever cases in Nigeria 2017 – 2021

## Partners

