

COVID-19 SITUATION REPORT

SITUATION REPORT 61

Wednesday, 29th April 2020



DATA AS REPORTED AND ACCURATE BY NCDC by Midnight 29th April 2020

HIGHLIGHTS

- One new state, **Yobe**, recorded a confirmed COVID-19 case in the last 24 hours –The total number of states including FCT that have reported at least one confirmed case in Nigeria are now **35** (34 states + FCT).
- One hundred and ninety-six (**196**) cases were reported in the last 24 hours – Lagos (87), Kano (24), Gombe (18), Kaduna (17), FCT (16), Katsina (10), Sokoto (8), Edo (7), Borno (6), Ebonyi (1), Yobe (1), Adamawa(1)
- **Fifty-two** cases were discharged in the last 24 hours in three states Lagos (49), Edo (1) and Delta (2)
- The DG NCDC while highlighting the importance of adhering to the Ramadan public health advisory, also recognised the efforts and dedication healthcare workers, during the Presidential Task Force Press Briefing.

SITUATION UPDATES

Total (New in the last 24 hours)

SAMPLES TESTED
13,689 (861)

CONFIRMED CASES
1728 (196)

AFFECTED STATES INCLUDING FCT
35 (1)

DISCHARGED CASES
307 (52)

CONFIRMED FATALITIES
51 (7) – 3% CFR

DEMOGRAPHICS
MALE – 1145 (66%)
FEMALE – 583 (34%)

MOST AFFECTED AGE GROUP
31 - 40 (23%)

TOTAL NUMBER OF PEOPLE OF INTEREST
9305 (Total)
9,217 (99% - Exceeded Follow Up)

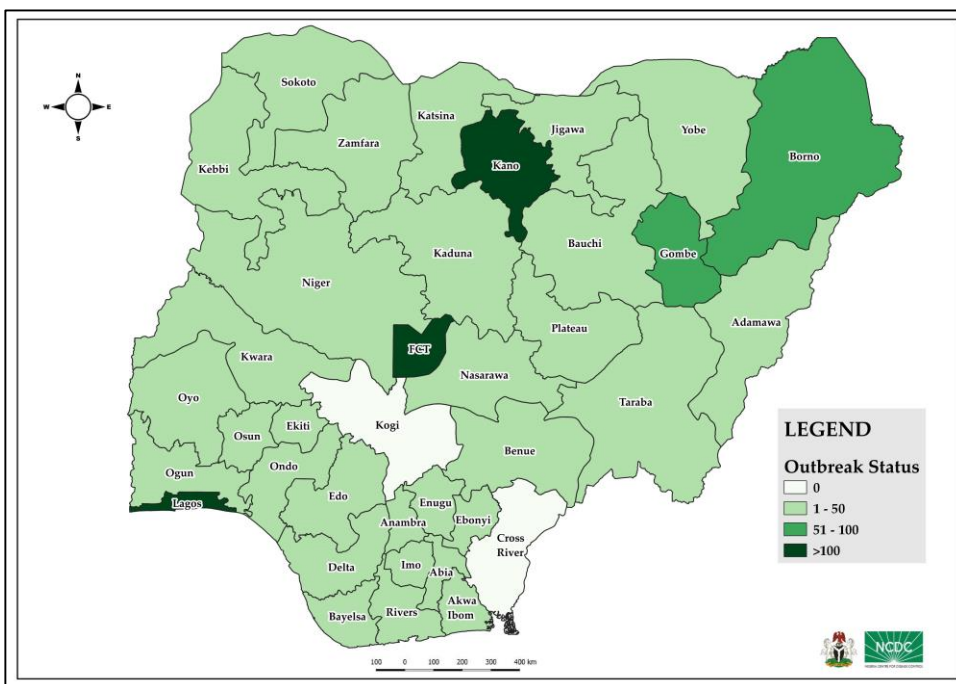
PROVENANCE
TRAVEL HISTORY – **210 (12%)**
CONTACTS – **444 (26%)**
NO EPIDEMIOLOGIC LINK – **868 (50%)**
INCOMPLETE – **206 (12%)**

GLOBAL UPDATES
TOTAL NUMBER OF CASES
3,018,952 (207,973 deaths)

COUNTRIES AFFECTED*
210
Excluding the 2 International Conveynances

STATE OF THE NATION

Figure 1: Map of Nigeria showing 34 states and FCT affected by COVID-19



GENERAL FACT SHEET – DATA AS AT APRIL 29TH 2020

Table 1: States with reported laboratory-confirmed COVID-19 cases, recoveries, deaths and days since last reported case

STATES	CONFIRMED CASES		DISCHARGED CASES		DEATHS		TOTAL ACTIVE CASES	DAYS SINCE LAST REPORTED CASE
	CUMULATIVE	NEW	CUMULATIVE	NEW	CUMULATIVE	NEW		
Lagos	931	87	192	49	21	2	718	0
FCT	174	16	36	0	3	0	135	0
Kano	139	24	0	0	3	2	136	0
Gombe	64	18	0	0	0	0	64	0
Borno	59	6	0	0	5	3	54	0
Ogun	50	0	6	0	1	0	43	1
Katsina	40	10	0	0	2	0	38	0
Edo	37	7	9	1	3	0	25	0
Osun	34	0	18	0	2	0	14	3
Kaduna	32	17	6	0	0	0	26	0
Bauchi	29	0	6	0	0	0	23	1
Sokoto	27	8	0	0	3	0	24	0
Oyo	21	0	9	0	2	0	10	3
Akwa Ibom	12	0	9	0	1	0	2	3
Kwara	11	0	2	0	0	0	9	6
Ekiti	8	0	2	0	1	0	5	4
Ondo	8	0	3	0	0	0	5	3
Taraba	8	0	0	0	0	0	8	2
Delta	7	0	4	2	2	0	1	1
Jigawa	7	0	0	0	0	0	7	1
Rivers	7	0	2	0	2	0	3	1
Zamfara	4	0	0	0	0	0	4	1
Enugu	3	0	2	0	0	0	1	1
Abia	2	0	0	0	0	0	2	9
Adamawa	2	1	0	0	0	0	2	0
Ebonyi	2	1	0	0	0	0	2	0
Niger	2	0	0	0	0	0	2	14
Anambra	1	0	1	0	0	0	0	19
Bayelsa	1	0	0	0	0	0	1	3
Benue	1	0	0	0	0	0	1	32
Imo	1	0	0	0	0	0	1	4
Kebbi	1	0	0	0	0	0	1	3
Nasarawa	1	0	0	0	0	0	1	1
Plateau	1	0	0	0	0	0	1	6
Yobe	1	1	0	0	0	0	1	0
TOTAL	1728	196	307	52	51	7	1370	

States including FCT are arranged in descending order by number of total confirmed cases

SELECTED CHARTS

Figure 2: Daily Epidemic Curve of Confirmed Cases (WK9 – WK18)

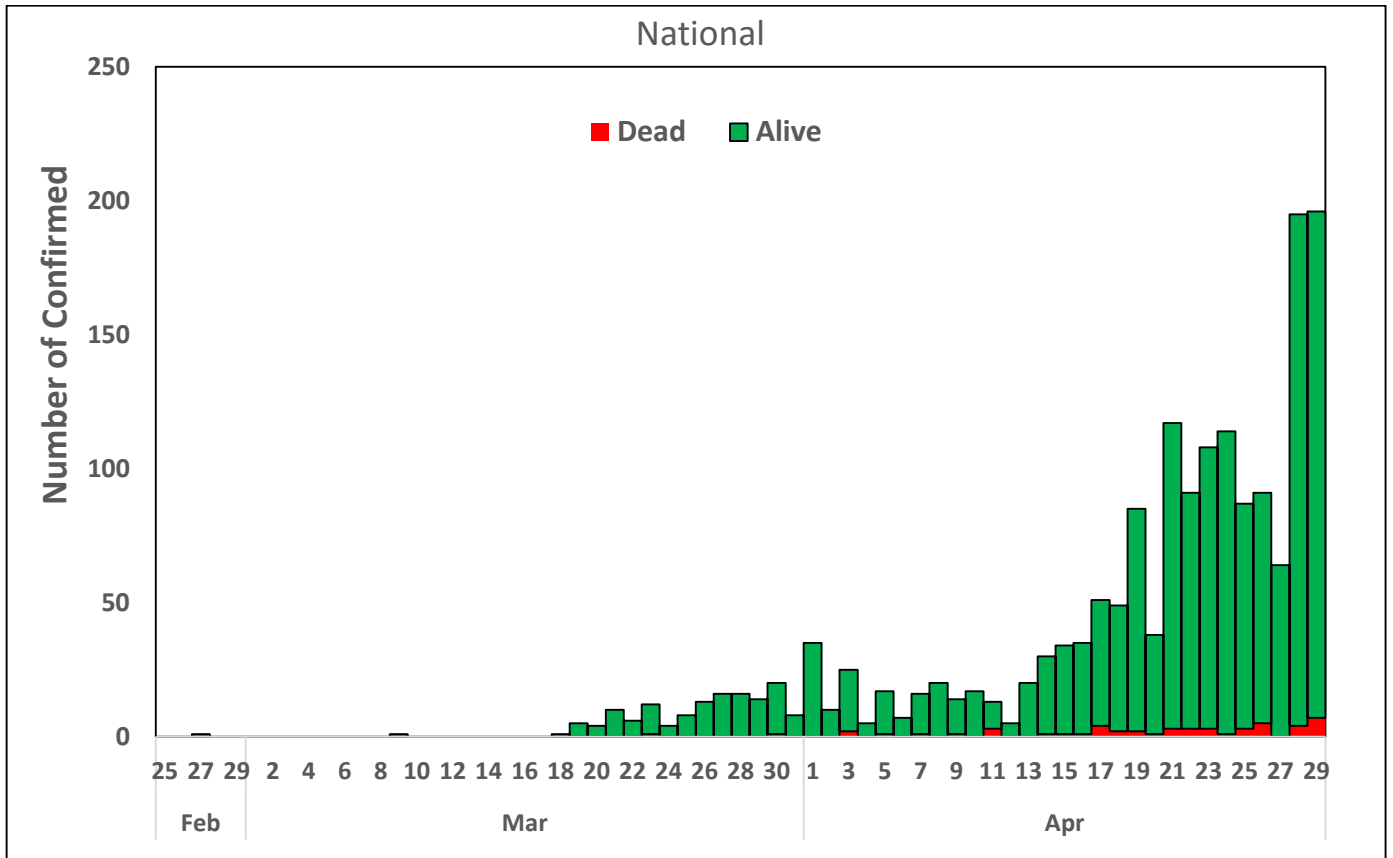
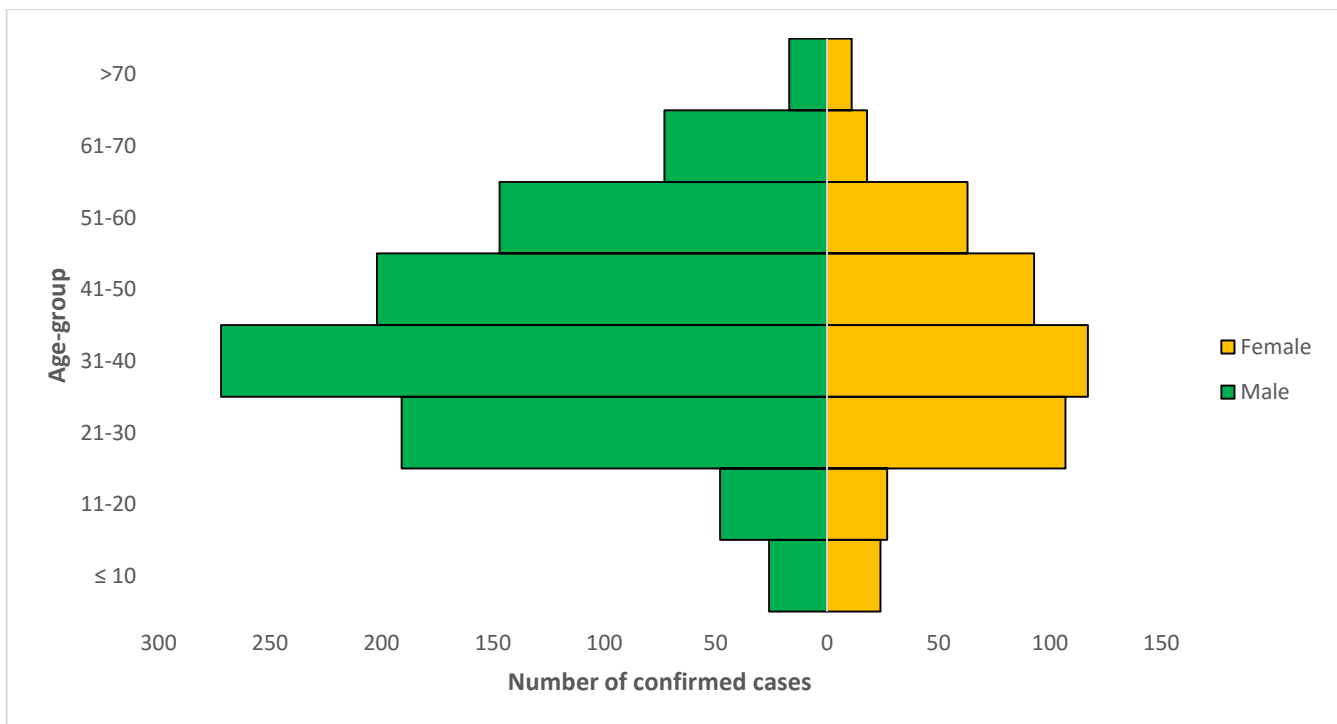


Figure 3: Age-Sex Distribution of Confirmed Cases (WK9 – WK18)



PREPAREDNESS

Since the confirmation of the first case on 27th February, the NCDC has released advisories and statements to help Nigerians and affected groups in particular respond to the pandemic

- Ahead of the Ramadan fasting period, an [Advisory for Ramadan](#) has been issued.
- NCDC releases periodic [public health advisories](#) to Nigerians on the COVID-19 disease, and recently released an [advisory on the use of face masks](#).
- NCDC has released [guidelines for the management of pregnant women and nursing mothers](#) during the pandemic, as well [PPE recommendations during health care delivery](#).
- This is also an updated [case definition](#) for the COVID-19 Coronavirus.
- Guidelines for [businesses](#) and [social distancing](#) have been released.
- To address burials of loved ones who die from COVID-19, guidelines have been issued to advise on the [management of dead bodies](#).
- NCDC has released a [Self-Isolation and Quarantine Guide](#) to help those who are exposed to COVID-19 confirmed cases or returnees to Nigeria.
- For health centres managing cases, the following documents have been released- an [Infection Prevention and Control guideline](#) and a guideline for the [Rational Use of Personal Protective Equipment in the care of COVID-19 cases](#).
- As part of plans to increase the testing capacity of the country, the NCDC published a [National Strategy to Scale Up Access to Coronavirus Disease Testing in Nigeria](#) document
- The Presidential Task Force has published policies and announcements on COVID-19 [available on the website of the Presidency](#) – including presidential addresses, task force updates and information on livelihood and economic support.

RESPONSE

On February 28th 2020, a multi-sectoral Emergency Operations Centre (EOC) was activated at Level 3 – the highest emergency level in Nigeria –led by NCDC and coordinating with the State Public Health EOCs (PHEOC) for a nationwide response.

- **Testing of samples using the Cobas 8800 commenced in NRL**
- **Aminu Kano Teaching Hospital (AKTH) lab has resumed testing**
- Deployment of high-level technical and Rapid response surge teams to Kano State to intensify support of the coordination in the intervention
- Laboratory testing capacity has now been increased to 2500 per day
- New Laboratories have been added to the network, CAMRET- Sokoto, ABU- Zaria and 54 gene (Lagos and Ogun States)
- Developed case management indicator for SORMAS
- Deployed additional response commodities and supplies to all States
- Engaged with government agencies on integration of risk communication in the planned training for Primary Healthcare workers in the country
- Deployment of Rapid Response Team (RRT) to support response in all states with confirmed case(s)
Currently **35** RRTs deployed
- All education materials can be found via www.covid19.ncdc.gov.ng