

# COVID-19 SITUATION REPORT

## SITUATION REPORT 220

Monday, 5<sup>th</sup> October 2020



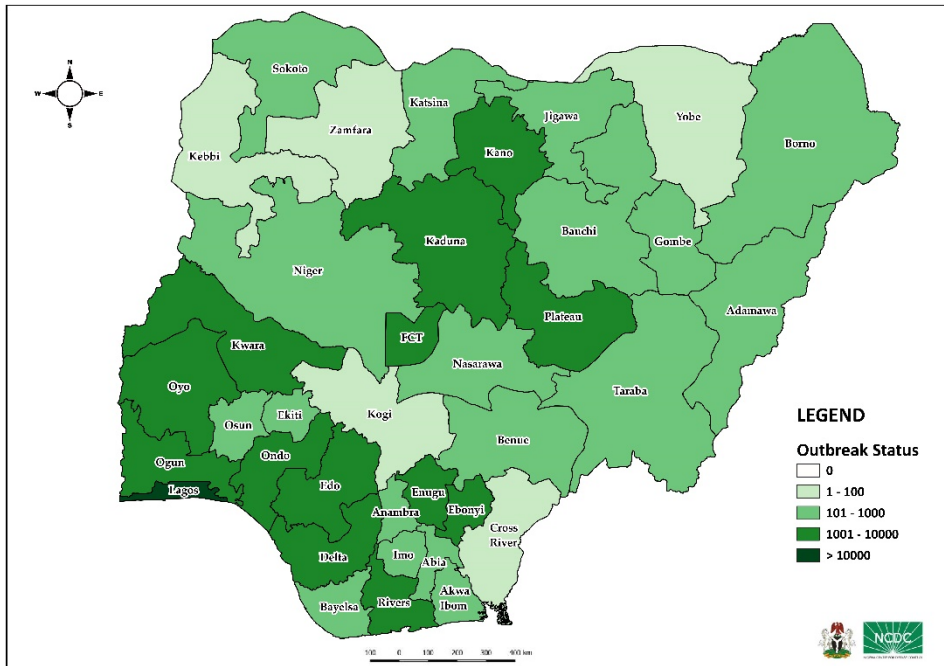
DATA AS REPORTED AND ACCURATE BY NCDC AS AT MIDNIGHT 5<sup>TH</sup> OCTOBER 2020

### HIGHLIGHTS

- One hundred and twenty (**120**) confirmed cases were reported in the last 24 hours from **13** states – Rivers (65), FCT (12), Ogun (9), Katsina (8), Anambra (7), Bauchi (5), Oyo (5), Nasarawa (3), Kaduna (2), Delta (1), Imo (1), Kwara (1) and Taraba (1).
- One hundred and eighty-three (**183**) discharges have been reported in the last 24 hours in **ten** states – Oyo (67), Rivers (44), FCT (14), Katsina (14), Imo (12), Bauchi (10), Kaduna (9), Ekiti (7), Kano (5) and Sokoto (1).
- **No** death was reported in the last 24 hours.
- All **36** states in Nigeria, and the FCT, have reported a confirmed case.

### STATE OF THE NATION

Figure 1: Map of Nigeria showing 36 states and FCT affected by COVID-19



### SITUATION UPDATES

Total (New in the last 24 hours)

SAMPLES TESTED

**538,815 (2,120)<sup>1</sup>**

CONFIRMED CASES

**59,465 (120)**

AFFECTED STATES INCLUDING FCT

**37**

DISCHARGED CASES

**50,951 (183)**

CONFIRMED FATALITIES

**1,113 (0) – 1.9% CFR**

DEMOGRAPHICS

MALE – 37,813 (64%)

FEMALE – 21,652 (36%)

MOST AFFECTED AGE GROUP

31 - 40 (27%)

PERSONS OF INTEREST

**30,594 (Total)**

**29,016 (96.9% - Exceeded Follow Up)**

PROVENANCE

TRAVEL HISTORY – 1,001 (1.7%)

CONTACTS – 15,585 (26.2%)

UNKNOWN EXPOSURE – 42,879 (72.1%)

GLOBAL UPDATES

TOTAL NUMBER OF CASES

**35,109,317 (1,035,341 deaths)**

COUNTRIES & TERRITORIES AFFECTED

**216\***

<sup>1</sup>Includes 262 travel tests from FCT and 54Gene lab Lagos travel data

\*Excluding the 2 International Conveyance

## GENERAL FACT SHEET – DATA AS AT 5<sup>TH</sup> OCTOBER 2020

Table 1: States with reported laboratory-confirmed COVID-19 cases, recoveries, deaths and days since last reported case

STATES	CONFIRMED CASES		DISCHARGED CASES		DEATHS		TOTAL ACTIVE CASES	DAYS SINCE LAST REPORTED CASE
	TOTAL	NEW	TOTAL	NEW	TOTAL	NEW		
Lagos	19,651	0	15,250	0	204	0	4,197	1
FCT	5,758	12	4,998	14	79	0	681	0
Plateau	3,497	0	2,715	0	33	0	749	1
Oyo	3,273	5	2,497	67	40	0	736	0
Edo	2,631	0	2,495	0	107	0	29	1
Rivers	2,582	65	2,378	44	59	0	145	0
Kaduna	2,446	2	2,356	9	40	0	50	0
Ogun	1,892	9	1,733	0	28	0	131	0
Delta	1,803	1	1,737	0	49	0	17	0
Kano	1,738	0	1,675	5	54	0	9	4
Ondo	1,635	0	1,545	0	36	0	54	1
Enugu	1,289	0	1,166	0	21	0	102	10
Kwara	1,045	1	982	0	25	0	38	0
Ebonyi	1,042	0	1,008	0	30	0	4	4
Abia	898	0	872	0	8	0	18	2
Katsina	892	8	855	14	24	0	13	0
Gombe	883	0	747	0	25	0	111	6
Osun	847	0	805	0	17	0	25	3
Borno	745	0	705	0	36	0	4	6
Bauchi	704	5	687	10	14	0	3	0
Imo	577	1	547	12	12	0	18	0
Benue	481	0	413	0	10	0	58	10
Nasarawa	455	3	325	0	13	0	117	0
Bayelsa	401	0	373	0	21	0	7	3
Jigawa	325	0	308	0	11	0	6	10
Ekiti	322	0	312	7	6	0	4	1
Akwa Ibom	293	0	278	0	8	0	7	4
Niger	259	0	232	0	12	0	15	13
Adamawa	248	0	208	0	17	0	23	5
Anambra	245	7	219	0	19	0	7	0
Sokoto	162	0	145	1	17	0	0	10
Taraba	106	1	89	0	6	0	11	0
Kebbi	93	0	84	0	8	0	1	38
Cross River	87	0	74	0	9	0	4	11
Zamfara	79	0	73	0	5	0	1	3
Yobe	76	0	62	0	8	0	6	9
Kogi	5	0	3	0	2	0	0	94
<b>Total</b>	<b>59,465</b>	<b>120</b>	<b>50,951</b>	<b>183</b>	<b>1,113</b>	<b>0</b>	<b>7,401</b>	

States, including FCT, are arranged in descending order by number of total confirmed cases and then alphabetical order

# SELECTED CHARTS

Figure 2: Daily Epidemic Curve of Confirmed Cases (WK9 – WK41)

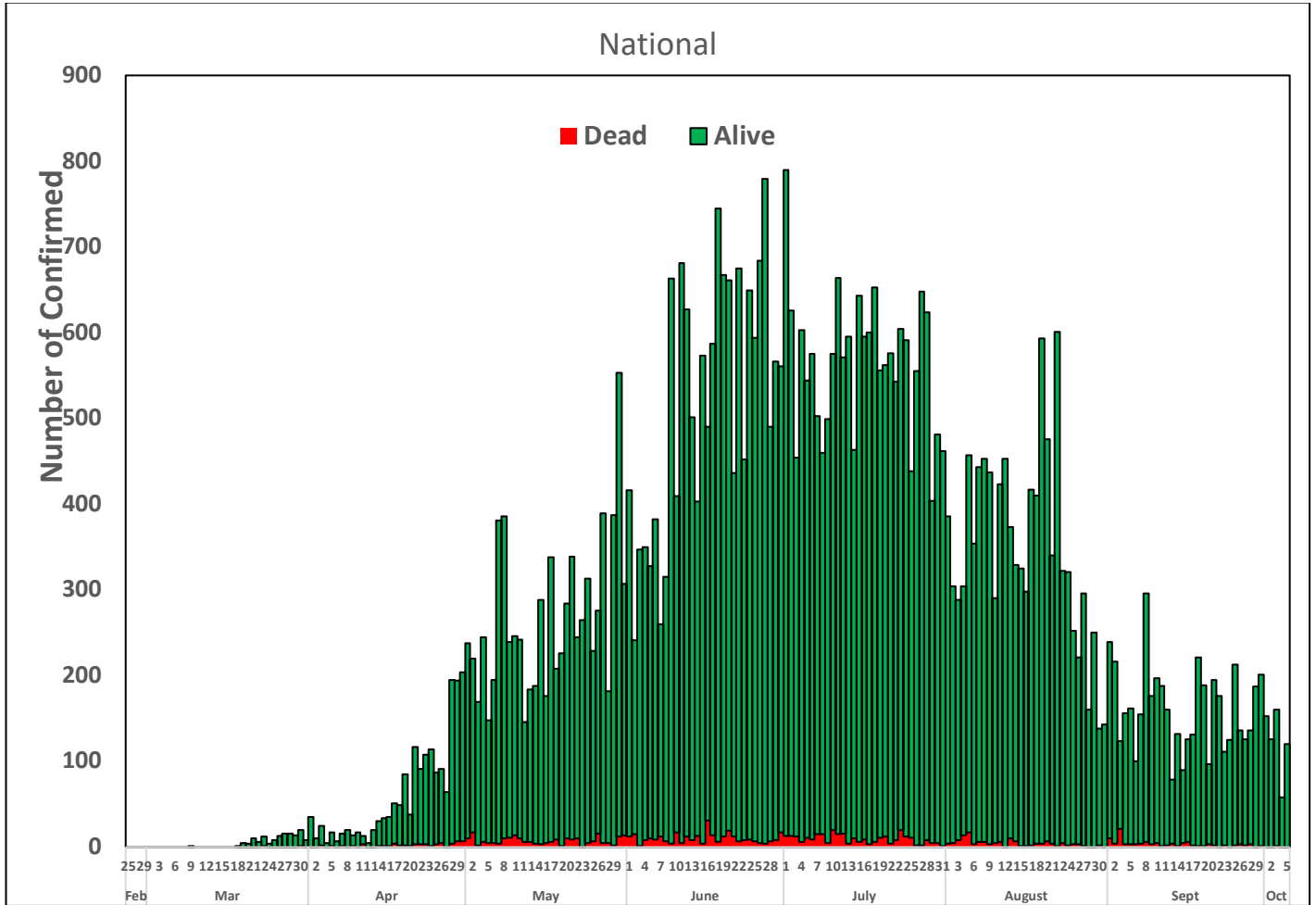
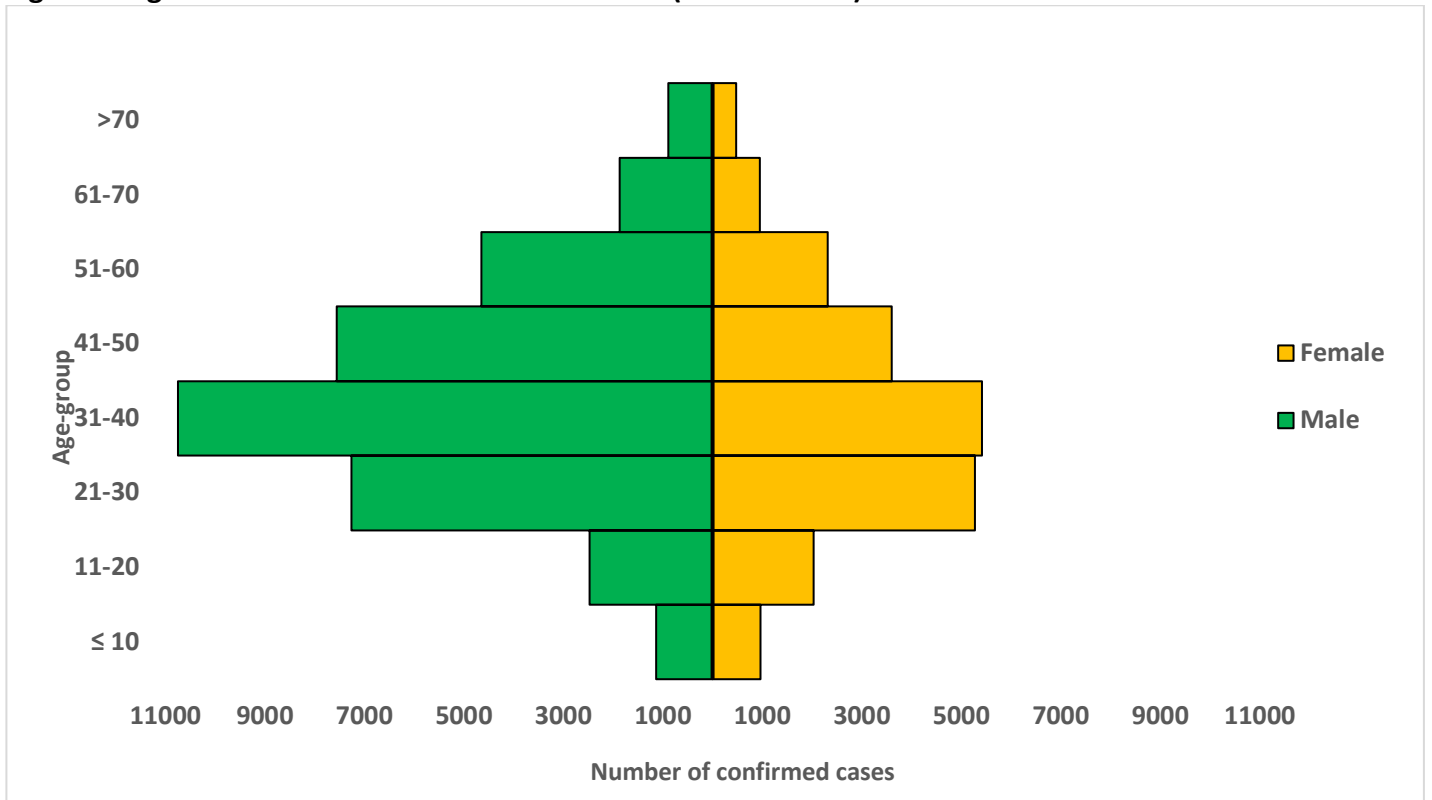


Figure 3: Age-Sex Distribution of Confirmed Cases (WK9 – WK41)



## PREPAREDNESS

Since the confirmation of the first case on 27<sup>th</sup> February 2020, the NCDC has released advisories and statements to help Nigerians and affected groups in particular to respond to the pandemic

- NCDC published second interim guidance – Infection Prevention and Control: [Recommendations during health care provision for suspected and confirmed cases of COVID-19](#)
- NCDC recently published the first edition of a quick reference guide on setting up sample collection centre - [A step by step guide on setting up a sample collection centre](#)
- NCDC has launched an online course on [Infection, Prevention and Control \(IPC\) for COVID-19](#) NCDC eLearning platform
- Ahead of forthcoming elections in the country, NCDC has issued [Guidelines for Conducting Elections During the COVID-19 Outbreak in Nigeria](#).
- To protect our elders, and those with pre-existing medical conditions, NCDC has issued an [Advisory for Vulnerable Groups](#).
- NCDC has released [guidelines on the re-opening of places for worship](#).
- NCDC has released [Strategies to Improve Surveillance for COVID-19 Guidance for States](#)
- The Nigeria Police Force has released COVID-19 operational guidelines for the [Police and other Law Enforcement Agencies in Nigeria](#)
- Guidelines have been issued for the [safe transportation of remains of persons suspected or confirmed to have died of COVID-19](#)
- Information on diagnostics of the COVID-19 virus can be found in our [detailed FAQ document](#).
- To increase our testing capacity, NCDC has issued guidelines for the [integration of private labs](#).
- Guidelines for [businesses and employers](#) have been updated.
- NCDC has updated its [case definition](#) , [community case definition](#) and [case management guide](#).
- NCDC releases periodic [public health advisories](#) to Nigerians on the COVID-19 disease.
- To adhere to post-lockdown measures, NCDC has released an [advisory on the use of face masks](#), as well as information on the [Use of Cloth face masks](#) and [how to make your cloth face masks](#).
- NCDC has released guidelines for the [management of pregnant women and nursing mothers](#) during the pandemic.
- To address burials of loved ones who die from COVID-19, guidelines have been issued to advise on the [management of dead bodies](#).
- For health centres managing cases, the following documents have been released- a guideline for the [Rational Use of Personal Protective Equipment in the care of COVID-19 cases](#).
- As part of plans to increase the testing capacity of the country, the NCDC published a [National Strategy to Scale Up Access to Coronavirus Disease Testing in Nigeria](#) document.
- The Presidential Task Force has published policies and announcements on COVID-19 [available on the website of the Presidency](#) – including presidential addresses, task force updates and information on livelihood and economic support.

## RESPONSE

On 28<sup>th</sup> February 2020, a multi-sectoral Emergency Operations Centre (EOC) was activated at Level 3 – the highest emergency level in Nigeria –led by NCDC in close coordination with the State Public Health EOCs (PHEOC).

- **Provided supportive supervision at the Infection Prevention and Control (IPC) training of case managers in Oyo and Plateau States**
- **Ongoing engagement with partners and stakeholders on support for implementating and intensifying risk communication activities in states**
- Concluded a two-day online Infection Prevention and Control (IPC) training for community health workers in Taraba and Bauchi States in collaboration with partners
- All education materials can be found via [www.covid19.ncdc.gov.ng](http://www.covid19.ncdc.gov.ng)