

COVID-19 SITUATION REPORT

SITUATION REPORT 134

Saturday, 11TH July 2020



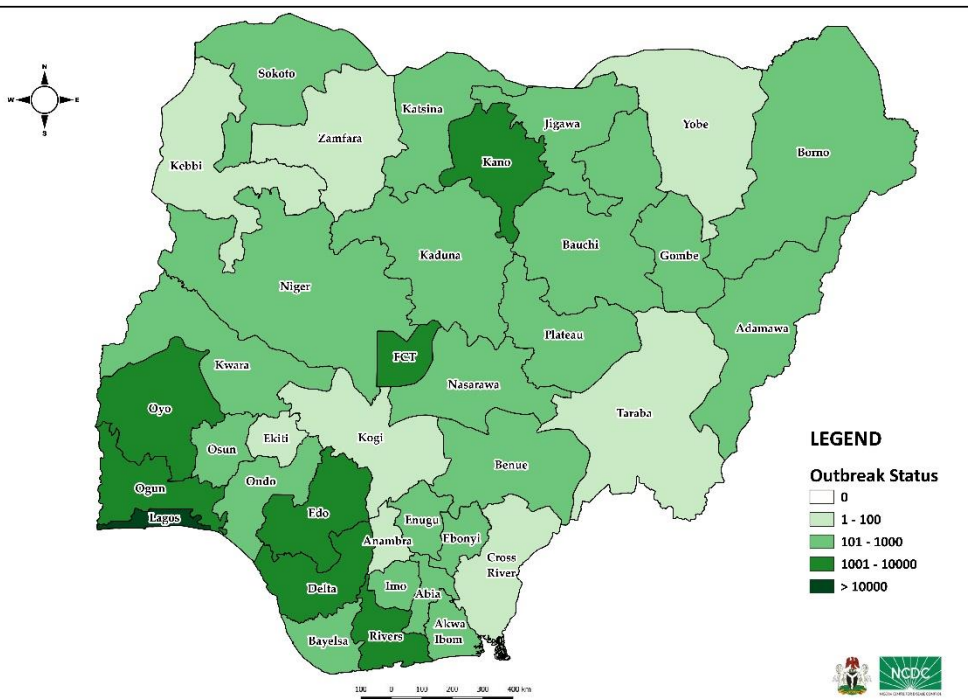
DATA AS REPORTED AND ACCURATE BY NCDC AS AT MIDNIGHT 11TH JULY 2020

HIGHLIGHTS

- Six hundred and sixty-four (**664**) confirmed cases were reported in the last 24 hours from **18** states – Lagos (224), FCT (105), Edo (85), Ondo (64), Kaduna (32), Imo (27), Osun (19), Ogun (17), Oyo (17), Plateau (17), Rivers (14), Delta (11), Adamawa (10), Enugu (7), Nasarawa (6), Abia (3), Ekiti (3) and Gombe (3).
- Three hundred and eight (**308**) cases were discharged in the last 24 hours in **nine** states – Delta (129), Oyo (67), Abia (30), Lagos (22), Gombe (20), Kaduna (14), FCT (14), Imo (8), and Rivers (4).
- **Fifteen (15)** deaths were recorded in the last 24 hours in **three** states – Lagos (13), FCT (1), Ondo (1)
- All **36** states in Nigeria, and the FCT, have reported a confirmed case.

STATE OF THE NATION

Figure 1: Map of Nigeria showing 35 states and FCT affected by COVID-19



SITUATION UPDATES

Total (New in the last 24 hours)

SAMPLES TESTED

181,248 (2,983)

CONFIRMED CASES

31,987 (664)

AFFECTED STATES INCLUDING FCT

37

DISCHARGED CASES

13,103 (308)

CONFIRMED FATALITIES

724 (15) – 2.3% CFR

DEMOGRAPHICS

MALE – 21,036 (66%)

FEMALE – 10,951 (34%)

MOST AFFECTED AGE GROUP

31 - 40 (24%)

PERSONS OF INTEREST

10,794 (Total)

10,781 (99.9% - Exceeded Follow Up)

PROVENANCE

TRAVEL HISTORY – 481 (2%)

CONTACTS – 8,074 (25%)

UNKNOWN EXPOSURE – 23,432 (73%)

GLOBAL UPDATES

TOTAL NUMBER OF CASES

12,322,395 (556,335 deaths)

COUNTRIES & TERRITORIES AFFECTED*

213

*Excluding the 2 International Conveyances

GENERAL FACT SHEET – DATA AS AT 11th JULY 2020

Table 1: States with reported laboratory-confirmed COVID-19 cases, recoveries, deaths and days since last reported case

STATES	CONFIRMED CASES		DISCHARGED CASES		DEATHS		TOTAL ACTIVE CASES	DAYS SINCE LAST REPORTED CASE
	CUMULATIVE	NEW	CUMULATIVE	NEW	CUMULATIVE	NEW		
Lagos	12,275	224	1,786	22	160	13	10,329	0
FCT	2,538	105	747	14	36	1	1,755	0
Oyo	1,706	17	992	67	19	0	695	0
Edo	1,678	85	929	0	57	0	692	0
Delta	1,359	11	583	129	31	0	745	0
Rivers	1,357	14	851	4	46	0	460	0
Kano	1,303	0	1,030	0	52	0	221	1
Ogun	1,080	17	705	0	22	0	353	0
Kaduna	978	32	636	14	12	0	330	0
Ondo	670	64	124	0	21	1	525	0
Katsina	655	0	441	0	23	0	191	1
Borno	586	0	455	0	35	0	96	1
Gombe	530	3	407	20	21	0	102	0
Bauchi	519	0	498	0	13	0	8	3
Plateau	516	17	242	0	16	0	258	0
Ebonyi	508	0	497	0	6	0	5	1
Enugu	476	7	263	0	14	0	199	0
Abia	405	3	295	30	3	0	107	0
Imo	386	27	69	8	8	0	309	0
Jigawa	321	0	308	0	11	0	2	1
Kwara	311	0	168	0	12	0	131	2
Bayelsa	299	0	153	0	18	0	128	2
Nasarawa	244	6	113	0	8	0	123	0
Osun	231	19	84	0	7	0	140	0
Sokoto	153	0	135	0	16	0	2	7
Niger	135	0	108	0	7	0	20	1
Akwa Ibom	134	0	71	0	3	0	60	2
Benue	121	0	35	0	6	0	80	4
Adamawa	110	10	71	0	7	0	32	0
Anambra	93	0	65	0	9	0	19	3
Kebbi	86	0	63	0	7	0	16	4
Zamfara	76	0	71	0	5	0	0	54
Yobe	62	0	51	0	8	0	3	2
Ekiti	49	3	40	0	2	0	7	0
Taraba	27	0	11	0	0	0	16	4
Cross River	5	0	3	0	1	0	1	5
Kogi	5	0	3	0	2	0	0	8
Total	31,987	664	13,103	308	724	15	18,160	

States, including FCT, are arranged in descending order by number of total confirmed cases and then alphabetical order

SELECTED CHARTS

Figure 2: Daily Epidemic Curve of Confirmed Cases (WK9 – WK28)

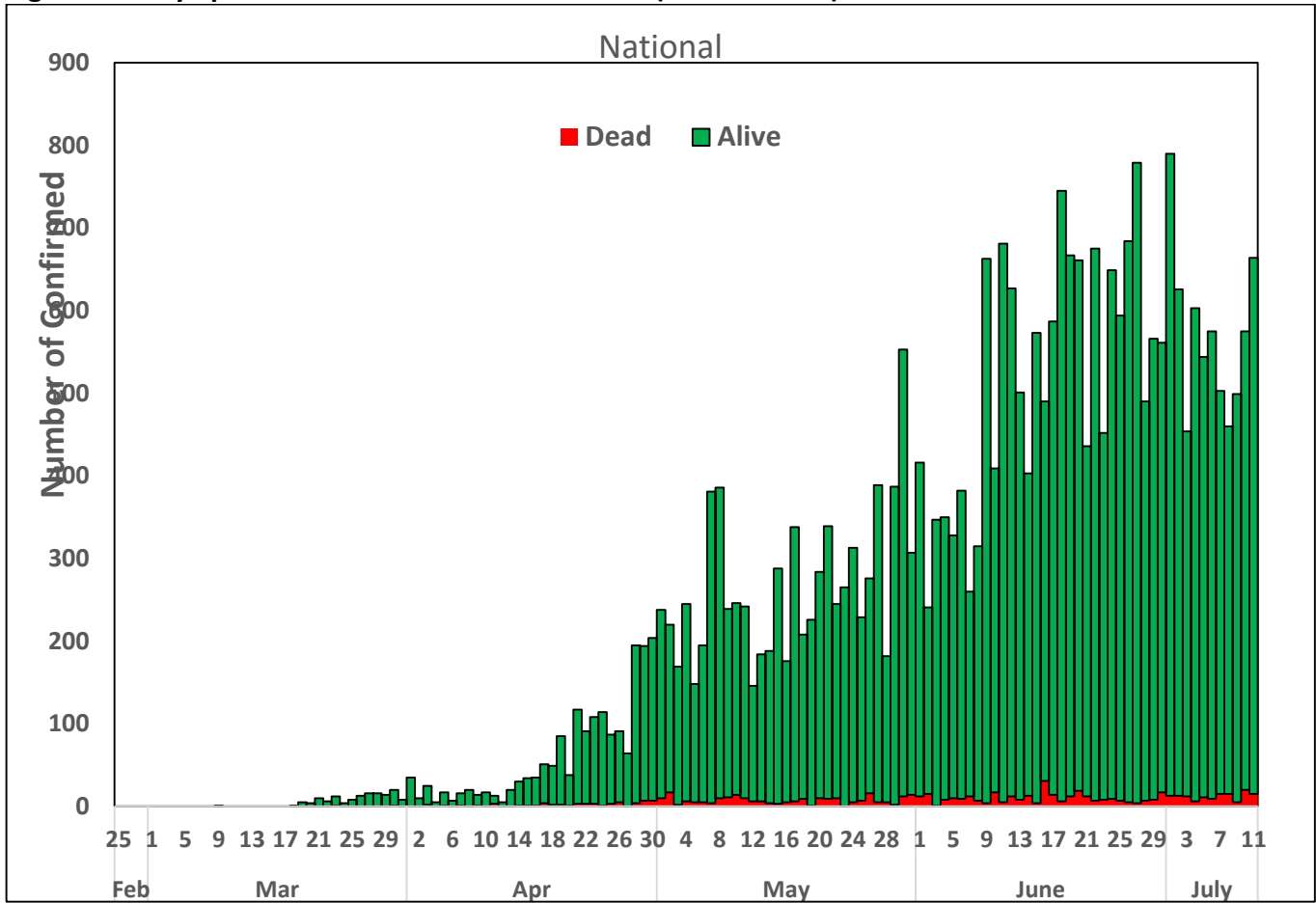
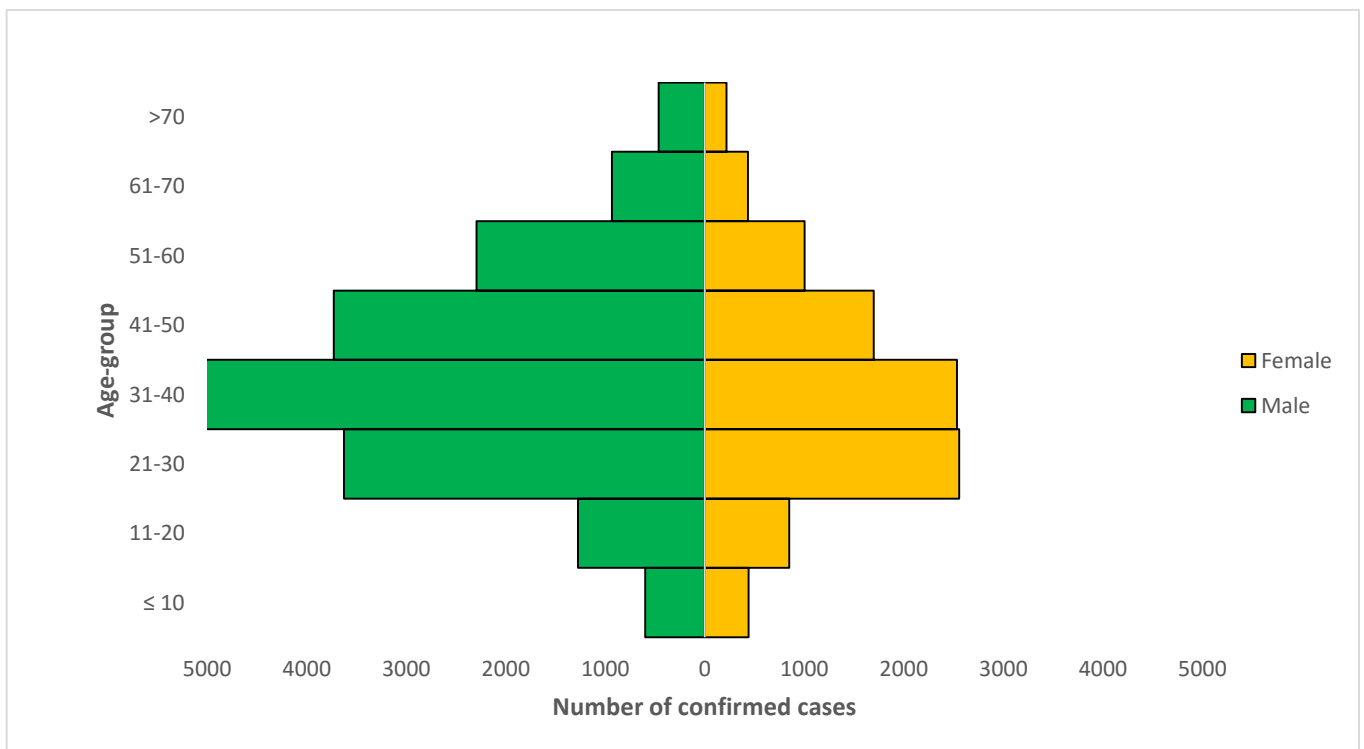


Figure 3: Age-Sex Distribution of Confirmed Cases (WK9 – WK28)



PREPAREDNESS

Since the confirmation of the first case on 27th February 2020, the NCDC has released advisories and statements to help Nigerians and affected groups in particular to respond to the pandemic

- NCDC has launched an online course on [Infection, Prevention and Control \(IPC\) for COVID-19](#) NCDC eLearning platform
- Ahead of forthcoming elections in the country, NCDC has issued [Guidelines for Conducting Elections During the COVID-19 Outbreak in Nigeria](#).
- To protect our elders, and those with pre-existing medical conditions, NCDC has issued an [Advisory for Vulnerable Groups](#).
- NCDC has released [guidelines on the re-opening of places for worship](#).
- The Nigeria Police Force has released COVID-19 operational guidelines for the [Police and other Law Enforcement Agencies in Nigeria](#)
- NCDC and the Department of Hospital Services (Federal Ministry of Health) have updated the [case management guidelines](#) (version 3) with reviewed changes such as the discharge criteria and medication being used for the treatment of cases
- Guidelines have been issued for the [safe transportation of remains of persons suspected or confirmed to have died of COVID-19](#)
- Information on diagnostics of the COVID-19 virus can be found in our [detailed FAQ document](#).
- To increase our testing capacity, NCDC has issued guidelines for the [integration of private labs](#).
- Guidelines for [businesses and employers](#) have been updated.
- NCDC has updated its [case definition](#) , [community case definition](#) and [case management guide](#).
- NCDC releases periodic [public health advisories](#) to Nigerians on the COVID-19 disease.
- To adhere to post-lockdown measures, NCDC has released an [advisory on the use of face masks](#), as well as information on the [Use of Cloth face masks](#) and [how to make your cloth face masks](#).
- NCDC has released guidelines for the [management of pregnant women and nursing mothers](#) during the pandemic.
- To address burials of loved ones who die from COVID-19, guidelines have been issued to advise on the [management of dead bodies](#).
- For health centres managing cases, the following documents have been released- a guideline for the [Rational Use of Personal Protective Equipment in the care of COVID-19 cases](#).
- As part of plans to increase the testing capacity of the country, the NCDC published a [National Strategy to Scale Up Access to Coronavirus Disease Testing in Nigeria](#) document.
- The Presidential Task Force has published policies and announcements on COVID-19 [available on the website of the Presidency](#) – including presidential addresses, task force updates and information on livelihood and economic support.

RESPONSE

On 28th February 2020, a multi-sectoral Emergency Operations Centre (EOC) was activated at Level 3 – the highest emergency level in Nigeria –led by NCDC in close coordination with the State Public Health EOCs (PHEOC).

- **Conducted assessment of two additional treatment centres in Kaduna State**
- **Ongoing capacity building of states Infection Prevention and Control (IPC) trainers through webinars**
- **Ongoing monitoring of stock status of commodities deployed to laboratories and treatment centres to forestall stockout of critical commodities**
- **Obtained commitment from stakeholders on the rapid resolution of call centre challenges across states**
- Finalised and approved 18 States` Incident Action Plan (IAP) for ~~₦~~100M NCDC/World Bank financial support on implementation of prioritised activities
- Deployment of Grant Agreement (GA) to Benue and Rivers States

- Cumulatively, 1960 Persons of Interest (POIs)/returnees have been received since inception of the revised protocol. Of this, 1325 (67.6%) samples were collected. From the results released positives were 145 (10.9%), negatives were 977 (73.7%) while 203 (15.3%) are pending in Lagos State
- Tracking of daily sample collection from states
- Ongoing optimisation of a new Polymerase Chain Reaction (PCR) laboratory in Abia State
- Ongoing investigation of Healthcare Associated Infection (HAI) in Federal Medical Centre (FMC), Bida and Enugu health facilities
- Conducted weekly refresher trainings for healthcare workers in Treatment Centres (TCs) in Kebbi State
- Deployment of Personal Protective Equipment (PPEs) and commodities to laboratories within the network in Ibadan, Kaduna and Katsina
- Supplied PPE and laboratory commodities to sample collection sites across FCT
- Conducted community assessment on willingness to adhere to Non-Pharmaceutical Interventions (NPIs) for COVID-19 in Kano, Rivers and Lagos
- All education materials can be found via www.covid19.ncdc.gov.ng