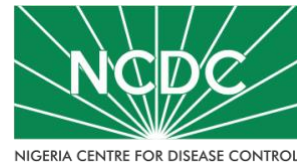


COVID-19 SITUATION REPORT

SITUATION REPORT 169

Saturday, 15th August 2020



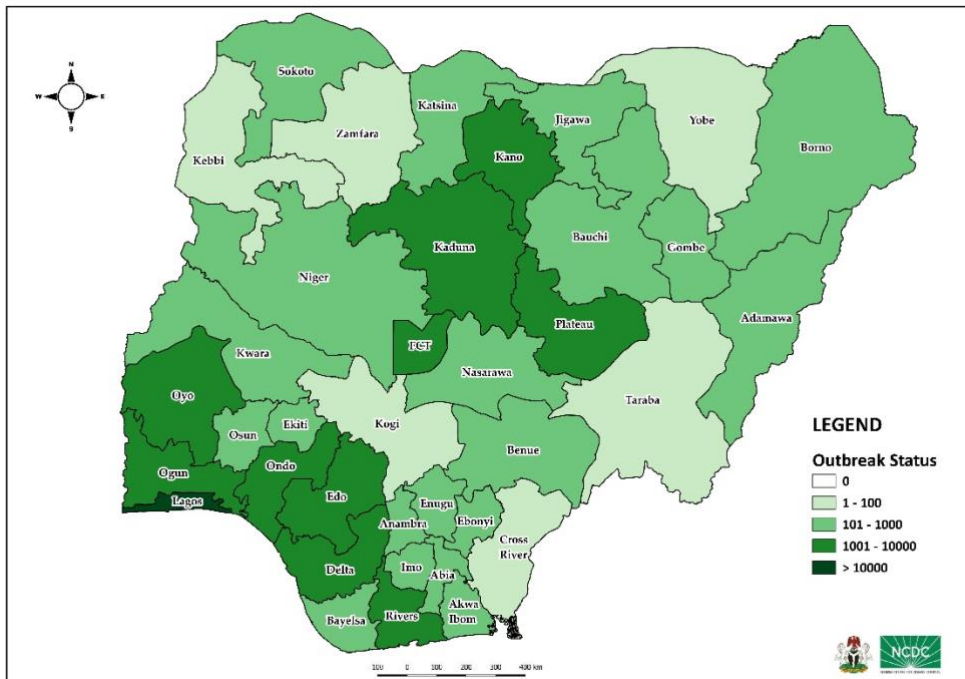
DATA AS REPORTED AND ACCURATE BY NCDC AS AT MIDNIGHT 15TH AUGUST 2020

HIGHLIGHTS

- Three hundred and twenty-five (**325**) confirmed cases were reported in the last 24 hours from **20** states – Lagos (87), FCT (49), Gombe (28), Ebonyi (20), Plateau (19), Kwara (18), Enugu (17), Imo (12), Rivers (12), Kaduna (11), Ogun (10), Edo (9), Oyo (9), Ondo (8), Osun (8), Ekiti (4), Bauchi(1), Borno (1), Kano(1) and Nasarawa (1).
- Two hundred and ninety-two (**292**) discharges have been reported in the last 24 hours in **15** states – Enugu (90), Osun (51), Kano (32), Ogun (24), Rivers (23), Plateau (22), Kaduna (10), Lagos (10), Ekiti (8), Edo (7), FCT (5), Ondo (4), Cross River (3), Gombe (2) and Bauchi(1).
- One (**1**) death was reported in the last 24 hours in **one** state – Oyo (1).
- All **36** states in Nigeria, and the FCT, have reported a confirmed case.

STATE OF THE NATION

Figure 1: Map of Nigeria showing 36 states and FCT affected by COVID-19



SITUATION UPDATES

Total (New in the last 24 hours)

SAMPLES TESTED

350,589 (3,044)

CONFIRMED CASES

48,770 (325)

AFFECTED STATES INCLUDING FCT

37

DISCHARGED CASES

36,290 (292)

CONFIRMED FATALITIES

974 (1) – 2.0% CFR

DEMOGRAPHICS

MALE – 31,299 (64%)

FEMALE – 17,471 (36%)

MOST AFFECTED AGE GROUP

31 - 40 (25%)

PERSONS OF INTEREST

11,423 (Total)

11,217 (98.2% - Exceeded Follow Up)

PROVENANCE

TRAVEL HISTORY – 848 (2%)

CONTACTS – 11,860 (24%)

UNKNOWN EXPOSURE – 36,062 (74%)

GLOBAL UPDATES

TOTAL NUMBER OF CASES

21,026,758 (755,786 deaths)

COUNTRIES & TERRITORIES AFFECTED*

216

*Excluding the 2 International Conveyance

GENERAL FACT SHEET – DATA AS AT 15th AUGUST 2020

Table 1: States with reported laboratory-confirmed COVID-19 cases, recoveries, deaths and days since last reported case

STATES	CONFIRMED CASES		DISCHARGED CASES		DEATHS		TOTAL ACTIVE CASES	DAYS SINCE LAST REPORTED CASE
	TOTAL	NEW	TOTAL	NEW	TOTAL	NEW		
Lagos	16,456	87	14,467 ^a	10	201	0	1,788	0
FCT	4,714	49	1,347	5	46	0	3,321	0
Oyo	2,952	9	1,530	0	33	1	1,389	0
Edo	2,423	9	2,138	7	100	0	185	0
Rivers	2,005	12	1,808	23	56	0	141	0
Kaduna	1,766	11	1,546	10	12	0	208	0
Plateau	1,708	19	822	22	24	0	862	0
Kano	1,678	1	1,366	32	54	0	258	0
Delta	1,639	0	1,440	0	44	0	155	1
Ogun	1,545	10	1,319	24	24	0	202	0
Ondo	1,381	8	774	4	28	0	579	0
Enugu	997	17	810	90	19	0	168	0
Ebonyi	931	20	852	0	27	0	52	0
Kwara	906	18	593	0	23	0	290	0
Katsina	746	0	457	0	24	0	265	12
Osun	737	8	419	51	14	0	304	0
Borno	703	1	577	0	36	0	90	0
Abia	677	0	546	0	5	0	126	2
Gombe	676	28	579	2	23	0	74	0
Bauchi	582	1	538	1	14	0	30	0
Imo	506	12	168	0	10	0	328	0
Benue	430	0	139	0	9	0	282	4
Nasarawa	374	1	272	0	12	0	90	0
Bayelsa	352	0	321	0	21	0	10	1
Jigawa	322	0	308	0	11	0	3	30
Akwa Ibom	246	0	207	0	8	0	31	1
Niger	229	0	168	0	12	0	49	1
Ekiti	204	4	93	8	3	0	108	0
Adamawa	185	0	104	0	12	0	69	8
Anambra	156	0	131	0	18	0	7	4
Sokoto	154	0	138	0	16	0	0	21
Kebbi	90	0	82	0	8	0	0	25
Taraba	78	0	55	0	4	0	19	4
Zamfara	77	0	71	0	5	0	1	28
Cross River	73	0	45	3	8	0	20	5
Yobe	67	0	57	0	8	0	2	16
Kogi	5	0	3	0	2	0	0	43
Total	48,770	325	36,290	292	974	1	11,506	

States, including FCT, are arranged in descending order by number of total confirmed cases and then alphabetical order

note

^a All discharges reported in Lagos are community recoveries over the last two weeks reported in line with new case management guidelines

SELECTED CHARTS

Figure 2: Daily Epidemic Curve of Confirmed Cases (WK9 – WK33)

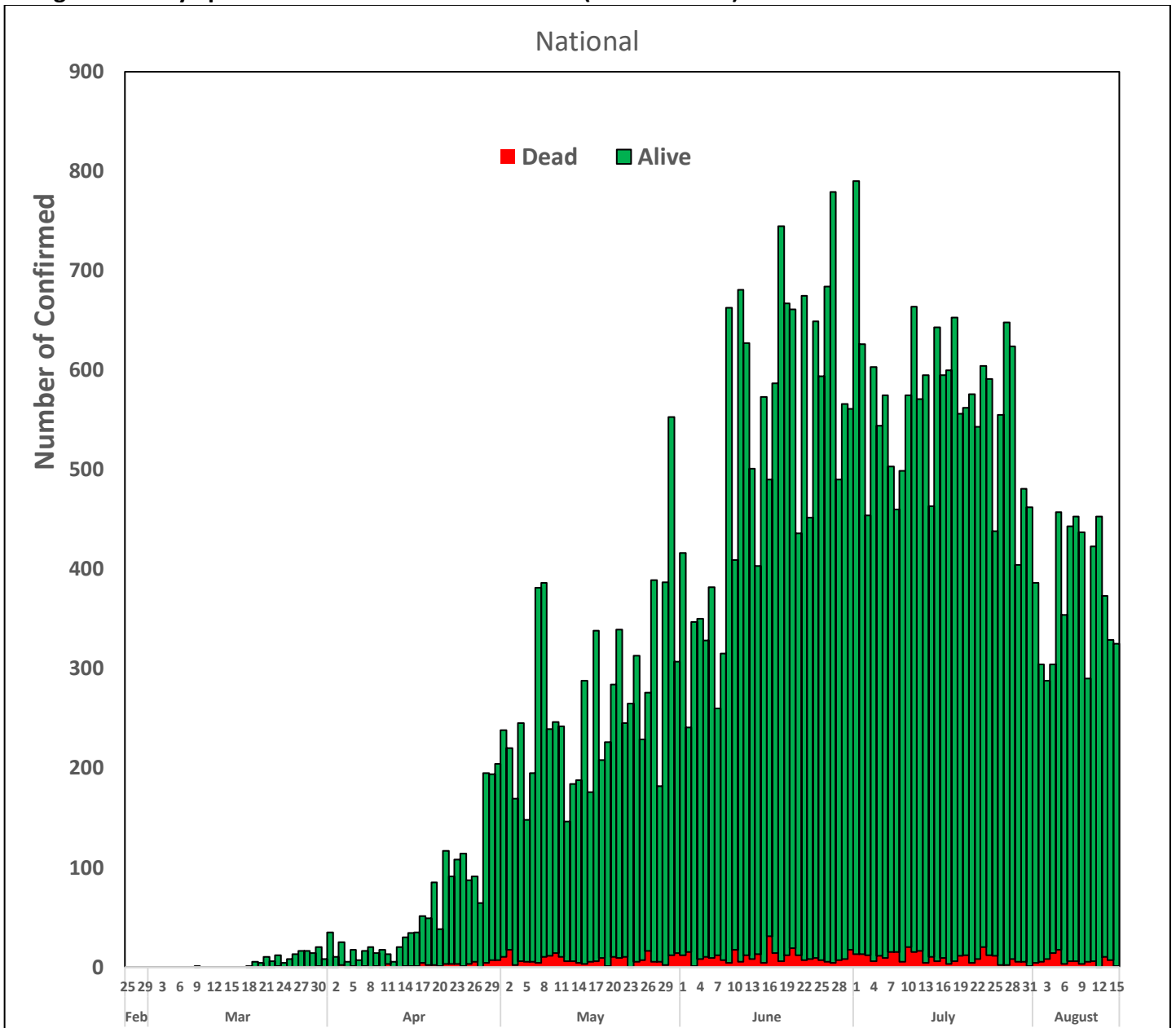
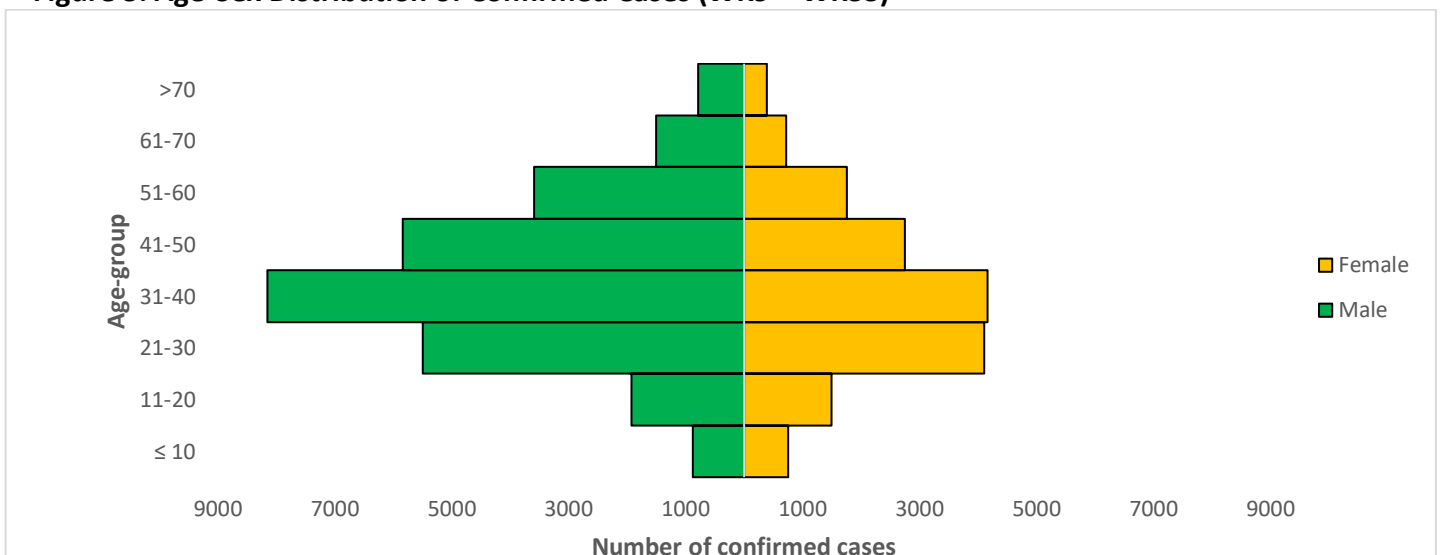


Figure 3: Age-Sex Distribution of Confirmed Cases (WK9 – WK33)



PREPAREDNESS

Since the confirmation of the first case on 27th February 2020, the NCDC has released advisories and statements to help Nigerians and affected groups in particular to respond to the pandemic

- NCDC has launched an online course on [Infection, Prevention and Control \(IPC\) for COVID-19](#) NCDC eLearning platform
- Ahead of forthcoming elections in the country, NCDC has issued [Guidelines for Conducting Elections During the COVID-19 Outbreak in Nigeria](#).
- To protect our elders, and those with pre-existing medical conditions, NCDC has issued an [Advisory for Vulnerable Groups](#).
- NCDC has released [guidelines on the re-opening of places for worship](#).
- NCDC has released [Strategies to Improve Surveillance for COVID-19 Guidance for States](#)
- The Nigeria Police Force has released COVID-19 operational guidelines for the [Police and other Law Enforcement Agencies](#) in Nigeria
- Guidelines have been issued for the [safe transportation of remains of persons suspected or confirmed to have died of COVID-19](#)
- Information on diagnostics of the COVID-19 virus can be found in our [detailed FAQ document](#).
- To increase our testing capacity, NCDC has issued guidelines for the [integration of private labs](#).
- Guidelines for [businesses and employers](#) have been updated.
- NCDC has updated its [case definition](#) , [community case definition](#) and [case management guide](#).
- NCDC releases periodic [public health advisories](#) to Nigerians on the COVID-19 disease.
- To adhere to post-lockdown measures, NCDC has released an [advisory on the use of face masks](#), as well as information on the [Use of Cloth face masks](#) and [how to make your cloth face masks](#).
- NCDC has released guidelines for the [management of pregnant women and nursing mothers](#) during the pandemic.
- To address burials of loved ones who die from COVID-19, guidelines have been issued to advise on the [management of dead bodies](#).
- For health centres managing cases, the following documents have been released- a guideline for the [Rational Use of Personal Protective Equipment in the care of COVID-19 cases](#).
- As part of plans to increase the testing capacity of the country, the NCDC published a [National Strategy to Scale Up Access to Coronavirus Disease Testing in Nigeria](#) document.
- The Presidential Task Force has published policies and announcements on COVID-19 [available on the website of the Presidency](#) – including presidential addresses, task force updates and information on livelihood and economic support.

RESPONSE

On 28th February 2020, a multi-sectoral Emergency Operations Centre (EOC) was activated at Level 3 – the highest emergency level in Nigeria –led by NCDC in close coordination with the State Public Health EOCs (PHEOC).

- **Received a total of 455 Persons of Interest (POIs)/returnees: United Arab Emirate (284), Uganda (132), Israel (26) and Cote d'Ivoire (13) between 10th-12th of August 2020**
- **All POIs/returnees were received, screened and given the travellers kit and self-isolation guidelines on arrival at the Nnamdi Azikiwe International Airport Abuja (NAIA)**
- **All returnees were issued COVID-19 test appointment**
- **Conducted mortality reviews in three designated treatment centres, University of Abuja Teaching Hospital (UATH), Gwagwalada; Lagos University Teaching Hospital (LUTH) and National Hospital Abuja (NHA)**
- **Activated new GeneXpert laboratory in Makurdi Benue State**
- **Conducted a step-down training on Infection Prevention and Control (IPC) for home-based care in Lagos State**
- **Trained Red Cross personnel on the use of community-based information management tools for stigma and rumour management**

- Held a high level virtual strategic meeting with State Epidemiologists to address key issues towards improving response across states
- Set up four (4) sample collection sites hotspot Local Government Areas (LGAs) in Lagos State
- Conducted a 2-day virtual Biosafety and Biosecurity training for 15 laboratorians from eight (8) laboratories in the network
- Ongoing decontamination and fumigation of all private and public schools in Abia State
- Supported the development of guidelines for standard Organisation of Nigeria
- All education materials can be found via www.covid19.ncdc.gov.ng