

# YELLOW FEVER SITUATION REPORT



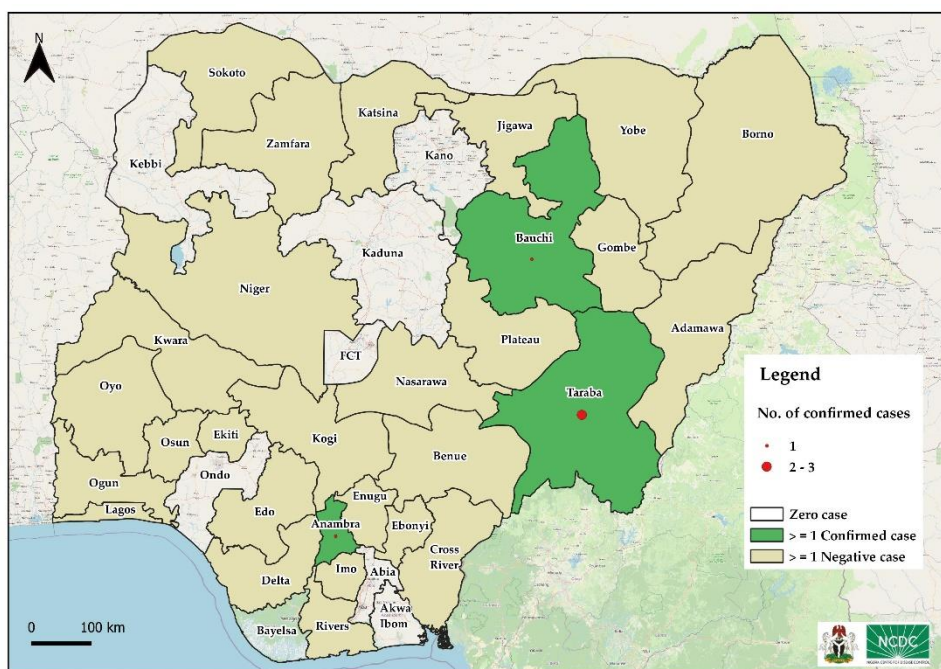
|                    |   |
|--------------------|---|
| Serial Number: 010 | January 2022 Monthly Sitrep                 |
| Epi Week:          | 01 - 04 as at 31 <sup>st</sup> January 2022 |
| Reporting Month:   | January, 2022                               |

## REPORTING MONTH: JANUARY 2022

### HIGHLIGHTS

#### REPORTING PERIOD: 1<sup>ST</sup> – 31<sup>ST</sup> JANUARY, 2022

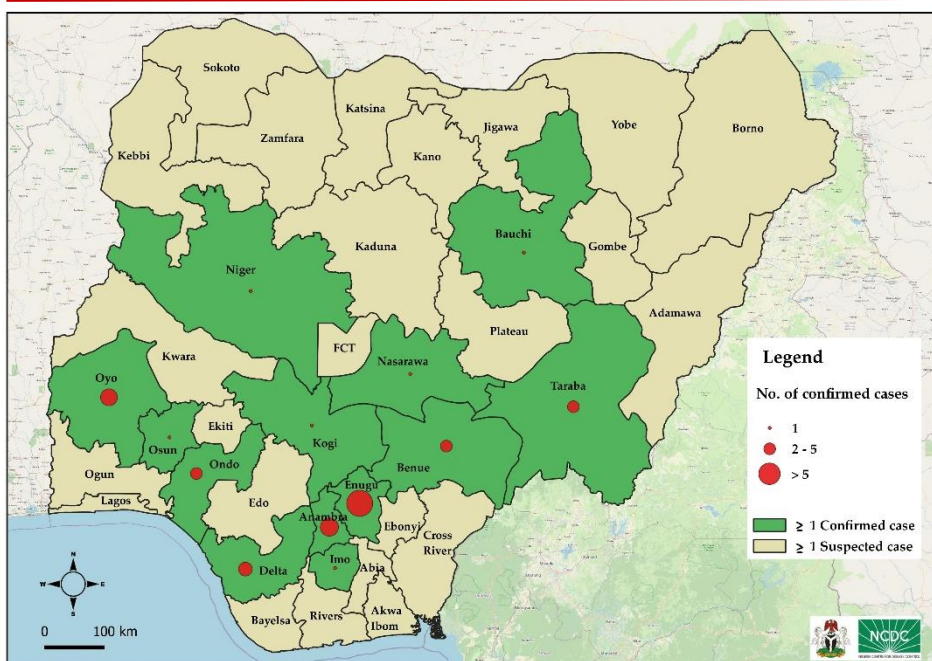
- The Nigeria Centre for Disease Control (NCDC) continues to monitor reports of yellow fever cases in Nigeria.
- A total of 150 suspected cases were reported from 85 Local Government Areas (LGAs) across 29 states: Adamawa (3), Anambra (17), Bauchi (9), Benue (3), Borno (2), Cross River (1), Delta (1), Ebonyi (2), Edo (4), Ekiti (1), Enugu (9), Gombe (5), Imo (13), Jigawa (7), Katsina (8), Kogi (2), Kwara (4), Lagos (3), Nassarawa (4), Niger (7), Ogun (1), Osun (3), Oyo (10), Plateau (11), Rivers (3), Sokoto (4), Taraba (8) Yobe (3) and Zamfara (2).
- Sixty-nine (46%) cases of the suspected were 2022 cases.
- Three (3) presumptive positive results were recorded from; University of Nigeria Teaching Hospital (UNTH) Enugu (2) and University of Benin Teaching Hospital (UBTH) Benin City (1). These cases were reported from Edo (1), Imo (2) States.
- Five (5) new confirmed cases were confirmed at Institut Pasteur (IP) Dakar. These cases were reported from Taraba (3), Anambra (1), Bauchi (1)
- Two deaths were recorded among suspected cases
- One death was recorded among confirmed cases from Taraba State.



|   |  |
|---|--|
| <b>150</b><br>SUSPECTED<br>CASES            | <b>29</b><br>STATES WITH<br>SUSPECTED<br>CASES             |
| <b>5</b><br>CONFIRMED<br>CASES              | <b>3</b><br>STATES WITH<br>CONFIRMED<br>CASES              |
| <b>1</b><br>DEATHS IN<br>CONFIRMED<br>CASES | <b>1</b><br>STATES WITH<br>DEATHS IN<br>CONFIRMED<br>CASES |

## CUMMULATIVE FOR 1<sup>ST</sup> JANUARY 2021 – 31<sup>ST</sup> JANUARY, 2022

- Cumulatively from 1<sup>st</sup> January – 31<sup>st</sup> December 2021, a total of 2,202 suspected cases have been reported from 37 states including FCT in 513 LGAs
- The cases were reported from the following states: Abia (50), Adamawa [51], Akwa Ibom [8], Anambra [194], Bauchi [104], Bayelsa [34], Benue [70], Borno [208], Cross River [22], Delta [41], Ebonyi (51), Edo [57], Ekiti [21], Enugu [145], FCT Abuja [13], Gombe (12), Imo [102], Jigawa [57], Kaduna (4), Kano [22], Katsina [219], Kebbi [38], Kogi [21], Kwara [34], Lagos [13], Nasarawa [39], Niger [55], Ogun [40], Ondo [59], Osun [28], Oyo [93], Plateau [71], Rivers [36], Sokoto [13], Taraba [43], Yobe [116] and Zamfara [18] States
- All the suspected cases were reported from 513 LGAs across the 36 states and FCT. See Table (1)
- Total of 75 presumptive positive and 17 inconclusive samples were recorded from the Nigeria Laboratories
- Presumptive positives were recorded from CPHL Lagos (35), NRL Abuja (15), MDH Abuja (9), UNTH Enugu (10), YDMH (2) and UBTH (4); these cases were reported from Adamawa (1), Anambra (13), Bauchi (2), Benue (7), Borno (5), Cross River (2), Delta (5), Edo (1), Enugu (15), Imo (4), Kano (1), Katsina (2), Kebbi (1), Kogi (1), Kwara (1), Niger (1), Ondo (3), Oyo (5), Plateau (1), and Rivers (1), Taraba (3)
- Eighteen (18) Inconclusive results were reported CPHL (8), NRL (7), MDH (1), UBTH (1). These cases were reported from Adamawa (1), Bauchi (2), Borno (3), Cross River (1), Ebonyi (1), Enugu (4), Nasarawa (1), Ondo (2), Osun (1), Oyo (1), Yobe (1). These cases have been sent to IP Dakar for confirmation.
- Forty-six (47) confirmed cases have been reported from IP Dakar from: **Anambra-7** [Ekwusigo (1), Idemili North (2), Idemili South (1), Onitsha North (1), Nnewi North (1), Awka South (1)], **Bauchi-1** [Itas/Gadua (1)], **Benue-3** [Gwer West (2), Ushongo (1)], **Delta-4** [Aniocha South (1), Ika South (2), Patani (1)], **Enugu-15** [Nkanu East (11), Nkanu West (1), Udenu (1), Ezeagu (1), Igbo Eze North (1)], **Imo-1** [Ideato North (1)], **Kogi -1** [Okene (1)], **Nasarawa -1** [Akwanga (1)], **Niger -1** [Munya (1)], **Oyo-6** [Ido (2), Ona ara (1), Orelope (1), Oyo East (1), Akinyele (1)] and **Ondo -3** [Ifedore (1), Ondo West (1), Akoko South West (1)], **Osun-1** [Irewole (1)], **Taraba-3** [Wukari(1), Jalingo(2)]
- Fifteen (32%) of the 47 confirmed cases were from Enugu State
- Twelve deaths were recorded from Adamawa (1), Anambra (2), Bauchi (1), Benue (1), Enugu (1), Imo (2), Katsina (1), Kogi (1), and Osun (1), Taraba (1) among suspected cases (**CFR=0.5%**)
- Three deaths among confirmed cases from Anambra (1), Osun (1) and Taraba (1); **CFR (6.4%)**
- Male to female ratio was with males 1,186 (53.8%) and females 1,016 (46.1%)
- Seventy-nine percent of cases were predominantly aged 30 years and below
- Three hundred and eight (14.0%) of suspected cases had at least one dose of yellow fever vaccine while 14 (30%) among confirmed cases had at least one dose of yellow fever vaccine
- The NCDC is coordinating response activities through the National Multi-agency Yellow Fever Technical Working Group (YF TWG)



2,202

SUSPECTED  
CASES

37

STATES WITH  
SUSPECTED  
CASES

47

CONFIRMED  
CASES

14

STATES WITH  
CONFIRMED  
CASES

3

DEATHS IN  
CONFIRMED  
CASES

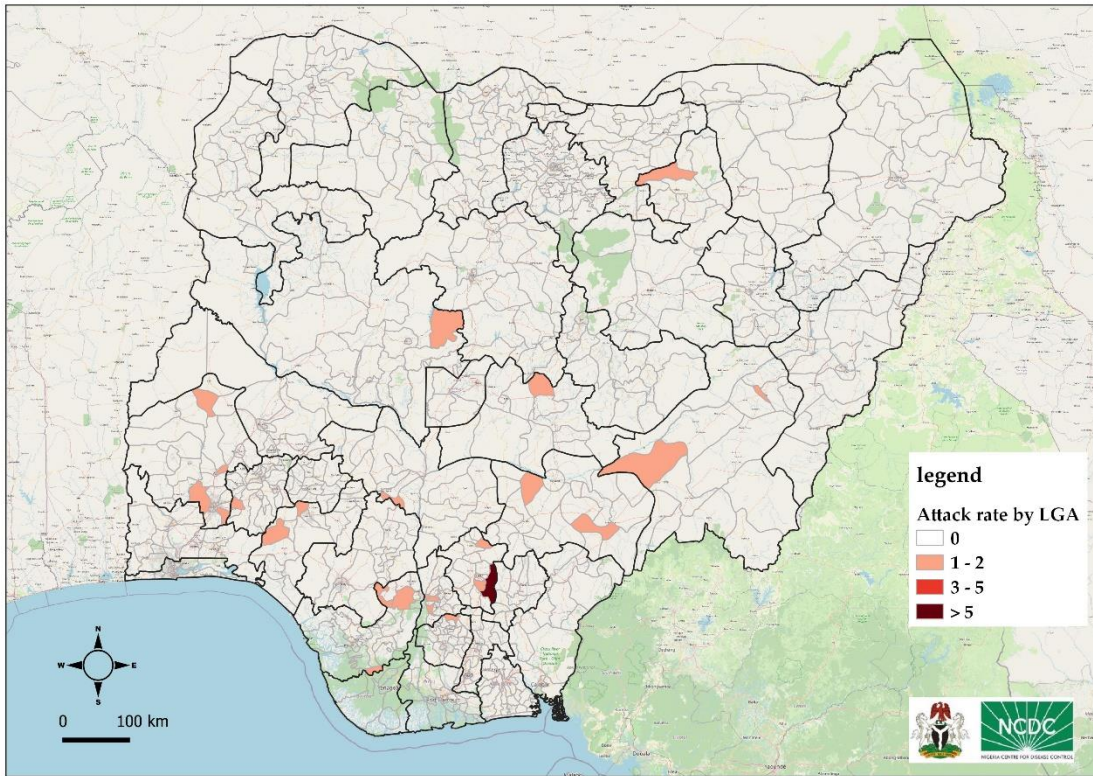
3

STATES WITH  
DEATHS IN  
CONFIRMED  
CASES

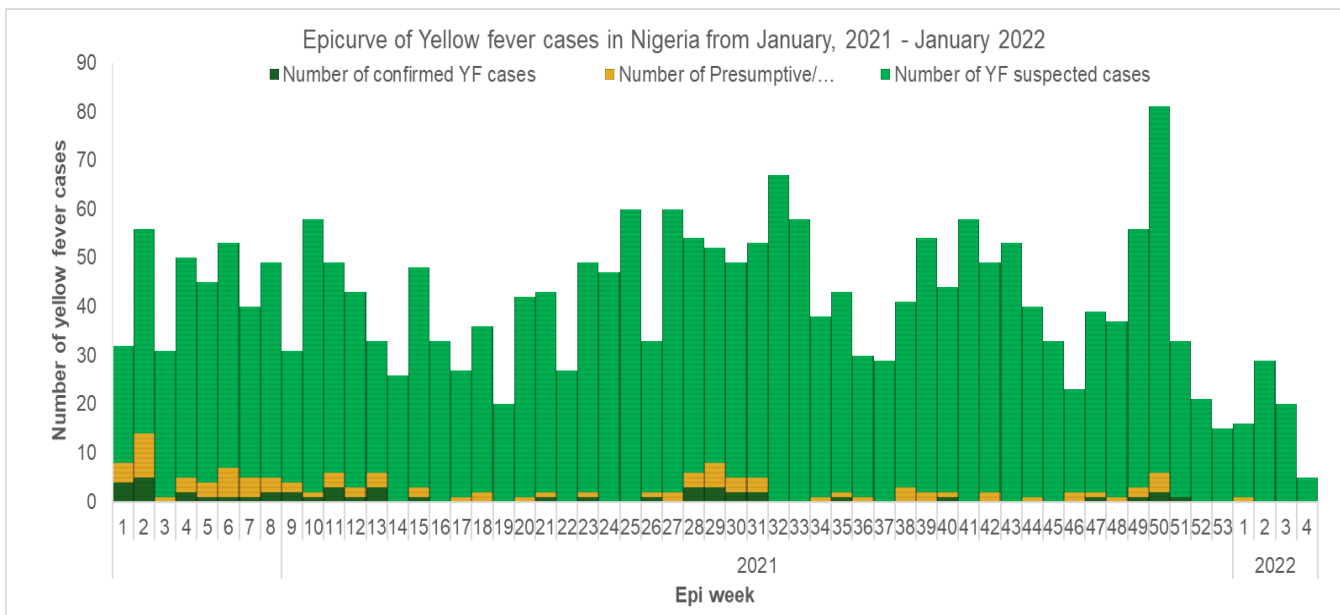
**Table 1: Summary of yellow fever cases in Nigeria from January 2021 - January 2022**

| State        | # Suspected Cases | # LGAs with suspected cases | # LGAs with confirmed cases | Laboratory Results                           |  |                       |                            |                       | Deaths                                   |                                   |
|--------------|-------------------|-----------------------------|-----------------------------|--|--|-----------------------|----------------------------|-----------------------|--|-----------------------------------|
|              |                   |                             |                             | Samples positive (IgM) & Inconclusive in NG) | LGAs with positive (IgM) & Inconclusive in NG) | Confirmed Cases (PCR) | Confirmed Cases (IP Dakar) | Total Confirmed Cases | # Deaths among Confirmed Cases [CFR] (%) | # Deaths among All Cases [CFR](%) |
| Abia         | 51                | 12                          | -                           | -  | -  | -                     | -                          | -                     | -  | -                                 |
| Adamawa      | 51                | 18                          | -                           | 2  | 2  | -                     | -                          | -                     | -  | 1                                 |
| Akwa Ibom    | 8                 | 7                           | -                           | -  | -  | -                     | -                          | -                     | -  | -                                 |
| Anambra      | 194               | 21                          | 6                           | 13   | 9  | -                     | 7                          | 7                     | 1  | 2                                 |
| Bauchi       | 104               | 15                          | 1                           | 4  | 4  | -                     | 1                          | 1                     | -  | 1                                 |
| Bayelsa      | 34                | 8                           | -                           | -  | -  | -                     | -                          | -                     | -  | -                                 |
| Benue        | 70                | 17                          | 2                           | 7  | 3  | -                     | 3                          | 3                     | -  | 1                                 |
| Borno        | 208               | 16                          | -                           | 8  | 5  | -                     | -                          | -                     | -  | -                                 |
| Cross River  | 22                | 12                          | -                           | 3  | 3  | -                     | -                          | -                     | -  | -                                 |
| Delta        | 41                | 12                          | 3                           | 5  | 3  | -                     | 4                          | 4                     | -  | -                                 |
| Ebonyi       | 51                | 13                          | -                           | 1  | 1  | -                     | -                          | -                     | -  | -                                 |
| Edo          | 57                | 14                          | -                           | 1  | 1  | -                     | -                          | -                     | -  | -                                 |
| Ekiti        | 22                | 10                          | -                           | -  | -  | -                     | -                          | -                     | -  | -                                 |
| Enugu        | 145               | 17                          | 5                           | 18   | 6  | -                     | 15                         | 15                    | -  | 1                                 |
| FCT Abuja    | 13                | 5                           | -                           | -  | -  | -                     | -                          | -                     | -  | -                                 |
| Gombe        | 12                | 7                           | -                           | -  | -  | -                     | -                          | -                     | -  | -                                 |
| Imo          | 102               | 25                          | 1                           | 4  | 3  | -                     | 1                          | 1                     | -  | 2                                 |
| Jigawa       | 57                | 13                          | -                           | -  | -  | -                     | -                          | -                     | -  | -                                 |
| Kaduna       | 4                 | 4                           | -                           | -  | -  | -                     | -                          | -                     | -  | -                                 |
| Kano         | 22                | 13                          | -                           | 1  | 1  | -                     | -                          | -                     | -  | -                                 |
| Katsina      | 219               | 31                          | -                           | 2  | 2  | -                     | -                          | -                     | -  | 1                                 |
| Kebbi        | 38                | 16                          | -                           | 1  | 1  | -                     | -                          | -                     | -  | -                                 |
| Kogi         | 21                | 12                          | 1                           | 1  | 1  | -                     | 1                          | 1                     | -  | 1                                 |
| Kwara        | 34                | 13                          | -                           | 1  | 1  | -                     | -                          | -                     | -  | -                                 |
| Lagos        | 13                | 5                           | -                           | -  | -  | -                     | -                          | -                     | -  | -                                 |
| Nasarawa     | 39                | 9                           | 1                           | 1  | 1  | -                     | 1                          | 1                     | -  | -                                 |
| Niger        | 55                | 18                          | 1                           | 1  | 1  | -                     | 1                          | 1                     | -  | -                                 |
| Ogun         | 40                | 11                          | -                           | -  | -  | -                     | -                          | -                     | -  | -                                 |
| Ondo         | 60                | 15                          | 3                           | 5  | 3  | -                     | 3                          | 3                     | -  | -                                 |
| Osun         | 28                | 14                          | 1                           | 1  | 1  | -                     | 1                          | 1                     | 1  | 1                                 |
| Oyo          | 93                | 30                          | 5                           | 6  | 5  | -                     | 6                          | 6                     | -  | -                                 |
| Plateau      | 71                | 16                          | -                           | 1  | 1  | -                     | -                          | -                     | -  | -                                 |
| Rivers       | 36                | 20                          | -                           | 1  | 1  | -                     | -                          | -                     | -  | -                                 |
| Sokoto       | 13                | 8                           | -                           | -  | -  | -                     | -                          | -                     | -  | -                                 |
| Taraba       | 43                | 10                          | 2                           | 3  | 2  | -                     | 3                          | 3                     | 1  | 1                                 |
| Yobe         | 116               | 14                          | -                           | 1  | 1  | -                     | -                          | -                     | -  | -                                 |
| Zamfara      | 18                | 11                          | -                           | -  | -  | -                     | -                          | -                     | -  | -                                 |
| <b>TOTAL</b> | <b>2,202</b>      | <b>512 (66%)</b>            | <b>32 (4.1%)</b>            | <b>92 (4.2%)</b>                             | <b>62 (8.0%)</b>                               | <b>0</b>              | <b>47 (2.1%)</b>           | <b>47 (2.1%)</b>      | <b>3 (6.4%)</b>                          | <b>12 (0.5%)</b>                  |





**Figure 1: Map of Nigeria showing yellow fever outbreak attack rates in affected LGAs from January 2021 – January 2022**



**Figure 2: Epicurve of yellow fever cases in Nigeria from January 2021 – January 2022**

### Trend of confirmed yellow fever cases in Nigeria July 2017 - 2021

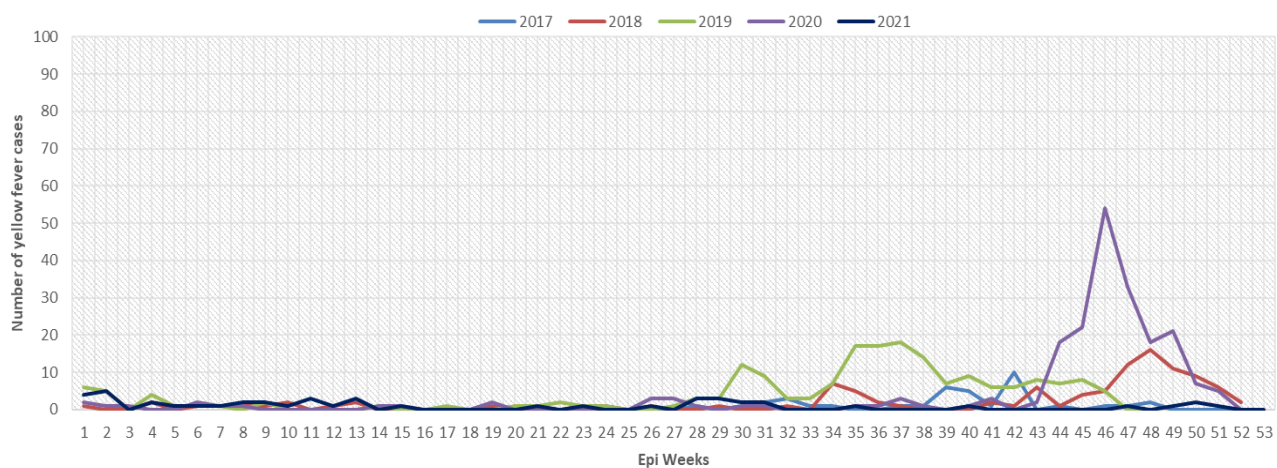


Figure 3: Trend of confirmed yellow fever cases in Nigeria 2017 – 2021

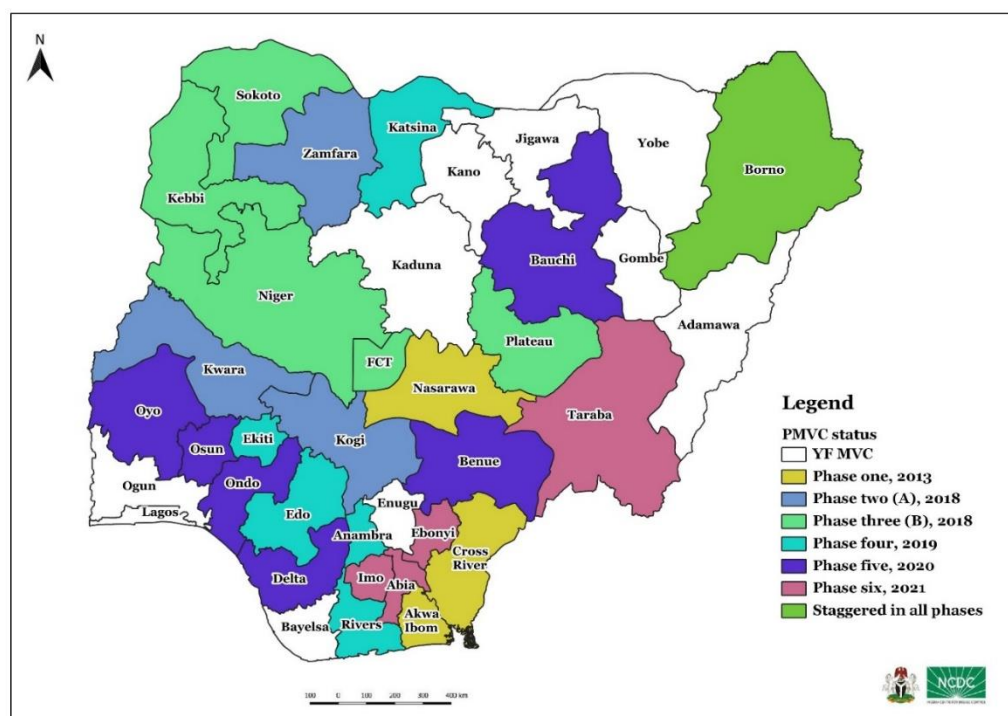


Figure 4: Map of Nigeria showing states and year of implementation Yellow fever mass vaccination campaigns from 2013-2021

## Enugu State

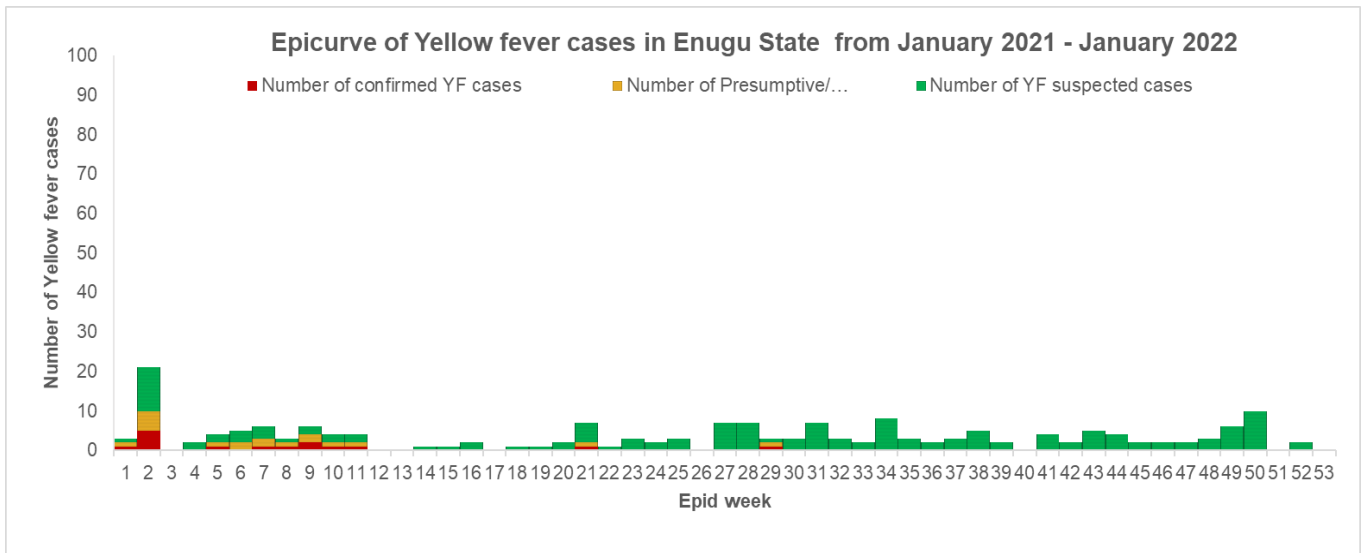


Figure 5a: Epicurve of yellow fever cases in Enugu State from January 2021 – January 2022

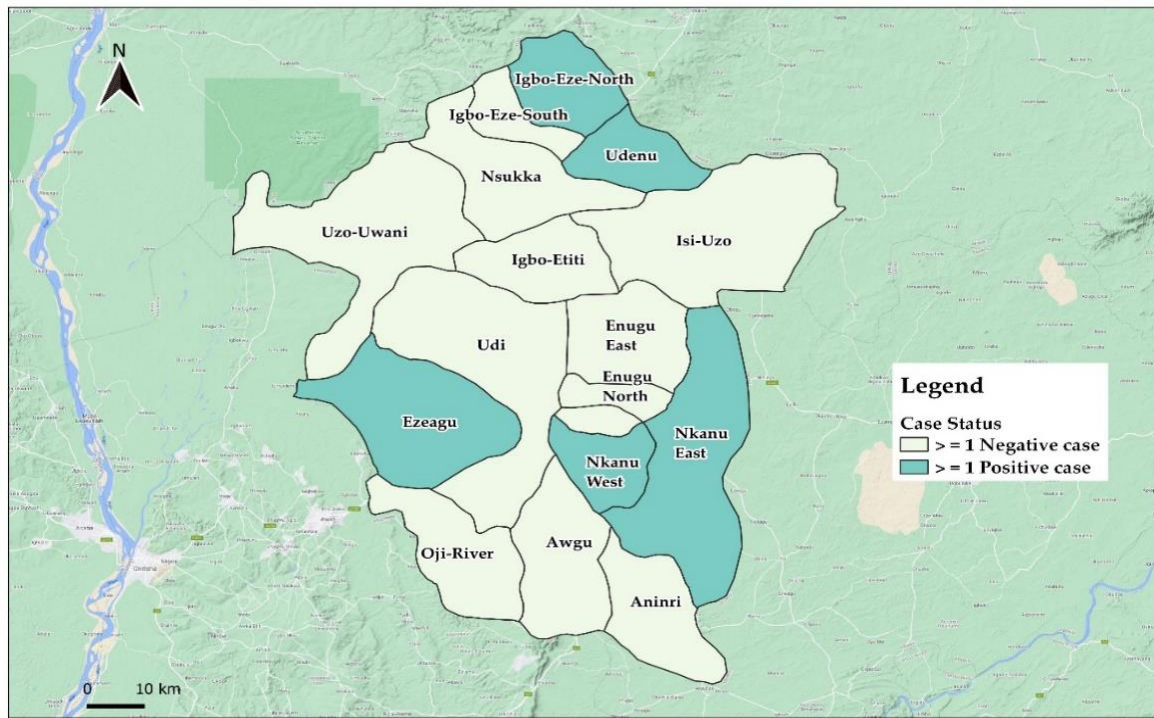


Figure 5b: Map of yellow fever cases in Enugu State from January 2021 – January 2022



# Partners

