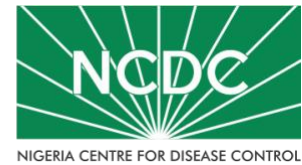


COVID-19 SITUATION REPORT

SITUATION REPORT 208

Wednesday, 23rd September 2020



NIGERIA CENTRE FOR DISEASE CONTROL

DATA AS REPORTED AND ACCURATE BY NCDC AS AT MIDNIGHT 23RD SEPTEMBER 2020

HIGHLIGHTS

- One hundred and eleven (**111**) confirmed cases were reported in the last 24 hours from **12** states – Lagos (31), Gombe (18), Kaduna (18), FCT (15), Rivers (14), Imo (3), Kwara (3), Oyo (3), Bayelsa (2), Ogun (2), Edo (1) and Osun (1).
- One hundred and forty-nine (**149**) discharges have been reported in the last 24 hours in **seven** states – Edo (56), Gombe (32), Ondo (30), Rivers (15), Kaduna (7), FCT (5) and Akwa Ibom (4).
- **Two** deaths were reported in the last 24 hours in **two** states – Bayelsa (1) and FCT (1).
- All **36** states in Nigeria, and the FCT, have reported a confirmed case.

SITUATION UPDATES

Total (New in the last 24 hours)

SAMPLES TESTED

494,577 (6,791)

CONFIRMED CASES

57,724 (111)

AFFECTED STATES INCLUDING FCT

37

DISCHARGED CASES

48,985 (149)

CONFIRMED FATALITIES

1,102 (2) – 1.9% CFR

DEMOGRAPHICS

MALE – 36,715 (**64%**)

FEMALE – 21,009 (**36%**)

MOST AFFECTED AGE GROUP

31 - 40 (**26%**)

PERSONS OF INTEREST

11,777 (Total)

11,710 (99.4% - Exceeded Follow Up)

PROVENANCE

TRAVEL HISTORY – **850 (1%)**

CONTACTS – **15,419 (27%)**

UNKNOWN EXPOSURE – **41,455 (72%)**

GLOBAL UPDATES

TOTAL NUMBER OF CASES

31,425,029 (967,164 deaths)

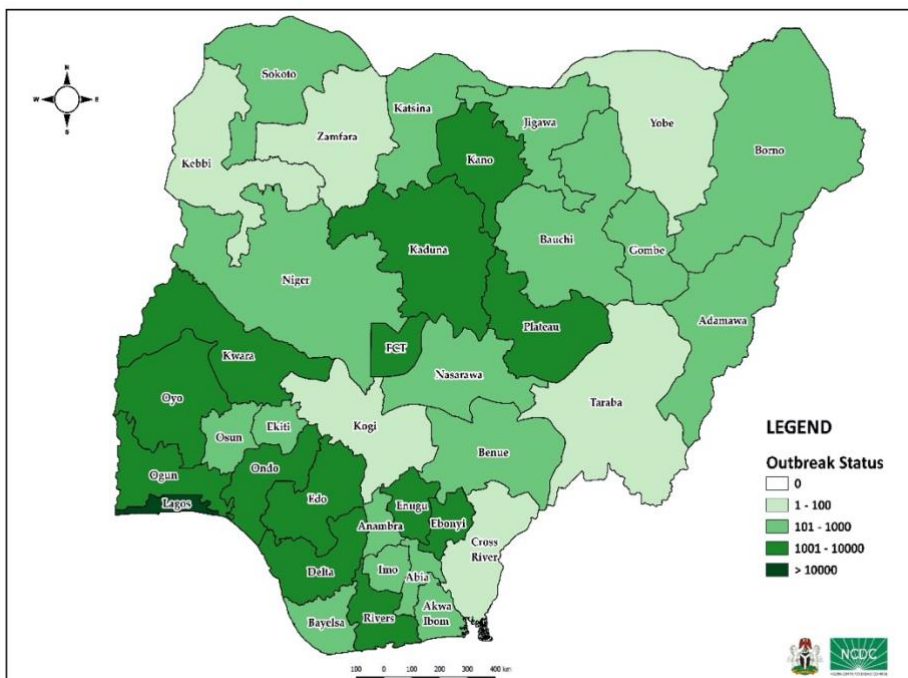
COUNTRIES & TERRITORIES AFFECTED

216*

*Excluding the 2 International Conveyance

STATE OF THE NATION

Figure 1: Map of Nigeria showing 36 states and FCT affected by COVID-19



GENERAL FACT SHEET – DATA AS AT 23RD SEPTEMBER 2020

Table 1: States with reported laboratory-confirmed COVID-19 cases, recoveries, deaths and days since last reported case

STATES	CONFIRMED CASES		DISCHARGED CASES		DEATHS		TOTAL ACTIVE CASES	DAYS SINCE LAST REPORTED CASE
	TOTAL	NEW	TOTAL	NEW	TOTAL	NEW		
Lagos	19,086	31	15,246	0	204	0	3,636	0
FCT	5,598	15	4,932	5	78	1	588	0
Plateau	3,304	0	2,448	0	31	0	825	1
Oyo	3,236	3	2,259	0	39	0	938	0
Edo	2,616	1	2,486	56	107	0	23	0
Kaduna	2,377	18	2,255	7	34	0	88	0
Rivers	2,277	14	2,172	15	59	0	46	0
Delta	1,800	0	1,650	0	49	0	101	1
Ogun	1,774	2	1,721	0	28	0	25	0
Kano	1,734	0	1,656	0	54	0	24	5
Ondo	1,606	0	1,545	30	35	0	26	1
Enugu	1,285	0	1,166	0	21	0	98	2
Ebonyi	1,038	0	1,007	0	30	0	1	4
Kwara	1,028	3	925	0	25	0	78	0
Abia	881	0	847	0	8	0	26	5
Gombe	857	18	742	32	25	0	90	0
Katsina	848	0	457	0	24	0	367	4
Osun	818	1	783	0	17	0	18	0
Borno	741	0	703	0	36	0	2	23
Bauchi	692	0	664	0	14	0	14	1
Imo	565	3	217	0	12	0	336	0
Benue	473	0	413	0	10	0	50	5
Nasarawa	449	0	325	0	13	0	111	1
Bayelsa	397	2	370	0	22	1	5	0
Jigawa	322	0	308	0	11	0	3	69
Ekiti	317	0	294	0	6	0	17	3
Akwa Ibom	288	0	272	4	8	0	8	6
Niger	259	0	232	0	12	0	15	1
Adamawa	234	0	198	0	16	0	20	3
Anambra	232	0	184	0	19	0	29	8
Sokoto	161	0	142	0	17	0	2	6
Taraba	95	0	73	0	6	0	16	12
Kebbi	93	0	84	0	8	0	1	26
Cross River	85	0	74	0	9	0	2	6
Zamfara	78	0	73	0	5	0	0	34
Yobe	75	0	59	0	8	0	8	4
Kogi	5	0	3	0	2	0	0	82
Total	57,724	111	48,985	149	1,102	2	7,637	

States, including FCT, are arranged in descending order by number of total confirmed cases and then alphabetical order

SELECTED CHARTS

Figure 2: Daily Epidemic Curve of Confirmed Cases (WK9 – WK39)

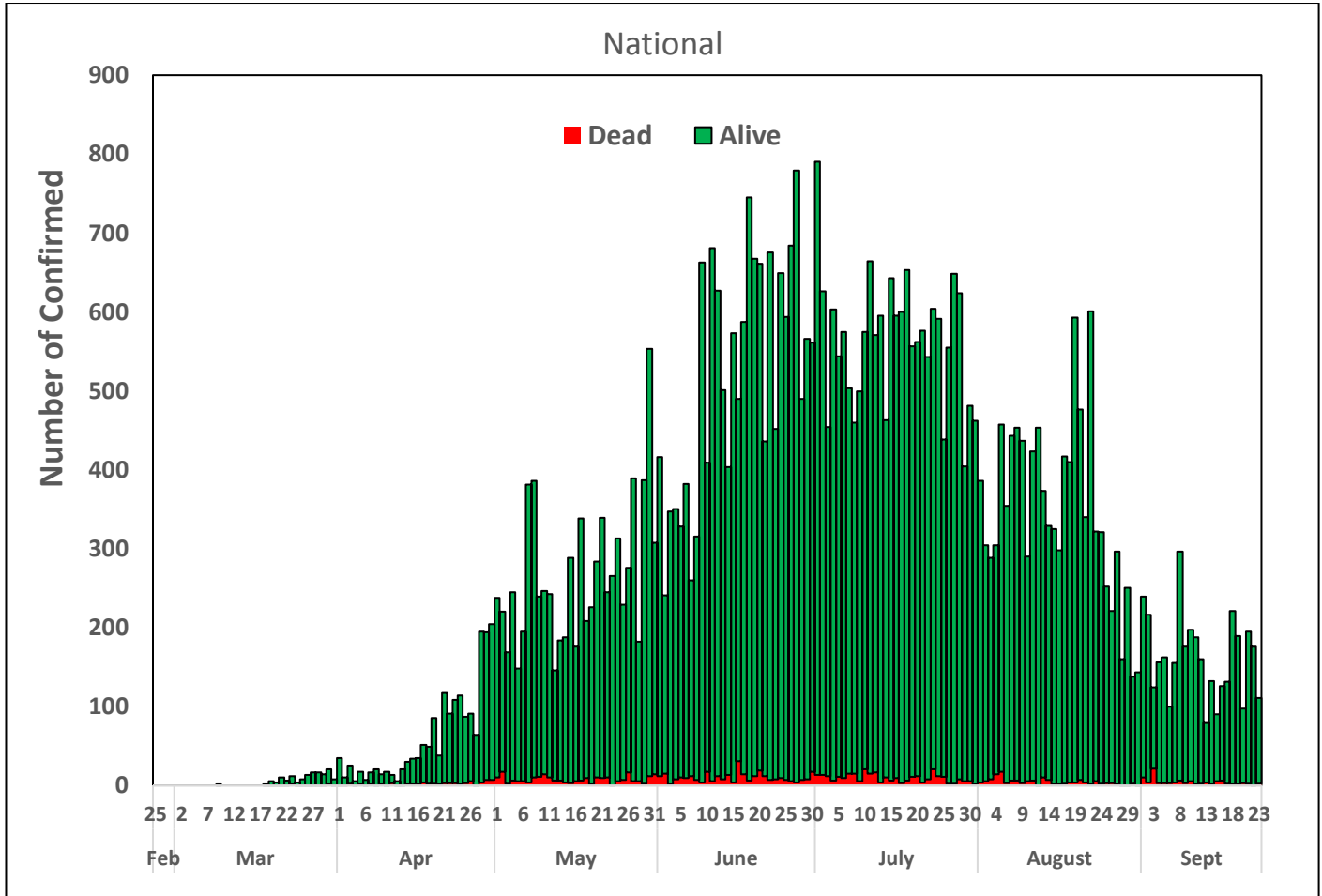
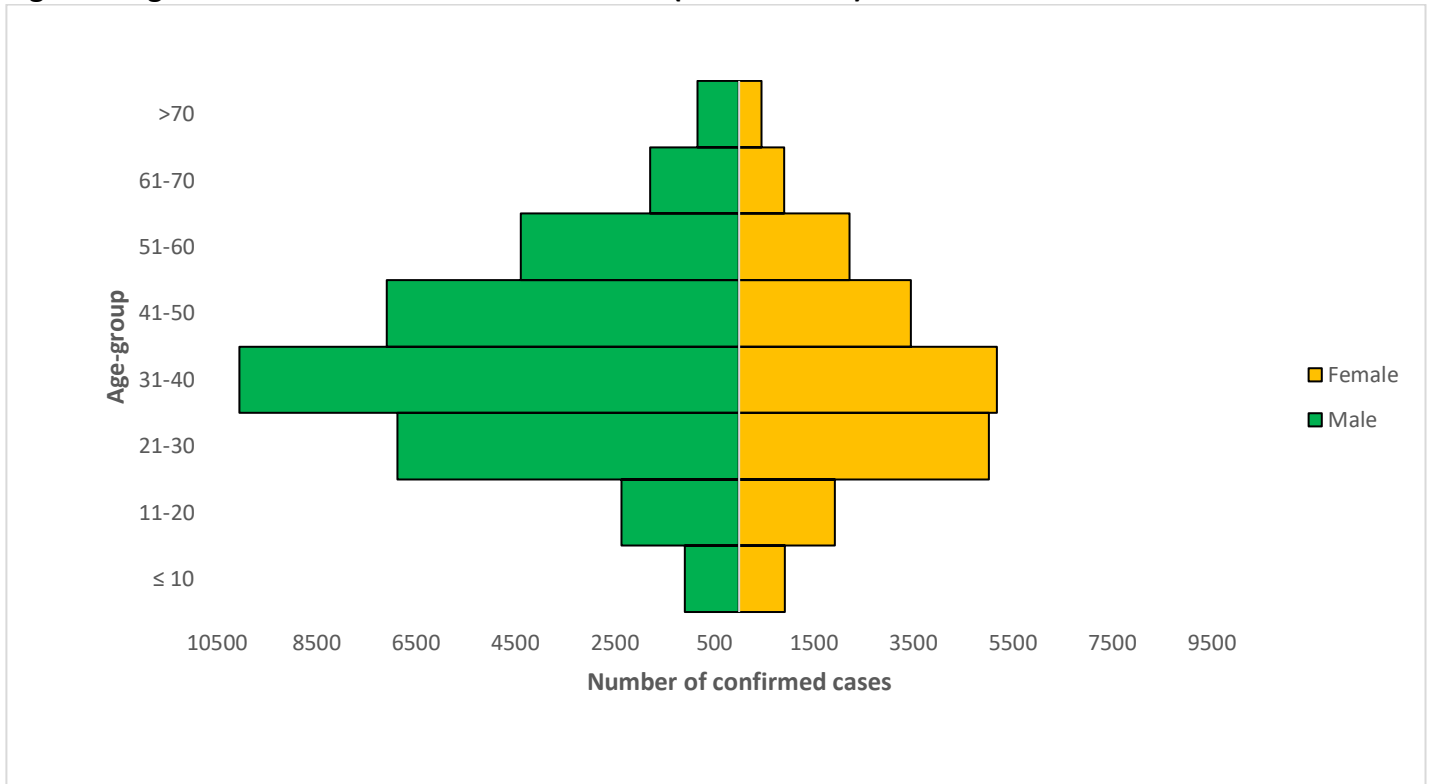


Figure 3: Age-Sex Distribution of Confirmed Cases (WK9 – WK39)



PREPAREDNESS

Since the confirmation of the first case on 27th February 2020, the NCDC has released advisories and statements to help Nigerians and affected groups in particular to respond to the pandemic

- NCDC published second interim guidance – Infection Prevention and Control: [Recommendations during health care provision for suspected and confirmed cases of COVID-19](#)
- NCDC recently published the first edition of a quick reference guide on setting up sample collection centre - [A step by step guide on setting up a sample collection centre](#)
- NCDC has launched an online course on [Infection, Prevention and Control \(IPC\) for COVID-19](#) NCDC eLearning platform
- Ahead of forthcoming elections in the country, NCDC has issued [Guidelines for Conducting Elections During the COVID-19 Outbreak in Nigeria](#).
- To protect our elders, and those with pre-existing medical conditions, NCDC has issued an [Advisory for Vulnerable Groups](#).
- NCDC has released [guidelines on the re-opening of places for worship](#).
- NCDC has released [Strategies to Improve Surveillance for COVID-19 Guidance for States](#)
- The Nigeria Police Force has released COVID-19 operational guidelines for the [Police and other Law Enforcement Agencies](#) in Nigeria
- Guidelines have been issued for the [safe transportation of remains of persons suspected or confirmed to have died of COVID-19](#)
- Information on diagnostics of the COVID-19 virus can be found in our [detailed FAQ document](#).
- To increase our testing capacity, NCDC has issued guidelines for the [integration of private labs](#).
- Guidelines for [businesses and employers](#) have been updated.
- NCDC has updated its [case definition](#) , [community case definition](#) and [case management guide](#).
- NCDC releases periodic [public health advisories](#) to Nigerians on the COVID-19 disease.
- To adhere to post-lockdown measures, NCDC has released an [advisory on the use of face masks](#), as well as information on the [Use of Cloth face masks](#) and [how to make your cloth face masks](#).
- NCDC has released guidelines for the [management of pregnant women and nursing mothers](#) during the pandemic.
- To address burials of loved ones who die from COVID-19, guidelines have been issued to advise on the [management of dead bodies](#).
- For health centres managing cases, the following documents have been released- a guideline for the [Rational Use of Personal Protective Equipment in the care of COVID-19 cases](#).
- As part of plans to increase the testing capacity of the country, the NCDC published a [National Strategy to Scale Up Access to Coronavirus Disease Testing in Nigeria](#) document.
- The Presidential Task Force has published policies and announcements on COVID-19 [available on the website of the Presidency](#) – including presidential addresses, task force updates and information on livelihood and economic support.

RESPONSE

On 28th February 2020, a multi-sectoral Emergency Operations Centre (EOC) was activated at Level 3 – the highest emergency level in Nigeria –led by NCDC in close coordination with the State Public Health EOCs (PHEOC).

- **Developed new dashboard for COVID-19 on the Surveillance Outbreak Response Management and Analysis System (SORMAS) tool to help guide state response**
- **Conducted assessment of front line health workers on Infection Prevention and Control (IPC) measures use in Adamawa State**
- **Concluded a 3-day dialogue with stakeholders in the educational sector in all the geopolitical zones on an integrated approach to safe school re-opening**
- **Trained 60 laboratory scientists drawn from all Local Government Areas on sample collection in Imo State**

- Trained nurses on IPC from General Hospitals in Yenogoa, Bayelsa State
- All education materials can be found via www.covid19.ncdc.gov.ng